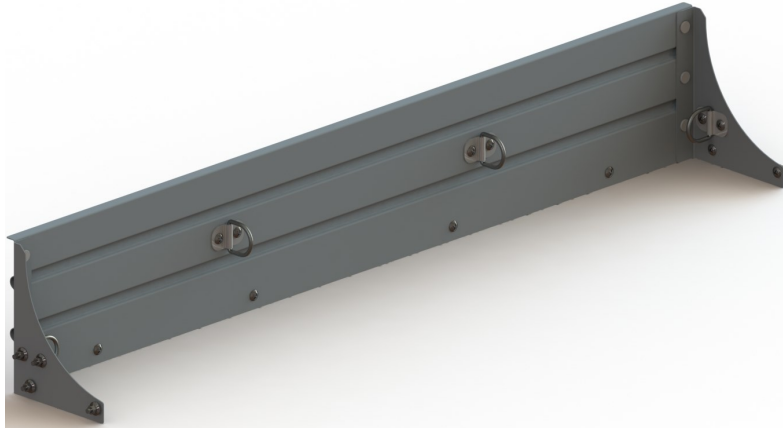


EBL BACK PANEL KIT, 48X08



PRODUCT WEIGHT
7.5 LBS

WIDTH x DEPTH x HEIGHT
38" x 14" x 46"

CAPACITY
25 lbs per D-Ring

COLOR

GRAY

CATALOG NUMBER

EBLBPK4808



PRODUCT FEATURES

This back panel kit is made to be mounted to the EBL1072. It creates a tall back surface to prevent items from falling off of the Extendedobed when the vehicle experiences rough terrain. The back panel hit is fastened to the perimeter frame of the EBL and contains four D-rings for cargo tie-downs.

SEE PAGE 2 FOR APPLICATION NOTES AND ACCESSORIES, OTHER PRODUCTS THAT WORK WITH THIS UNIT.

PAGE 1 of 2

The information contained in this document is the sole property of ADRIAN STEEL COMPANY. ADRIAN STEEL COMPANY retains the right to modify and/or change the product of its design at any time without prior notification.



CATALOG NUMBER EBLBPK4808

PRODUCT APPLICATION

This product is designed to be installed on the EBL1072 to create a tall rear surface to prevent items from falling off.

ACCESSORIES THAT WILL WORK WITH THIS PRODUCT

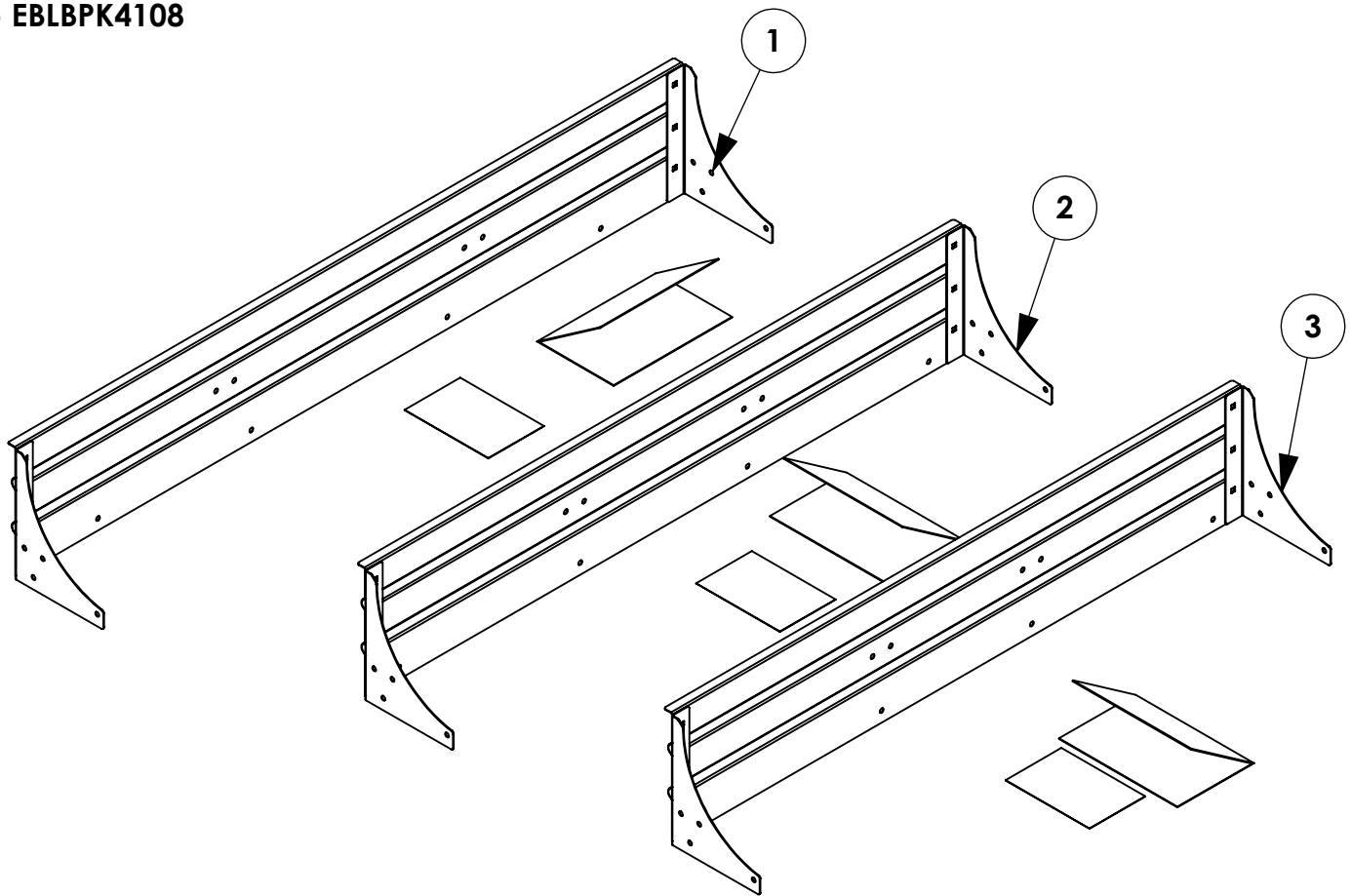
<i>CATALOG NUMBER</i>	<i>DESCRIPTION</i>
------------------------------	---------------------------

EBL1072	EXTENDOED 1200LB 48WX72L
----------------	---------------------------------

SPECIAL APPLICATION NOTES

INSTR. NUMBER : 72672	PG: 1	REV: B	ITEM NO.	PART NUMBER	DESCRIPTION	QTY.
PART NUMBER : EBLBPKxxxx			1	EBLBPK4808	EBL BACK PANEL KIT, 48X08	1
PART • EXTENDO BED BACK DESC. • PANEL KITS			2	EBLBPK4308	EBL BACK PANEL KIT, 43X08	1
NOTE: THIS INSTRUCTION IS VALID FOR THE FOLLOWING KITS:			3	EBLBPK4108	EBL BACK PANEL KIT, 41X08	1

- EBLBPK4808
- EBLBPK4308
- EBLBPK4108



TOOLS NEEDED:

- 7/16" SOCKET
- 7/16" WRENCH
- #2 PHILLIPS
- 9/32" (0.281") Drill Bit
- Drill
- Ratchet/Impact

GET TO KNOW THE VEHICLE - AT THE BEGINNING OF ANY INSTALLATION, CHECK THE LOCATION OF THE FUEL TANK, FUEL LINES, BRAKE LINES, HIGH VOLTAGE BATTERIES AND WIRING HARNESSSES TO AVOID INJURY OR PROPERTY DAMAGE FROM TOOL CONTACT.

SEAL ALL EXTERIOR HOLES - ALL INSTALLATION HOLES SHOULD BE SEALED WITH BUTYL TAPE OR SILICON TO PREVENT WATER AND EXHAUST GASES FROM ENTERING THE VEHICLE.

CONTROL DRILL DEPTH - TO AVOID DAMAGE TO THE VEHICLE, USE A DRILL STOP OR CLEARED STEP BIT WHEN DRILLING INSTALLATION HOLES.

ALWAYS ADD PRIMER - WHEN ADDING INSTALLATION HOLES BE SURE TO USE A SELF-ETCHING PRIMER TO PREVENT CORROSION, FASTENER FAILURE AND INJURY.

MOUNTING POINTS MUST HAVE METAL-TO-METAL CONTACT - USE PROVIDED MOUNTING SPACERS TO ACCOMMODATE FOR VEHICLE FEATURES, CARPET OR SUBFLOORS.

PROVIDE CLEARANCE FOR SPACERS - IF THE INSTALLATION VEHICLE CONTAINS A CARPET OR SUBFLOOR, USE A 1-3/16" DIAMETER CARPET CUTTER (P/N: 31183-0) AT ALL MOUNTING LOCATIONS TO OPEN UP ROOM FOR SPACERS.

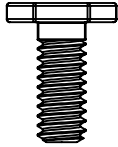
CHECK SPACER ORIENTATION - BE SURE THAT THE INDENT IN THE SPACER COVERS THE PLUSNUT HEAD; THIS ENSURES THE MOST METAL-TO-METAL CONTACT AND REDUCES VIBRATION.

PLUSNUT INSTALLATION - A PLUSNUT GUN IS RECOMMENDED FOR PLUSNUT INSTALLATION FOR ITS PRODUCTION SPEED. HOWEVER, A PLUSNUT SETTING TOOL CAN ALSO BE USED (P/N: 22200-0).

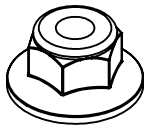
THRU-BOLT CLEARANCE - WHEN USING A THRU-BOLT AT ANY MOUNTING LOCATION, BE SURE THAT YOUR HOLE HAS 1/16" CLEARANCE.

FASTENERS USED

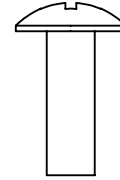
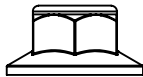
BAG REFERENCE: BAGBAGEBLBPK4808



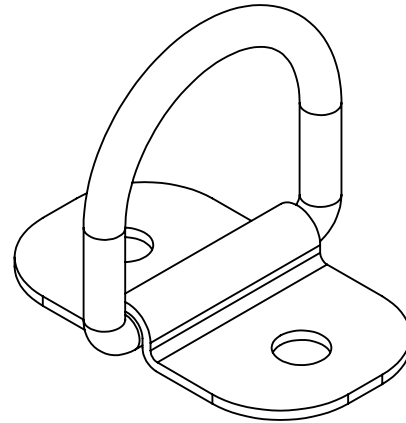
FAS0924
BOLT,CRG 1/4-20X.62 FH ZP
QTY: 6



FAS0055
NUT,HEX NLK FLG 1/4-20 ZP
QTY: 22



FAS0062
SCREW,THP 1/4-20X.75 G5ZP
QTY: 16



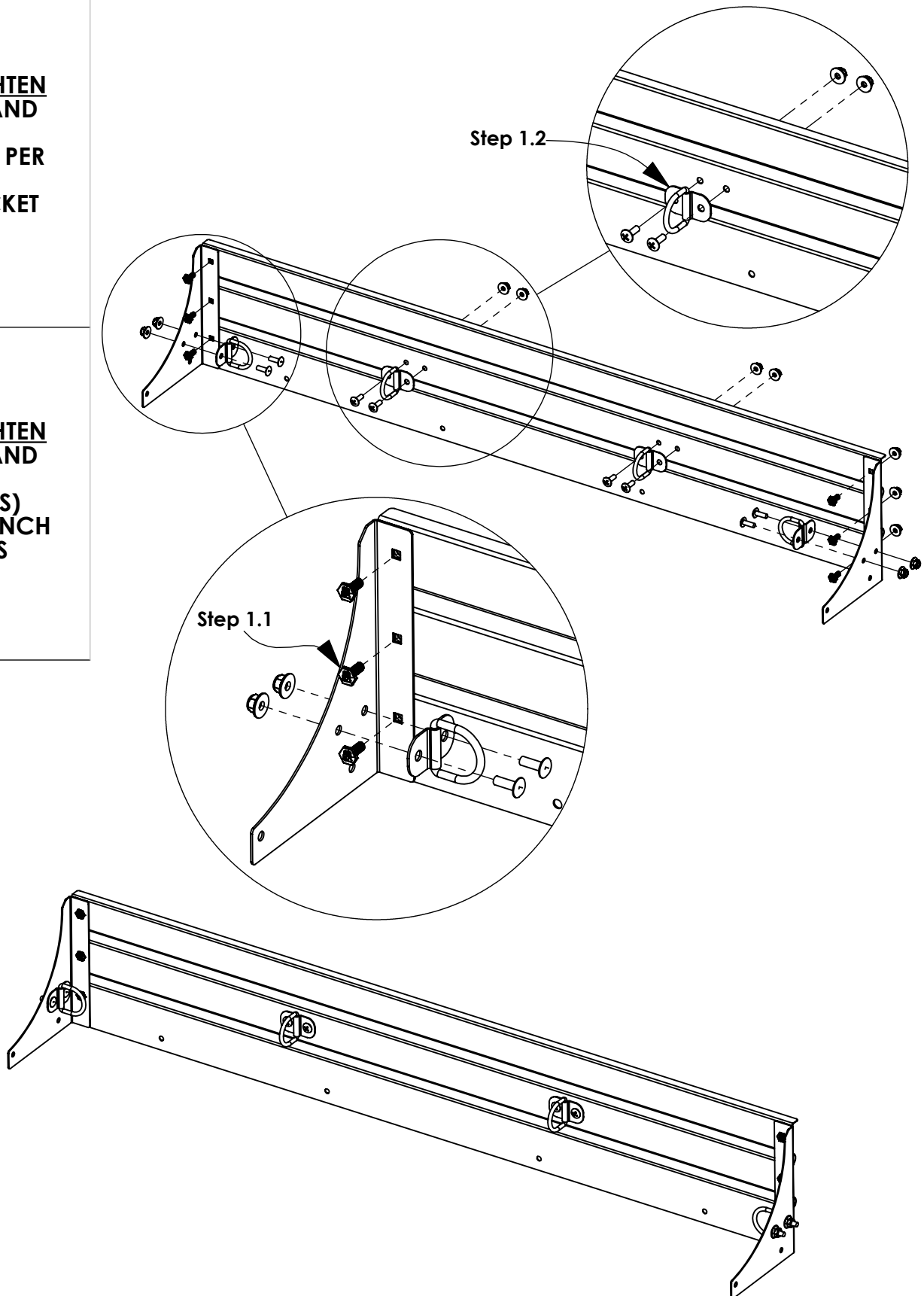
24760-0
CGO, TIEDOWN, D-RING
QTY: 4

INTENTIONALLY LEFT BLANK

STEP 1 - ASSEMBLE THE PANELS AND MOUNT D-RINGS

Step 1.1
FULLY TIGHTEN
FAS0924 AND
FAS0055
(3 PLACES PER
SIDE)
7/16" SOCKET

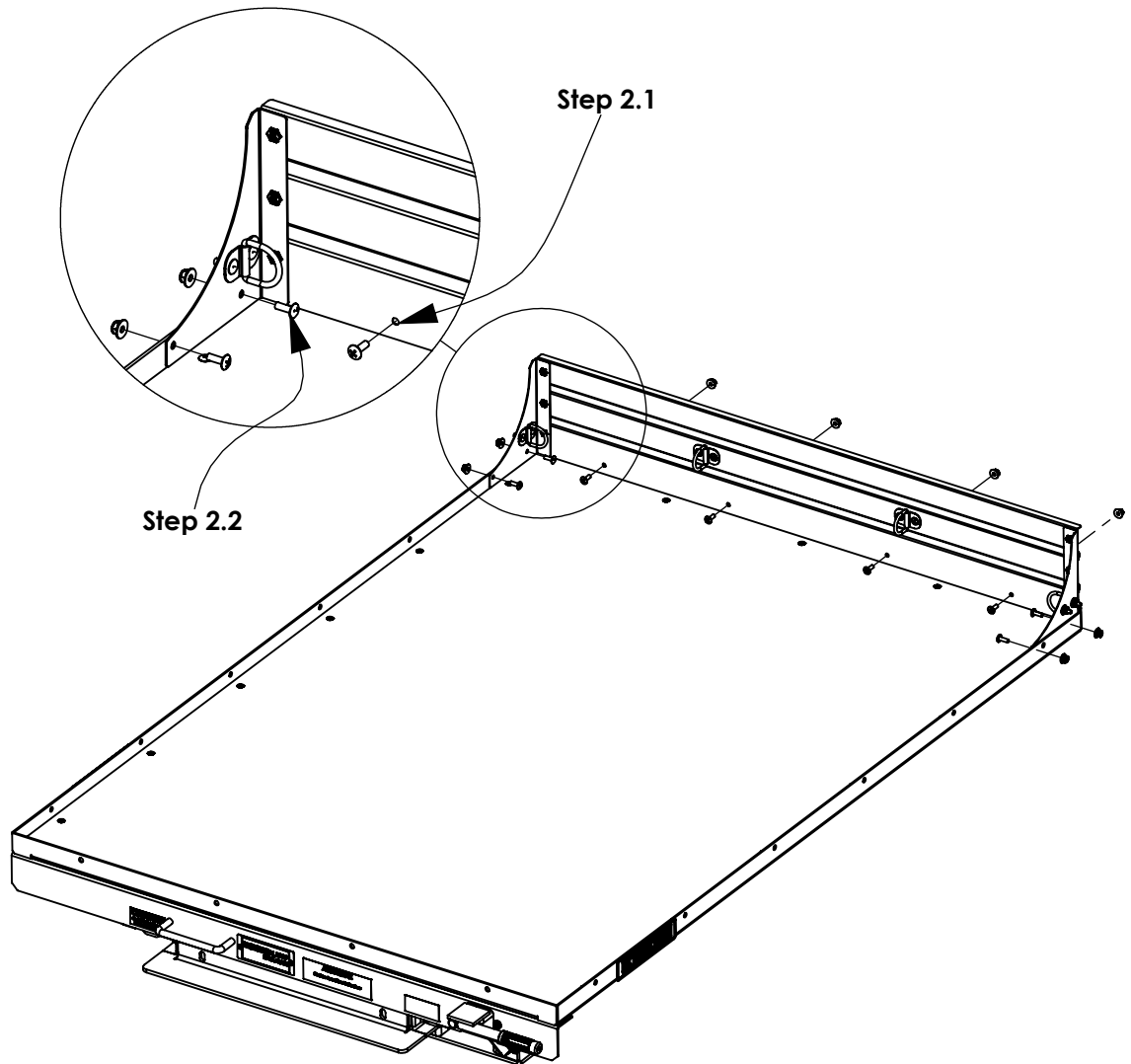
Step 1.2
FULLY TIGHTEN
FAS0062 AND
FAS0055
(08 PLACES)
7/16" WRENCH
#2 PHILLIPS



STEP 2 - MOUNT THE BACK PANEL ASSEMBLY TO THE EXTENDED FRAME.

Step 2.1
MARK AND
DRILL 0.281"
HOLES IN THE
EXTENDED
FRAM.
(8) PLACES

Step 2.2
FULLY TIGHTEN
FAS0062 AND
FAS0055
(8 PLACES)
7/16" WRENCH
#2 PHILLIP



ASSEMBLY COMPLETE

