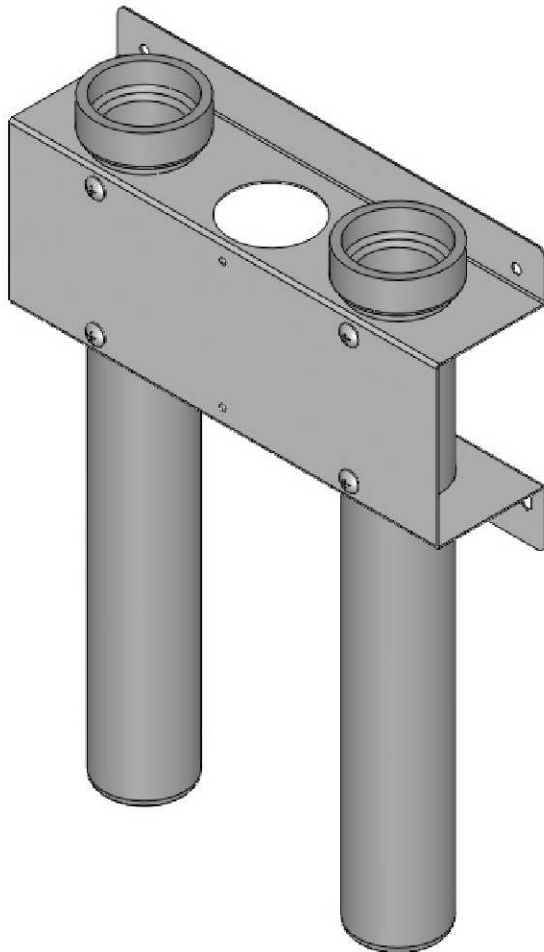




ADRIAN STEEL®

Cargo Management Solutions for Commercial Vehicles

DRILL BIT HOLDER 18"H X 13"W



PRODUCT WEIGHT

4.29 LBS

WIDTH x DEPTH x HEIGHT

13" x 3-3/8" x 18"

CAPACITY

50 lbs

COLOR

GRAY

CATALOG NUMBER

DBH218

PRODUCT FEATURES

Drill bit holder designed with mounting hole pattern to match Street Side rear door of 2014 Transit Connect. Product can be installed in many other applications however, drilling will be required.

PAGE 1 of 1

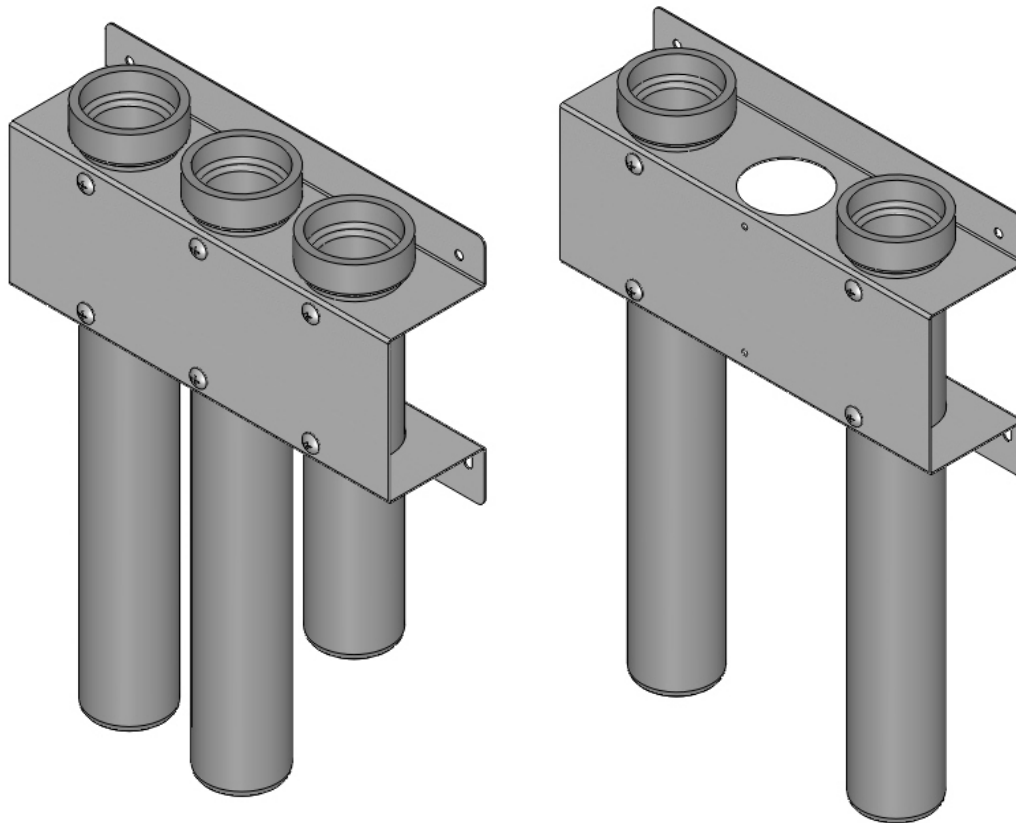
The information contained in this document is the sole property of ADRIAN STEEL COMPANY. ADRIAN STEEL COMPANY retains the right to modify and/or change the product of its design at any time without prior notification.

Introduction / Comments:

Drill Bit / Sign Holder is designed specifically to be mounted to the streetside rear cargo door of the 2014 Transit Connect cargo van but can be used in many other applications.

Note:

It is advised that all fasteners used in this assembly and installation should be checked for tightness at the following intervals: @ 2-weeks and again @ 6-weeks of operation. This preventive maintenance step must be completed to ensure your Product gives you long service life.



DBH112218 & DBH218 DRILL BIT HOLDER

- PRECAUTIONS -



CAUTION



**THE USE OF AIR IMPACT TOOLS CAN
OVER-TORQUE FASTENERS AND
CAUSE FASTENER FAILURE!**



CAUTION



**ALL INSTALLATION HOLES SHOULD BE SEALED
WITH SILICON OR BUTYL SEALANT TO PREVENT
EXHAUST FUMES FROM ENTERING THE VEHICLE!**



DANGER



**INSPECT FOR FUEL TANK, FUEL LINES, BRAKE LINES, HIGH
VOLTAGE BATTERIES AND ELECTRICAL LINES PRIOR TO
DRILLING TO AVOID DAMAGING CRITICAL VEHICLE SYSTEMS
OR INJURY TO INSTALLER DURING INSTALLATION PROCESS!**



CAUTION



**TO AVOID DAMAGING THE VEHICLE ALWAYS USE DRILL
STOPS WHEN DRILLING ANY INSTALLATION HOLES!
ADRIAN AVAILABLE PART #'S 31121-0 (1/2" DEEP),
31122-0 (3/4" DEEP)**



- IMPORTANT WARRANTY REQUIREMENTS -

1. SUBSTITUTING ADRIAN STEEL SPECIFIED FASTENERS FOR ASSEMBLY AND/OR INSTALLATION WILL VOID YOUR PRODUCT WARRANTY.
2. ALL HOLES DRILLED INTO VEHICLE SHOULD HAVE THE RAW METAL EDGES SEALED WITH A SELF-ETCHING PRIMER TO RESIST CORROSION AND POTENTIAL FASTENER POINT FAILURE.
3. ALL FASTENERS USED IN THE INSTALLATION OF THIS PRODUCT SHOULD BE TIGHTENED TO THE TORQUE(S) SPECIFIED IN THESE INSTRUCTIONS.
4. THESE INSTRUCTIONS SHOULD BE KEPT WITH THE VEHICLE.

THE BASIC TOOLS NEEDED FOR MOST INSTALLATIONS



DRILL



DRILL BIT WITH
STOP



RATCHET, SOCKETS
AND/OR WRENCHES



SCREWDRIVERS



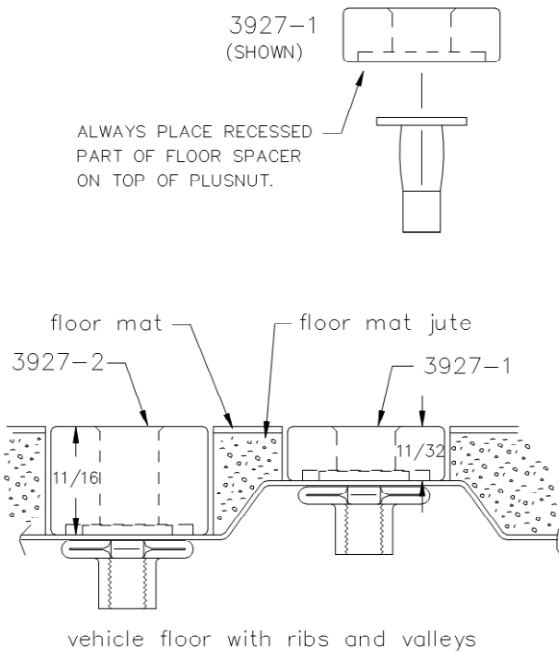
MEASURING TAPE

ADDITIONAL TOOLS MAY BE NEEDED FOR THIS INSTALLATION AND THEY WILL BE IDENTIFIED IN THE STEPS THAT FOLLOW.

If your vehicle contains carpet or a rubber floor mat you will need to prepare the mounting location. Position the product to be installed into the vehicle and once you are satisfied with the mounting locations, mark the mounting locations. Using a 1-3/16" diameter carpet cutter (P/N: 31183-0). Select the appropriate floor spacers as shown in the illustration. Set those aside for use later into the installation process. Using the correct drill bit size for the selected plusnut, drill the mounting holes in the vehicle sheet metal to prepare for installing the plusnuts.

If you are thru-bolting at any of the locations simply drill a hole that is 1/16" larger than the bolt size(s) for those locations.

Once you have drilled the holes into the vehicle, the raw metal edges should be sealed using a self-etching primer to resist corrosion and potential fastener point failure.



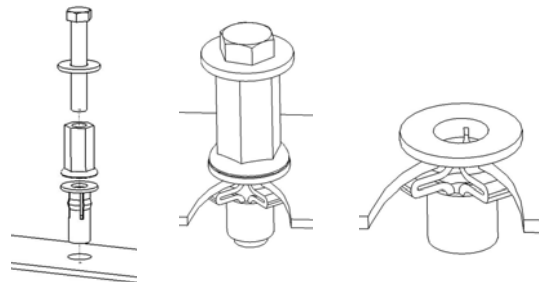
A PLUSNUT (RIVNUT) SETTING TOOL IS REQUIRED FOR PLUSNUT (RIVNUT) INSTALLATION AND IS SUPPLIED WITH THIS KIT. OR USE AN AIR POWERED PLUSNUT SETTING GUN.

1/4-20UNC Plusnut (FAS0052) Use 3/8" dia. drill w/stop

FAS0080 SCREW, HXHD, 1/4-20UNCx2.00", G8
FAS0067 WASHER, FLAT, 1/4"ID
22200-0 PLUSNUT TOOL

5/16-18UNC Plusnut (FAS0091) Use 1/2" dia. drill w/stop

FAS0095 SCREW, HXHD, 5/16-18UNCx2.00", G8
FAS0086 WASHER, FLAT, 5/16"ID
22200-0 PLUSNUT TOOL

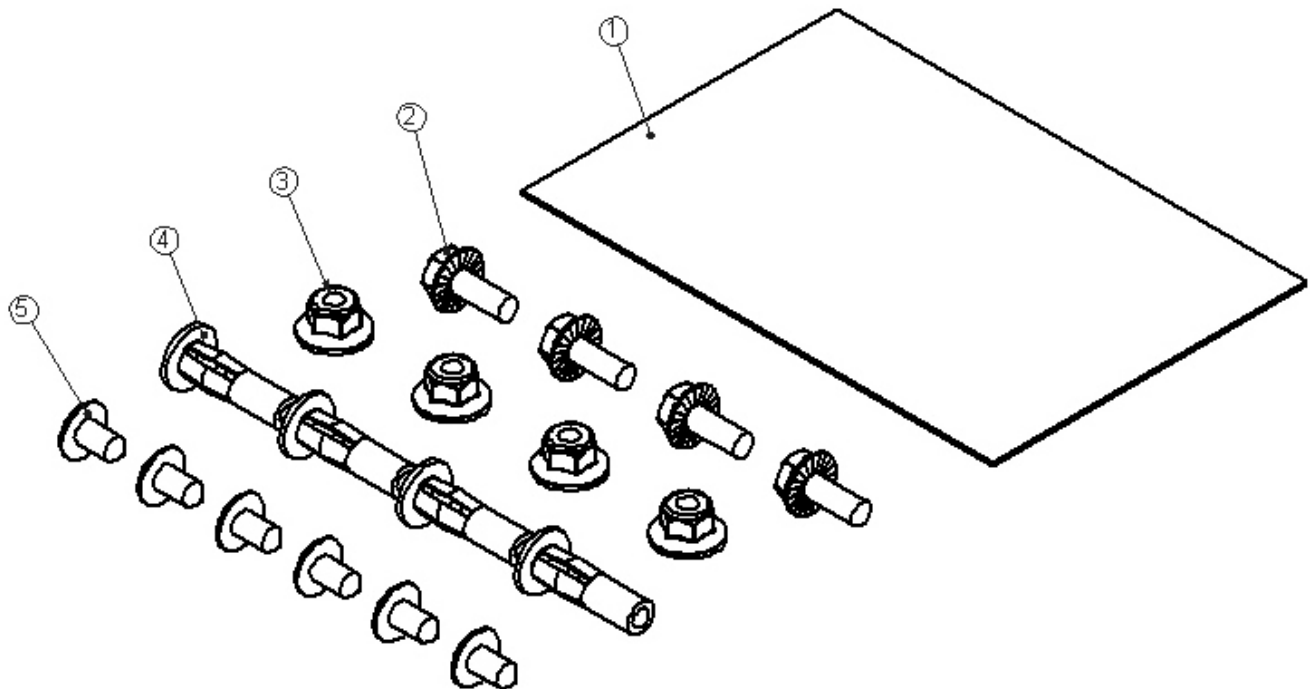


Place barrel of the plusnut body in sheet metal thru hole until flange is flush with sheet metal.

Using a 9/16" combination wrench of plusnut tool body and a second hand wrench, ratchet, or air tool, rotate the hex bolt head CW to draw plus nut flanges up (set the plusnut).

Installation and/or Assembly Fasteners
(BAGDBH3)

ITEM NO.	PART NUMBER	DESCRIPTION	BAGDBH3/QTY.
1	BAG0406-A	4" x 6" 3MIL AUTOBAG	1
2	FAS0018	SCREW,HH SFLNG 1/4-20X.62 ZP	4
3	FAS0055	Nut, Hex Flange,Nylock 1/4-20	4
4	FAS 0628 un- clinched	Plusnut, 1/4-20, .250-.500 GRIP	4
5	FAS0044	Screw, Truss Hd Phillips Tapping, #14- 10x0.50 (AB)	6



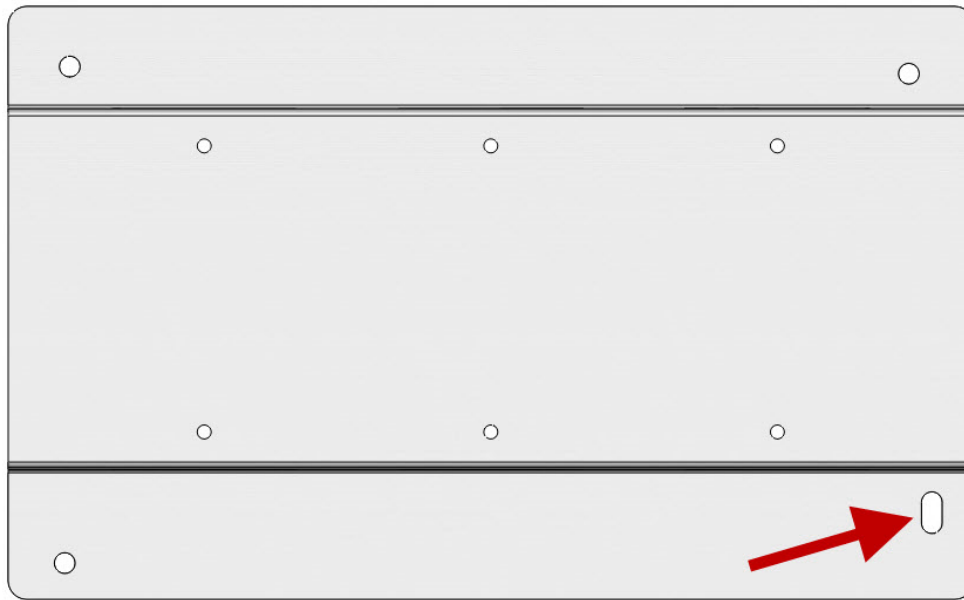
Step 01 Remove four (4) OEM plastic rivets and door panel from SS rear door of 2014 Transit Connect using a flat head screwdriver. **NOTE: If not mounting to the rear door, skip to Step 04!**



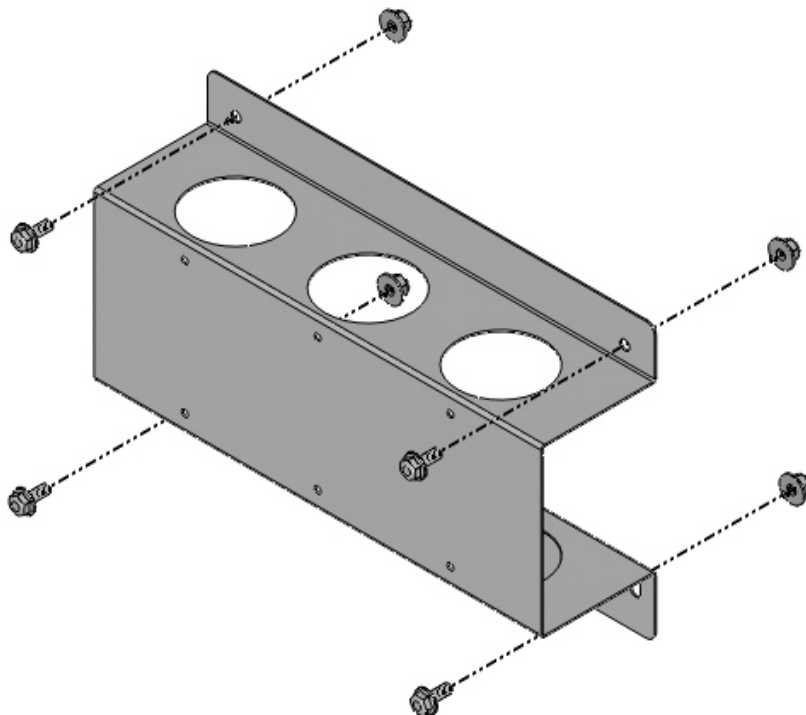
Step 02 Drill out all four (4) holes that previously housed plastic rivets. Drill using 3/8" drill bit WITH STOP, 1/2" deep (Adrian Steel part number 31119-0) in all four (4) locations. Use caution around any wire harnesses and/or linkage.



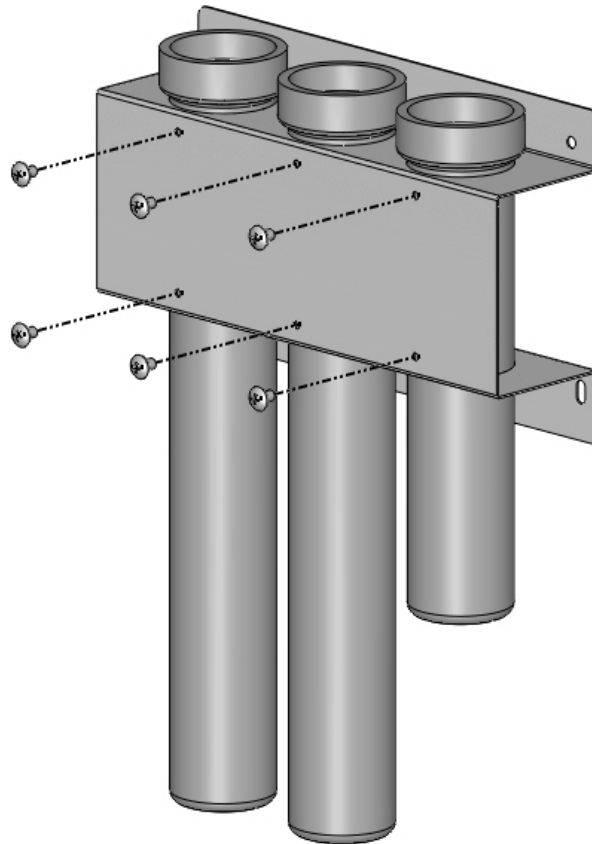
Step 03 Holding the hardboard panel in place, align tube holder (46669-G) with plusnuts keeping the vertical slot at the bottom right hand corner. Fasten tube holder (46669-G) to rear door using four (4) FAS0018 screws.



Step 04 For applications where Drill Bit Holder is not mounted to the rear door, mark and drill four (4) 17/64" holes using caution to not cause damage. Fasten using four (4) FAS0018 and four (4) FAS0055.



Step 05 Insert LDPE tubes (46833 or 46834) into tube holder and secure using two (2) FAS0044 per tube.



YOUR INSTALLATION IS NOW COMPLETE!

**DOUBLE CHECK ALL FASTENERS LOCATIONS TO BE SURE THAT ALL
FASTENERS ARE TIGHTENED TO SPECIFICATIONS.
YOUR INSTALLATION IS NOW COMPLETE!
STOW THIS COPY IN THE VEHICLE FOR FUTURE REFERENCES!**