



ADRIAN STEEL®

Cargo Management Solutions for Commercial Vehicles

Cord Holder, Black

PRODUCT WEIGHT

1.79 LBS

WIDTH X DEPTH X HEIGHT

5.73" X 4.41" X 4.49"

CAPACITY

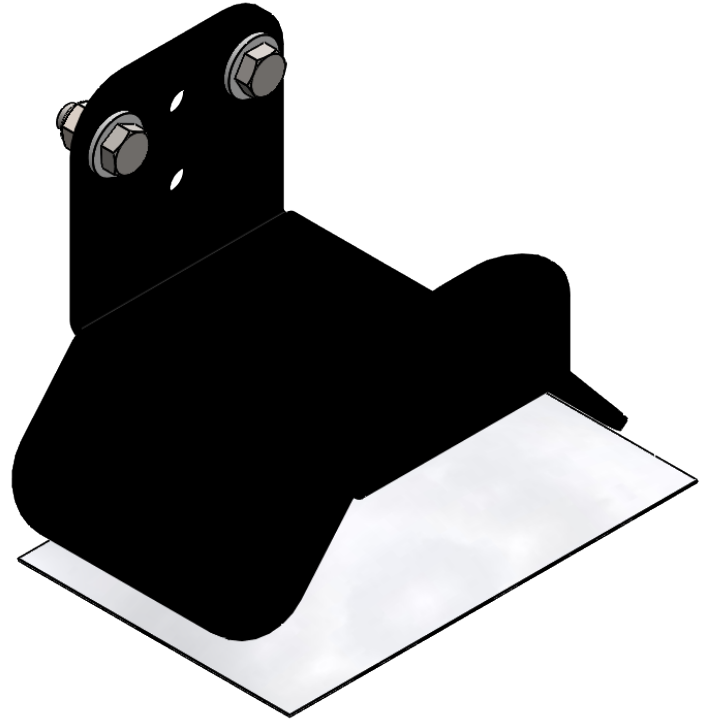
**EXTENSION CORDS,
ROPE, ETC**

COLOR

BLACK

CATALOG NUMBER

CORDHLDR



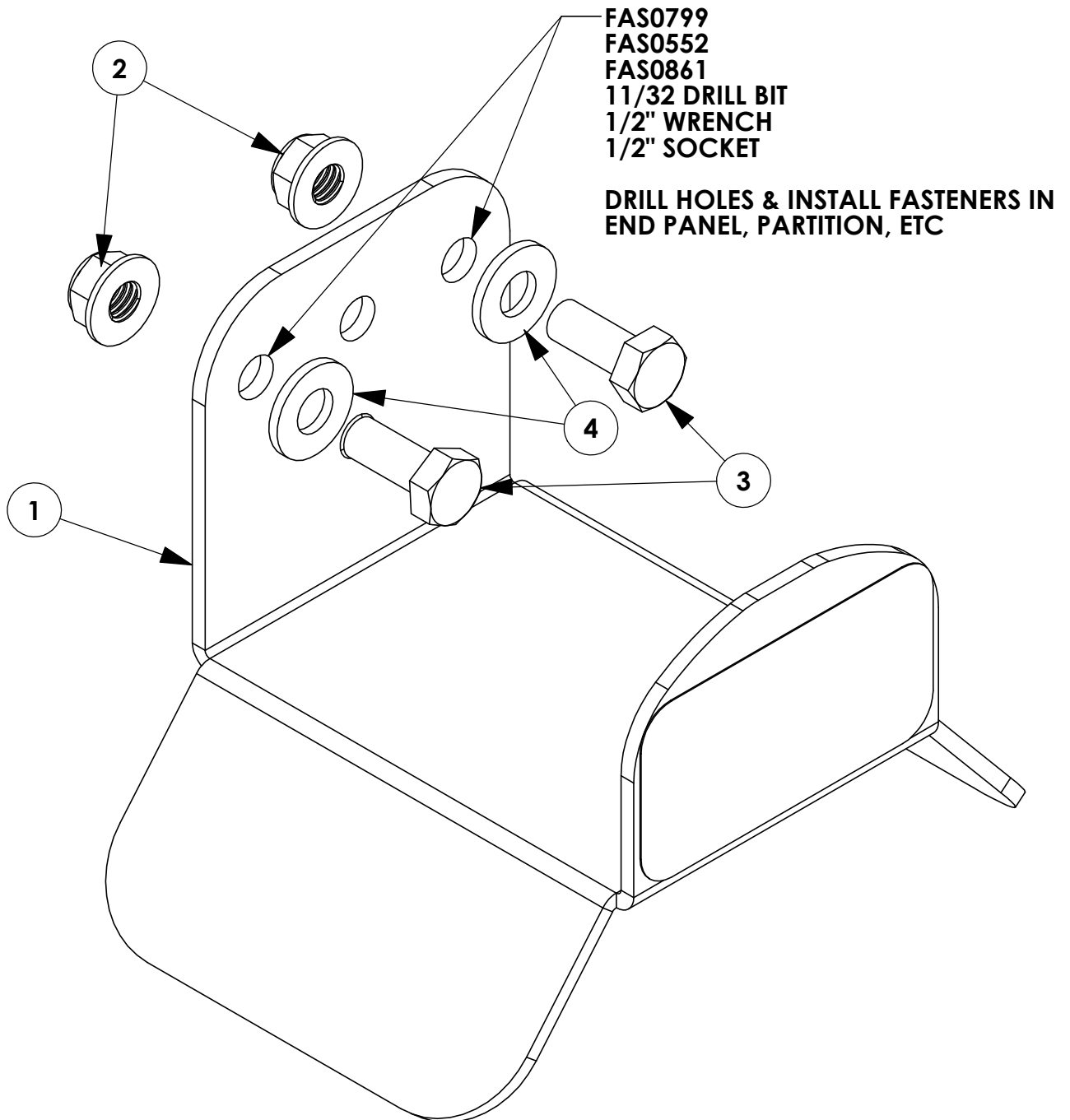
PRODUCT FEATURES

THIS PRODUCT IS USED TO CARRY CORDS. IT CAN BE USED IN ANY VEHICLE AND INSTALLED ANYWHERE (IE PARTITION, END PANEL, ETC). IS COMPATIBLE WITH NEXT GENERATION SHELVING. THIS HOLDER WILL HELP ORGANIZE CORDS INSIDE THE VAN BY PROVIDING SOMEWHERE TO CARRY THE WRAPPED CORD IN THE VEHICLE RATHER THAN JUST BE THROWN IN ON THE FLOOR OR IN A CORNER.

| INSTR. NUMBER | PG: | REV: | ITEM NO. | PART NUMBER | DESCRIPTION | QTY. |
|---------------------------------|----------|----------|----------|----------------|--------------------------------|------|
| 70045 | 1 | B | 1 | 68692-B | CORD HOLDER BRKT, BLK | 1 |
| PART NUMBER : CORDHLDR | | | 2 | FAS0861 | NUT,HEX NLK FLG 5/16-18SS | 2 |
| PART DESC. : CORD HOLDER | | | 3 | FAS0799 | Screw, Hex Hd, 5/16-18x0.75 SS | 2 |
| | | | 4 | FAS0552 | Washer, Flat, 5/16, SST | 2 |
| | | | 5 | BAGPEPACC MNT4 | BAG END PANEL MOUNTING, 4 | 1 |

BEGIN ASSEMBLY

STEP 1: INSTALL HOLDER TO END PANEL, PARTITION, ETC



FOR INSTALL ON NEW ASC END PANEL, SEE PAGE 4.

GET TO KNOW THE VEHICLE - AT THE BEGINNING OF ANY INSTALLATION, CHECK THE LOCATION OF THE FUEL TANK, FUEL LINES, BRAKE LINES, HIGH VOLTAGE BATTERIES AND WIRING HARNESSSES TO AVOID INJURY OR PROPERTY DAMAGE FROM TOOL CONTACT.

SEAL ALL EXTERIOR HOLES - ALL INSTALLATION HOLES SHOULD BE SEALED WITH BUTYL TAPE OR SILICON TO PREVENT WATER AND EXHAUST GASES FROM ENTERING THE VEHICLE.

CONTROL DRILL DEPTH - TO AVOID DAMAGE TO THE VEHICLE, USE A DRILL STOP OR CLEARED STEP BIT WHEN DRILLING INSTALLATION HOLES.

ALWAYS ADD PRIMER - WHEN ADDING INSTALLATION HOLES BE SURE TO USE A SELF-ETCHING PRIMER TO PREVENT CORROSION, FASTENER FAILURE AND INJURY.

MOUNTING POINTS MUST HAVE METAL-TO-METAL CONTACT - USE PROVIDED MOUNTING SPACERS TO ACCOMMODATE FOR VEHICLE FEATURES, CARPET OR SUBFLOORS.

PROVIDE CLEARANCE FOR SPACERS - IF THE INSTALLATION VEHICLE CONTAINS A CARPET OR SUBFLOOR, USE A 1-3/16" DIAMETER CARPET CUTTER (P/N: 31183-0) AT ALL MOUNTING LOCATIONS TO OPEN UP ROOM FOR SPACERS.

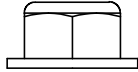
CHECK SPACER ORIENTATION - BE SURE THAT THE INDENT IN THE SPACER COVERS THE PLUSNUT HEAD; THIS ENSURES THE MOST METAL-TO-METAL CONTACT AND REDUCES VIBRATION.

PLUSNUT INSTALLATION - A PLUSNUT GUN IS RECOMMENDED FOR PLUSNUT INSTALLATION FOR ITS PRODUCTION SPEED. HOWEVER, A PLUSNUT SETTING TOOL CAN ALSO BE USED (P/N: 22200-0).

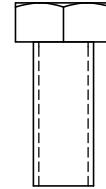
THRU-BOLT CLEARANCE - WHEN USING A THRU-BOLT AT ANY MOUNTING LOCATION, BE SURE THAT YOUR HOLE HAS 1/16" CLEARANCE.

FASTENERS USED

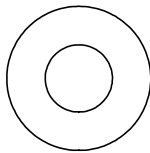
BAG REFERENCED: BAG69581 AND BAGPEPACCMNT4



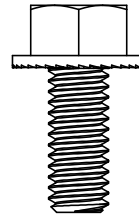
FAS0861
NUT,HEX NLK FLG 5/16-18SS
QTY: 2



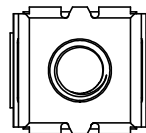
FAS0799
SCREW,HH 5/16-18X.75 SS
QTY: 2



FAS0552
WASHER,FLAT USS 5/16 SS
QTY: 2



FAS0438
SCREW,HFLNG 5/16-18X.75ZP
QTY: 4



FAS0915
SNAP-IN NUT,0.028-0.056"
QTY: 4

BEGIN ASSEMBLY

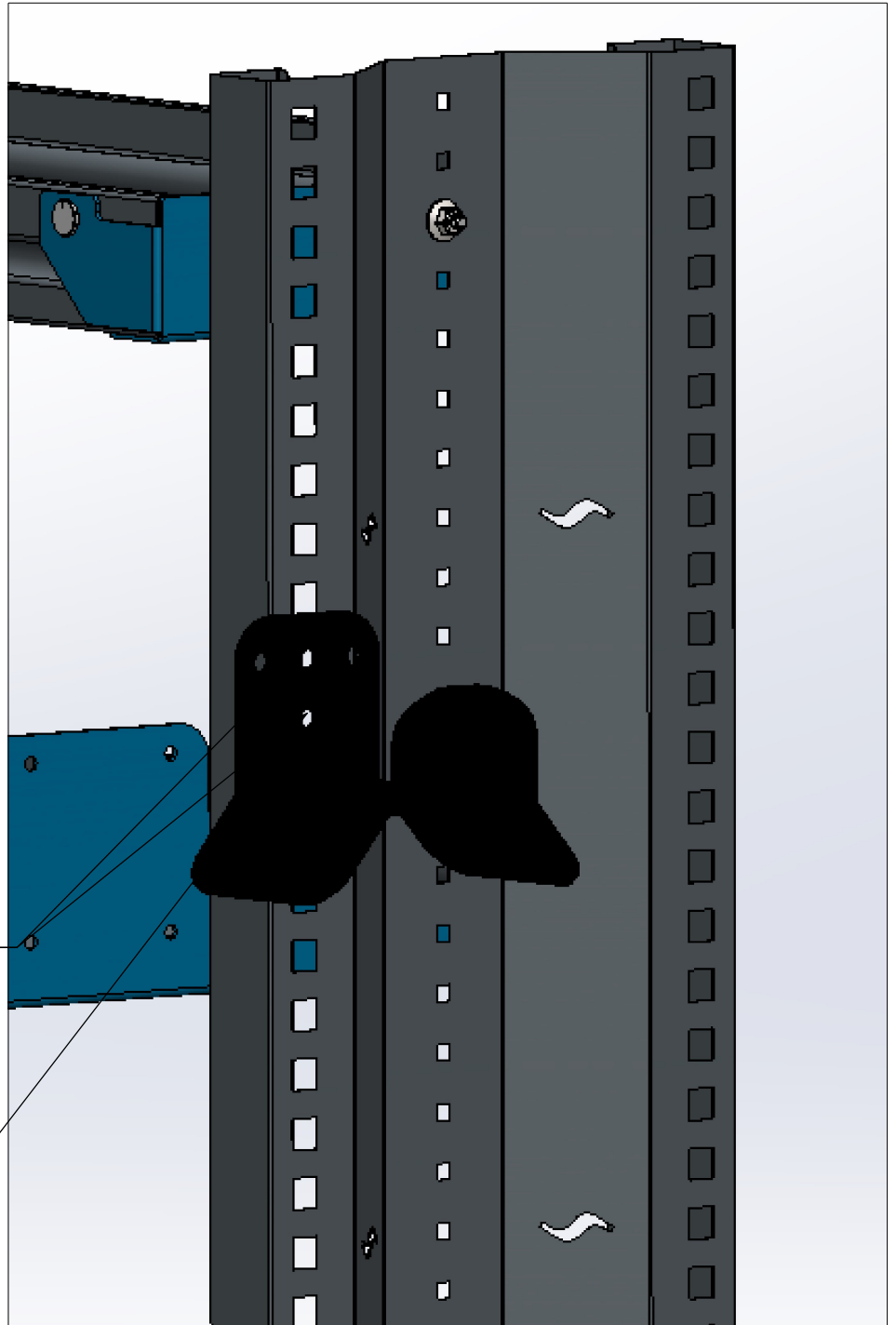
STEP 1 - MOUNTING TO NEW ASC END PANEL

**STEP 1: ALIGN
CORDHLDR
WITH SQUARE
CUT OUTS IN
END PANEL
AND PLACE
FAS0915 (QTY:
2) IN DESIRED
LOCATIONS**

**STEP 2: ALIGN
CORDHLDR
WITH FAS0915
(QTY: 2) AND
FASTEN USING
FAS0438 (QTY:
2), FULLY
TIGHTEN**

**USE FAS0438 AND FAS0915
(2 PLACES)
1/2 WRENCH OR
1/2 SOCKET**

**KEY POINT:
HOLE PATTERN
FOR NEW
SHELVING
UTILIZES
CENTERED HOLES
ONLY**



INSTALLATION IS COMPLETE!