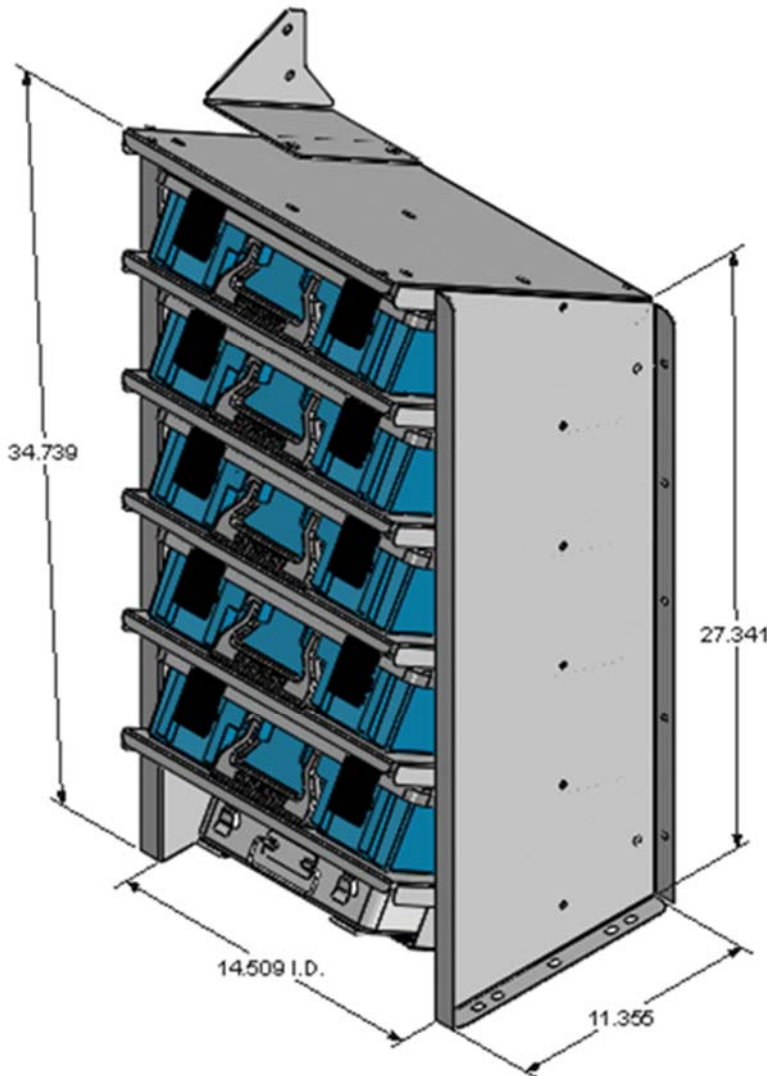


TOTE RACK ASSEMBLY



PRODUCT WEIGHT
50 LBS

WIDTH x DEPTH x HEIGHT
16.5" x 14" x 35"

CAPACITY
(5)PPCS
(1) 1ST AID KIT (OPT)

COLOR
GRAY

CATALOG NUMBER
CHPPC5SM

PRODUCT FEATURES

This item is designed to hold five (5) PPCS portable parts cases and one (1) 15372-0 first aid kit. Integrated hold pattern for mounting ladder ramp shelf assembly 49645.

SEE PAGE 2 FOR APPLICATION NOTES AND ACCESSORIES, OTHER PRODUCTS THAT WORK WITH THIS UNIT.



CATALOG NUMBER CHPPC5SM

PRODUCT APPLICATION

This product is designed for the 2014 Ford Transit Van.

ACCESSORIES THAT WILL WORK WITH THIS PRODUCT

CATALOG NUMBER	DESCRIPTION
15372-0	FIRST AID KIT
49645	LADDER SHELF ASM
DVPPCS	DIVIDER KIT PPCS, 9 QTY

SPECIAL APPLICATION NOTES

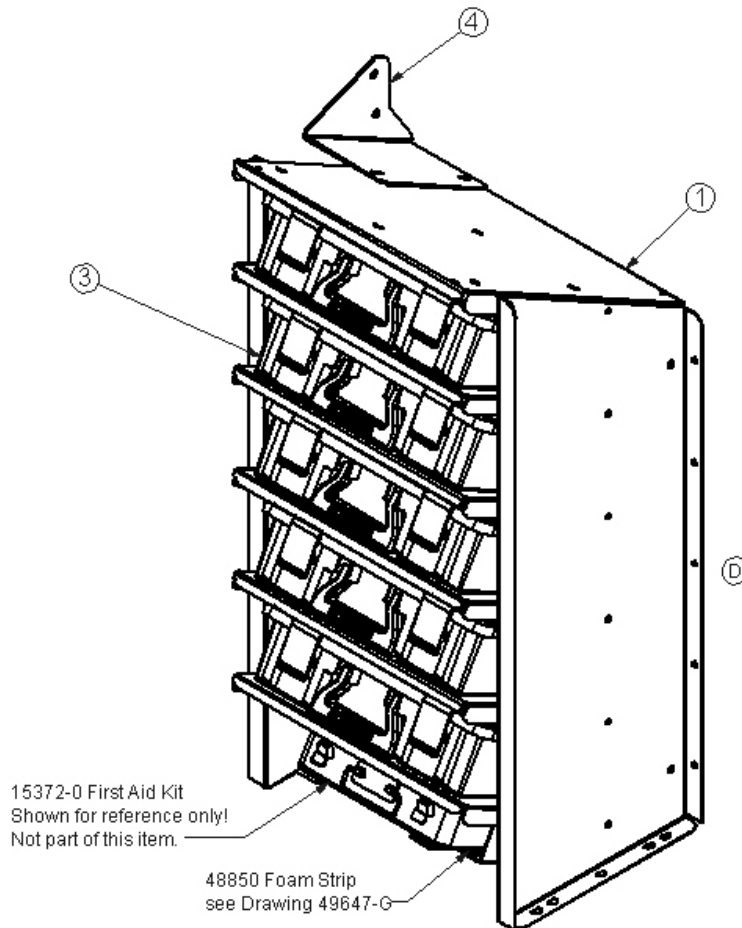
Introduction / Comments:

Rack for 5 PPCS Small Parts Totes. Will also hold a 15372-0 First Aid Kit in pocket under bottom shelf.

Note:

It is advised that all fasteners used in this assembly and installation should be checked for tightness at the following intervals: @ 2-weeks and again @ 6-weeks of operation. This preventive maintenance step must be completed to ensure your Product gives you long service life.

ITEM NO.	PART NUMBER	DESCRIPTION	CHPPC5SM/QTY.
1	49647-G	Rack Weldment	1
2	BAGCHPPCS	Fas Bag, Tote Rack	1
3	49655-G	Mtg Brkt, CHPPC5SM	1
4	PPCS	PPCS	5



CHPPC5SM Tote Rack

- PRECAUTIONS -



CAUTION



**THE USE OF AIR IMPACT TOOLS CAN
OVER-TORQUE FASTENERS AND
CAUSE FASTENER FAILURE!**



CAUTION



**ALL INSTALLATION HOLES SHOULD BE SEALED
WITH SILICON OR BUTYL SEALANT TO PREVENT
EXHAUST FUMES FROM ENTERING THE VEHICLE!**



DANGER



**INSPECT FOR FUEL TANK, FUEL LINES, BRAKE LINES, HIGH
VOLTAGE BATTERIES AND ELECTRICAL LINES PRIOR TO
DRILLING TO AVOID DAMAGING CRITICAL VEHICLE SYSTEMS
OR INJURY TO INSTALLER DURING INSTALLATION PROCESS!**



CAUTION



**TO AVOID DAMAGING THE VEHICLE ALWAYS USE DRILL
STOPS WHEN DRILLING ANY INSTALLATION HOLES!
ADRIAN AVAILABLE PART #'S 31121-0 (1/2" DEEP),
31122-0 (3/4" DEEP)**



- IMPORTANT WARRANTY REQUIREMENTS -

1. SUBSTITUTING ADRIAN STEEL SPECIFIED FASTENERS FOR ASSEMBLY AND/OR INSTALLATION WILL VOID YOUR PRODUCT WARRANTY.
2. ALL HOLES DRILLED INTO VEHICLE SHOULD HAVE THE RAW METAL EDGES SEALED WITH A SELF-ETCHING PRIMER TO RESIST CORROSION AND POTENTIAL FASTENER POINT FAILURE.
3. ALL FASTENERS USED IN THE INSTALLATION OF THIS PRODUCT SHOULD BE TIGHTENED TO THE TORQUE(S) SPECIFIED IN THESE INSTRUCTIONS.
4. THESE INSTRUCTIONS SHOULD BE KEPT WITH THE VEHICLE.

THE BASIC TOOLS NEEDED FOR MOST INSTALLATIONS



DRILL



DRILL BIT WITH
STOP



RATCHET, SOCKETS
AND/OR WRENCHES



SCREWDRIVERS



MEASURING TAPE

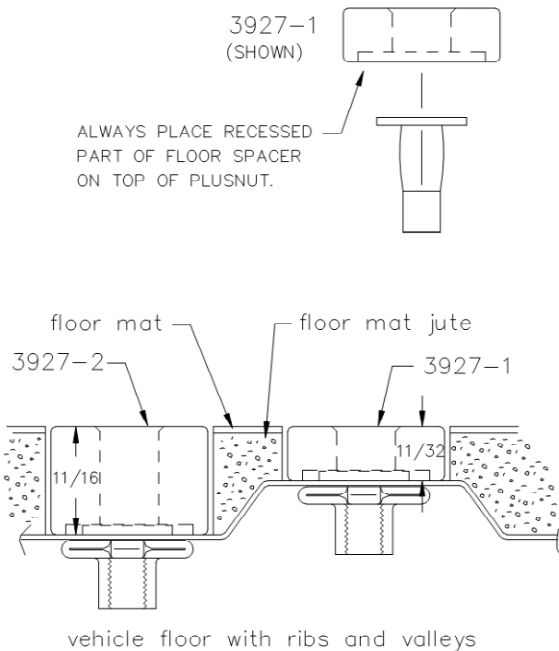
ADDITIONAL TOOLS MAY BE NEEDED FOR THIS INSTALLATION AND THEY WILL BE IDENTIFIED IN THE STEPS THAT FOLLOW.

If your vehicle contains carpet or a rubber floor mat you will need to prepare the mounting location. Position the product to be installed into the vehicle and once you are satisfied with the mounting locations, mark the mounting locations. Using a 1-3/16" diameter carpet cutter (P/N: 31183-0). Select the appropriate floor spacers as shown in the illustration. Set those aside for use later into the installation process.

Using the correct drill bit size for the selected plusnut, drill the mounting holes in the vehicle sheet metal to prepare for installing the plusnuts.

If you are thru-bolting at any of the locations simply drill a hole that is 1/16" larger than the bolt size(s) for those locations.

Once you have drilled the holes into the vehicle, the raw metal edges should be sealed using a self-etching primer to resist corrosion and potential fastener point failure.



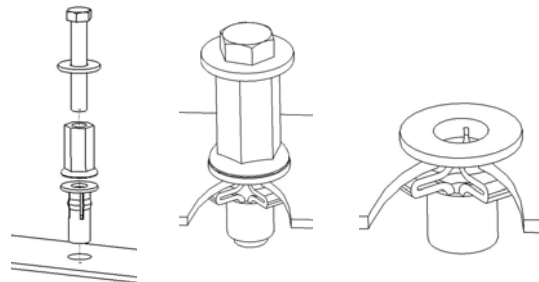
A PLUSNUT (RIVNUT) SETTING TOOL IS REQUIRED FOR PLUSNUT (RIVNUT) INSTALLATION AND IS SUPPLIED WITH THIS KIT. OR USE AN AIR POWERED PLUSNUT SETTING GUN.

1/4-20UNC Plusnut (FAS0052) Use 3/8" dia. drill w/stop

FAS0080 SCREW, HXHD, 1/4-20UNCx2.00", G8
FAS0067 WASHER, FLAT, 1/4"ID
22200-0 PLUSNUT TOOL

5/16-18UNC Plusnut (FAS0091) Use 1/2" dia. drill w/stop

FAS0095 SCREW, HXHD, 5/16-18UNCx2.00", G8
FAS0086 WASHER, FLAT, 5/16"ID
22200-0 PLUSNUT TOOL

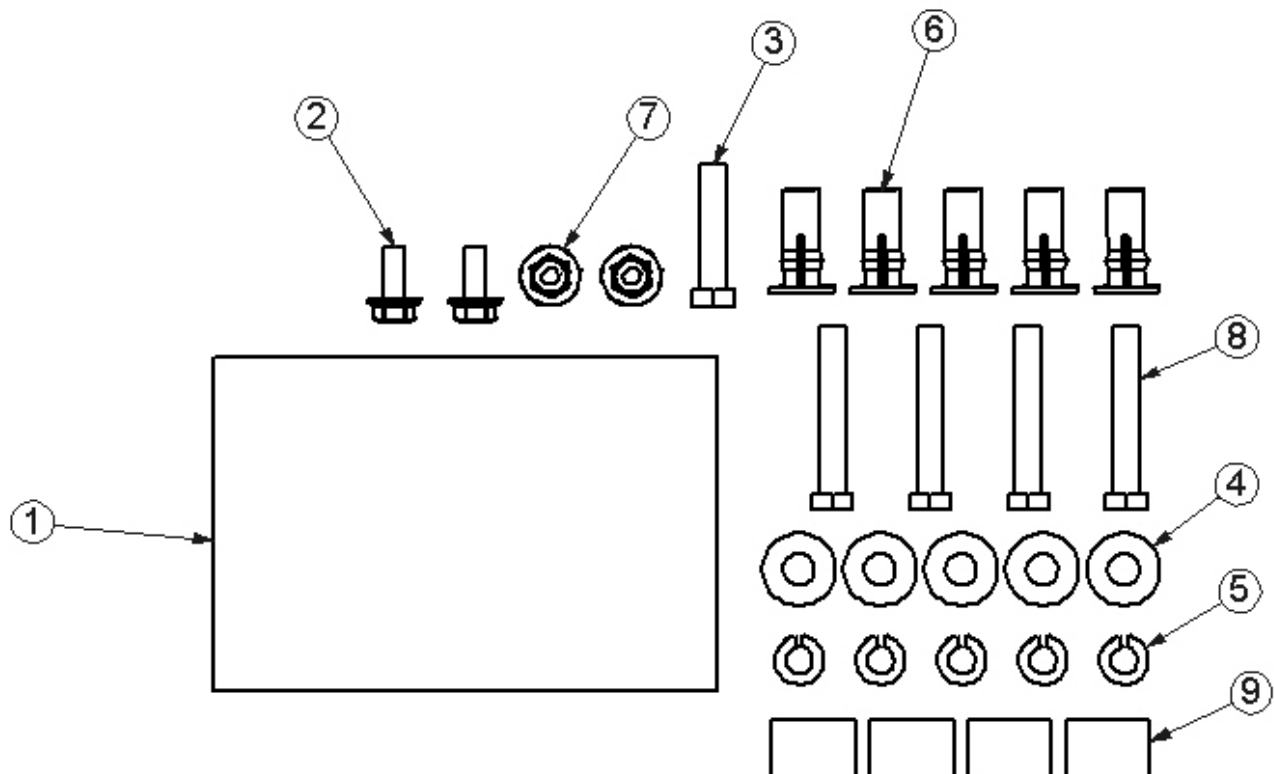


Place barrel of the plusnut body in sheet metal thru hole until flange is flush with sheet metal.

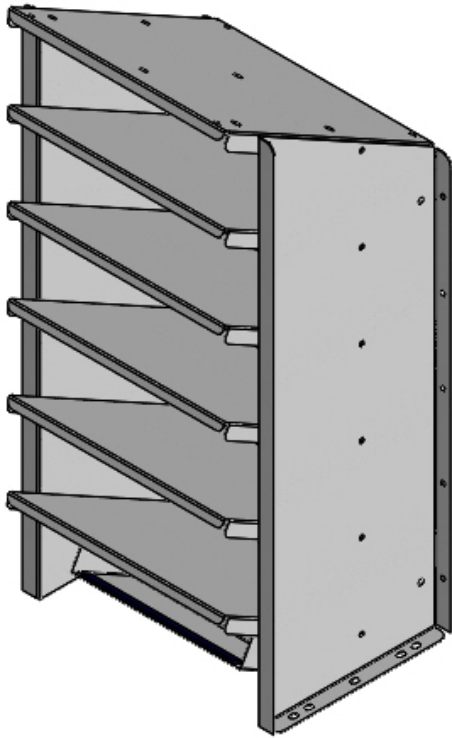
Using a 9/16" combination wrench of plusnut tool body and a second hand wrench, ratchet, or air tool, rotate the hex bolt head CW to draw plus nut flanges up (set the plusnut).

Installation and/or Assembly Fasteners
BAGCHPPCS

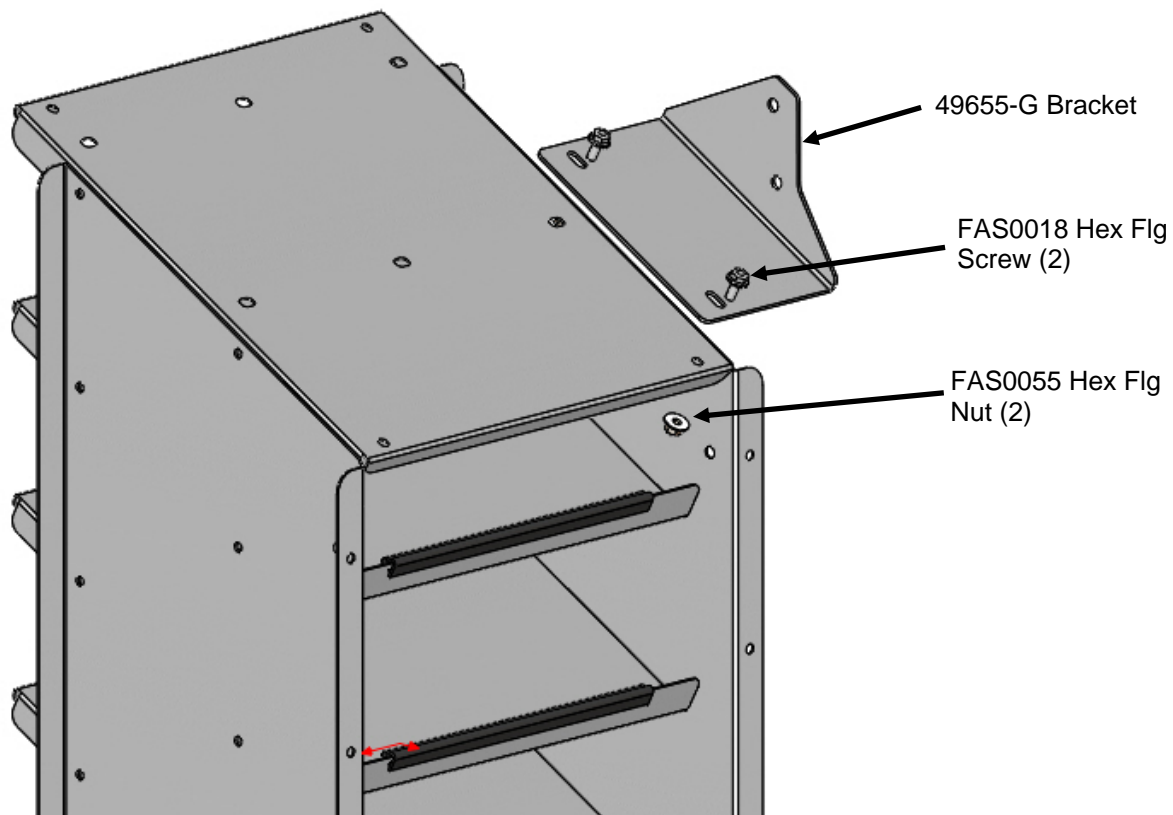
ITEM NO.	PART NUMBER	DESCRIPTION	BAGCHPPCS/QTY.
1	BAG0406-A	4" x 6" 3MIL AUTOBAG	1
2	FAS0018	SCREW,HH SFLNG 1/4-20X.62 ZP	2
3	FAS0242	Screw, Hex Hd, 5/16-18x1.50 Stainless Steel	1
4	FAS0552	Washer, Flat, 5/16, SST	5
5	FAS0588	Washer, Lock, Split, 5/16, SS	5
6	FAS0091	Plusnut, 5/16	5
7	FAS0055	Nut, Hex Flange,Nylock 1/4-20	2
8	FAS0095	Screw, Hex Hd, 5/16-18x2.00 , Grade 8	4
9	03927-2	Tall Floor Spacer	4



Step 01 Remove Totes from Rack

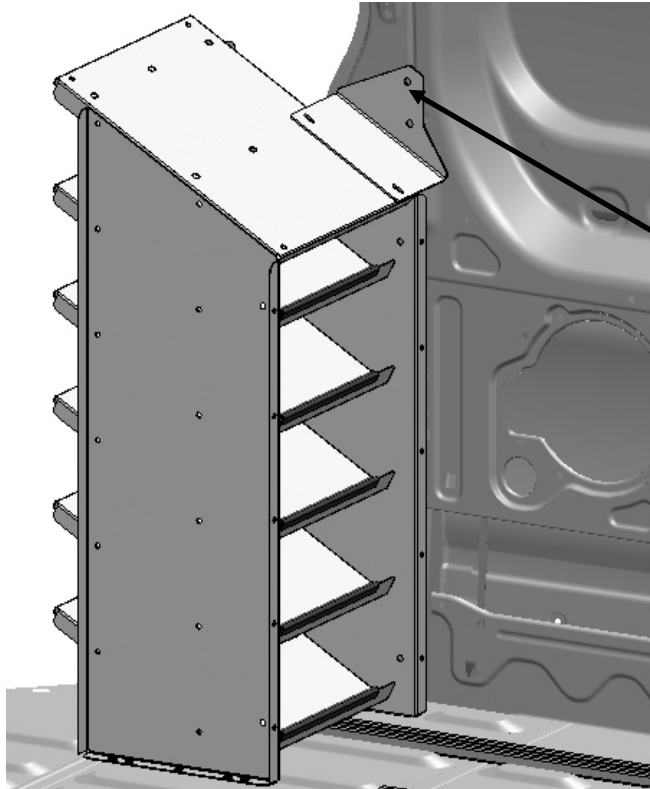


Step 02 Attach Upper Mounting Bracket



Step 03 Place in Van and mark Mounting Hole locations Drill and set Plusnuts.

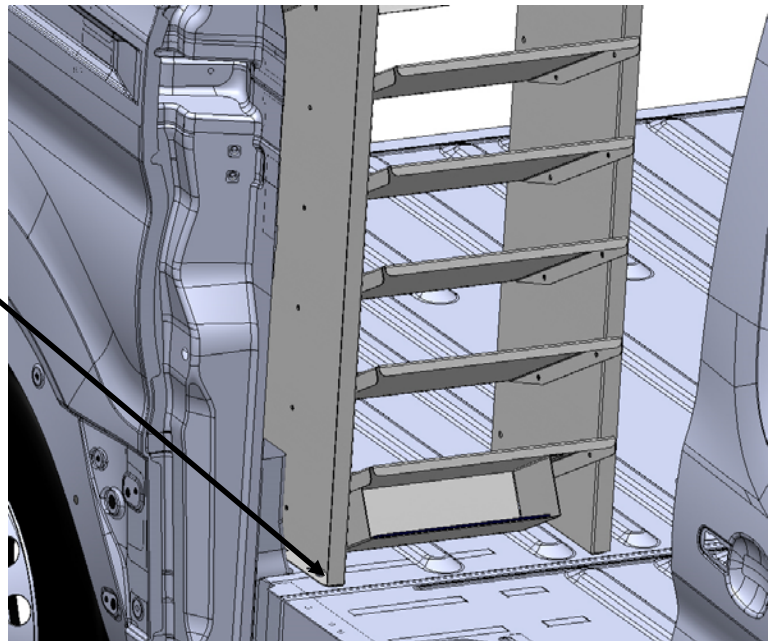
This installation is for the Ford Transit Van. Rack is located just inside and at rear of side door. If installed in other location or vehicle, refer to the PDS for mounting and bracketry.



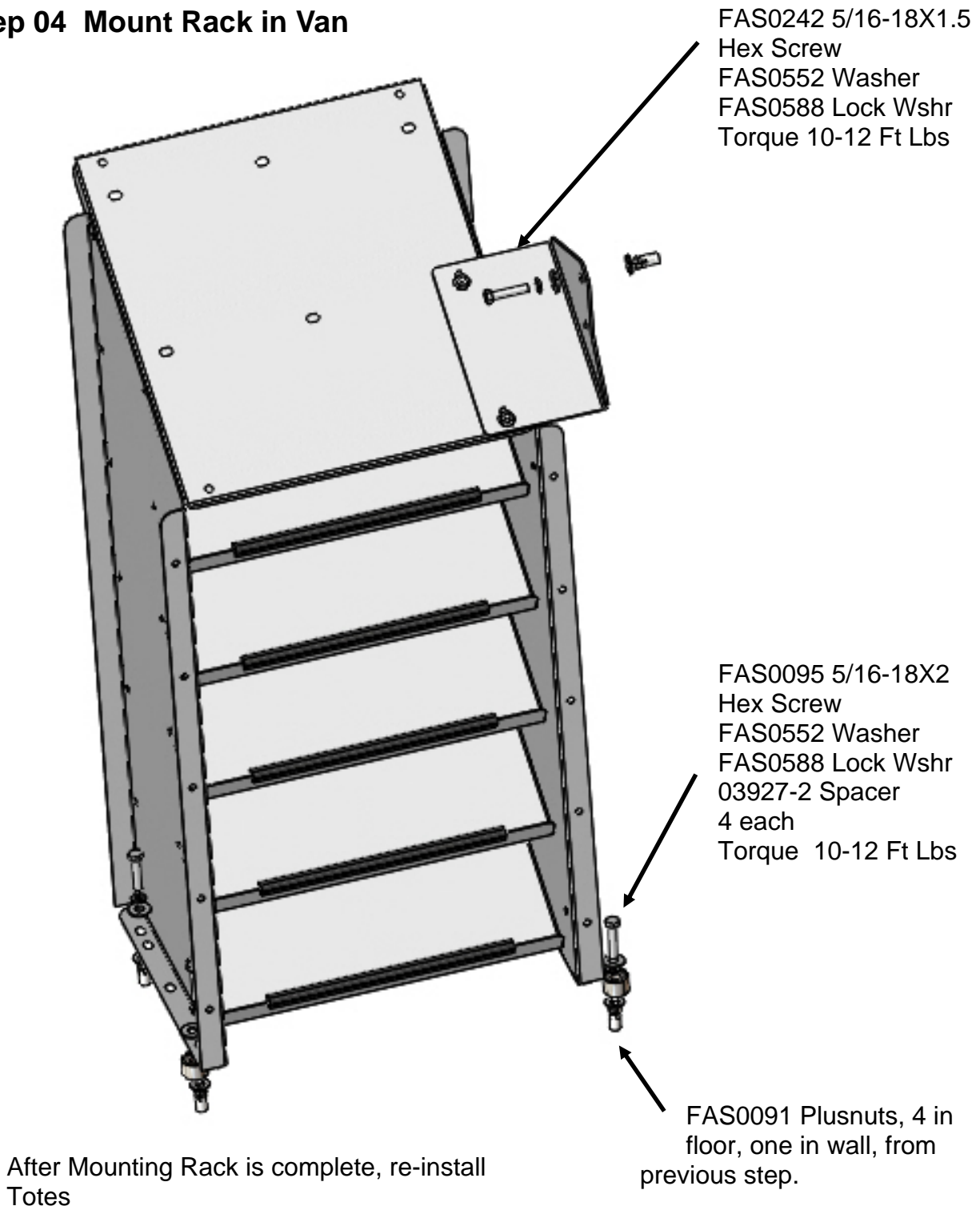
CAUTION! Use drill bits with integral stops to drill holes. Check for wiring, fuel and brake lines etc. prior to drilling!

Holes in Upper Mtg Brkt line up with existing holes in Van. Adjust Upper Mtg Brkt as necessary. Torque fasteners to 10 Ft Lbs. Mark top hole and drill out to 1/2" and set FAS0091 Plusnut.

Mark floor at forward most and rear most slots in Rack End Panels. Drill 1/2" holes and set (4) FAS0091 Plusnuts



Step 04 Mount Rack in Van



**DOUBLE CHECK ALL FASTENERS LOCATIONS TO BE SURE THAT ALL
FASTENERS ARE TIGHTENED TO SPECIFICATIONS.
YOUR INSTALLATION IS NOW COMPLETE!
STOW THIS COPY IN THE VEHICLE FOR FUTURE REFERENCES!**