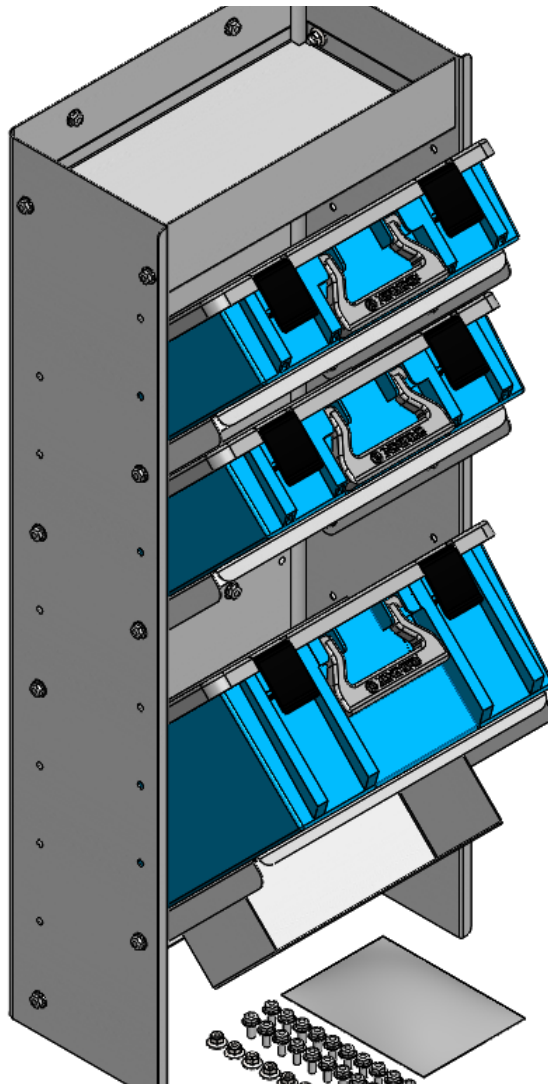


Introduction / Comments:

This product (CH-EP) is designed to provide curb side (passenger) shelving with removable plastic totes.

Note:

It is advised that all fasteners used in this assembly and installation should be checked for tightness at the following intervals: @ 2-weeks and again @ 6-weeks of operation. This preventive maintenance step must be completed to ensure your product gives you long service life.



CH-EP
Case Holder Assembly

- PRECAUTIONS -



CAUTION



**THE USE OF AIR IMPACT TOOLS CAN
OVER-TORQUE FASTENERS AND
CAUSE FASTENER FAILURE!**



CAUTION



**ALL INSTALLATION HOLES SHOULD BE SEALED
WITH SILICONE OR BUTYL SEALANT TO PREVENT
EXHAUST FUMES FROM ENTERING THE VEHICLE!**



DANGER



**INSPECT FOR FUEL TANK, FUEL LINES, BRAKE LINES, HIGH
VOLTAGE BATTERIES AND ELECTRICAL LINES PRIOR TO
DRILLING TO AVOID DAMAGING CRITICAL VEHICLE SYSTEMS
OR INJURY TO INSTALLER DURING INSTALLATION PROCESS!**



CAUTION



**TO AVOID DAMAGING THE VEHICLE ALWAYS
USE DRILL STOPS WHEN DRILLING ANY IN-
STALLATION HOLES!**



- IMPORTANT WARRANTY REQUIREMENTS -

1. SUBSTITUTING ADRIAN STEEL SPECIFIED FASTENERS FOR ASSEMBLY AND/OR INSTALLATION WILL VOID YOUR PRODUCT WARRANTY.
2. ALL HOLES DRILLED INTO VEHICLE SHOULD HAVE THE RAW METAL EDGES SEALED WITH A SELF-ETCHING PRIMER TO RESIST CORROSION AND POTENTIAL FASTENER POINT FAILURE.
3. ALL FASTENERS USED IN THE INSTALLATION OF THIS PRODUCT SHOULD BE TIGHTENED TO THE TORQUE(S) SPECIFIED IN THESE INSTRUCTIONS.
4. THESE INSTRUCTIONS SHOULD BE KEPT WITH THE VEHICLE.

THE BASIC TOOLS NEEDED FOR MOST INSTALLATIONS



DRILL



DRILL BIT WITH
STOP



RATCHET, SOCKETS
AND/OR WRENCHES



SCREWDRIVERS



MEASURING TAPE

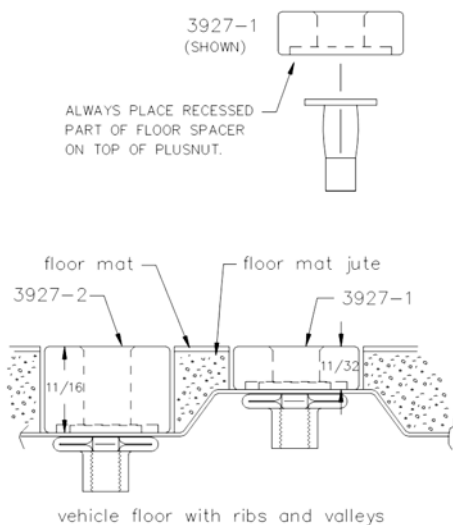
ADDITIONAL TOOLS MAY BE NEEDED FOR THIS INSTALLATION AND THEY WILL BE IDENTIFIED IN THE STEPS THAT FOLLOW.

If your vehicle contains carpet or a rubber floor mat you will need to prepare the mounting location. Position the product to be installed into the vehicle and once you are satisfied with the mounting locations, mark the mounting locations. Using a 1-3/16" diameter carpet cutter (P/N: 31183-0). Select the appropriate floor spacers as shown in the illustration. Set those aside for use later into the installation process. Using the correct drill bit size for the selected plusnut, drill the mounting holes in the vehicle sheet metal to prepare for installing the plusnuts.

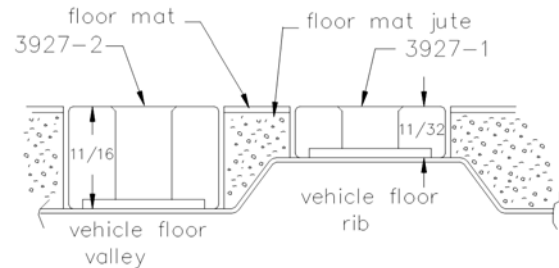
If you are thru-bolting at any of the locations simply drill a hole that is 1/16" larger than the bolt size(s) for those locations.

Once you have drilled the holes into the vehicle, the raw metal edges should be sealed using a self-etching primer to resist corrosion and potential fastener point failure.

Spacer Use and Installation



Placing the properly sized spacer on top of the vehicle floor pan will make your Adrian interior level, square, and sound. The view below shows the proper sized spacer for the different heights of the vehicle floor. Make sure to place the spacers with the plusnut relief surface down as shown.



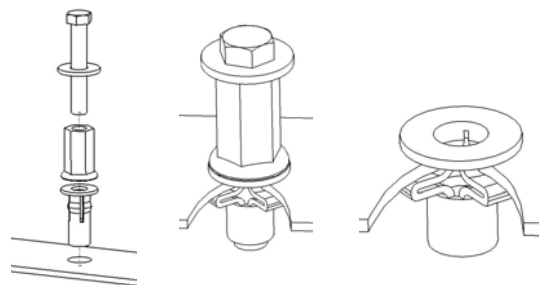
A PLUSNUT (RIVNUT) SETTING TOOL IS REQUIRED FOR PLUSNUT (RIVNUT) INSTALLATION AND IS SUPPLIED WITH THIS KIT. OR USE AN AIR POWERED PLUSNUT SETTING GUN.

1/4-20UNC Plusnut (FAS0052) Use 3/8" dia. drill w/stop

FAS0080 SCREW, HXHD, 1/4-20UNCx2.00", G8
FAS0067 WASHER, FLAT, 1/4"ID
22200-0 PLUSNUT TOOL

5/16-18UNC Plusnut (FAS0091) Use 1/2" dia. drill w/stop

FAS0095 SCREW, HXHD, 5/16-18UNCx2.00", G8
FAS0086 WASHER, FLAT, 5/16"ID
22200-0 PLUSNUT TOOL

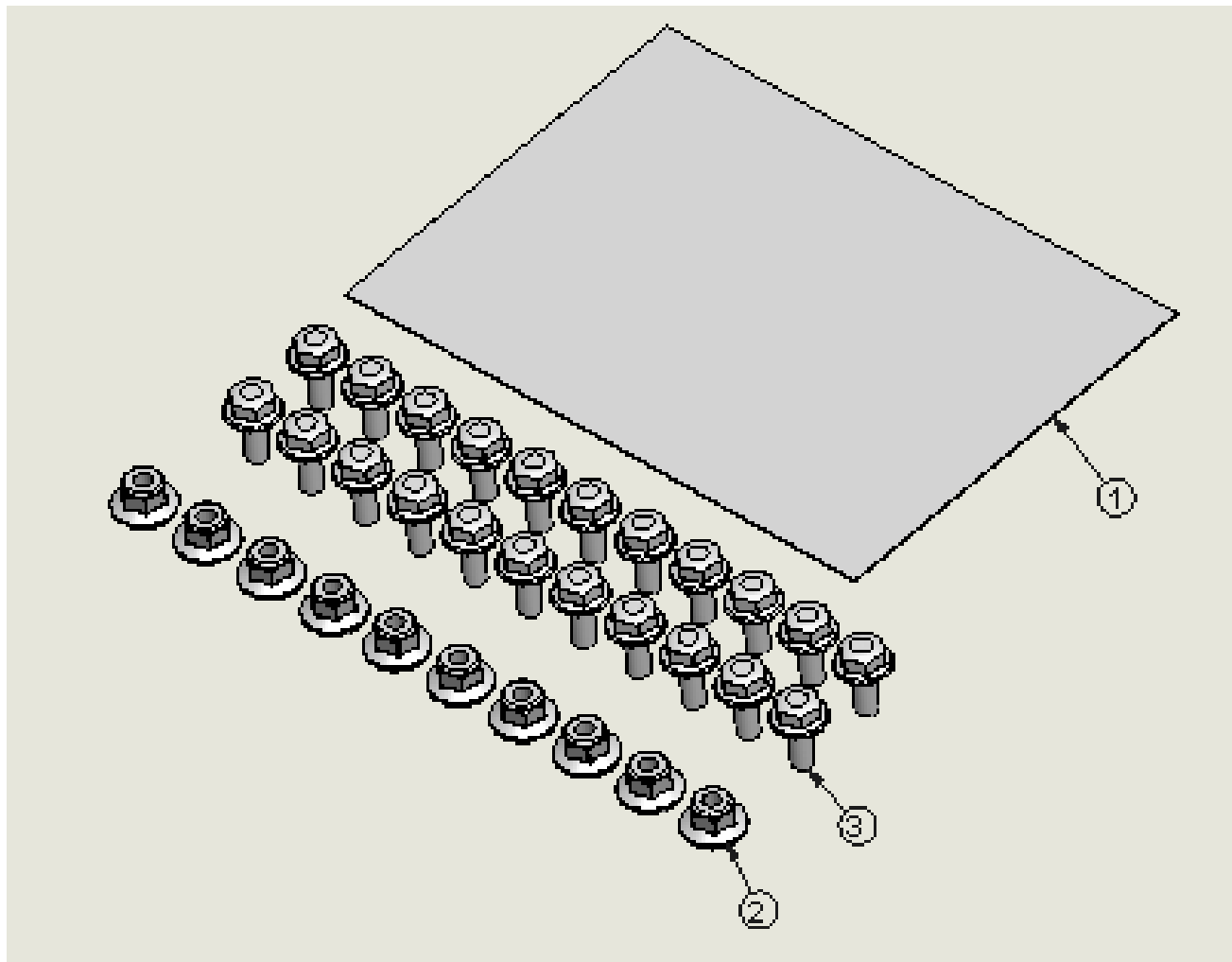


Place barrel of the plusnut body in sheet metal thru hole until flange is flush with sheet metal.

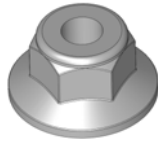
Using a 9/16" combination wrench of plusnut tool body and a second hand wrench, ratchet, or air tool, rotate the hex bolt head CW to draw plus nut flanges up (set the plusnut).

Installation and/or Assembly Fasteners
BAG46208

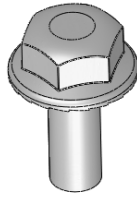
ITEM NO.	PART NUMBER	DESCRIPTION	BAG46208/QTY.
1	BAG0507-A	5" x 7" 3MIL AUTOBAG	1
2	FAS0055	Nut, Hex Flange,Nylock 1/4-20	10
3	FAS0018	SCREW,HH SFLNG 1/4-20X.62 ZP	22



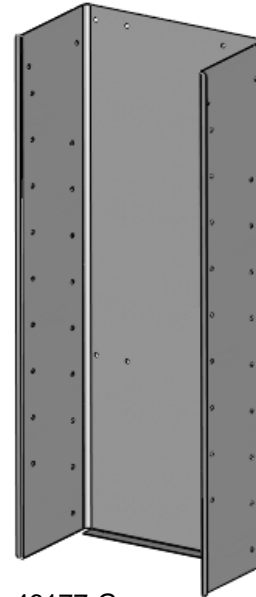
Component Images & Descriptions



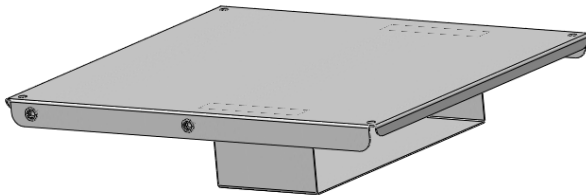
FAS0055
NUT, HXFLNG,
NYLON LOCK,
1/4-20UNC



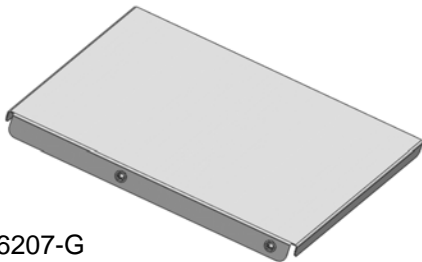
FAS0018
SCREW, HH, SFLNG
1/4-20UNC X 5/8"



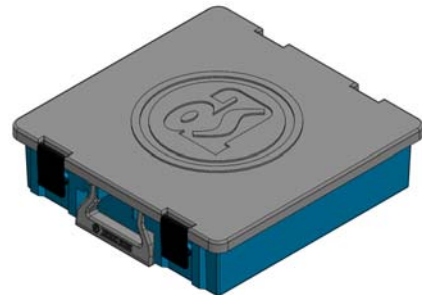
46177-G
CASE HOLDER
PANEL
QTY = 1



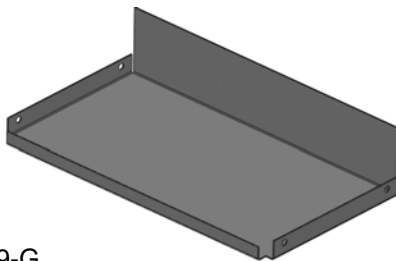
46178-G
CASE HOLDER
LONG SHELF
QTY = 1



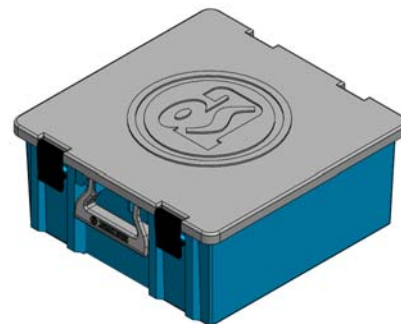
46207-G
CASE HOLDER
SHORT SHELF
QTY = 2



PPCS
PORTABLE PARTS CASE SMALL
QTY = 2

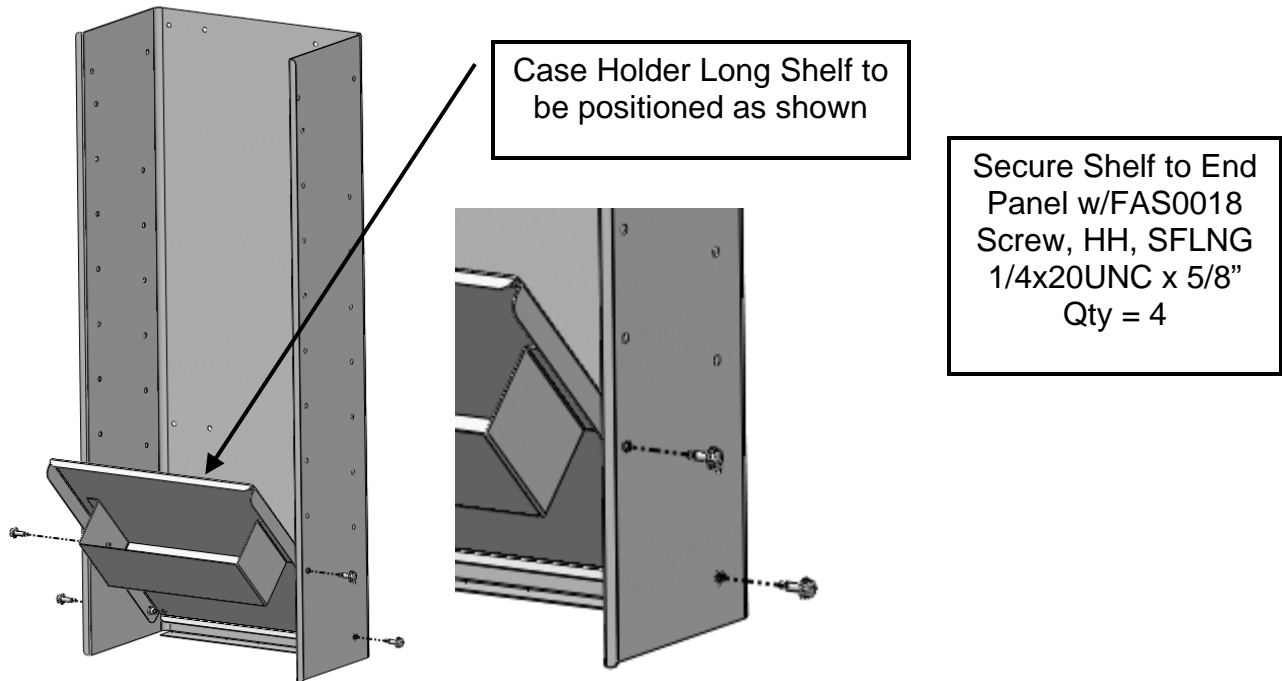


46179-G
CASE HOLDER
COVER
QTY = 1

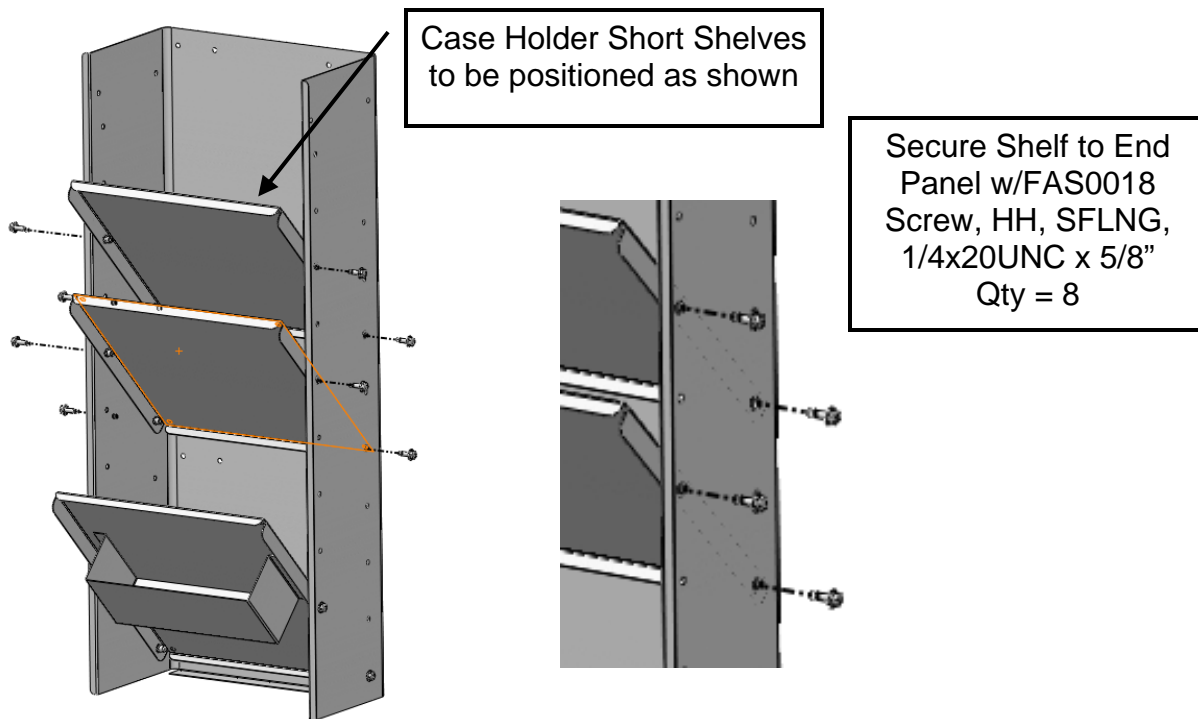


PPCL
PORTABLE PARTS CASE LARGE
QTY = 1

STEP 01 Secure Case Holder Long Shelf (46178-G) to Case Holder Pnl (46177-G)



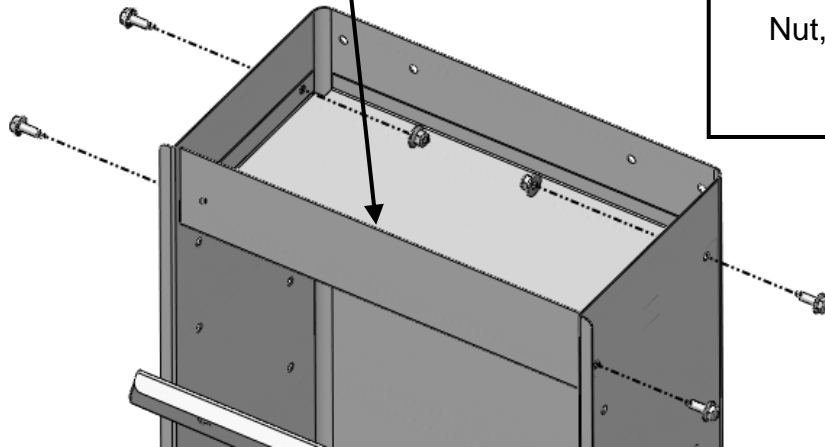
STEP 02 Secure Case Holder Short Shelf (46207G) to Case Holder Pnl (46177-G)



STEP 03 Case Holder Cover (46179-G) to Case Holder Panel (46177-G)

Case Holder Top Cover to be positioned as shown (Both Sides)

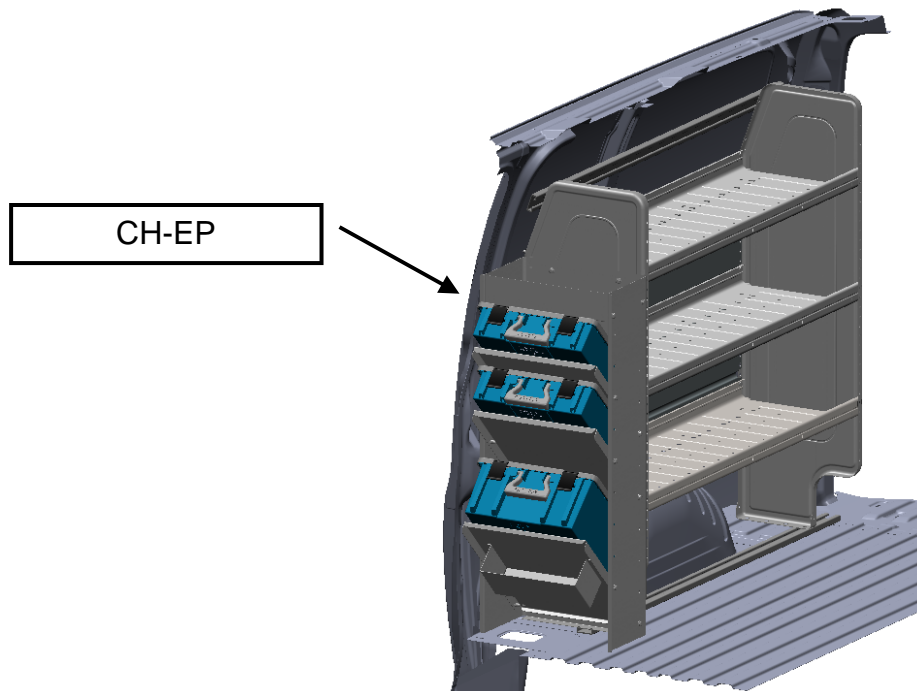
Secure Shelf to End Panel w/FAS0018 Screw, HH, SFLNG, 1/4x20UNC x 5/8" FAS0055 Nut, Nylk, HxFlgHd, 1/4-20UNC Qty = 4



STEP 04 Position (CH-EP) in the vehicle as shown, secure in place.

Shelf assembly and rail kit previously installed as shown below per kit installation instructions.

Components to be installed on the Curb Side (Passenger) of the vehicle.



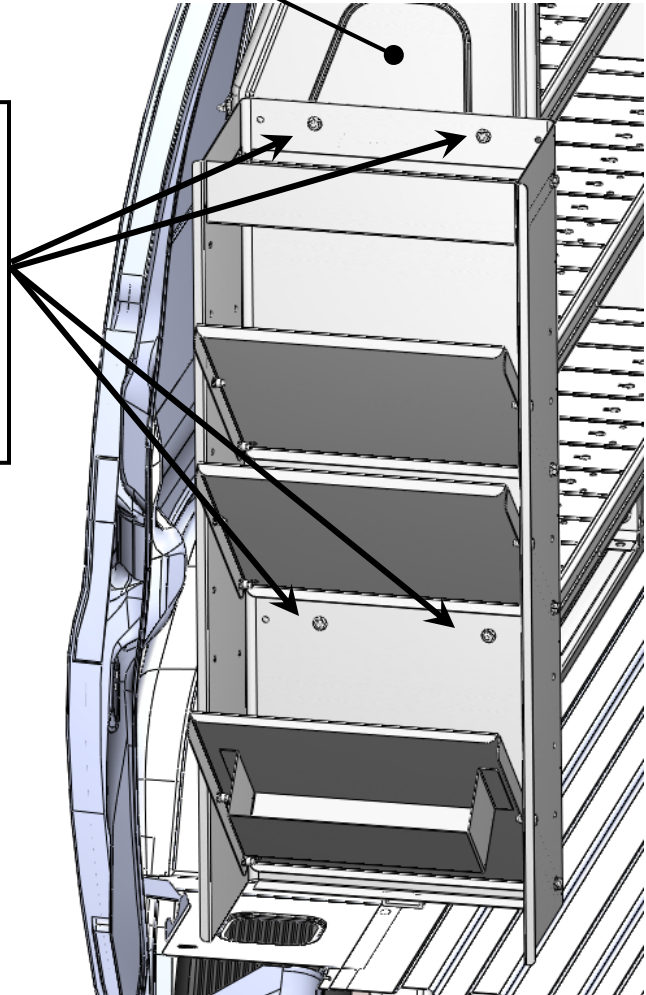
STEP 05 Mark CH-EP / AD44FP attachment holes (4-pl)

Curbside end panel

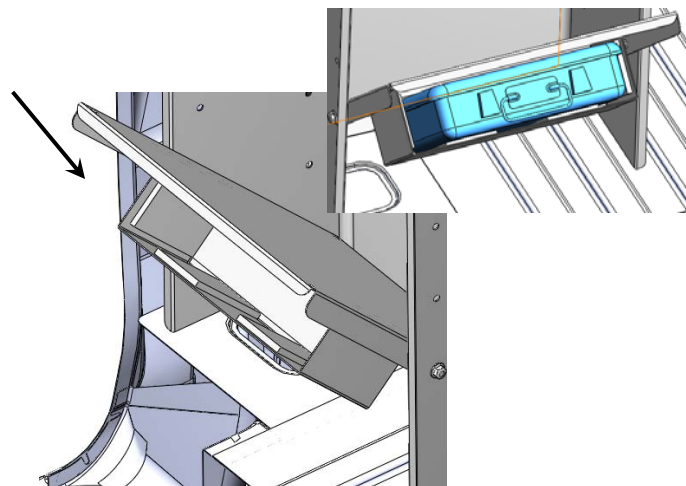
Position the CH-EP against the installed curbside end panel as shown below. Mark the four CH-EP to the end panel mounting thru holes (Bold Arrows in View)

Set CH-EP aside and drill (0.312"dia) holes at the marked holes in the end panel

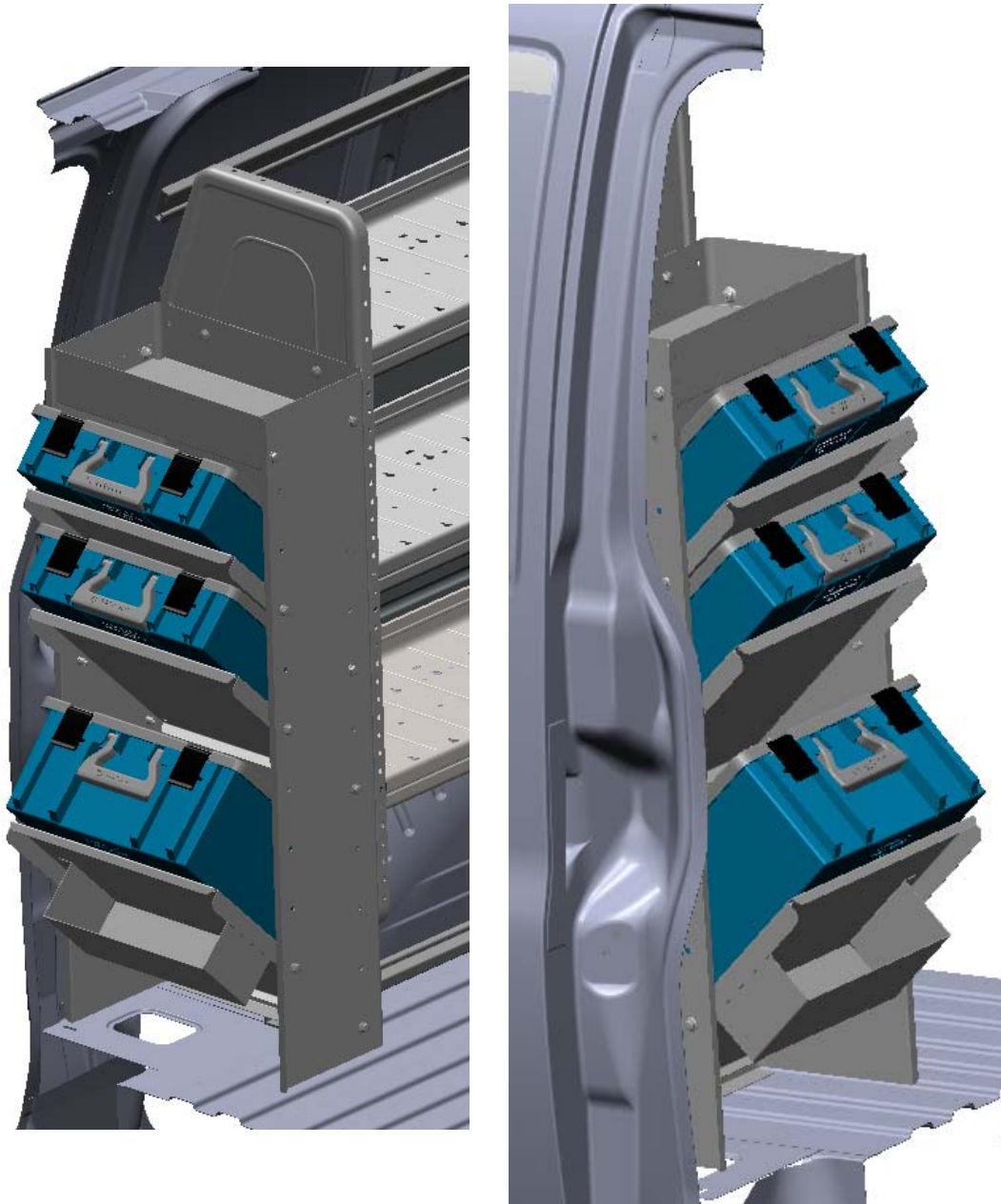
Secure CH-EP to End Panel w/
FAS0018
Screw, HH, SLFNG,
1/4x20UNC x 5/8"
FAS0055
Nut, Nylk, HxFIgHd,
1/4-20UNC
Qty = 4



NOTE:
If tray is to be used to stow the
First Aid Kit (15372-0)
Install Foam Tape (26650-0)
As shown in lower right views
to reduce road induced noise



STEP 05 Final Installation Completed (w/plastic totes installed)



**DOUBLE CHECK ALL FASTENER LOCATIONS TO BE SURE
THAT ALL FASTENERS ARE TIGHTENED TO SPECIFICATIONS.**

**YOUR INSTALLATION IS NOW COMPLETE!
STOW THIS COPY IN THE VEHICLE FOR
FUTURE REFERENCE!**