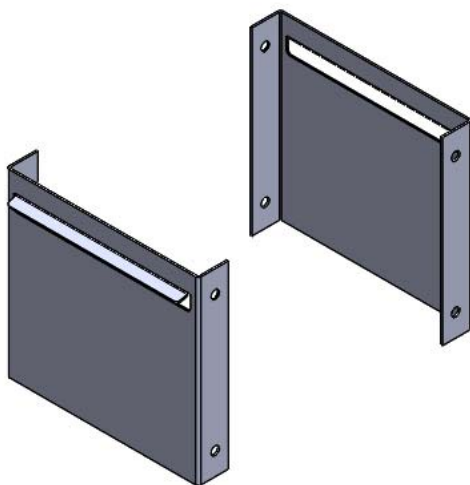


CNT,CONSOL,HANG FILE, 6"



PRODUCT WEIGHT
4.25 LBS

WIDTH x DEPTH x HEIGHT
6.2" x 1" x 6"

CAPACITY

COLOR
GRAY

CATALOG NUMBER
CCDHF6

PRODUCT FEATURES

**HANGING FILE KIT IS DESIGNED TO HOLD LEGAL AND LETTER
SIZE HANGING FILES IN THE CCD6.**

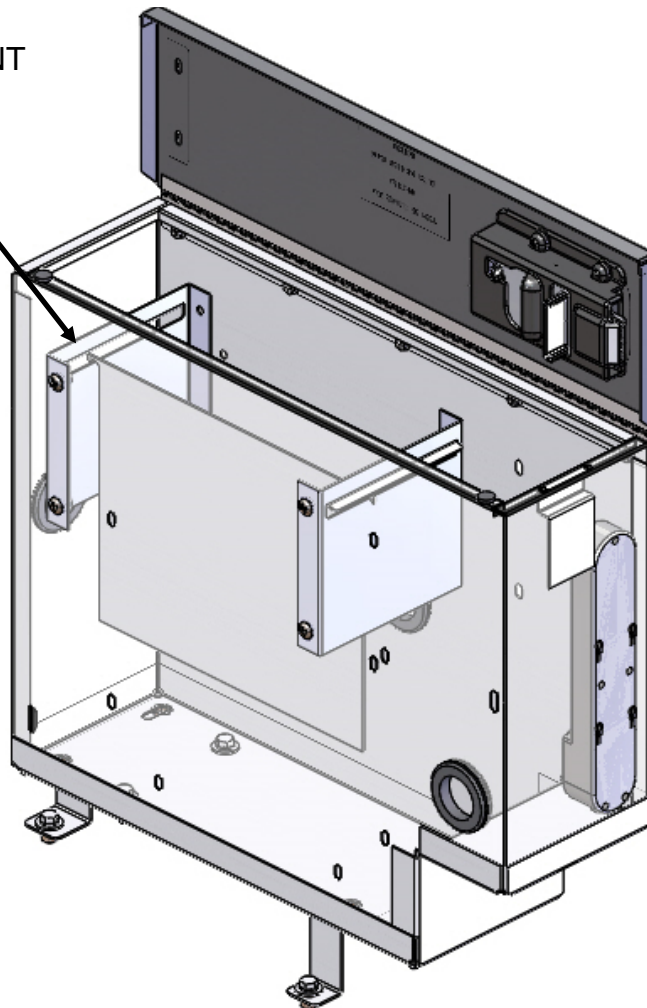
Introduction / Comments:

**CCDHF6 GRAY AND CCDHF6-B BLACK HANGING FILE BRKT KIT FOR CCD6 FOR 2015 FORD TRANSIT, DESIGNED TO HOLD LETTER OR LEGAL FILES.
IT WILL NOT WORK WITH LAPTOP HOLDER OR PA9.**

Note:

It is advised that all fasteners used in this assembly and installation should be checked for tightness at the following intervals: @ 2-weeks and again @ 6-weeks of operation. This preventive maintenance step must be completed to ensure your Product gives you long service life.

SHOWN TRANSPARENT
FOR CLARITY



**CCDHF6 GRAY AND CCDHF6-B BLACK HANGING FILE
BRKT KIT FOR CCD6 IN 2015 FORD TRANSIT**

- PRECAUTIONS -



CAUTION



**THE USE OF AIR IMPACT TOOLS CAN
OVER-TORQUE FASTENERS AND
CAUSE FASTENER FAILURE!**



CAUTION



**ALL INSTALLATION HOLES SHOULD BE SEALED
WITH SILICON OR BUTYL SEALANT TO PREVENT
EXHAUST FUMES FROM ENTERING THE VEHICLE!**



DANGER



**INSPECT FOR FUEL TANK, FUEL LINES, BRAKE LINES, HIGH
VOLTAGE BATTERIES AND ELECTRICAL LINES PRIOR TO
DRILLING TO AVOID DAMAGING CRITICAL VEHICLE SYSTEMS
OR INJURY TO INSTALLER DURING INSTALLATION PROCESS!**



CAUTION



**TO AVOID DAMAGING THE VEHICLE ALWAYS USE DRILL
STOPS WHEN DRILLING ANY INSTALLATION HOLES!
ADRIAN AVAILABLE PART #'S 31121-0 (1/2" DEEP),
31122-0 (3/4" DEEP)**



- IMPORTANT WARRANTY REQUIREMENTS -

1. SUBSTITUTING ADRIAN STEEL SPECIFIED FASTENERS FOR ASSEMBLY AND/OR INSTALLATION WILL VOID YOUR PRODUCT WARRANTY.
2. ALL HOLES DRILLED INTO VEHICLE SHOULD HAVE THE RAW METAL EDGES SEALED WITH A SELF-ETCHING PRIMER TO RESIST CORROSION AND POTENTIAL FASTENER POINT FAILURE.
3. ALL FASTENERS USED IN THE INSTALLATION OF THIS PRODUCT SHOULD BE TIGHTENED TO THE TORQUE(S) SPECIFIED IN THESE INSTRUCTIONS.
4. THESE INSTRUCTIONS SHOULD BE KEPT WITH THE VEHICLE.

THE BASIC TOOLS NEEDED FOR MOST INSTALLATIONS



DRILL



DRILL BIT WITH
STOP



RATCHET, SOCKETS
AND/OR WRENCHES



SCREWDRIVERS



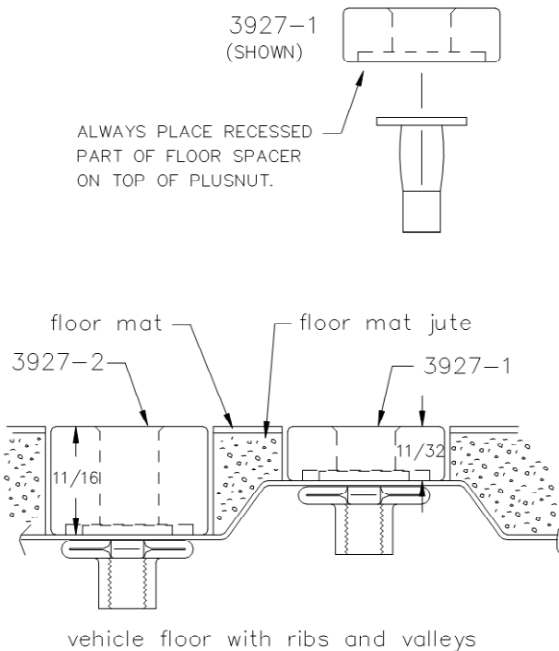
MEASURING TAPE

ADDITIONAL TOOLS MAY BE NEEDED FOR THIS INSTALLATION AND THEY WILL BE IDENTIFIED IN THE STEPS THAT FOLLOW.

If your vehicle contains carpet or a rubber floor mat you will need to prepare the mounting location. Position the product to be installed into the vehicle and once you are satisfied with the mounting locations, mark the mounting locations. Using a 1-3/16" diameter carpet cutter (P/N: 31183-0). Select the appropriate floor spacers as shown in the illustration. Set those aside for use later into the installation process. Using the correct drill bit size for the selected plusnut, drill the mounting holes in the vehicle sheet metal to prepare for installing the plusnuts.

If you are thru-bolting at any of the locations simply drill a hole that is 1/16" larger than the bolt size(s) for those locations.

Once you have drilled the holes into the vehicle, the raw metal edges should be sealed using a self-etching primer to resist corrosion and potential fastener point failure.



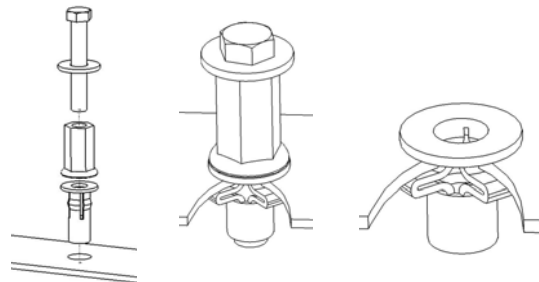
A PLUSNUT (RIVNUT) SETTING TOOL IS REQUIRED FOR PLUSNUT (RIVNUT) INSTALLATION AND IS SUPPLIED WITH THIS KIT. OR USE AN AIR POWERED PLUSNUT SETTING GUN.

1/4-20UNC Plusnut (FAS0052) Use 3/8" dia. drill w/stop

FAS0080 SCREW, HXHD, 1/4-20UNCx2.00", G8
FAS0067 WASHER, FLAT, 1/4"ID
22200-0 PLUSNUT TOOL

5/16-18UNC Plusnut (FAS0091) Use 1/2" dia. drill w/stop

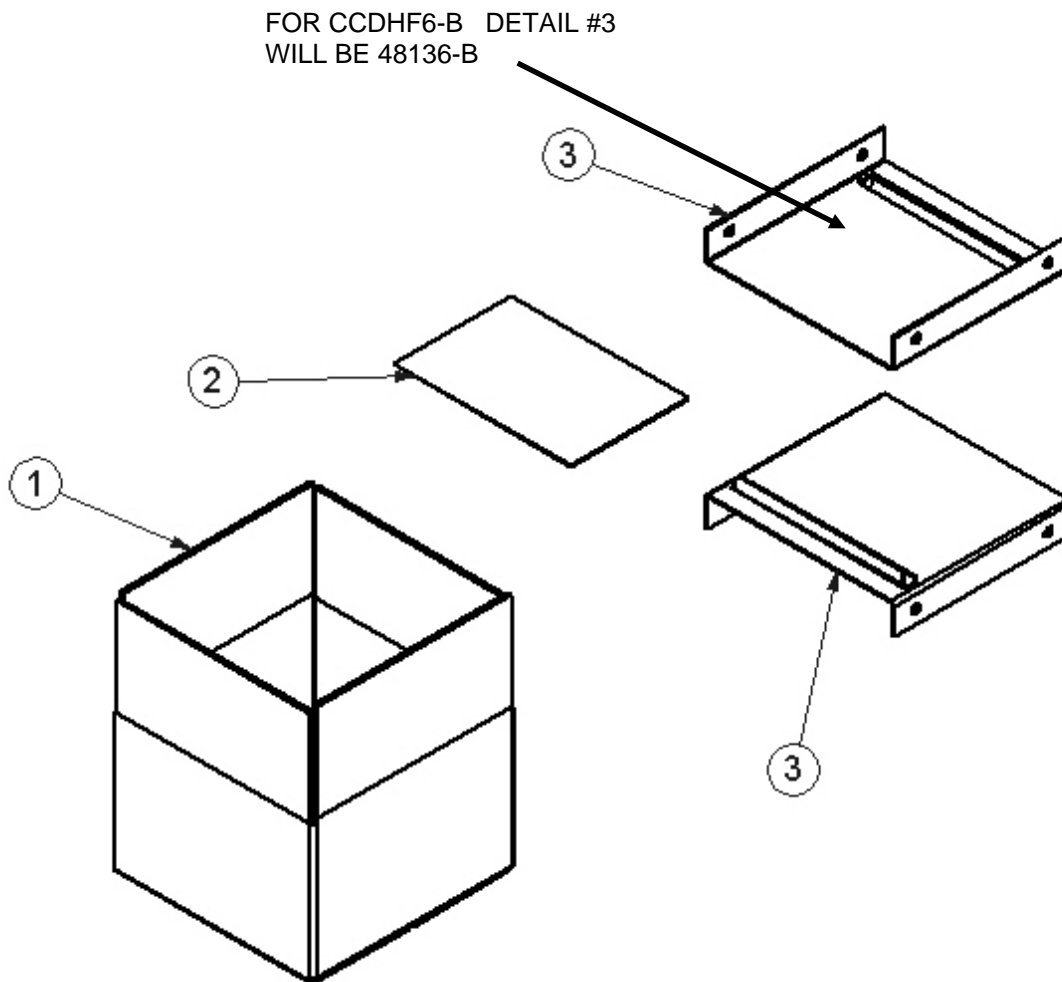
FAS0095 SCREW, HXHD, 5/16-18UNCx2.00", G8
FAS0086 WASHER, FLAT, 5/16"ID
22200-0 PLUSNUT TOOL



Place barrel of the plusnut body in sheet metal thru hole until flange is flush with sheet metal. Using a 9/16" combination wrench of plusnut tool body and a second hand wrench, ratchet, or air tool, rotate the hex bolt head CW to draw plus nut flanges up (set the plusnut).

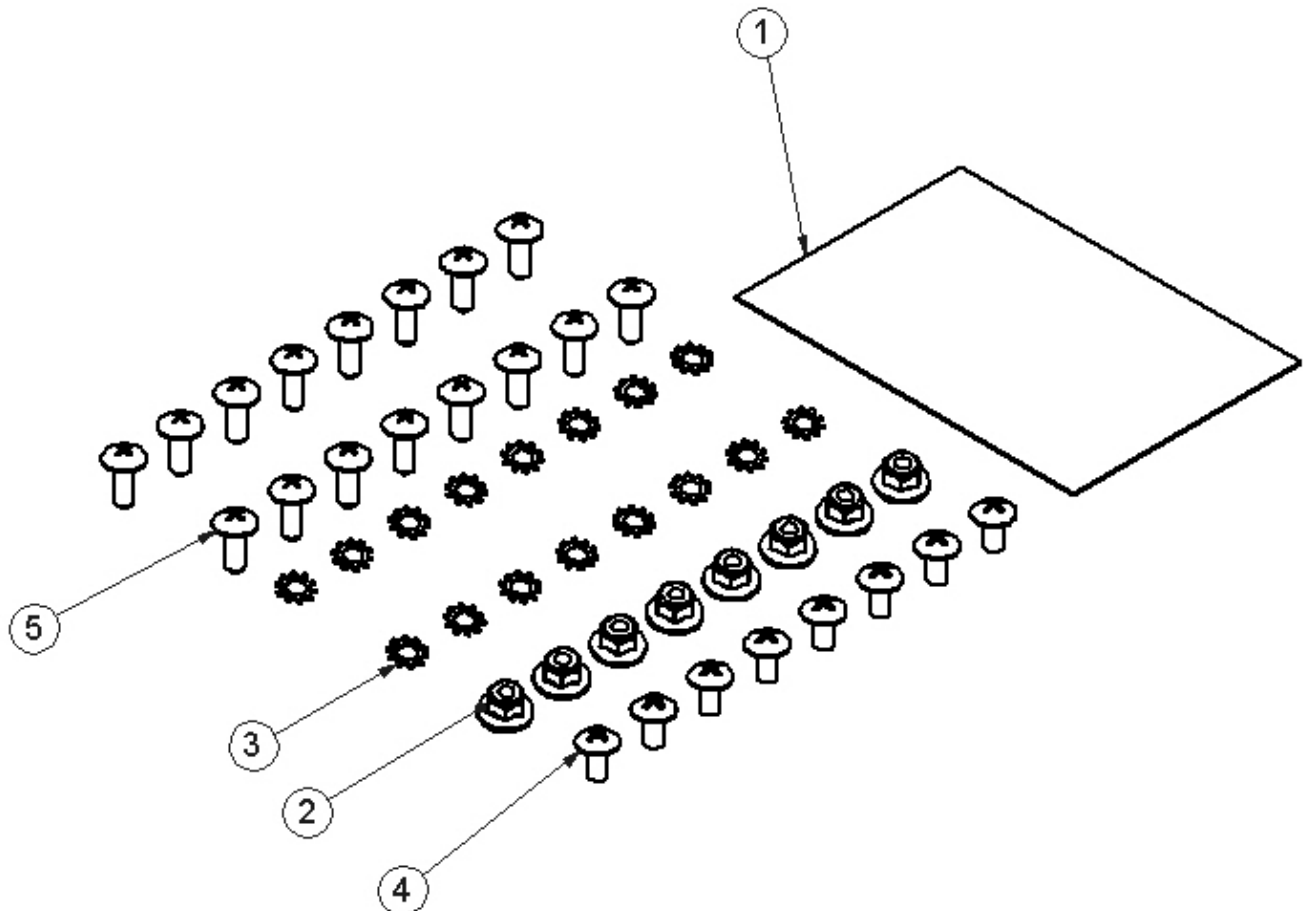
**CCDHF6 GRAY FILE HANGING BRKT KIT
CCDHF6-B BLACK FILE HANGING BRKT KIT**

ITEM NO.	PART NUMBER	DESCRIPTION	DDFE6HF-G/QTY.
1	CRT08309-W	Small Parts Carton	1
2	BAGMD610-0	BAG FOR FASTENERS FOR MD610	1
3	48136-G	FILE HANGING BRKT	2



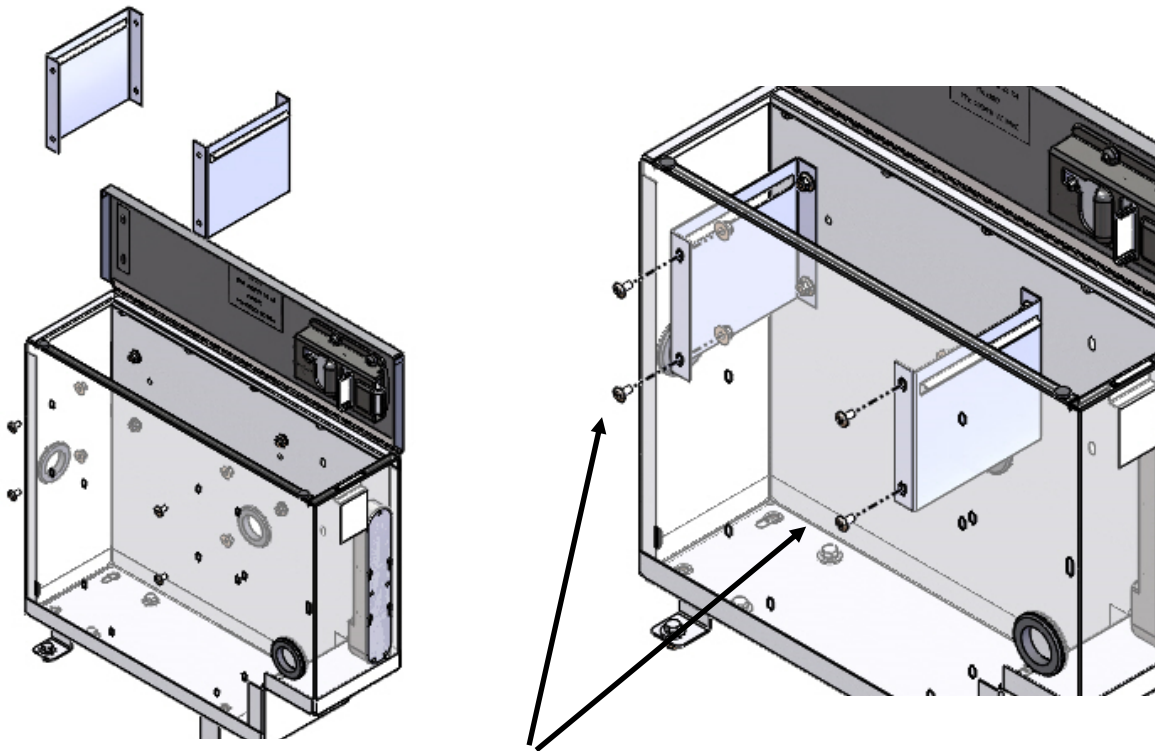
BAGMD610-0 BAG OF FASTENERS FOR MD610-0

ITEM NO.	PART NUMBER	DESCRIPTION	BAGMD610-0/QTY.
1	BAG0406-A	4" x 6" 3MIL AUTOBAG	1
2	FAS0055	Nut, Hex Flange, Nylock 1/4-20	8
3	FAS 0066	Washer, Lock, Ext. Tooth, 1/4	16
4	FAS0061	Screw, Truss Hd. Ph, 1/4-20x0.50	8
5	FAS0041	Screw, Truss Hd Phillips Tapping, # 14-10x0.75 (A)	16

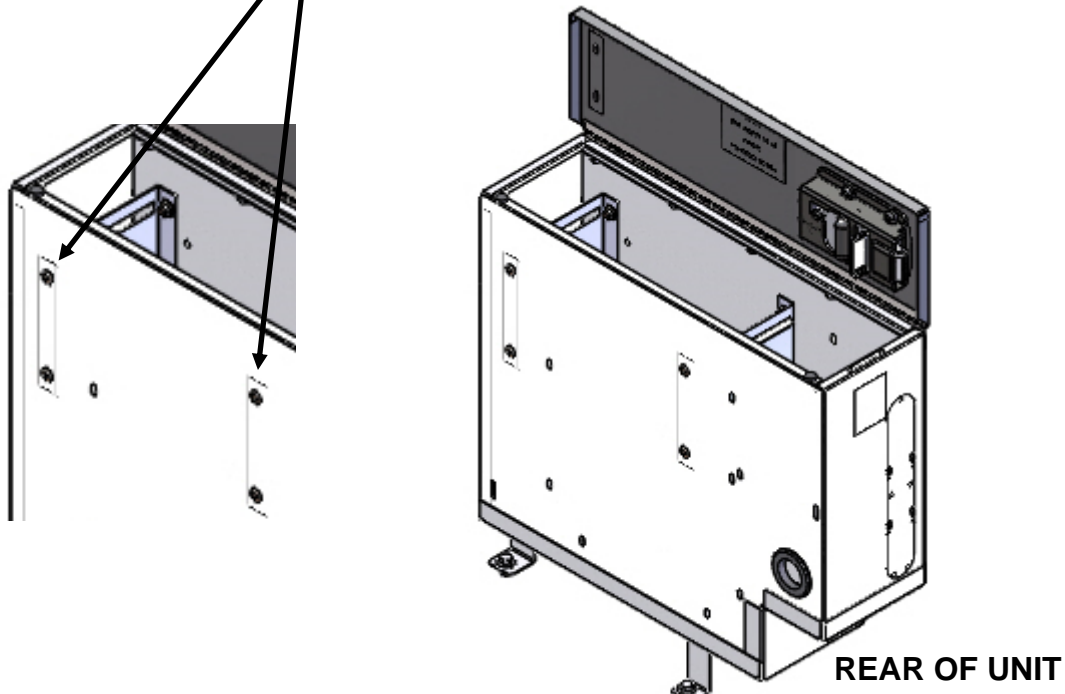


**ONLY 8 FAS0061, AND 8 FAS0055 FASTENERS ARE NEEDED.
DISCARD ALL UNUSED FASTENERS**

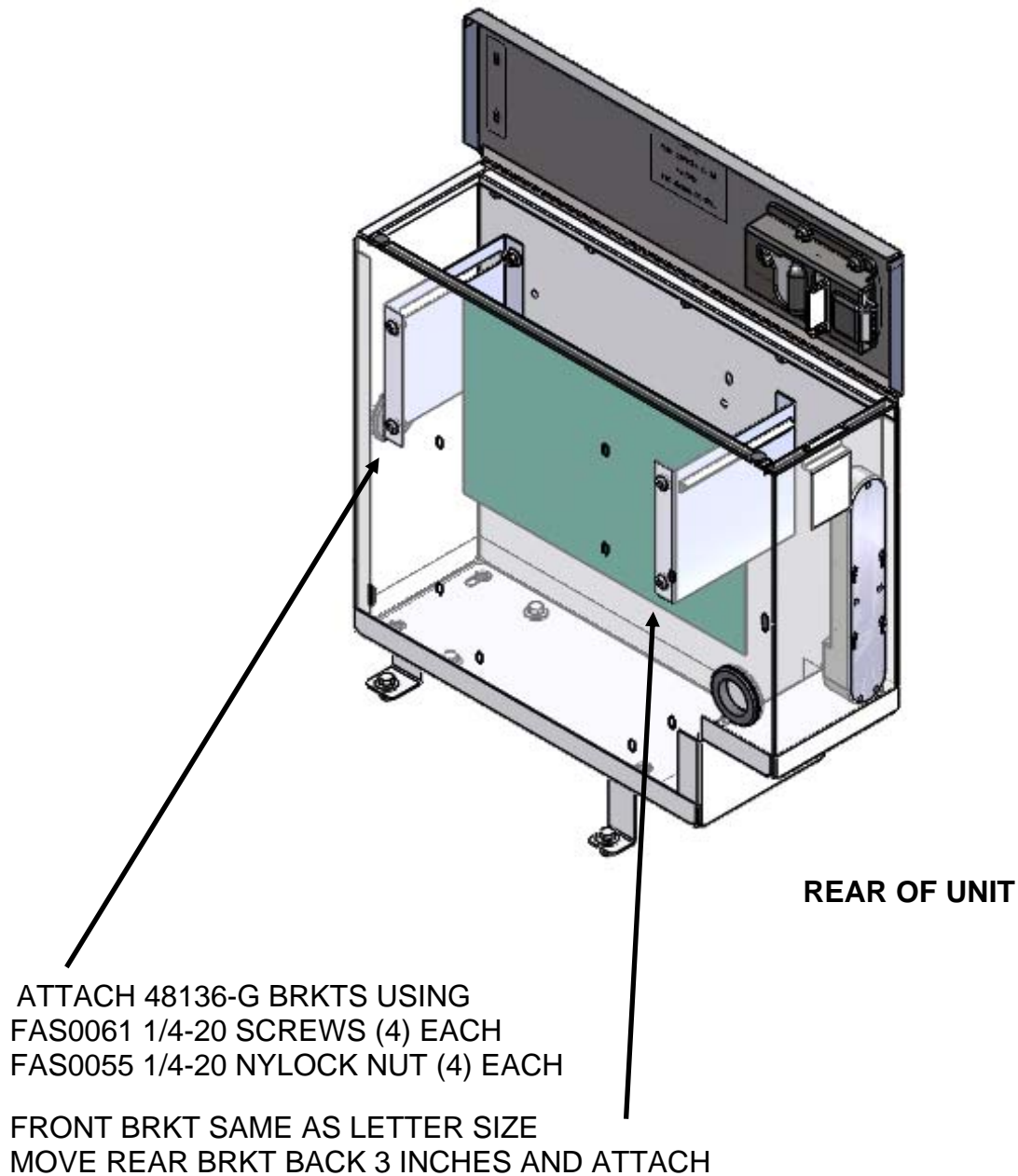
INSTALL (2) 48136-G FILE HANGING BRKTS AS SHOWN FOR LETTER SIZE FILES



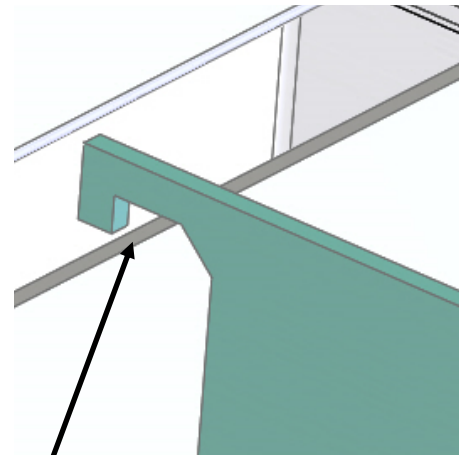
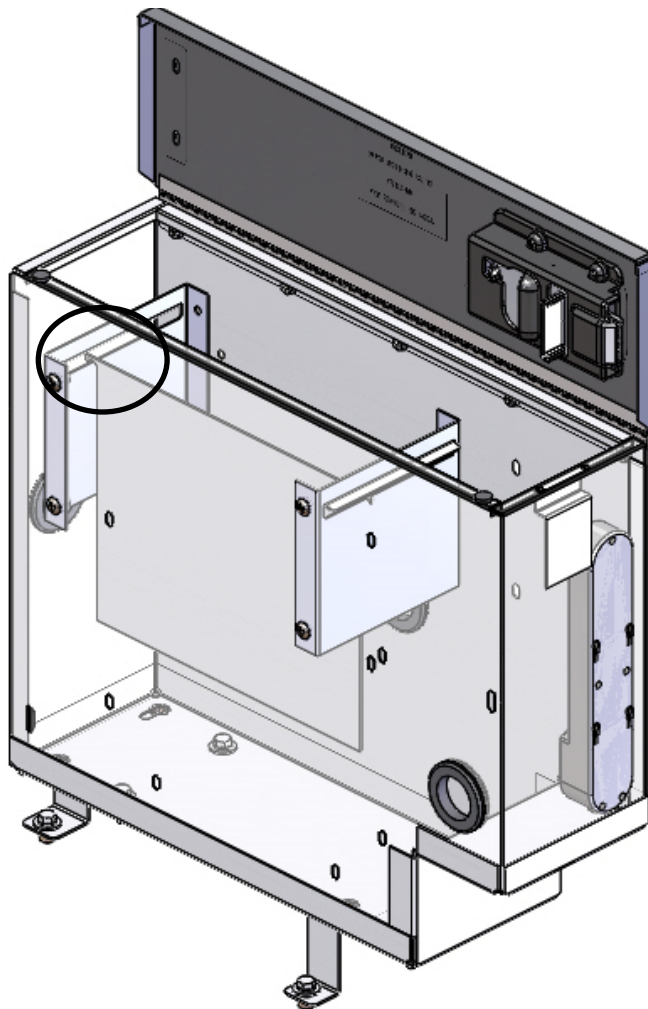
ATTACH 48136-G BRKTS USING
FAS0061 1/4-20 SCREWS (4) EACH
FAS0055 1/4-20 NYLOCK NUT (4) EACH



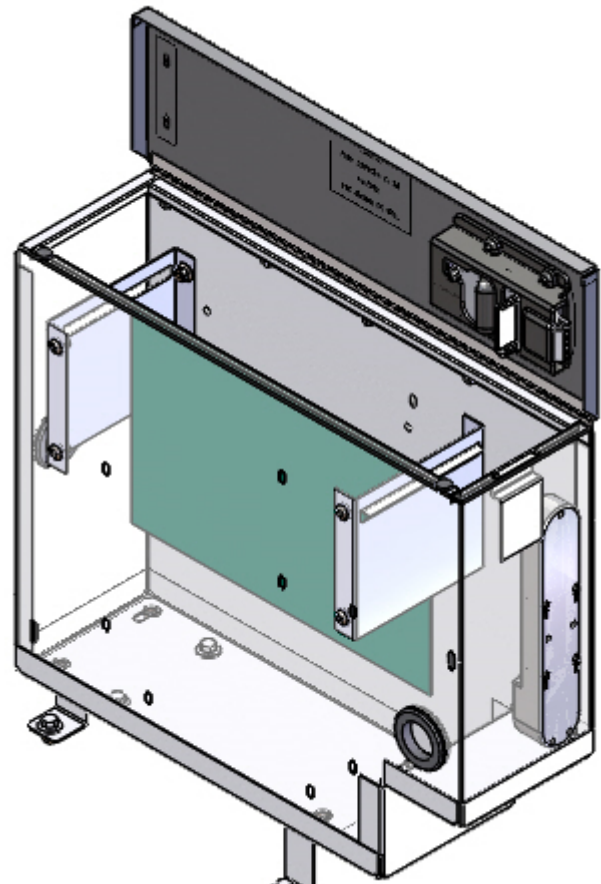
INSTALL (2) 48136-G FILE HANGING BRKTS AS SHOWN FOR LEGAL SIZE



YOUR INSTALLATION IS COMPLETE!



LOCATE FILE AS SHOWN



**DOUBLE CHECK ALL FASTENERS LOCATIONS TO BE SURE THAT ALL
FASTENERS ARE TIGHTENED TO SPECIFICATIONS.
YOUR INSTALLATION IS NOW COMPLETE!
STOW THIS COPY IN THE VEHICLE FOR FUTURE REFERENCES!**