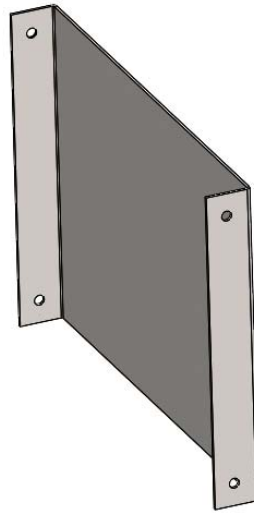
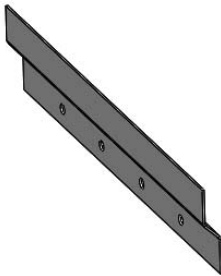


## CNT,CONSOL,HANG FILE, 10"



**PRODUCT WEIGHT**  
3.56 LBS

**WIDTH x DEPTH x HEIGHT**  
9.8" x 1" x 7"

**CAPACITY**

**COLOR**  
GRAY

**CATALOG NUMBER**  
CCDHF10

### **PRODUCT FEATURES**

**HANGING FILE KIT IS DESIGNED TO HOLD LEGAL AND LETTER SIZE HANGING FILES IN THE CCD10.**

**CAN BE USED WITH CCDLTH IF THE FILE HANGER IS INSTALLED IN THE LEGAL FILE SIZE.**

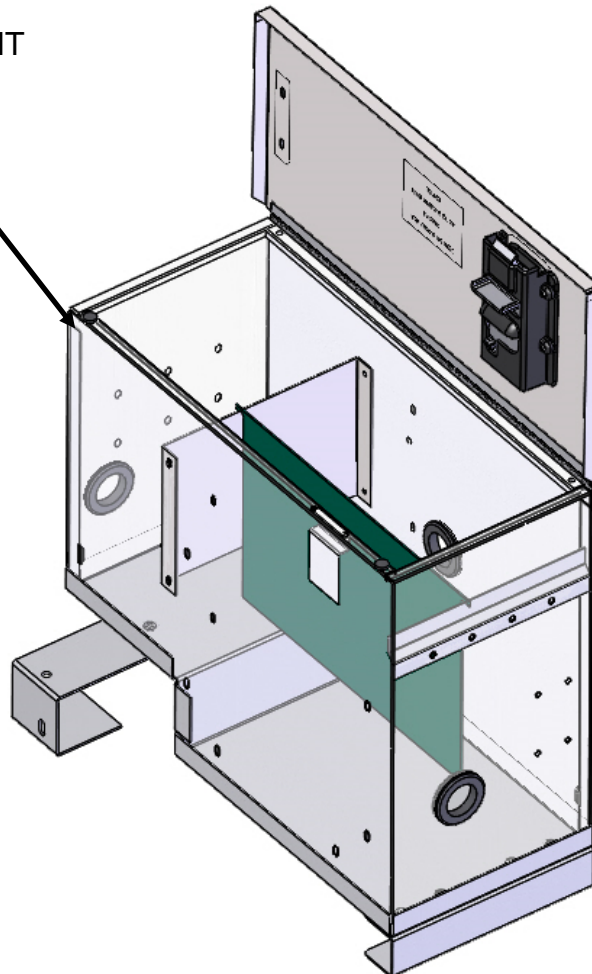
**Introduction / Comments:**

**CCDHF10 HANGING FILE BRKT KIT FOR CCD10,  
DESIGNED TO HOLD LETTER OR LEGAL FILES.**

**Note:**

It is advised that all fasteners used in this assembly and installation should be checked for tightness at the following intervals: @ 2-weeks and again @ 6-weeks of operation. This preventive maintenance step must be completed to ensure your Product gives you long service life.

SHOWN TRANSPARENT  
FOR CLARITY



**CCDHF10 HANGING FILE BRKT KIT FOR CCD10**

## - PRECAUTIONS -



**CAUTION**



**THE USE OF AIR IMPACT TOOLS CAN  
OVER-TORQUE FASTENERS AND  
CAUSE FASTENER FAILURE!**



**CAUTION**



**ALL INSTALLATION HOLES SHOULD BE SEALED  
WITH SILICON OR BUTYL SEALANT TO PREVENT  
EXHAUST FUMES FROM ENTERING THE VEHICLE!**



**DANGER**



**INSPECT FOR FUEL TANK, FUEL LINES, BRAKE LINES, HIGH  
VOLTAGE BATTERIES AND ELECTRICAL LINES PRIOR TO  
DRILLING TO AVOID DAMAGING CRITICAL VEHICLE SYSTEMS  
OR INJURY TO INSTALLER DURING INSTALLATION PROCESS!**



**CAUTION**



**TO AVOID DAMAGING THE VEHICLE ALWAYS USE DRILL  
STOPS WHEN DRILLING ANY INSTALLATION HOLES!  
ADRIAN AVAILABLE PART #'S 31121-0 (1/2" DEEP),  
31122-0 (3/4" DEEP)**



## - IMPORTANT WARRANTY REQUIREMENTS -

1. SUBSTITUTING ADRIAN STEEL SPECIFIED FASTENERS FOR ASSEMBLY AND/OR INSTALLATION WILL VOID YOUR PRODUCT WARRANTY.
2. ALL HOLES DRILLED INTO VEHICLE SHOULD HAVE THE RAW METAL EDGES SEALED WITH A SELF-ETCHING PRIMER TO RESIST CORROSION AND POTENTIAL FASTENER POINT FAILURE.
3. ALL FASTENERS USED IN THE INSTALLATION OF THIS PRODUCT SHOULD BE TIGHTENED TO THE TORQUE(S) SPECIFIED IN THESE INSTRUCTIONS.
4. THESE INSTRUCTIONS SHOULD BE KEPT WITH THE VEHICLE.

### THE BASIC TOOLS NEEDED FOR MOST INSTALLATIONS



DRILL



DRILL BIT WITH  
STOP



RATCHET, SOCKETS  
AND/OR WRENCHES



SCREWDRIVERS



MEASURING TAPE

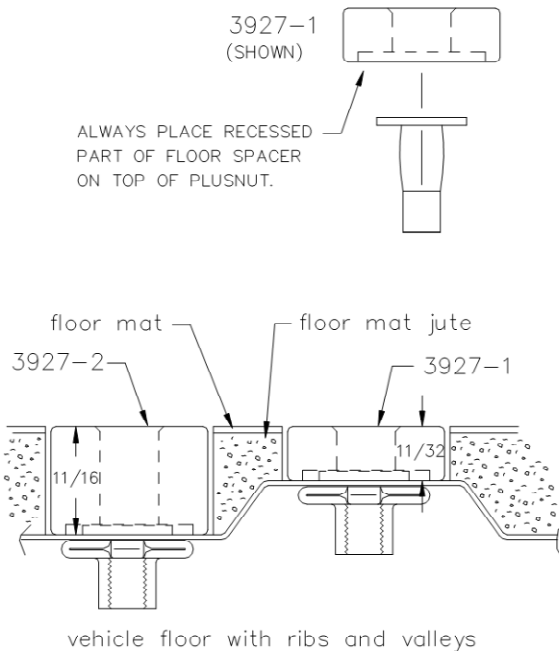
ADDITIONAL TOOLS MAY BE NEEDED FOR THIS INSTALLATION AND THEY WILL BE IDENTIFIED IN THE STEPS THAT FOLLOW.

If your vehicle contains carpet or a rubber floor mat you will need to prepare the mounting location. Position the product to be installed into the vehicle and once you are satisfied with the mounting locations, mark the mounting locations. Using a 1-3/16" diameter carpet cutter (P/N: 31183-0). Select the appropriate floor spacers as shown in the illustration. Set those aside for use later into the installation process.

Using the correct drill bit size for the selected plusnut, drill the mounting holes in the vehicle sheet metal to prepare for installing the plusnuts.

If you are thru-bolting at any of the locations simply drill a hole that is 1/16" larger than the bolt size(s) for those locations.

Once you have drilled the holes into the vehicle, the raw metal edges should be sealed using a self-etching primer to resist corrosion and potential fastener point failure.



A PLUSNUT (RIVNUT) SETTING TOOL IS REQUIRED FOR PLUSNUT (RIVNUT) INSTALLATION AND IS SUPPLIED WITH THIS KIT. OR USE AN AIR POWERED PLUSNUT SETTING GUN.

1/4-20UNC Plusnut (FAS0052) Use 3/8" dia. drill w/stop

FAS0080 SCREW, HXHD, 1/4-20UNCx2.00", G8

FAS0067 WASHER, FLAT, 1/4"ID

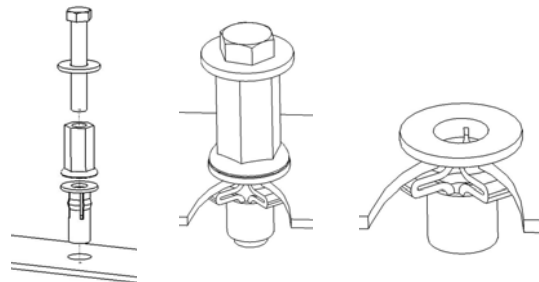
22200-0 PLUSNUT TOOL

5/16-18UNC Plusnut (FAS0091) Use 1/2" dia. drill w/stop

FAS0095 SCREW, HXHD, 5/16-18UNCx2.00", G8

FAS0086 WASHER, FLAT, 5/16"ID

22200-0 PLUSNUT TOOL

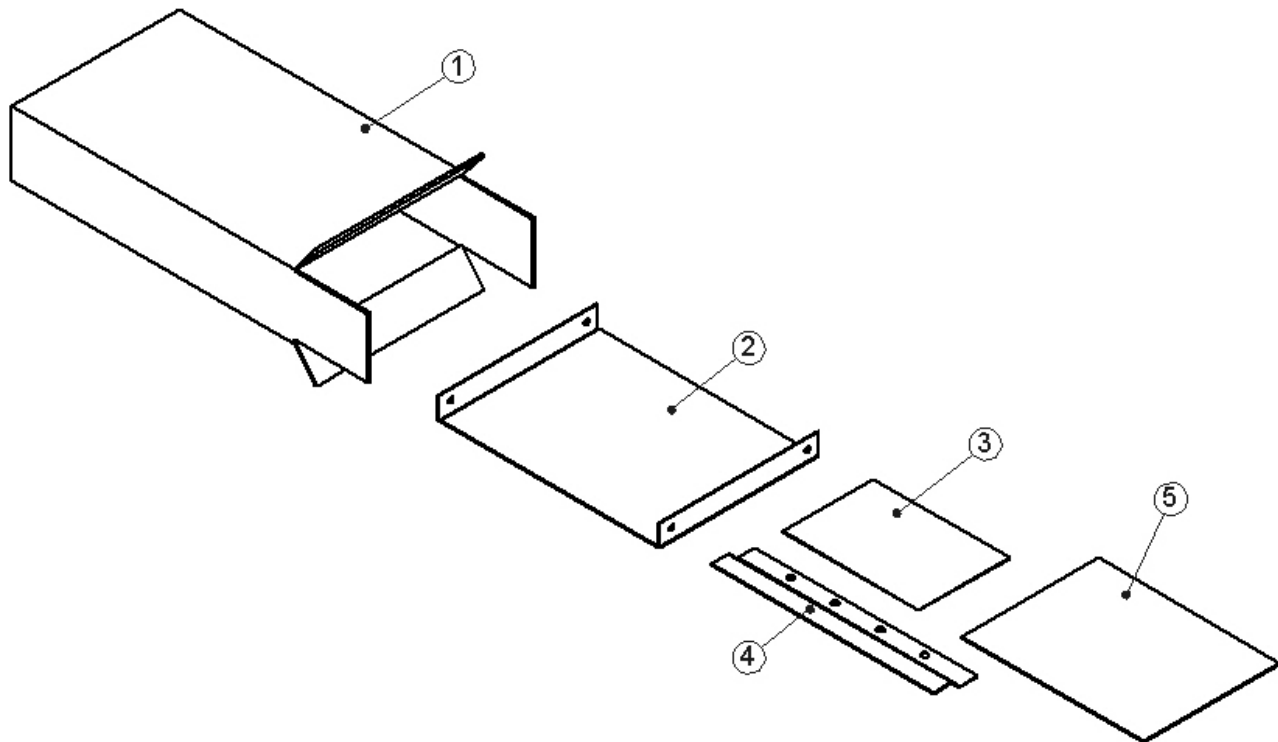


Place barrel of the plusnut body in sheet metal thru hole until flange is flush with sheet metal.

Using a 9/16" combination wrench of plusnut tool body and a second hand wrench, ratchet, or air tool, rotate the hex bolt head CW to draw plus nut flanges up (set the plusnut).

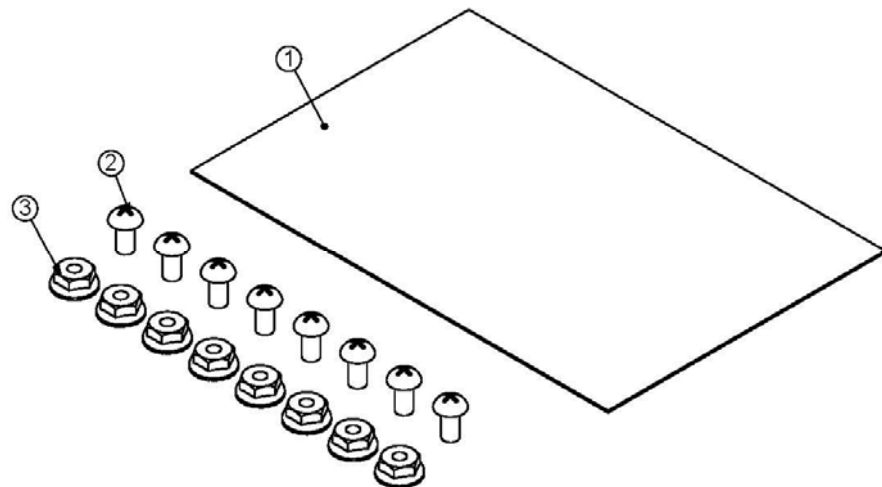
**CCDHF10 FILE HANGING BRKT KIT**

ITEM NO.	PART NUMBER	DESCRIPTION	QTY.
1	CRT25386-1	HARDWARE BOX FOR CCD	1
2	45817-G	CENTER FILE SUPPORT, CCD10	1
3	BAG50036	BAG FOR CCD FILE HANGER	1
4	50004-G	FILE DEFLECTOR 10"	1
5	50055	INSTALL INSTRUCTIONS CCDHF10	1

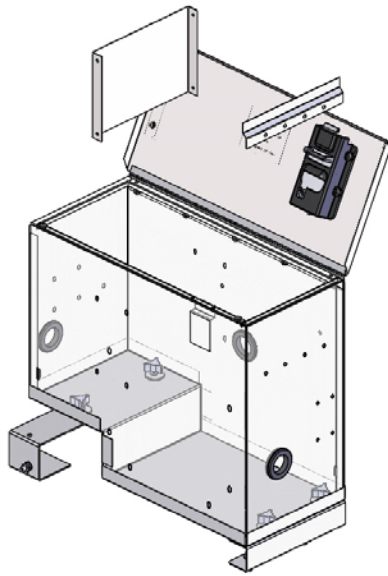


**BAG50036 BAG FOR CCD FILE HOLDER**

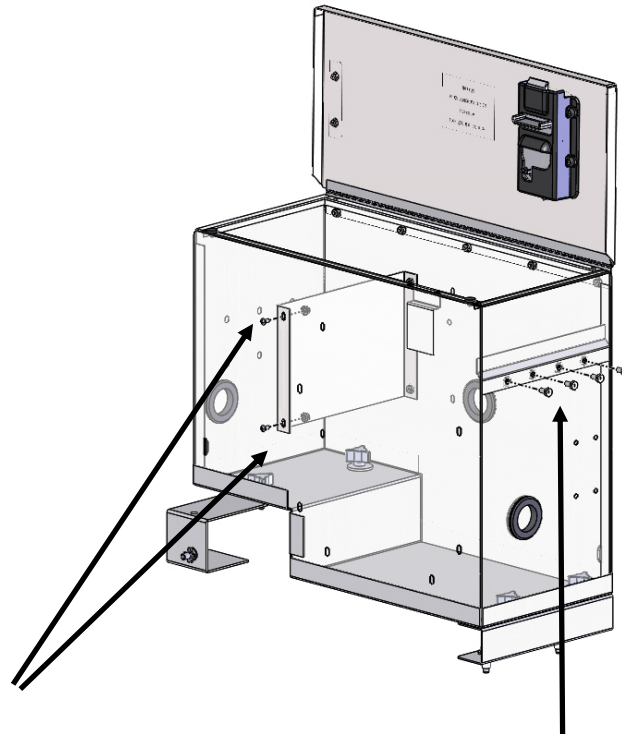
ITEM NO.	PART NUMBER	DESCRIPTION	BAG50036/QTY.
1	BAG0406-A	4" x 6" 3MIL AUTOBAG	1
2	FAS0030	Screw, Round Phillips Head, #10-24x0.375	8
3	FAS0020	Nut, Hex Flange, #10-24	8



**INSTALL (1) 45817-G AND (1) 50004-G FILE HANGING BRKTS AS SHOWN**



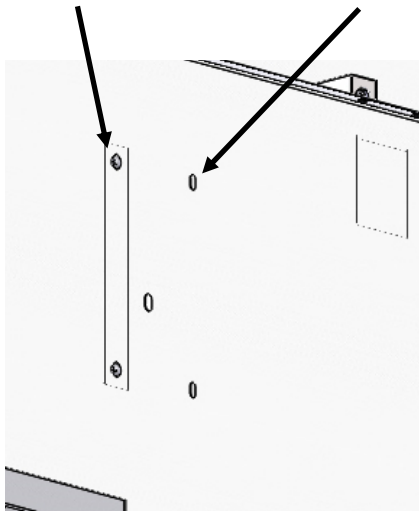
ATTACH 45817-G USING  
(4) FAS0030 AND (4) FAS0020



ATTACH 50004-G USING  
(4) FAS0030 AND (4) FAS0020

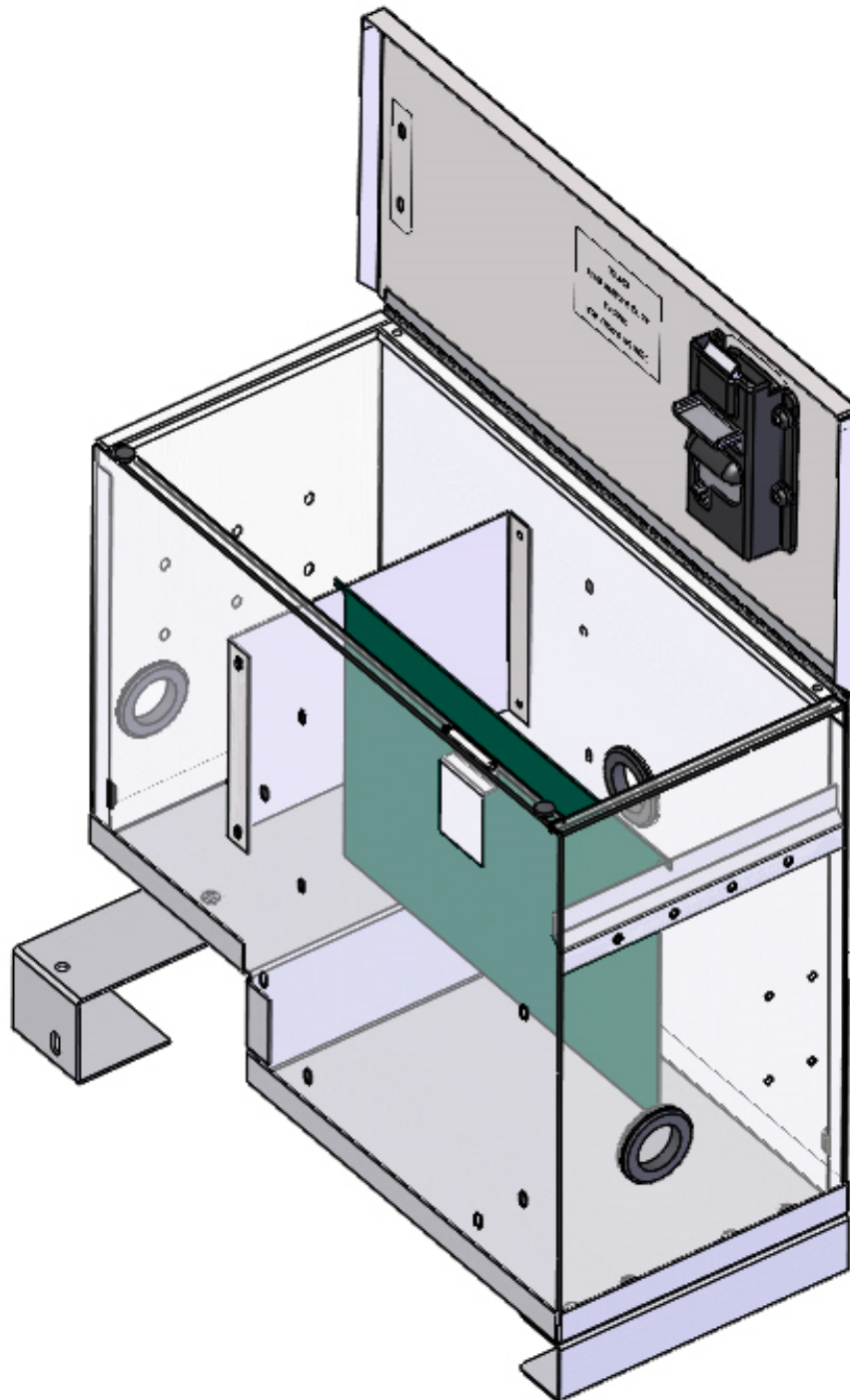
FOR LEGAL SIZE  
FILE ATTACH HERE

FOR LETTER SIZE  
FILE ATTACH HERE



**REAR OF UNIT**

**YOUR INSTALLATION IS COMPLETE!**



**DOUBLE CHECK ALL FASTENERS LOCATIONS TO BE SURE THAT ALL  
FASTENERS ARE TIGHTENED TO SPECIFICATIONS.  
YOUR INSTALLATION IS NOW COMPLETE!  
STOW THIS COPY IN THE VEHICLE FOR FUTURE REFERENCES!**