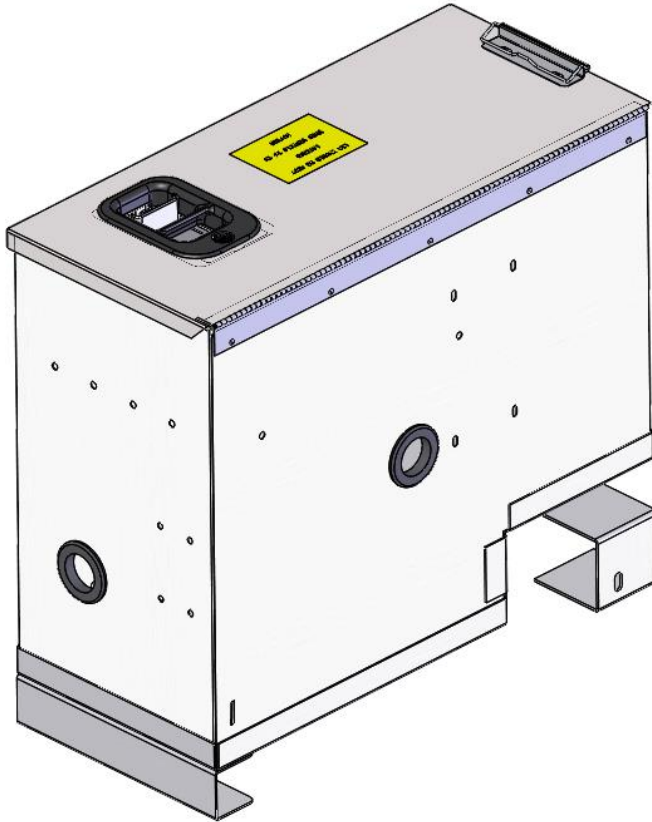


**ADRIAN STEEL®**

Cargo Management Solutions for Commercial Vehicles

## CCD10 CENTER CONSOLE DESK

**PRODUCT WEIGHT****40 lbs.****WIDTH x DEPTH x HEIGHT****10.25 x 22.38 x 20.38****COLOR****GRAY****CATALOG NUMBER****CCD10**

### **PRODUCT FEATURES**

**Driver data file designed to be used in a 2014 and newer Dodge Promaster. It is designed to be used with optional powerstrip, PA9, hanging file kit CCD10, and laptop holder CCDLTH.**

**NOTE: This center console will only work with base seats. It will NOT work with Suspension or Swivel seat options.**

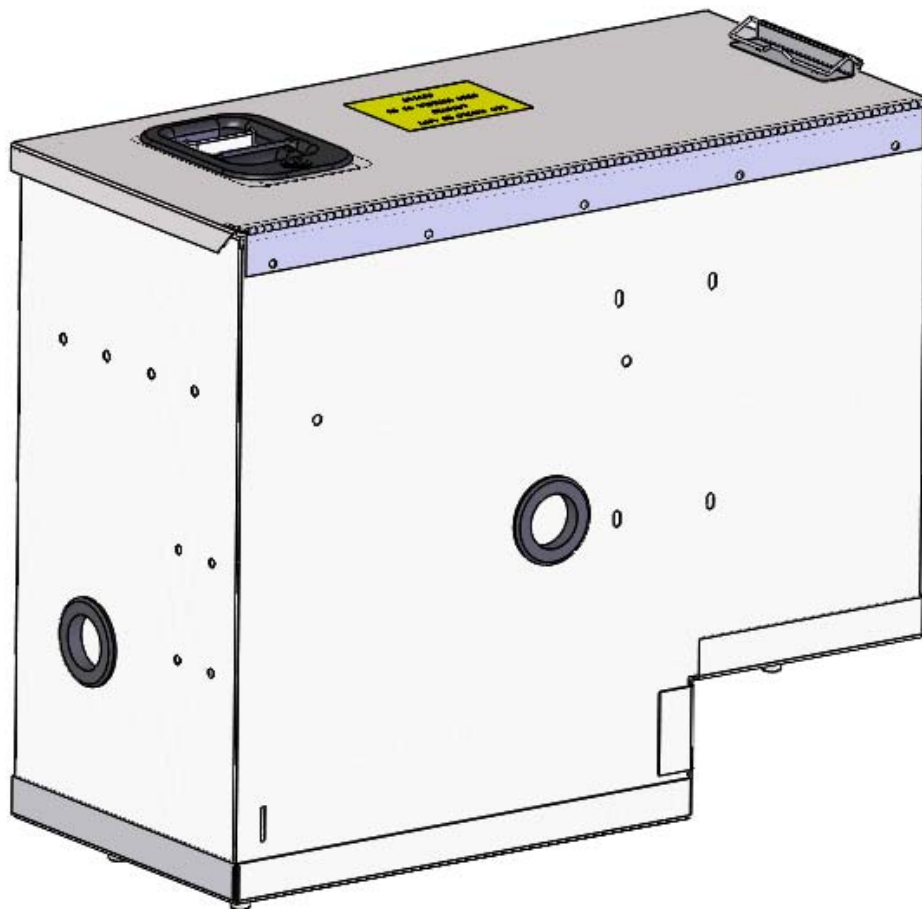
### **PAGE 1 of 1**

The information contained in this document is the sole property of ADRIAN STEEL COMPANY. ADRIAN STEEL COMPANY retains the right to modify and/or change the product of its design at any time without prior notification.

**Introduction / Comments:**

**This Center Console Desk is designed for storage of chargers, power strip, CCDHF10, CCDLTH, AND PA9.**

**Note:** It is advised that all fasteners used in this assembly and installation should be checked for tightness at the following intervals: @ 2-weeks and again @ 6-weeks of operation. This preventive maintenance step must be completed to ensure your Product gives you long service life.



**CENTER CONSOLE DESK FOR MISC USE.**

## - PRECAUTIONS -



**CAUTION**



**THE USE OF AIR IMPACT TOOLS CAN  
OVER-TORQUE FASTENERS AND  
CAUSE FASTENER FAILURE!**



**CAUTION**



**ALL INSTALLATION HOLES SHOULD BE SEALED  
WITH SILICON OR BUTYL SEALANT TO PREVENT  
EXHAUST FUMES FROM ENTERING THE VEHICLE!**



**DANGER**



**INSPECT FOR FUEL TANK, FUEL LINES, BRAKE LINES, HIGH  
VOLTAGE BATTERIES AND ELECTRICAL LINES PRIOR TO  
DRILLING TO AVOID DAMAGING CRITICAL VEHICLE SYSTEMS  
OR INJURY TO INSTALLER DURING INSTALLATION PROCESS!**



**CAUTION**



**TO AVOID DAMAGING THE VEHICLE ALWAYS  
USE DRILL STOPS WHEN DRILLING ANY IN-  
STALLATION HOLES!**



## - IMPORTANT WARRANTY REQUIREMENTS -

1. SUBSTITUTING ADRIAN STEEL SPECIFIED FASTENERS FOR ASSEMBLY AND/OR INSTALLATION WILL VOID YOUR PRODUCT WARRANTY.
2. ALL HOLES DRILLED INTO VEHICLE SHOULD HAVE THE RAW METAL EDGES SEALED WITH A SELF-ETCHING PRIMER TO RESIST CORROSION AND POTENTIAL FASTENER POINT FAILURE.
3. ALL FASTENERS USED IN THE INSTALLATION OF THIS PRODUCT SHOULD BE TIGHTENED TO THE TORQUE(S) SPECIFIED IN THESE INSTRUCTIONS.
4. THESE INSTRUCTIONS SHOULD BE KEPT WITH THE VEHICLE.

### THE BASIC TOOLS NEEDED FOR MOST INSTALLATIONS



DRILL



DRILL BIT WITH  
STOP



RATCHET, SOCKETS  
AND/OR WRENCHES



SCREWDRIVERS



MEASURING TAPE

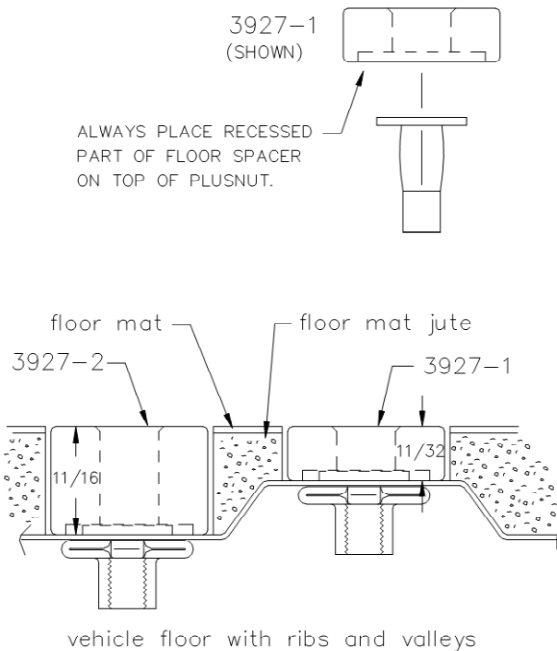
ADDITIONAL TOOLS MAY BE NEEDED FOR THIS INSTALLATION AND THEY WILL BE IDENTIFIED IN THE STEPS THAT FOLLOW.

If your vehicle contains carpet or a rubber floor mat you will need to prepare the mounting location. Position the product to be installed into the vehicle and once you are satisfied with the mounting locations, mark the mounting locations. Using a 1-3/16" diameter carpet cutter (P/N: 31183-0). Select the appropriate floor spacers as shown in the illustration. Set those aside for use later into the installation process.

Using the correct drill bit size for the selected plusnut, drill the mounting holes in the vehicle sheet metal to prepare for installing the plusnuts.

If you are thru-bolting at any of the locations simply drill a hole that is 1/16" larger than the bolt size(s) for those locations.

Once you have drilled the holes into the vehicle, the raw metal edges should be sealed using a self-etching primer to resist corrosion and potential fastener point failure.



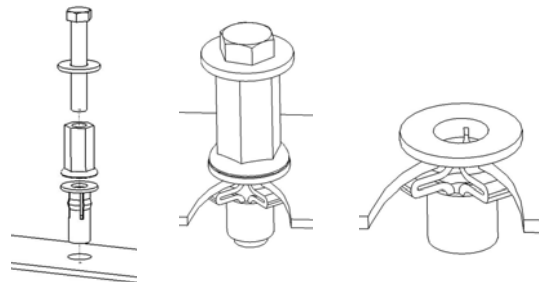
A PLUSNUT (RIVNUT) SETTING TOOL IS REQUIRED FOR PLUSNUT (RIVNUT) INSTALLATION AND IS SUPPLIED WITH THIS KIT. OR USE AN AIR POWERED PLUSNUT SETTING GUN.

1/4-20UNC Plusnut (FAS0052) Use 3/8" dia. drill w/stop

FAS0080 SCREW, HXHD, 1/4-20UNCx2.00", G8  
FAS0067 WASHER, FLAT, 1/4"ID  
22200-0 PLUSNUT TOOL

5/16-18UNC Plusnut (FAS0091) Use 1/2" dia. drill w/stop

FAS0095 SCREW, HXHD, 5/16-18UNCx2.00", G8  
FAS0086 WASHER, FLAT, 5/16"ID  
22200-0 PLUSNUT TOOL

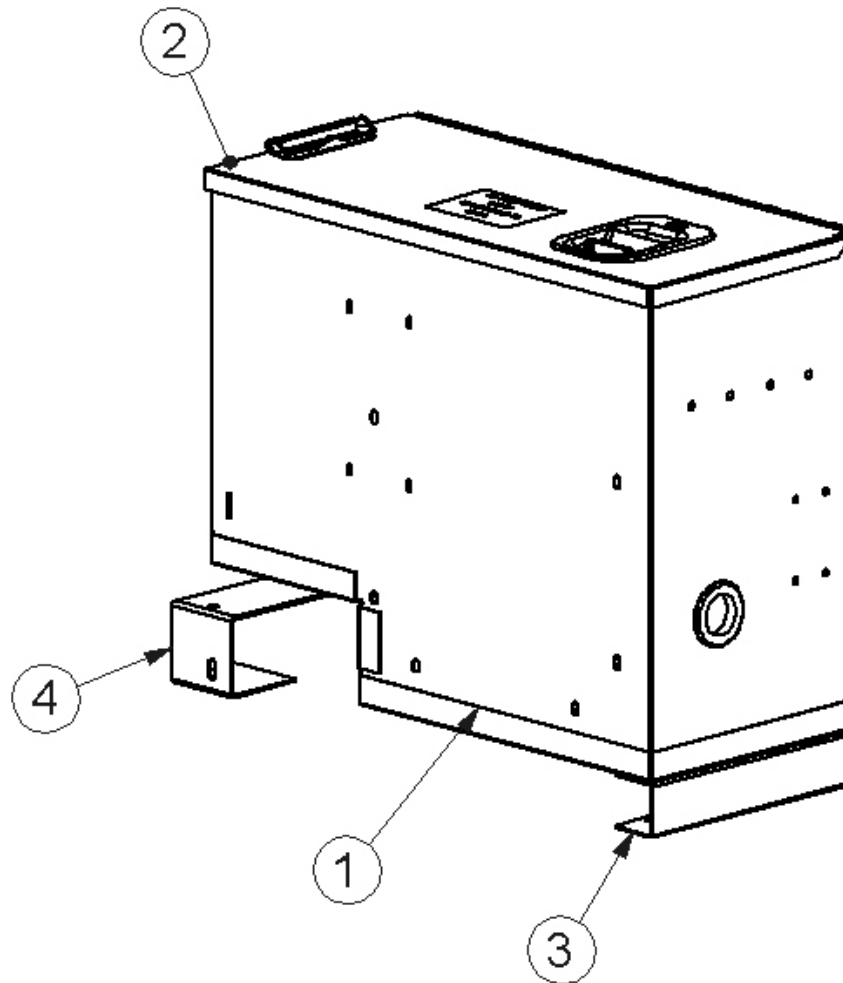


Place barrel of the plusnut body in sheet metal thru hole until flange is flush with sheet metal.

Using a 9/16" combination wrench of plusnut tool body and a second hand wrench, ratchet, or air tool, rotate the hex bolt head CW to draw plus nut flanges up (set the plusnut).

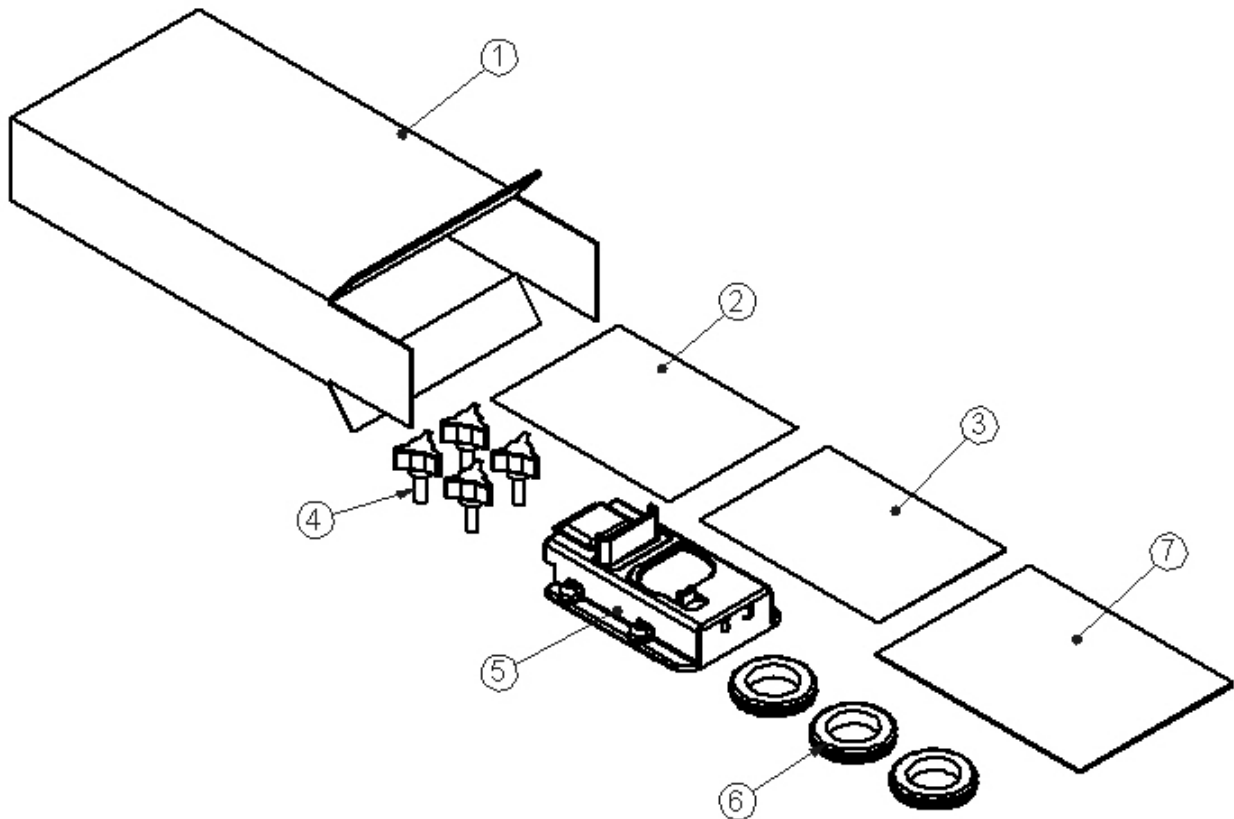
## CCD10 CENTER CONSOLE DESK FOR PROMASTER

ITEM NO.	PART NUMBER	DESCRIPTION	QTY.
1	50039-G	PAINTED BODY , CCD10	1
2	45833-G	LID , CCD10	1
3	45690-G	REAR MNTG BRKT ASS'Y	1
4	45693-G	FRONT MNTG BRKT ASS'Y.	1
5	HDWCCD10	HARDWARE KIT FOR CCD10	1



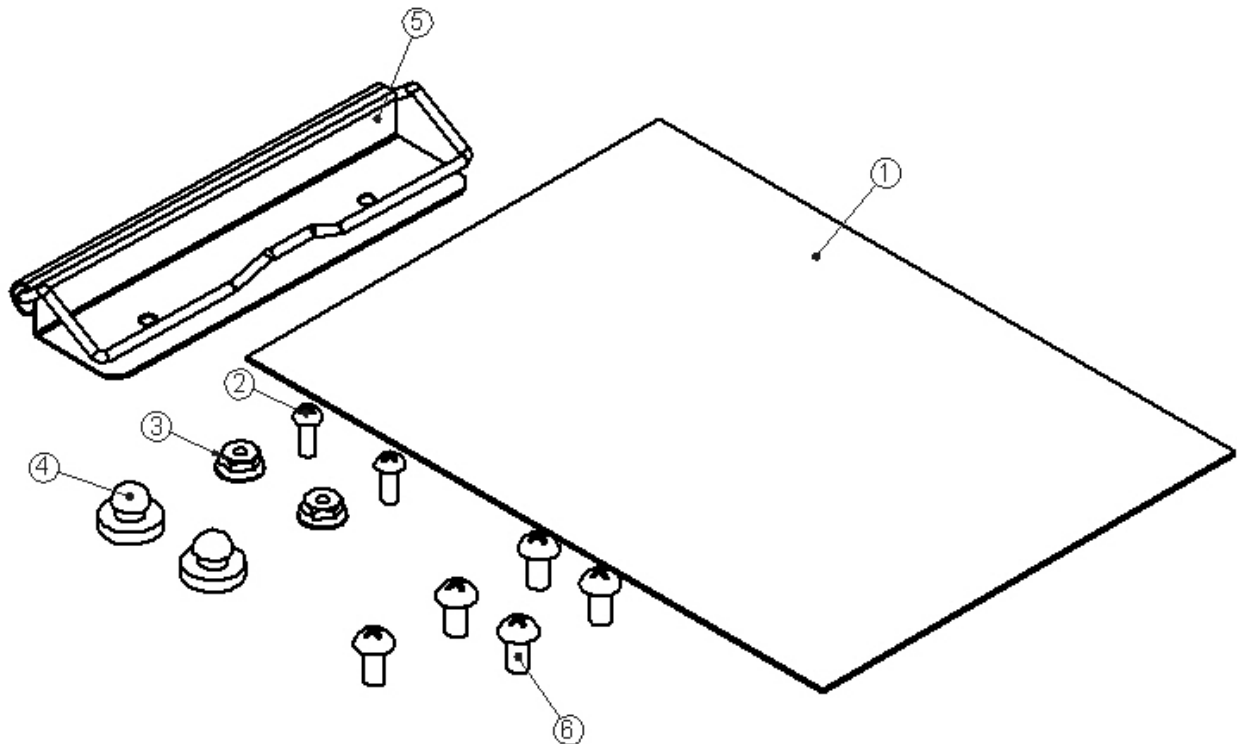
## HDWCCD10 CCD10 HARD WARE KIT

ITEM NO.	PART NUMBER	DESCRIPTION	HDWCCD10/QTY.
1	CRT25386-1	HARDWARE BOX FOR CCD	1
2	BAG50038	FASTENER BAG FOR CCD10	1
3	HDW50050	HARDWARE BAG FOR CCD10 AND CCD12	1
4	FAS0760	KNOB 5/16-18 X 1	4
5	35295-B	MOLDED SLAM LATCH W/ LOCK	1
6	44388	GROMMET,RUBBER, 1.5" ID	3
7	50037	ASM INSTRUCTION CCD10	1



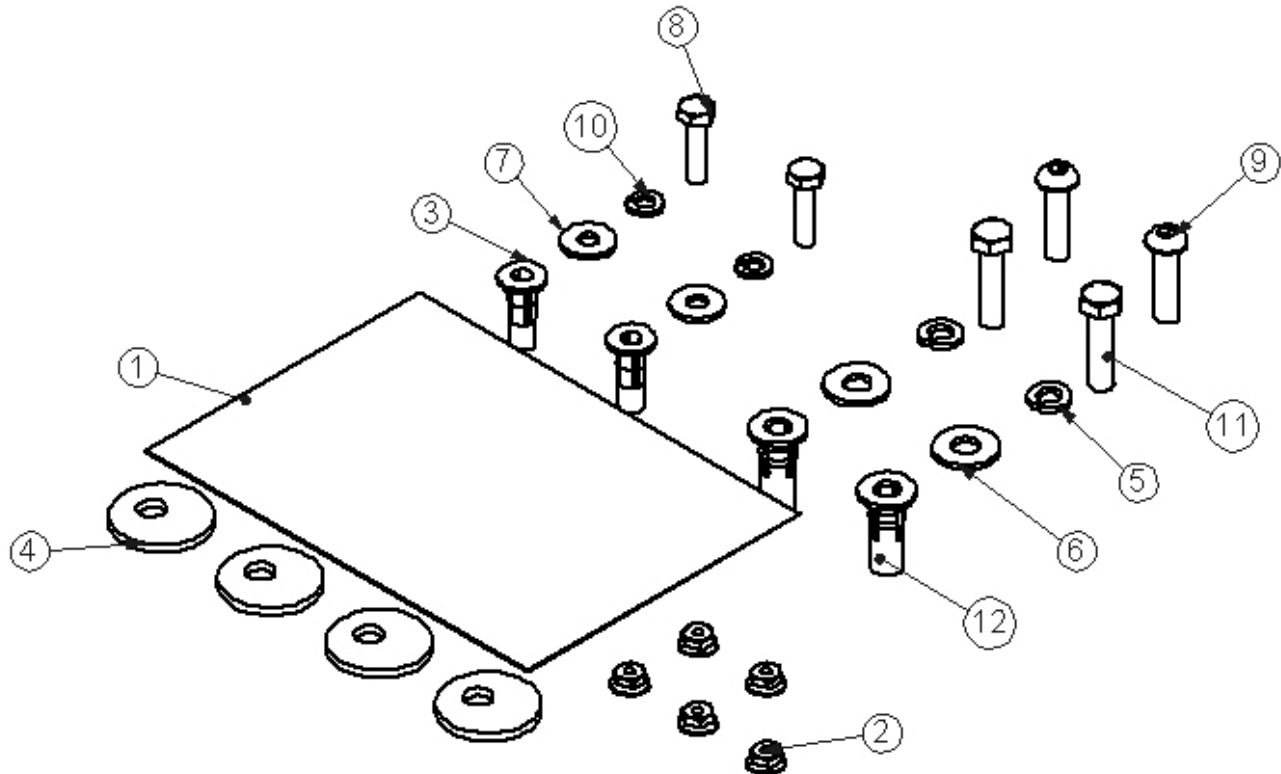
## HDW50050 HARDWARE BAG FOR CCD10 & CCD12

ITEM NO.	PART NUMBER	DESCRIPTION	QTY.
1	BAG0507-A	5" x 7" 3MIL AUTOBAG	1
2	FAS0137	Screw, Round Phillips Head, #6-32x0.375, Zinc plate	2
3	FAS0138	Nut, Hex Flange, #6-32, Zinc Plate	2
4	34341-0	9309K16 MCMASTER CARR BUMPER	2
5	25384-0	SPRING CLIP, CCD	1
6	FAS0030	Screw, Round Phillips Head, #10-24x0.375	5



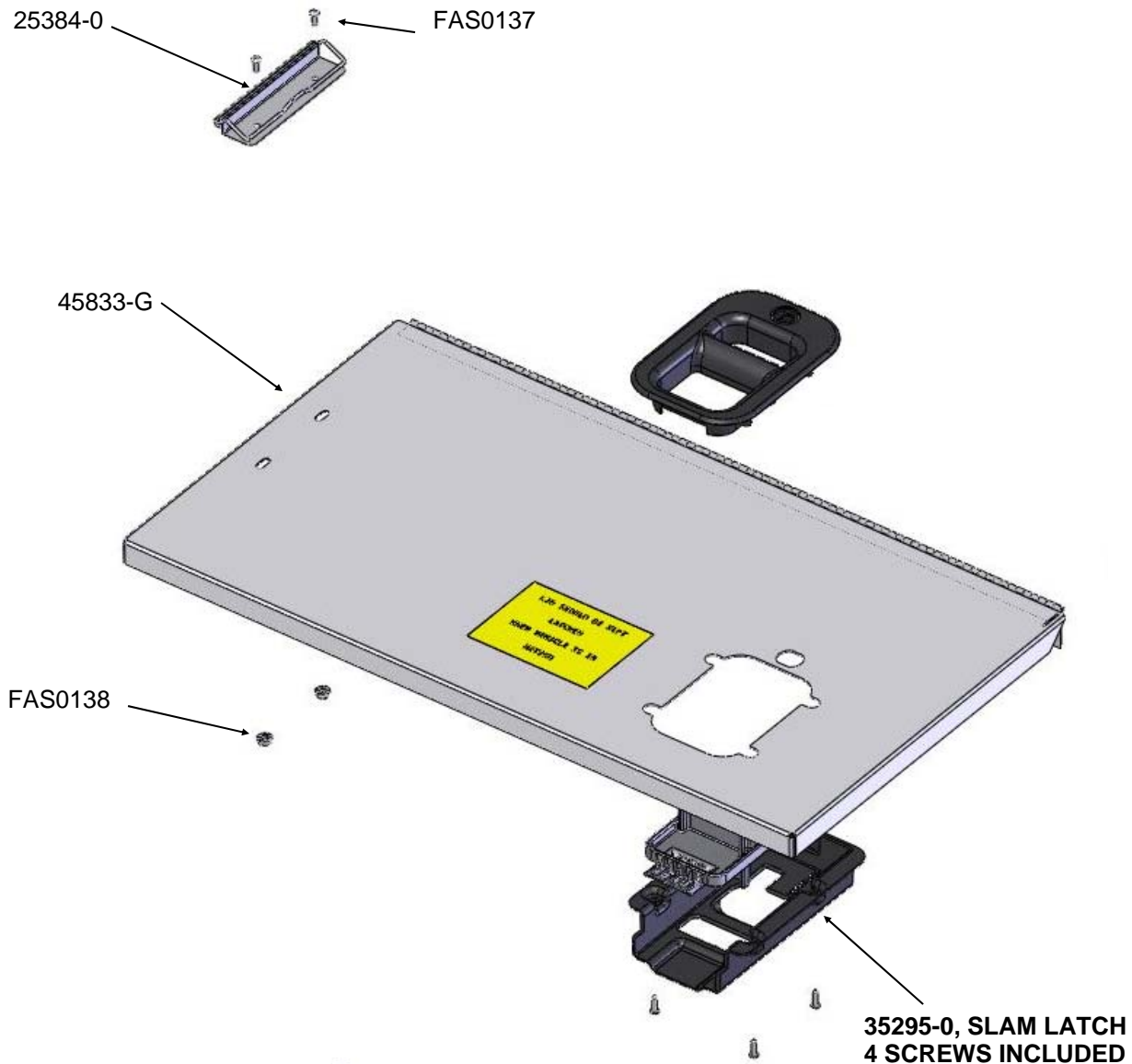
## BAG50038 FASTENER BAG FOR CCD10

ITEM NO.	PART NUMBER	DESCRIPTION	BAG50038/QTY.
1	BAG0507-A	5" x 7" 3MIL AUTOBAG	1
2	FAS0020	Nut, Hex Flange, #10-24	5
3	FAS0052	Plusnut, 1/4	2
4	21166-0	ECCENTRIC WASHER	4
5	FAS0098	Washer, Lock, Split, 5/16, Zinc Plate	2
6	FAS0112	Washer, Flat, 5/16, NIZN	2
7	FAS0067	Washer, Flat, 1/4	2
8	FAS0078	Screw, Hex Hd, 1/4-20x1.00 Zn Plate, Grade 8	2
9	FAS0727	Screw, Button Hd Hex Soc, M8-1.25 X 30	2
10	FAS0060	Washer, Lock, Split, 1/4	2
11	FAS0587	Screw, Hex Hd, 5/16-18x1.25, Zn-Ni (1000 hour), Grade 5	2
12	FAS0091	Plusnut, 5/16	2





## LID ASSEMBLY INSTALL 45833-G

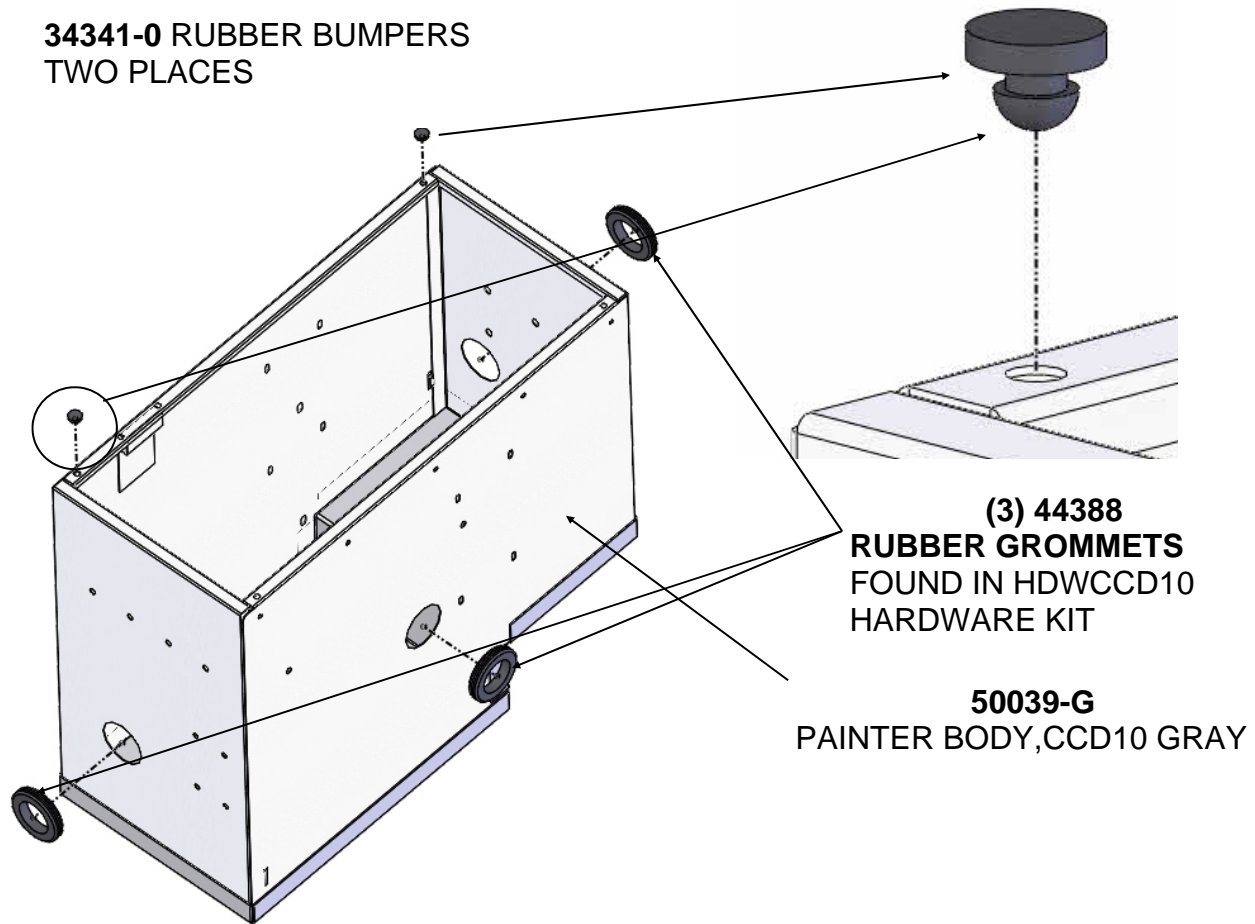


There are 2 versions of the Lock,  
One snaps into Slam Latch, the alternate is  
held to Slam Latch by a Hex Nut (included  
with Lock) on backside.

Lock Cam orientation shown is in the locked  
position. Unlocked position is 90 degrees  
Counterclockwise from position shown.  
Flats on Cylinder run perpendicular to Cam  
in locked position (shown). Install in position  
shown.

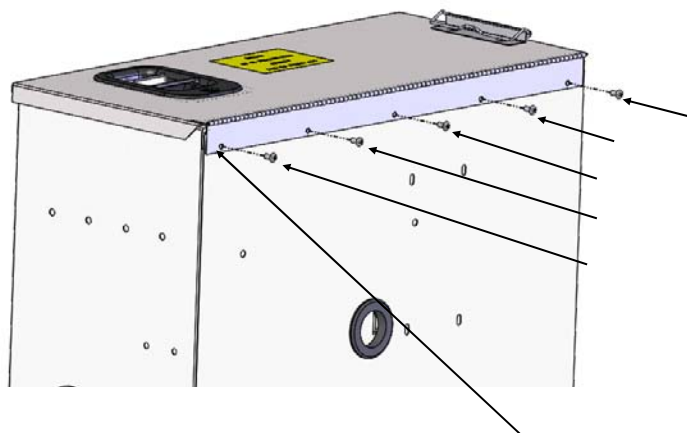
## INSTALL CENTER FILE SUPPORT ASS'Y. BUMPERS AND GROMMETS

**34341-0 RUBBER BUMPERS**  
TWO PLACES



**PRIOR TO INSTALLING LID, INSTALL ANY ACCESSORIES INSIDE CCD WITH INSTRUCTIONS SUPPLIED WITH ACCESSORIES.**

### INSTALL LID ASSEMBLY 45833-G TO 50039-G PAINTED BODY

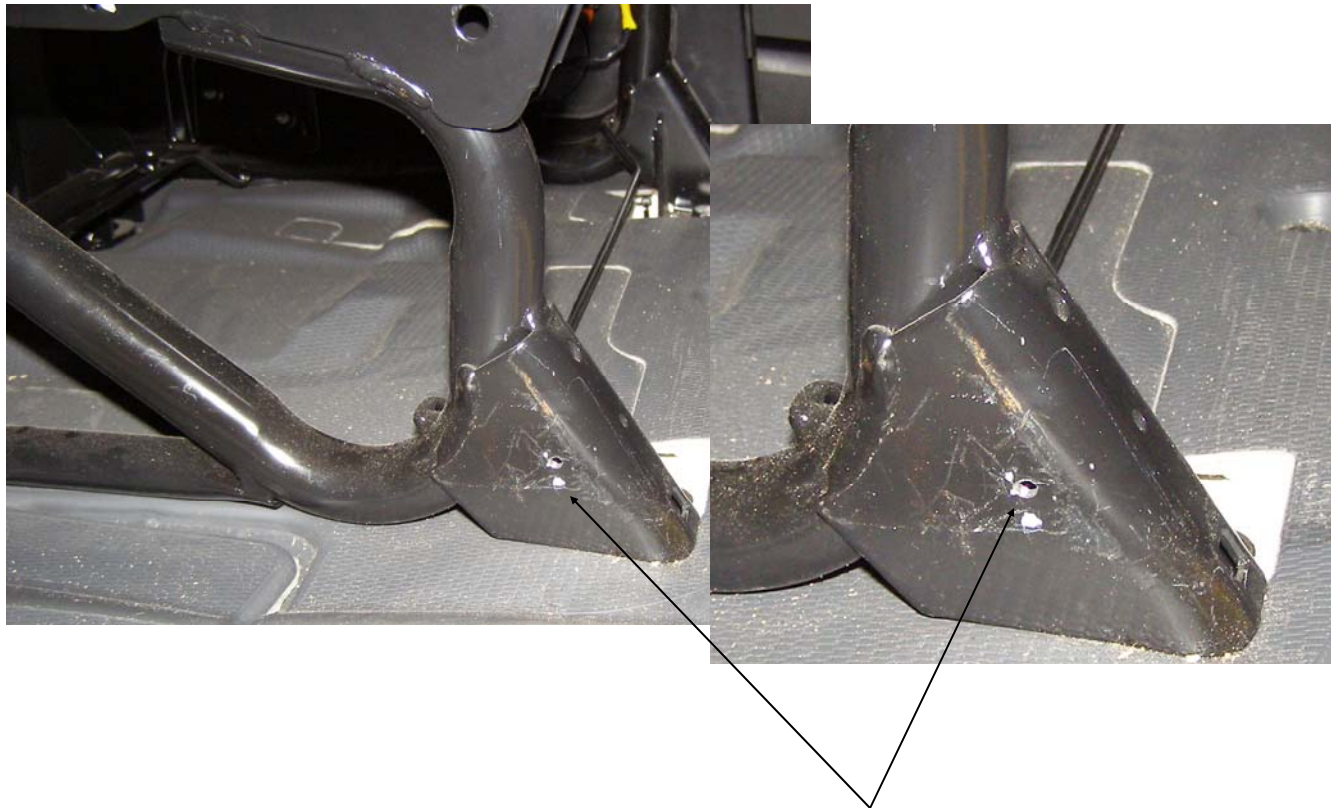


INSTALL (5) FAS0020 #10-24 FLANGE NUT,  
AND (5) FAS0030 #10-24X3/8" PH SCREWS.  
THRU LID ASSEMBLY AND BODY

## REMOVE SEAT TRIM AND INSTALL FAS0052 1/4" PLUSNUT IN FRONT SEAT LOWER BRACKETS

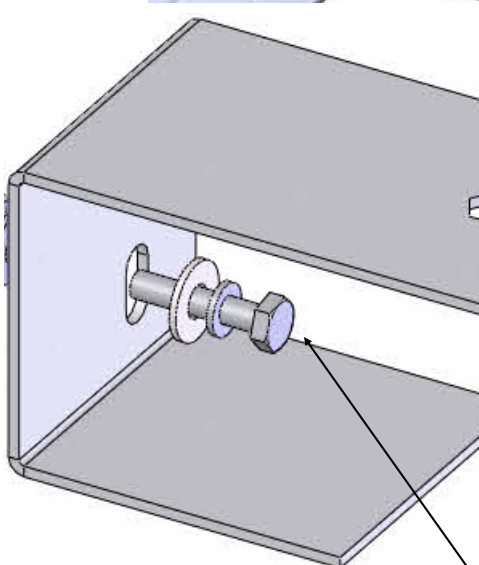
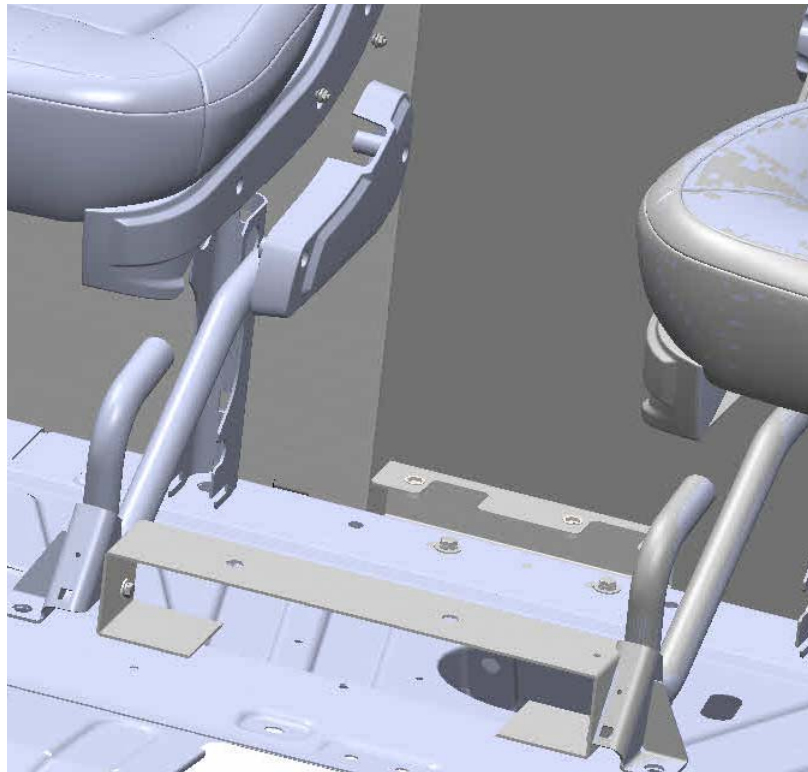


USE PHILLIPS SCREWDRIVER AND REMOVE (3) SCREWS. PULL TRIM AWAY AND STORE SCREWS AND TRIM PARTS FROM BOTH SEATS

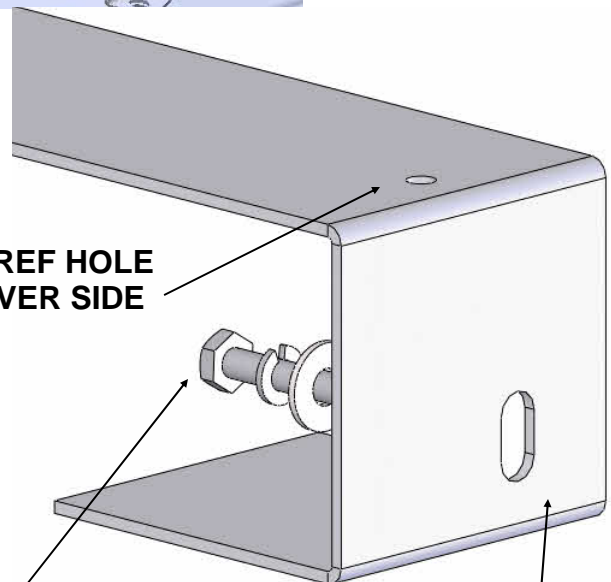


DRILL THRU EXISTING HOLE WITH A 3/8" DRILL W/STOP AS SHOWN ON PAGE 3  
INSERT FAS0052 PLUSNUT ON EACH SEAT BRACKET

**INSTALL FRONT MNTG BRKT ASS'Y (45693-G)  
BETWEEN FRONT SEATS USING THE PLUSNUTS YOU JUST INSTALLED**



**NOTE: REF HOLE  
ON DRIVER SIDE**



**NOTE: SLOT TO THE REAR**

FAS0078 1/4-20X1.00" HEX HD SCREW  
FAS0060 1/4 SPLIT LOCK WASHER  
FAS0067 1/4 FLAT WASHER

**DO NOT FULLY TIGHTEN, WAIT UNTIL THE CCD IS ATTACHED TO THIS BRACKET  
THEN FULLY TIGHTEN**

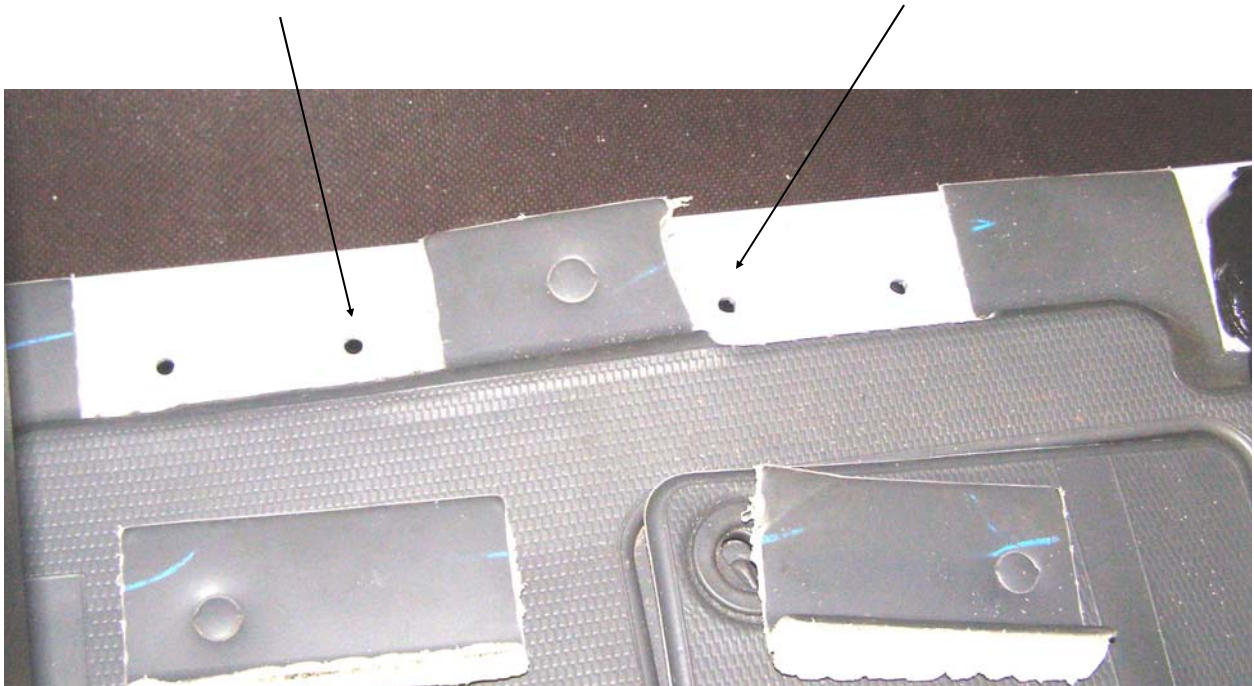


## INSTALL REAR MNTG BRLK ASS'Y (45690-G)

REMOVE FLOOR TRIM OVER HOLES IN BETWEEN REAR OF SEATS

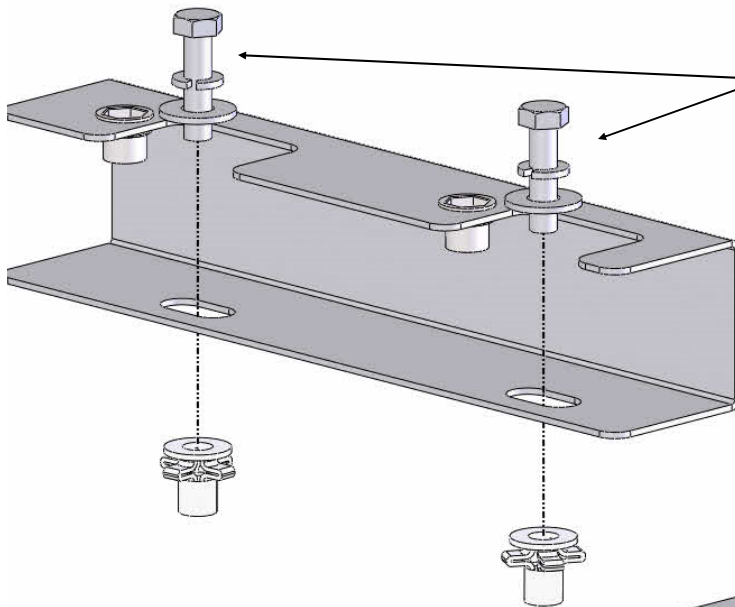
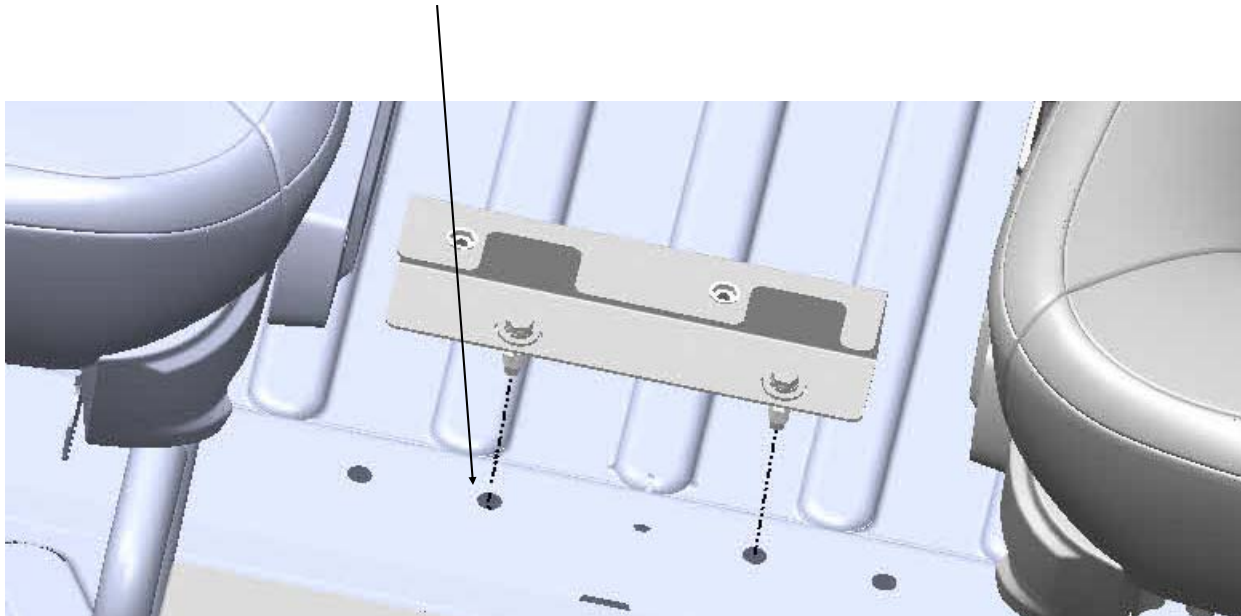


USE CENTER TWO HOLES FOR MOUNTING



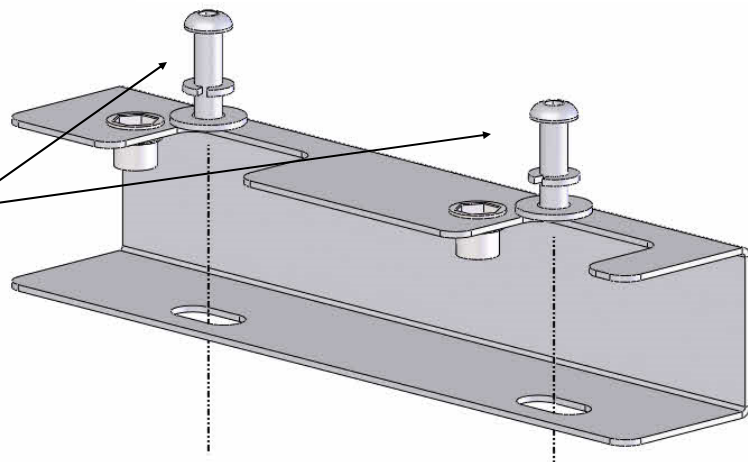
## INSTALL REAR MNTG BRLK ASS'Y (45690-G) CONTINUED

THESE HOLES MAY HAVE A 8MM WELD NUT. IF IT DOES USE 8MM SCREW SUPPLIED.  
IF THERE IS NOT A 8MM WELD NUT DRILL W/STOP FOR A 5/16 PLAINUT (FAS0091)  
:SEE PAGE 3 FOR INSTRUCTIONS.

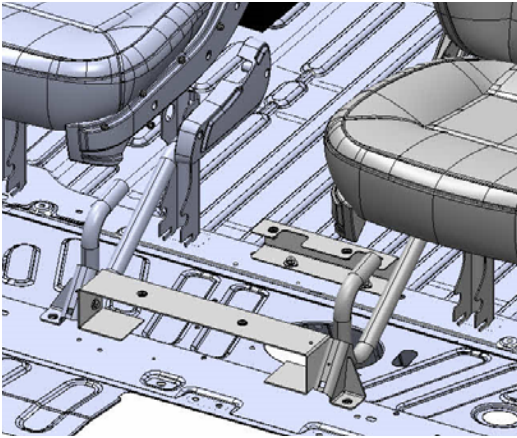


IF NO 8MM WELD NUTS ARE INSTALLED USE  
(2) FAS0587 5/16 X 1.25 HH SCREWS  
(2) FAS0098 5/16 SPLIT LOCK WASHERS  
(2) FAS0112 5/16 FLAT WASHERS

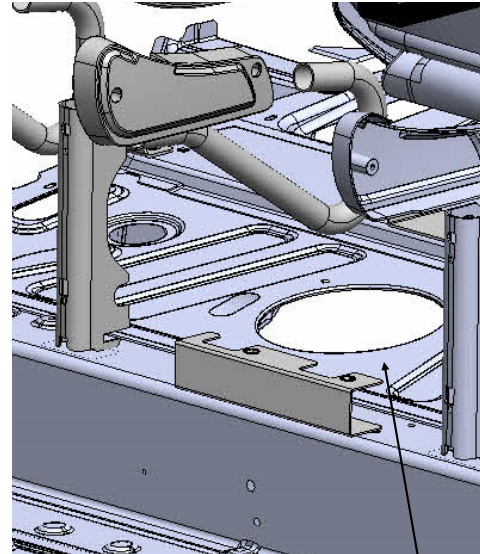
IF 8MM WELD NUTS ARE INSTALLED USE  
(2) FAS0727 BUT HD 8MM SCREWS  
(2) FAS0098 5/16 SPLIT LOCK WASHERS  
(2) FAS0112 5/16 FLAT WASHERS



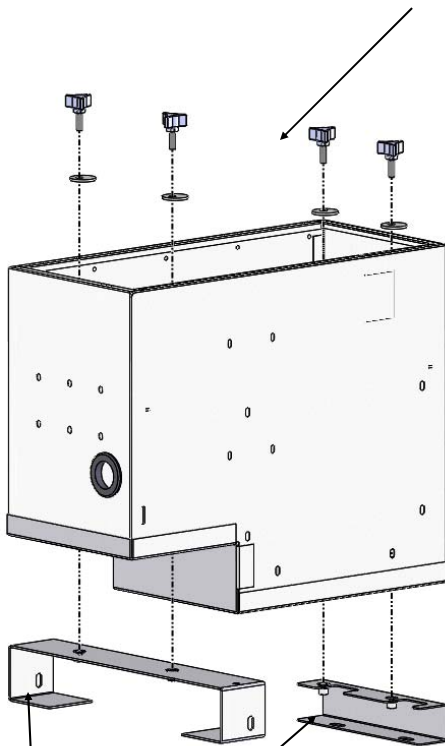
## INSTALL CCD10 IN VEHICLE



SECURE CCD TO FLOOR MNTG BRKTS USING  
(4) FAS0760 5/16 X 18 X 1 THUMB WHEELS  
(4) 21166-0 ECCENTRIC WASHERS

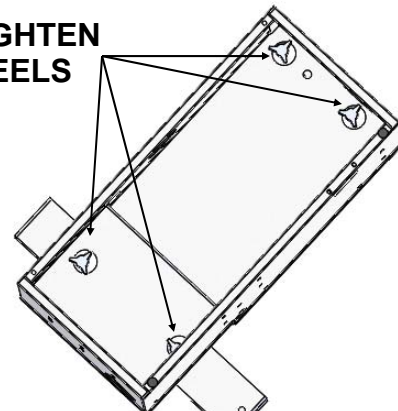


IF YOU NEED TO ACCESS THE COVER FOR THE FUEL SENDER, LOOSEN THUMB WHEELS AND LIFT CCD10 OUT. WHEN COMPLETE REINSTALL CCD.



MAKE SURE TO FULLY TIGHTEN  
THE FAS0760 THUMB WHEELS

NOW FULLY TIGHTEN FASTENERS FOR THE  
45693-G





## YOUR INSTALLATION IS NOW COMPLETE



**DOUBLE CHECK ALL FASTENER LOCATIONS TO BE SURE THAT ALL  
FASTENERS ARE TIGHTENED TO SPECIFICATIONS.  
YOUR INSTALLATION IS NOW COMPLETE!  
STOW THIS COPY IN THE VEHICLE FOR FUTURE REFERENCES!**