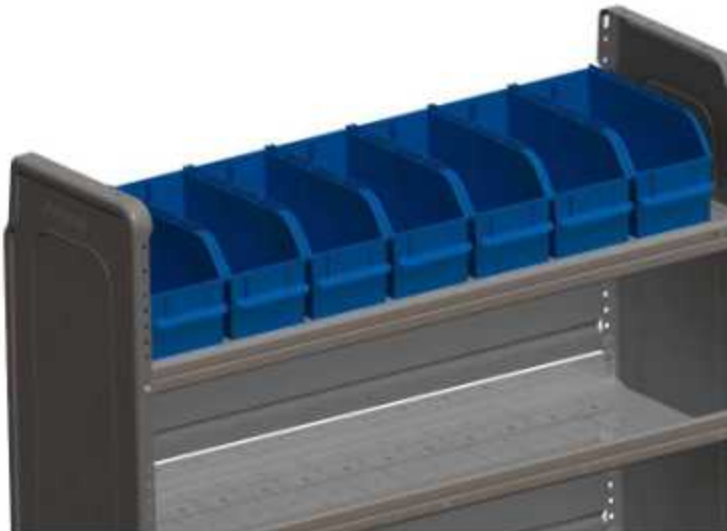


**ADRIAN STEEL**Cargo Management Solutions For Commercial Vehicles

## BIN SET FOR AD44, BR76012



### PRODUCT WEIGHT

**13**

### WIDTH x DEPTH x HEIGHT

**44 x 14 x 6**

### CAPACITY

**15 LBS PER BIN**

### COLOR

**ADRIAN BLUE**

### CATALOG NUMBER

**BR76012**

### PRODUCT FEATURES

An extruded aluminum bin rail is designed to be used with the AD Series shelving. The bin rail allows for positive retention of the SBINS in an AD shelving unit while still allowing for quick and easy removal of the parts bins for transport to the jobsite or for inventory replenishment. This bin set includes seven (7) 6" wide bins. Front mounted card slots let you identify the contents of each bin (compartment). Optional dividers are available for further flexibility.

### PRODUCT APPLICATION

**This product is ideal for organizing inventory of small and/or hard to manage loose/bulk parts or materials.**

The information contained in this document is the sole property of ADRIAN STEEL COMPANY. ADRIAN STEEL COMPANY retains the right to modify and/or change the product of its design at any time without prior notification.