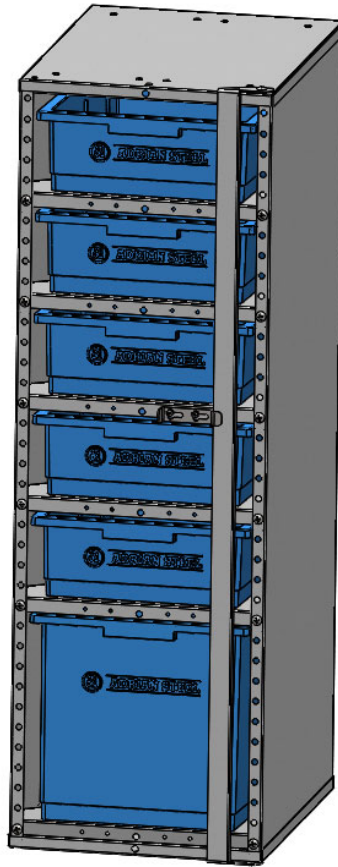


**ADRIAN STEEL®**

Cargo Management Solutions for Commercial Vehicles

6 DRAWER BIN CABINET

**PRODUCT WEIGHT****80 lbs.****WIDTH x DEPTH x HEIGHT****14.4x 18.75 x 44"****CAPACITY****40 Lbs in Deep Bin
25 Lbs in shallow Bins****COLOR****GRAY****CATALOG NUMBER****BC6ADJ**

PRODUCT FEATURES

6 Drawer Cabinet featuring Blue Adrian Steel Bins, 5 shallow and 1 deep. Other manufacturers bins can be accommodated due to the adjustability of the design. The shelves adjust vertically to handle different bins and arrangements of the bins. Adjustment is same as AD Shelving with screws in the front and pins at the rear of the shelves. An integral Latch Bar and Latch feature prevents bins from sliding out of the cabinet. Additionally, shelves are designed to slope towards the back of the cabinet.

SEE PAGE 2 FOR APPLICATION NOTES AND ACCESSORIES, OTHER PRODUCTS THAT WORK WITH THIS UNIT.

PAGE 1 of 2

The information contained in this document is the sole property of ADRIAN STEEL COMPANY. ADRIAN STEEL COMPANY retains the right to modify and/or change the product of its design at any time without prior notification.



CATALOG NUMBER BC6ADJ

PRODUCT APPLICATION

**This product is for interior van applications and can be used with
or without AD Rail Systems.**

ACCESSORIES THAT WILL WORK WITH THIS PRODUCT

CATALOG NUMBER

DESCRIPTION

SBIN120418

Shallow Bin

SBIN121218

Deep Bin

SPECIAL APPLICATION NOTES

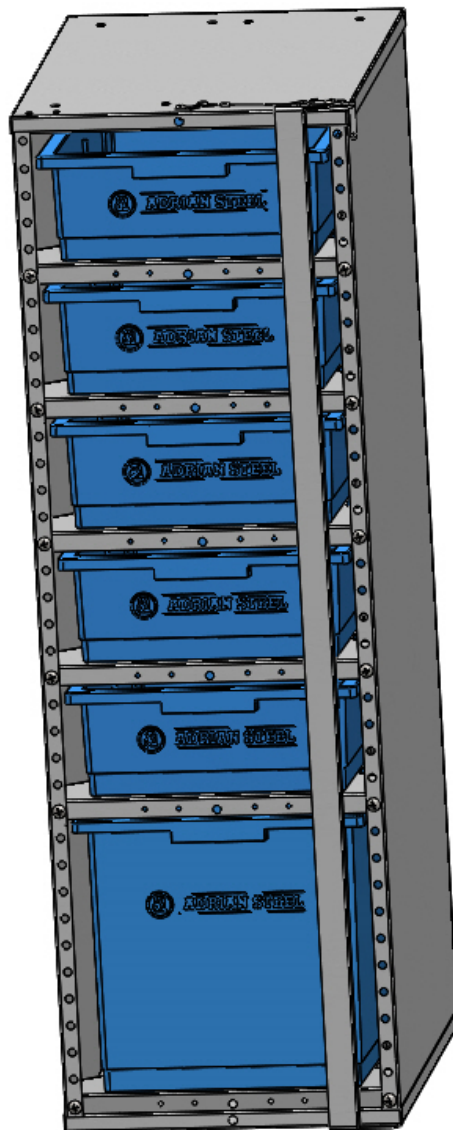
**Additional accessories may be compatible with this product.
Please consult with ADRIAN STEEL ENGINEERING to review
specific applications not listed here.**

Introduction / Comments:

This cabinet holds 6 Blue Adrian Steel bins, 1 deep and 5 shallow, or can be adjusted to accommodate other manufacturer's bins. Deep bin, which typically holds the most and heaviest cargo, should be located in the bottom slip.

Note:

It is advised that all fasteners used in this assembly and installation should be checked for tightness at the following intervals: @ 2-weeks and again @ 6-weeks of operation. This preventive maintenance step must be completed to ensure your Product gives you long service life.



BC6ADJ 6 DRAWER BIN CABINET

- PRECAUTIONS -



CAUTION



**THE USE OF AIR IMPACT TOOLS CAN
OVER-TORQUE FASTENERS AND
CAUSE FASTENER FAILURE!**



CAUTION



**ALL INSTALLATION HOLES SHOULD BE SEALED
WITH SILICON OR BUTYL SEALANT TO PREVENT
EXHAUST FUMES FROM ENTERING THE VEHICLE!**



DANGER



**INSPECT FOR FUEL TANK, FUEL LINES, BRAKE LINES, HIGH
VOLTAGE BATTERIES AND ELECTRICAL LINES PRIOR TO
DRILLING TO AVOID DAMAGING CRITICAL VEHICLE SYSTEMS
OR INJURY TO INSTALLER DURING INSTALLATION PROCESS!**



CAUTION



**TO AVOID DAMAGING THE VEHICLE ALWAYS USE DRILL
STOPS WHEN DRILLING ANY INSTALLATION HOLES!
ADRIAN AVAILABLE PART #'S 31121-0 (1/2" DEEP),
31122-0 (3/4" DEEP)**



- IMPORTANT WARRANTY REQUIREMENTS -

1. SUBSTITUTING ADRIAN STEEL SPECIFIED FASTENERS FOR ASSEMBLY AND/OR INSTALLATION WILL VOID YOUR PRODUCT WARRANTY.
2. ALL HOLES DRILLED INTO VEHICLE SHOULD HAVE THE RAW METAL EDGES SEALED WITH A SELF-ETCHING PRIMER TO RESIST CORROSION AND POTENTIAL FASTENER POINT FAILURE.
3. ALL FASTENERS USED IN THE INSTALLATION OF THIS PRODUCT SHOULD BE TIGHTENED TO THE TORQUE(S) SPECIFIED IN THESE INSTRUCTIONS.
4. THESE INSTRUCTIONS SHOULD BE KEPT WITH THE VEHICLE.

THE BASIC TOOLS NEEDED FOR MOST INSTALLATIONS



DRILL



DRILL BIT WITH
STOP



RATCHET, SOCKETS
AND/OR WRENCHES



SCREWDRIVERS



MEASURING TAPE

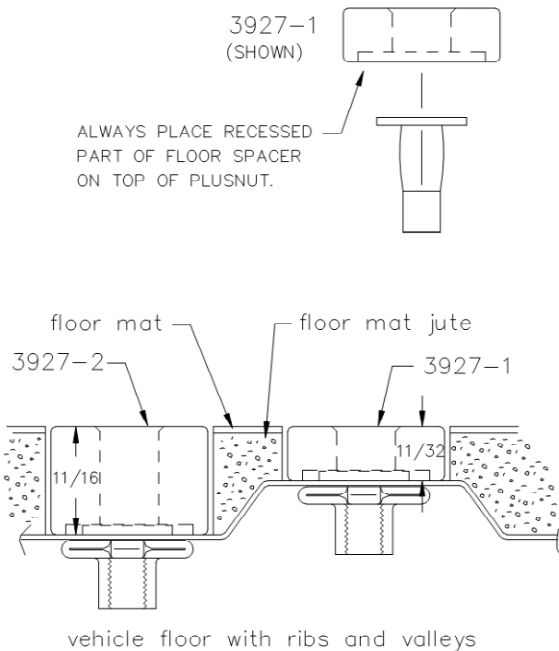
ADDITIONAL TOOLS MAY BE NEEDED FOR THIS INSTALLATION AND THEY WILL BE IDENTIFIED IN THE STEPS THAT FOLLOW.

If your vehicle contains carpet or a rubber floor mat you will need to prepare the mounting location. Position the product to be installed into the vehicle and once you are satisfied with the mounting locations, mark the mounting locations. Using a 1-3/16" diameter carpet cutter (P/N: 31183-0). Select the appropriate floor spacers as shown in the illustration. Set those aside for use later into the installation process.

Using the correct drill bit size for the selected plusnut, drill the mounting holes in the vehicle sheet metal to prepare for installing the plusnuts.

If you are thru-bolting at any of the locations simply drill a hole that is 1/16" larger than the bolt size(s) for those locations.

Once you have drilled the holes into the vehicle, the raw metal edges should be sealed using a self-etching primer to resist corrosion and potential fastener point failure.



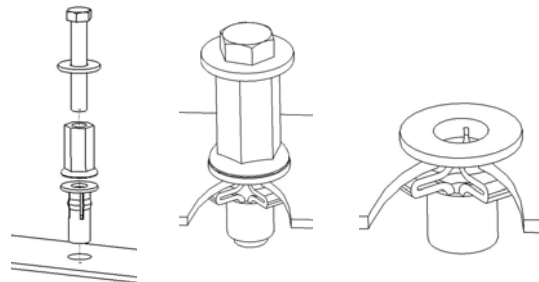
A PLUSNUT (RIVNUT) SETTING TOOL IS REQUIRED FOR PLUSNUT (RIVNUT) INSTALLATION AND IS SUPPLIED WITH THIS KIT. OR USE AN AIR POWERED PLUSNUT SETTING GUN.

1/4-20UNC Plusnut (FAS0052) Use 3/8" dia. drill w/stop

FAS0080 SCREW, HXHD, 1/4-20UNCx2.00", G8
FAS0067 WASHER, FLAT, 1/4"ID
22200-0 PLUSNUT TOOL

5/16-18UNC Plusnut (FAS0091) Use 1/2" dia. drill w/stop

FAS0095 SCREW, HXHD, 5/16-18UNCx2.00", G8
FAS0086 WASHER, FLAT, 5/16"ID
22200-0 PLUSNUT TOOL

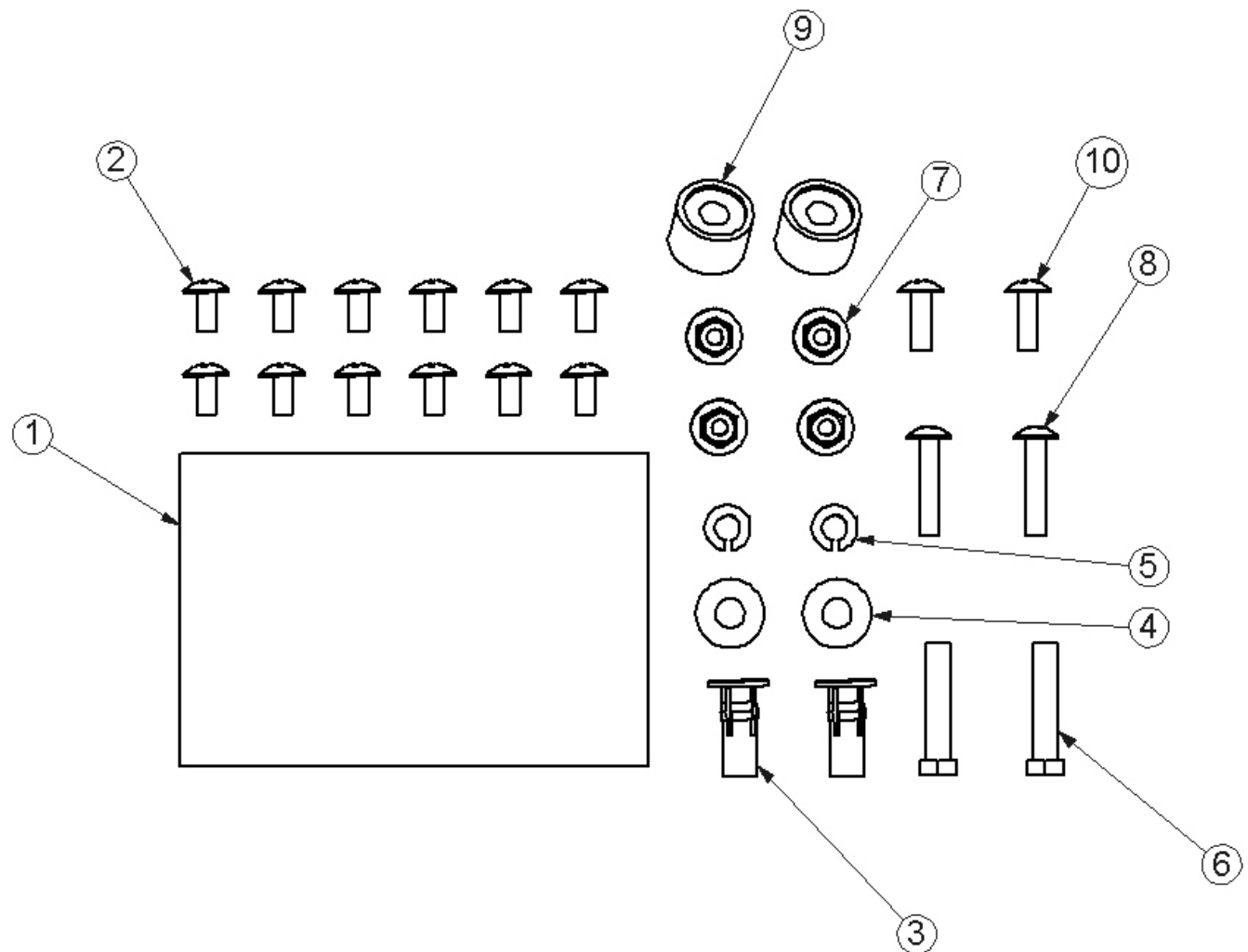


Place barrel of the plusnut body in sheet metal thru hole until flange is flush with sheet metal.

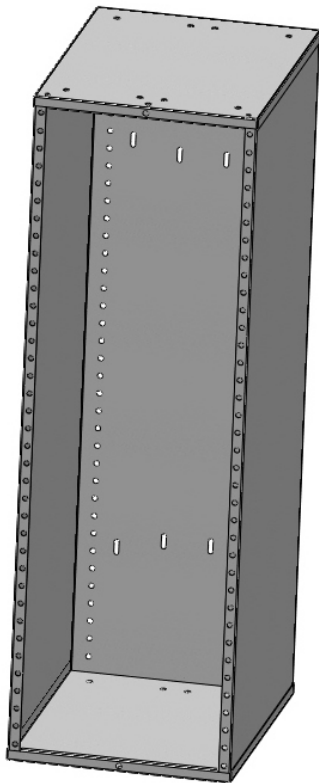
Using a 9/16" combination wrench of plusnut tool body and a second hand wrench, ratchet, or air tool, rotate the hex bolt head CW to draw plus nut flanges up (set the plusnut).

Installation and/or Assembly Fasteners
BAGBC6

ITEM NO.	PART NUMBER	DESCRIPTION	BAGBC6/QTY.
1	BAG0406-A	4" x 6" 3MIL AUTOBAG	1
2	FAS0061	Screw, Truss Hd. Ph, 1/4-20x0.50	12
3	FAS0091	Plusnut, 5/16	2
4	FAS0112	Washer, Flat, 5/16, NI ZN	2
5	FAS0098	Washer, Lock, Split, 5/16, Zinc Plate	2
6	FAS0092	Screw, Hex Hd, 5/16-18x1.50 Zn Plate, G8	2
7	FAS0055	Nut, Hex Flange, Nylock 1/4-20	4
8	FAS0053	Screw, Truss Hd. Ph, 1/4-20x1.25"	2
9	03927-2	Tall Floor Spacer	2
10	FAS0062	Screw, Truss Hd. Ph, 1/4-20x0.75	2



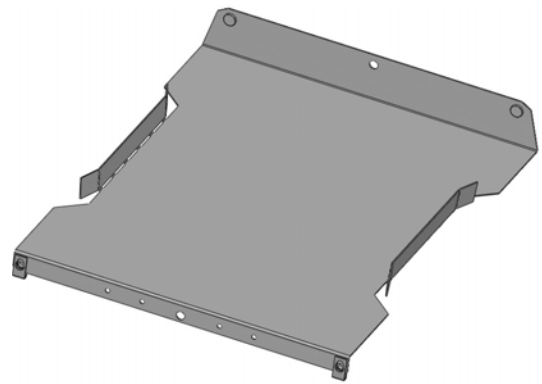
NOTE: ITEMS 2, 7 & 8 ARE FOR ASSEMBLY. REMAINDER ARE PROVIDED FOR INSTALLATION.



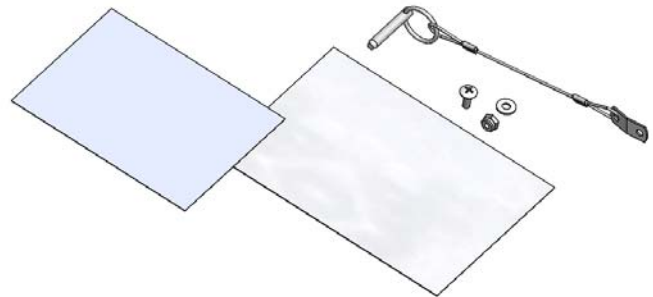
46573-G CABINET
NOTE : THIS CABINET
IS SYMMETRICAL AND
CAN BE INSTALLED
WITH EITHER END UP.



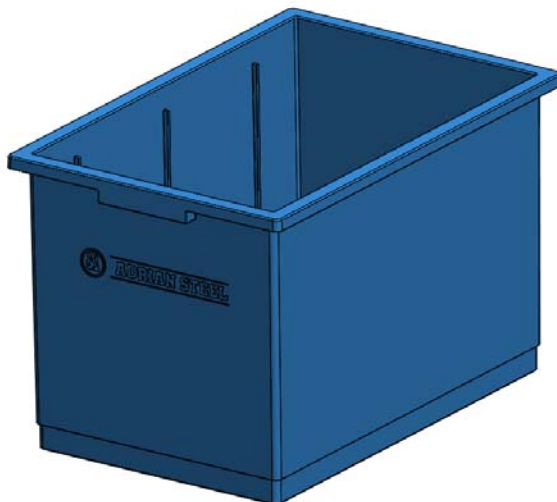
46581-G LATCH BAR



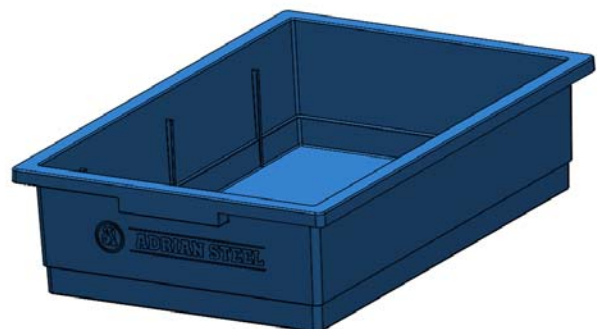
50202-G SHELF ASM. 6 REQUIRED
MAKE SURE U-NUTS ARE VERTI-
CAL AS SHOWN WHEN INSTALLING
INTO CABINET.



INSTALL HDW51918 LATCH KIT,
PER ENCLOSED INSTRUCTIONS.



SBIN121218 DEEP BIN.
1 REQUIRED



SBIN120418 SHALLOW BIN.
5 REQUIRED

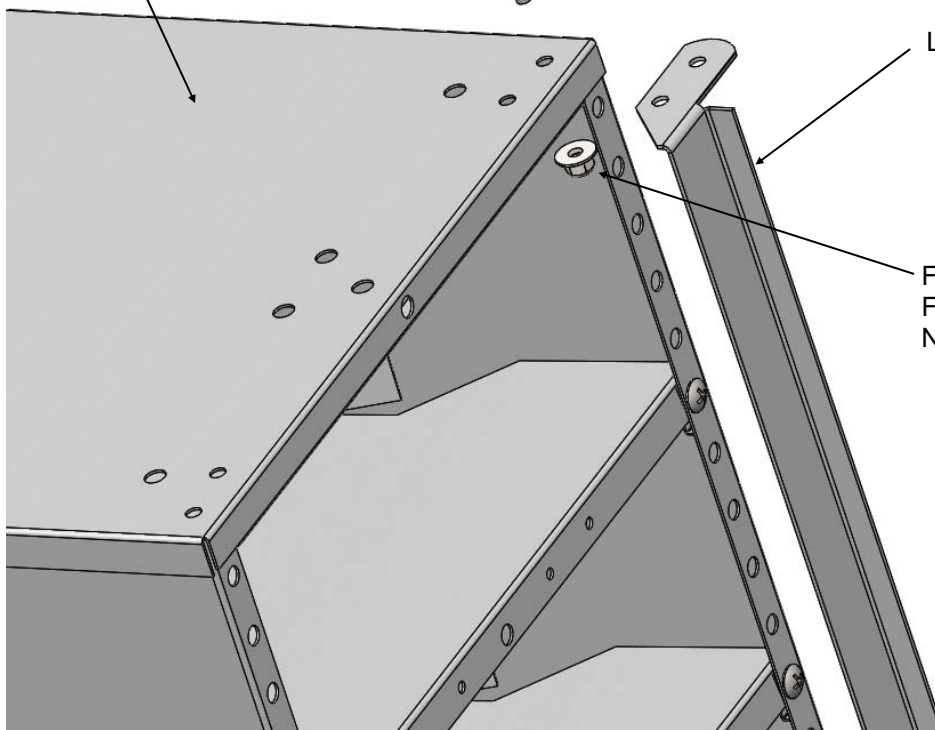
Step 01 ASSEMBLE LATCH BAR TO CABINET

CABINET ASM

FAS0062 1/4-20 X 3/4"
TRUSS HD PHILLIPS
SCREW. 2 REQ'D

LATCH BAR

FAS0055 1/4-20
FLANGE HEX LOCK-
NUT. 2 REQ'D



SNUG FASTENERS. DO NOT OVER TIGHTEN. LATCH BAR MUST BE ABLE TO BE ROTATED.

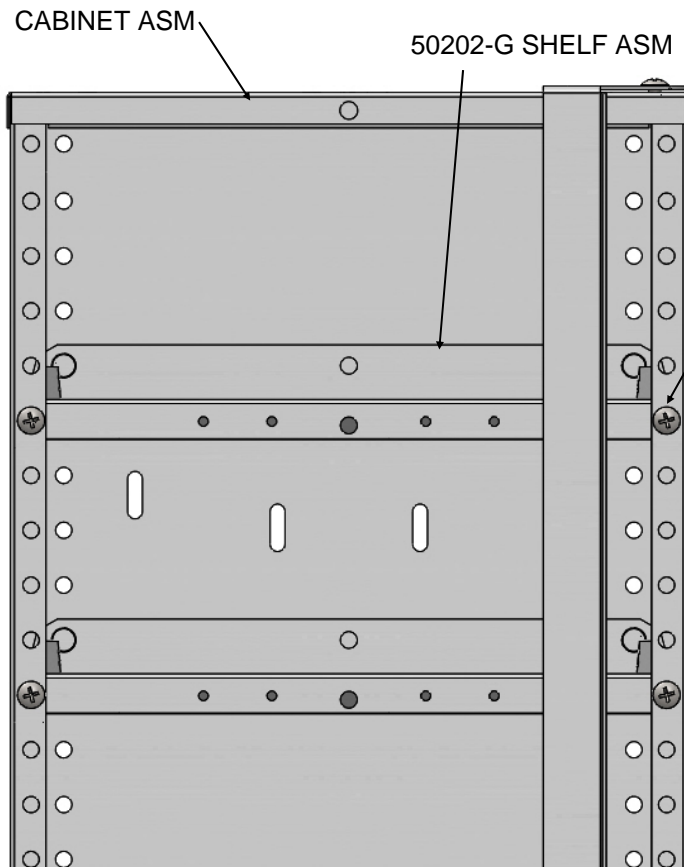
Step 02 INSTALL CABINET IN VEHICLE

INSTALL ON RAIL KIT OR USE SPACERS IF MOUNTING DIRECTLY TO FLOOR TO LEAVE SPACE FOR LATCH BAR. ATTACH TO ADJACENT CABINETS, SHELF UNITS OR TO WALL MOUNT RAIL OR UPPER VEHICLE STRUCTURE. USE BRACKETS AS REQUIRED. IF ATTACHING BACK SIDE OF THIS CABINET TO ANOTHER CABINET OR SHELF END PANEL, USE SPACERS FOR CLEARANCE FOR THE SHELF PINS. SOME HOLES AND SLOTS ARE PROVIDED. FOR UNIQUE ARRANGEMENTS, DRILL AS REQUIRED.

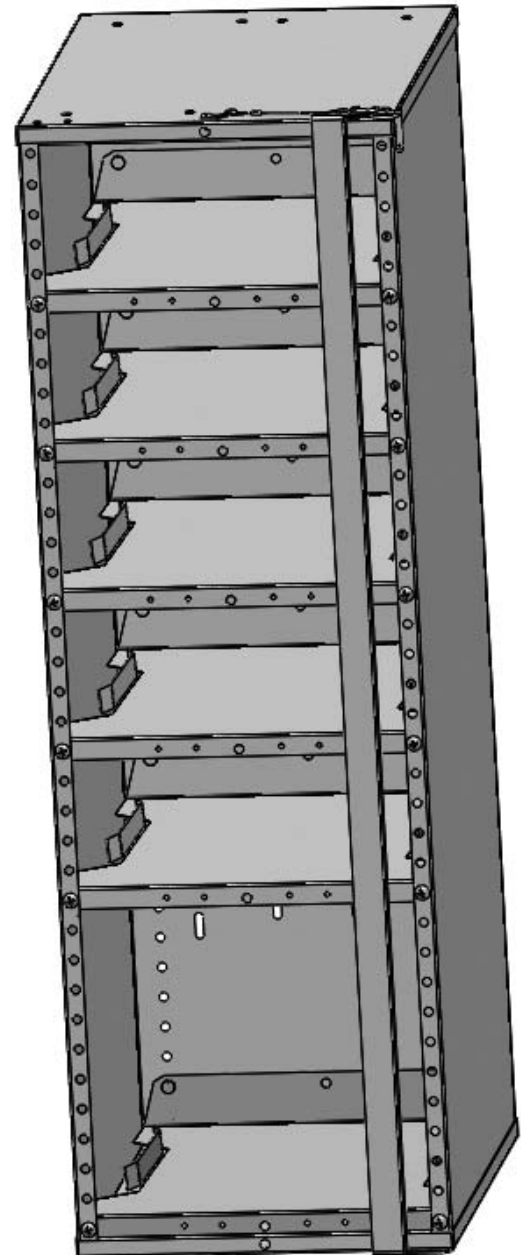
SEE INTERIOR PDS, IF APPLICABLE, FOR FURTHER INSTRUCTIONS.

SHELVES TO BE INSTALLED AFTER CABINET IS INSTALLED IN VEHICLE!!

Step 02 ASSEMBLE SHELVES



FAS0061 1/4-20 X 1/2" TRUSS HD PHILLIPS SCREW. 12 REQ'D 8 FT LBS TORQUE WHEN USING BINS FROM THESE INSTRUCTIONS, PLACE TOP SHELF IN 6TH HOLE DOWN, THEN EVERY 5TH HOLE FOR NEXT 4.



NOTE : PINS AT REAR OF SHELF ARE LOCATED 1 HOLE ABOVE U-NUTS AND SCREWS AT FRONT. THIS SETS THE SHELF SURFACE AT AN ANGLE SLOPING DOWN TO REAR. BOTTOM SHELF IS LOCATED IN BOTTOM HOLES AT FRONT, SECOND HOLES UP AT REAR.

**DOUBLE CHECK ALL FASTENERS LOCATIONS TO BE SURE THAT ALL FASTENERS ARE TIGHTENED TO SPECIFICATIONS.
YOUR INSTALLATION IS NOW COMPLETE!
STOW THIS COPY IN THE VEHICLE FOR FUTURE REFERENCES!**

Step 03 PLACE BINS IN CABINET

SLIDE BINS INTO CABINET. BINS ARE CLOSE FIT. ROTATE LATCH BAR TO ITS CLOSED POSITION (SHOWN) AND PUSH QUICK-RELEASE PIN THRU LATCH BAR AND CABINET TOP PANEL. REVERSE SEQUENCE TO SLIDE BINS OUT.

