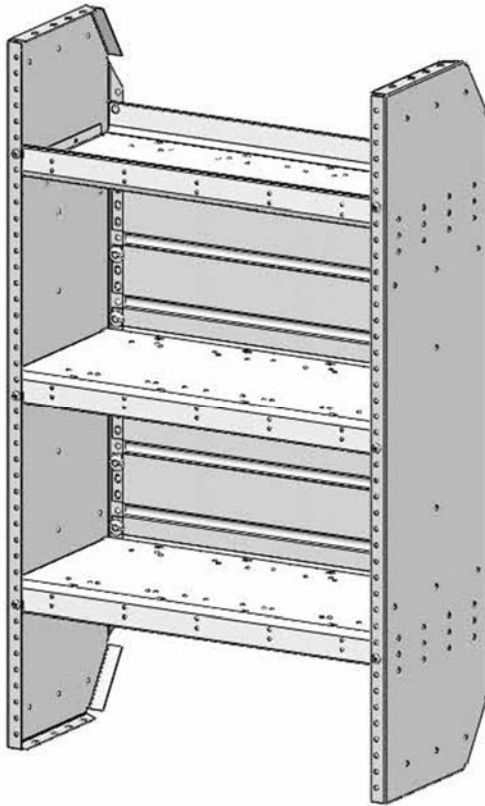




## SHELVING UNIT 44"H X 32"W X 12 D



**PRODUCT WEIGHT**  
50 LBS

**WIDTH x DEPTH x HEIGHT**  
32" x 12" x 44"

**CAPACITY**  
50 LBS PER SHELF

**COLOR**  
GRAY

**CATALOG NUMBER**  
AD1232TC14

### **PRODUCT FEATURES**

**AD series adjustable shelving unit with solid end panels and adjustable shelves. The adjustable shelves can be installed with the shelf lips "up" for cargo retention or with the shelf lips "down" to allow for the installation of accessories such as cabinet or drawer units.**

**Transit Connect. It may also be used in other vehicles including full size vans, and box trucks. A taller unit may be more desirable in these applications. This product is designed for installation into the 2014 Ford**

**SEE PAGE 2 FOR APPLICATION NOTES AND ACCESSORIES, OTHER PRODUCTS THAT WORK WITH THIS UNIT.**



**CATALOG NUMBER**      AD1232TC14

***PRODUCT APPLICATION***

This product is designed to be installed using ad rail mounting Ford  
Transit Connect

***ACCESSORIES THAT WILL WORK WITH THIS PRODUCT***

<b>CATALOG NUMBER</b>	<b>DESCRIPTION</b>
DV12	DIVIDER/PNTD; KD'S  DV12 WILL ONLY WORK WITH LIP DOWN ON SHELF
DC12AD	DIVIDER,KIT 12" AD SHELF

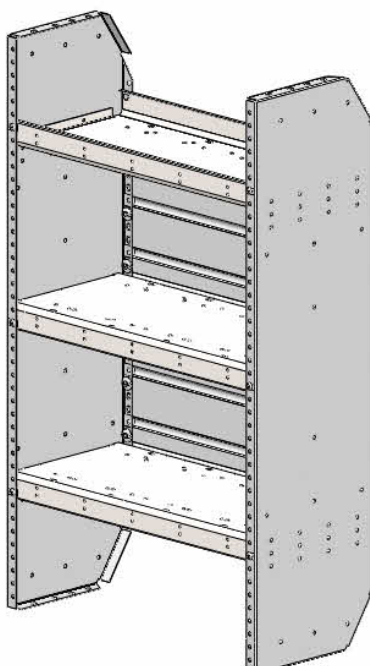
***SPECIAL APPLICATION NOTES***

**DV12 WILL ONLY WORK WITH LIP DOWN ON SHELF, THEY WILL NOT WORK  
WITH SHELVES WITH LIP UP**

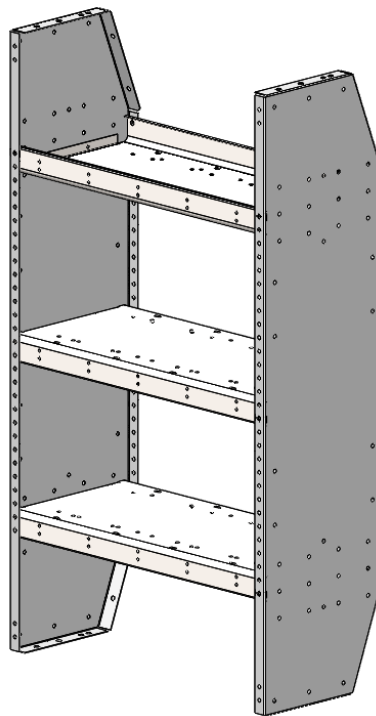
**Introduction / Comments:**

**12DX26WX44H AND 12DX32WX44H SHELF ASSEMBLY. These units are designed for the 2014 Transit Connect only. You can install (1) AD1226TC or (1) AD1232TC14 unit on either side using Rail Kit RKTC14, or (2) AD1232TC14 units per side using Rail Kit RKDTC14. Long Wheel Base Only ref Assembly Instructions 46482. It will not work in any other applications without modifications.**

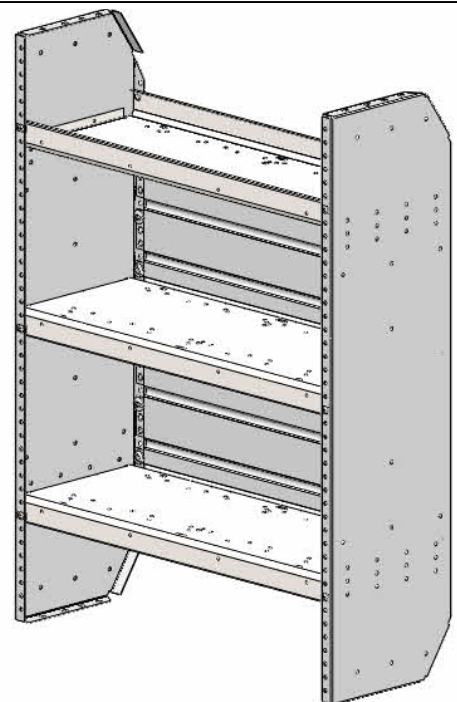
**Note:** It is advised that all fasteners used in this assembly and installation should be checked for tightness at the following intervals: @ 2-weeks and again @ 6-weeks of operation. This preventive maintenance step must be completed to ensure your Product gives you long service life.



**AD1226TC14**



**54702**



**AD1232TC14**

**NOTE: WHEN INSTALLING UNITS ON STREET SIDE. REMOVE JACK AND ASSOCIATED EQUIPMENT AND STOW. REMEMBER TO REPLACE COVER ON TRIM BEFORE MOUNTING SHELVING.**

**AD1226TC14, AD1232TC14, 54702**

## - PRECAUTIONS -





 **CAUTION**   
**THE USE OF AIR IMPACT TOOLS CAN  
OVER-TORQUE FASTENERS AND  
CAUSE FASTENER FAILURE!**



 **CAUTION**   
**ALL INSTALLATION HOLES SHOULD BE SEALED  
WITH SILICON OR BUTYL SEALANT TO PREVENT  
EXHAUST FUMES FROM ENTERING THE VEHICLE!**



 **DANGER**   
**INSPECT FOR FUEL TANK, FUEL LINES, BRAKE LINES, HIGH  
VOLTAGE BATTERIES AND ELECTRICAL LINES PRIOR TO  
DRILLING TO AVOID DAMAGING CRITICAL VEHICLE SYSTEMS  
OR INJURY TO INSTALLER DURING INSTALLATION PROCESS!**



 **CAUTION**   
**TO AVOID DAMAGING THE VEHICLE ALWAYS  
USE DRILL STOPS WHEN DRILLING ANY IN-  
STALLATION HOLES!**



## - IMPORTANT WARRANTY REQUIREMENTS -

1. SUBSTITUTING ADRIAN STEEL SPECIFIED FASTENERS FOR ASSEMBLY AND/OR INSTALLATION WILL VOID YOUR PRODUCT WARRANTY.
2. ALL HOLES DRILLED INTO VEHICLE SHOULD HAVE THE RAW METAL EDGES SEALED WITH A SELF-ETCHING PRIMER TO RESIST CORROSION AND POTENTIAL FASTENER POINT FAILURE.
3. ALL FASTENERS USED IN THE INSTALLATION OF THIS PRODUCT SHOULD BE TIGHTENED TO THE TORQUE(S) SPECIFIED IN THESE INSTRUCTIONS.
4. THESE INSTRUCTIONS SHOULD BE KEPT WITH THE VEHICLE.

### THE BASIC TOOLS NEEDED FOR MOST INSTALLATIONS



DRILL



DRILL BIT WITH  
STOP



RATCHET, SOCKETS  
AND/OR WRENCHES



SCREWDRIVERS



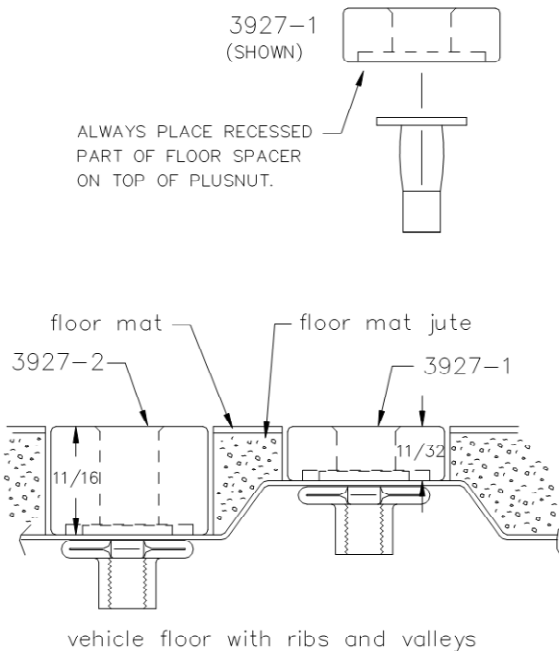
MEASURING TAPE

ADDITIONAL TOOLS MAY BE NEEDED FOR THIS INSTALLATION AND THEY WILL BE IDENTIFIED IN THE STEPS THAT FOLLOW.

If your vehicle contains carpet or a rubber floor mat you will need to prepare the mounting location. Position the product to be installed into the vehicle and once you are satisfied with the mounting locations, mark the mounting locations. Using a 1-3/16" diameter carpet cutter (P/N: 31183-0). Select the appropriate floor spacers as shown in the illustration. Set those aside for use later into the installation process. Using the correct drill bit size for the selected plusnut, drill the mounting holes in the vehicle sheet metal to prepare for installing the plusnuts.

If you are thru-bolting at any of the locations simply drill a hole that is 1/16" larger than the bolt size(s) for those locations.

Once you have drilled the holes into the vehicle, the raw metal edges should be sealed using a self-etching primer to resist corrosion and potential fastener point failure.



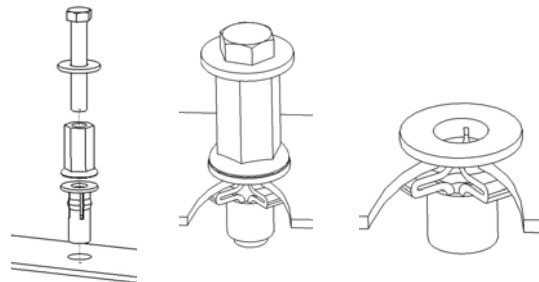
A PLUSNUT (RIVNUT) SETTING TOOL IS REQUIRED FOR PLUSNUT (RIVNUT) INSTALLATION AND IS SUPPLIED WITH THIS KIT. OR USE AN AIR POWERED PLUSNUT SETTING GUN.

1/4-20UNC Plusnut (FAS0052) Use 3/8" dia. drill w/stop

FAS0080 SCREW, HXHD, 1/4-20UNCx2.00", G8  
FAS0067 WASHER, FLAT, 1/4"ID  
22200-0 PLUSNUT TOOL

5/16-18UNC Plusnut (FAS0091) Use 1/2" dia. drill w/stop

FAS0095 SCREW, HXHD, 5/16-18UNCx2.00", G8  
FAS0086 WASHER, FLAT, 5/16"ID  
22200-0 PLUSNUT TOOL

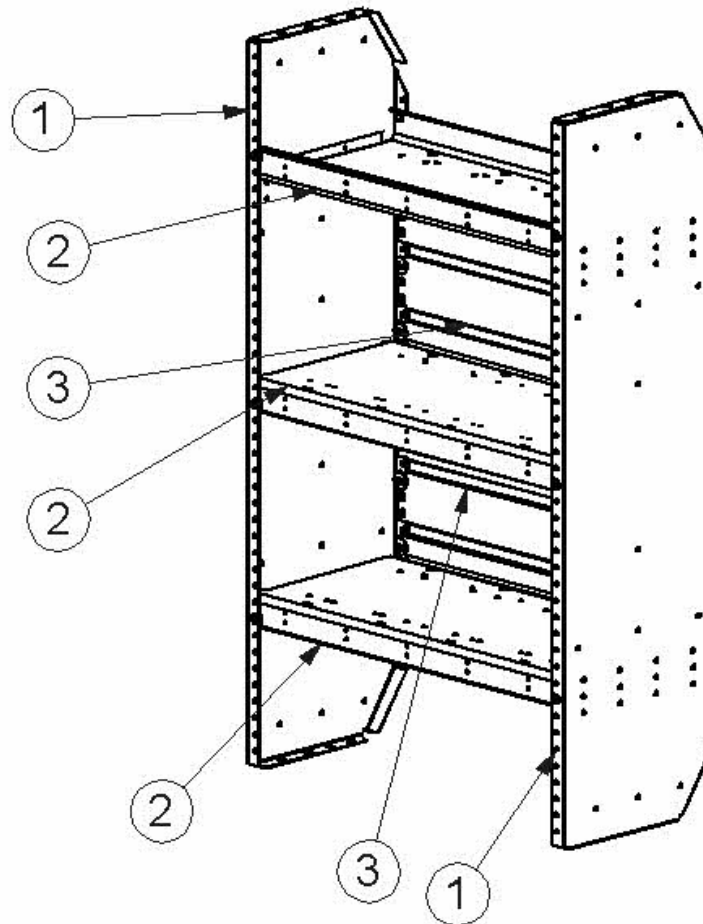


Place barrel of the plusnut body in sheet metal thru hole until flange is flush with sheet metal.

Using a 9/16" combination wrench of plusnut tool body and a second hand wrench, ratchet, or air tool, rotate the hex bolt head CW to draw plus nut flanges up (set the plusnut).

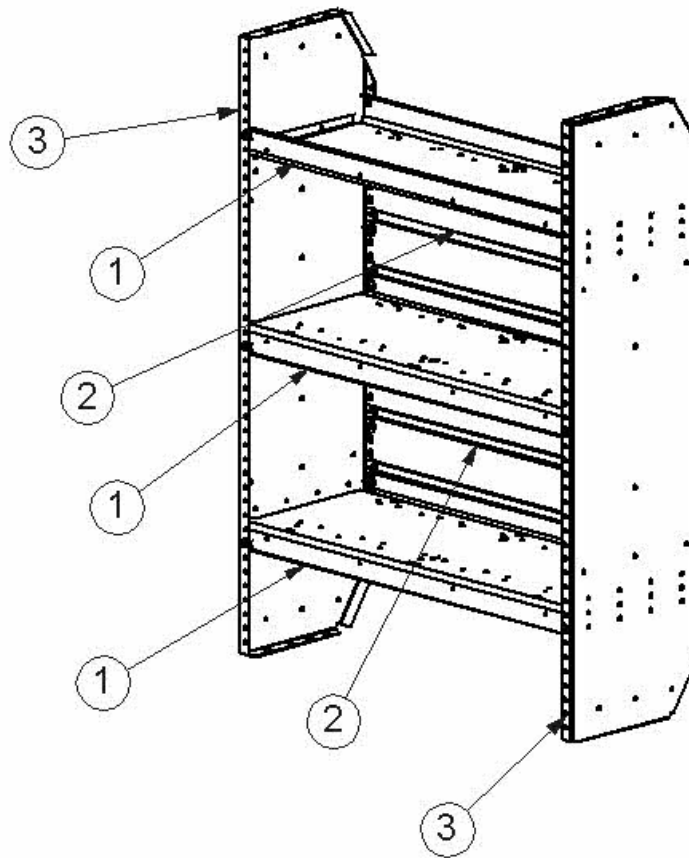
## AD1226TC14

ITEM NO.	PART NUMBER	DESCRIPTION	QTY.
1	EP1244TC14	12X44 END PANEL, TC, 2014	2
2	44367-G	12x26 PAINTED SHELF ASS'Y	3
3	38755-G	BACK PANEL 26",PAINTED	2



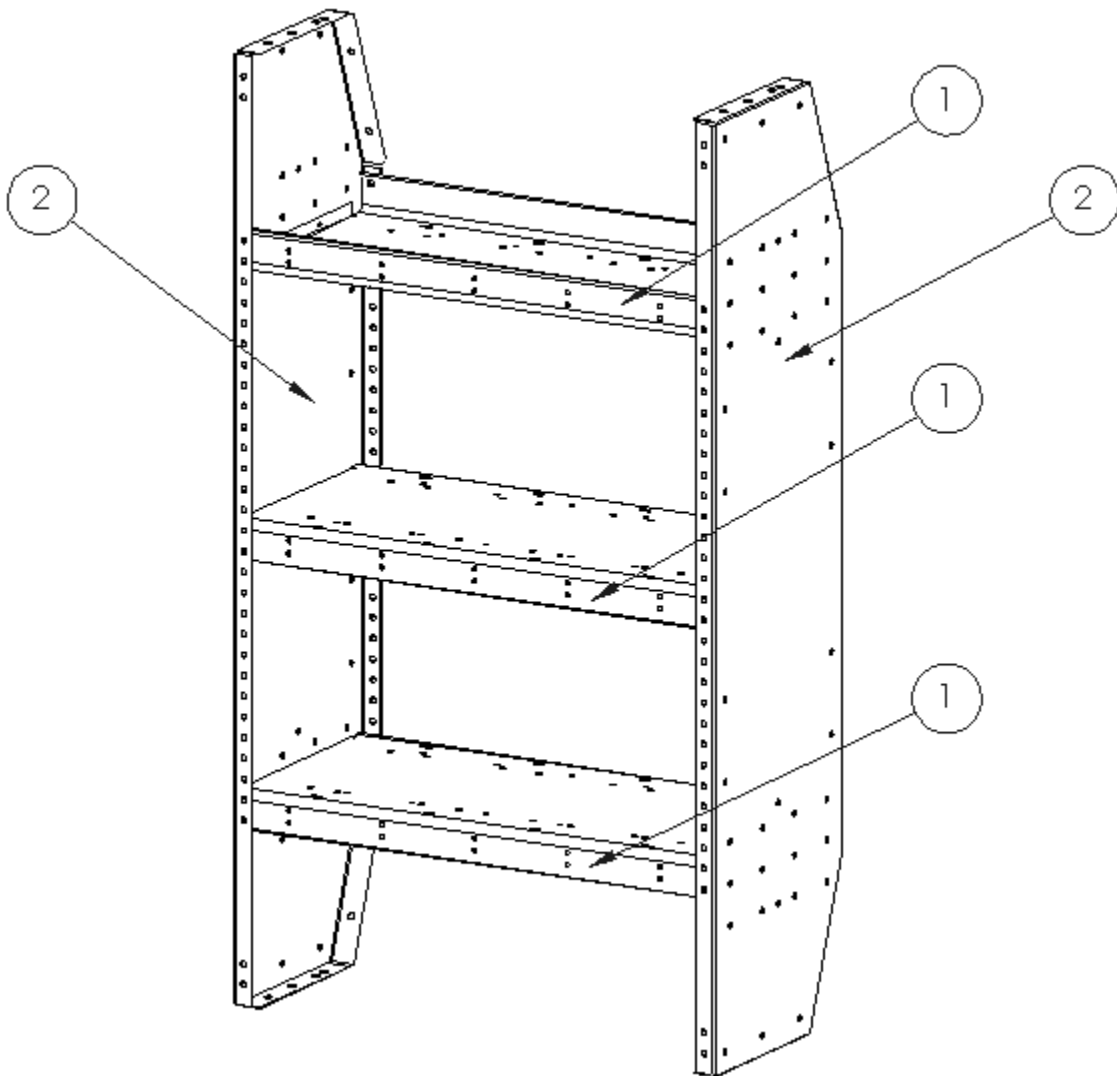
## AD1232TC14

ITEM NO.	PART NUMBER	DESCRIPTION	QTY.
1	44369-G	12x32 PAINTED SHELF ASS'Y	3
2	35318-G	BACK PANEL 32",PAINTED	2
3	EP1244TC14	12X44 END PANEL, TC, 2014	2



## 54702

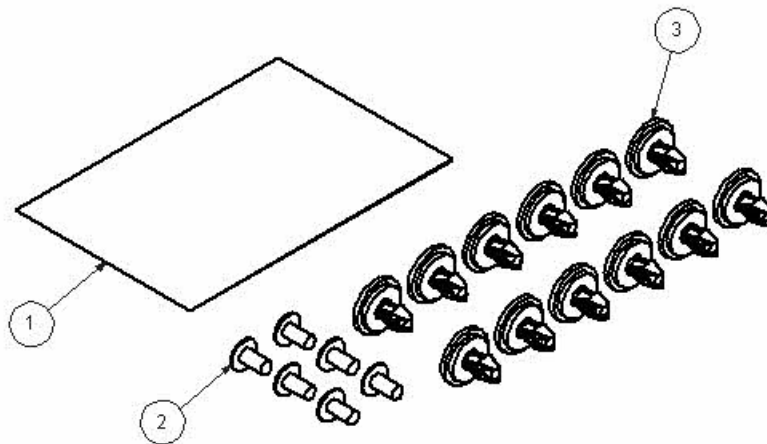
ITEM NO.	PART NUMBER	DESCRIPTION	QTY.
1	44367-G	12x26 PAINTED SHELF ASS'Y	3
2	EP1246NV2	12X46 END PANEL, NV200	2





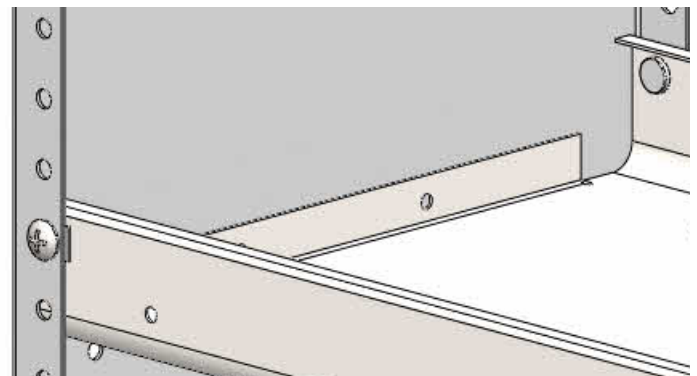
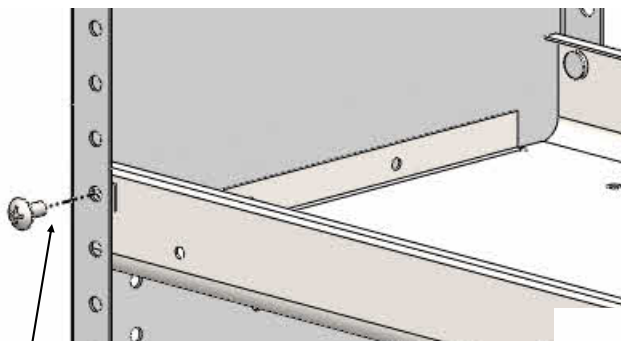
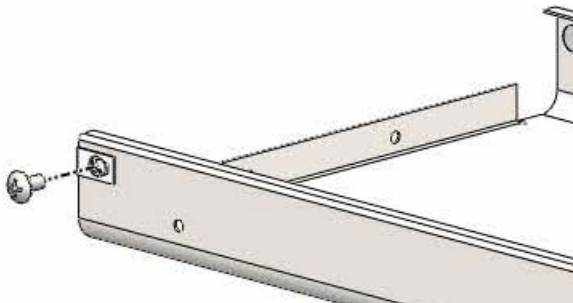
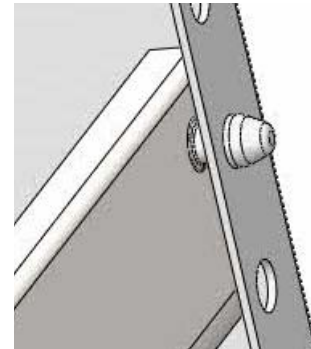
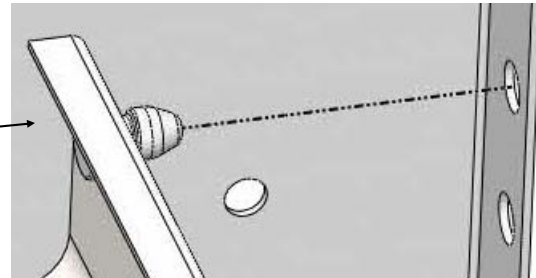
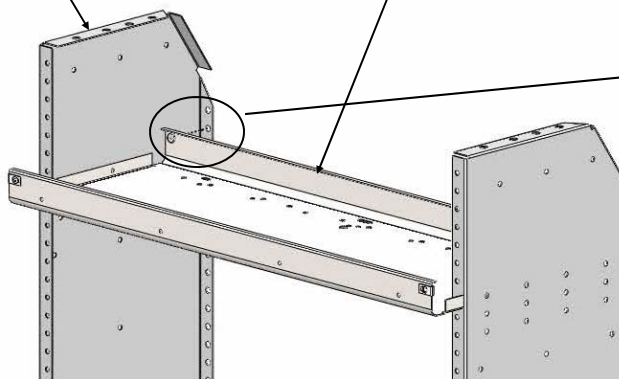
## BAGADXXFP FASTENER BAG

ITEM NO.	PART NUMBER	DESCRIPTION	BAGADXXFP/QTY.
1	BAG0406-A	4" X 6" 3MIL AUTOBAG	1
2	FAS0061	Screw, Truss Hd. Ph, 1/4-20x0.50	6
3	FAS0712	RIVET AND WASHER ASSEMBLY	12

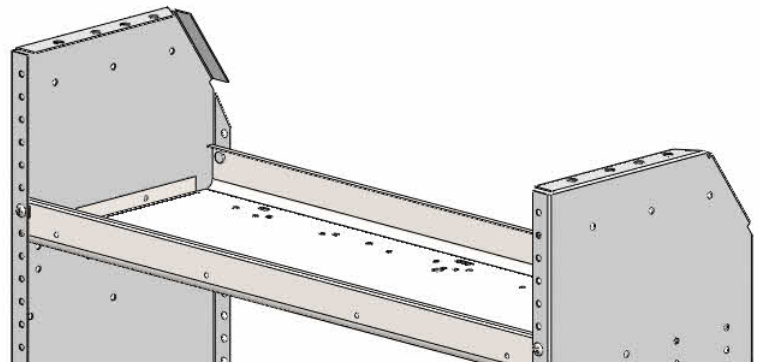


**STEP 1 FOR AD1226TC14 ASSEMBLE 44367-G 12X26 SHELF**  
**TO EP1244TC14 END PANELS**  
**FOR AD1232TC14 ASSEMBLE 44369-G 12X32 SHELF**  
**TO EP1244TC14 END PANELS**  
**TOP SHELF SHOWN LIP UP**

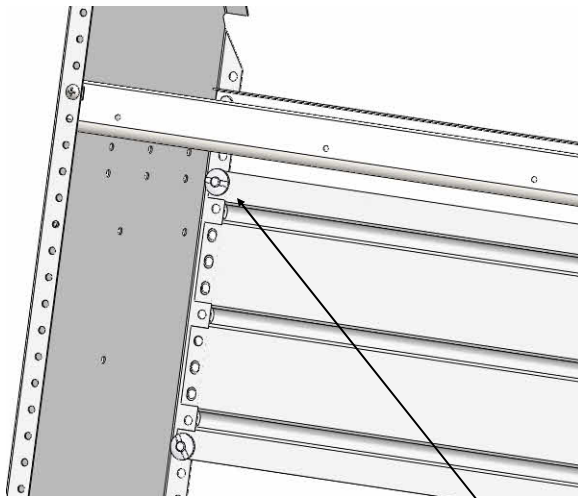
EP1244TC14  
44367-G FOR 26" UNIT  
44369-G FOR 32" UNIT



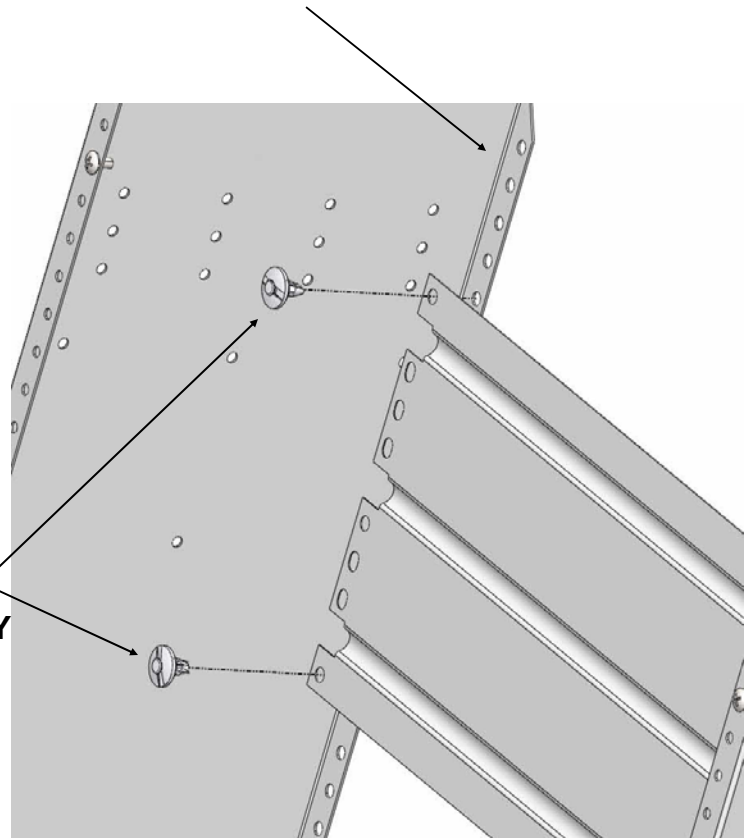
SECURE USING A FAS0061,  
1/4-20 SCREW INTO BOTH END PANELS



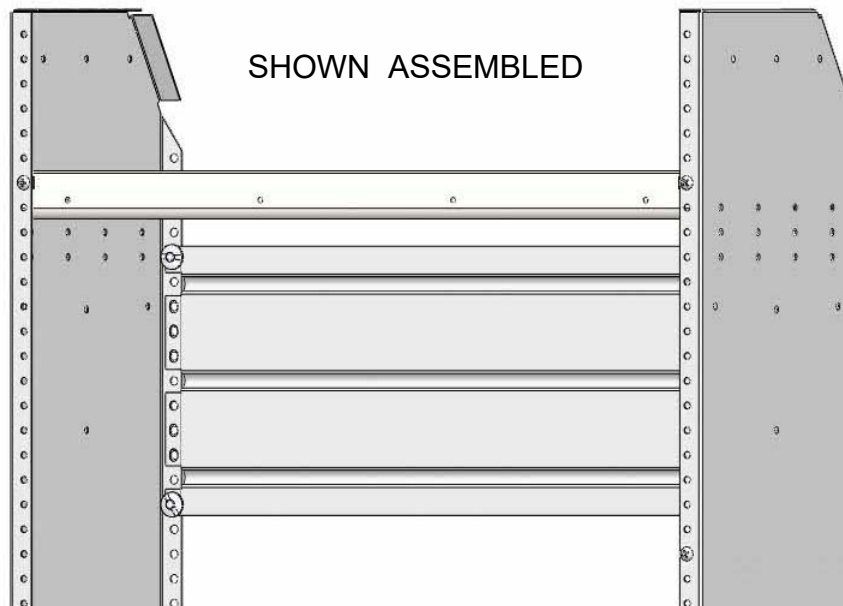
## STEP 2 ASSEMBLE 38755-G 26" BACK PANEL FOR AD1226TC14 OR 35318-G 32" BACK PANEL FOR AD1232TC14 TO EP1244TC14 END PANELS



SHOWN WITHOUT SHELF FOR CLARITY



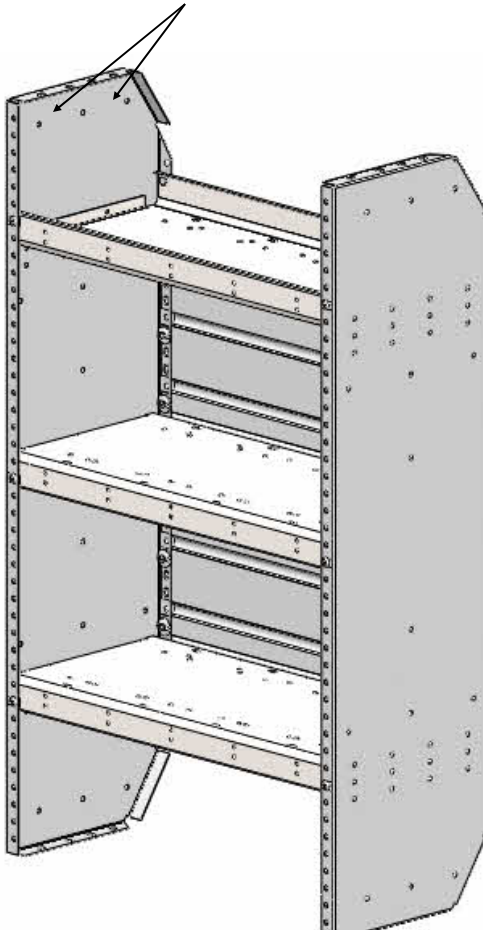
**38755-G 26" BACK PANEL  
OR 35318-G 32" BACK PANEL TO  
EP1244TC14 AS SHOWN USING  
(2) FAS0712 RIVET WASHER ASSEMBLY  
PUSH INTO HOLE TO SECURE**



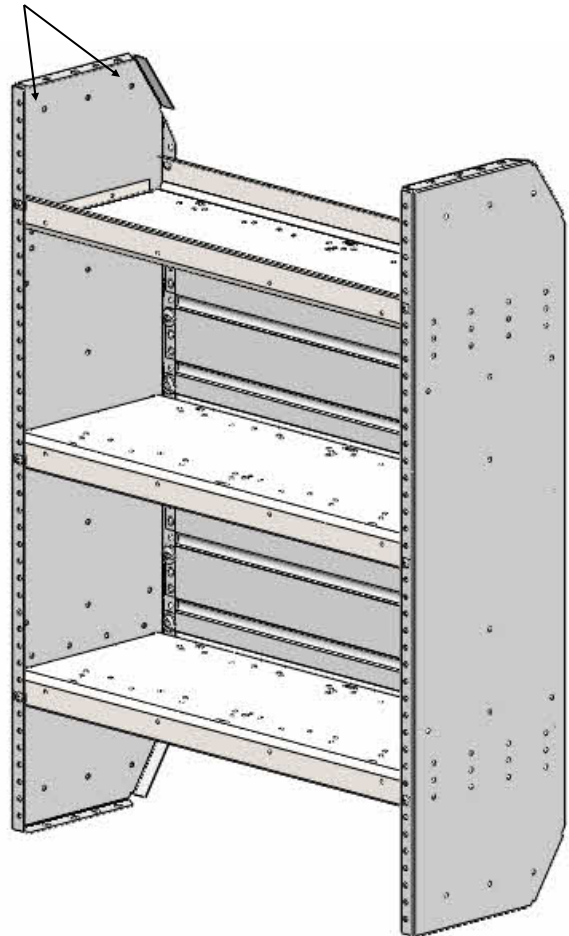
SHOWN ASSEMBLED

**STEP 3 ASSEMBLE OTHER TWO SHELVES AND REMAINING BACK PANEL  
EACH UNIT HAS 3 SHELVES AND 2 BACK PANELS. SHELVES AND BACK  
PANELS ARE ADJUSTABLE TO SUIT CUSTOMERS NEEDS.**

IF USING (2) AD1226TC14'S OR (2) AD1232TC14'S  
FASTEN TOGETHER AT TOP WITH (2) FAS0018 1/4-20 SCREWS  
AND ((2) FAS0055 1/4-20 LOCK NUTS IN HOLES SHOWN



**AD1226TC14**

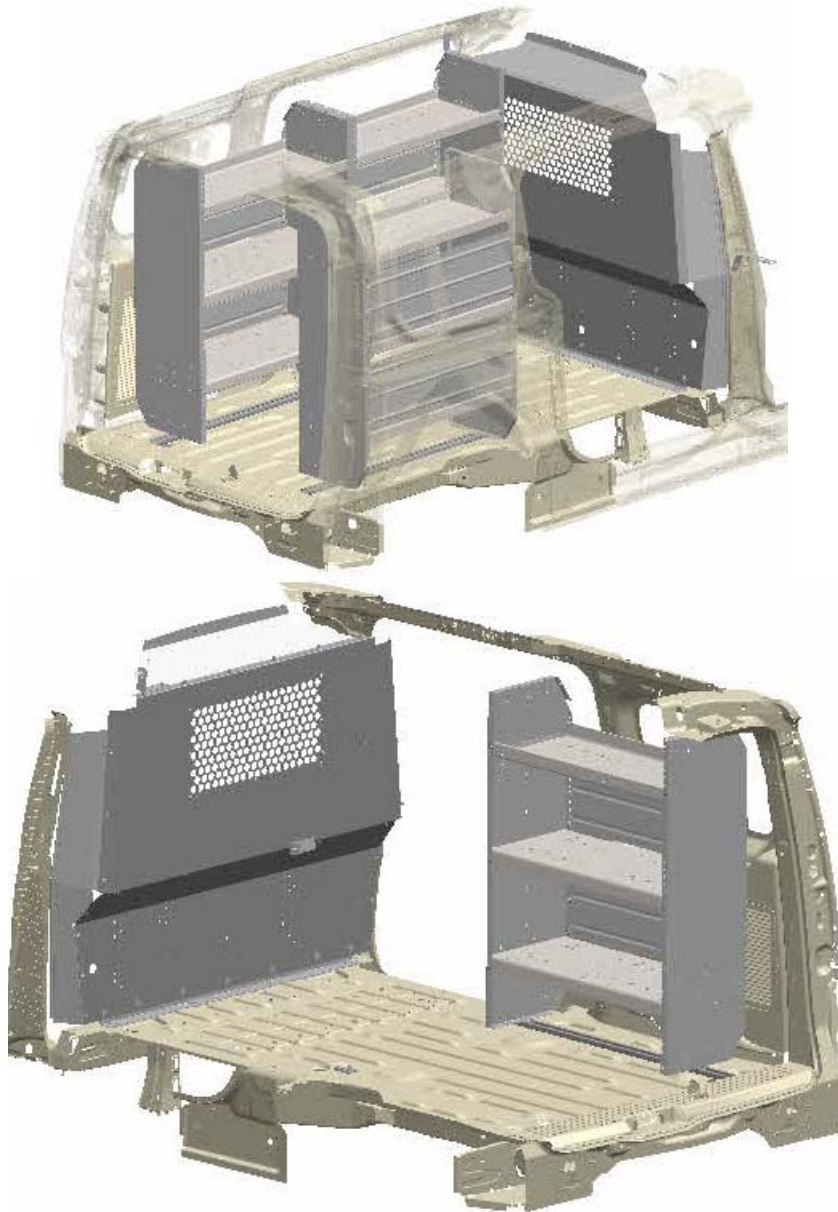


**AD1232TC14**

**DOUBLE CHECK ALL FASTENER LOCATIONS TO BE SURE THAT ALL  
FASTENERS ARE TIGHTENED TO SPECIFICATIONS.  
YOUR INSTALLATION IS NOW COMPLETE!  
STOW THIS COPY IN THE VEHICLE FOR FUTURE REFERENCES!**

## YOUR INSTALLATION IS NOW COMPLETE

For Installation into Transit Connect .  
See 46482 Rail Kit Instructions



**DOUBLE CHECK ALL FASTENER LOCATIONS TO BE SURE THAT ALL  
FASTENERS ARE TIGHTENED TO SPECIFICATIONS.  
YOUR INSTALLATION IS NOW COMPLETE!  
STOW THIS COPY IN THE VEHICLE FOR FUTURE REFERENCES!**