



**ADRIAN STEEL®**

Cargo Management Solutions for Commercial Vehicles

## AEROSOL CAN HOLDERS

### PRODUCT WEIGHT

**1.18, 1.65, 2.25,  
3.73 & 4.69 LBS**

### WIDTH X DEPTH X HEIGHT

**7.00" X 3.61" X 5.61"  
10.00" X 3.61" X 5.61"  
13.50" X 3.61" X 5.61"  
22.00" X 3.61" X 5.61"  
28.00" X 3.61" X 5.61"**

### CAPACITY

**2, 3, 4, 6 & 8 CANS**

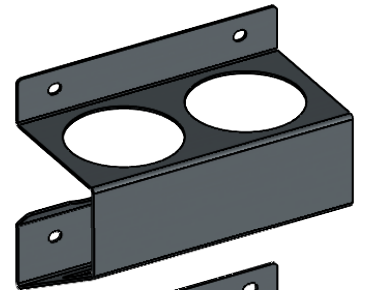
### COLOR

**GRAY**

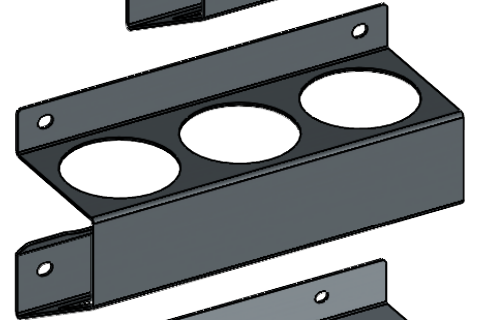
### CATALOG NUMBER

**SEE RIGHT**

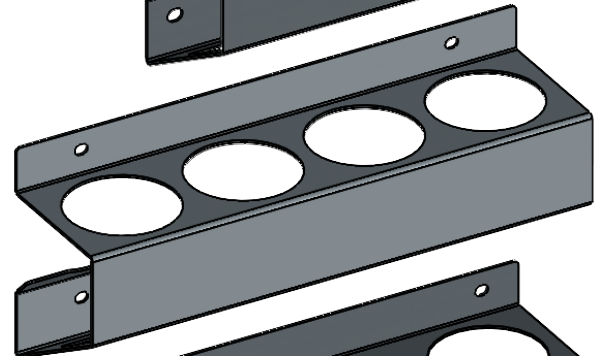
**ACH2-5**



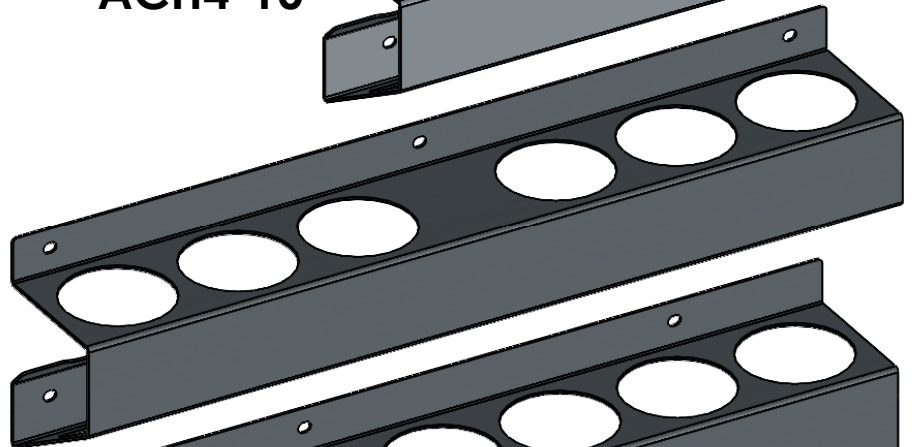
**ACH3-8**



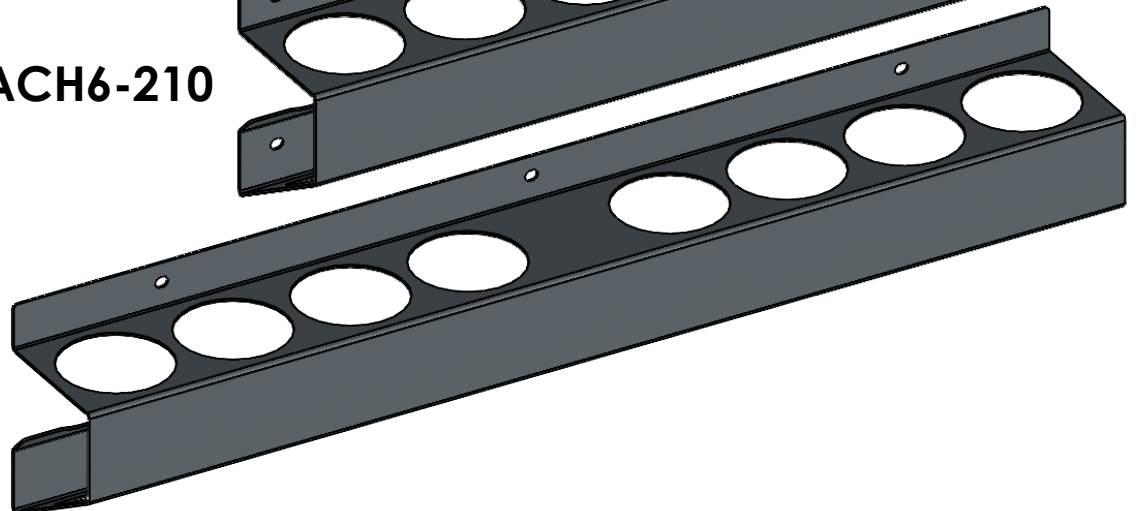
**ACH4-10**



**ACH6-210**



**ACH8-210**



### PRODUCT FEATURES

THESE ACCESSORIES ATTACH TO ANY FLAT SURFACE. MOUNTING HARDWARE IS INCLUDED. THEY HOLD VARIOUS SIZE AEROSOL CANS UNDER 2.85" IN DIAMETER.

ACH3-8 ATTACHES SPECIFICALLY TO SHELVING END PANELS. MOUNTING HARDWARE IS INCLUDED. THIS IS COMPATIBLE WITH ALL PROFILE SERIES SHELVING UNITS.