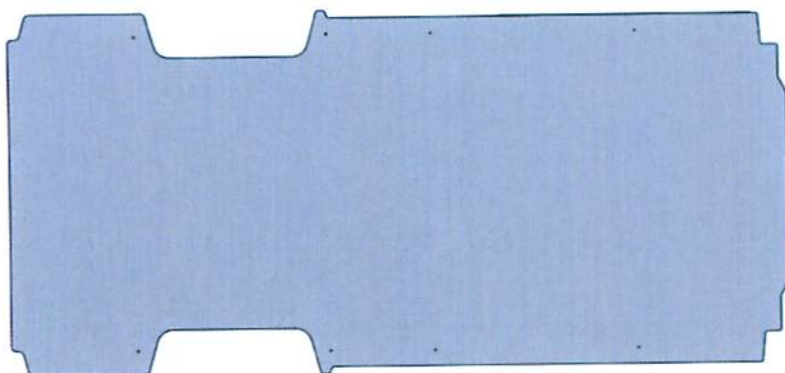




## Floor Mat 88-159EXPM

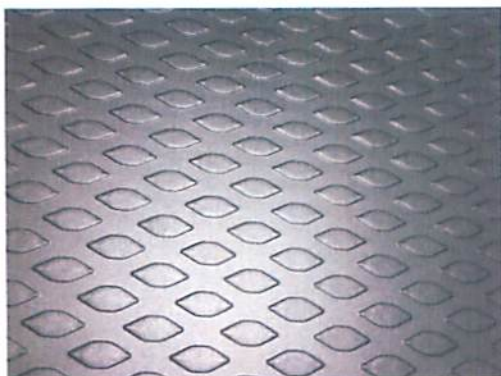


PRODUCT WEIGHT  
**48 LBS**

WIDTH x DEPTH x HEIGHT  
**71.9"x.160"x156.75"**

CAPACITY  
**N/A**

COLOR  
**BLACK**



CATALOG NUMBER  
**88-159EXPM**

### PRODUCT FEATURES

This Workmat is for a Extended Promaster. The rubber diamond tread provides better traction for the floor of your vehicle. It also provides a protective surface for the vehicle. Also comes with an edge kit.

Thickness: 5/32

SEE PAGE 2 FOR APPLICATION NOTES AND ACCESSORIES, OTHER PRODUCTS THAT WORK WITH THIS UNIT.





**CATALOG NUMBER      88-159EXPM**

***PRODUCT APPLICATION***

**This product is designed to fit within the vehicles base around the wheel wells and pillars.**

***ACCESSORIES THAT WILL WORK WITH THIS PRODUCT***

<b>CATALOG NUMBER</b>	<b>DESCRIPTION</b>
-----------------------	--------------------

***SPECIAL APPLICATION NOTES***

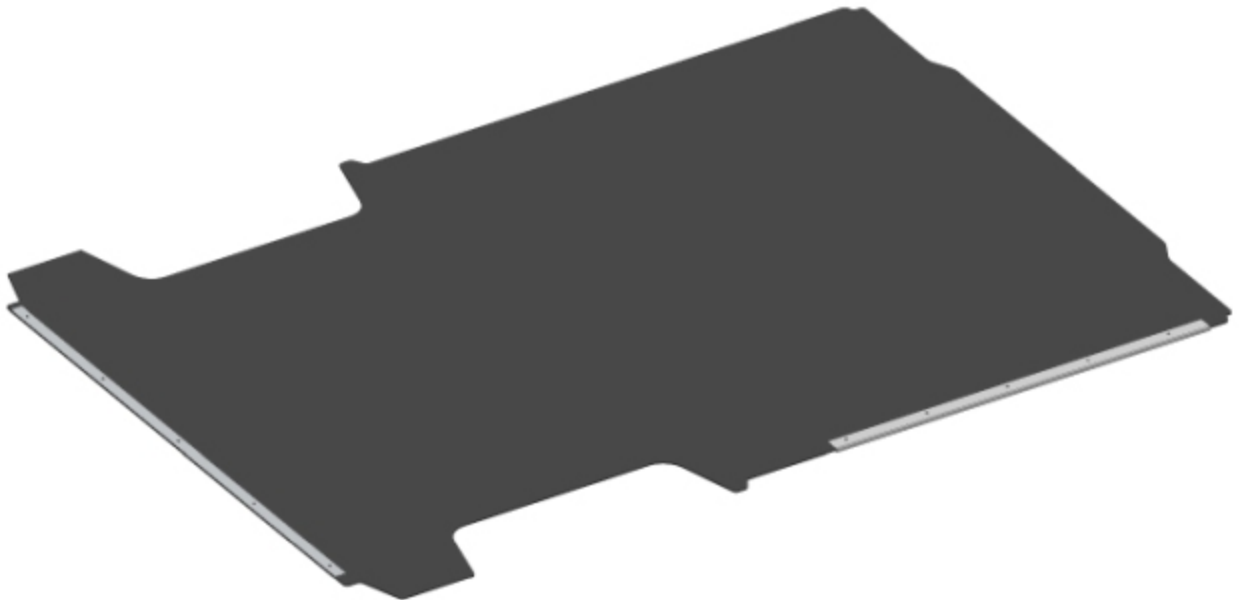


**Introduction / Comments:**

This edge kit is designed to fit in your 136 wheel base Promaster vehicle with work mat(88-PM136), standard and high roof use the same kit. This edge kit can also be used for the 118" wheel base with modification to sliding door edge piece.

**Note:**

It is advised that all fasteners used in this assembly and installation should be checked for tightness at the following intervals: @ 2-weeks and again @ 6-weeks of operation. This preventive maintenance step must be completed to ensure your Partition gives you long service life.



**46325  
EDGE KIT FOR PRO-  
MASTER WORKMAT**



## - PRECAUTIONS -





 **CAUTION**   
**THE USE OF AIR IMPACT TOOLS CAN  
OVER-TORQUE FASTENERS AND  
CAUSE FASTENER FAILURE!**





 **CAUTION**   
**ALL INSTALLATION HOLES SHOULD BE SEALED  
WITH SILICON OR BUTYL SEALANT TO PREVENT  
EXHAUST FUMES FROM ENTERING THE VEHICLE!**



 **DANGER**   
**INSPECT FOR FUEL TANK, FUEL LINES, BRAKE LINES, HIGH  
VOLTAGE BATTERIES AND ELECTRICAL LINES PRIOR TO  
DRILLING TO AVOID DAMAGING CRITICAL VEHICLE SYSTEMS  
OR INJURY TO INSTALLER DURING INSTALLATION PROCESS!**



 **CAUTION**   
**TO AVOID DAMAGING THE VEHICLE ALWAYS  
USE DRILL STOPS WHEN DRILLING ANY IN-  
STALLATION HOLES!**



## - IMPORTANT WARRANTY REQUIREMENTS -

1. **SUBSTITUTING ADRIAN STEEL SPECIFIED FASTENERS FOR ASSEMBLY AND/OR INSTALLATION WILL VOID YOUR PRODUCT WARRANTY.**
2. **ALL HOLES DRILLED INTO VEHICLE SHOULD HAVE THE RAW METAL EDGES SEALED WITH A SELF-ETCHING PRIMER TO RESIST CORROSION AND POTENTIAL FASTENER POINT FAILURE.**
3. **ALL FASTENERS USED IN THE INSTALLATION OF THIS PRODUCT SHOULD BE TIGHTENED TO THE TORQUE(S) SPECIFIED IN THESE INSTRUCTIONS.**
4. **THESE INSTRUCTIONS SHOULD BE KEPT WITH THE VEHICLE.**

### THE BASIC TOOLS NEEDED FOR MOST INSTALLATIONS



DRILL

DRILL BIT WITH  
STOPRATCHET, SOCKETS  
AND/OR WRENCHES

SCREWDRIVERS

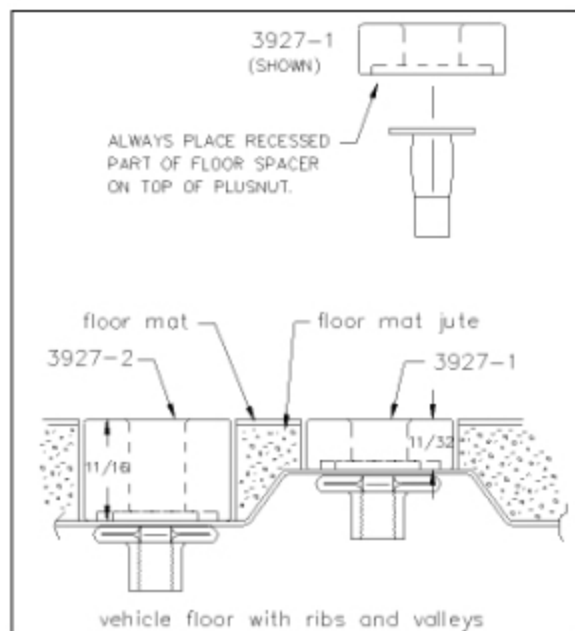


MEASURING TAPE

ADDITIONAL TOOLS MAY BE NEEDED FOR THIS INSTALLATION AND THEY WILL BE IDENTIFIED IN THE STEPS THAT FOLLOW.



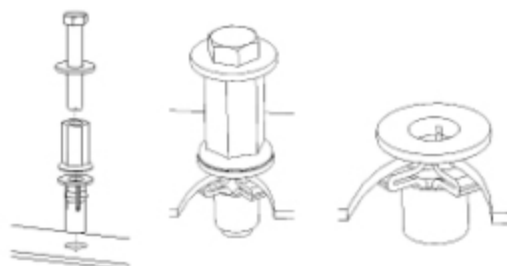
If your vehicle contains carpet or a rubber floor mat you will need to prepare the mounting location. Position the product to be installed into the vehicle and once you are satisfied with the mounting locations, mark the mounting locations. Using a 1-3/16" diameter carpet cutter (P/N: 31183-0). Select the appropriate floor spacers as shown in the illustration. Set those aside for use later into the installation process. Using the correct drill bit size for the selected plusnut, drill the mounting holes in the vehicle sheet metal to prepare for installing the plusnuts. If you are thru-bolting at any of the locations simply drill a hole that is 1/16" larger than the bolt size(s) for those locations. Once you have drilled the holes into the vehicle, the raw metal edges should be sealed using a self-etching primer to resist corrosion and potential fastener point failure.



A PLUSNUT (RIVNUT) SETTING TOOL IS REQUIRED FOR PLUSNUT (RIVNUT) INSTALLATION AND IS SUPPLIED WITH THIS KIT. OR USE AN AIR POWERED PLUSNUT SETTING GUN.

1/4-20UNC Plusnut (FAS0052) Use 3/8" dia. drill w/stop  
FAS0080 SCREW, HXHD, 1/4-20UNCx2.00", G8  
FAS0067 WASHER, FLAT, 1/4"ID  
22200-0 PLUSNUT TOOL

5/16-18UNC Plusnut (FAS0091) Use 1/2" dia. drill w/stop  
FAS0095 SCREW, HXHD, 5/16-18UNCx2.00", G8  
FAS0086 WASHER, FLAT, 5/16"ID  
22200-0 PLUSNUT TOOL

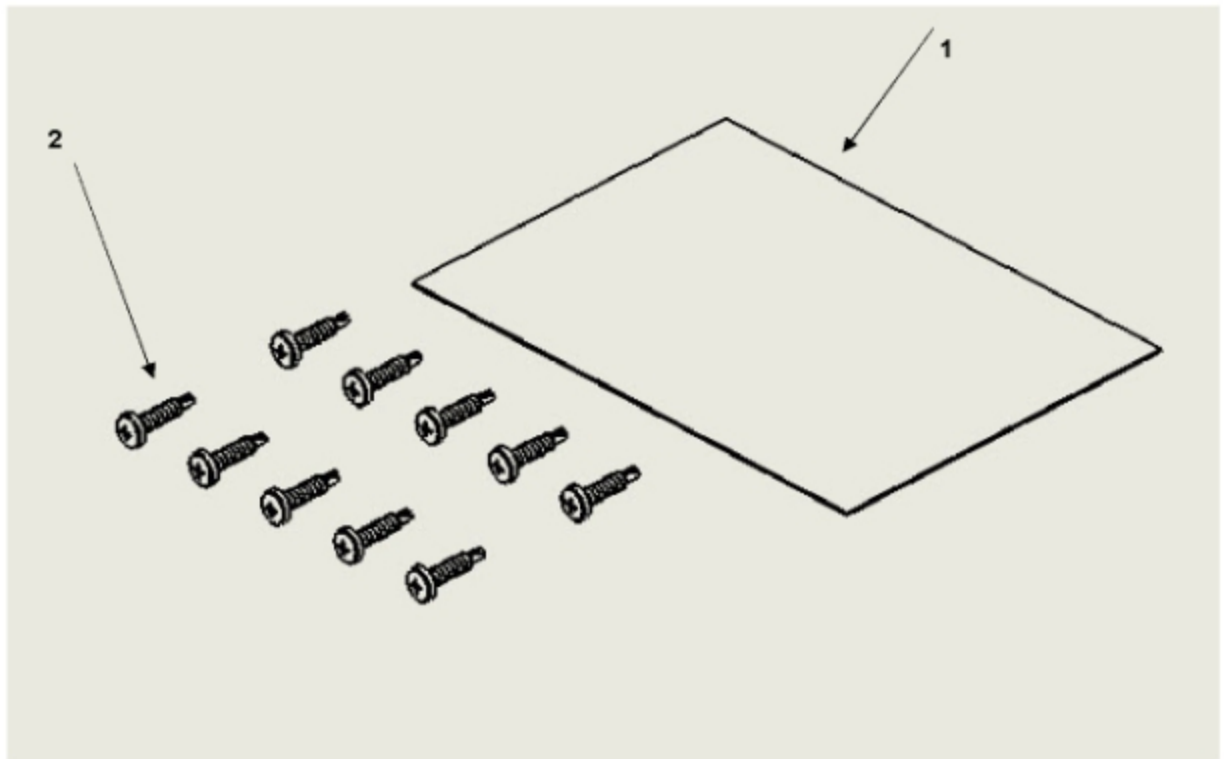


Place barrel of the plusnut body in sheet metal thru hole until flange is flush with sheet metal. Using a 9/16" combination wrench of plusnut tool body and a second hand wrench, ratchet, or air tool, rotate the hex bolt head CW to draw plus nut flanges up (set the plusnut).



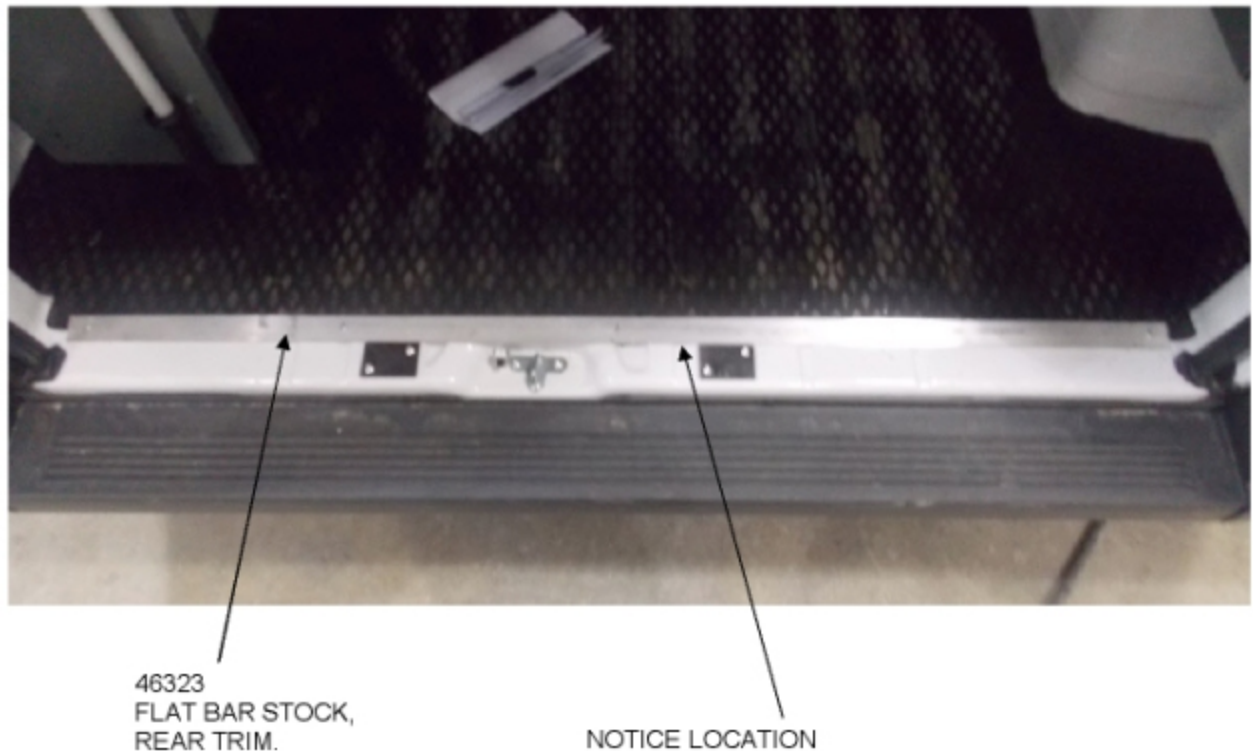
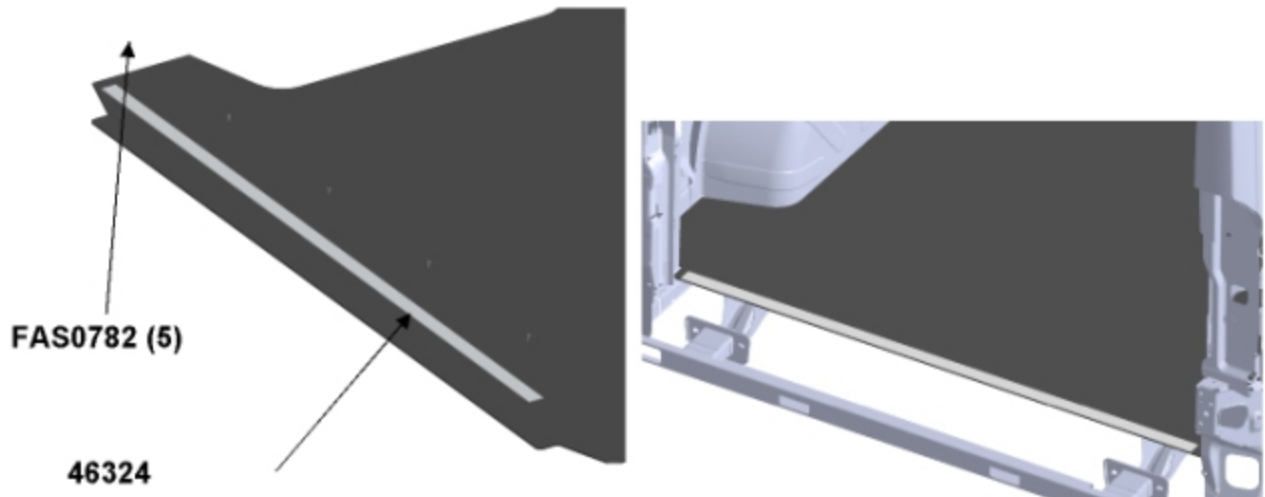
# Assembly and Installation Fastener Identification Sheet ( BAG46325 )

ITEM NO.	PART NUMBER	DESCRIPTION	BAG46325/QTY.
1	BAG0406-A	4" x 6" 3MIL AUTOBAG	1
2	FAS0762	SCREW THRD ST 8X 62	10



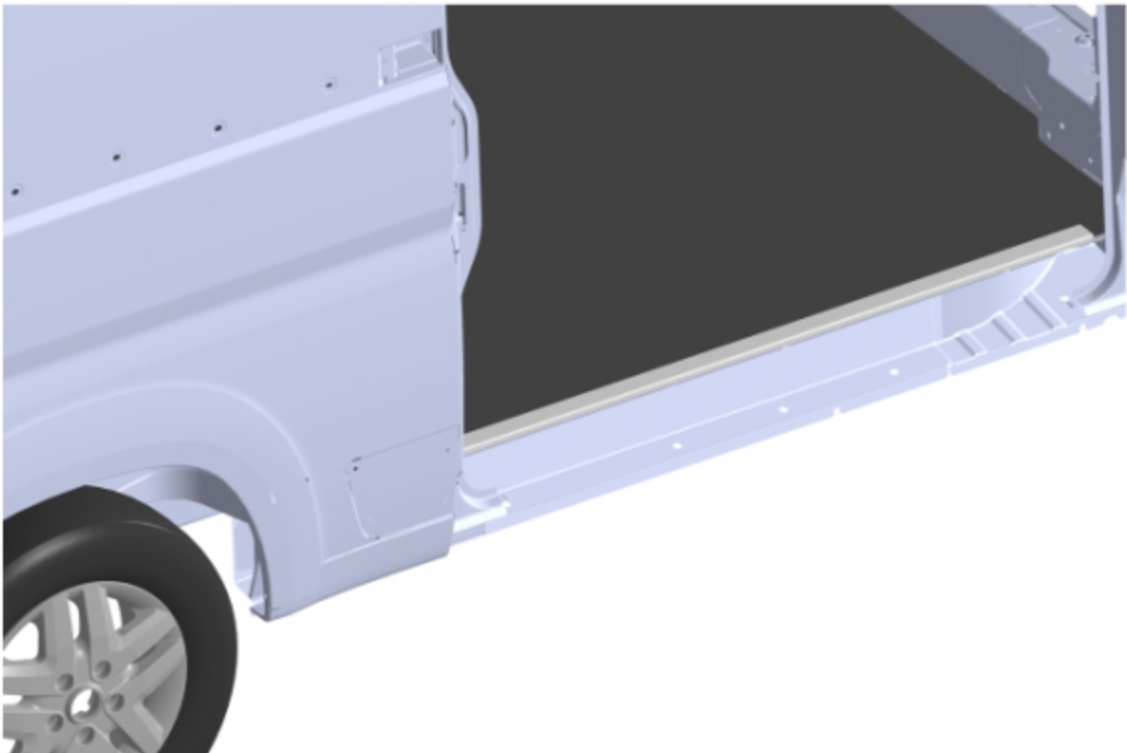
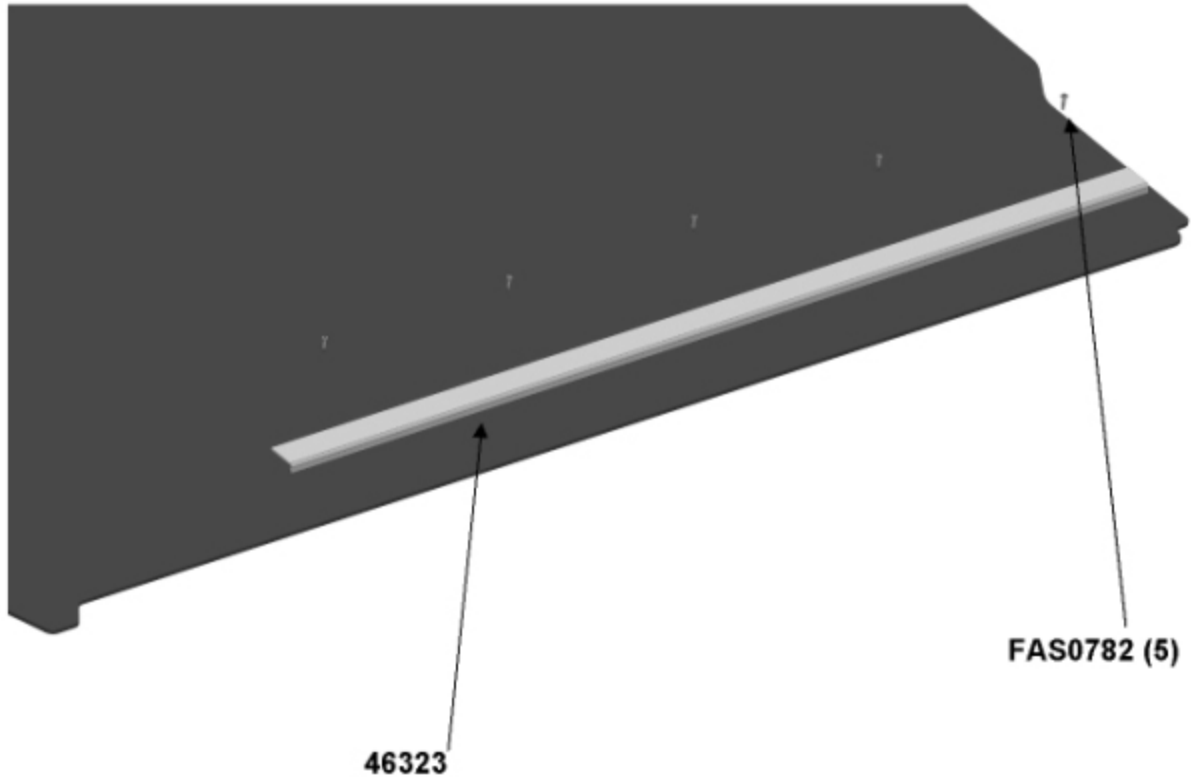


**STEP 1 AFTER MAT IS IN POSITION, PLACE RAILS OVER EDGE OF FLOOR MAT, ATTACH WITH FAS0782 (5 EA TRIM PC), ATTACH REAR. NEXT PAGE SHOWS SIDE DOOR.**





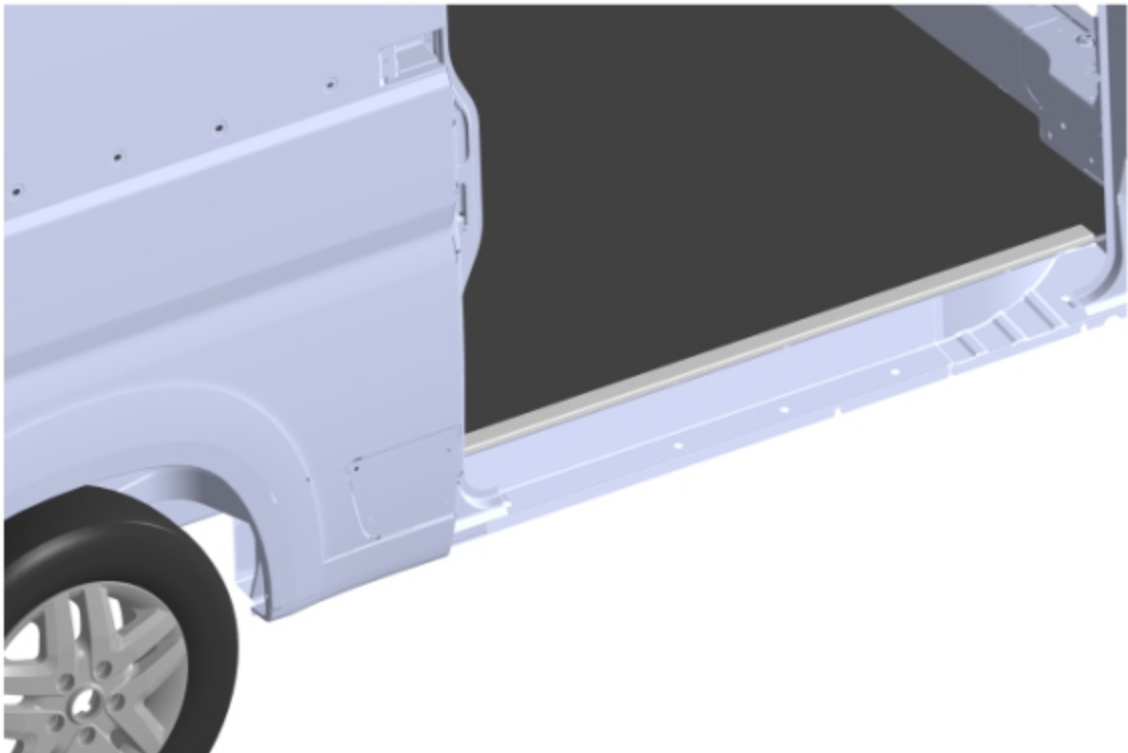
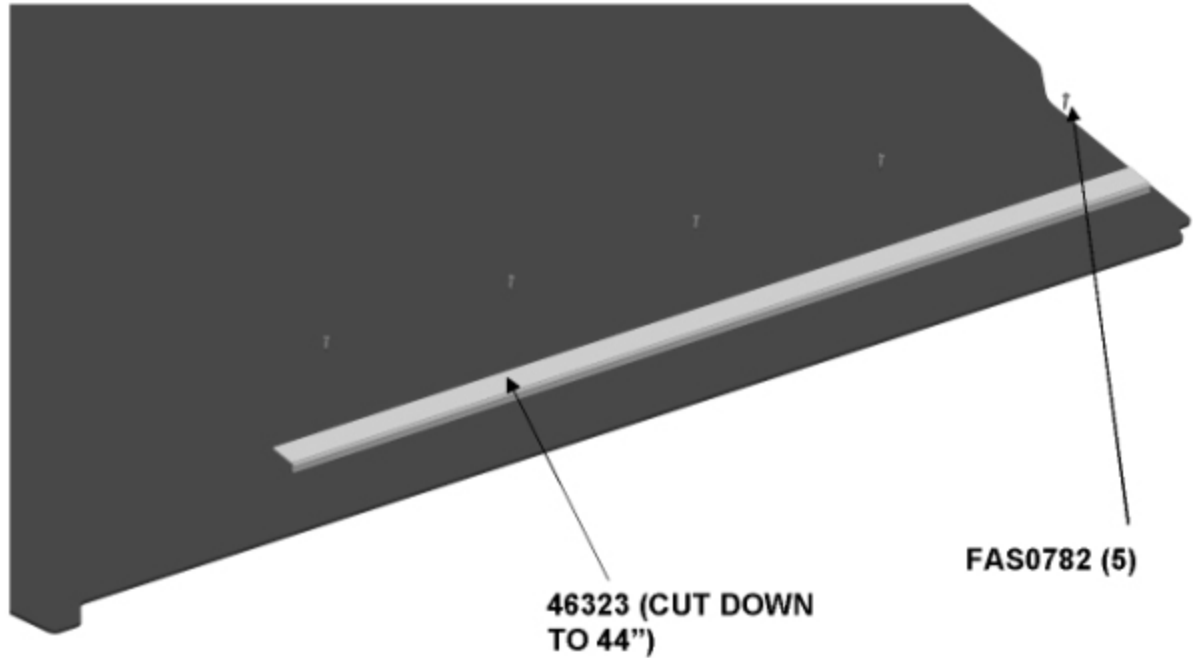
## STEP 1B INSTALL DOOR OPENING DEGE TRIM





## STEP 1B (118" WHEEL BASE MODIFICATION- INSTALL DOOR OPENING DEGE TRIM

CUT 46323 DOWN TO 44" TO FIT IN THE SLIDING DOOR.





## YOUR INSTALLATION IS NOW COMPLETE

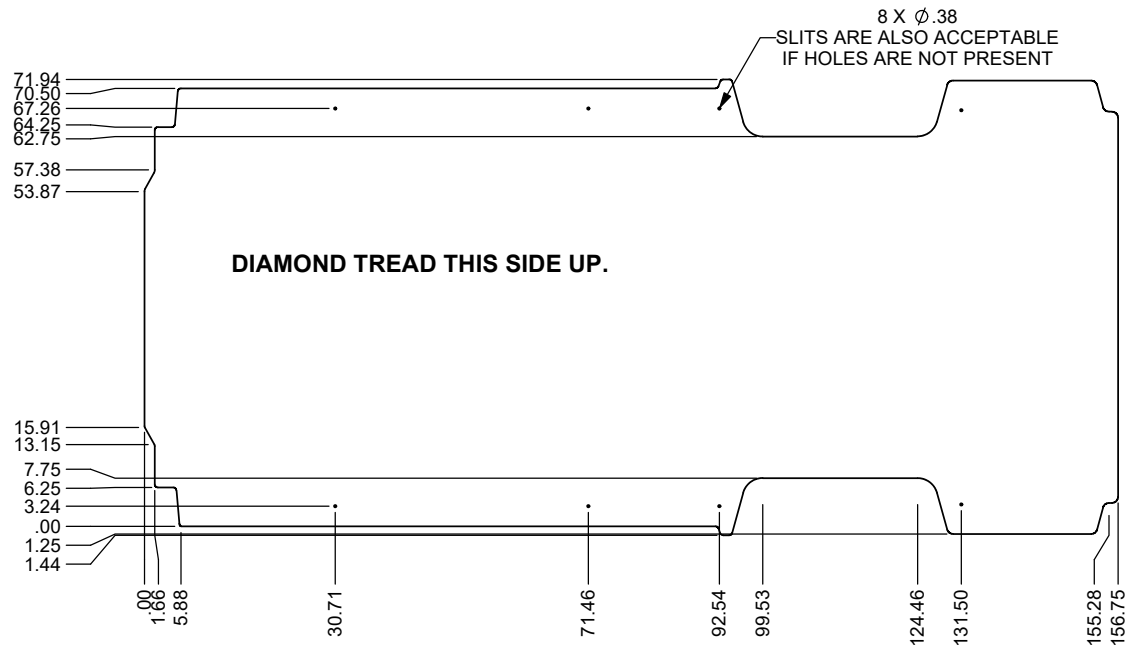


**DOUBLE CHECK ALL FASTENERS LOCATIONS TO BE SURE THAT ALL  
FASTENERS ARE TIGHTENED TO SPECIFICATIONS.  
YOUR INSTALLATION IS NOW COMPLETE!  
STOW THIS COPY IN THE VEHICLE FOR FUTURE REFERENCES!**



<b>PURCHASED COMPONENT KEY FEATURES</b>
<b>DESCRIPTION OF REQUIREMENTS</b>
DIMENSIONAL REQUIREMENTS (AS SHOWN ON DRAWING) <b>SEE TABLE</b>
LOAD/RATING REQUIREMENT <b>N/A</b>
MATERIAL REQUIREMENT <b>SEE TABLE</b>
PACKAGING REQUIREMENT <b>SEE TABLE</b>
OTHER REQUIREMENTS <b>N/A</b>

MATERIAL TYPE	RUBBER
MATERIAL THICKNESS	0.16"
OVERALL DIMENSIONS (L X W)	71.90" X 156.75"
SURFACE PATTERN	DIAMOND
SUPPLIER PART#	D74157-AS
COLOR	BLACK
VEHICLE APPLICATION	PROMASTER 159" EXT WB
FMVSS COMPLIANCE	302
PACKAGING	BOX



THIS DRAWING IS THE PROPERTY OF ADRIAN STEEL COMPANY AND IS NOT TO BE USED IN ANY MANNER  
DETRIMENTAL TO THE INTERESTS OF ADRIAN STEEL COMPANY

## RELEASE & REVISIONS


INITIAL ECN:	<b>16222</b>
CURRENT ECN:	<b>24392</b>
ECN DESCRIPTION:	
<b>UPDATE PPDS AND ADD SPECIFICATIONS BLOCK</b>	
REVISED BY: <b>BCB</b>	

<b>PURCHASED COMPONENT</b>
REFERENCED SUPPLIER AND/OR MANUFACTURER <b>EAGLE INDUSTRIES</b>
REFERENCED SUPPLIER AND/OR MANUFACTURER PART NUMBER <b>D74157-AS</b>
COLOR (ONLY LIST IF COLOR SPECIFIC) <b>BLACK</b>
COMMODITY ITEM (Y/N) (YES = ALL DIMENSIONS AND NOTES ARE REFERENCE) (NOTE: DIMENSIONS AND FEATURES MAY VARY FOR A COMMODITY ITEM.) <b>NO</b>

PRINTED DOCUMENT IS UNCONTROLLED

Sheet 1 of 1

[illegible]

 <b>ADRIAN STEEL®</b>		ADRIAN STEEL COMPANY 906 JAMES STREET, ADRIAN, MI 49221		REVISION LEVEL  <b>B</b>	
MAT'L USED:			DESIGNED BY: <b>BDH</b>		
DESCRIPTION: <b>WORKMAT, 159 EX PM</b>					
WEIGHT (Lbs.): <b>50.00</b>		SEGMENT CODE: <b>FLR</b>		PART NUMBER: <b>46786</b>	