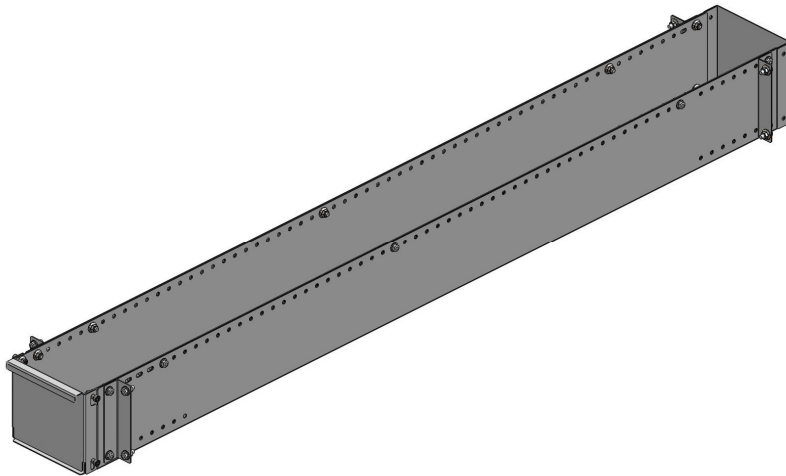


CONDUIT KIT FOR 16" SHELVING



PRODUCT WEIGHT
45 LBS

WIDTH x DEPTH x HEIGHT
64.9-123.5" x 9.1" x 6.1"

CAPACITY
**100 LBS EVENLY
SPACED**

COLOR

GRAY

CATALOG NUMBER

80-FSV

PRODUCT FEATURES

Adjustable conduit kit for 16" shelving units. This conduit kit can extend across multiple shelving units. Has door for easy loading and unloading of components. Mounting flanges can be placed on the inside or outside of the shelving units end panels depending on desired length.

SEE PAGE 2 FOR APPLICATION NOTES AND ACCESSORIES, OTHER PRODUCTS THAT WORK WITH THIS UNIT.



CATALOG NUMBER 80-FSV

PRODUCT APPLICATION

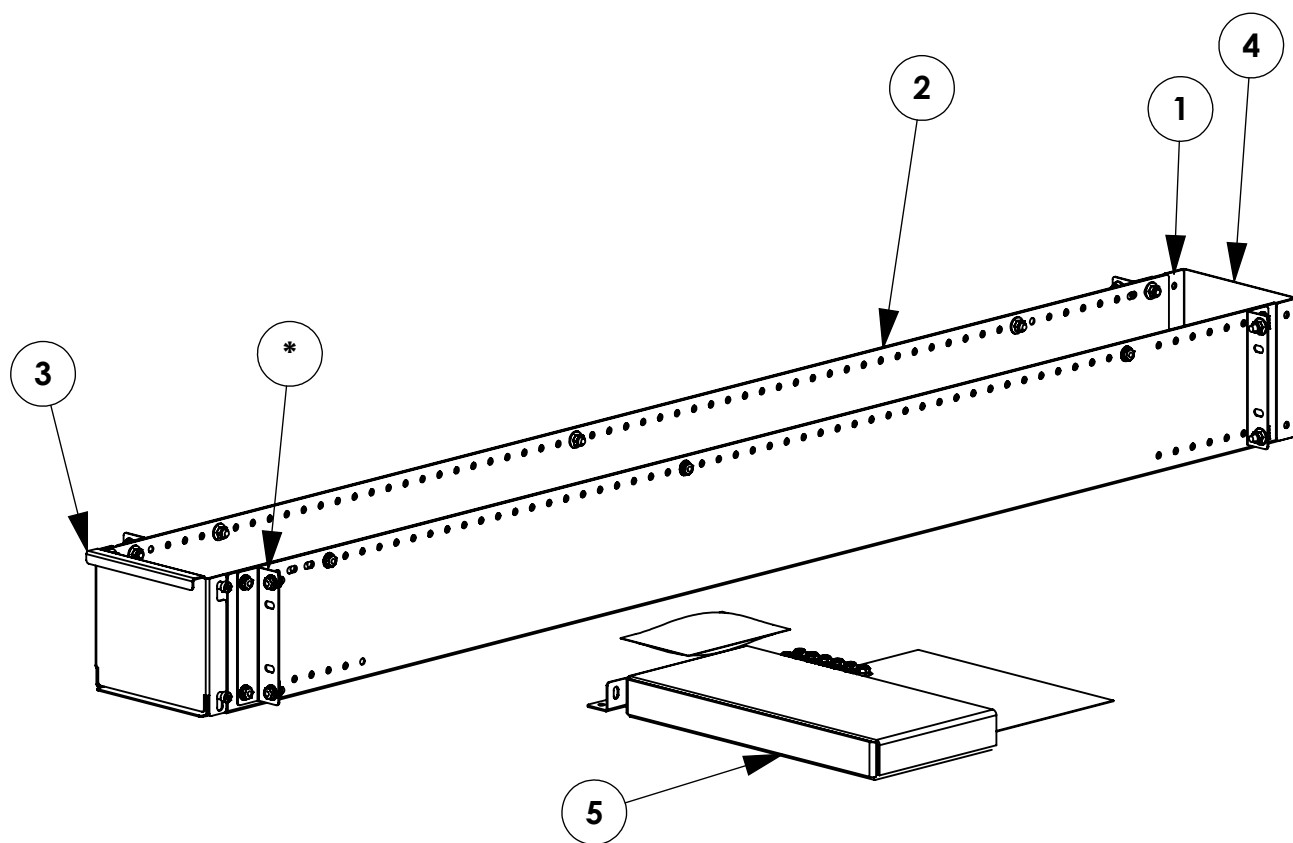
This product is designed to be installed on 16" shelving units.

ACCESSORIES THAT WILL WORK WITH THIS PRODUCT

CATALOG NUMBER	DESCRIPTION
-----------------------	--------------------

SPECIAL APPLICATION NOTES

<i>INSTR. NUMBER</i> : 66979 <i>PART NUMBER</i> : 80-FSV <i>PART DESC.</i> : SHELVING CONDUIT KIT	<i>PG:</i> 1	<i>REV:</i> B	<i>ITEM NO.</i>	<i>PART NUMBER</i>	<i>DESCRIPTION</i>	<i>QTY.</i>
			1	66702-G	SHELVING CONDUIT REAR TRAY, GRAY	1
			2	66701-G	SHELVING CONDUIT FRONT TRAY, GRAY	1
			3	66704-G	SHELVING CONDUIT DOOR, GRAY	1
			4	66705-G	SHELVING CONDUIT END PLATE, GRAY	1
			5	HDW66978	HARDWARE KIT 80-FSV	1



GET TO KNOW THE VEHICLE - AT THE BEGINNING OF ANY INSTALLATION, CHECK THE LOCATION OF THE FUEL TANK, FUEL LINES, BRAKE LINES, HIGH VOLTAGE BATTERIES AND WIRING HARNESSSES TO AVOID INJURY OR PROPERTY DAMAGE FROM TOOL CONTACT.

SEAL ALL EXTERIOR HOLES - ALL INSTALLATION HOLES SHOULD BE SEALED WITH BUTYL TAPE OR SILICON TO PREVENT WATER AND EXHAUST GASES FROM ENTERING THE VEHICLE.

CONTROL DRILL DEPTH - TO AVOID DAMAGE TO THE VEHICLE, USE A DRILL STOP OR CLEARED STEP BIT WHEN DRILLING INSTALLATION HOLES.

ALWAYS ADD PRIMER - WHEN ADDING INSTALLATION HOLES BE SURE TO USE A SELF-ETCHING PRIMER TO PREVENT CORROSION, FASTENER FAILURE AND INJURY.

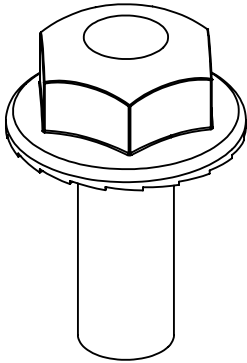
MOUNTING POINTS MUST HAVE METAL-TO-METAL CONTACT - USE PROVIDED MOUNTING SPACERS TO ACCOMMODATE FOR VEHICLE FEATURES, CARPET OR SUBFLOORS.

PROVIDE CLEARANCE FOR SPACERS - IF THE INSTALLATION VEHICLE CONTAINS A CARPET OR SUBFLOOR, USE A 1-3/16" DIAMETER CARPET CUTTER (P/N: 31183-0) AT ALL MOUNTING LOCATIONS TO OPEN UP ROOM FOR SPACERS.

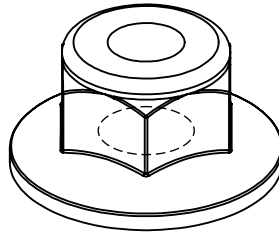
CHECK SPACER ORIENTATION - BE SURE THAT THE INDENT IN THE SPACER COVERS THE PLUSNUT HEAD; THIS ENSURES THE MOST METAL-TO-METAL CONTACT AND REDUCES VIBRATION.

PLUSNUT INSTALLATION - A PLUSNUT GUN IS RECOMMENDED FOR PLUSNUT INSTALLATION FOR ITS PRODUCTION SPEED. HOWEVER, A PLUSNUT SETTING TOOL CAN ALSO BE USED (P/N: 22200-0).

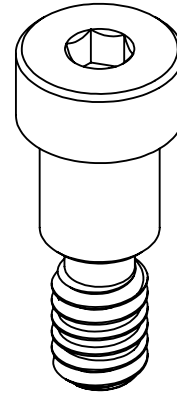
THRU-BOLT CLEARANCE - WHEN USING A THRU-BOLT AT ANY MOUNTING LOCATION, BE SURE THAT YOUR HOLE HAS 1/16" CLEARANCE.

FASTENERS USED

FAS0018
SCREW, HH SFLNG
1/4-20X.62 ZP
QTY: 22



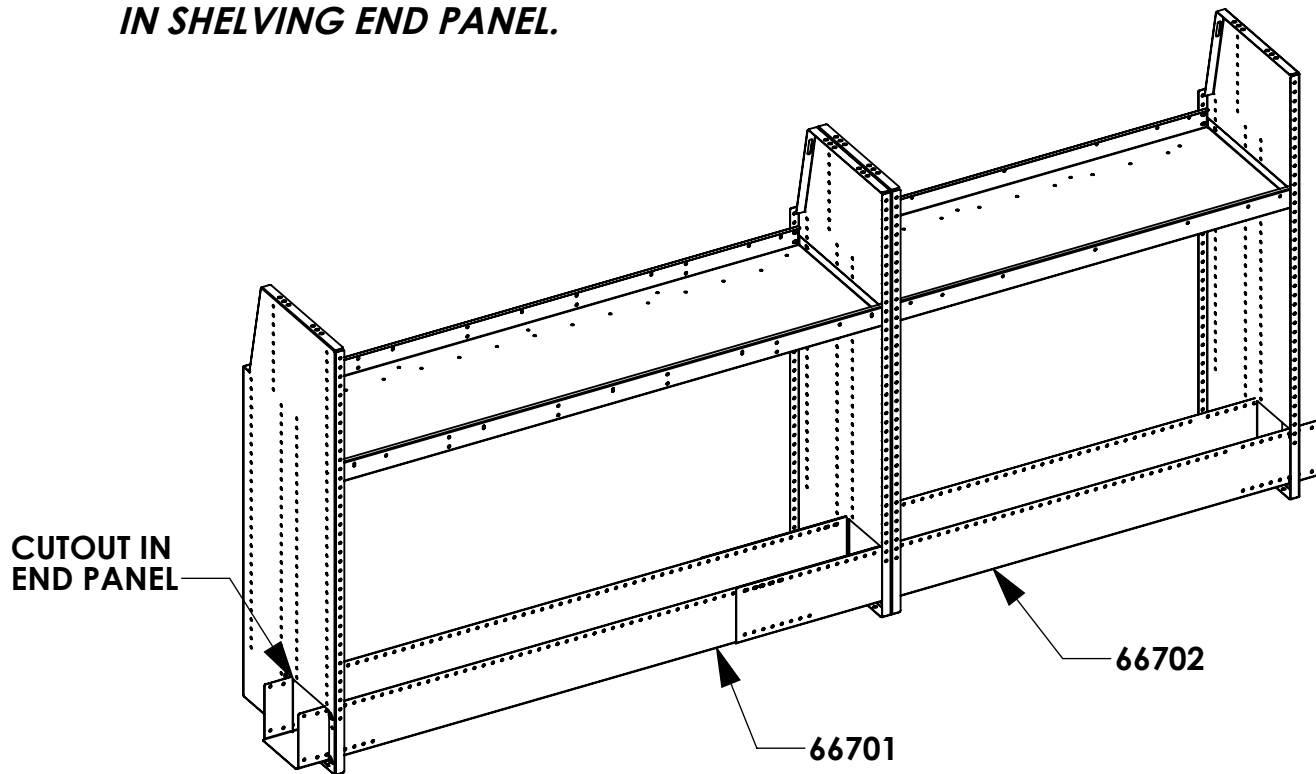
FAS0055
NUT, HEX NLK
FLG 1/4-20 ZP
QTY: 26



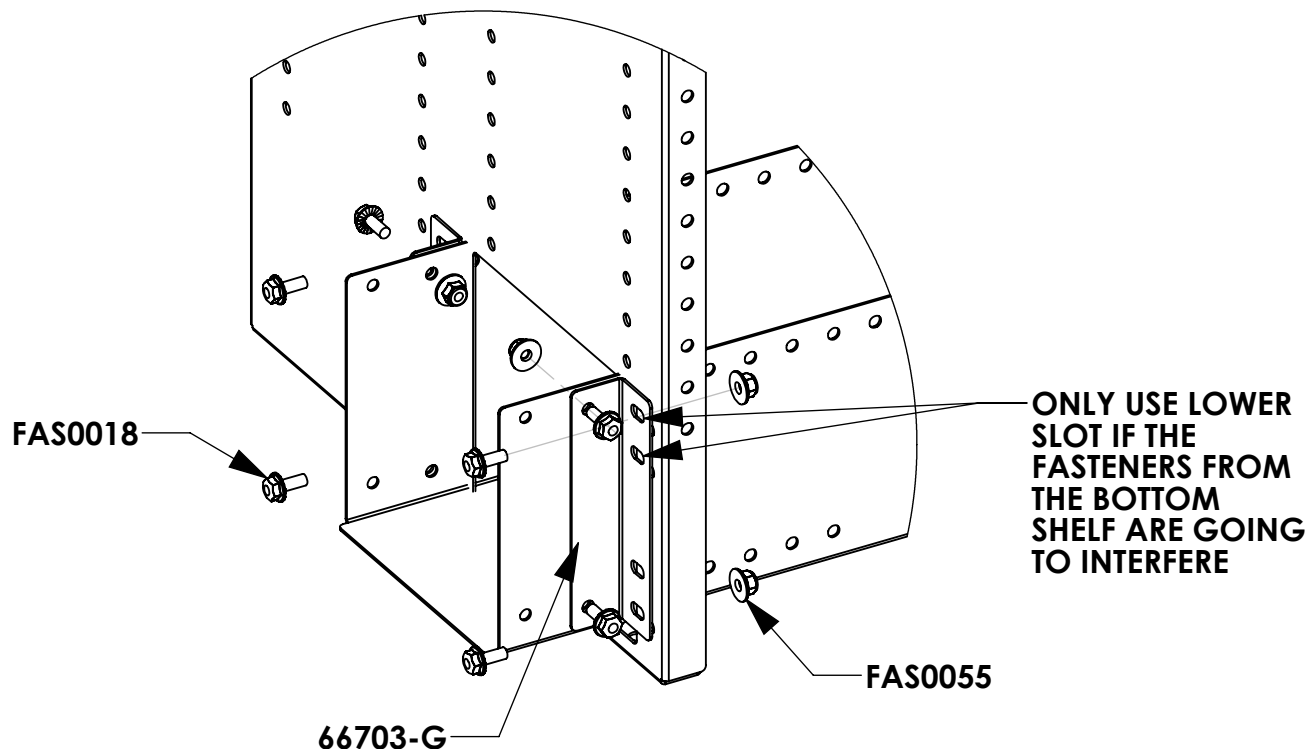
FAS0089
SCREW, SHLDR
.312 X .37 NYLK
QTY: 4

BEGIN ASSEMBLY

STEP 1 - SLIDE CONDUIT TRAYS (66701-G & 66702-G) THROUGH CUTOUTS IN SHELVING END PANEL.

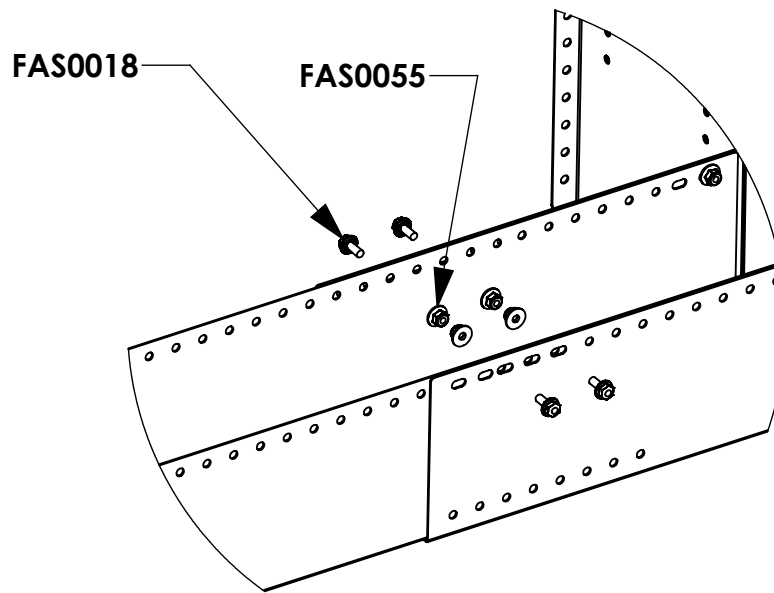


STEP 2 - ONCE IN POSITION FASTEN THE 4 CONDUIT TRY BRACKETS (66703-G) TO THE CONDUIT TRAYS AND END PANELS USING FAS0018 & FAS0055.



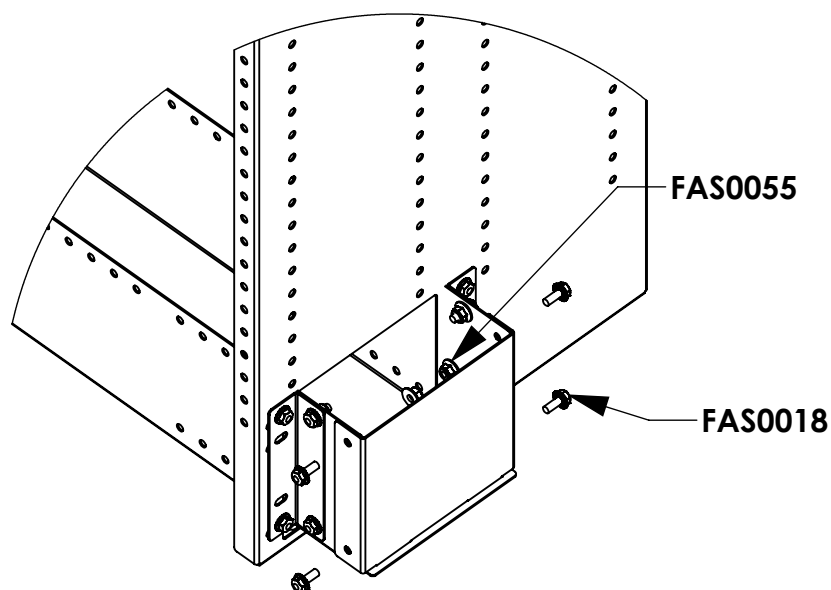
DETAIL AE
SCALE 1 : 4

STEP 3 - LOCATE OVERLAPPING HOLES/SLOTS ON THE TOP EDGES OF THE CONDUIT TRAY. FASTEN THE TRAYS TOGETHER ON BOTH SIDES USING FAS0018 & FAS0055



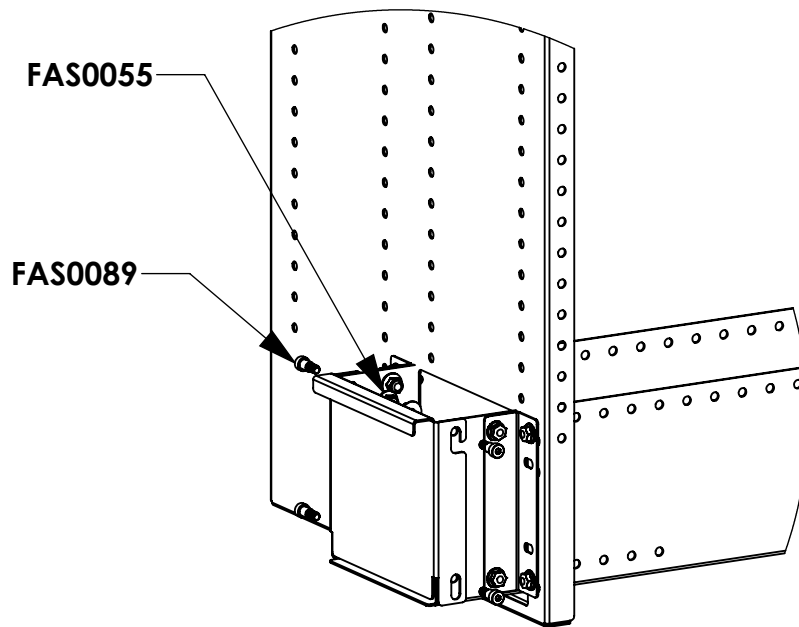
DETAIL AD
SCALE 1 : 6

STEP 4 - INSTALL THE CONDUIT TRAY END PLATE BY SLIDING THE TABS INTO THE SHOWN SLOTS. FASTEN THE PLATE TO THE CONDUIT TRAY (66702-G) USING FAS0018 & FAS0055



DETAIL AC
SCALE 1 : 6

STEP 5 - INSTALL THE CONDUIT TRAY DOOR (66705-G) BY ALIGNING THE SLOTS OVER THE HOLES AS SHOWN. FASTEN THE TRAY AT ALL 4 POINTS USING FAS0055 & FAS0089



DETAIL A
SCALE 1 : 6

