

PART NUMBER

13905-0

ITEM DESCRIPTION: WIRE TIE, NYLON 40Lb, 8.5" BLACK



MANUFACTURER: WAYTEK, INC. or equivalent
MANUFACTURERS PART NUMBER: 21093M or 21093C

SPECIFICATIONS: STANDARD CABLE TIE
 BLACK, NYLON
 8-1/2" LONG
 TENSILE STRENGTH: 40.0 LBS
 21093M = 1,000 quantity
 21093C = 100 quantity

SPECIAL NOTES: PART NUMBER IS BLACK.

SUPPLIED BY: THIS ITEM IS ADRIAN AVAILABLE!

PURCHASED PRODUCT DATA SHEET (PPDS)

THIS DRAWING/INFORMATION IS THE PROPERTY OF ADRIAN STEEL COMPANY AND IS NOT TO BE USED IN ANY MANNER THAT IS DETRIMENTAL TO THE INTEREST OF ADRIAN STEEL. COPYRIGHTS AND OR PATENTS THAT MAY BE THE PROPERTY OF APPLICABLE OWNERS MAY PROTECT INFORMATION AND/OR DRAWINGS OF SUPPLIED PRODUCTS.



ADRIAN STEEL
VAN AND PICKUP EQUIPMENT

906 JAMES STREET
ADRIAN, MI 49221
517-265-6194
WWW.ADRIANSTEEL.COM



WHEN INSTALLING EQUIPMENT IN OR ON VEHICLES CHECK FOR FUEL TANKS, FUEL LINES, CONTROL LINES AND ELECTRICAL WIRING BEFORE DRILLING! ALWAYS USE DRILL BITS WITH INTEGRAL STOPS WHENEVER POSSIBLE!

DRAWN BY
MDG

DATE DRAWN
10/26/2006

ECN NUMBER
18021

ECN DATE
11/13/2015

PART WEIGHT
0.01 LBS.

REV. LEVEL
D

PART NUMBER
13905-0

PART NUMBER

26618-0

ITEM DESCRIPTION: SILICONE, 1oz. TUBE



SPECIFICATIONS: SU5005 RTV SILICONE
1oz. TUBE
CLEAR OR EQUIVALENT
SELF PIERCING CAP

SPECIAL NOTES:

SUPPLIED BY: THIS ITEM IS ADRIAN AVAILABLE!

PURCHASED PRODUCT DATA SHEET (PPDS)

THIS DRAWING/INFORMATION IS THE PROPERTY OF ADRIAN STEEL COMPANY AND IS NOT TO BE USED IN ANY MANNER THAT IS DETRIMENTAL TO THE INTEREST OF ADRIAN STEEL. COPYRIGHTS AND OR PATENTS THAT MAY BE THE PROPERTY OF APPLICABLE OWNERS MAY PROTECT INFORMATION AND/OR DRAWINGS OF SUPPLIED PRODUCTS.



ADRIAN STEEL
VAN AND PICKUP EQUIPMENT

906 JAMES STREET
ADRIAN, MI 49221
517-265-6194

WWW.ADRIANSTEEL.COM

! CAUTION !

WHEN INSTALLING EQUIPMENT IN OR ON VEHICLES CHECK FOR FUEL TANKS, FUEL LINES, CONTROL LINES AND ELECTRICAL WIRING BEFORE DRILLING! ALWAYS USE DRILL BITS WITH INTEGRAL STOPS WHENEVER POSSIBLE!

DRAWN BY
JLC

DATE DRAWN
7/21/2001

ECN NUMBER
16551

ECN DATE
7/22/2014

PART WEIGHT
0.02 LBS.

REV. LEVEL
C

PART NUMBER
26618-0

PART NUMBER

26618-0

ITEM DESCRIPTION: SILICONE, 1oz. TUBE



SPECIFICATIONS: SU5005 RTV SILICONE
1oz. TUBE
CLEAR OR EQUIVALENT
SELF PIERCING CAP

SPECIAL NOTES:

SUPPLIED BY: THIS ITEM IS ADRIAN AVAILABLE!

PURCHASED PRODUCT DATA SHEET (PPDS)

THIS DRAWING/INFORMATION IS THE PROPERTY OF ADRIAN STEEL COMPANY AND IS NOT TO BE USED IN ANY MANNER THAT IS DETRIMENTAL TO THE INTEREST OF ADRIAN STEEL. COPYRIGHTS AND OR PATENTS THAT MAY BE THE PROPERTY OF APPLICABLE OWNERS MAY PROTECT INFORMATION AND/OR DRAWINGS OF SUPPLIED PRODUCTS.



ADRIAN STEEL
VAN AND PICKUP EQUIPMENT

906 JAMES STREET
ADRIAN, MI 49221
517-265-6194

WWW.ADRIANSTEEL.COM

CAUTION

WHEN INSTALLING EQUIPMENT IN OR ON VEHICLES CHECK FOR FUEL TANKS, FUEL LINES, CONTROL LINES AND ELECTRICAL WIRING BEFORE DRILLING! ALWAYS USE DRILL BITS WITH INTEGRAL STOPS WHENEVER POSSIBLE!

DRAWN BY
JLC

DATE DRAWN
7/21/2001

ECN NUMBER
16551

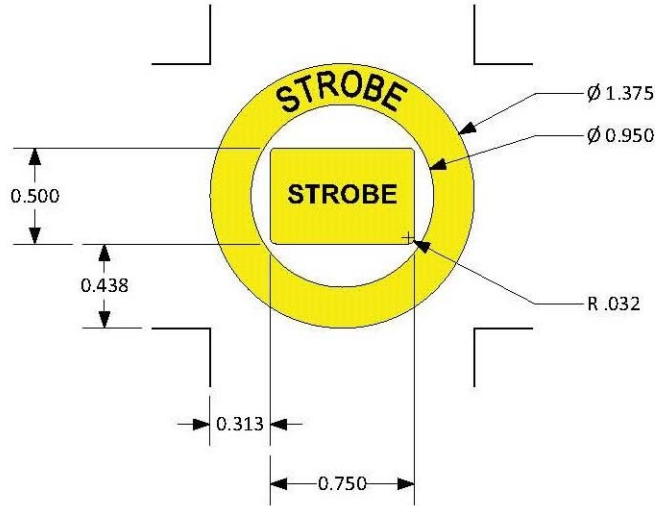
ECN DATE
7/22/2014

PART WEIGHT
0.02 LBS.

REV. LEVEL
C

PART NUMBER
26618-0

ITEM DESCRIPTION: STROBE SWITCH DECAL SET



MANUFACTURER: VANNER
MANUFACTURERS PART NUMBER: TBD

SPECIFICATIONS: (1) Circular Yellow Decal (ID=0.950", OD=1.375") with "STROBE" in black letters
(1) Rectangular Yellow Decal (H=0.500", L=0.750") with "STROBE" in black letters

SPECIAL NOTES: For round rocker switch (OD=0.780") and Ford Transit Upfitter Switches.

SUPPLIED BY: THIS ITEM IS ADRIAN AVAILABLE!

PURCHASED PRODUCT DATA SHEET (PPDS)

THIS DRAWING/INFORMATION IS THE PROPERTY OF ADRIAN STEEL COMPANY AND IS NOT TO BE USED IN ANY MANNER THAT IS DETRIMENTAL TO THE INTEREST OF ADRIAN STEEL. COPYRIGHTS AND OR PATENTS THAT MAY BE THE PROPERTY OF APPLICABLE OWNERS MAY PROTECT INFORMATION AND/OR DRAWINGS OF SUPPLIED PRODUCTS.



**906 JAMES STREET
ADRIAN, MI 49221
517-265-6194
WWW.ADRIANSTEEL.COM**

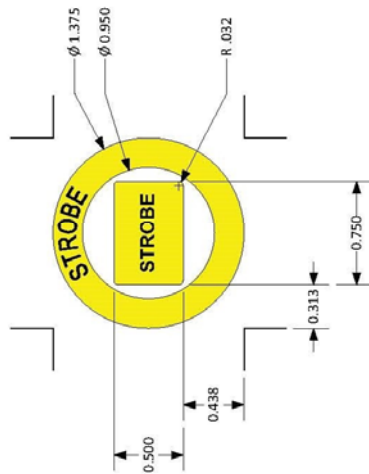


CAUTION
WHEN INSTALLING EQUIPMENT IN OR ON VEHICLES CHECK FOR FUEL TANKS, FUEL LINES, CONTROL LINES AND ELECTRICAL WIRING BEFORE DRILLING! ALWAYS USE DRILL BITS WITH INTEGRAL STOPS WHENEVER POSSIBLE!

| | |
|-----------------------------|--------------------------|
| DRAWN BY RJB | DATE DRAWN 11/15/2017 |
| ECN NUMBER XXXX | ECN DATE XXXXXX |
| PART WEIGHT 0.02 LBS. | REV. LEVEL A |
| PART NUMBER 55073 | |

| REVISIONS | | | |
|-----------|-------------|------|---------|
| REV | DESCRIPTION | DATE | REAE/CO |
| | | | |
| | | | |

- NOTES:
1. MATERIAL : .002 YELLOW POLYESTER
 2. ARTWORK FROM D91XXXX-A PAGE 1, PMS BLACK
 3. .001 OVERLAMINATE
 4. ADHESIVE BACKED



| | |
|---|--|
| VANNER INCORPORATED HILLIARD, OHIO USA | |
| TOL. LABEL/METAL .x ± .025 .xx ± .015 .xxx ± .005 | TITLE: LABEL, STROBE TXT, .95ID ROUND SWITCH |
| TOL. CABLES .xxx ± .25 | DRAWING/ PART NO. D01XXXX |
| DRNDATE MEO 11/14/17 | SHEET 1 OF 1 |
| SCALE: NONE | REAE/CO NO.: XXXX |
| THIS DRAWING AND ALL INFORMATION CONTAINED HEREIN IS THE PROPERTY OF VANNER INC. AND MAY NOT BE COPIED, REPRODUCED OR DIVULGED TO UNAUTHORIZED PERSONS WITHOUT THE EXPRESS WRITTEN CONSENT OF VANNER INC. IT IS PROVIDED SOLELY FOR THE CONVENIENCE OF THE USER AND SHALL BE RETURNED UPON REQUEST. | |

Page 2 of 1

PART NUMBER
55073

THIS DRAWING/INFORMATION IS THE PROPERTY OF ADRIAN STEEL COMPANY AND IS NOT TO BE USED IN ANY MANNER THAT IS DETRIMENTAL TO THE INTEREST OF ADRIAN STEEL. COPYRIGHTS AND OR PATENTS THAT MAY BE THE PROPERTY OF APPLICABLE OWNERS MAY PROTECT INFORMATION AND/OR DRAWINGS OF SUPPLIED PRODUCTS.



906 JAMES STREET
 ADRIAN, MI 49221
 517-265-6194
 WWW.ADRIANSTEEL.COM



WHEN INSTALLING EQUIPMENT IN OR ON VEHICLES CHECK FOR FUEL TANKS, FUEL LINES, CONTROL LINES AND ELECTRICAL WIRING BEFORE DRILLING! ALWAYS USE DRILL BITS WITH INTEGRAL STOPS WHENEVER POSSIBLE!

| | |
|-----------------------------|--------------------------|
| DRAWN BY RJB | DATE DRAWN 11/15/2017 |
| ECN NUMBER XXXX | ECN DATE XXXXXXX |
| PART WEIGHT 0.02 LBS. | REV. LEVEL A |
| PART NUMBER 55073 | |

LOC | QTY | Part # | Description | Size

Material: IJ39 | Lamination: 8518

- 1: 6039597.Strobe Switch-1.52" x 2.07"



Note: Part will not be weeded, just cut.

Kit# 8001872 | Adrian Steel Part # 55073

06/01/2023 • JY
© 2022 DISTYLL Graphics Solutions. All rights reserved.

ASCO REV.1 6/14/2023

| | | | | | |
|-------------------------|--------------|-----------|---------------|--|----------------|
| FINAL DESIGN | CLIENT NAME: | | Switch Decals | | O-ID: O15319-1 |
| | Adrian Steel | | | | Rev #: XXXX |
| | DATE: | DESIGNER: | | | Opt #: A |
| O5/31/2023 | TRN | | | | |

Please check information to confirm accurate vehicle specifications.

CLEANING INSTRUCTIONS All surfaces must be considered contaminated. Clean the vehicle surface immediately before applying the film. Dust and other contaminants can collect quickly on the surface and prevent the film from adhering properly. Even a freshly painted surface can collect dust before graphics can be applied.

For the best success with the films recommended for vehicle graphics, always apply the graphics when the air and vehicle surface are both above 60°F (16°C) and below 90°F (32°C) before beginning the installation.

PURCHASED COMPONENT KEY FEATURES

DESCRIPTION OF REQUIREMENTS

DIMENSIONAL REQUIREMENTS (AS SHOWN ON DRAWING)

N/A

LOAD/RATING REQUIREMENT

N/A

MATERIAL REQUIREMENT

N/A

PACKAGING REQUIREMENT

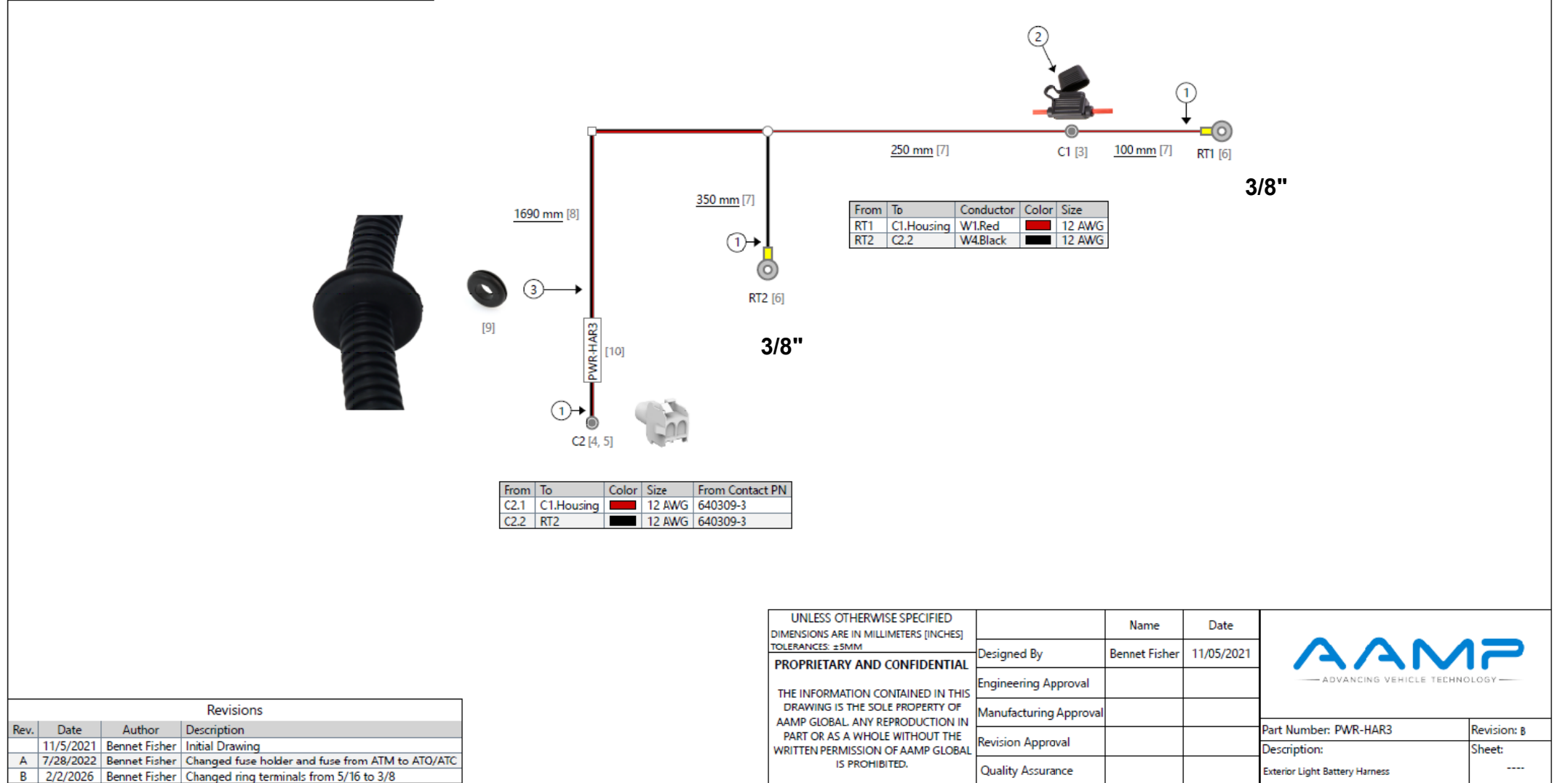
N/A

OTHER REQUIREMENTS

| Bill of Materials | | | | |
|-------------------|-------------------|----------------------|-------------------------|----------|
| Id | Type | Manufacturer | Part Number | Quantity |
| 1 | Wire | | 12 AWG Red GXL | 2040 mm |
| 2 | Wire | | 12 AWG Black GXL | 2040 mm |
| 3 | Fuse Holder | Egis Mobile Electric | 901028 | 1 |
| 4 | Connector | TE Connectivity | 1-480699-0 | 1 |
| 5 | Contact | TE Connectivity | 640309-3 | 2 |
| 6 | Ring Terminal | Molex | 19164-0068 | 2 |
| 7 | Corrugated Tubing | | 0.25" Nylon Split Wall | 700 mm |
| 8 | Corrugated Tubing | | 10mm Nylon Split Wall | 1690 mm |
| 9 | Grommet | | 14mm Grommet | 1 |
| 10 | Label | | Heat Shrink Style Label | 1 |

| Coverings | |
|-----------|----------|
| Id | Assembly |
| [7] | |
| [8] | |

| Notes | |
|-------|---|
| ① | Lock Tape Loom with Tesa 51036 |
| ② | Add 15A ATO/ATC Fuse |
| ③ | Add rubber grommet over harness loom; 150mm behind C2 |



| Revisions | | | |
|-----------|-----------|---------------|--|
| Rev. | Date | Author | Description |
| | 11/5/2021 | Bennet Fisher | Initial Drawing |
| A | 7/28/2022 | Bennet Fisher | Changed fuse holder and fuse from ATM to ATO/ATC |
| B | 2/2/2026 | Bennet Fisher | Changed ring terminals from 5/16 to 3/8 |

| UNLESS OTHERWISE SPECIFIED DIMENSIONS ARE IN MILLIMETERS [INCHES] TOLERANCES: ±5MM | | Name | Date |
|---|------------------------|---------------|------------|
| PROPRIETARY AND CONFIDENTIAL THE INFORMATION CONTAINED IN THIS DRAWING IS THE SOLE PROPERTY OF AAMP GLOBAL. ANY REPRODUCTION IN PART OR AS A WHOLE WITHOUT THE WRITTEN PERMISSION OF AAMP GLOBAL IS PROHIBITED. | Designed By | Bennet Fisher | 11/05/2021 |
| | Engineering Approval | | |
| | Manufacturing Approval | | |
| | Revision Approval | | |
| | Quality Assurance | | |

Part Number: PWR-HAR3 Revision: B
Description: Exterior Light Battery Harness Sheet: ----

THIS DRAWING IS THE PROPERTY OF ADRIAN STEEL COMPANY AND IS NOT TO BE USED IN ANY MANNER DETRIMENTAL TO THE INTERESTS OF ADRIAN STEEL COMPANY

| TOLERANCES & INSPECTION | | |
|--|----------------|-------------|
| UNLESS OTHERWISE SPECIFIED | | |
| ALL BEND ANGLES ARE 90 DEGREES | | |
| ALL DIMENSIONS ARE IN INCHES. | | |
| REFERENCE DIMENSIONS (X.XXX) DO NOT REQUIRE INSPECTION | | |
| FEATURES | HOLES/SLOTS | ANGLES |
| 0.0 = ± .125 | 0.0 = ± .062 | 0° = ± 2° |
| 0.00 = ± .062 | 0.00 = ± .031 | 0.0° = ± 1° |
| 0.000 = ± .031 | 0.000 = ± .015 | |
| Material Thickness: per ASTM Std. Weld Callouts per AWS | | |

| RELEASE & REVISIONS | |
|---------------------|--|
| INITIAL ECN: | 25378 |
| CURRENT ECN: | 29126 |
| ECN DESCRIPTION: | INCREASE RING TERMINALS TO 3/8" |
| REVISED BY: | MLH |

PURCHASED COMPONENT

REFERENCED SUPPLIER AND/OR MANUFACTURER
AAMP GLOBAL

REFERENCED SUPPLIER AND/OR MANUFACTURER PART NUMBER
67094 OR PWR-HAR3

COLOR (ONLY LIST IF COLOR SPECIFIC)
NO

COMODITY ITEM (Y/N) (YES = ALL DIMENSIONS AND NOTES ARE REFERENCE)
(NOTE: DIMENSIONS AND FEATURES MAY VARY FOR A COMODITY ITEM.)
NO

PRINTED DOCUMENT IS UNCONTROLLED

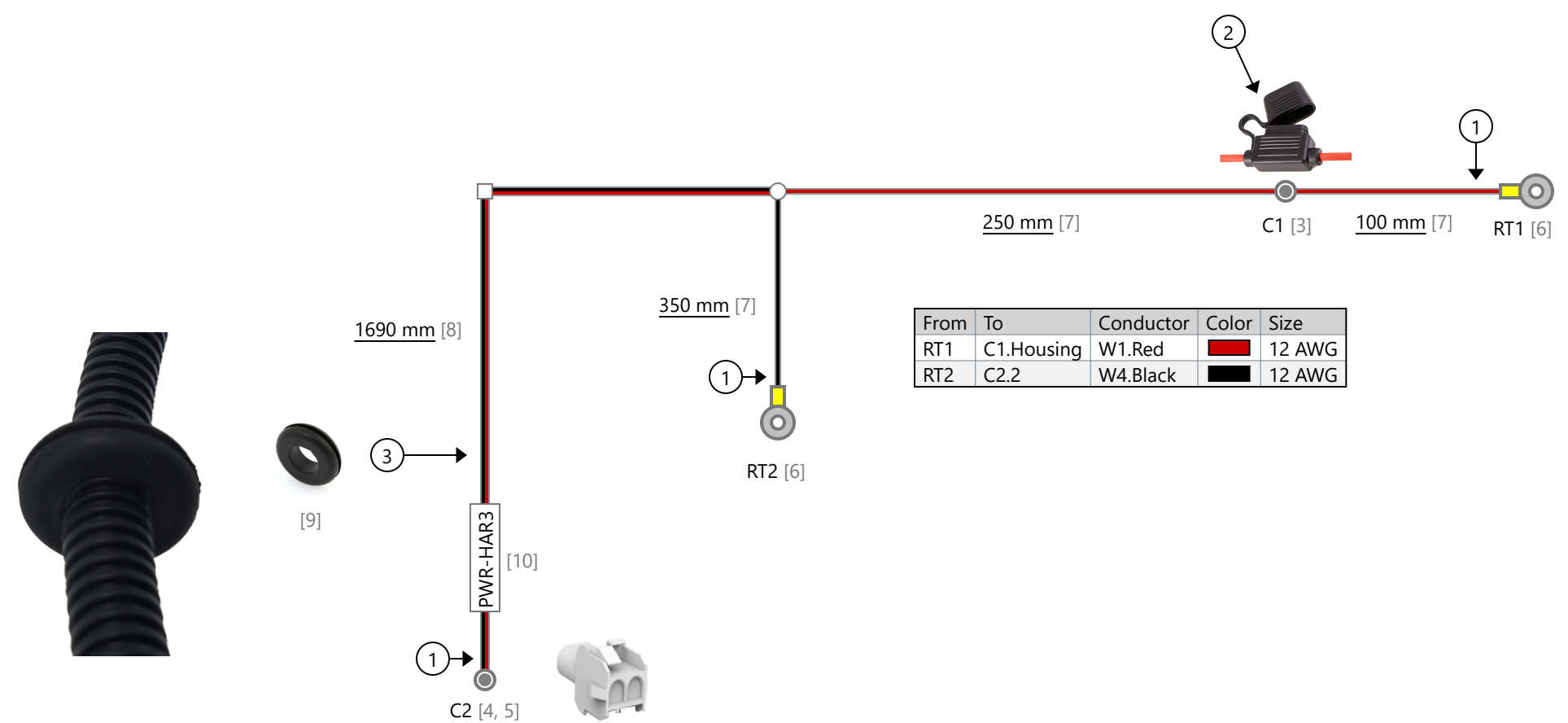
Sheet 1 of 1

| PART / PRODUCT IDENTIFICATION | | |
|--|-----------------------------|--|
| | ADRIAN STEEL® | ADRIAN STEEL COMPANY 906 JAMES STREET, ADRIAN, MI 49221 |
| MAT'L USED: PURCHASED | DESIGNED BY: E.BURKE | REVISION LEVEL B |
| DESCRIPTION: POWER HARNESS EXTERIOR 3 | | |
| WEIGHT (Lbs.): 0.2 | SEGMENT CODE: ELE | PART NUMBER: 67094 |

| Bill of Materials | | | | |
|-------------------|-------------------|----------------------|-------------------------|----------|
| Id | Type | Manufacturer | Part Number | Quantity |
| 1 | Wire | | 12 AWG Red GXL | 2040 mm |
| 2 | Wire | | 12 AWG Black GXL | 2040 mm |
| 3 | Fuse Holder | Egis Mobile Electric | 901028 | 1 |
| 4 | Connector | TE Connectivity | 1-480699-0 | 1 |
| 5 | Contact | TE Connectivity | 640309-3 | 2 |
| 6 | Ring Terminal | Molex | 19164-0068 | 2 |
| 7 | Corrugated Tubing | | 0.25" Nylon Split Wall | 700 mm |
| 8 | Corrugated Tubing | | 10mm Nylon Split Wall | 1690 mm |
| 9 | Grommet | | 14mm Grommet | 1 |
| 10 | Label | | Heat Shrink Style Label | 1 |

| Coverings | |
|-----------|----------|
| Id | Assembly |
| [7] | |
| [8] | |

| Notes | |
|-------|---|
| ① | Lock Tape Loom with Tesa 51036 |
| ② | Add 15A ATO/ATC Fuse |
| ③ | Add rubber grommet over harness loom; 150mm behind C2 |



| From | To | Conductor | Color | Size |
|------|------------|-----------|------------------------------------|--------|
| RT1 | C1.Housing | W1.Red | ■ | 12 AWG |
| RT2 | C2.2 | W4.Black | ■ | 12 AWG |

| From | To | Color | Size | From Contact PN |
|------|------------|------------------------------------|--------|-----------------|
| C2.1 | C1.Housing | ■ | 12 AWG | 640309-3 |
| C2.2 | RT2 | ■ | 12 AWG | 640309-3 |

| Revisions | | | |
|-----------|-----------|---------------|--|
| Rev. | Date | Author | Description |
| | 11/5/2021 | Bennet Fisher | Initial Drawing |
| A | 7/28/2022 | Bennet Fisher | Changed fuse holder and fuse from ATM to ATO/ATC |
| B | 2/2/2026 | Bennet Fisher | Changed ring terminals from 5/16 to 3/8 |

| | | | | |
|--|------------------------|--------------------------------|------------|-------------|
| UNLESS OTHERWISE SPECIFIED DIMENSIONS ARE IN MILLIMETERS [INCHES] TOLERANCES: ±5MM PROPRIETARY AND CONFIDENTIAL THE INFORMATION CONTAINED IN THIS DRAWING IS THE SOLE PROPERTY OF AAMP GLOBAL. ANY REPRODUCTION IN PART OR AS A WHOLE WITHOUT THE WRITTEN PERMISSION OF AAMP GLOBAL IS PROHIBITED. | | Name | Date | |
| | Designed By | Bennet Fisher | 11/05/2021 | |
| | Engineering Approval | | | |
| | Manufacturing Approval | | | |
| | Revision Approval | | | |
| Quality Assurance | | | | |
| | | Part Number: PWR-HAR3 | | Revision: B |
| | | Description: | | Sheet: |
| | | Exterior Light Battery Harness | | ---- |

PURCHASED COMPONENT KEY FEATURES

DESCRIPTION OF REQUIREMENTS

DIMENSIONAL REQUIREMENTS (AS SHOWN ON DRAWING)

N/A

LOAD/RATING REQUIREMENT

N/A

MATERIAL REQUIREMENT

N/A

PACKAGING REQUIREMENT

N/A

OTHER REQUIREMENTS



THIS DRAWING IS THE PROPERTY OF ADRIAN STEEL COMPANY AND IS NOT TO BE USED IN ANY MANNER DETRIMENTAL TO THE INTERESTS OF ADRIAN STEEL COMPANY

TOLERANCES & INSPECTION

UNLESS OTHERWISE SPECIFIED

ALL BEND ANGLES ARE 90 DEGREES

ALL DIMENSIONS ARE IN INCHES.

REFERENCE DIMENSIONS (X.XXX)
DO NOT REQUIRE INSPECTION

| FEATURES | HOLES/SLOTS | ANGLES |
|----------------|----------------|-------------|
| 0.0 = ± .125 | 0.0 = ± .062 | 0° = ± 2° |
| 0.00 = ± .062 | 0.00 = ± .031 | 0.0° = ± 1° |
| 0.000 = ± .031 | 0.000 = ± .015 | |

Material Thickness: per ASTM Std.
Weld Callouts per AWS

RELEASE & REVISIONS

INITIAL ECN: **25378**

CURRENT ECN: **25378**

ECN DESCRIPTION:

RELEASE FOR PRODUCTION

REVISED BY:

PURCHASED COMPONENT

REFERENCED SUPPLIER AND/OR MANUFACTURER

AAMP GLOBAL

REFERENCED SUPPLIER AND/OR MANUFACTURER PART NUMBER

SSW-HAR4 OR 67100

COLOR (ONLY LIST IF COLOR SPECIFIC)

COMODITY ITEM (Y/N) (YES = ALL DIMENSIONS AND NOTES ARE REFERENCE)
(NOTE: DIMENSIONS AND FEATURES MAY VARY FOR A COMODITY ITEM.)

NO

PRINTED DOCUMENT IS UNCONTROLLED

Sheet 1 of 1

PART / PRODUCT IDENTIFICATION



ADRIAN STEEL®

ADRIAN STEEL COMPANY
906 JAMES STREET, ADRIAN, MI 49221

REVISION LEVEL

A

MAT'L USED: **PURCHASED**


DESIGNED BY: **E.BURKE**

DESCRIPTION: **SWITCH HARNESS 4 EXTERIOR LIGHTING**

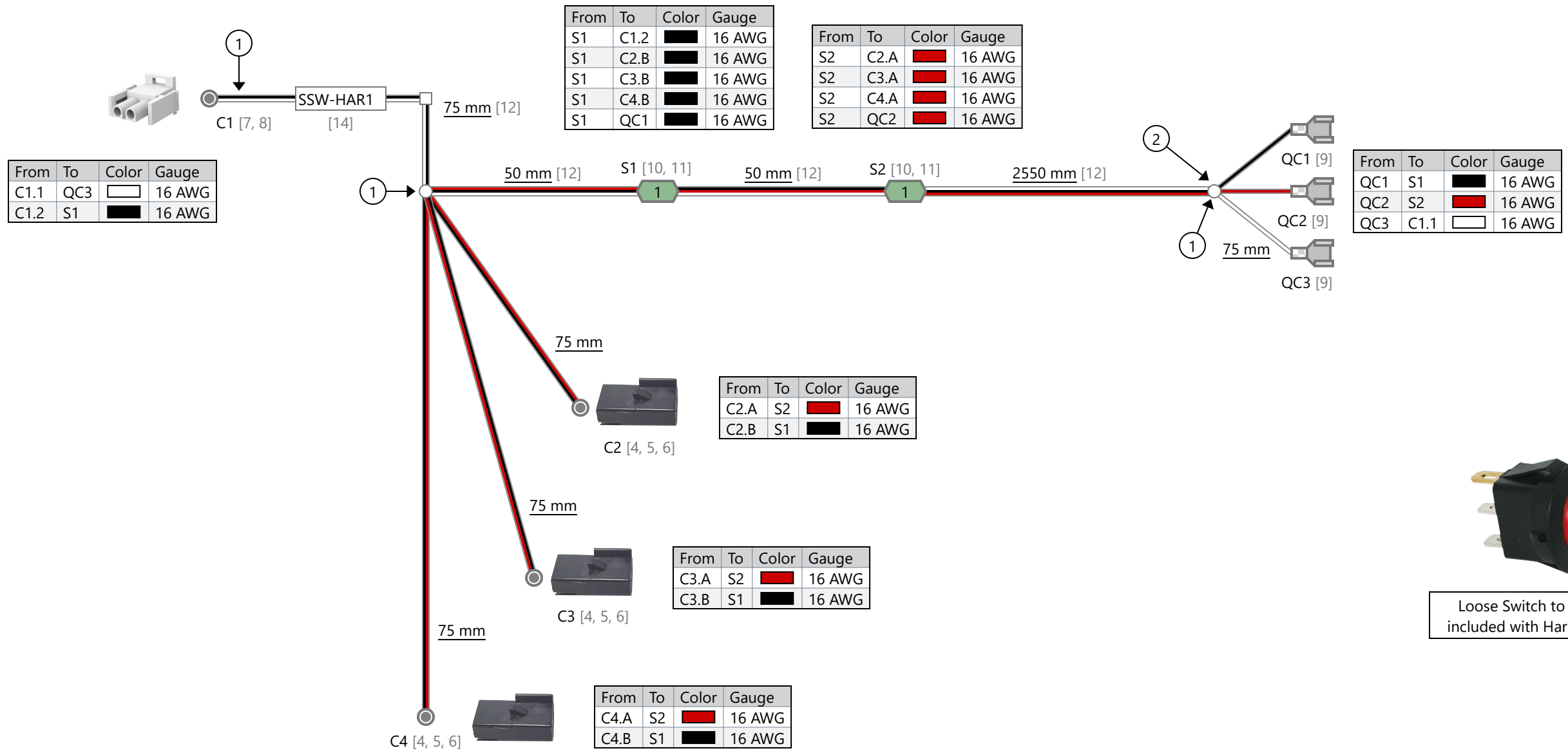
WEIGHT (Lbs.): **0.2**

SEGMENT CODE: **ELE**

PART NUMBER: **67100**

| Coverings | |
|-----------|---|
| Id | Assembly |
| [12] |  |

| Notes | |
|-------|---|
| ① | Lock Tape Loom with Tesa 51608 |
| ② | 75mm between end of loom and Quick Connects |



| Revisions | | | |
|-----------|-----------|---------------|-----------------|
| Rev. | Date | Author | Description |
| A | 11/5/2021 | Bennet Fisher | Initial Drawing |

| | | | |
|--|--|---------------|-----------|
| UNLESS OTHERWISE SPECIFIED DIMENSIONS ARE IN MILLIMETERS (INCHES) TOLERANCES: ±5MM | | Name | Date |
| Designed By | | Bennet Fisher | 11/5/2021 |
| Engineering Approval | | ---- | ---- |
| Manufacturing Approval | | ---- | ---- |
| Revision Approval | | ---- | ---- |
| Quality Assurance | | ---- | ---- |

AAMP
— ADVANCING VEHICLE TECHNOLOGY —

| | |
|--|----------------|
| Part Number: SSW-HAR4 | Revision: ---- |
| Description: Strobe Switch Harness - 3 Outputs | Sheet: 1 of 1 |

PROPRIETARY AND CONFIDENTIAL

THE INFORMATION CONTAINED IN THIS DRAWING IS THE SOLE PROPERTY OF AAMP GLOBAL. ANY REPRODUCTION IN PART OR AS A WHOLE WITHOUT THE WRITTEN PERMISSION OF AAMP GLOBAL IS PROHIBITED.

PURCHASED COMPONENT KEY FEATURES

DESCRIPTION OF REQUIREMENTS

DIMENSIONAL REQUIREMENTS (AS SHOWN ON DRAWING)

N/A

LOAD/RATING REQUIREMENT

N/A

MATERIAL REQUIREMENT

N/A

PACKAGING REQUIREMENT

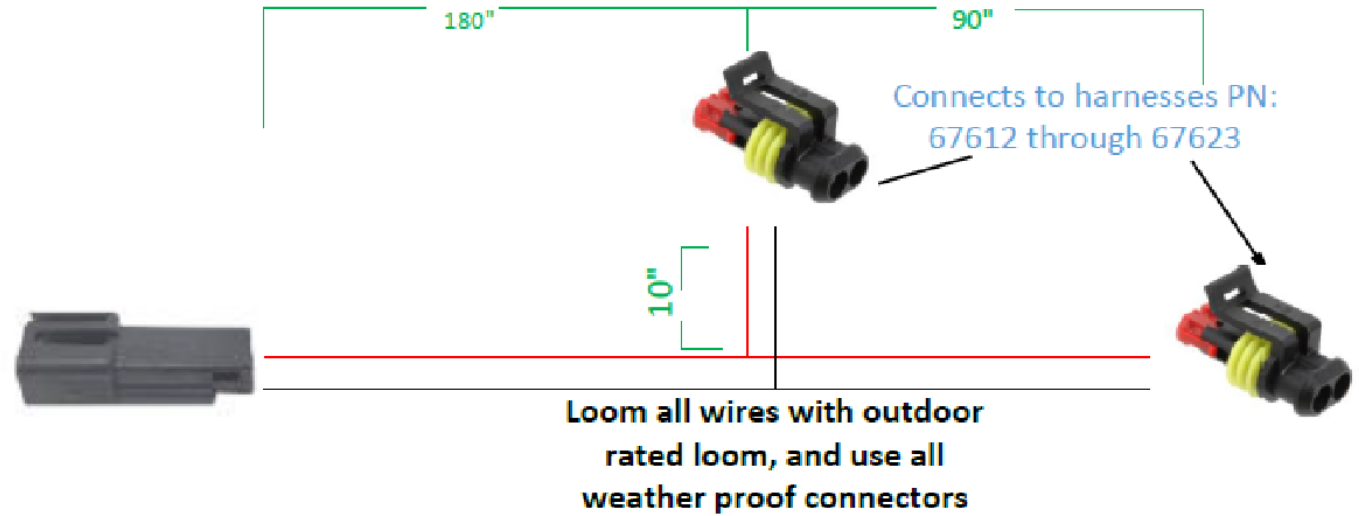
N/A

OTHER REQUIREMENTS

PLUG AND PLAY BODY HARNESS 3 FOR LADDER RACK LIGHTING

- INCLUDES:**
 2 CAPS FOR EXTERIOR CONNECTORS
 20 CABLE TIES
 5 WIRE TIE WITH CHRISTMAS TREES
 7 STICKEY BACKED CABLE TIE HOLDERS
 7 EDGE CLIP ZIP TIES
 7 NYLON PLASTIC LOOP CLAMPS
 7 PHILLIPS HEAD TEK SCREWS

#1



THIS DRAWING IS THE PROPERTY OF ADRIAN STEEL COMPANY AND IS NOT TO BE USED IN ANY MANNER DETRIMENTAL TO THE INTERESTS OF ADRIAN STEEL COMPANY

PRINTED DOCUMENT IS UNCONTROLLED

Sheet 1 of 1

TOLERANCES & INSPECTION

UNLESS OTHERWISE SPECIFIED

ALL BEND ANGLES ARE 90 DEGREES

ALL DIMENSIONS ARE IN INCHES.

REFERENCE DIMENSIONS (X.XXX)
DO NOT REQUIRE INSPECTION

| FEATURES | HOLES/SLOTS | ANGLES |
|----------------|----------------|-------------|
| 0.0 = ± .125 | 0.0 = ± .062 | 0° = ± 2° |
| 0.00 = ± .062 | 0.00 = ± .031 | 0.0° = ± 1° |
| 0.000 = ± .031 | 0.000 = ± .015 | |

Material Thickness: per ASTM Std.
Weld Callouts per AWS

RELEASE & REVISIONS

INITIAL ECN: **26041**

CURRENT ECN: **26041**

ECN DESCRIPTION:

RELEASE TO PRODUCTION

REVISED BY: **EMB**

PURCHASED COMPONENT

REFERENCED SUPPLIER AND/OR MANUFACTURER

AAMP

REFERENCED SUPPLIER AND/OR MANUFACTURER PART NUMBER

67607

COLOR (ONLY LIST IF COLOR SPECIFIC)

COMODITY ITEM (Y/N) (YES = ALL DIMENSIONS AND NOTES ARE REFERENCE)
(NOTE: DIMENSIONS AND FEATURES MAY VARY FOR A COMODITY ITEM.)

NO

PART / PRODUCT IDENTIFICATION



ADRIAN STEEL®

ADRIAN STEEL COMPANY
906 JAMES STREET, ADRIAN, MI 49221

REVISION LEVEL

A

MAT'L USED: **PURCHASED**

DESIGNED BY: **E.BURKE**

DESCRIPTION: **BODY HARN 3 EXT P&P**

WEIGHT (Lbs.): **0.1**

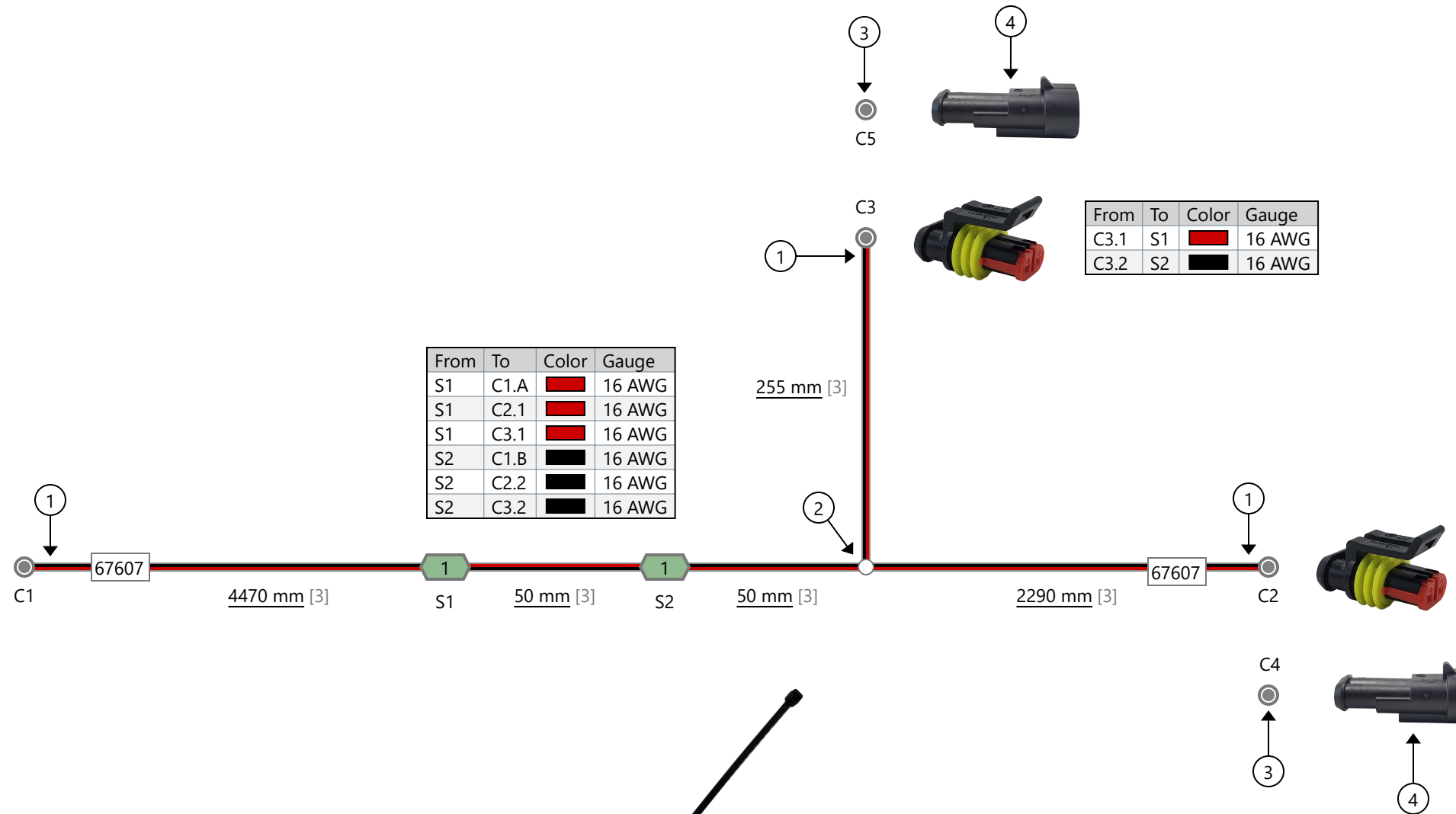
SEGMENT CODE: **ELE**

PART NUMBER: **67607**

| Bill of Materials | | | |
|-------------------|----------------------|------------------------|----------|
| Id | Type | Part Number | Quantity |
| 1 | Wire | 16 AWG Red GXL | 7215 mm |
| 2 | Wire | 16 AWG Black GXL | 7165 mm |
| 3 | Corrugated Tubing | 0.25" Nylon Split Wall | 7115 mm |
| 4 | Edge Clip Cable Tie | 156-00539 | 7 |
| 5 | Fastener | 90415A330 | 7 |
| 6 | Cable Clamp | | 7 |
| 7 | Cable Tie Mount | | 7 |
| 8 | Cable Tie with Mount | 156-00157 | 5 |
| 9 | Cable Tie | | 20 |

| Coverings | |
|-----------|----------|
| Id | Assembly |
| [3] | |

| Notes | |
|-------|--|
| ① | Lock Tape Loom with Tesa 51036 |
| ② | Lock Tape Loom with Tesa 51036 on both side of wire breakout |
| ③ | Plug C4 into C2; Plug C5 into C3 |
| ④ | C4 & C5 Cavities are sealed |



| From | To | Color | Gauge |
|------|------|-------|--------|
| S1 | C1.A | Red | 16 AWG |
| S1 | C2.1 | Red | 16 AWG |
| S1 | C3.1 | Red | 16 AWG |
| S2 | C1.B | Black | 16 AWG |
| S2 | C2.2 | Black | 16 AWG |
| S2 | C3.2 | Black | 16 AWG |

| From | To | Color | Gauge |
|------|----|-------|--------|
| C3.1 | S1 | Red | 16 AWG |
| C3.2 | S2 | Black | 16 AWG |

| From | To | Color | Gauge |
|------|----|-------|--------|
| C2.1 | S1 | Red | 16 AWG |
| C2.2 | S2 | Black | 16 AWG |

| From | To | Color | Gauge |
|------|----|-------|--------|
| C1.A | S1 | Red | 16 AWG |
| C1.B | S2 | Black | 16 AWG |



| | | | | |
|--|------------------------|---------------|--|------------|
| <p>UNLESS OTHERWISE SPECIFIED DIMENSIONS ARE IN MILLIMETERS [INCHES] TOLERANCES: ±5MM</p> <p>PROPRIETARY AND CONFIDENTIAL</p> <p>THE INFORMATION CONTAINED IN THIS DRAWING IS THE SOLE PROPERTY OF AAMP GLOBAL. ANY REPRODUCTION IN PART OR AS A WHOLE WITHOUT THE WRITTEN PERMISSION OF AAMP GLOBAL IS PROHIBITED.</p> | Name | Date | | |
| | Designed By | Bennet Fisher | | 05/09/2022 |
| | Engineering Approval | | | |
| | Manufacturing Approval | | | |
| | Revision Approval | | | |
| Quality Assurance | | | | |

| Revisions | | | |
|-----------|------------|---------------|---|
| Rev. | Date | Author | Description |
| | 5/9/2022 | Bennet Fisher | Initial Drawing |
| | 7/14/2022 | Bennet Fisher | Updated Wire Lengths to Connector C2 and C3 |
| A | 12/15/2022 | Bennet Fisher | Updated Wire Lengths to Connector C2 and C3; Added loom for C2; Added Connector "Caps" with Seals; Added Second Harness Label |

| | |
|--|-------------|
| Part Number: 67607_ | Revision: A |
| Description: Strobe Extension Harness | Sheet: 1 |

PURCHASED COMPONENT KEY FEATURES

DESCRIPTION OF REQUIREMENTS

DIMENSIONAL REQUIREMENTS (AS SHOWN ON DRAWING)

N/A

LOAD/RATING REQUIREMENT

N/A

MATERIAL REQUIREMENT

N/A

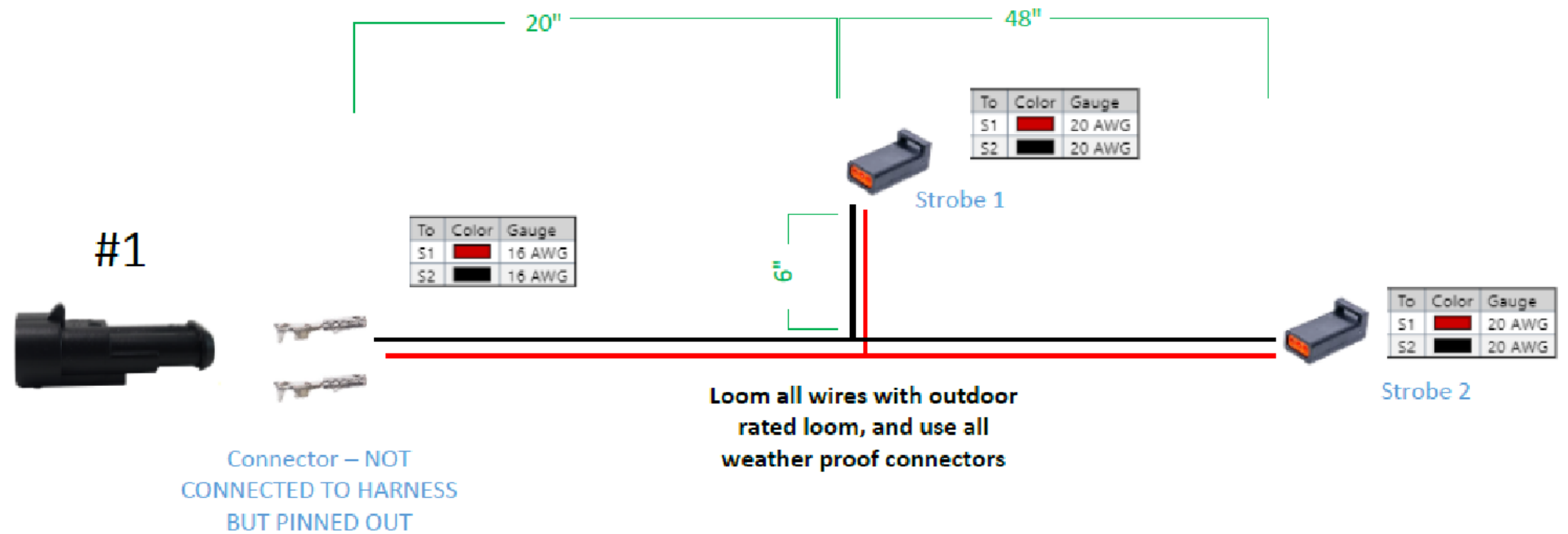
PACKAGING REQUIREMENT

N/A

OTHER REQUIREMENTS

**PLUG AND PLAY HARNESS FOR LADDER RACKS
2 STROBES, 1 ON EACH END OF 58" RACK**

**INCLUDES:
10 CABLE TIES
1 CABLE GLAND
1 UN-CONNECTED TE282080-1 IN BAG**



THIS DRAWING IS THE PROPERTY OF ADRIAN STEEL COMPANY AND IS NOT TO BE USED IN ANY MANNER DETRIMENTAL TO THE INTERESTS OF ADRIAN STEEL COMPANY

PRINTED DOCUMENT IS UNCONTROLLED

Sheet 1 of 1

TOLERANCES & INSPECTION

UNLESS OTHERWISE SPECIFIED

ALL BEND ANGLES ARE 90 DEGREES

ALL DIMENSIONS ARE IN INCHES.

REFERENCE DIMENSIONS (X.XXX)
DO NOT REQUIRE INSPECTION

| FEATURES | HOLES/SLOTS | ANGLES |
|----------------|----------------|-------------|
| 0.0 = ± .125 | 0.0 = ± .062 | 0° = ± 2° |
| 0.00 = ± .062 | 0.00 = ± .031 | 0.0° = ± 1° |
| 0.000 = ± .031 | 0.000 = ± .015 | |

Material Thickness: per ASTM Std.
Weld Callouts per AWS

RELEASE & REVISIONS

INITIAL ECN: **26041**

CURRENT ECN: **26041**

ECN DESCRIPTION:

RELEASE TO PRODUCTION

REVISED BY: **EMB**

PURCHASED COMPONENT

REFERENCED SUPPLIER AND/OR MANUFACTURER

AAMP

REFERENCED SUPPLIER AND/OR MANUFACTURER PART NUMBER

67614

COLOR (ONLY LIST IF COLOR SPECIFIC)

COMODITY ITEM (Y/N) (YES = ALL DIMENSIONS AND NOTES ARE REFERENCE)
(NOTE: DIMENSIONS AND FEATURES MAY VARY FOR A COMODITY ITEM.)

NO

PART / PRODUCT IDENTIFICATION



ADRIAN STEEL®

ADRIAN STEEL COMPANY
906 JAMES STREET, ADRIAN, MI 49221

REVISION LEVEL

A

MAT'L USED: **PURCHASED**

DESIGNED BY: **E.BURKE**

DESCRIPTION: **STROBE HARN FOR 58" RACK**

WEIGHT (Lbs.): **0.1**

SEGMENT CODE: **ELE**

PART NUMBER: **67614**

PURCHASED COMPONENT KEY FEATURES

DESCRIPTION OF REQUIREMENTS

DIMENSIONAL REQUIREMENTS (AS SHOWN ON DRAWING)

N/A

LOAD/RATING REQUIREMENT

N/A

MATERIAL REQUIREMENT

N/A

PACKAGING REQUIREMENT

N/A

OTHER REQUIREMENTS

**ECCO STROBE LIGHT: ED3801
WITH EXTERIOR PLUG AND PLAY CONNECTOR**



THIS DRAWING IS THE PROPERTY OF ADRIAN STEEL COMPANY AND IS NOT TO BE USED IN ANY MANNER DETRIMENTAL TO THE INTERESTS OF ADRIAN STEEL COMPANY

TOLERANCES & INSPECTION

UNLESS OTHERWISE SPECIFIED

ALL BEND ANGLES ARE 90 DEGREES

ALL DIMENSIONS ARE IN INCHES.

REFERENCE DIMENSIONS (X.XXX)
DO NOT REQUIRE INSPECTION

| FEATURES | HOLES/SLOTS | ANGLES |
|----------------|----------------|-------------|
| 0.0 = ± .125 | 0.0 = ± .062 | 0° = ± 2° |
| 0.00 = ± .062 | 0.00 = ± .031 | 0.0° = ± 1° |
| 0.000 = ± .031 | 0.000 = ± .015 | |

Material Thickness: per ASTM Std.
Weld Callouts per AWS

RELEASE & REVISIONS

INITIAL ECN: **25921**

CURRENT ECN: **25921**

ECN DESCRIPTION:

RELEASE TO PRODUCTION

REVISED BY: **N/A**

PURCHASED COMPONENT

REFERENCED SUPPLIER AND/OR MANUFACTURER

ECCO

REFERENCED SUPPLIER AND/OR MANUFACTURER PART NUMBER

ED3801A-ADR

COLOR (ONLY LIST IF COLOR SPECIFIC)

AMBER LED/CLEAR LENS

COMODITY ITEM (Y/N) (YES = ALL DIMENSIONS AND NOTES ARE REFERENCE)
(NOTE: DIMENSIONS AND FEATURES MAY VARY FOR A COMODITY ITEM.)

NO

PRINTED DOCUMENT IS UNCONTROLLED

Sheet 1 of 1

PART / PRODUCT IDENTIFICATION



ADRIAN STEEL®

ADRIAN STEEL COMPANY
906 JAMES STREET, ADRIAN, MI 49221

REVISION LEVEL

A

MAT'L USED: **PURCHASED**

DESIGNED BY: **EMB**

DESCRIPTION: **ECCO STROBE ED3801A W/CON**

WEIGHT (Lbs.): **0.5**

SEGMENT CODE: **EST**

PART NUMBER: **67686**