

ITEM DESCRIPTION: WIRE TIE, NYLON 40Lb, 8.5" BLACK

MANUFACTURER: WAYTEK, INC. or equivalent
MANUFACTURERS PART NUMBER: 21093M or 21093C

SPECIFICATIONS: STANDARD CABLE TIE
 BLACK, NYLON
 8-1/2" LONG
 TENSILE STRENGTH: 40.0 LBS
 21093M = 1,000 quantity
 21093C = 100 quantity

SPECIAL NOTES: PART NUMBER IS BLACK.

SUPPLIED BY: THIS ITEM IS ADRIAN AVAILABLE!

PURCHASED PRODUCT DATA SHEET (PPDS)

THIS DRAWING/INFORMATION IS THE PROPERTY OF ADRIAN STEEL COMPANY AND IS NOT TO BE USED IN ANY MANNER THAT IS DETRIMENTAL TO THE INTEREST OF ADRIAN STEEL. COPYRIGHTS AND OR PATENTS THAT MAY BE THE PROPERTY OF APPLICABLE OWNERS MAY PROTECT INFORMATION AND/OR DRAWINGS OF SUPPLIED PRODUCTS.



ADRIAN STEEL
VAN AND PICKUP EQUIPMENT

906 JAMES STREET
ADRIAN, MI 49221
517-265-6194
WWW.ADRIANSTEEL.COM



CAUTION
WHEN INSTALLING EQUIPMENT IN OR ON
VEHICLES CHECK FOR FUEL TANKS, FUEL
LINES, CONTROL LINES AND ELECTRICAL
WIRING BEFORE DRILLING! ALWAYS USE
DRILL BITS WITH INTEGRAL STOPS
WHENEVER POSSIBLE!

DRAWN BY
MDG

DATE DRAWN
10/26/2006

ECN NUMBER
18021

ECN DATE
11/13/2015

PART WEIGHT
0.01 LBS.

REV. LEVEL
D

PART NUMBER
13905-0

PART NUMBER

26618-0**ITEM DESCRIPTION: SILICONE, 1oz. TUBE**

SPECIFICATIONS: SU5005 RTV SILICONE
1oz. TUBE
CLEAR OR EQUIVILENT
SELF PIERCING CAP

SPECIAL NOTES:

SUPPLIED BY: THIS ITEM IS ADRIAN AVAILABLE!

PURCHASED PRODUCT DATA SHEET (PPDS)

THIS DRAWING/INFORMATION IS THE PROPERTY OF ADRIAN STEEL COMPANY AND IS NOT TO BE USED IN ANY MANNER THAT IS DETRIMENTAL TO THE INTEREST OF ADRIAN STEEL. COPYRIGHTS AND OR PATENTS THAT MAY BE THE PROPERTY OF APPLICABLE OWNERS MAY PROTECT INFORMATION AND/OR DRAWINGS OF SUPPLIED PRODUCTS.



ADRIAN STEEL
VAN AND PICKUP EQUIPMENT

906 JAMES STREET
ADRIAN, MI 49221
517-265-6194
WWW.ADRIANSTEEL.COM



**WHEN INSTALLING EQUIPMENT IN OR ON
VEHICLES CHECK FOR FUEL TANKS, FUEL
LINES, CONTROL LINES AND ELECTRICAL
WIRING BEFORE DRILLING! ALWAYS USE
DRILL BITS WITH INTEGRAL STOPS
WHENEVER POSSIBLE!**

DRAWN BY
JLC

DATE DRAWN
7/21/2001

ECN NUMBER
16551

ECN DATE
7/22/2014

PART WEIGHT
0.02 LBS.

REV. LEVEL
C

PART NUMBER
26618-0

PART NUMBER

26618-0**ITEM DESCRIPTION: SILICONE, 1oz. TUBE**

SPECIFICATIONS: SU5005 RTV SILICONE
1oz. TUBE
CLEAR OR EQUIVILENT
SELF PIERCING CAP

SPECIAL NOTES:

SUPPLIED BY: THIS ITEM IS ADRIAN AVAILABLE!

PURCHASED PRODUCT DATA SHEET (PPDS)

THIS DRAWING/INFORMATION IS THE PROPERTY OF ADRIAN STEEL COMPANY AND IS NOT TO BE USED IN ANY MANNER THAT IS DETRIMENTAL TO THE INTEREST OF ADRIAN STEEL. COPYRIGHTS AND OR PATENTS THAT MAY BE THE PROPERTY OF APPLICABLE OWNERS MAY PROTECT INFORMATION AND/OR DRAWINGS OF SUPPLIED PRODUCTS.



ADRIAN STEEL
VAN AND PICKUP EQUIPMENT

**906 JAMES STREET
ADRIAN, MI 49221
517-265-6194
WWW.ADRIANSTEEL.COM**



CAUTION
WHEN INSTALLING EQUIPMENT IN OR ON
VEHICLES CHECK FOR FUEL TANKS, FUEL
LINES, CONTROL LINES AND ELECTRICAL
WIRING BEFORE DRILLING! ALWAYS USE
DRILL BITS WITH INTEGRAL STOPS
WHENEVER POSSIBLE!

DRAWN BY
JLC

DATE DRAWN
7/21/2001

ECN NUMBER
16551

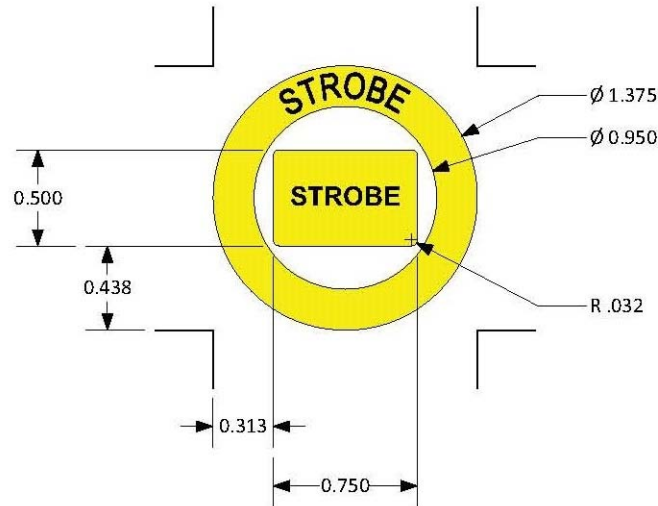
ECN DATE
7/22/2014

PART WEIGHT
0.02 LBS.

REV. LEVEL
C

PART NUMBER
26618-0

ITEM DESCRIPTION: STROBE SWITCH DECAL SET



MANUFACTURER: VANNER

MANUFACTURERS PART NUMBER: TBD

SPECIFICATIONS: (1) Circular Yellow Decal (ID=0.950", OD=1.375") with "STROBE" in black letters
 (1) Rectangular Yellow Decal (H=0.500", L=0.750") with "STROBE" in black letters

SPECIAL NOTES: For round rocker switch (OD=0.780") and Ford Transit Upfitter Switches.

SUPPLIED BY: THIS ITEM IS ADRIAN AVAILABLE!**PURCHASED PRODUCT DATA SHEET (PPDS)**

Page 1 of 1

THIS DRAWING/INFORMATION IS THE PROPERTY OF ADRIAN STEEL COMPANY AND IS NOT TO BE USED IN ANY MANNER THAT IS DETRIMENTAL TO THE INTEREST OF ADRIAN STEEL. COPYRIGHTS AND OR PATENTS THAT MAY BE THE PROPERTY OF APPLICABLE OWNERS MAY PROTECT INFORMATION AND/OR DRAWINGS OF SUPPLIED PRODUCTS.

**ADRIAN STEEL**

Cargo Management Solutions for Commercial Vehicles

906 JAMES STREET
 ADRIAN, MI 49221
 517-265-6194

WWW.ADRIANSTEEL.COM

**CAUTION**

WHEN INSTALLING EQUIPMENT IN OR ON VEHICLES CHECK FOR FUEL TANKS, FUEL LINES, CONTROL LINES AND ELECTRICAL WIRING BEFORE DRILLING! ALWAYS USE DRILL BITS WITH INTEGRAL STOPS WHENEVER POSSIBLE!

DRAWN BY
 RJB

DATE DRAWN
 11/15/2017

ECN NUMBER
 XXXX

ECN DATE
 XXXXXX

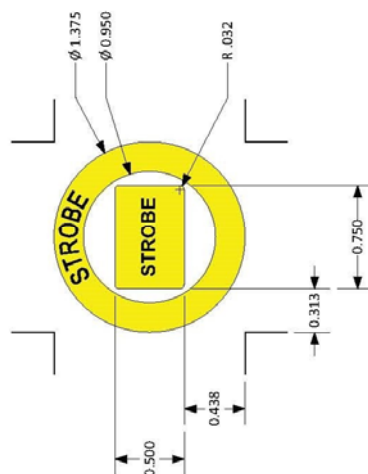
PART WEIGHT
 0.02 LBS.

REV. LEVEL
 A

PART NUMBER
55073

REVISIONS			
REV	DESCRIPTION	DATE	RE/ECO

- NOTES:
1. MATERIAL : .002 YELLOW POLYESTER
 2. ARTWORK FROM D91XXXX-A PAGE 1, PMS BLACK
 3. .001 OVERLAMINATE
 4. ADHESIVE BACKED



VANNER INCORPORATED		HILLIARD, OHIO USA	
TOL. LABEL/ METAL .x ± .025 .xx ± .015 .xxx ± .005		TITLE: LABEL, STROBE TXT, .95ID ROUND SWITCH	
TOL. CABLES .xxx ± .25		DRAWING/ PART NO. D01XXXX	
DRNDATE MEO 11/14/17	CHKDATE XXX XXXXXX	SHEET 1 OF 1	REV A
SCALE: NONE RE/ECO NO.: XXXX			
THIS DRAWING AND ALL INFORMATION CONTAINED HEREIN IS THE PROPERTY OF VANNER INC. AND MAY NOT BE COPIED, REPRODUCED OR DIVULGED TO UNAUTHORIZED PERSONS WITHOUT THE EXPRESS WRITTEN CONSENT OF VANNER INC. IT IS PROVIDED SOLELY FOR THE CONVENIENCE OF THE USER AND SHALL BE RETURNED UPON REQUEST.			

PART NUMBER
55073

Page 2 of 1

THIS DRAWING/INFORMATION IS THE PROPERTY OF ADRIAN STEEL COMPANY AND IS NOT TO BE USED IN ANY MANNER THAT IS DETRIMENTAL TO THE INTEREST OF ADRIAN STEEL. COPYRIGHTS AND OR PATENTS THAT MAY BE THE PROPERTY OF APPLICABLE OWNERS MAY PROTECT INFORMATION AND/OR DRAWINGS OF SUPPLIED PRODUCTS.



906 JAMES STREET
ADRIAN, MI 49221
517-265-6194
WWW.ADRIANSTEEL.COM



WHEN INSTALLING EQUIPMENT IN OR ON VEHICLES CHECK FOR FUEL TANKS, FUEL LINES, CONTROL LINES AND ELECTRICAL WIRING BEFORE DRILLING! ALWAYS USE DRILL BITS WITH INTEGRAL STOPS WHENEVER POSSIBLE!

DRAWN BY
RJB

DATE DRAWN
11/15/2017

ECN NUMBER
XXXX

ECN DATE
XXXXXXX

PART WEIGHT
0.02 LBS.

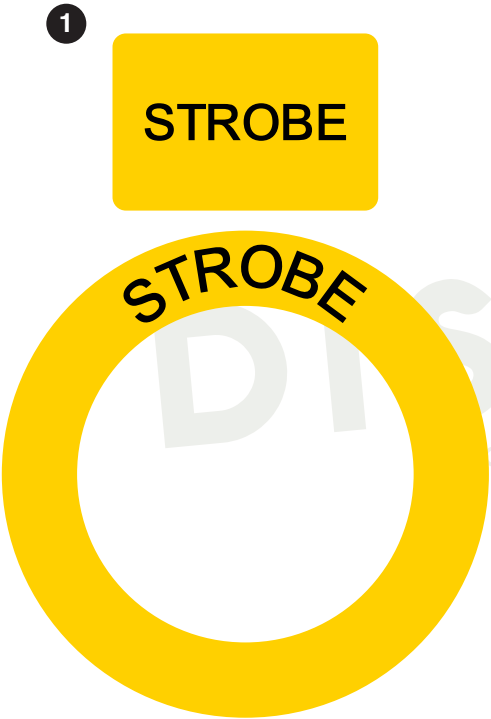
REV. LEVEL
A

PART NUMBER
55073

LOC | QTY | Part # | Description | Size

Material: IJ39 | Lamination: 8518

1 1: 6039597.Strobe Switch-1.52" x 2.07"



Note: Part will not be weeded, just cut.

Kit# 8001872 | Adrian Steel Part # 55073

06/01/2023 • JY
© 2022 DISTYLL Graphics Solutions. All rights reserved.

ASCO REV.1 6/14/2023

<div><div>DISTYLL</div><div>GRAPHIC SOLUTIONS</div><div>FINAL DESIGN</div></div>	CLIENT NAME:		Switch Decals		O-ID: O15319-1
	Adrian Steel				Rev #: XXXX
	DATE:	DESIGNER:			Opt #: A
	O5/31/2023	TRN			

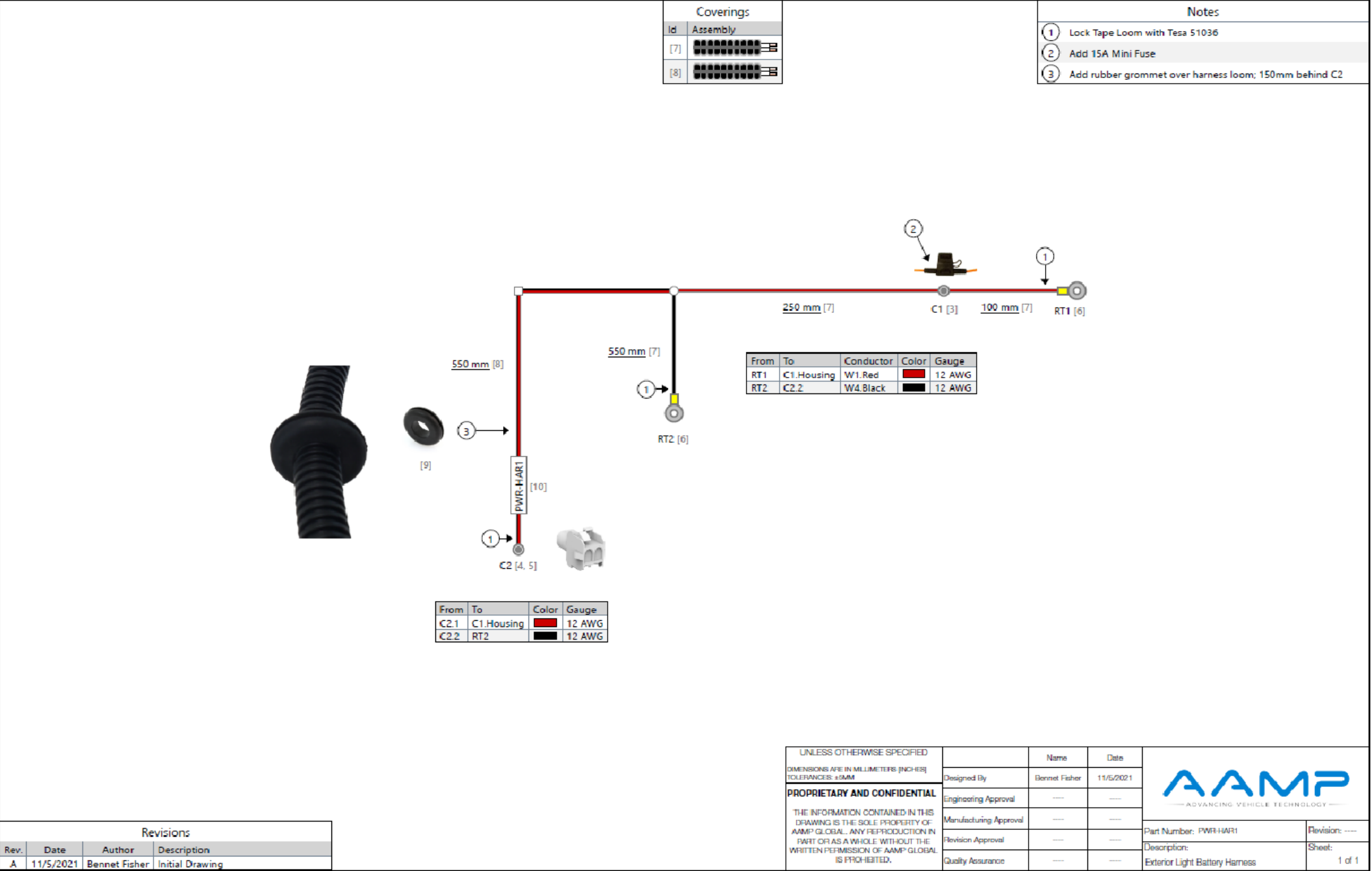
Please check information to confirm accurate vehicle specifications.

CLEANING INSTRUCTIONS All surfaces must be considered contaminated. Clean the vehicle surface immediately before applying the film. Dust and other contaminates can collect quickly on the surface and prevent the film from adhering properly. Even a freshly painted surface can collect dust before graphics can be applied.

For the best success with the films recommended for vehicle graphics, always apply the graphics when the air and vehicle surface are both above 60°F (16°C) and below 90°F (32°C) before beginning the installation.

PURCHASED COMPONENT KEY FEATURES

DESCRIPTION OF REQUIREMENTS
DIMENSIONAL REQUIREMENTS (AS SHOWN ON DRAWING)
N/A
LOAD/RATING REQUIREMENT
N/A
MATERIAL REQUIREMENT
N/A
PACKAGING REQUIREMENT
N/A
OTHER REQUIREMENTS



THIS DRAWING IS THE PROPERTY OF ADRIAN STEEL COMPANY AND IS NOT TO BE USED IN ANY MANNER DETRIMENTAL TO THE INTERESTS OF ADRIAN STEEL COMPANY

TOLERANCES & INSPECTION	RELEASE & REVISIONS
UNLESS OTHERWISE SPECIFIED ALL BEND ANGLES ARE 90 DEGREES ALL DIMENSIONS ARE IN INCHES. REFERENCE DIMENSIONS (X.XXX) DO NOT REQUIRE INSPECTION	INITIAL ECN: 25378 CURRENT ECN: 25378 ECN DESCRIPTION: RELEASE FOR PRODUCTION
FEATURES 0.0 = ± .125 0.00 = ± .062 0.000 = ± .031 Material Thickness: per ASTM Std. Weld Callouts per AWS	HOLES/SLOTS 0.0 = ± .062 0.00 = ± .031 0.000 = ± .015 REVISD BY:
ANGLES 0° = ± 2° 0.0° = ± 1°	

PURCHASED COMPONENT

REFERENCED SUPPLIER AND/OR MANUFACTURER
AAMP GLOBAL

REFERENCED SUPPLIER AND/OR MANUFACTURER PART NUMBER
67092 OR PWR-HAR1

COLOR (ONLY LIST IF COLOR SPECIFIC)
NO

COMODITY ITEM (Y/N) (YES = ALL DIMENSIONS AND NOTES ARE REFERENCE)
(NOTE: DIMENSIONS AND FEATURES MAY VARY FOR A COMODITY ITEM.)
NO

PRINTED DOCUMENT IS UNCONTROLLED

SHEET 1 OF 1

PART / PRODUCT IDENTIFICATION		
<div><div></div><div>ADRIAN STEEL®</div></div>		REVISION LEVEL <div>A</div>
ADRIAN STEEL COMPANY 906 JAMES STREET, ADRIAN, MI 49221		
MAT'L USED: PURCHASED	DESIGNED BY: E.BURKE	
DESCRIPTION: POWER HARNESS EXTERIOR 1		
WEIGHT (Lbs.): 0.2	SEGMENT CODE: ELE	PART NUMBER: 67092

PURCHASED
COMPONENT
KEY FEATURES

DESCRIPTION OF REQUIREMENTS
DIMENSIONAL REQUIREMENTS (AS SHOWN ON DRAWING)
N/A
LOAD/RATING REQUIREMENT
N/A
MATERIAL REQUIREMENT
N/A
PACKAGING REQUIREMENT
N/A
OTHER REQUIREMENTS



THIS DRAWING IS THE PROPERTY OF ADRIAN STEEL COMPANY AND IS NOT TO BE USED IN ANY MANNER
DETRIMENTAL TO THE INTERESTS OF ADRIAN STEEL COMPANY

TOLERANCES & INSPECTION	RELEASE & REVISIONS
UNLESS OTHERWISE SPECIFIED	INITIAL ECN: 25378
ALL BEND ANGLES ARE 90 DEGREES	CURRENT ECN: 25378
ALL DIMENSIONS ARE IN INCHES.	ECN DESCRIPTION:
REFERENCE DIMENSIONS (X.XXX) DO NOT REQUIRE INSPECTION	RELEASE FOR PRODUCTION
FEATURES 0.0 = ± .125 0.00 = ± .062 0.000 = ± .031	REVISED BY:
HOLES/SLOTS 0.0 = ± .062 0.00 = ± .031 0.000 = ± .015	
ANGLES 0° = ± 2° 0.0° = ± 1°	
Material Thickness: per ASTM Std. Weld Callouts per AWS	

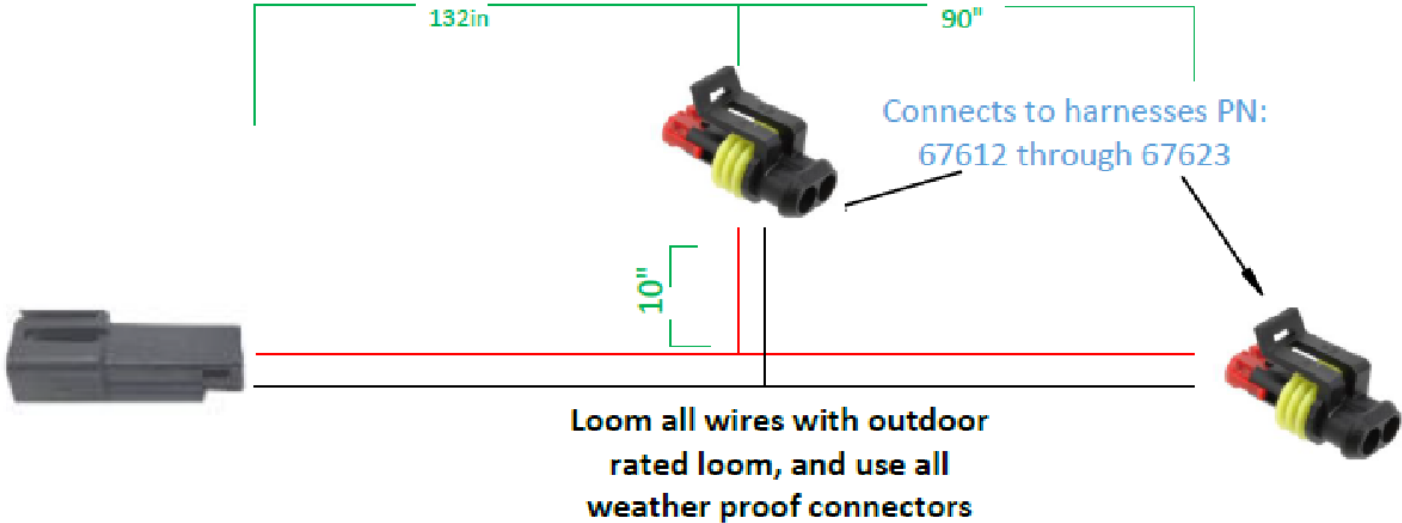
PURCHASED COMPONENT
REFERENCED SUPPLIER AND/OR MANUFACTURER
AAMP GLOBAL
REFERENCED SUPPLIER AND/OR MANUFACTURER PART NUMBER
SSW-HAR3 OR 67099
COLOR (ONLY LIST IF COLOR SPECIFIC)
COMODITY ITEM (Y/N) (YES = ALL DIMENSIONS AND NOTES ARE REFERENCE) (NOTE: DIMENSIONS AND FEATURES MAY VARY FOR A COMODITY ITEM.)
NO

PRINTED DOCUMENT IS UNCONTROLLED			Sheet 1 of 1
PART / PRODUCT IDENTIFICATION			
	ADRIAN STEEL®		ADRIAN STEEL COMPANY 906 JAMES STREET, ADRIAN, MI 49221
	DESIGNED BY: E.BURKE		REVISION LEVEL A
MAT'L USED:	PURCHASED	DESCRIPTION: SWITCH HARNESS 3 EXTERIOR LIGHTING	
WEIGHT (Lbs.):	0.2	SEGMENT CODE: ELE	PART NUMBER: 67099

PURCHASED
COMPONENT
KEY FEATURES

DESCRIPTION OF REQUIREMENTS
DIMENSIONAL REQUIREMENTS (AS SHOWN ON DRAWING) N/A
LOAD/RATING REQUIREMENT N/A
MATERIAL REQUIREMENT N/A
PACKAGING REQUIREMENT N/A
OTHER REQUIREMENTS PLUG AND PLAY BODY HARNESS 5 FOR LADDER RACK LIGHTING INCLUDES: 2 CAPS FOR EXTERIOR CONNECTORS 20 CABLE TIES 5 WIRE TIE WITH CHRISTMAS TREES 7 STICKEY BACKED CABLE TIE HOLDERS

#1



THIS DRAWING IS THE PROPERTY OF ADRIAN STEEL COMPANY AND IS NOT TO BE USED IN ANY MANNER
DETRIMENTAL TO THE INTERESTS OF ADRIAN STEEL COMPANY

TOLERANCES & INSPECTION

UNLESS OTHERWISE SPECIFIED		
ALL BEND ANGLES ARE 90 DEGREES		
ALL DIMENSIONS ARE IN INCHES.		
REFERENCE DIMENSIONS (X.XXX) DO NOT REQUIRE INSPECTION		
FEATURES	HOLES/SLOTS	ANGLES
0.0 = ± .125	0.0 = ± .062	0° = ± 2°
0.00 = ± .062	0.00 = ± .031	0.0° = ± 1°
0.000 = ± .031	0.000 = ± .015	
Material Thickness: per ASTM Std. Weld Callouts per AWS		

RELEASE & REVISIONS

INITIAL ECN: 26041
CURRENT ECN: 26041
ECN DESCRIPTION:
RELEASE TO PRODUCTION
REVISED BY: EMB


PURCHASED
COMPONENT

REFERENCED SUPPLIER AND/OR MANUFACTURER AAMP
REFERENCED SUPPLIER AND/OR MANUFACTURER PART NUMBER 67610
COLOR (ONLY LIST IF COLOR SPECIFIC) NO
COMODITY ITEM (Y/N) (YES = ALL DIMENSIONS AND NOTES ARE REFERENCE) (NOTE: DIMENSIONS AND FEATURES MAY VARY FOR A COMODITY ITEM.) NO

PRINTED DOCUMENT IS UNCONTROLLED

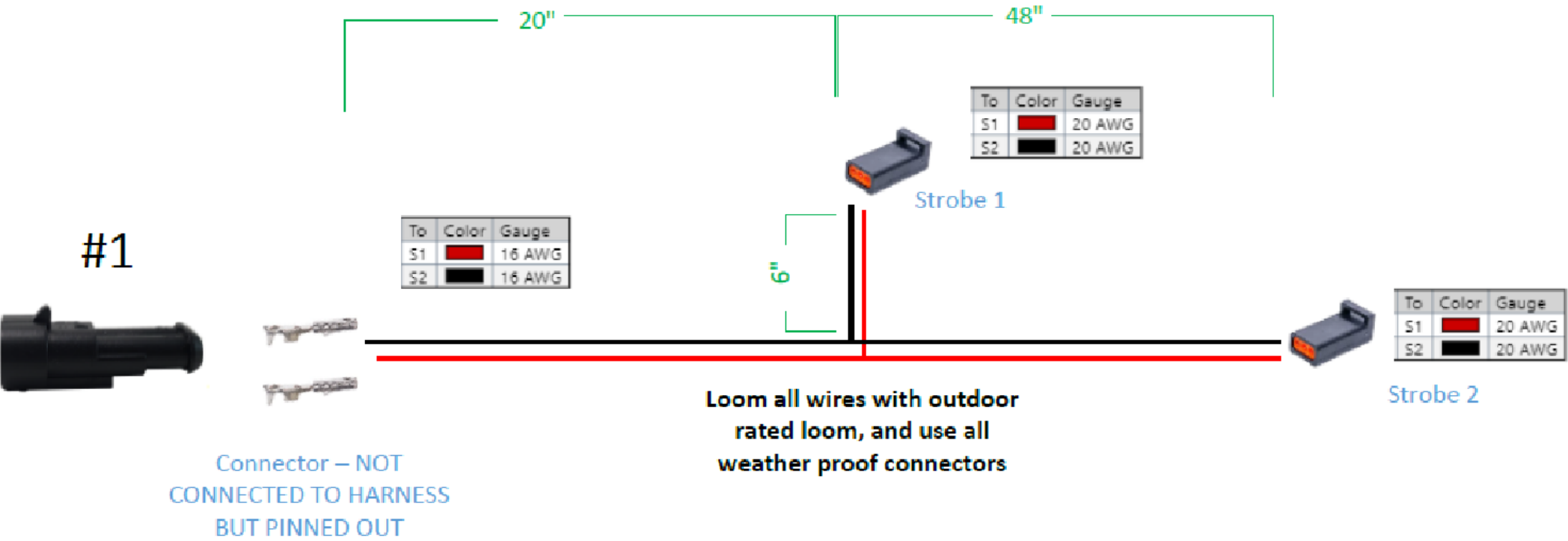
Sheet 1 of 1

PART / PRODUCT IDENTIFICATION

 ADRIAN STEEL®		ADRIAN STEEL COMPANY 906 JAMES STREET, ADRIAN, MI 49221	REVISION LEVEL A
MAT'L USED: PURCHASED		DESIGNED BY: E.BURKE	
DESCRIPTION: BODY HARN 5 EXT P&P			
WEIGHT (Lbs.): 0.1	SEGMENT CODE: ELE	PART NUMBER: 67610	

PURCHASED
COMPONENT
KEY FEATURES

DESCRIPTION OF REQUIREMENTS
DIMENSIONAL REQUIREMENTS (AS SHOWN ON DRAWING)
N/A
LOAD/RATING REQUIREMENT
N/A
MATERIAL REQUIREMENT
N/A
PACKAGING REQUIREMENT
N/A
OTHER REQUIREMENTS
PLUG AND PLAY HARNESS FOR LADDER RACKS 2 STROBES, 1 ON EACH END OF 58" RACK
INCLUDES: 10 CABLE TIES 1 CABLE GLAND 1 UN-CONNECTED TE282080-1 IN BAG



THIS DRAWING IS THE PROPERTY OF ADRIAN STEEL COMPANY AND IS NOT TO BE USED IN ANY MANNER
DETRIMENTAL TO THE INTERESTS OF ADRIAN STEEL COMPANY

TOLERANCES & INSPECTION

UNLESS OTHERWISE SPECIFIED		
ALL BEND ANGLES ARE 90 DEGREES		
ALL DIMENSIONS ARE IN INCHES.		
REFERENCE DIMENSIONS (X.XXX) DO NOT REQUIRE INSPECTION		
FEATURES	HOLES/SLOTS	ANGLES
0.0 = ± .125	0.0 = ± .062	0° = ± 2°
0.00 = ± .062	0.00 = ± .031	0.0° = ± 1°
0.000 = ± .031	0.000 = ± .015	
Material Thickness: per ASTM Std. Weld Callouts per AWS		

RELEASE & REVISIONS

INITIAL ECN: 26041
CURRENT ECN: 26041
ECN DESCRIPTION:
RELEASE TO PRODUCTION
REVISED BY: EMB


PURCHASED
COMPONENT

REFERENCED SUPPLIER AND/OR MANUFACTURER
AAMP
REFERENCED SUPPLIER AND/OR MANUFACTURER PART NUMBER
67614
COLOR (ONLY LIST IF COLOR SPECIFIC)
NO
COMODITY ITEM (Y/N) (YES = ALL DIMENSIONS AND NOTES ARE REFERENCE) (NOTE: DIMENSIONS AND FEATURES MAY VARY FOR A COMODITY ITEM.)
NO

PRINTED DOCUMENT IS UNCONTROLLED

Sheet 1 of 1

PART / PRODUCT IDENTIFICATION

 ADRIAN STEEL®		ADRIAN STEEL COMPANY 906 JAMES STREET, ADRIAN, MI 49221		REVISION LEVEL A
MAT'L USED: PURCHASED		DESIGNED BY: E.BURKE		
DESCRIPTION: STROBE HARN FOR 58" RACK				
WEIGHT (Lbs.): 0.1	SEGMENT CODE: ELE		PART NUMBER: 67614	

PURCHASED
COMPONENT
KEY FEATURES

DESCRIPTION OF REQUIREMENTS
DIMENSIONAL REQUIREMENTS (AS SHOWN ON DRAWING)
N/A
LOAD/RATING REQUIREMENT
N/A
MATERIAL REQUIREMENT
N/A
PACKAGING REQUIREMENT
N/A
OTHER REQUIREMENTS
ECCO STROBE LIGHT: ED3801 WITH EXTERIOR PLUG AND PLAY CONNECTOR



THIS DRAWING IS THE PROPERTY OF ADRIAN STEEL COMPANY AND IS NOT TO BE USED IN ANY MANNER
DETRIMENTAL TO THE INTERESTS OF ADRIAN STEEL COMPANY

TOLERANCES & INSPECTION

UNLESS OTHERWISE SPECIFIED		
ALL BEND ANGLES ARE 90 DEGREES		
ALL DIMENSIONS ARE IN INCHES.		
REFERENCE DIMENSIONS (X.XXX) DO NOT REQUIRE INSPECTION		
FEATURES	HOLES/SLOTS	ANGLES
0.0 = ± .125	0.0 = ± .062	0° = ± 2°
0.00 = ± .062	0.00 = ± .031	0.0° = ± 1°
0.000 = ± .031	0.000 = ± .015	
Material Thickness: per ASTM Std. Weld Callouts per AWS		

RELEASE & REVISIONS

INITIAL ECN: 25921
CURRENT ECN: 25921
ECN DESCRIPTION:
RELEASE TO PRODUCTION
REVISED BY: N/A

PURCHASED
COMPONENT

REFERENCED SUPPLIER AND/OR MANUFACTURER
ECCO
REFERENCED SUPPLIER AND/OR MANUFACTURER PART NUMBER
ED3801A-ADR
COLOR (ONLY LIST IF COLOR SPECIFIC)
AMBER LED/CLEAR LENS
COMODITY ITEM (Y/N) (YES = ALL DIMENSIONS AND NOTES ARE REFERENCE) (NOTE: DIMENSIONS AND FEATURES MAY VARY FOR A COMODITY ITEM.)
NO

PRINTED DOCUMENT IS UNCONTROLLED

Sheet 1 of 1

PART / PRODUCT IDENTIFICATION

	ADRIAN STEEL®		ADRIAN STEEL COMPANY 906 JAMES STREET, ADRIAN, MI 49221	REVISION LEVEL
				A
MAT'L USED:	PURCHASED		DESIGNED BY:	EMB
DESCRIPTION:	ECCO STROBE ED3801A W/CON			
WEIGHT (Lbs.):	0.5	SEGMENT CODE:	EST	PART NUMBER: 67686