

ITEM DESCRIPTION: WIRE TIE, NYLON 40Lb, 8.5" BLACK

MANUFACTURER: WAYTEK, INC. or equivalent
MANUFACTURERS PART NUMBER: 21093M or 21093C

SPECIFICATIONS: STANDARD CABLE TIE
 BLACK, NYLON
 8-1/2" LONG
 TENSILE STRENGTH: 40.0 LBS
 21093M = 1,000 quantity
 21093C = 100 quantity

SPECIAL NOTES: PART NUMBER IS BLACK.

SUPPLIED BY: THIS ITEM IS ADRIAN AVAILABLE!

PURCHASED PRODUCT DATA SHEET (PPDS)

THIS DRAWING/INFORMATION IS THE PROPERTY OF ADRIAN STEEL COMPANY AND IS NOT TO BE USED IN ANY MANNER THAT IS DETRIMENTAL TO THE INTEREST OF ADRIAN STEEL. COPYRIGHTS AND OR PATENTS THAT MAY BE THE PROPERTY OF APPLICABLE OWNERS MAY PROTECT INFORMATION AND/OR DRAWINGS OF SUPPLIED PRODUCTS.



ADRIAN STEEL
VAN AND PICKUP EQUIPMENT

906 JAMES STREET
ADRIAN, MI 49221
517-265-6194
WWW.ADRIANSTEEL.COM



CAUTION
WHEN INSTALLING EQUIPMENT IN OR ON
VEHICLES CHECK FOR FUEL TANKS, FUEL
LINES, CONTROL LINES AND ELECTRICAL
WIRING BEFORE DRILLING! ALWAYS USE
DRILL BITS WITH INTEGRAL STOPS
WHENEVER POSSIBLE!

DRAWN BY
MDG

DATE DRAWN
10/26/2006

ECN NUMBER
18021

ECN DATE
11/13/2015

PART WEIGHT
0.01 LBS.

REV. LEVEL
D

PART NUMBER
13905-0

PART NUMBER

26618-0**ITEM DESCRIPTION: SILICONE, 1oz. TUBE**

SPECIFICATIONS: SU5005 RTV SILICONE
 1oz. TUBE
 CLEAR OR EQUIVILENT
 SELF PIERCING CAP

SPECIAL NOTES:

SUPPLIED BY: THIS ITEM IS ADRIAN AVAILABLE!

PURCHASED PRODUCT DATA SHEET (PPDS)

THIS DRAWING/INFORMATION IS THE PROPERTY OF ADRIAN STEEL COMPANY AND IS NOT TO BE USED IN ANY MANNER THAT IS DETRIMENTAL TO THE INTEREST OF ADRIAN STEEL. COPYRIGHTS AND OR PATENTS THAT MAY BE THE PROPERTY OF APPLICABLE OWNERS MAY PROTECT INFORMATION AND/OR DRAWINGS OF SUPPLIED PRODUCTS.



ADRIAN STEEL
 VAN AND PICKUP EQUIPMENT

**906 JAMES STREET
 ADRIAN, MI 49221
 517-265-6194
 WWW.ADRIANSTEEL.COM**



**WHEN INSTALLING EQUIPMENT IN OR ON
 VEHICLES CHECK FOR FUEL TANKS, FUEL
 LINES, CONTROL LINES AND ELECTRICAL
 WIRING BEFORE DRILLING! ALWAYS USE
 DRILL BITS WITH INTEGRAL STOPS
 WHENEVER POSSIBLE!**

DRAWN BY
 JLC

DATE DRAWN
 7/21/2001

ECN NUMBER
 16551

ECN DATE
 7/22/2014

PART WEIGHT
 0.02 LBS.

REV. LEVEL
 C

PART NUMBER
26618-0

PART NUMBER

26618-0**ITEM DESCRIPTION: SILICONE, 1oz. TUBE**

SPECIFICATIONS: SU5005 RTV SILICONE
1oz. TUBE
CLEAR OR EQUIVILENT
SELF PIERCING CAP

SPECIAL NOTES:

SUPPLIED BY: THIS ITEM IS ADRIAN AVAILABLE!

PURCHASED PRODUCT DATA SHEET (PPDS)

THIS DRAWING/INFORMATION IS THE PROPERTY OF ADRIAN STEEL COMPANY AND IS NOT TO BE USED IN ANY MANNER THAT IS DETRIMENTAL TO THE INTEREST OF ADRIAN STEEL. COPYRIGHTS AND OR PATENTS THAT MAY BE THE PROPERTY OF APPLICABLE OWNERS MAY PROTECT INFORMATION AND/OR DRAWINGS OF SUPPLIED PRODUCTS.



ADRIAN STEEL
VAN AND PICKUP EQUIPMENT

906 JAMES STREET
ADRIAN, MI 49221
517-265-6194
WWW.ADRIANSTEEL.COM



**WHEN INSTALLING EQUIPMENT IN OR ON
VEHICLES CHECK FOR FUEL TANKS, FUEL
LINES, CONTROL LINES AND ELECTRICAL
WIRING BEFORE DRILLING! ALWAYS USE
DRILL BITS WITH INTEGRAL STOPS
WHENEVER POSSIBLE!**

DRAWN BY
JLC

DATE DRAWN
7/21/2001

ECN NUMBER
16551

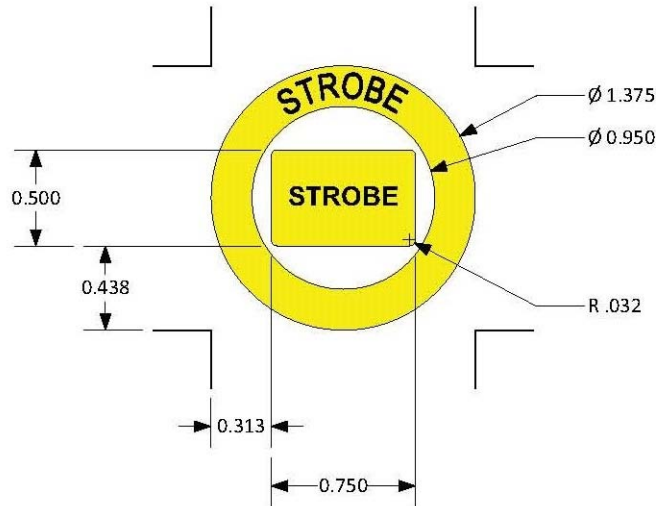
ECN DATE
7/22/2014

PART WEIGHT
0.02 LBS.

REV. LEVEL
C

PART NUMBER
26618-0

ITEM DESCRIPTION: STROBE SWITCH DECAL SET



MANUFACTURER: VANNER

MANUFACTURERS PART NUMBER: TBD

SPECIFICATIONS: (1) Circular Yellow Decal (ID=0.950", OD=1.375") with "STROBE" in black letters
 (1) Rectangular Yellow Decal (H=0.500", L=0.750") with "STROBE" in black letters

SPECIAL NOTES: For round rocker switch (OD=0.780") and Ford Transit Upfitter Switches.

SUPPLIED BY: THIS ITEM IS ADRIAN AVAILABLE!**PURCHASED PRODUCT DATA SHEET (PPDS)**

Page 1 of 1

THIS DRAWING/INFORMATION IS THE PROPERTY OF ADRIAN STEEL COMPANY AND IS NOT TO BE USED IN ANY MANNER THAT IS DETRIMENTAL TO THE INTEREST OF ADRIAN STEEL. COPYRIGHTS AND OR PATENTS THAT MAY BE THE PROPERTY OF APPLICABLE OWNERS MAY PROTECT INFORMATION AND/OR DRAWINGS OF SUPPLIED PRODUCTS.



906 JAMES STREET
 ADRIAN, MI 49221
 517-265-6194
 WWW.ADRIANSTEEL.COM



CAUTION
 WHEN INSTALLING EQUIPMENT IN OR ON VEHICLES CHECK FOR FUEL TANKS, FUEL LINES, CONTROL LINES AND ELECTRICAL WIRING BEFORE DRILLING! ALWAYS USE DRILL BITS WITH INTEGRAL STOPS WHENEVER POSSIBLE!

DRAWN BY
 RJB

DATE DRAWN
 11/15/2017

ECN NUMBER
 XXXX

ECN DATE
 XXXXXX

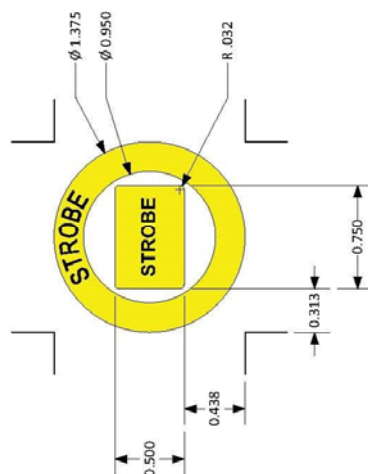
PART WEIGHT
 0.02 LBS.

REV. LEVEL
 A

PART NUMBER
55073

REVISIONS			
REV	DESCRIPTION	DATE	RE/ECO

- NOTES:
1. MATERIAL : .002 YELLOW POLYESTER
 2. ARTWORK FROM D91XXXX-A PAGE 1, PMS BLACK
 3. .001 OVERLAMINATE
 4. ADHESIVE BACKED



VANNER INCORPORATED HILLIARD, OHIO USA		TOL. .x ± .025		TITLE: LABEL, STROBE TXT, .95ID ROUND SWITCH	SHEET 1 OF 1	REV A
		TOL. CABLES .xx ± .015				
TOL. LABEL/ METAL .xxx ± .005		TOL. CABLES .xxx ± .25		DRAWING/ PART NO.		D01XXXX 1 OF 1
DRNDATE MEO 11/14/17		CHKDATE XXX XXXXX/XX		REV		

SCALE: NONE RE/ECO NO.: XXXX

THIS DRAWING AND ALL INFORMATION CONTAINED HEREIN IS THE PROPERTY OF VANNER INC. AND MAY NOT BE COPIED, REPRODUCED OR DIVULGED TO UNAUTHORIZED PERSONS WITHOUT THE EXPRESS WRITTEN CONSENT OF VANNER INC. IT IS PROVIDED SOLELY FOR THE CONVENIENCE OF THE USER AND SHALL BE RETURNED UPON REQUEST.

Page 2 of 1

THIS DRAWING/INFORMATION IS THE PROPERTY OF ADRIAN STEEL COMPANY AND IS NOT TO BE USED IN ANY MANNER THAT IS DETRIMENTAL TO THE INTEREST OF ADRIAN STEEL. COPYRIGHTS AND OR PATENTS THAT MAY BE THE PROPERTY OF APPLICABLE OWNERS MAY PROTECT INFORMATION AND/OR DRAWINGS OF SUPPLIED PRODUCTS.



906 JAMES STREET
ADRIAN, MI 49221
517-265-6194
WWW.ADRIANSTEEL.COM



CAUTION

WHEN INSTALLING EQUIPMENT IN OR ON VEHICLES CHECK FOR FUEL TANKS, FUEL LINES, CONTROL LINES AND ELECTRICAL WIRING BEFORE DRILLING! ALWAYS USE DRILL BITS WITH INTEGRAL STOPS WHENEVER POSSIBLE!

DRAWN BY
RJB

DATE DRAWN
11/15/2017

ECN NUMBER
XXXX

ECN DATE
XXXXXXX

PART WEIGHT
0.02 LBS.

REV. LEVEL
A

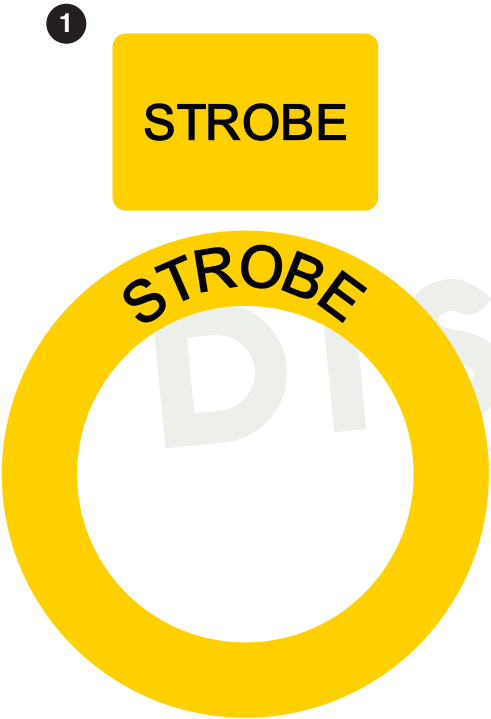
PART NUMBER
55073

PART NUMBER
55073

LOC | QTY | Part # | Description | Size

Material: IJ39 | Lamination: 8518

1 1: 6039597.Strobe Switch-1.52" x 2.07"



Note: Part will not be weeded, just cut.

Kit# 8001872 | Adrian Steel Part # 55073

06/01/2023 • JY
© 2022 DISTYLL Graphics Solutions. All rights reserved.

ASCO REV.1 6/14/2023

<div><div>DISTYLL</div><div>GRAPHIC SOLUTIONS</div><div>FINAL DESIGN</div></div>	CLIENT NAME:		Switch Decals		O-ID: O15319-1
	Adrian Steel				Rev #: XXXX
	DATE:	DESIGNER:			Opt #: A
	O5/31/2023	TRN			

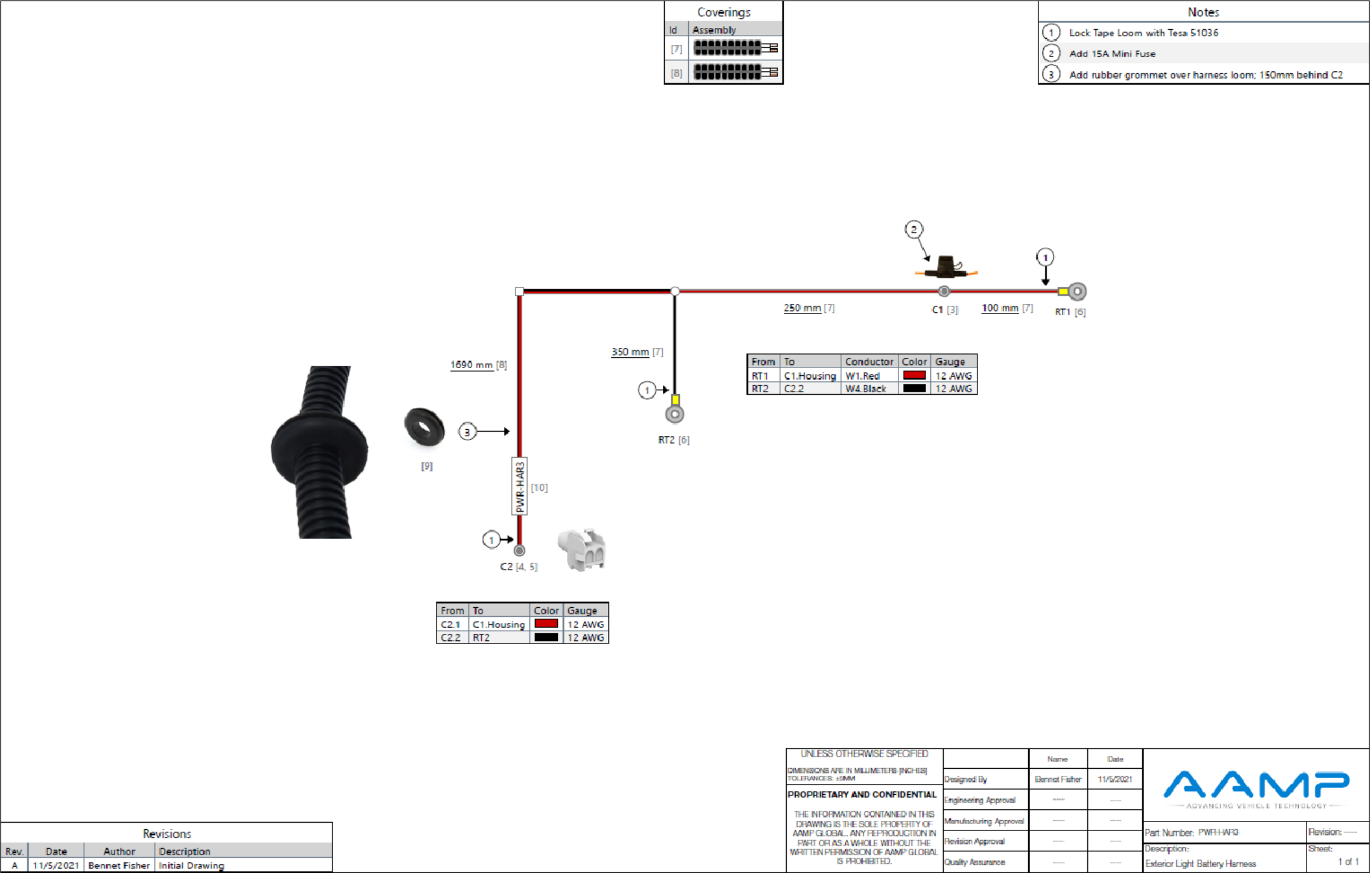
Please check information to confirm accurate vehicle specifications.

CLEANING INSTRUCTIONS All surfaces must be considered contaminated. Clean the vehicle surface immediately before applying the film. Dust and other contaminates can collect quickly on the surface and prevent the film from adhering properly. Even a freshly painted surface can collect dust before graphics can be applied.

For the best success with the films recommended for vehicle graphics, always apply the graphics when the air and vehicle surface are both above 60°F (16°C) and below 90°F (32°C) before beginning the installation.

PURCHASED COMPONENT KEY FEATURES

DESCRIPTION OF REQUIREMENTS
DIMENSIONAL REQUIREMENTS (AS SHOWN ON DRAWING)
N/A
LOAD/RATING REQUIREMENT
N/A
MATERIAL REQUIREMENT
N/A
PACKAGING REQUIREMENT
N/A
OTHER REQUIREMENTS



THIS DRAWING IS THE PROPERTY OF ADRIAN STEEL COMPANY AND IS NOT TO BE USED IN ANY MANNER DETRIMENTAL TO THE INTERESTS OF ADRIAN STEEL COMPANY

TOLERANCES & INSPECTION	RELEASE & REVISIONS
UNLESS OTHERWISE SPECIFIED ALL BEND ANGLES ARE 90 DEGREES ALL DIMENSIONS ARE IN INCHES. REFERENCE DIMENSIONS (X.XXX) DO NOT REQUIRE INSPECTION	INITIAL ECN: 25378 CURRENT ECN: 25378 ECN DESCRIPTION: RELEASE FOR PRODUCTION REVISED BY:
FEATURES 0.0 = ± .125 0.00 = ± .062 0.000 = ± .031 Material Thickness: per ASTM Std. Weld Callouts per AWS	HOLES/SLOTS 0.0 = ± .062 0.00 = ± .031 0.000 = ± .015
ANGLES 0° = ± 2° 0.0° = ± 1°	

PURCHASED COMPONENT

REFERENCED SUPPLIER AND/OR MANUFACTURER
AAMP GLOBAL

REFERENCED SUPPLIER AND/OR MANUFACTURER PART NUMBER
67094 OR PWR-HAR3

COLOR (ONLY LIST IF COLOR SPECIFIC)
NO

COMODITY ITEM (Y/N) (YES = ALL DIMENSIONS AND NOTES ARE REFERENCE)
(NOTE: DIMENSIONS AND FEATURES MAY VARY FOR A COMODITY ITEM.)
NO

PRINTED DOCUMENT IS UNCONTROLLED

Sheet 1 of 1

PART / PRODUCT IDENTIFICATION

ADRIAN STEEL[®]

ADRIAN STEEL COMPANY
906 JAMES STREET, ADRIAN, MI 49221

MAT'L USED: **PURCHASED**DESIGNED BY: **E.BURKE**

DESCRIPTION: **POWER HARNESS EXTERIOR 3**

WEIGHT (Lbs.): **0.2**SEGMENT CODE: **ELE**PART NUMBER: **67094**

REVISION LEVEL
A

PURCHASED
COMPONENT
KEY FEATURES

DESCRIPTION OF REQUIREMENTS
DIMENSIONAL REQUIREMENTS (AS SHOWN ON DRAWING)
N/A
LOAD/RATING REQUIREMENT
N/A
MATERIAL REQUIREMENT
N/A
PACKAGING REQUIREMENT
N/A
OTHER REQUIREMENTS



THIS DRAWING IS THE PROPERTY OF ADRIAN STEEL COMPANY AND IS NOT TO BE USED IN ANY MANNER
DETRIMENTAL TO THE INTERESTS OF ADRIAN STEEL COMPANY

TOLERANCES & INSPECTION

UNLESS OTHERWISE SPECIFIED		
ALL BEND ANGLES ARE 90 DEGREES		
ALL DIMENSIONS ARE IN INCHES.		
REFERENCE DIMENSIONS (X.XXX) DO NOT REQUIRE INSPECTION		
FEATURES	HOLES/SLOTS	ANGLES
0.0 = ± .125	0.0 = ± .062	0° = ± 2°
0.00 = ± .062	0.00 = ± .031	0.0° = ± 1°
0.000 = ± .031	0.000 = ± .015	
Material Thickness: per ASTM Std. Weld Callouts per AWS		

RELEASE & REVISIONS

INITIAL ECN: 25378
CURRENT ECN: 25378
ECN DESCRIPTION:
RELEASE FOR PRODUCTION
REVISED BY:


PURCHASED
COMPONENT

REFERENCED SUPPLIER AND/OR MANUFACTURER
AAMP GLOBAL
REFERENCED SUPPLIER AND/OR MANUFACTURER PART NUMBER
SSW-HAR2 OR 67098
COLOR (ONLY LIST IF COLOR SPECIFIC)
COMODITY ITEM (Y/N) (YES = ALL DIMENSIONS AND NOTES ARE REFERENCE) (NOTE: DIMENSIONS AND FEATURES MAY VARY FOR A COMODITY ITEM.)
NO

PRINTED DOCUMENT IS UNCONTROLLED

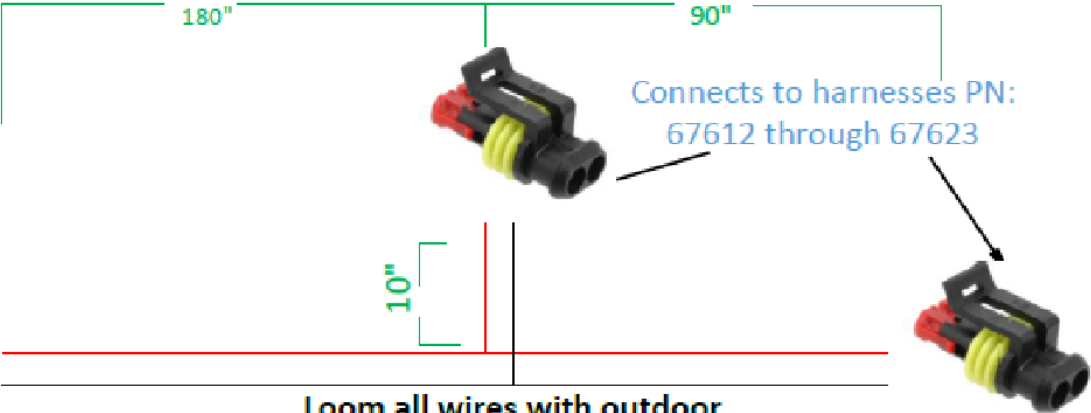
Sheet 1 of 1

PART / PRODUCT IDENTIFICATION

		ADRIAN STEEL®		ADRIAN STEEL COMPANY 906 JAMES STREET, ADRIAN, MI 49221		REVISION LEVEL A	
MAT'L USED:		PURCHASED		DESIGNED BY:		E.BURKE	
DESCRIPTION:		SWITCH HARNESS 2 EXTERIOR LIGHTING					
WEIGHT (Lbs.): 0.2		SEGMENT CODE: ELE		PART NUMBER: 67098			

<div><div>PURCHASED COMPONENT KEY FEATURES</div></div>	
DESCRIPTION OF REQUIREMENTS	
DIMENSIONAL REQUIREMENTS (AS SHOWN ON DRAWING)	
N/A	
LOAD/RATING REQUIREMENT	
N/A	
MATERIAL REQUIREMENT	
N/A	
PACKAGING REQUIREMENT	
N/A	
OTHER REQUIREMENTS	
<div>PLUG AND PLAY BODY HARNESS 3 FOR LADDER RACK LIGHTING</div> <div>INCLUDES:<div>2 CAPS FOR EXTERIOR CONNECTORS</div><div>20 CABLE TIES</div><div>5 WIRE TIE WITH CHRISTMAS TREES</div><div>7 STICKEY BACKED CABLE TIE HOLDERS</div><div>7 EDGE CLIP ZIP TIES</div><div>7 NYLON PLASTIC LOOP CLAMPS</div><div>7 PHILLIPS HEAD TEK SCREWS</div></div>	

#1



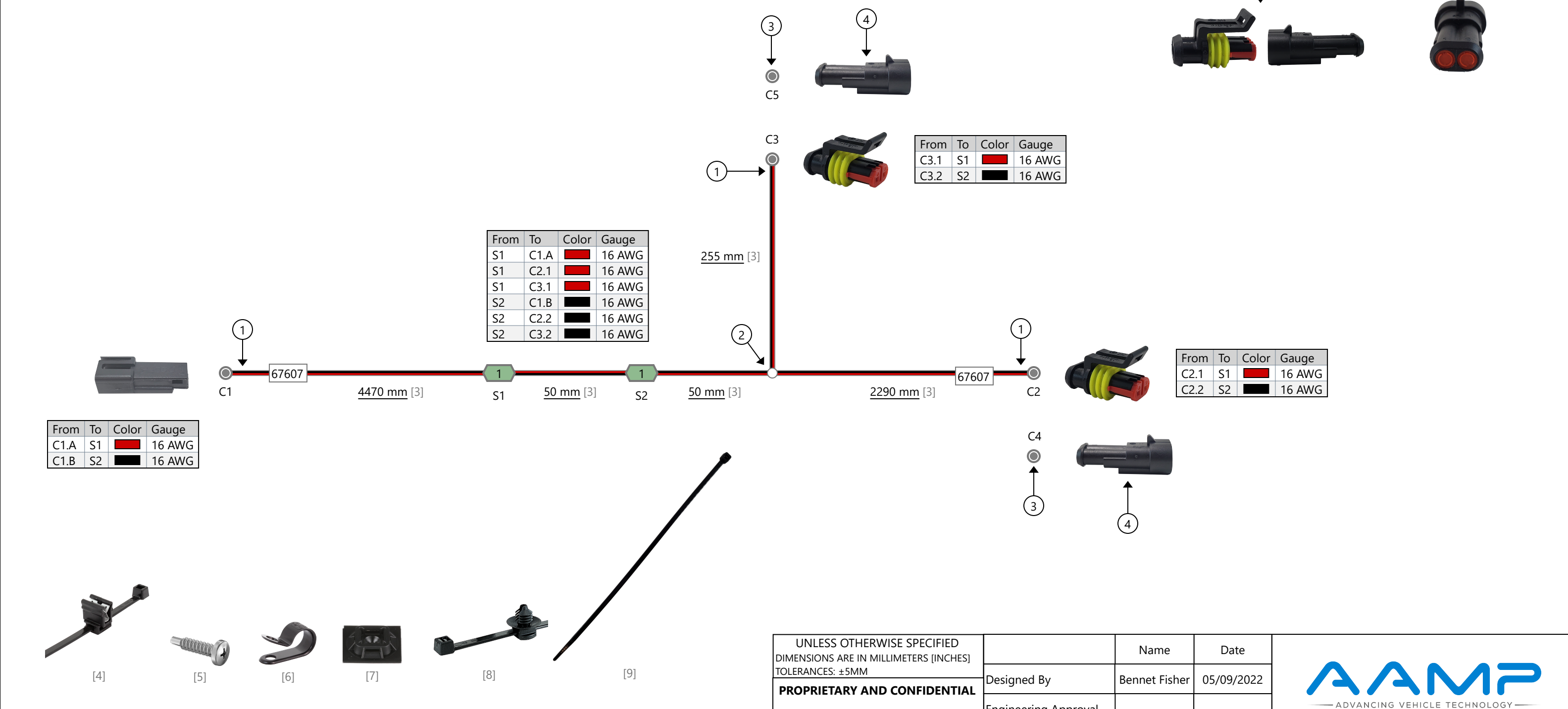
Loom all wires with outdoor rated loom, and use all weather proof connectors

THIS DRAWING IS THE PROPERTY OF ADRIAN STEEL COMPANY AND IS NOT TO BE USED IN ANY MANNER DETRIMENTAL TO THE INTERESTS OF ADRIAN STEEL COMPANY		PRINTED DOCUMENT IS UNCONTROLLED		Sheet 1 of 1	
TOLERANCES & INSPECTION		PART / PRODUCT IDENTIFICATION			
UNLESS OTHERWISE SPECIFIED ALL BEND ANGLES ARE 90 DEGREES ALL DIMENSIONS ARE IN INCHES. REFERENCE DIMENSIONS (X.XXX) DO NOT REQUIRE INSPECTION		PURCHASED COMPONENT		ADRIAN STEEL® ADRIAN STEEL COMPANY 906 JAMES STREET, ADRIAN, MI 49221	
INITIAL ECN: 26041		REFERENCED SUPPLIER AND/OR MANUFACTURER AAMP		REVISION LEVEL A	
CURRENT ECN: 26041		REFERENCED SUPPLIER AND/OR MANUFACTURER PART NUMBER 67607		DESIGNED BY: E.BURKE	
ECN DESCRIPTION:		COLOR (ONLY LIST IF COLOR SPECIFIC)		MATERIAL USED: PURCHASED	
RELEASE TO PRODUCTION		COMODITY ITEM (Y/N) (YES = ALL DIMENSIONS AND NOTES ARE REFERENCE) (NOTE: DIMENSIONS AND FEATURES MAY VARY FOR A COMODITY ITEM.) NO		DESCRIPTION: BODY HARN 3 EXT P&P	
REVISED BY: EMB		WEIGHT (Lbs.): 0.1		SEGMENT CODE: ELE	
				PART NUMBER: 67607	

Bill of Materials			
Id	Type	Part Number	Quantity
1	Wire	16 AWG Red GXL	7215 mm
2	Wire	16 AWG Black GXL	7165 mm
3	Corrugated Tubing	0.25" Nylon Split Wall	7115 mm
4	Edge Clip Cable Tie	156-00539	7
5	Fastener	90415A330	7
6	Cable Clamp		7
7	Cable Tie Mount		7
8	Cable Tie with Mount	156-00157	5
9	Cable Tie		20

Coverings	
Id	Assembly
[3]	

Notes	
①	Lock Tape Loom with Tesa 51036
②	Lock Tape Loom with Tesa 51036 on both side of wire breakout
③	Plug C4 into C2; Plug C5 into C3
④	C4 & C5 Cavities are sealed

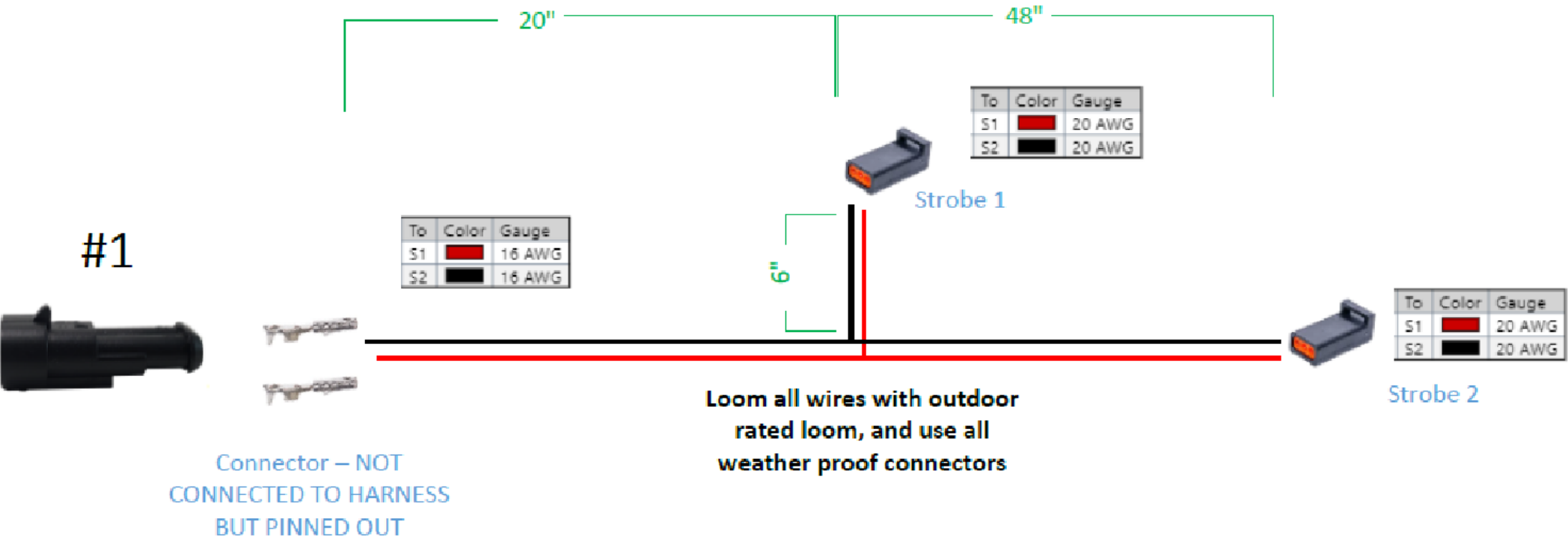


Revisions			
Rev.	Date	Author	Description
	5/9/2022	Bennet Fisher	Initial Drawing
	7/14/2022	Bennet Fisher	Updated Wire Lengths to Connector C2 and C3
A	12/15/2022	Bennet Fisher	Updated Wire Lengths to Connector C2 and C3; Added loom for C2; Added Connector "Caps" with Seals; Added Second Harness Label

UNLESS OTHERWISE SPECIFIED DIMENSIONS ARE IN MILLIMETERS [INCHES] TOLERANCES: ±5MM PROPRIETARY AND CONFIDENTIAL THE INFORMATION CONTAINED IN THIS DRAWING IS THE SOLE PROPERTY OF AAMP GLOBAL. ANY REPRODUCTION IN PART OR AS A WHOLE WITHOUT THE WRITTEN PERMISSION OF AAMP GLOBAL IS PROHIBITED.		Name	Date		
	Designed By	Bennet Fisher	05/09/2022		
	Engineering Approval				
	Manufacturing Approval				
	Revision Approval			Part Number: 67607_	
Quality Assurance				Description: Strobe Extension Harness	
				Revision: A	
				Sheet: 1	

PURCHASED
COMPONENT
KEY FEATURES

DESCRIPTION OF REQUIREMENTS
DIMENSIONAL REQUIREMENTS (AS SHOWN ON DRAWING)
N/A
LOAD/RATING REQUIREMENT
N/A
MATERIAL REQUIREMENT
N/A
PACKAGING REQUIREMENT
N/A
OTHER REQUIREMENTS
PLUG AND PLAY HARNESS FOR LADDER RACKS 2 STROBES, 1 ON EACH END OF 58" RACK
INCLUDES: 10 CABLE TIES 1 CABLE GLAND 1 UN-CONNECTED TE282080-1 IN BAG



THIS DRAWING IS THE PROPERTY OF ADRIAN STEEL COMPANY AND IS NOT TO BE USED IN ANY MANNER
DETRIMENTAL TO THE INTERESTS OF ADRIAN STEEL COMPANY

TOLERANCES & INSPECTION

UNLESS OTHERWISE SPECIFIED		
ALL BEND ANGLES ARE 90 DEGREES		
ALL DIMENSIONS ARE IN INCHES.		
REFERENCE DIMENSIONS (X.XXX) DO NOT REQUIRE INSPECTION		
FEATURES	HOLES/SLOTS	ANGLES
0.0 = ± .125	0.0 = ± .062	0° = ± 2°
0.00 = ± .062	0.00 = ± .031	0.0° = ± 1°
0.000 = ± .031	0.000 = ± .015	
Material Thickness: per ASTM Std. Weld Callouts per AWS		

RELEASE & REVISIONS

INITIAL ECN: 26041
CURRENT ECN: 26041
ECN DESCRIPTION:
RELEASE TO PRODUCTION
REVISED BY: EMB


PURCHASED
COMPONENT

REFERENCED SUPPLIER AND/OR MANUFACTURER
AAMP
REFERENCED SUPPLIER AND/OR MANUFACTURER PART NUMBER
67614
COLOR (ONLY LIST IF COLOR SPECIFIC)
COMODITY ITEM (Y/N) (YES = ALL DIMENSIONS AND NOTES ARE REFERENCE) (NOTE: DIMENSIONS AND FEATURES MAY VARY FOR A COMODITY ITEM.)
NO

PRINTED DOCUMENT IS UNCONTROLLED

Sheet 1 of 1

PART / PRODUCT IDENTIFICATION

 ADRIAN STEEL®		ADRIAN STEEL COMPANY 906 JAMES STREET, ADRIAN, MI 49221	REVISION LEVEL A
MAT'L USED: PURCHASED		DESIGNED BY: E.BURKE	
DESCRIPTION: STROBE HARN FOR 58" RACK			
WEIGHT (Lbs.): 0.1	SEGMENT CODE: ELE	PART NUMBER: 67614	


PURCHASED
COMPONENT
KEY FEATURES

DESCRIPTION OF REQUIREMENTS
DIMENSIONAL REQUIREMENTS (AS SHOWN ON DRAWING) N/A
LOAD/RATING REQUIREMENT N/A
MATERIAL REQUIREMENT N/A
PACKAGING REQUIREMENT N/A
OTHER REQUIREMENTS PLUG AND PLAY HARNESS FOR LADDER RACKS 2 STROBES ON THE END AND 1 BEACON IN THE MIDDLE OF 58" RACK INCLUDES: 10 CABLE TIES 1 CABLE GLAND 1 UN-CONNECTED TE282080-1 IN BAG 1 CAP FOR EXTERIOR CONNECTOR

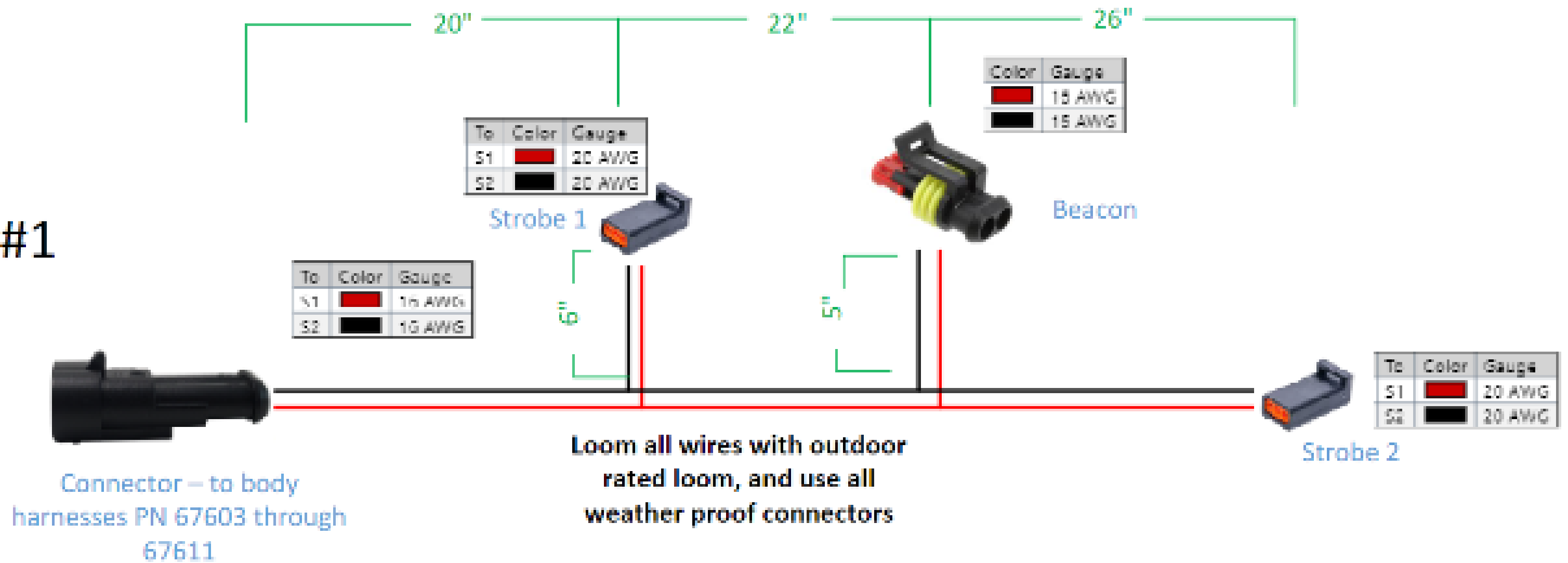


TOLERANCES & INSPECTION	RELEASE & REVISIONS
UNLESS OTHERWISE SPECIFIED ALL BEND ANGLES ARE 90 DEGREES ALL DIMENSIONS ARE IN INCHES. REFERENCE DIMENSIONS (X.XXX) DO NOT REQUIRE INSPECTION	INITIAL ECN: 26041 CURRENT ECN: 26041 ECN DESCRIPTION: RELEASE TO PRODUCTION
FEATURES 0.0 = ± .125 0.00 = ± .062 0.000 = ± .031 Material Thickness: per ASTM Std. Weld Callouts per AWS	REVISD BY: EMB

PURCHASED COMPONENT
REFERENCED SUPPLIER AND/OR MANUFACTURER AAMP
REFERENCED SUPPLIER AND/OR MANUFACTURER PART NUMBER 67618 COLOR (ONLY LIST IF COLOR SPECIFIC)
COMODITY ITEM (Y/N) (YES = ALL DIMENSIONS AND NOTES ARE REFERENCE) (NOTE: DIMENSIONS AND FEATURES MAY VARY FOR A COMODITY ITEM.) NO

PRINTED DOCUMENT IS UNCONTROLLED			Sheet 1 of 1
PART / PRODUCT IDENTIFICATION			
 ADRIAN STEEL®		ADRIAN STEEL COMPANY 906 JAMES STREET, ADRIAN, MI 49221	
MAT'L USED: PURCHASED		DESIGNED BY: E.BURKE	REVISION LEVEL A
DESCRIPTION: STROBE/BCN HARN 58" RACK			
WEIGHT (Lbs.): 0.1	SEGMENT CODE: ELE	PART NUMBER: 67618	

#1



PURCHASED
COMPONENT
KEY FEATURES

DESCRIPTION OF REQUIREMENTS
DIMENSIONAL REQUIREMENTS (AS SHOWN ON DRAWING)
N/A
LOAD/RATING REQUIREMENT
N/A
MATERIAL REQUIREMENT
N/A
PACKAGING REQUIREMENT
N/A
OTHER REQUIREMENTS
ECCO STROBE LIGHT: ED3801 WITH EXTERIOR PLUG AND PLAY CONNECTOR



THIS DRAWING IS THE PROPERTY OF ADRIAN STEEL COMPANY AND IS NOT TO BE USED IN ANY MANNER
DETRIMENTAL TO THE INTERESTS OF ADRIAN STEEL COMPANY

TOLERANCES & INSPECTION

UNLESS OTHERWISE SPECIFIED		
ALL BEND ANGLES ARE 90 DEGREES		
ALL DIMENSIONS ARE IN INCHES.		
REFERENCE DIMENSIONS (X.XXX) DO NOT REQUIRE INSPECTION		
FEATURES	HOLES/SLOTS	ANGLES
0.0 = ± .125	0.0 = ± .062	0° = ± 2°
0.00 = ± .062	0.00 = ± .031	0.0° = ± 1°
0.000 = ± .031	0.000 = ± .015	
Material Thickness: per ASTM Std. Weld Callouts per AWS		

RELEASE & REVISIONS

INITIAL ECN: 25921
CURRENT ECN: 25921
ECN DESCRIPTION:
RELEASE TO PRODUCTION
REVISED BY: N/A


PURCHASED
COMPONENT

REFERENCED SUPPLIER AND/OR MANUFACTURER
ECCO
REFERENCED SUPPLIER AND/OR MANUFACTURER PART NUMBER
ED3801A-ADR
COLOR (ONLY LIST IF COLOR SPECIFIC)
AMBER LED/CLEAR LENS
COMODITY ITEM (Y/N) (YES = ALL DIMENSIONS AND NOTES ARE REFERENCE) (NOTE: DIMENSIONS AND FEATURES MAY VARY FOR A COMODITY ITEM.)
NO

PRINTED DOCUMENT IS UNCONTROLLED

Sheet 1 of 1

PART / PRODUCT IDENTIFICATION

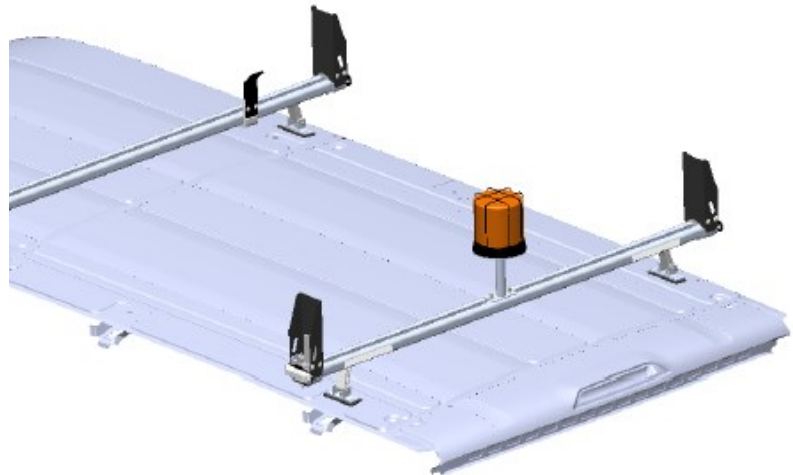
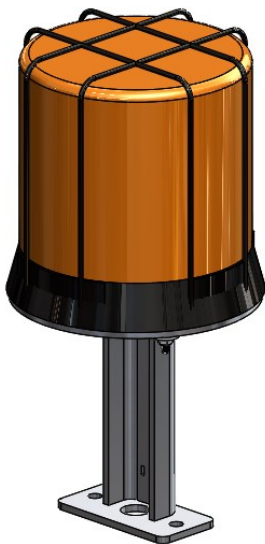
		ADRIAN STEEL®		ADRIAN STEEL COMPANY 906 JAMES STREET, ADRIAN, MI 49221		REVISION LEVEL A	
MAT'L USED: PURCHASED				DESIGNED BY: EMB			
DESCRIPTION: ECCO STROBE ED3801A W/CON							
WEIGHT (Lbs.): 0.5		SEGMENT CODE: EST			PART NUMBER: 67686		

Introduction / Comments:

Dealer Instructions for 70970

Note:

Read all instructions prior to installation. Review the Adrian Steel **GENERAL PRECAUTIONS PAGES (56638)** before attempting installation. Only personnel familiar with using electrical best practices should perform this install. Reference **ELECTRICAL BEST PRACTICES MANUAL (54479)** before attempting installation.



Dealer Instructions For 70970

Figure 15.1

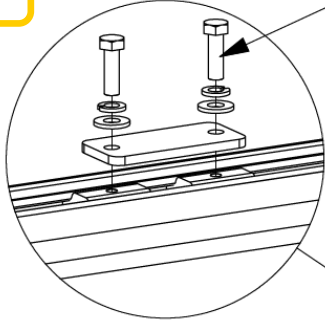


Figure 15.2

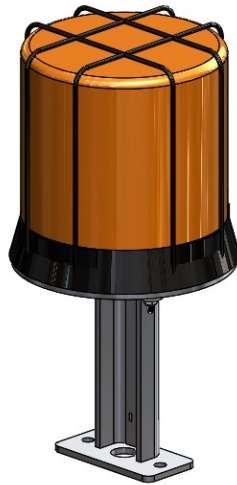
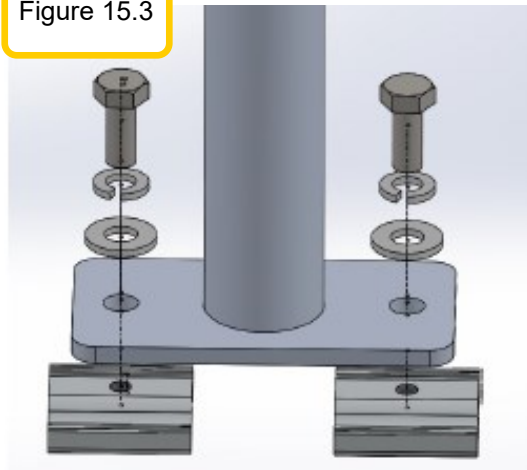


Figure 15.3



Step 1:

Locate the ladder rack rear cross bow center. There will be a metal plate fastened down with bolts, onto 2 spacers. Remove the top metal plate by removing the two bolts. Be careful not to lose the bolts or the slides in the rail, under the ware strip. Figure 15.1.

Now grab the beacon/mount assembly. Figure 15.2.

Assemble the beacon mount feet by inserting the bolt (FAS0799) through the lock washer (FAS0588) then flat washer (FAS0552) then through the foot into the slide. Do not tighten down at this point. Figure 15.3.

Step 2: Connect the beacon harness connector to the beacon. You will need to remove the cap on the beacon harness.

Tighten the bolts once you have positioned the beacon (as centered on the rail as possible). Figure 15.4.

Figure 15.4



Double check the functionality of the lights and switches.