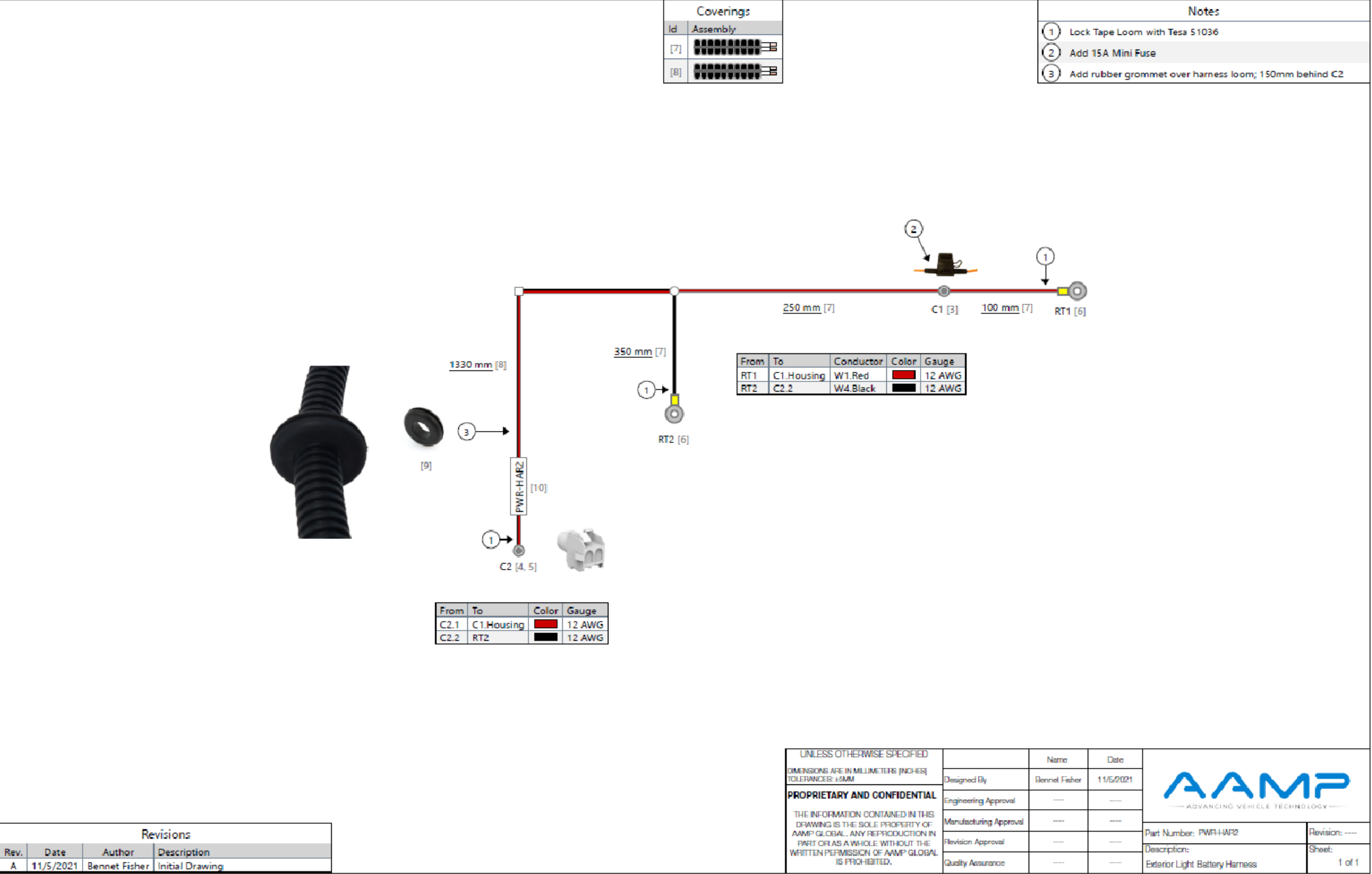


PURCHASED  
COMPONENT  
KEY FEATURES

DESCRIPTION OF REQUIREMENTS
DIMENSIONAL REQUIREMENTS (AS SHOWN ON DRAWING)
N/A
LOAD/RATING REQUIREMENT
N/A
MATERIAL REQUIREMENT
N/A
PACKAGING REQUIREMENT
N/A
OTHER REQUIREMENTS



THIS DRAWING IS THE PROPERTY OF ADRIAN STEEL COMPANY AND IS NOT TO BE USED IN ANY MANNER  
DETRIMENTAL TO THE INTERESTS OF ADRIAN STEEL COMPANY

TOLERANCES & INSPECTION	RELEASE & REVISIONS
UNLESS OTHERWISE SPECIFIED ALL BEND ANGLES ARE 90 DEGREES ALL DIMENSIONS ARE IN INCHES. REFERENCE DIMENSIONS (X.XXX) DO NOT REQUIRE INSPECTION	INITIAL ECN: 25378 CURRENT ECN: 25378 ECN DESCRIPTION: RELEASE FOR PRODUCTION REVISED BY:
FEATURES 0.0 = ± .125 0.00 = ± .062 0.000 = ± .031 Material Thickness: per ASTM Std. Weld Callouts per AWS	HOLES/SLOTS 0.0 = ± .062 0.00 = ± .031 0.000 = ± .015
ANGLES 0° = ± 2° 0.0° = ± 1°	

PURCHASED  
COMPONENT

REFERENCED SUPPLIER AND/OR MANUFACTURER  
AAMP GLOBAL

REFERENCED SUPPLIER AND/OR MANUFACTURER PART NUMBER  
67093 OR PWR-HAR2

COLOR (ONLY LIST IF COLOR SPECIFIC)

COMODITY ITEM (Y/N) (YES = ALL DIMENSIONS AND NOTES ARE REFERENCE)  
(NOTE: DIMENSIONS AND FEATURES MAY VARY FOR A COMODITY ITEM.)  
NO

PRINTED DOCUMENT IS UNCONTROLLED

Sheet 1 of 1

PART / PRODUCT IDENTIFICATION		
<div><div></div><div><b>ADRIAN STEEL</b><sup>®</sup></div></div>		REVISION LEVEL <b>A</b>
ADRIAN STEEL COMPANY 906 JAMES STREET, ADRIAN, MI 49221		
MAT'L USED: <b>PURCHASED</b>	DESIGNED BY: <b>E.BURKE</b>	
DESCRIPTION: <b>POWER HARNESS EXTERIOR 2</b>		
WEIGHT (Lbs.): <b>0.2</b>	SEGMENT CODE: <b>ELE</b>	PART NUMBER: <b>67093</b>

