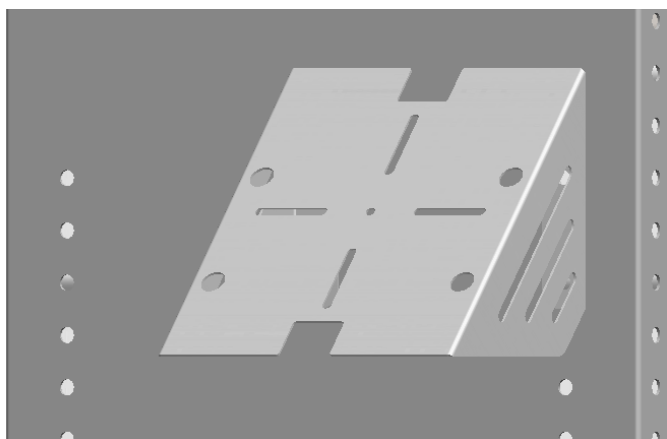


CHARGER MOUNT, SINGLE



CHARGER MOUNT SHOWN MOUNTED TO A
SHELVING UNIT FOR REFERENCE ONLY.



CHARGER IS SHOWN FOR REFERENCE ONLY.
CHARGER NOT INCLUDED.

PRODUCT FEATURES

This single charger mount can be installed anywhere that is desired. Drilling may be required. The mount is designed to accommodate a wide variety of chargers, but may not support all manufacturer's mounting positions. If needed, more holes can be drilled to mount other charger options.

PRODUCT WEIGHT
2.31 LBS

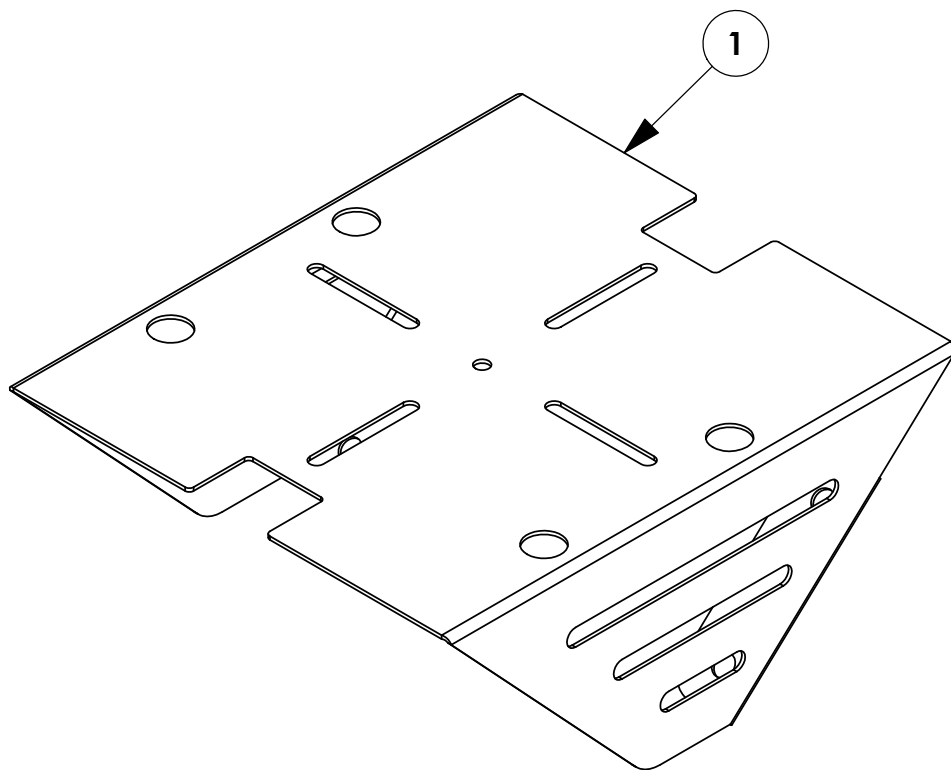
WIDTH x DEPTH x HEIGHT
6.5" x 5.3" x 7.5"

CAPACITY
1 CHARGER

COLOR
GRAY

CATALOG NUMBER
66241

<i>INSTR. NUMBER</i> : 66242	<i>PG:</i> 1	<i>REV:</i> B	<i>ITEM NO.</i>	<i>PART NUMBER</i>	<i>DESCRIPTION</i>	<i>QTY.</i>
			1	66240-G	CHARGER MOUNT, SINGLE, GRAY	1
<i>PART NUMBER</i> : 66241						
<i>PART DESC.</i> : CHARGER MOUNT,SINGLE,KIT						



GET TO KNOW THE VEHICLE - AT THE BEGINNING OF ANY INSTALLATION, CHECK THE LOCATION OF THE FUEL TANK, FUEL LINES, BRAKE LINES, HIGH VOLTAGE BATTERIES AND WIRING HARNESSSES TO AVOID INJURY OR PROPERTY DAMAGE FROM TOOL CONTACT.

SEAL ALL EXTERIOR HOLES - ALL INSTALLATION HOLES SHOULD BE SEALED WITH BUTYL TAPE OR SILICON TO PREVENT WATER AND EXHAUST GASES FROM ENTERING THE VEHICLE.

CONTROL DRILL DEPTH - TO AVOID DAMAGE TO THE VEHICLE, USE A DRILL STOP OR CLEARED STEP BIT WHEN DRILLING INSTALLATION HOLES.

ALWAYS ADD PRIMER - WHEN ADDING INSTALLATION HOLES BE SURE TO USE A SELF-ETCHING PRIMER TO PREVENT CORROSION, FASTENER FAILURE AND INJURY.

MOUNTING POINTS MUST HAVE METAL-TO-METAL CONTACT - USE PROVIDED MOUNTING SPACERS TO ACCOMMODATE FOR VEHICLE FEATURES, CARPET OR SUBFLOORS.

PROVIDE CLEARANCE FOR SPACERS - IF THE INSTALLATION VEHICLE CONTAINS A CARPET OR SUBFLOOR, USE A 1-3/16" DIAMETER CARPET CUTTER (P/N: 31183-0) AT ALL MOUNTING LOCATIONS TO OPEN UP ROOM FOR SPACERS.

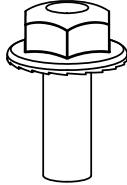
CHECK SPACER ORIENTATION - BE SURE THAT THE INDENT IN THE SPACER COVERS THE PLUSNUT HEAD; THIS ENSURES THE MOST METAL-TO-METAL CONTACT AND REDUCES VIBRATION.

PLUSNUT INSTALLATION - A PLUSNUT GUN IS RECOMMENDED FOR PLUSNUT INSTALLATION FOR ITS PRODUCTION SPEED. HOWEVER, A PLUSNUT SETTING TOOL CAN ALSO BE USED (P/N: 22200-0).

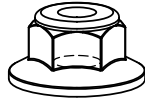
THRU-BOLT CLEARANCE - WHEN USING A THRU-BOLT AT ANY MOUNTING LOCATION, BE SURE THAT YOUR HOLE HAS 1/16" CLEARANCE.

FASTENERS USED

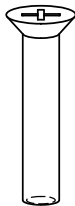
FAS0018
SCREW,HFLNG
1/4-20X.62 ZP
QTY: 04



FAS0055
NUT,HEX NLK FLG
1/4-20 ZP
QTY: 04



FAS0032
SCREW,FHP
10-24X1.0 ZP
QTY: 04



FAS0029
NUT,HEX NLK
10-24 ZP
QTY: 04



13905-0
WIRE TIE
8.5" BLACK
QTY: 02



STEP 1 - MOUNT CHARGER TO CHARGER MOUNT



USE FAS0032 AND FAS0029
(2 PLACES)
PHILLIPS SCREWDRIVER
3/8" SOCKET

CHARGER SHOWN FOR REFERENCE ONLY, NOT INCLUDED.

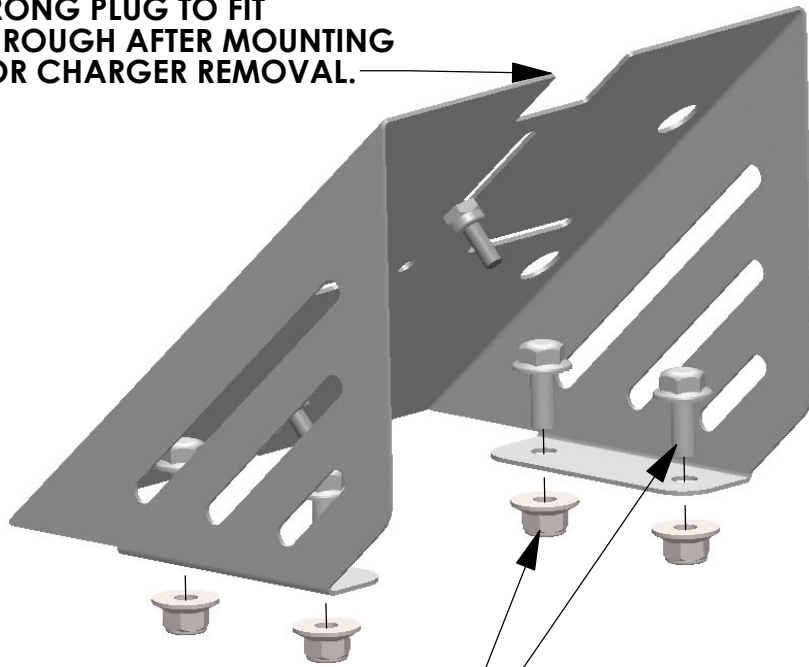


TIGHTEN NUT ON SCREW TO SET DISTANCE UNTIL
CHARGER SLIDES SNUG OVER SCREW HEADS.

MOUNTING LOCATIONS

STEP 2 - MOUNT CHARGER MOUNT TO MOUNT

CUTOUTS ARE FOR A TWO PRONG PLUG TO FIT THROUGH AFTER MOUNTING FOR CHARGER REMOVAL.



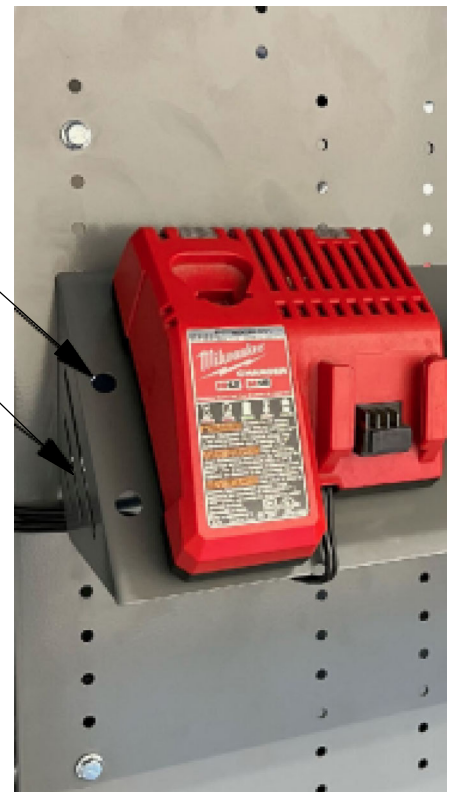
USE FAS0018 AND FAS0055
(4 PLACES)
7/16" WRENCH
7/16" SOCKET

MAY NEED TO DRILL 9/32" HOLE DEPENDING ON MOUNTING LOCATION

SHOWN MOUNTED TO SHELVING END PANEL AS REFERENCE

PHILLIPS SCREWS CAN BE USED (NOT INCLUDED) IN PLACE OF HEX HEADS. USE ACCESS HOLES FOR SCREWDRIVER PASS THRU.

IF NEEDED, USE PROVIDED ZIP TIES TO ATTACH CORD TO SLOT.



INSTALLATION IS COMPLETE