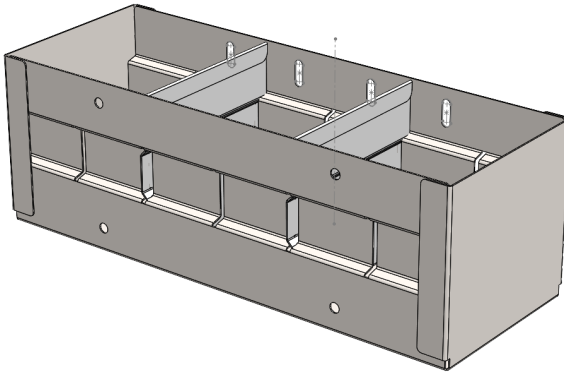




ADRIAN STEEL

Cargo Management Solutions for Commercial Vehicles

Metal Solvent tray 14" x 5.2" x 4.75



PRODUCT WEIGHT

4 lbs

WIDTH x DEPTH x HEIGHT

14" x 5.2" x 4.75"

CAPACITY

**8lbs. per tray max
Evenly distributed**

COLOR

**Gray tray, dividers
galvanized**

CATALOG NUMBER

66243

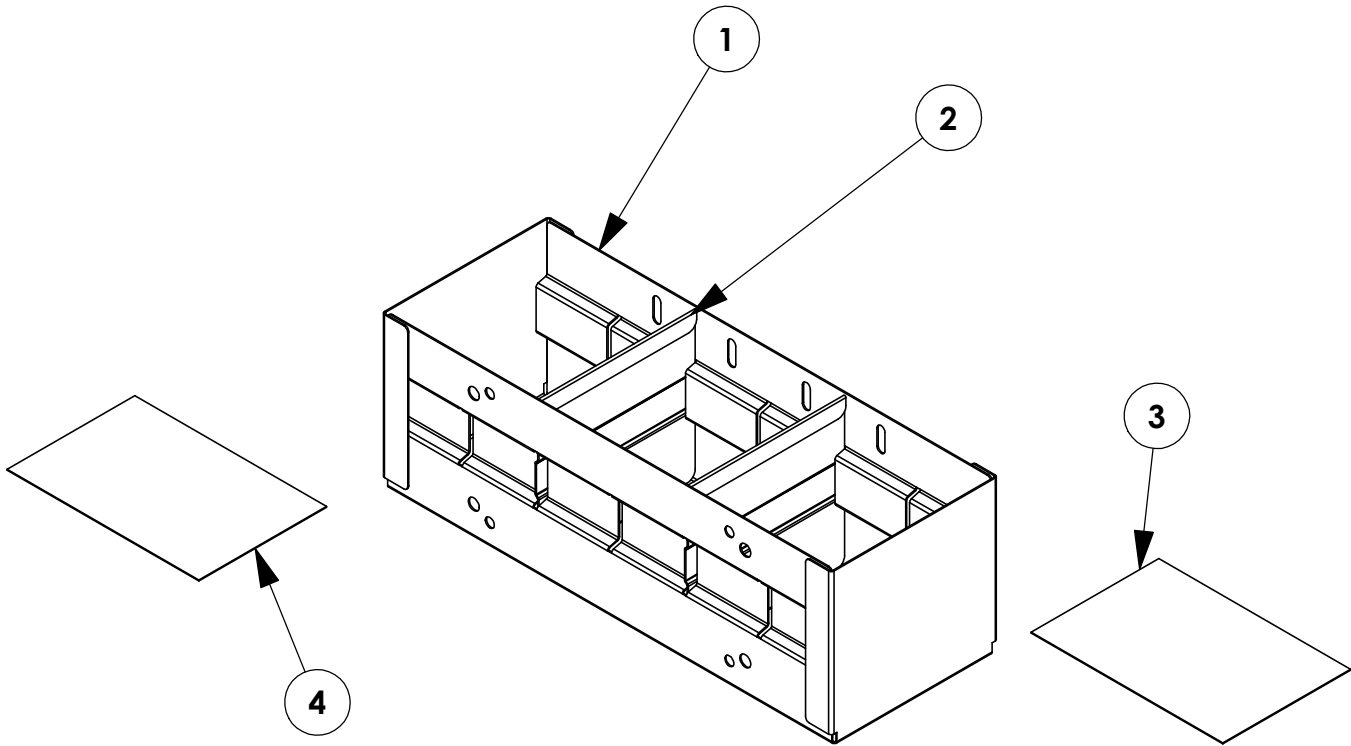
PRODUCT FEATURES

An all metal tray unit stowed pretty much anywhere space is available, usually on an end panel or partition. In addition this unit incorporates two adjustable dividers that can adjust to sizes that meet the storage size needs for whatever is stored in this solvent tray divider unit.

PRODUCT APPLICATION

This product is designed for installation into the vehicles including full size vans, box truck, PDV and trailers.

INSTR. : 66244 NUMBER	PG: 1	REV: B	ITEM NO.	PART NUMBER	DESCRIPTION	QTY.			
			1	66243-G	SOLVENT TRAY, DIVIDED 14in	1			
			PART : 66206 NUMBER			2	66197	TRAY DIVIDER	2
			PART : SOLVENT TRAY,DIVIDED 14IN DESC.			3	BAG65880	BAG FOR 65880	1
						4	BAGPEPACCM NT4	BAG FOR TRUCK END PANEL KITS	1



GET TO KNOW THE VEHICLE - AT THE BEGINNING OF ANY INSTALLATION, CHECK THE LOCATION OF THE FUEL TANK, FUEL LINES, BRAKE LINES, HIGH VOLTAGE BATTERIES AND WIRING HARNESSSES TO AVOID INJURY OR PROPERTY DAMAGE FROM TOOL CONTACT.

SEAL ALL EXTERIOR HOLES - ALL INSTALLATION HOLES SHOULD BE SEALED WITH BUTYL TAPE OR SILICON TO PREVENT WATER AND EXHAUST GASES FROM ENTERING THE VEHICLE.

CONTROL DRILL DEPTH - TO AVOID DAMAGE TO THE VEHICLE, USE A DRILL STOP OR CLEARED STEP BIT WHEN DRILLING INSTALLATION HOLES.

ALWAYS ADD PRIMER - WHEN ADDING INSTALLATION HOLES BE SURE TO USE A SELF-ETCHING PRIMER TO PREVENT CORROSION, FASTENER FAILURE AND INJURY.

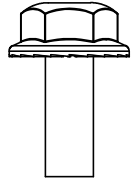
MOUNTING POINTS MUST HAVE METAL-TO-METAL CONTACT - USE PROVIDED MOUNTING SPACERS TO ACCOMMODATE FOR VEHICLE FEATURES, CARPET OR SUBFLOORS.

PROVIDE CLEARANCE FOR SPACERS - IF THE INSTALLATION VEHICLE CONTAINS A CARPET OR SUBFLOOR, USE A 1-3/16" DIAMETER CARPET CUTTER (P/N: 31183-0) AT ALL MOUNTING LOCATIONS TO OPEN UP ROOM FOR SPACERS.

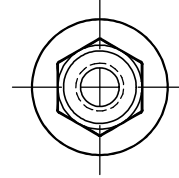
CHECK SPACER ORIENTATION - BE SURE THAT THE INDENT IN THE SPACER COVERS THE PLUSNUT HEAD; THIS ENSURES THE MOST METAL-TO-METAL CONTACT AND REDUCES VIBRATION.

PLUSNUT INSTALLATION - A PLUSNUT GUN IS RECOMMENDED FOR PLUSNUT INSTALLATION FOR ITS PRODUCTION SPEED. HOWEVER, A PLUSNUT SETTING TOOL CAN ALSO BE USED (P/N: 22200-0).

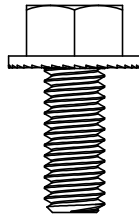
THRU-BOLT CLEARANCE - WHEN USING A THRU-BOLT AT ANY MOUNTING LOCATION, BE SURE THAT YOUR HOLE HAS 1/16" CLEARANCE.

FASTENERS USED**BAGS REFERENCED: BAG65880 AND BAGPEPACCMNT4**

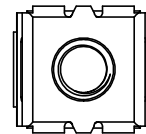
FAS0018
SCREW HH SFLNG
1/4-20X.62 ZP
QTY: 4



FAS0055
NUT,HEX NLK
FLG 1/4-20 ZP
QTY:4



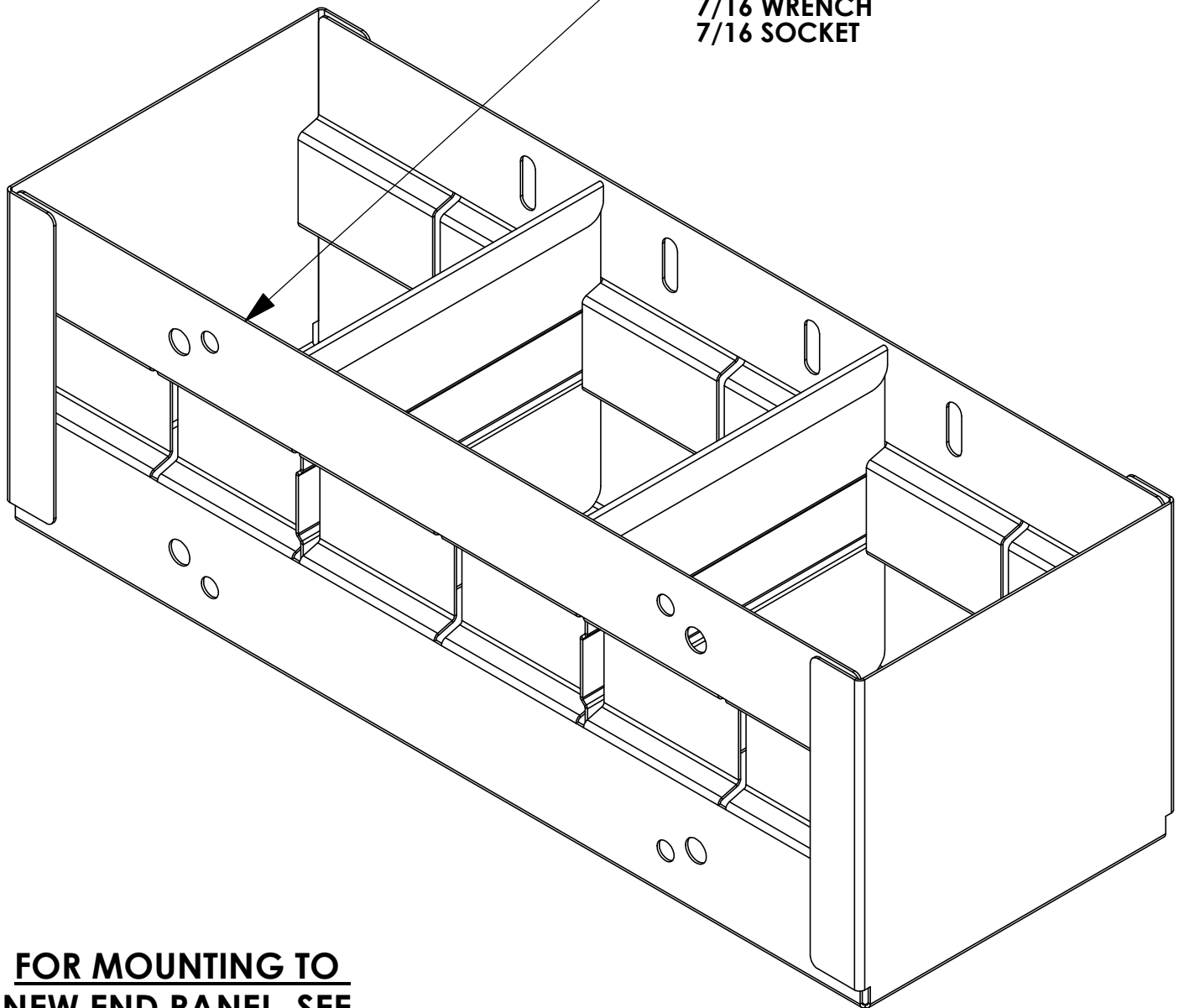
FAS0438
SCREW,HFLNG 5/16-
18X.75ZP
QTY: 4



FAS0915
SNAP-IN NUT,0.028-
0.056"
QTY: 4

BEGIN ASSEMBLY
STEP 1 - MOUNT SOLVENT TRAY TO
ANY SURFACE. USE HOLES AS
TEMPLATE FOR DRILLING OUT
HOLES FOR MOUNTING

USE FAS0018 AND FAS0055
(4 PLACES)
7/16 WRENCH
7/16 SOCKET



FOR MOUNTING TO
NEW END PANEL, SEE
NEXT PAGE!

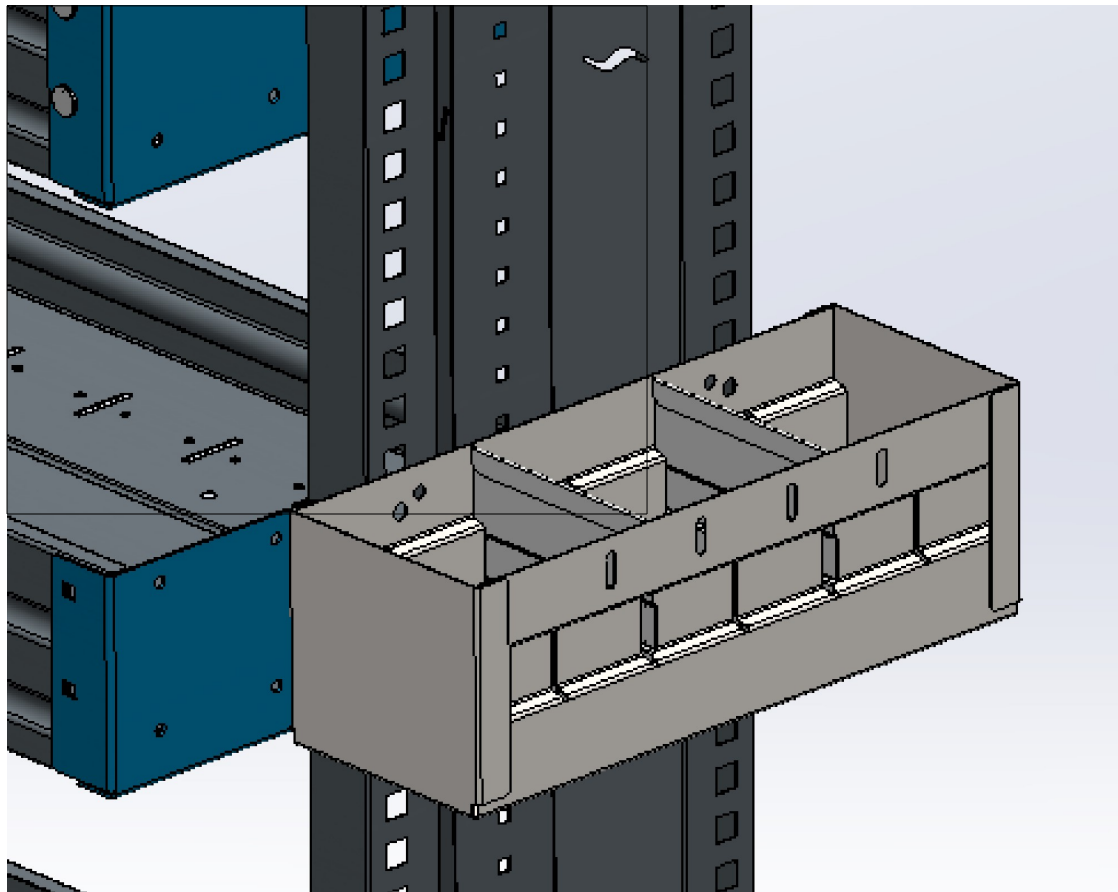
NOTE: DRILL SIZE 5/32 FOR MOUNTING HOLES

STEP 1: MOUNTING TO NEW END PANEL

STEP 1: ALIGN 66206 TO DESIRED LOCATION, MARK SQUARE CUTOUTS WHERE LARGER OUTSIDE HOLES ARE PLACED AND INSERT FAS0915 (QTY: 4) IN PROPPER LOCATIONS.

STEP 2: ONCE ALL SNAP NUTS ARE IN PLACE, RE-ALIGN 66206 AND FASTEN USING FAS0438 (QTY: 4) AND 1/2" SOCKET OR WRENCH.

STEP 3: FULLY TIGHTEN ALL FASTENERS



INSTALLATION IS COMPLETE!