

CATALOG NUMBER

66116



PRODUCT FEATURES

Maxxima work light kit that includes one work light, mounting hardware, and wiring to connect and power the work light. This work light will be mounted to steel partitions, giving the end user lighting outside their side door. This kit has cut to length wiring, making it usable for any size van. The switch included in the kit will be installed in the existing switch hole, in the wing of the partition.

Introduction / Comments:

Install Instructions For A Single Work Light On The Partition

Note:

Read all instructions prior to installation. Review the Adrian Steel **GENERAL PRECAUTIONS PAGES (56638)** before attempting installation. Only personnel familiar with using electrical best practices should perform this install. Reference **ELECTRICAL BEST PRACTICES MANUAL (54479)** before attempting installation.



Installation Instructions For A Single Work Light On The Partition

Kit Includes:

Component	Quantity	Description
66117	1.0000	HARN WRK LGT W/SW ON PAR
BAG66116	1.0000	FAS BAG WRK LGT KIT PAR
66118	1.0000	INS WRK LGT W/SW ON PAR
64236	1.0000	WORK LIGHT, MAXXIMA MWL-36
6105169AA	1.0000	NUT, M8, FUSE BOX, SPR
BAG0406-A	1.0000	BAG, 4X6 3MIL
FA50055	4.0000	NUT, HEX NLK FLG 1/4-20 ZP
FA50018	4.0000	SCREW, HFLNG 1/4-20X.62 ZP
FA50060	4.0000	WASHER, LCK SPLIT 1/4 ZP
FA50159	1.0000	NUT, HEX PRVTQ M6X1.0 ZP

Tools required:



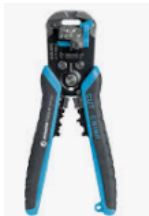
7/16" socket and wrench



Power drill and 3/8" step drill bit



Phillips head bit and driver



Wire strippers and crimper

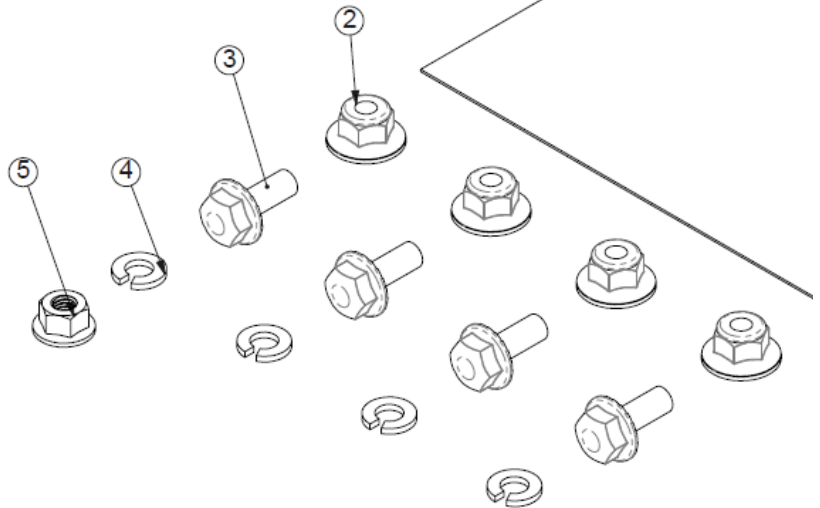
Sockets for Transit, GM, and Promaster
12V power points

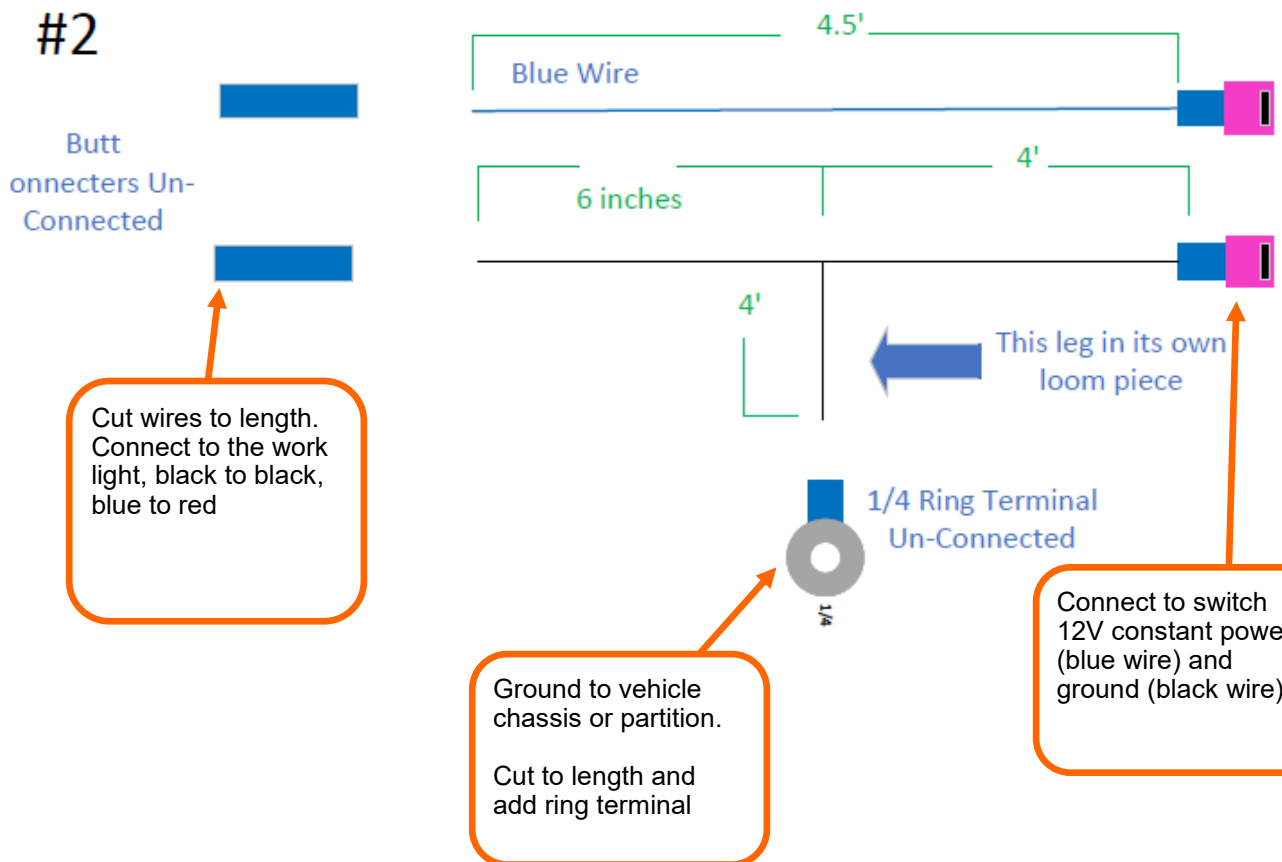
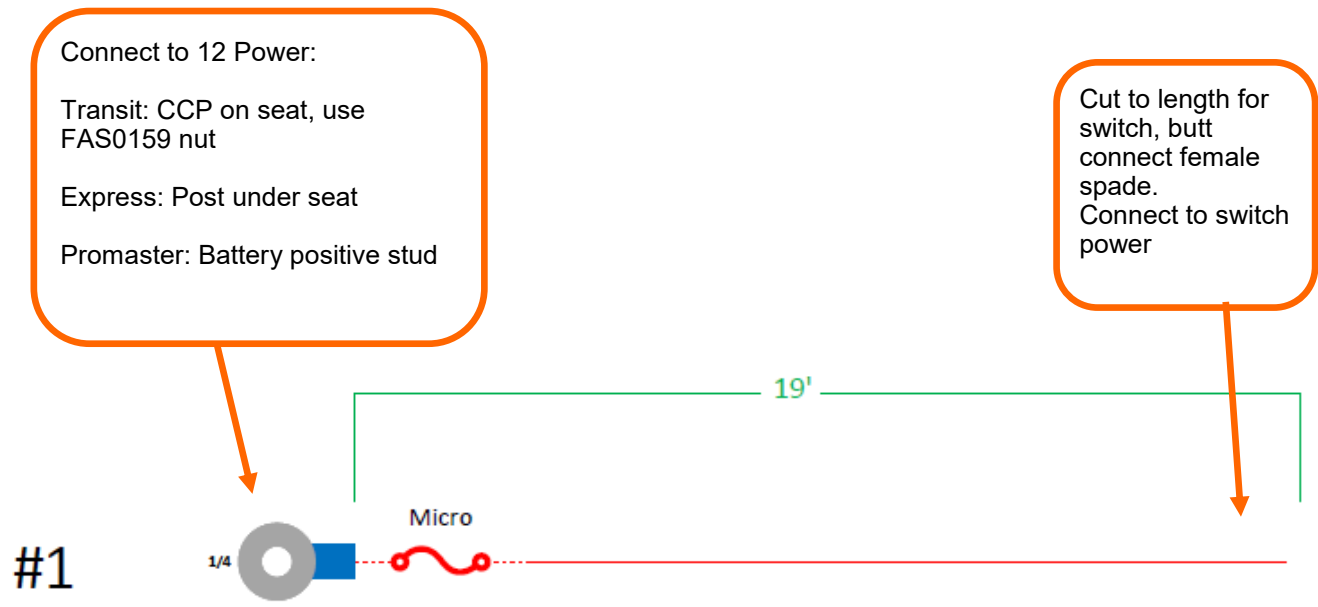
Switch diagram



Fastener Bag

ITEM NO.	PART NUMBER	DESCRIPTION	QTY.
1	BAG0406-A	4" x 6" 3MIL AUTOBAG	1
2	FAS0055	NUT,HEX NLK FLG 1/4-20 ZP	4
3	FAS0018	SCREW,HH SFLNG 1/4-20X.62 ZP	4
4	FAS0060	WASHER,LCK SPLIT 1/4 ZP	4
5	FAS0159	NUT, HEX TPLK M6X1.0	1

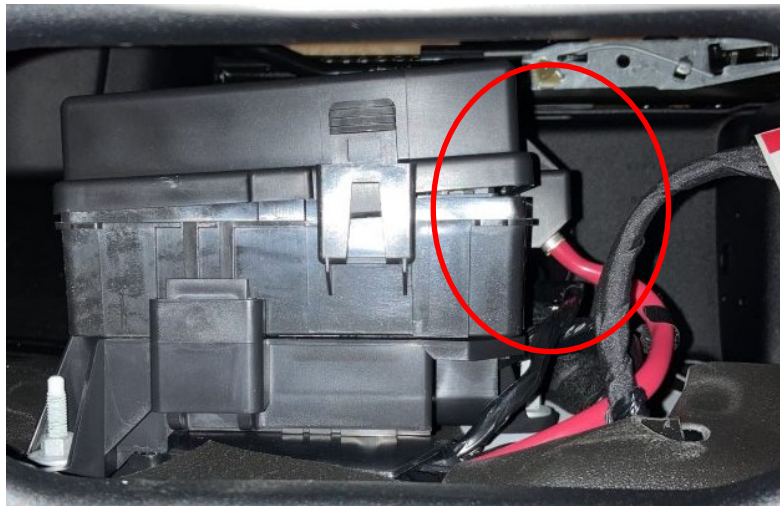




Battery Connection Points: Transit CCP:



GM Express:

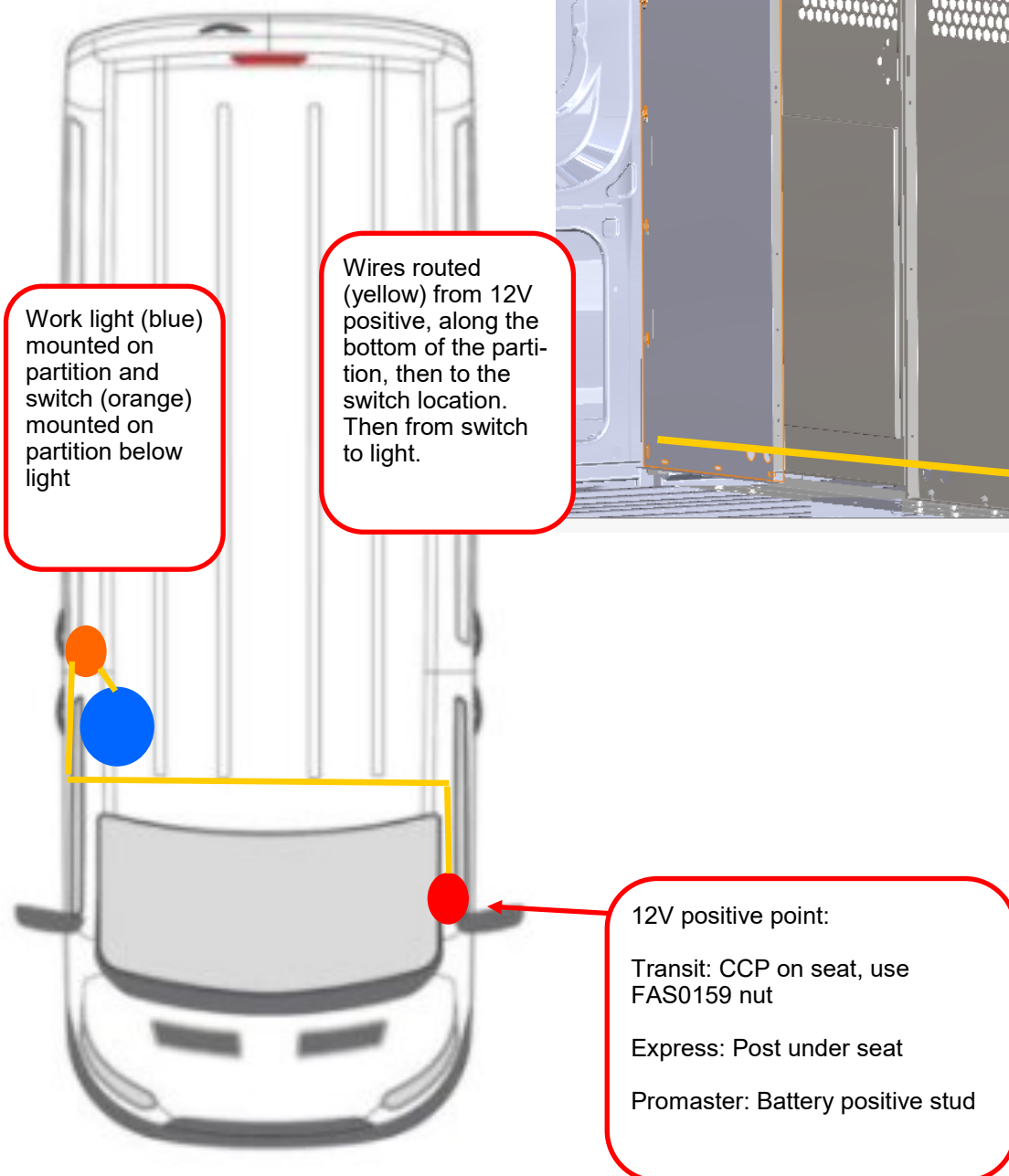


RAM Promaster:



Routing:

Wires will be routed inside the **cab** area. Secure wiring with cable ties and sticky back holders.



Step 1: Disconnect the negative OEM battery cable.

Connect harness #1 to power: Be sure the 5 Amp micro fuse is not in the fuse holder.

Reference page 5 for pictures:

Transit: CCP on seat, use FAS0159 nut

Express: Post under the driver's seat

Promaster: Battery positive stud –on fuse box

Step 2: Insert switch into its location.
Use the pre-existing hole in the partition.
(See pictures for reference for different partitions)

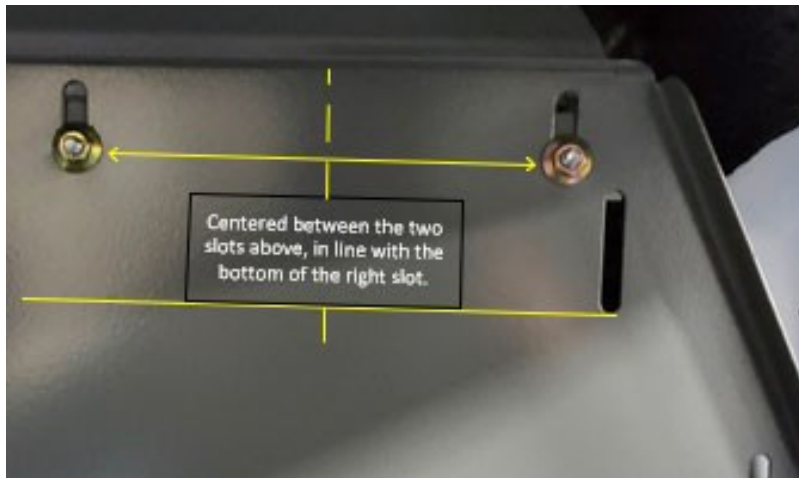
Route harness #1 to the switch. Route the wire to the partition, then along the bottom of the partition and up to the switch. Use sticky backs and cable ties to secure wiring.



Step 2: Mount the work light to the partition using 4 FAS0055's, 4 FAS0018's, and 4 FAS0060's

Drill 4 3/8" holes centered between the two partition fasteners in the upper passenger side.

See picture below for reference.



Step 3: Connect the 3 female spade connectors to the correct switch terminals.

See the switch diagram below and page 3.

Black Wire: Ground (Gold)
Blue Wire: 12V Constant (Middle)
Red Wire: Power (Opposite of ground)

Ground the black wire to the vehicle chassis or a partition bolt.





Step 3: Route the black and blue wire up the partition to the work light. Crimp the blue wire to the red wire of the work light, and then the black wires together.

Be sure to leave some extra cable in a loop to allow the light to rotate and fold up/down.

Secure all wiring with cable ties and sticky back. Make any service loops needed to hide extra wiring.

The Installation is now complete. Make sure all cabling is secure.

Insert the 5 Amp micro fuse into the fuse holder.

Connect the OEM negative battery cable.

Verify the light and switch works as expected.