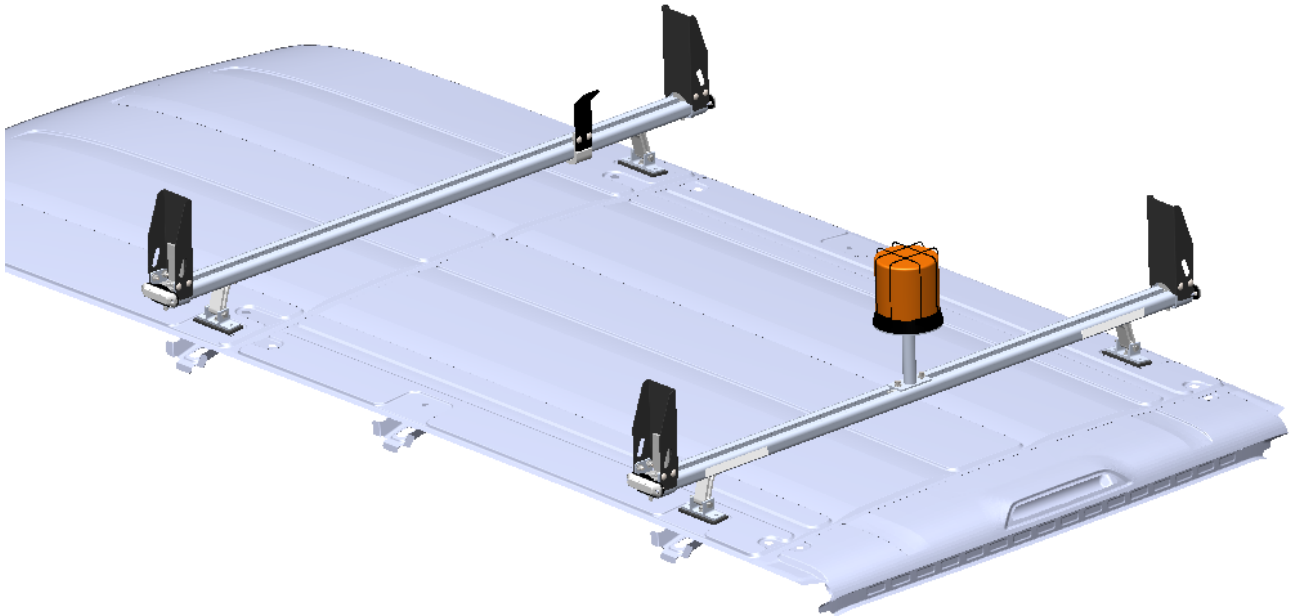


## Introduction / Comments:

Install Instructions For Utility Rack Beacon Kit

### **Note:**

Read all instructions prior to installation. Review the Adrian Steel **GENERAL PRECAUTIONS PAGES (56638)** before attempting installation. Only personnel familiar with using electrical best practices should perform this install. Reference **ELECTRICAL BEST PRACTICES MANUAL (54479)** before attempting installation.



## Installation Instructions For Utility Rack Beacon Kit

## Kit Includes:

Component	Quantity	Description
BAG66092	1.0000	FAS BAG BCN UTIL RCK
50367	1.0000	BEACON,AMB.STAR#255HTSL-A
51545	1.0000	BASE WELDMENT, STAR HALO
50368	1.0000	CAGE,STAR#257HTSL-A BCN.
66093	1.0000	HARN, BCN KIT FOR UTL RCK
66094	1.0000	INS FOR UTL RCK BCN KIT
26618-0	1.0000	SILICONE, 1 OZ TUBE

Component	Description	Qty
BAG0406-A	BAG, 4X6 3MIL	1.0000
35335-0	SLIDE, 1.5" / AD RAIL	2.0000
FAS0799	SCREW, HH 5/16-18X.75 SS	2.0000
FAS0588	WASHER, LCK SPLIT 5/16 SS	2.0000
FAS0552	WASHER, FLAT USS 5/16 SS	2.0000
65314	CABLE GLANDE & NUT, PG11	1.0000
FAS0842	SCREW, FHP TEK 18-8X.5 SS	7.0000
66843	NYLON CLAMP 3/8" ID	7.0000

## Tools required:



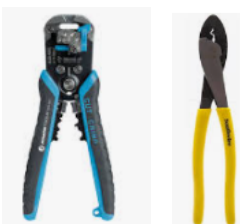
1/2" socket and a 47/64" drill bit (or hole saw)



Power drill and 3/8" step drill bit



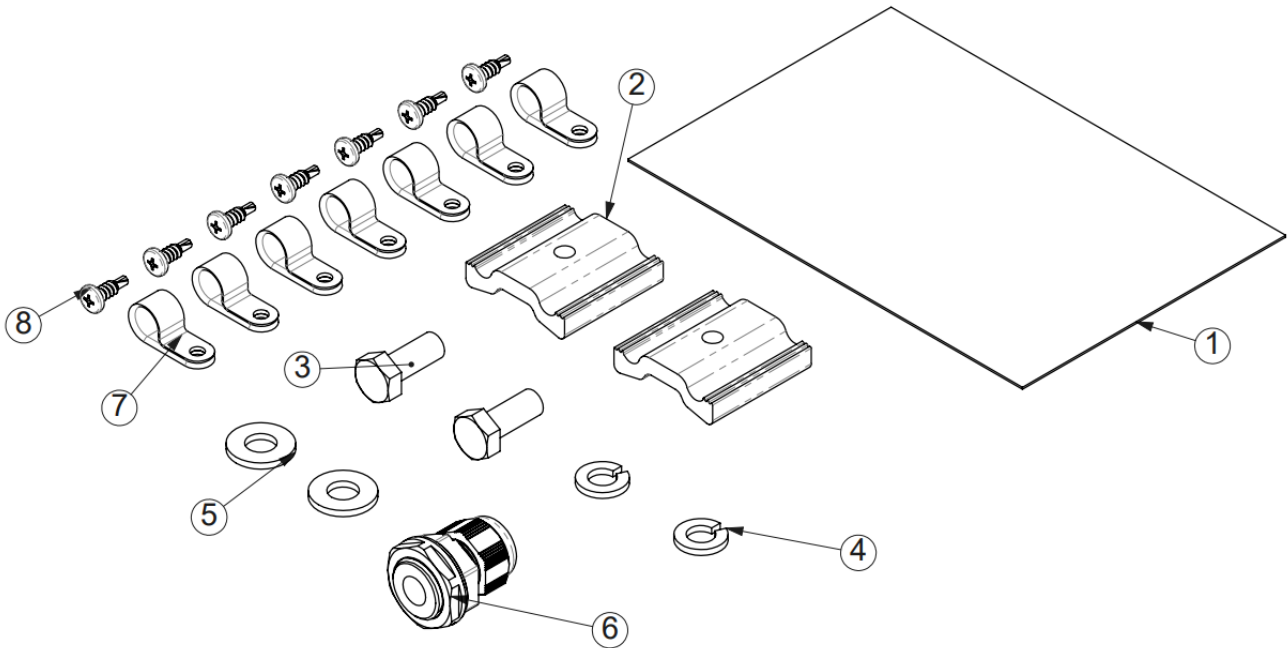
#3 Phillips bit and 11/32" wrench or socket

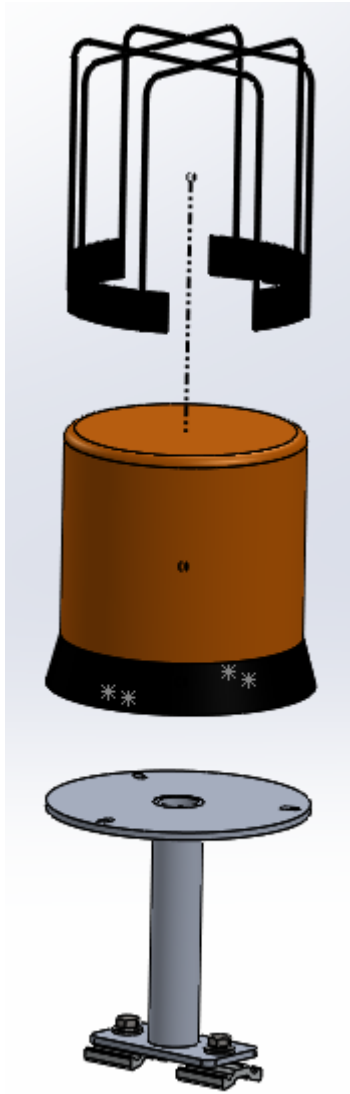


Wire strippers and crimper

## Fastener Bag

ITEM NO.	PART NUMBER	DESCRIPTION	QTY.
1	BAG0406-A	4" x 6" 3MIL AUTOBAG	1
2	35335-0	SLIDE, 1.5" / AD RAIL	2
3	FAS0799	Screw, Hex Hd, 5/16-18x0.75 SS	2
4	FAS0588	Washer, Lock, Split, 5/16, SS	2
5	FAS0552	Washer, Flat, 5/16, SST	2
6	65314	Vented Plastic Submersible Cord Grip	1
7	66843	Nylon Clamp 3/8" ID	7
8	FAS0842	SCREW,FHP TEK 18-8X.5 SS	7





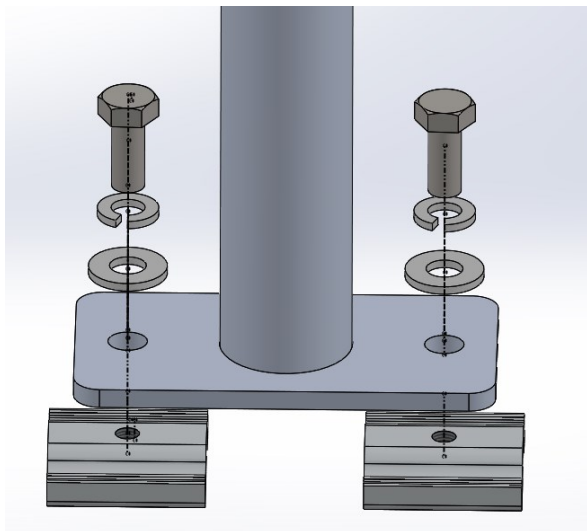
**Step 1:** Cut all the wires except the red and black one, short at the base of the beacon, and tape up with electrical tape.

Cut some length off the red and black wires so the splice point will be in the middle of the beacon mount tube. This will make routing much easier.

Connect the beacon harness to the beacon wires, red to red, black to black.

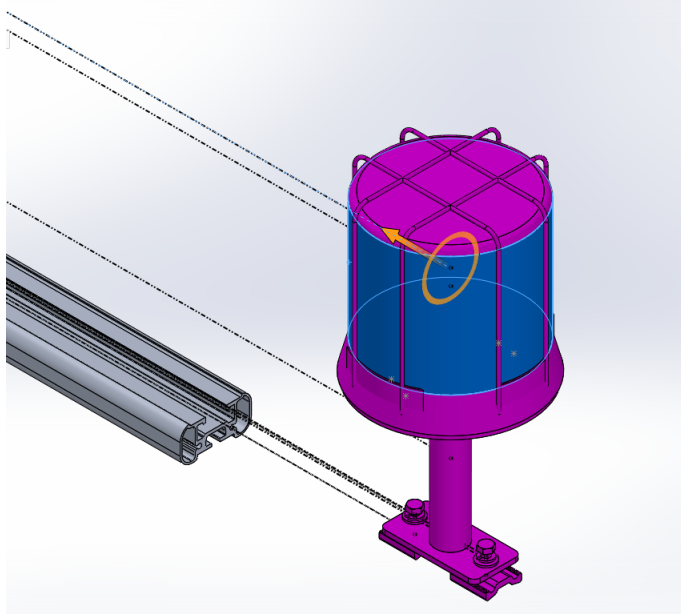
Run the wire harness through the beacon mount tube, be sure the butt connector splice point is tucked up into the tube.

Assemble the beacon, cage, and mount together by using the supplied fasteners with the beacon. (3 bolts, 3 washers, and 3 nuts)

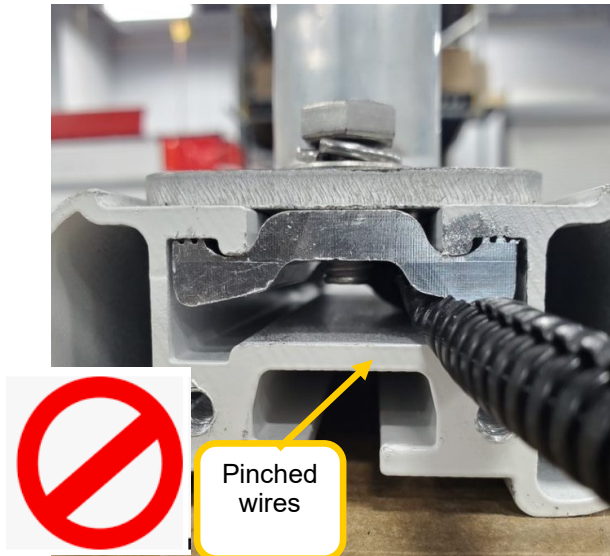
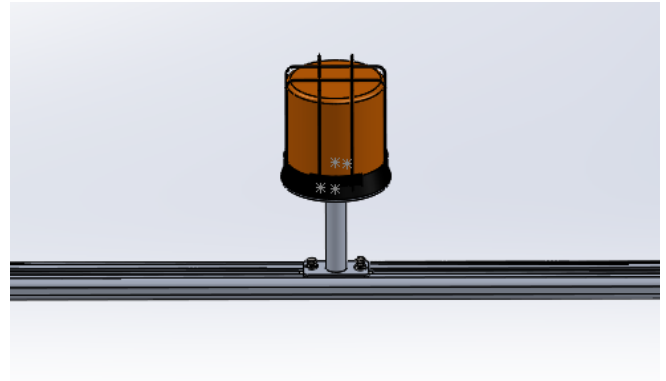


**Step 2:** Assemble the beacon mount feet by inserting the bolt (FAS0799) through the lock washer (FAS0588) then flat washer (FAS0552) then through the foot into the slide. Do not tighten down at this point.

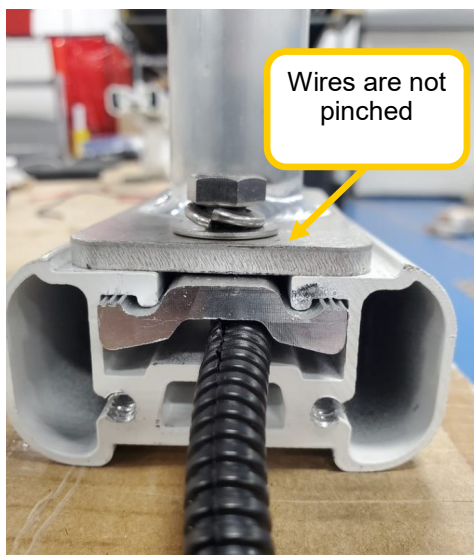
See picture to the left for order reference.



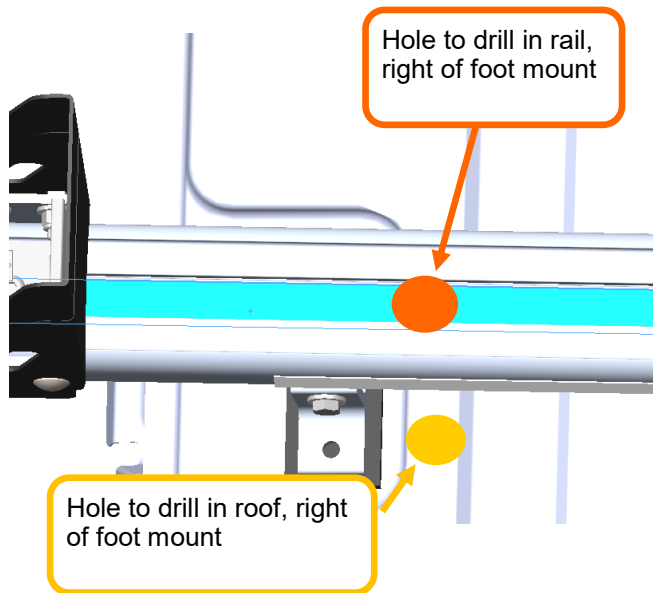
**Step 3:** Slide the beacon/mount to the center of the rail.  
Be cautious of the wire sliding through the rail.  
Tighten the bolts once you have positioned the beacon.



**\*\*\*Be cautious the wires are not pinched after tightening the slides\*\*\***  
See pictures for reference.



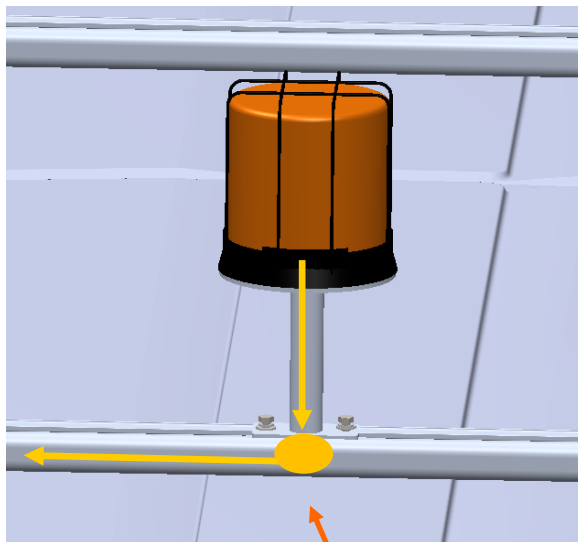
**Step 4:** There are two options for routing the wires. All wires will be routed through the roof into the cargo area on the driver side of the vehicle. All holes through the roof should be drilled as close to the rail foot as possible for wire routing.



### Option 1: (The preferred option)

Drill a 3/8" hole from the top channel to the bottom channel, to the right of the where the foot mounts to the rail. See picture to the left for reference.

Route the wires in the top rail channel (before inserting the weather strip) to the drivers side area, through the hole in the rail, and down the foot to the hole in the roof.



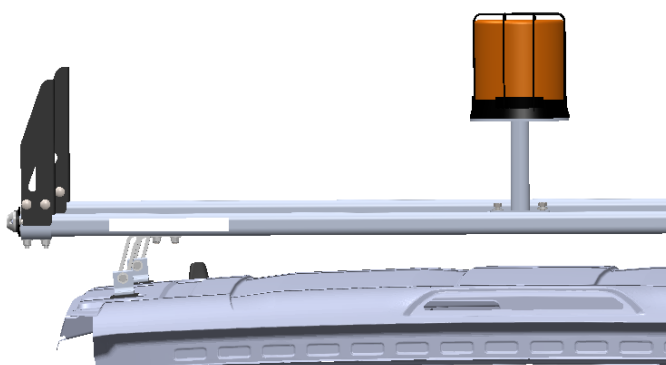
**Option 2:** Drill a 3/8" hole from the top channel to the bottom channel directly under the beacon mount. Then route the wires through the hole to the bottom channel and down the channel to the end of the rail, drivers side.

Use the tek screws (FAS0842) and nylon clips (66843) to secure the wiring under the utility rack.

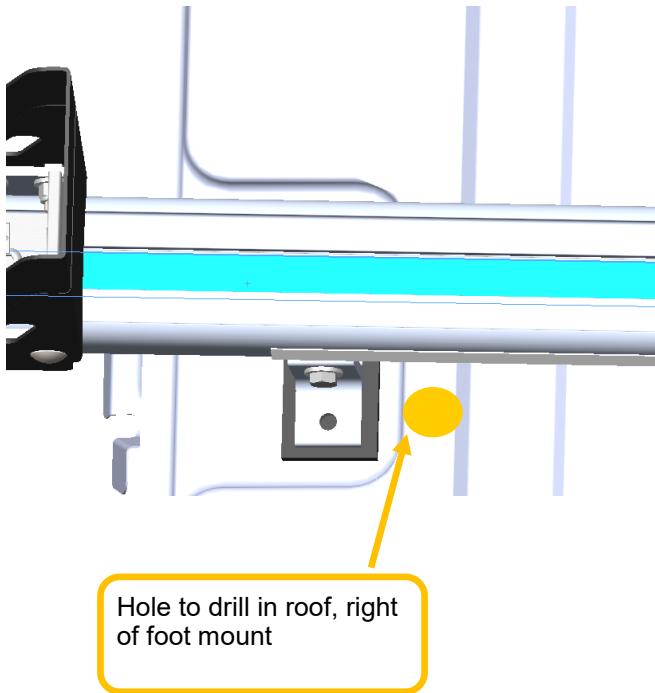
Routing is shown in yellow in the picture to the left. The hole is drilled beneath the beacon from the top channel to bottom.

Where you route the wires will depend on what all options you are installing on the utility rack.

If you are installing a few accessories onto the rail that mount to the bottom channel, use the top channel for wire routing. Or vise versa.







**Step 5:** Once the utility rack is mounted to the roof of the vehicle, drill a 47/64" hole in the roof, to the right of the foot mount. See the picture to the left for reference.

**Step 6:** Insert the weather protector grommet into the hole in the roof.

**Step 7:** Route the wires through the grommet into the cargo area. Seal the hole with silicone. Tighten the nut on the grommet.

Use cable ties to secure the wiring on the utility rack foot and inside the vehicle

The assembly is now complete.

Use wires, a switch, fuse holders, fuses, ring terminals, and butt connectors to complete the install.

Connect the black wire to an OEM ground.

Connect the red wire to the added switch.

Create a red wire with a fuse/fuse holder, connect it to a 12V positive point and the other end to the added switch.

