

# PURCHASED COMPONENT KEY FEATURES

## DESCRIPTION OF REQUIREMENTS

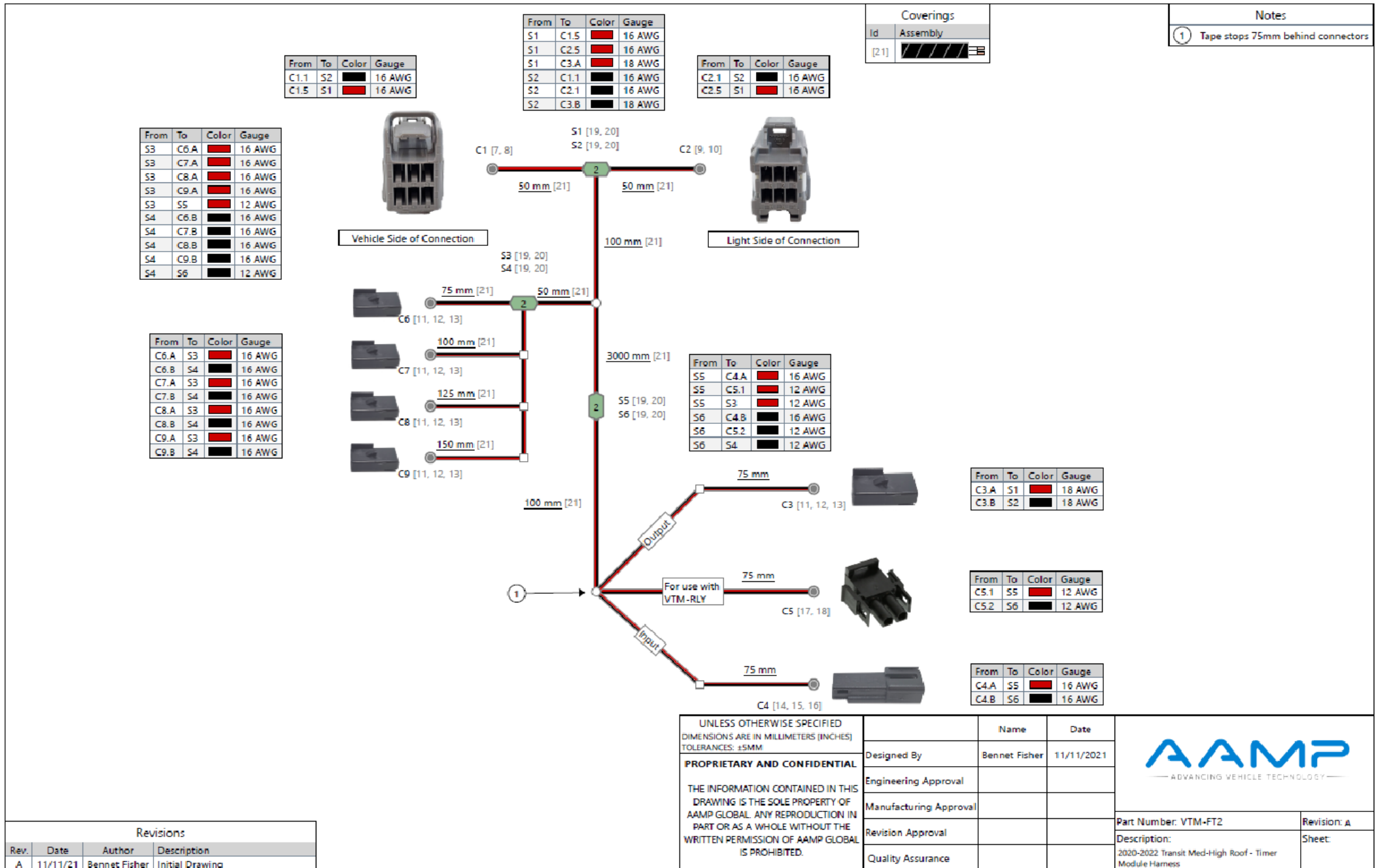
<p>DIMENSIONAL REQUIREMENTS (AS SHOWN ON DRAWING)</p> <p><b>N/A</b></p>	
---	--

LOAD/RATING REQUIREMENT
N/A

MATERIAL REQUIREMENT
N/A

PACKAGING REQUIREMENT
N/A

OTHER REQUIREMENTS
--------------------



THIS DRAWING IS THE PROPERTY OF ADRIAN STEEL COMPANY AND IS NOT TO BE USED IN ANY MANNER  
DETRIMENTAL TO THE INTERESTS OF ADRIAN STEEL COMPANY

## TOLERANCES & INSPECTION

UNLESS OTHERWISE SPECIFIED  
ALL BEND ANGLES ARE 90 DEGREES

ALL DIMENSIONS ARE IN INCHES.  
REFERENCE DIMENSIONS (X XXX)

REFERENCE DIMENSIONS (X.XXX)		
DO NOT REQUIRE INSPECTION		
FEATURES	HOLE/SLOTS	ANGLES

FEATURES	HOLES/SLOTS	ANGLES
0.0 = $\pm$ .125	0.0 = $\pm$ .062	0° = $\pm$ 2°
0.00 = $\pm$ .062	0.00 = $\pm$ .031	0.0° = $\pm$ 1°
0.000 = $\pm$ .031	0.000 = $\pm$ .015	

**Material Thickness: per ASTM Std.  
Weld Callouts per AWS**

## RELEASE & REVISIONS

INITIAL ECN: 25377

CURRENT ECN: **25377**

ECN DESCRIPTION:

**RELEASE FOR PRODUCTION**

### REFERENCE POINT REDUCTION

REVISÉD BY: **EMB**

## PURCHASED COMPONENT

AAMP GLOBAL

REFERENCED SUPPLIER AND/OR MANUFACTURER PART NUMBER  
**VTM-FT2 OR 65794**

COLOR (ONLY LIST IF COLOR SPECIFIC)

COMODITY ITEM (Y/N) (YES = ALL DIMENSIONS AND NOTES ARE REFERENCE)  
(NOTE: DIMENSIONS AND FEATURES MAY VARY FOR A COMODITY ITEM.)

**NO**

PRINTED DOCUMENT IS UNCONTROLLED Sheet 1 of 1

PART / PRODUCT IDENTIFICATION	
-------------------------------	--

PART / PRODUCT IDENTIFICATION	
-------------------------------	--



MAT'L USED:	<b>PURCHASED</b>	DESIGNED BY: <b>E.BURKE</b>	
-------------	------------------	-----------------------------	---

DESCRIPTION: **HARN, POWER VTM FT2**

WEIGHT (Lbs.): <b>0.2</b>	SEGMENT CODE: <b>ELE</b>	PART NUMBER: <b>65794</b>
------------------------------	-----------------------------	---------------------------

WEIGHT (Lbs.): <b>0.2</b>	SEGMENT CODE: <b>ELE</b>	PART NUMBER: <b>65794</b>
------------------------------	-----------------------------	---------------------------

WEIGHT (Lbs.): <b>0.2</b>	SEGMENT CODE: <b>ELE</b>	PART NUMBER: <b>65794</b>
------------------------------	-----------------------------	---------------------------

