

# PURCHASED COMPONENT KEY FEATURES

## DESCRIPTION OF REQUIREMENTS

DIMENSIONAL REQUIREMENTS (AS SHOWN ON DRAWING)

N/A

LOAD/RATING REQUIREMENT

N/A

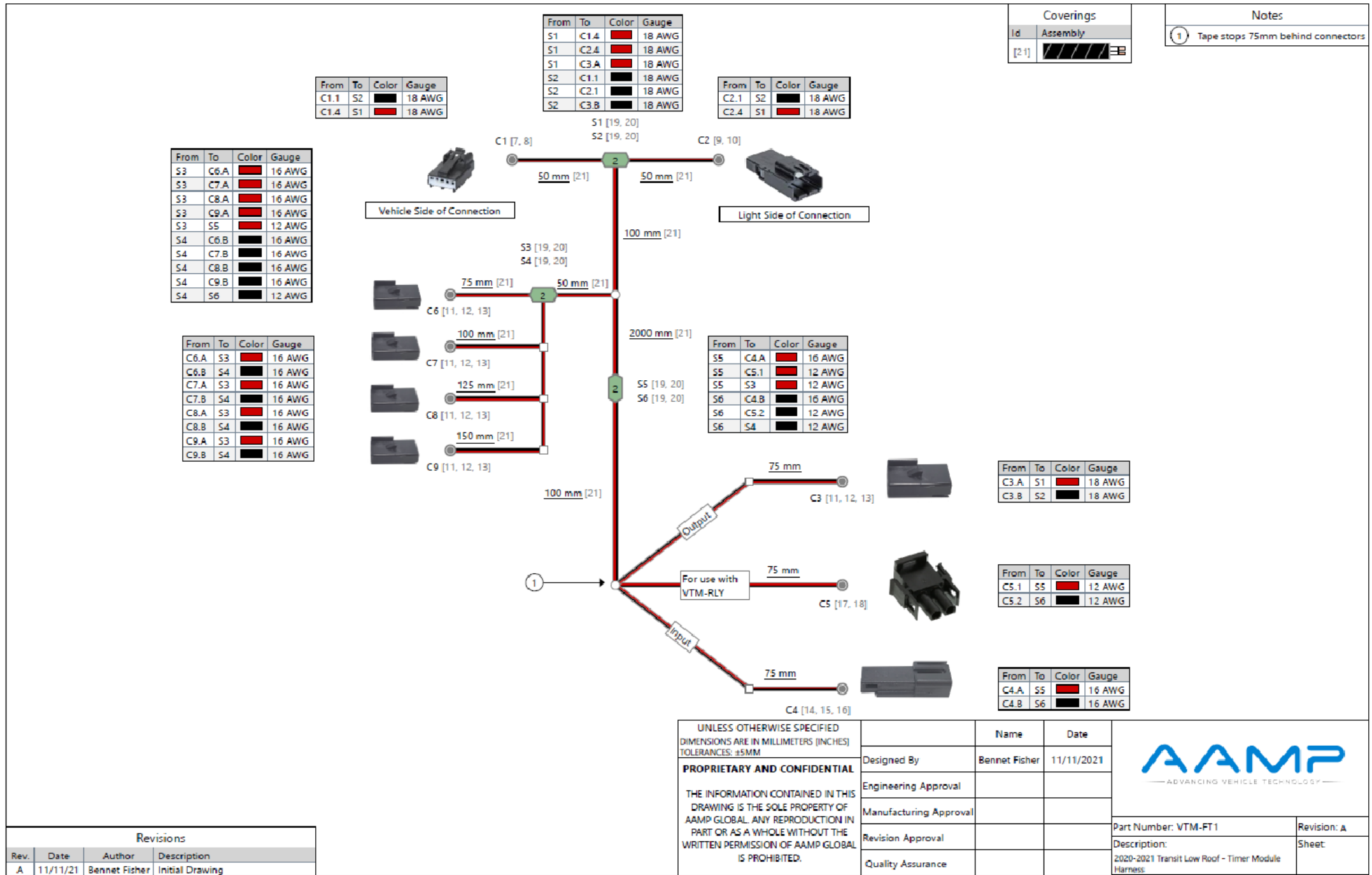
MATERIAL REQUIREMENT

N/A

PACKAGING REQUIREMENT

N/A

OTHER REQUIREMENTS



THIS DRAWING IS THE PROPERTY OF ADRIAN STEEL COMPANY AND IS NOT TO BE USED IN ANY MANNER DETRIMENTAL TO THE INTERESTS OF ADRIAN STEEL COMPANY

## TOLERANCES & INSPECTION

UNLESS OTHERWISE SPECIFIED

ALL BEND ANGLES ARE 90 DEGREES

ALL DIMENSIONS ARE IN INCHES.

REFERENCE DIMENSIONS (X.XXX)  
DO NOT REQUIRE INSPECTION

FEATURES	HOLES/SLOTS	ANGLES
0.0 = ± .125	0.0 = ± .062	0° = ± 2°
0.00 = ± .062	0.00 = ± .031	0.0° = ± 1°
0.000 = ± .031	0.000 = ± .015	

Material Thickness: per ASTM Std.  
Weld Callouts per AWS

## RELEASE & REVISIONS

INITIAL ECN: **25377**

CURRENT ECN: **25377**

ECN DESCRIPTION:  
**RELEASE FOR PRODUCTION**

REVISED BY: **EMB**

# PURCHASED COMPONENT

REFERENCED SUPPLIER AND/OR MANUFACTURER  
**AAMP GLOBAL**

REFERENCED SUPPLIER AND/OR MANUFACTURER PART NUMBER  
**VTM-FT1 OR 65793**

COLOR (ONLY LIST IF COLOR SPECIFIC)  
**NO**

COMODITY ITEM (Y/N) (YES = ALL DIMENSIONS AND NOTES ARE REFERENCE)  
(NOTE: DIMENSIONS AND FEATURES MAY VARY FOR A COMODITY ITEM.)  
**NO**

PRINTED DOCUMENT IS UNCONTROLLED

Sheet 1 of 1

## PART / PRODUCT IDENTIFICATION

	<b>ADRIAN STEEL</b>	ADRIAN STEEL COMPANY 906 JAMES STREET, ADRIAN, MI 49221	REVISION LEVEL <b>A</b>
	MAT'L USED: <b>PURCHASED</b>	DESIGNED BY: <b>E.BURKE</b>	
DESCRIPTION: <b>HARN, POWER VTM FT1</b>			
WEIGHT (Lbs.): <b>0.2</b>	SEGMENT CODE: <b>ELE</b>	PART NUMBER: <b>65793</b>	

Coverings	
Id	Assembly
[21]	

Notes  
 ① Tape stops 75mm behind connectors

From	To	Color	Gauge
S1	C1.4	Red	18 AWG
S1	C2.4	Red	18 AWG
S1	C3.A	Red	18 AWG
S2	C1.1	Black	18 AWG
S2	C2.1	Black	18 AWG
S2	C3.B	Black	18 AWG

From	To	Color	Gauge
S3	C6.A	Red	16 AWG
S3	C7.A	Red	16 AWG
S3	C8.A	Red	16 AWG
S3	C9.A	Red	16 AWG
S3	S5	Red	12 AWG
S4	C6.B	Black	16 AWG
S4	C7.B	Black	16 AWG
S4	C8.B	Black	16 AWG
S4	C9.B	Black	16 AWG
S4	S6	Black	12 AWG

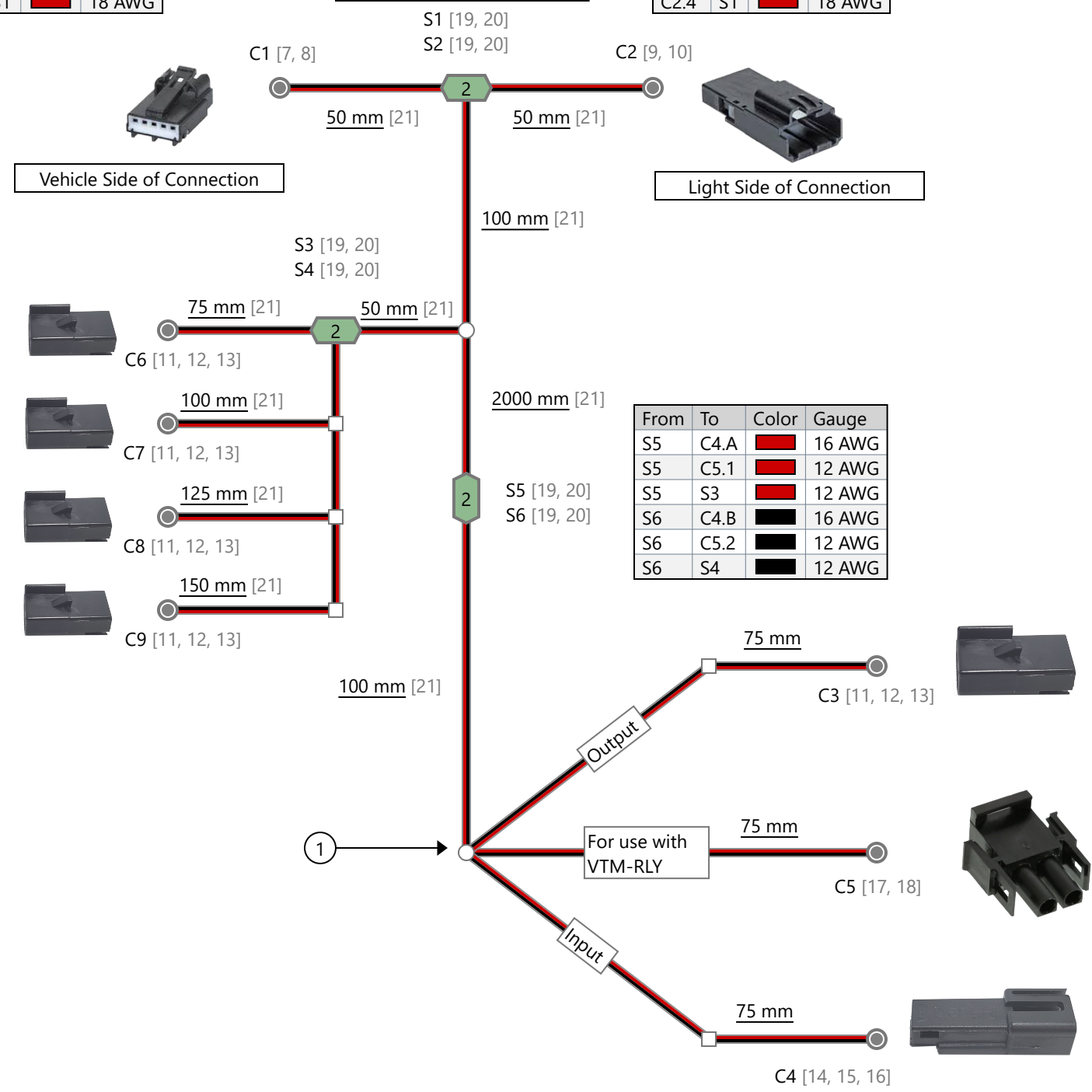
From	To	Color	Gauge
C6.A	S3	Red	16 AWG
C6.B	S4	Black	16 AWG
C7.A	S3	Red	16 AWG
C7.B	S4	Black	16 AWG
C8.A	S3	Red	16 AWG
C8.B	S4	Black	16 AWG
C9.A	S3	Red	16 AWG
C9.B	S4	Black	16 AWG

From	To	Color	Gauge
S5	C4.A	Red	16 AWG
S5	C5.1	Red	12 AWG
S5	S3	Red	12 AWG
S6	C4.B	Black	16 AWG
S6	C5.2	Black	12 AWG
S6	S4	Black	12 AWG

From	To	Color	Gauge
C3.A	S1	Red	18 AWG
C3.B	S2	Black	18 AWG

From	To	Color	Gauge
C5.1	S5	Red	12 AWG
C5.2	S6	Black	12 AWG

From	To	Color	Gauge
C4.A	S5	Red	16 AWG
C4.B	S6	Black	16 AWG



UNLESS OTHERWISE SPECIFIED  
 DIMENSIONS ARE IN MILLIMETERS [INCHES]  
 TOLERANCES: ±5MM

**PROPRIETARY AND CONFIDENTIAL**

THE INFORMATION CONTAINED IN THIS DRAWING IS THE SOLE PROPERTY OF AAMP GLOBAL. ANY REPRODUCTION IN PART OR AS A WHOLE WITHOUT THE WRITTEN PERMISSION OF AAMP GLOBAL IS PROHIBITED.

	Name	Date
Designed By	Bennet Fisher	11/11/2021
Engineering Approval		
Manufacturing Approval		
Revision Approval		
Quality Assurance		



Part Number: VTM-FT1  
 Description: 2020-2021 Transit Low Roof - Timer Module Harness  
 Revision: A  
 Sheet:

Revisions			
Rev.	Date	Author	Description
A	11/11/21	Bennet Fisher	Initial Drawing