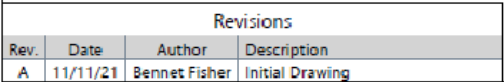



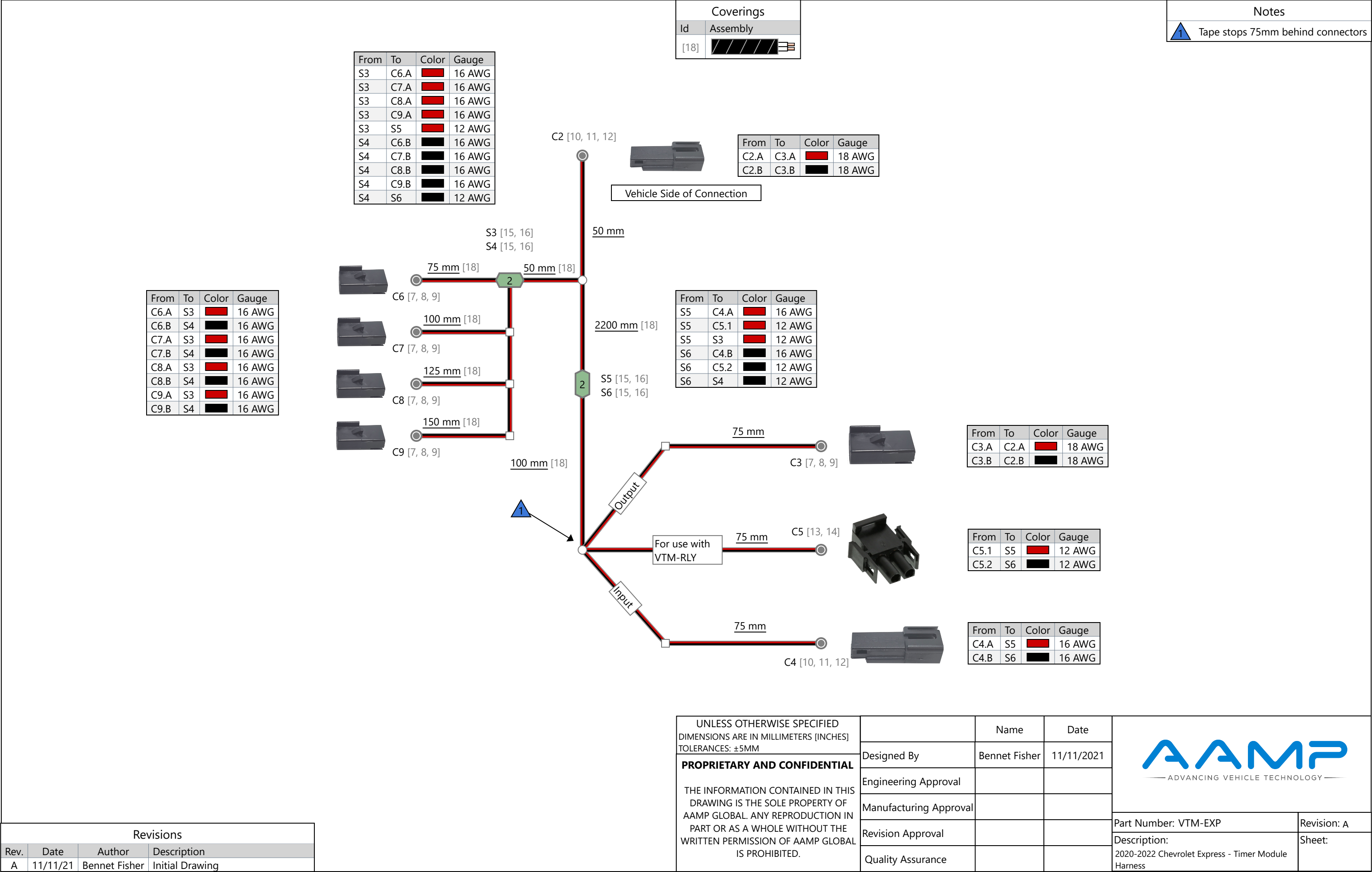
PURCHASED COMPONENT KEY FEATURES	
DESCRIPTION OF REQUIREMENTS	
DIMENSIONAL REQUIREMENTS (AS SHOWN ON DRAWING)	N/A
LOAD/RATING REQUIREMENT	N/A
MATERIAL REQUIREMENT	N/A
PACKAGING REQUIREMENT	N/A
OTHER REQUIREMENTS	



TOLERANCES & INSPECTION		
<i>UNLESS OTHERWISE SPECIFIED</i>		
ALL BEND ANGLES ARE 90 DEGREES		
ALL DIMENSIONS ARE IN INCHES.		
REFERENCE DIMENSIONS (X.XXX)		
DO NOT REQUIRE INSPECTION		
FEATURES	HOLES/SLOTS	ANGLES
0.0 = ± .125	0.0 = ± .062	0° = ± 2°
0.00 = ± .062	0.00 = ± .031	0.0° = ± 1°
0.000 = ± .031	0.000 = ± .015	
Material Thickness: per ASTM Std.		
Weld Callouts per AWS		

PURCHASED COMPONENT
REFERENCED SUPPLIER AND/OR MANUFACTURER AAMP GLOBAL
REFERENCED SUPPLIER AND/OR MANUFACTURER PART NUMBER VTM-EXP OR 65792
COLOR (ONLY LIST IF COLOR SPECIFIC)
COMODITY ITEM (Y/N) (YES = ALL DIMENSIONS AND NOTES ARE REFERENCE) (NOTE: DIMENSIONS AND FEATURES MAY VARY FOR A COMODITY ITEM.) NO

PART / PRODUCT IDENTIFICATION			
	ADRIAN STEEL®		ADRIAN STEEL COMPANY 906 JAMES STREET, ADRIAN, MI 49221
			REVISION LEVEL A
MAT'L USED: PURCHASED		DESIGNED BY: E.BURKE	
DESCRIPTION: HARN, POWER VTM EX			
WEIGHT (Lbs.): 0.2	SEGMENT CODE: ELE		PART NUMBER: 65792



From

To

Color

Gauge

S3

S5

12 AWG

From

To

Color

Gauge

S4

C6.B

16 AWG

From

To

Color

Gauge

S4

C7.B

16 AWG

From

To

Color

Gauge

S4

C8.B

16 AWG

From

To

Color

Gauge

S4

C9.B

16 AWG

From

To

Color

Gauge

S4

S6

12 AWG

From

To

Color

Gauge

C6.A

S3

16 AWG

From

To

Color

Gauge

C6.B

S4

16 AWG

From

To

Color

Gauge

C7.A

S3

16 AWG

From

To

Color

Gauge

C7.B

S4

16 AWG

From

To

Color

Gauge

C8.A

S3

16 AWG

From

To

Color

Gauge

C8.B

S4

16 AWG

From

To

Color

Gauge

C9.A

S3

16 AWG

From

To

Color

Gauge

C9.B

S4

16 AWG

From

To

Color

Gauge

S5

C4.A

16 AWG

From

To

Color

Gauge

S5

C5.1

12 AWG

From

To

Color

Gauge

S5

S3

12 AWG

From

To

Color

Gauge

S6

C4.B

16 AWG

From

To

Color

Gauge

S6

C5.2

12 AWG

From

To

Color

Gauge

S6

S4

12 AWG

From

To

Color

Gauge

C3.A

C2.A

18 AWG

From

To

Color

Gauge

C3.B

C2.B

18 AWG

From

To

Color

Gauge

C5.1

S5

12 AWG

From

To

Color

Gauge

C5.2

S6

12 AWG

From

To

Color

Gauge

C4.A

S5

16 AWG

From

To

Color

Gauge

C4.B

S6

16 AWG

Id

Assembly

[18]

From

To

Color

Gauge

C2.A

C3.A

18 AWG

From

To

Color

Gauge

C2.B

C3.B

18 AWG

From

To

Color

Gauge

C3.A

C2.A

18 AWG

From

To

Color

Gauge

C3.B

C2.B

18 AWG

From

To

Color

Gauge

C5.1

S5

12 AWG

From

To

Color

Gauge

C5.2

S6

12 AWG

From

To

Color

Gauge

C4.A

S5

16 AWG

From

To

Color

Gauge

C4.B

S6

16 AWG

Notes

1

Tape stops 75mm behind connectors

Vehicle Side of Connection

Output

Input

For use with VTM-RLY

2

2

50 mm

2200 mm

75 mm

75 mm

75 mm

100 mm

125 mm

150 mm

75 mm

50 mm

C2 [10, 11, 12]

C6 [7, 8, 9]

C7 [7, 8, 9]

C8 [7, 8, 9]

C9 [7, 8, 9]

C3 [7, 8, 9]

C5 [13, 14]

C4 [10, 11, 12]

S3 [15, 16]

S4 [15, 16]

S5 [15, 16]

S6 [15, 16]

1

Revisions

Rev.

Date

Author

Description

A

11/11/21

Bennet Fisher

Initial Drawing

UNLESS OTHERWISE SPECIFIED
DIMENSIONS ARE IN MILLIMETERS [INCHES]
TOLERANCES: ±5MM

PROPRIETARY AND CONFIDENTIAL

THE INFORMATION CONTAINED IN THIS
DRAWING IS THE SOLE PROPERTY OF
AAMP GLOBAL. ANY REPRODUCTION IN
PART OR AS A WHOLE WITHOUT THE
WRITTEN PERMISSION OF AAMP GLOBAL
IS PROHIBITED.

Designed By

Engineering Approval

Manufacturing Approval

Revision Approval

Quality Assurance

Name

Bennet Fisher

Date

11/11/2021

AAMP

— ADVANCING VEHICLE TECHNOLOGY —

Part Number: VTM-EXP

Revision: A

Description:
2020-2022 Chevrolet Express - Timer Module
Harness

Sheet: