

## **DOME LIGHT UPGRADE, GMFSV**



**PRODUCT WEIGHT**

**2.67 LBS**

**COLOR**

**GRAY**

**CATALOG NUMBER**

**65658**



### **PRODUCT FEATURES**

**This kit replaces the OEM dome light in the GM full size vans. The light remains connected to the OEM light circuit, thus the functionality remains the same. It connects using two butt-connectors and one fastener that locates using an OEM hole.**

**This replacement light uses LED bulbs and is significantly brighter than the OEM incandescent bulbs.**

## Introduction / Comments:

GM Express Dome Cab Light Replacement Kit

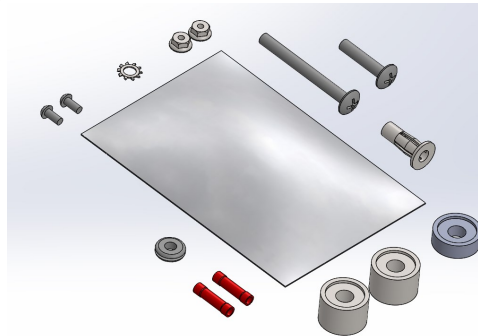
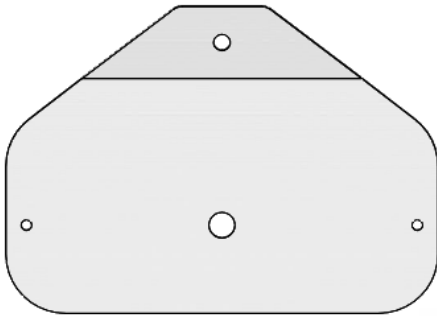
### **Note:**

Read all instructions prior to installation. Review the Adrian Steel **GENERAL PRECAUTIONS PAGES (56638)** before attempting installation. Only personnel familiar with using electrical best practices should perform this install. Reference **ELECTRICAL BEST PRACTICES MANUAL (54479)** before attempting installation.



## Installation Instructions for 65658 Dome Light Upgrade, GMFSV

## Kit Includes:



## Tools required:

Trim removal tool or small flat head screw driver



Power drill and 3/8" step drill bit



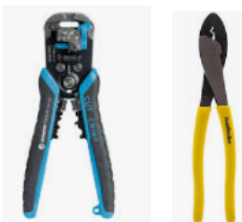
1/4" Plusnut gun



#2, #3 Phillips bit and 11/32" wrench or socket



Wire strippers and crimper





**Step 1: Disconnect the negative OEM battery cable.**

Remove the OEM dome light from the headliner by using a trim tool or a small flat head screw driver.

Unplug the light from the connector.



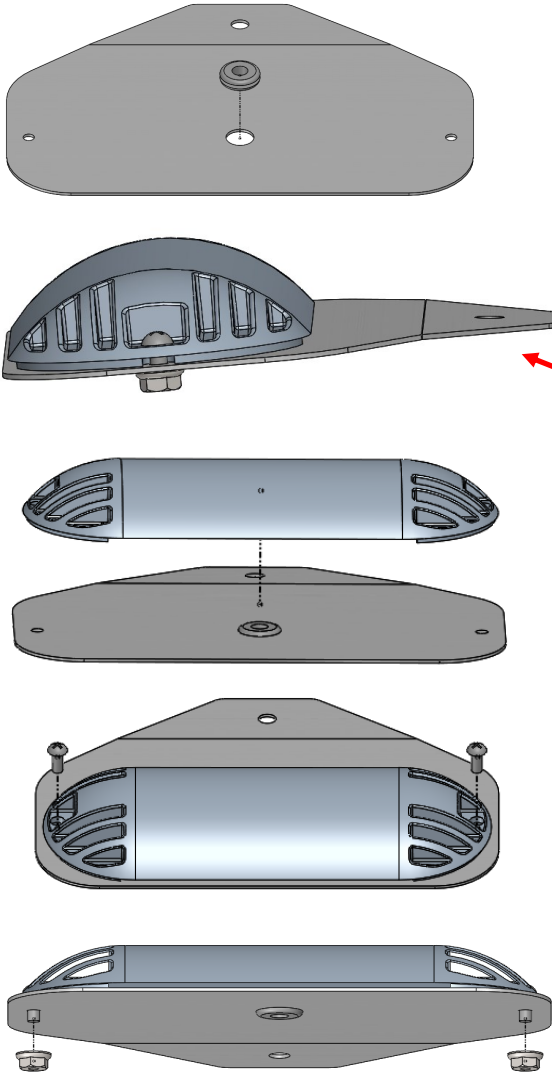
Cut the OEM connector off of the light. Make sure to leave plenty of length on the wires to attach to the new light.

Remove the headliner plastic retainer.



Cut and strip both the black and red wire.

Blunt Cut Ends



**Step 2:** Insert the grommet into the center hole of the plate.

Pull the red and black wires from the ASCO light through the grommet.

Be sure to mount the light to the plate with the bend facing the opposite direction. See picture to the left for reference.

Assemble the light to the plate using FAS0010 and FAS0013.

Crimp one butt-connector onto each wire.



**Step 3:** Drill out the existing hole in the roof bow (where the trim retainer came out of) and insert the plusnut (FAS0052).

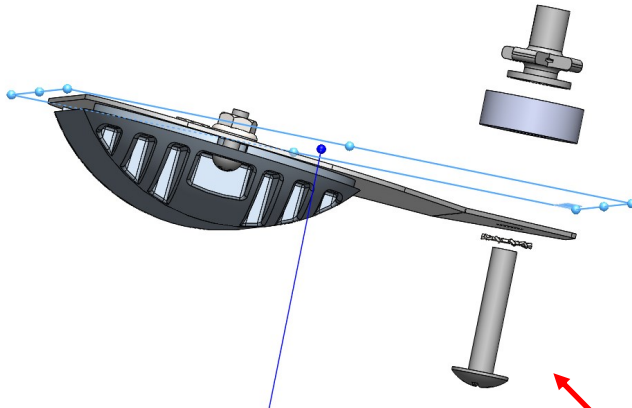




**Step 4:** Use the butt-connectors to attach the red wire from the light to the blue (positive) OEM wire, and the black wires together.

Tape up the extra wire from the OEM light (if applicable) so no shorting occurs.

**Step 5:** Attach the new dome light assembly to the plusnut, using the given spacers (behind the headliner), star washer, and button head screw.



**If headliner is flat,** use one short spacer (03927-1 ), one bolt (FAS0053), and one star washer (FAS0066).

**If headliner is bowed down,** use two tall spacers (03927-2), one long bolt (FAS0064), and one star washer (FAS0066).

\*See picture for order reference. Picture shows flat headliner order with one spacer and short bolt. (Blue square represents the headliner).



The assembly is now complete. Check that the dome light turns on and off with the light switch on the dash, and it also turns on with the opening of any door.