

PURCHASED
COMPONENT
KEY FEATURES

DESCRIPTION OF REQUIREMENTS
DIMENSIONAL REQUIREMENTS (AS SHOWN ON DRAWING)
N/A
LOAD/RATING REQUIREMENT
N/A
MATERIAL REQUIREMENT
N/A
PACKAGING REQUIREMENT
N/A
OTHER REQUIREMENTS
Plug & play harness, does not include alarm.
2020 MDY No vehicle options required



THIS DRAWING IS THE PROPERTY OF ADRIAN STEEL COMPANY AND IS NOT TO BE USED IN ANY MANNER
DETRIMENTAL TO THE INTERESTS OF ADRIAN STEEL COMPANY

TOLERANCES & INSPECTION

UNLESS OTHERWISE SPECIFIED		
ALL BEND ANGLES ARE 90 DEGREES		
ALL DIMENSIONS ARE IN INCHES.		
REFERENCE DIMENSIONS (X.XXX) DO NOT REQUIRE INSPECTION		
FEATURES	HOLES/SLOTS	ANGLES
0.0 = ± .125	0.0 = ± .062	0° = ± 2°
0.00 = ± .062	0.00 = ± .031	0.0° = ± 1°
0.000 = ± .031	0.000 = ± .015	
Material Thickness: per ASTM Std. Weld Callouts per AWS		

RELEASE & REVISIONS

INITIAL ECN:	24579
CURRENT ECN:	25280
ECN DESCRIPTION:	
Scan supplier's print	
REVISED BY: AMB	


PURCHASED
COMPONENT

REFERENCED SUPPLIER AND/OR MANUFACTURER
AAMP
REFERENCED SUPPLIER AND/OR MANUFACTURER PART NUMBER
P-BUA-Super Duty
COLOR (ONLY LIST IF COLOR SPECIFIC)
COMODITY ITEM (Y/N) (YES = ALL DIMENSIONS AND NOTES ARE REFERENCE) (NOTE: DIMENSIONS AND FEATURES MAY VARY FOR A COMODITY ITEM.)
YES

PRINTED DOCUMENT IS UNCONTROLLED

Sheet 1 of 1

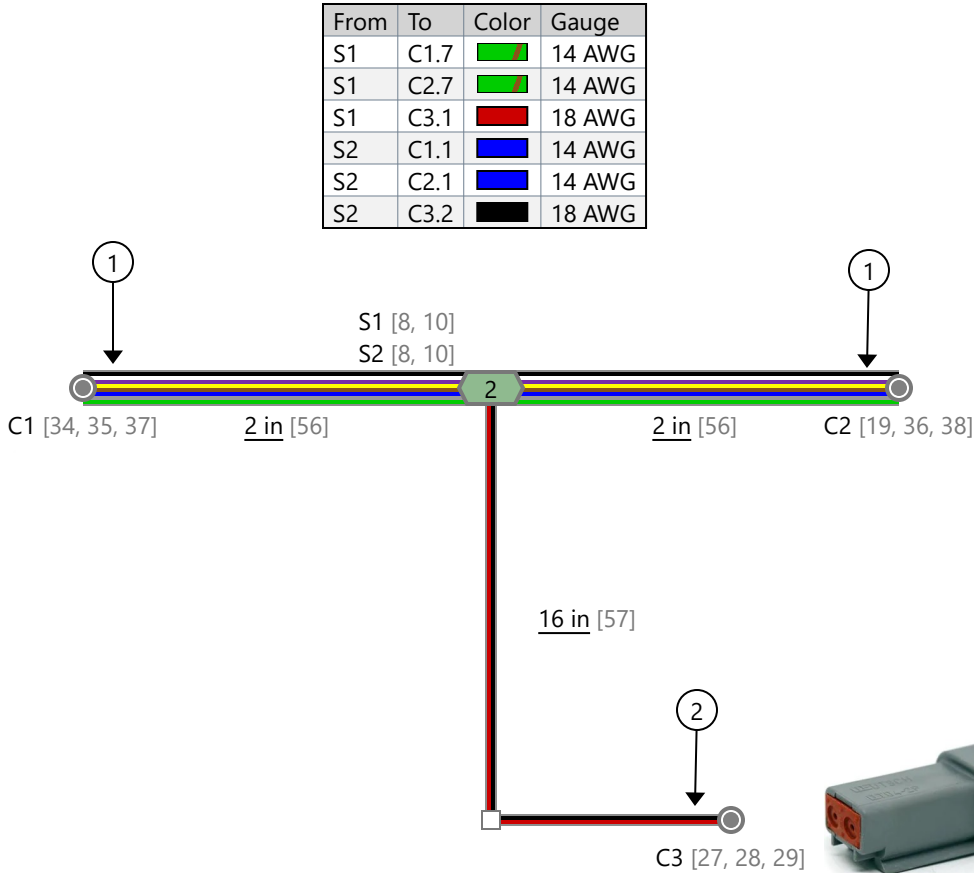
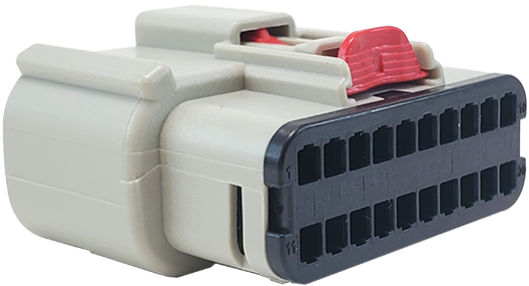
PART / PRODUCT IDENTIFICATION

 ADRIAN STEEL®		ADRIAN STEEL COMPANY 906 JAMES STREET, ADRIAN, MI 49221	REVISION LEVEL A
MAT'L USED:		DESIGNED BY: A. BUSSING	
DESCRIPTION: HARN, BUA SD			
WEIGHT (Lbs.): 1.0	SEGMENT CODE: ALA	PART NUMBER: 64012	

Revisions			
Rev.	Date	Author	Description
1	12/4/2020	Bennet Fisher	Initial Drawing

Coverings	
Id	Assembly
[56]	
[57]	

From	To	Color	Gauge
C1.1	S2		14 AWG
C1.2	C2.2		20 AWG
C1.3	C2.3		18 AWG
C1.4	C2.4		20 AWG
C1.5	C2.5		20 AWG
C1.6	C2.6		18 AWG
C1.7	S1		14 AWG
C1.8	C2.8		20 AWG
C1.9	C2.9		16 AWG
C1.10	C2.10		18 AWG
C1.11	C2.11		14 AWG
C1.12	C2.12		20 AWG
C1.13	C2.13		20 AWG
C1.14	C2.14		18 AWG
C1.15	C2.15		20 AWG
C1.16	C2.16		18 AWG
C1.17	C2.17		18 AWG
C1.18	C2.18		18 AWG
C1.19	C2.19		20 AWG
C1.20	C2.20		20 AWG



From	To	Color	Gauge
C2.1	S2		14 AWG
C2.2	C1.2		20 AWG
C2.3	C1.3		18 AWG
C2.4	C1.4		20 AWG
C2.5	C1.5		20 AWG
C2.6	C1.6		18 AWG
C2.7	S1		14 AWG
C2.8	C1.8		20 AWG
C2.9	C1.9		16 AWG
C2.10	C1.10		18 AWG
C2.11	C1.11		14 AWG
C2.12	C1.12		20 AWG
C2.13	C1.13		20 AWG
C2.14	C1.14		18 AWG
C2.15	C1.15		20 AWG
C2.16	C1.16		18 AWG
C2.17	C1.17		18 AWG
C2.18	C1.18		18 AWG
C2.19	C1.19		20 AWG
C2.20	C1.20		20 AWG

From	To	Color	Gauge
C3.1	S1		18 AWG
C3.2	S2		18 AWG

Notes	
1	Cover wiring with cloth tape; leave 1/2" of exposed wiring behind connector
2	Lock tape split loom behind C3

Title	----	Part Number	P-BUA-SUPER DUTY_	
Description	2020 Ford Super Duty Backup Alarm Harness		Revision	----

	Name	Date
Drawn By	----	----
Eng Approved	----	----
Mfg Approved	----	----
QA	----	----



This document contains confidential and proprietary information that cannot be reproduced or divulged, in whole or in part, without written authorization.

“Compare Installation Instructions that come with the Product to Installation Instructions in ASCO System for accuracy.”



P-BUA-SUPER DUTY

Wiring Harness for Backup Alarm 2017-2021 Ford Super Duty Pickup

INSTALLATION MANUAL





Thank you for purchasing the **P-BUA-SUPER DUTY**

Table of Contents

Page 3 - Tools Required For Installation

WHAT'S INCLUDED:

- Vehicle Specific Wire Harness (P-BUA-SUPER DUTY)

COMPATIBLE ACCESSORIES:

- 97dB Backup Alarm (BUA-97C)
- 97dB White Noise Backup Alarm (BUA-97WNC)



TOOLS REQUIRED:



1. 10mm Nut-setter
2. Impact Drill
3. Diagonal Cutters

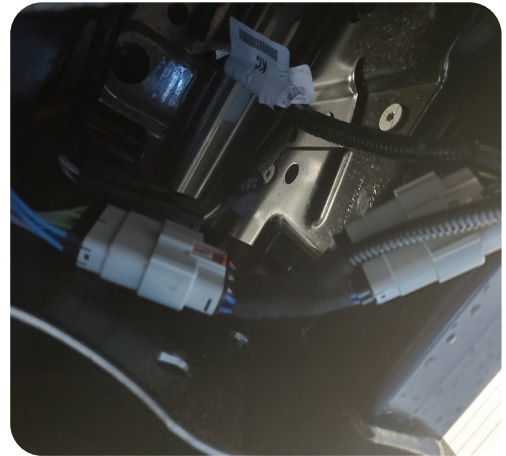
STEP 1:

Locate the OEM inline connector that is on the inside of the passenger side frame rail



STEP 2:

Unplug the OEM connector and install the P-BUA-SUPER DUTY harness between the OEM connectors



STEP 3:

Route the harness over the top side of the frame rail, toward the curb side of the truck



STEP 4:

Use an impact drill and 10mm nut-setter to install a compatible backup alarm on the underside of the vehicle

Note: (2) 10mm TEK screws are provided with the compatible backup alarm



STEP 5:

Plug the backup alarm connector into the mating connector on the P-BUA-SUPER DUTY harness. Secure any excess wiring with cable ties. Use diagonal cutters to remove excess cable tie material.

STEP 6:

Test the backup alarm



Phone – 866-766-2267

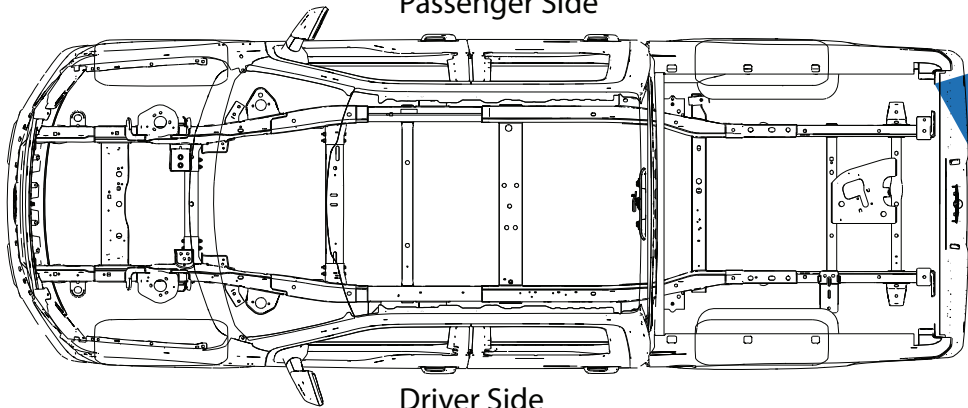
E-Mail – support@aampglobal.com



EchoMaster is a Power Brand of AAMP Global

EchoMaster.com

Passenger Side



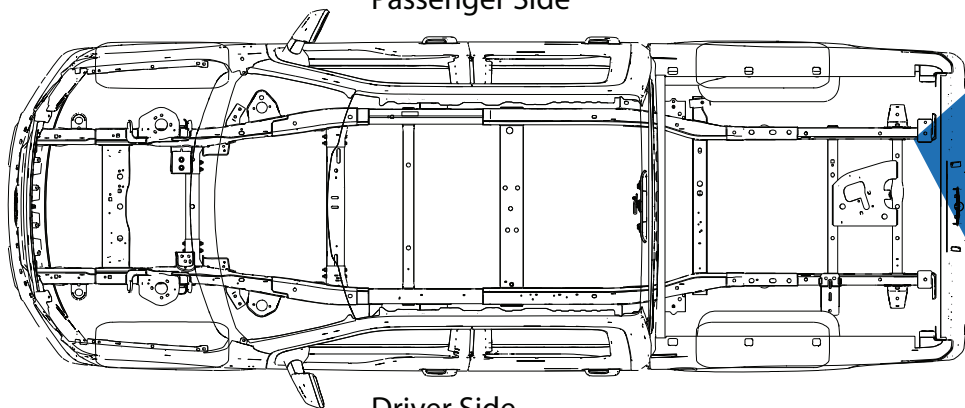
Driver Side

Rear of vehicle



Backup alarm is located below the passenger side tail lamp cavity on the curb side of the passenger side frame rail

Passenger Side



Driver Side



Inline connector is located on inside of passenger side frame rail. To the right of the spare tire.