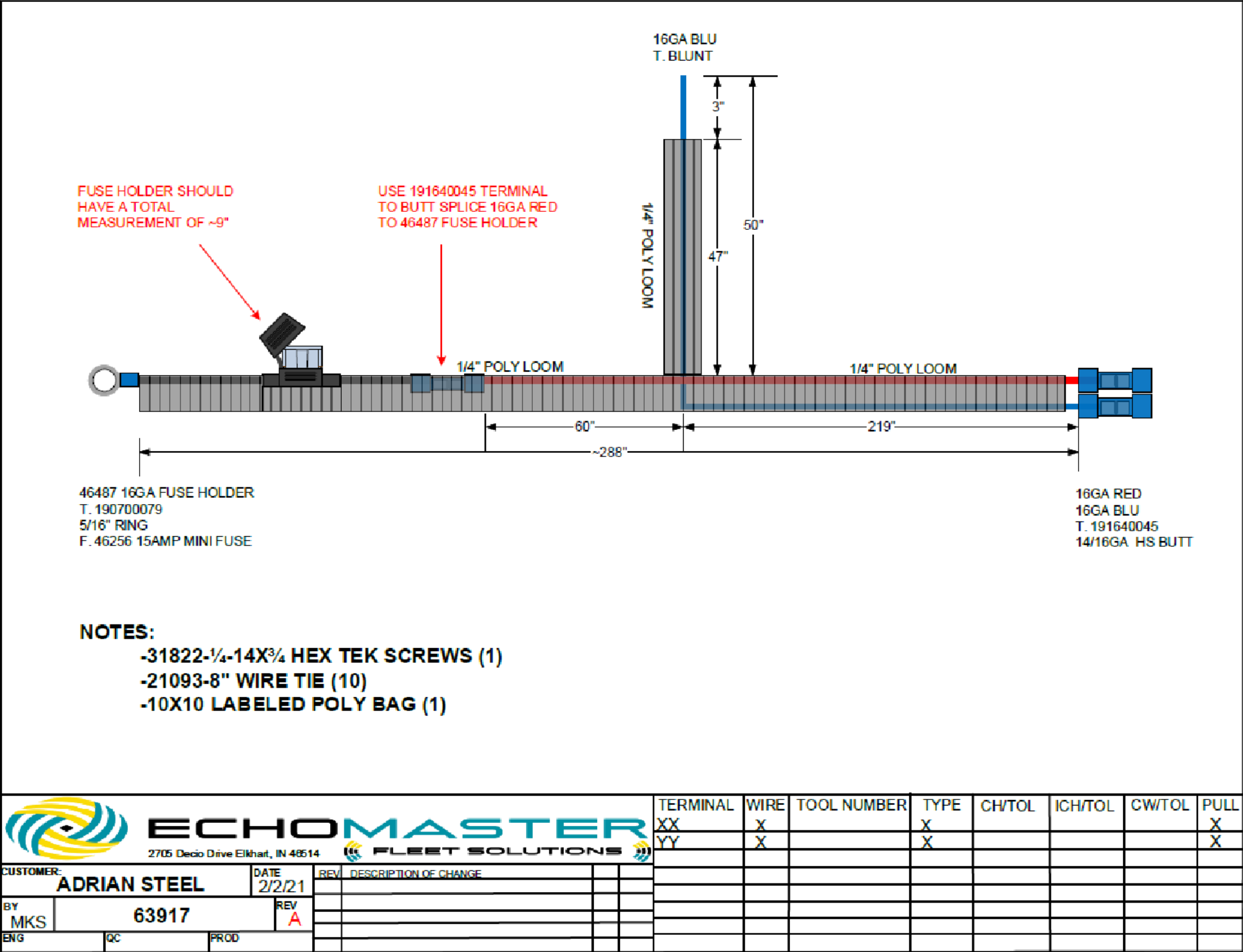


PURCHASED
COMPONENT
KEY FEATURES

DESCRIPTION OF REQUIREMENTS
DIMENSIONAL REQUIREMENTS (AS SHOWN ON DRAWING)
N/A
LOAD/RATING REQUIREMENT
N/A
MATERIAL REQUIREMENT
N/A
PACKAGING REQUIREMENT
N/A
OTHER REQUIREMENTS
Harness provides power to LEER topper CHMSL and dome. 288" length to accomodate Silverado 1500 - 3500.



TOLERANCES & INSPECTION	RELEASE & REVISIONS
UNLESS OTHERWISE SPECIFIED ALL BEND ANGLES ARE 90 DEGREES ALL DIMENSIONS ARE IN INCHES. REFERENCE DIMENSIONS (X.XXX) DO NOT REQUIRE INSPECTION	INITIAL ECN: 24538 CURRENT ECN: 24538 ECN DESCRIPTION: Release REVISED BY: N/A
FEATURES 0.0 = ± .125 0.00 = ± .062 0.000 = ± .031 Material Thickness: per ASTM Std. Weld Callouts per AWS	HOLES/SLOTS 0.0 = ± .062 0.00 = ± .031 0.000 = ± .015
ANGLES 0° = ± 2° 0.0° = ± 1°	

PURCHASED COMPONENT

REFERENCED SUPPLIER AND/OR MANUFACTURER
AAMP

REFERENCED SUPPLIER AND/OR MANUFACTURER PART NUMBER
63917


COLOR (ONLY LIST IF COLOR SPECIFIC)

COMODITY ITEM (Y/N) (YES = ALL DIMENSIONS AND NOTES ARE REFERENCE)
(NOTE: DIMENSIONS AND FEATURES MAY VARY FOR A COMODITY ITEM.)
YES

PRINTED DOCUMENT IS UNCONTROLLED

Sheet 1 of 1

PART / PRODUCT IDENTIFICATION



ADRIAN STEEL®

ADRIAN STEEL COMPANY
906 JAMES STREET, ADRIAN, MI 49221

REVISION LEVEL

A

MAT'L USED:

DESIGNED BY: A. BUSSING

DESCRIPTION:

LEER TOP HRN SIL DM/CHMSL

WEIGHT
(Lbs.): 2.0

SEGMENT
CODE: ELE

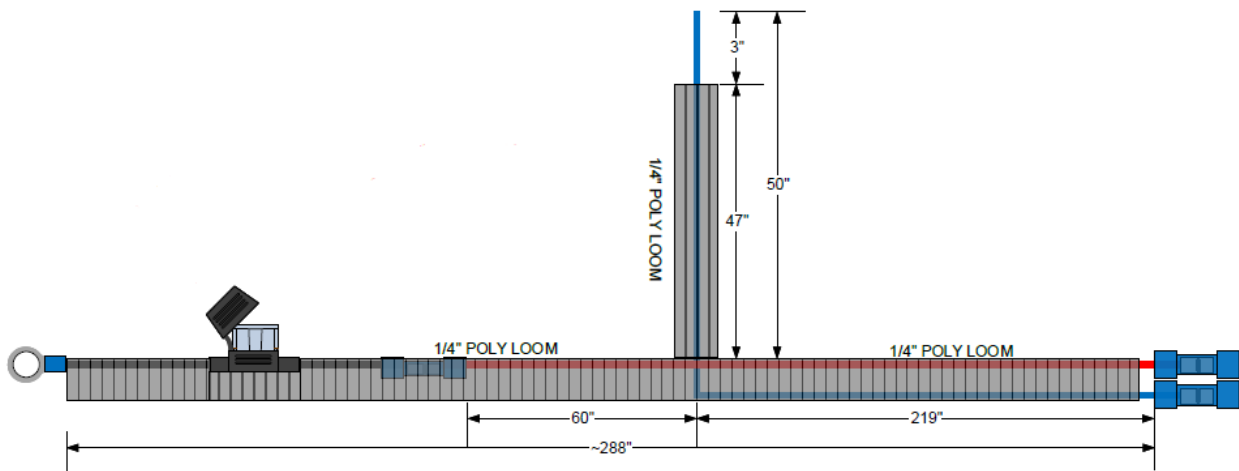
PART NUMBER: 63917

Introduction / Comments:

Install instructions for Chevy Silverado LEER topper harness

Note:

Read all instructions prior to installation. Review the Adrian Steel **GENERAL PRECAUTIONS PAGES (56638)** before attempting installation. Only personnel familiar with using electrical best practices should perform this install. Reference **ELECTRICAL BEST PRACTICES MANUAL (54479)** before attempting installation.



Vehicle integration harness -
Silverado with topper

Wiring diagram

Single blue lead will pass through firewall to the connectors behind the dash. See P.3 for splice information.

Use edge biters along the cowl.

In-line fuse holder w/ ring terminal to battery positive. **Do not insert fuse until install is complete.**

Harness end with two butt connectors will pass down through the engine bay near the Driver's wheel well area. Continue routing along the frame to the back of the vehicle, securing along the OEM harness.

Use the table below to connect the Adrian harness to the Topper wiring.

Adrian	Topper
Red	Red
Blue	Red/White



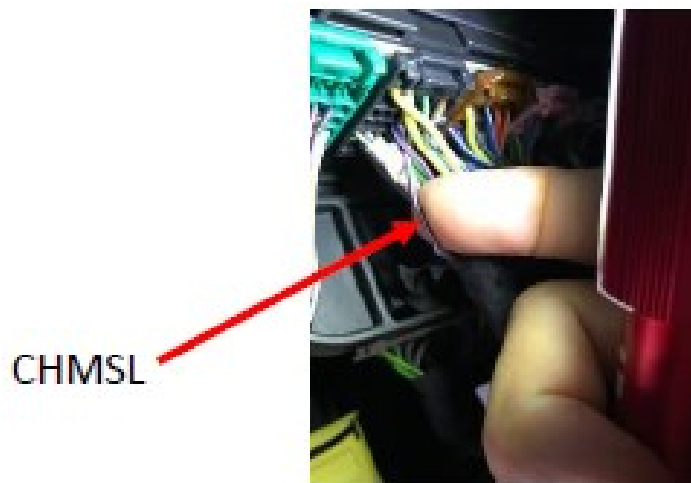
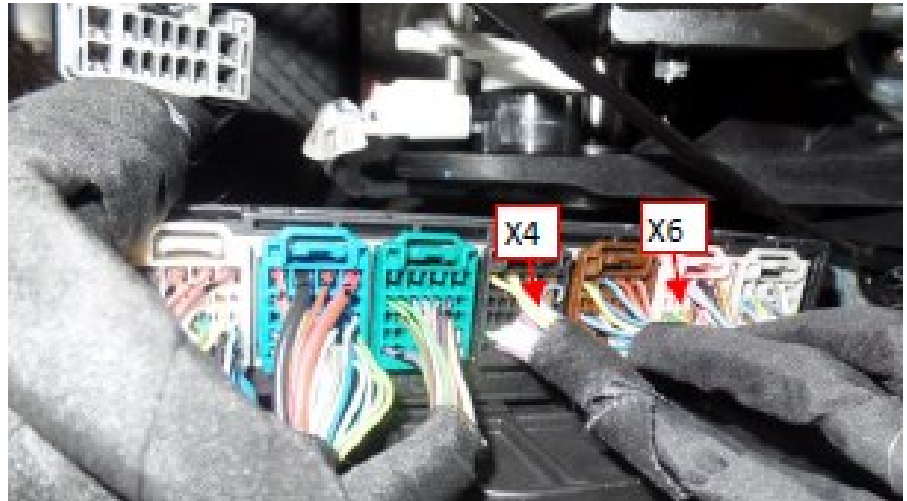
(Topper not shown)

Firewall pass-through is located to the left of the coolant tank on the Driver's side.



Connectors located behind the dash.

Connector X4 (middle, black), Pin 11 - Violet/White wire for CHMSL splice.



*CHMSL: Connector X4, Pin 11
Wire Color: Violet-White shown)*