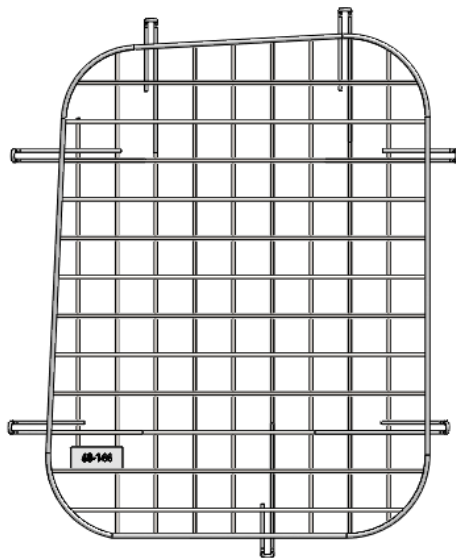


Introduction / Comments:

THESE WINDOW SCREEN KIT IS DESIGNED TO FIT THE PROMASTER CITY STREET AND CURB SIDE REAR HINGED CARGO DOORS.

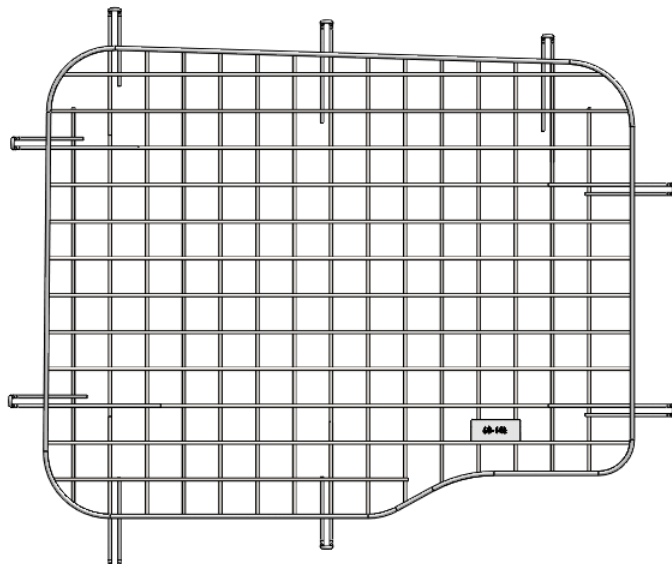
Note:

It is advised that all fasteners used in this assembly and installation of this Rack should be checked for tightness at the following intervals: @ 2-weeks and again @ 6-weeks of operation. This preventive maintenance step must be completed to ensure your package gives you long service life.



60-144
WINDOW SCREEN KIT,
CURBSD (Passnger) SIDE REAR
HINGED CARGO DOOR

60-145
WINDOW SCREEN KIT,
STREET SIDE (Driver) SIDE
REAR HINGED CARGO



- PRECAUTIONS -



CAUTION



**THE USE OF AIR IMPACT TOOLS CAN
OVER-TORQUE FASTENERS AND
CAUSE FASTENER FAILURE!**



CAUTION



**ALL INSTALLATION HOLES SHOULD BE SEALED
WITH SILICON OR BUTYL SEALANT TO PREVENT
EXHAUST FUMES FROM ENTERING THE VEHICLE!**



DANGER



**INSPECT FOR FUEL TANK, FUEL LINES, BRAKE LINES, HIGH
VOLTAGE BATTERIES AND ELECTRICAL LINES PRIOR TO
DRILLING TO AVOID DAMAGING CRITICAL VEHICLE SYSTEMS
OR INJURY TO INSTALLER DURING INSTALLATION PROCESS!**



CAUTION



**TO AVOID DAMAGING THE VEHICLE ALWAYS
USE DRILL STOPS WHEN DRILLING ANY IN-
STALLATION HOLES!**



- IMPORTANT WARRANTY REQUIREMENTS -

1. SUBSTITUTING ADRIAN STEEL SPECIFIED FASTENERS FOR ASSEMBLY AND/OR INSTALLATION WILL VOID YOUR PRODUCT WARRANTY.
2. ALL HOLES DRILLED INTO VEHICLE SHOULD HAVE THE RAW METAL EDGES SEALED WITH A SELF-ETCHING PRIMER TO RESIST CORROSION AND POTENTIAL FASTENER POINT FAILURE.
3. ALL FASTENERS USED IN THE INSTALLATION OF THIS PRODUCT SHOULD BE TIGHTENED TO THE TORQUE(S) SPECIFIED IN THESE INSTRUCTIONS.
4. THESE INSTRUCTIONS SHOULD BE KEPT WITH THE VEHICLE.

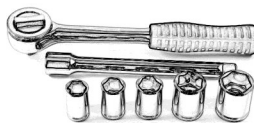
THE BASIC TOOLS NEEDED FOR MOST INSTALLATIONS



DRILL



DRILL BIT WITH
STOP



RATCHET, SOCKETS
AND/OR WRENCHES



SCREWDRIVERS



MEASURING TAPE

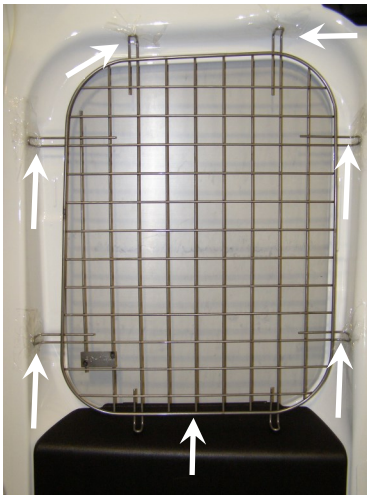
ADDITIONAL TOOLS MAY BE NEEDED FOR THIS INSTALLATION AND THEY WILL BE IDENTIFIED IN THE STEPS THAT FOLLOW.

TYPICAL SCREEN MOUNTING:

THESE CARGO AREA SCREENS ARE DESIGNED TO MOUNT DIRECTLY TO THE BODY METAL AROUND THE WINDOW. USE THE SCREEN AS YOUR INSTALLATION TEMPLATE.

SIMPLY PLACE THE STREET SIDE AND CURB SIDE WINDOW SCREEN OVER THE WINDOWS TO BE GUARDED AS SHOWN BELOW. TAPE WIRE SCREEN TO GLASS TO HOLD IN PLACE. MARK ALL LOOP ATTACHING POINTS. THEN REMOVE SCREEN, CENTER PUNCH AND DRILL ALL THESE ATTACHING POINTS WITH A 3/16" DRILL BIT. DRILL THRU SHEET METAL AND PLASTIC TRIM PANELS WITH CARE. DO NOT DRILL THRU TO OUTSIDE OF VAN, OR ANY ELECTRICAL WIRING. SECURE SCREEN IN PLACE WITH THE FASTENERS LISTED BELOW.

Fig. 1
"60-144 Wdw Scrn,
Curb Side (Passenger) Rear Hinged
Cargo Door, Promaster City



60-144 WDW SCR N FASENERS
FAS0041 Qty = 7
FAS0066 Qty = 7

Fig. 2
"60-145 Wdw Scrn
Street Side (Driver) Rear Hinged
Cargo Door, Promaster City

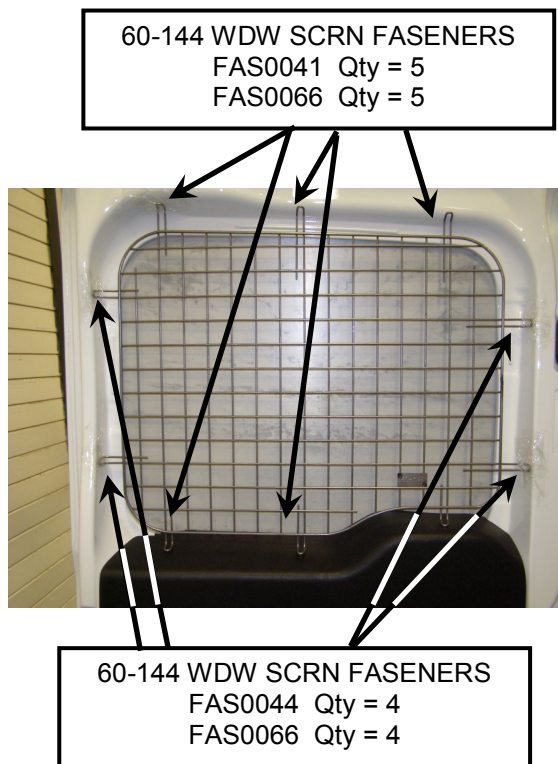
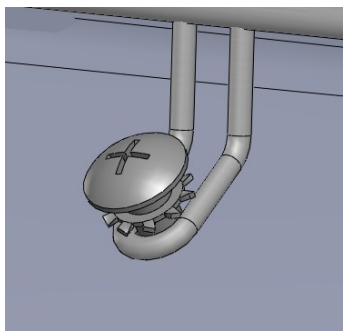


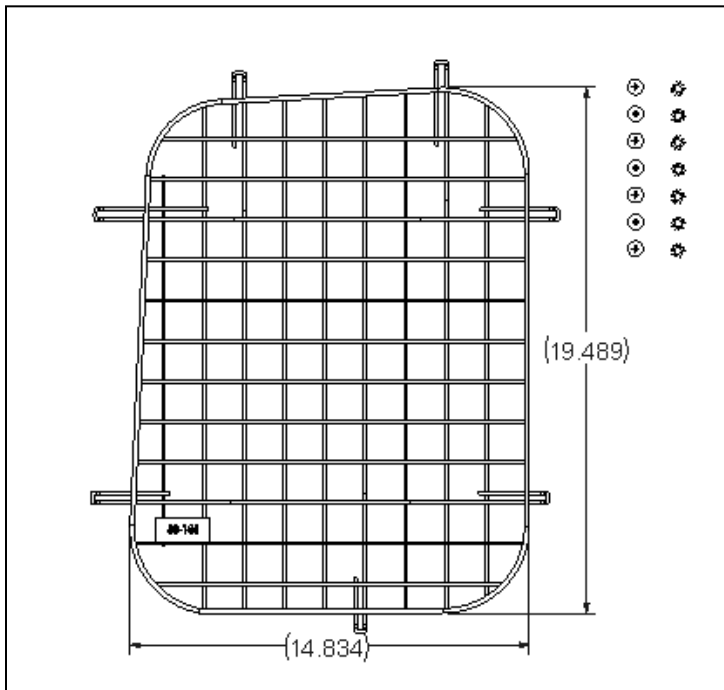
Fig. 3
Typical Window
Screen Fasteners
FAS0041//FAS0044
FAS0066



WIRE WINDOW SCREENS ARE DESIGNED TO FIT BASE TRIM LEVEL "CARGO" VAN WINDOWS. IF VEHICLE HAS INTERIOR TRIM, CARPET, ETC. THIS MAY HAVE TO BE REMOVED OR MODIFIED FOR THE SCREENS TO FIT PROPERLY.

**ADRIAN STEEL®**

Cargo Management Solutions for Commercial Vehicles

60-144 “Wdw Scrn, PMC, CrbSd Rear Door ”**PRODUCT WEIGHT****2.0 lbs****WIDTH x DEPTH x HEIGHT****n/a x n/a x n/a****CAPACITY****n/a****COLOR****GRAY****CATALOG NUMBER****60-144****PRODUCT FEATURES**

Window screens are contoured to fit the rear passenger side hinged cargo door of the Promaster City vehicle.
Non-glare gray powder coat finish so that it is visible from outside the vehicle to deter theft of cargo contents and to prevent damage to the window from shifting cargo.

SEE PAGE 2 FOR APPLICATION NOTES AND ACCESSORIES, OTHER PRODUCTS THAT WORK WITH THIS UNIT.

PAGE 1 of 2

The information contained in this document is the sole property of ADRIAN STEEL COMPANY. ADRIAN STEEL COMPANY retains the right to modify and/or change the product of its design at any time without prior notification.



CATALOG NUMBER 60-144

PRODUCT APPLICATION

To deter theft of cargo contents and to prevent damage to the window from shifting cargo.

ACCESSORIES THAT WILL WORK WITH THIS PRODUCT

CATALOG NUMBER

DESCRIPTION

SPECIAL APPLICATION NOTES

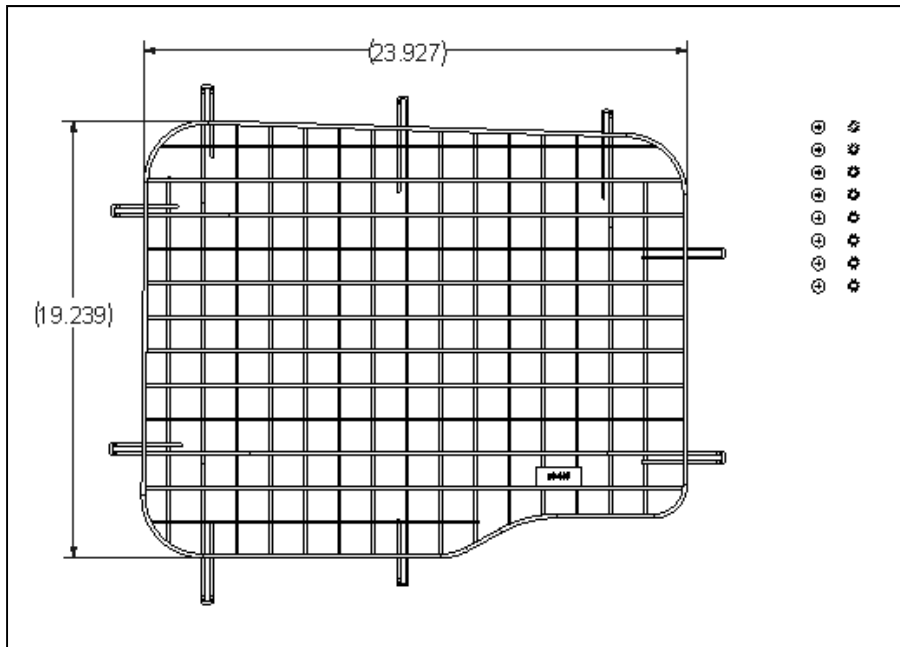
n/a

PAGE 2 of 2

The information contained in this document is the sole property of ADRIAN STEEL COMPANY. ADRIAN STEEL COMPANY retains the right to modify and/or change the product of its design at any time without prior notification.

**ADRIAN STEEL**

Cargo Management Solutions for Commercial Vehicles

60-145 “Wdw Scrn, PMC, StrSd Rear Door ”**PRODUCT WEIGHT****2.19 lbs****WIDTH x DEPTH x HEIGHT****n/a x n/a x n/a****CAPACITY****n/a****COLOR****GRAY****CATALOG NUMBER****60-145****PRODUCT FEATURES**

Window screen is contoured to fit the rear driver side hinged cargo door of the Promaster City vehicle.

Non-glare gray powder coat finish so that it is visible from outside the vehicle to deter theft of cargo contents and to prevent damage to the window from shifting cargo.

SEE PAGE 2 FOR APPLICATION NOTES AND ACCESSORIES, OTHER PRODUCTS THAT WORK WITH THIS UNIT.

PAGE 1 of 2

The information contained in this document is the sole property of ADRIAN STEEL COMPANY. ADRIAN STEEL COMPANY retains the right to modify and/or change the product of its design at any time without prior notification.

**ADRIAN STEEL®**Cargo Management Solutions for Commercial Vehicles**60-145 “Wdw Scrn, PMC, StrSd Rear Door ”****CATALOG NUMBER 60-145*****PRODUCT APPLICATION***

To deter theft of cargo contents and to prevent damage to the window from shifting cargo.

ACCESSORIES THAT WILL WORK WITH THIS PRODUCT**CATALOG NUMBER*****DESCRIPTION******SPECIAL APPLICATION NOTES*****n/a****PAGE 2 of 2**

The information contained in this document is the sole property of ADRIAN STEEL COMPANY. ADRIAN STEEL COMPANY retains the right to modify and/or change the product of its design at any time without prior notification.