

PURCHASED
COMPONENT
KEY FEATURES

Note:
Ecco 3rd Brake Light Mount for 5550 Series
Manufacturer P/N: EZ1001B-FH

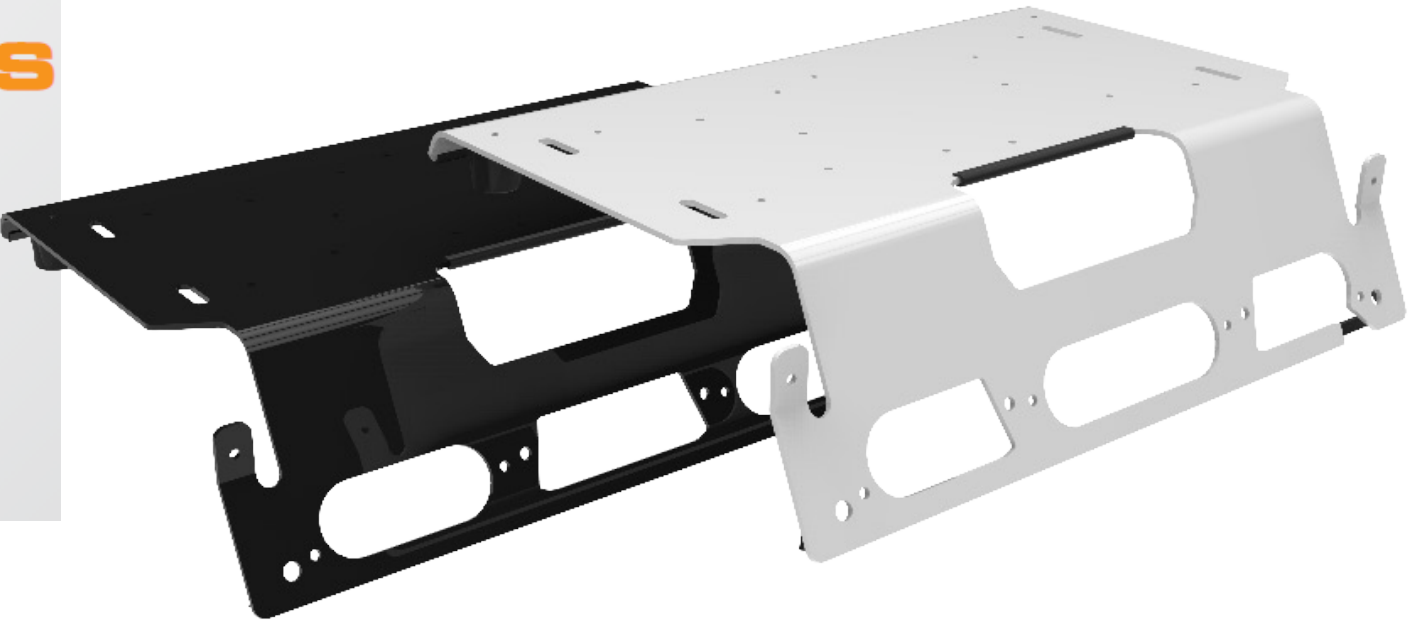
Features & Benefits

- Incorporates the existing dimension of F150 3rd brake lights without interference or modification to the function of the OEM 3rd brake lights
- Clean-looking and easy-install mount with desireable features such as rubber mounting feet to avoid damage to the vehicle and no need to drill mounting holes
- Easily and reliably mount a number of products to aluminum-topped vehicles including beacons, remote spotlights, safety directors, and minibars
- Industry accepted material and coating designed to prevent corrosion and avoid mechanical and cosmetic issues
- Low-profile lightweight aluminum design coupled with secure mounting to ensure there will not be excessive with resistance, vibration or "fluttering"



EZ1001
HALOGEN SERIES

ECCO's 3rd brake light platform for halogen brake lights is constructed with durability in mind for even the toughest of jobs. The platform mounts behind the factory 3rd brake light and clamps to the body opening and the factory light is then reinstalled over the mount. The design meets the demands of heavy-duty applications without damaging the vehicle and enables mounting of products such as beacons and worklamps to the top of the truck. This mount is designed to fit the Ford F150, F250 and F350.



EZ1001 Halogen Series 3rd Brake Light Mount

THIS DRAWING IS THE PROPERTY OF ADRIAN STEEL COMPANY AND IS NOT TO BE USED IN ANY MANNER
DETRIMENTAL TO THE INTERESTS OF ADRIAN STEEL COMPANY

TOLERANCES & INSPECTION

UNLESS OTHERWISE SPECIFIED		
ALL BEND ANGLES ARE 90 DEGREES		
ALL DIMENSIONS ARE IN INCHES.		
REFERENCE DIMENSIONS (X.XXX) DO NOT REQUIRE INSPECTION		
FEATURES	HOLES/SLOTS	ANGLES
0.0 = ± .125	0.0 = ± .062	0° = ± 2°
0.00 = ± .062	0.00 = ± .031	0.0° = ± 1°
0.000 = ± .031	0.000 = ± .015	
Material Thickness: per ASTM Std. Weld Callouts per AWS		

RELEASE & REVISIONS

INITIAL ECN:	22500
CURRENT ECN:	22500
ECN DESCRIPTION:	
RELEASE TO PRODUCTION	
REVISED BY:	EMS


PURCHASED
COMPONENT

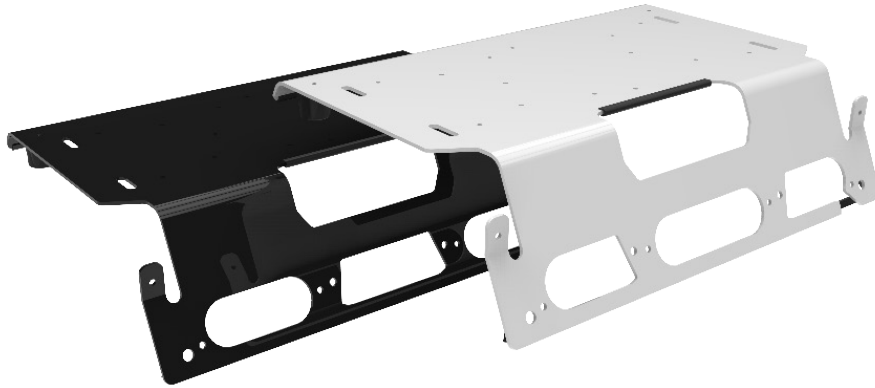
REFERENCED SUPPLIER AND/OR MANUFACTURER
Ecco
REFERENCED SUPPLIER AND/OR MANUFACTURER PART NUMBER
EZ1001B-FH
COLOR (ONLY LIST IF COLOR SPECIFIC)
COMODITY ITEM (Y/N) (YES = ALL DIMENSIONS AND NOTES ARE REFERENCE) (NOTE: DIMENSIONS AND FEATURES MAY VARY FOR A COMODITY ITEM.)
NO

PRINTED DOCUMENT IS UNCONTROLLED

Sheet 1 of 1

PART / PRODUCT IDENTIFICATION

		ADRIAN STEEL®		ADRIAN STEEL COMPANY 906 JAMES STREET, ADRIAN, MI 49221		REVISION LEVEL A	
MAT'L USED:				DESIGNED BY: EMS			
DESCRIPTION: CHMSL Mount Ecco 5550							
WEIGHT (Lbs.): 5		SEGMENT CODE: VSA			PART NUMBER: 59327		



ACCESSORIES

3rd BRAKE LIGHT Platform Mounting Plate

ECCO's 3rd brake light platform mount was constructed with durability in mind for even the toughest of jobs. The platform mounts behind the factory 3rd brake light and bolts to the brake light opening using custom designed hardware. The factory light is reinstalled over the mount, but does not support the mount. The design meets the demands of heavy-duty applications. The mounts are designed to fit the Ford F150, F250 and F350 in 2 versions (LED and Halogen) and 2 colors (black and white).

Models

PART NO.	VEHICLE MODEL	COLOR	TYPE
EZ1000B-FL	2015 to 2019 F150, F250, F350	Black	LED
EZ1000W-FL	2015 to 2019 F150, F250, F350	White	LED
EZ1001B-FH	2015 to 2019 F150, F250, F350	Black	Halogen
EZ1001W-FH	2015 to 2019 F150, F250, F350	White	Halogen

Features & Benefits

- Incorporates the existing dimension of F150 3rd brake lights without interference or modification to the function of the OEM 3rd brake lights
- Clean-looking and easy-install mount with desirable features such as rubber mounting feet to avoid damage to the vehicle and no need to drill mounting holes
- Easily and reliably mount a number of products to aluminum-topped vehicles including beacons, remote spotlights, safety directors, and minibars
- Industry accepted material and coating designed to prevent corrosion and avoid mechanical and cosmetic issues
- Low-profile lightweight aluminum design coupled with secure mounting to ensure there will not be excessive resistance, vibration or "fluttering"





ECCO® 3rd Brake Light Mounting kit



WARNING!

Failure to install or use this product according to manufacturer's recommendations may result in property damage, serious bodily/personal injury, and/or death to you and those you are seeking to protect!



Do not install and/or operate this safety product unless you have read and understand the safety information contained in this manual.

1. Proper installation combined with operator training in the use, care, and maintenance of emergency warning devices are essential to ensure the safety of you and those you are trying to protect.
2. Exercise caution when working with live electrical connections.
3. Proper placement and installation are vital to the performance of this warning device. Install this product so that output performance of the system is maximized and the controls are placed within convenient reach of the operator so that s/he can operate the system without losing eye contact with the roadway.
4. It is the responsibility of the vehicle operator to ensure during use that all features of this product work correctly. In use, the vehicle operator should ensure the projection of the warning signal is not blocked by vehicle components (i.e., open trunks or compartment doors), people, vehicles, or other obstructions.
5. The use of this or any other warning device does not ensure all drivers can or will observe or react to a warning signal. Never take the right-of-way for granted. It is your responsibility to be sure you can proceed safely before entering an intersection, driving against traffic, responding at a high rate of speed, walking on or around traffic lanes.
6. This equipment is intended for use by authorized personnel only. The user is responsible for understanding and obeying all laws regarding warning signal devices. Therefore, the user should check all applicable city, state, and federal laws and regulations. The manufacturer assumes no liability for any loss resulting from the use of this warning device.



WARNING!

Maximum recommended vehicle speed for safe operation using the 3rd Brake Light Mount is 80 mph (129 km/h) or POSTED SPEED LIMIT. Higher speeds could cause the mount to fail, which could cause damage to other vehicles, and injury or death to the passengers.

Specifications:

Size: 17.7" L X 12.5" W X 4.7" H
Weight: 3.1 lbs.

Installation & Mounting:

Carefully examine the unit for damage. If damage is found, contact the transit company or ECCO. Do not use broken or damaged parts.

Ensure the mounting kit is compatible with the vehicle type and light style, i.e., halogen bulb or LED, prior to installation.

1. Completely uninstall the 3rd brake light and set aside.
2. Install product(s) (not including the brake light) on the mounting plate.
3. Align the mounting holes on the mounting plate with the third brake light mounting holes in the vehicle body as shown in FIGURE 1.
4. Place the mounting clamps inside the vehicle body in the position shown in FIGURE 2. Line up the straight diagonal edges. The mounting clamps and the mounting plate should sandwich the body of the vehicle as shown in FIGURE 3. Hold the mounting brackets in place by hand and loosely secure into place with the supplied screws.
5. Readjust the mounting plate placement as necessary and torque the screws to 15 in-lbs.
6. If required, route power wire, using notch in mount as entry point.
7. Reinstall the previously removed third brake light.

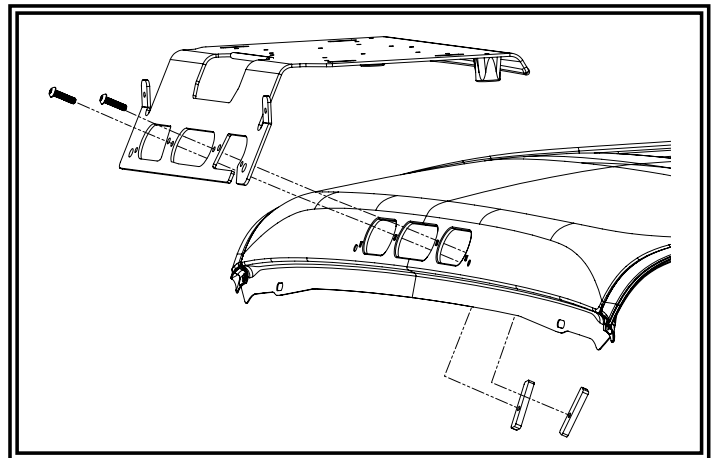


FIGURE 1

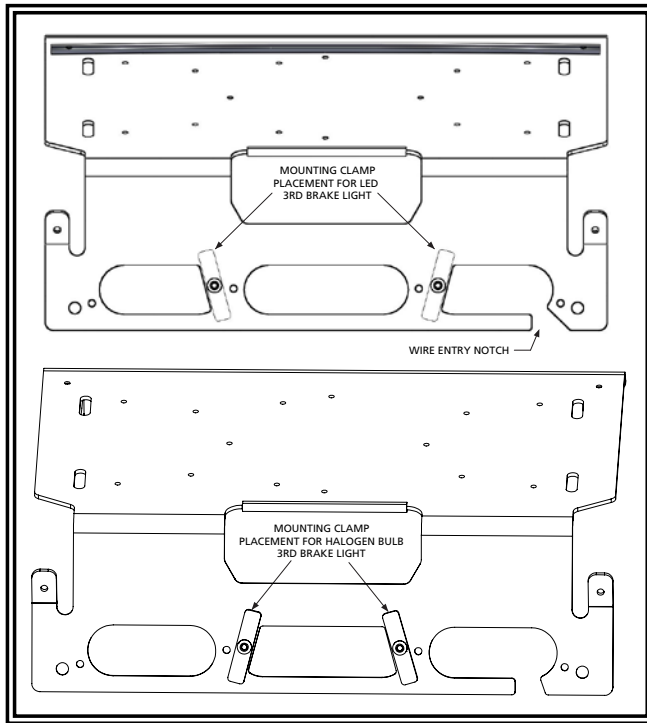


FIGURE 2

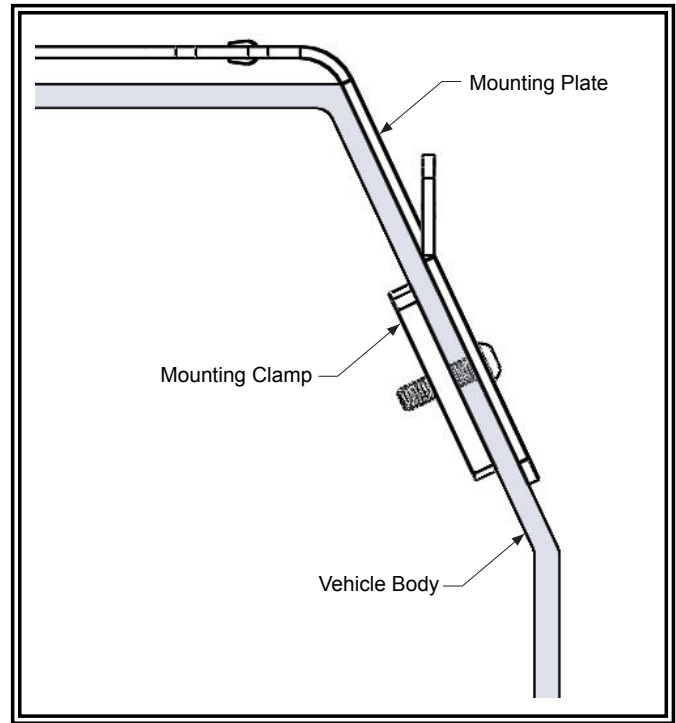


FIGURE 3

Manufacturer Limited Warranty and Limitation of Liability:

Manufacturer warrants that on the date of purchase, this product will conform to Manufacturer's specifications for this product (which are available from the Manufacturer upon request). This Limited Warranty extends for thirty-six (36) months from the date of purchase.

DAMAGE TO PARTS OR PRODUCTS RESULTING FROM TAMPERING, ACCIDENT, ABUSE, MISUSE, NEGLIGENCE, UNAPPROVED MODIFICATIONS, FIRE OR OTHER HAZARD; IMPROPER INSTALLATION OR OPERATION; OR NOT BEING MAINTAINED IN ACCORDANCE WITH THE MAINTENANCE PROCEDURES SET FORTH IN MANUFACTURER'S INSTALLATION AND OPERATING INSTRUCTIONS VOIDS THIS LIMITED WARRANTY.

Exclusion of Other Warranties:

MANUFACTURER MAKES NO OTHER WARRANTIES, EXPRESSED OR IMPLIED. THE IMPLIED WARRANTIES FOR MERCHANTABILITY, QUALITY OR FITNESS FOR A PARTICULAR PURPOSE, OR ARISING FROM A COURSE OF DEALING, USAGE OR TRADE PRACTICE ARE HEREBY EXCLUDED AND SHALL NOT APPLY TO THE PRODUCT AND ARE HEREBY DISCLAIMED, EXCEPT TO THE EXTENT PROHIBITED BY APPLICABLE LAW. ORAL STATEMENTS OR REPRESENTATIONS ABOUT THE PRODUCT DO NOT CONSTITUTE WARRANTIES.

Remedies and Limitation of Liability:

MANUFACTURER'S SOLE LIABILITY AND BUYER'S EXCLUSIVE REMEDY IN CONTRACT, TORT (INCLUDING NEGLIGENCE), OR UNDER ANY OTHER THEORY AGAINST MANUFACTURER REGARDING THE PRODUCT AND ITS USE SHALL BE, AT MANUFACTURER'S DISCRETION, THE REPLACEMENT OR REPAIR OF THE PRODUCT, OR THE REFUND OF THE PURCHASE PRICE PAID BY BUYER FOR NON-CONFORMING PRODUCT. IN NO EVENT SHALL MANUFACTURER'S LIABILITY ARISING OUT OF THIS LIMITED WARRANTY OR ANY OTHER CLAIM RELATED TO THE MANUFACTURER'S PRODUCTS EXCEED THE AMOUNT PAID FOR THE PRODUCT BY BUYER AT THE TIME OF THE ORIGINAL PURCHASE. IN NO EVENT SHALL MANUFACTURER BE LIABLE FOR LOST PROFITS, THE COST OF SUBSTITUTE EQUIPMENT OR LABOR, PROPERTY DAMAGE, OR OTHER SPECIAL, CONSEQUENTIAL, OR INCIDENTAL DAMAGES BASED UPON ANY CLAIM FOR BREACH OF CONTRACT, IMPROPER INSTALLATION, NEGLIGENCE, OR OTHER CLAIM, EVEN IF MANUFACTURER OR A MANUFACTURER'S REPRESENTATIVE HAS BEEN ADVISED OF THE POSSIBILITY OF SUCH DAMAGES. MANUFACTURER SHALL HAVE NO FURTHER OBLIGATION OR LIABILITY WITH RESPECT TO THE PRODUCT OR ITS SALE, OPERATION AND USE, AND MANUFACTURER NEITHER ASSUMES NOR AUTHORIZES THE ASSUMPTION OF ANY OTHER OBLIGATION OR LIABILITY IN CONNECTION WITH SUCH PRODUCT.

This Limited Warranty defines specific legal rights. You may have other legal rights which vary from jurisdiction to jurisdiction. Some jurisdictions do not allow the exclusion or limitation of incidental or consequential damages.



833 West Diamond St
Boise, Idaho 83705

Customer Service

USA 800-635-5900

UK +44 (0)113 237 5340

AUS +61 (0)3 63322444

www.eccoesg.com