

Introduction / Comments:

This rail kit is designed to fit in your 159 wheel base Promaster vehicle, standard and high roof use the same kit.

Note:

It is advised that all fasteners used in this assembly and installation should be checked for tightness at the following intervals: @ 2-weeks and again @ 6-weeks of operation. This preventive maintenance step must be completed to ensure your Partition gives you long service life.



**58676
RAIL KIT, 159 WB
PROMASTER**

- PRECAUTIONS -





 **CAUTION** 
**THE USE OF AIR IMPACT TOOLS CAN
OVER-TORQUE FASTENERS AND
CAUSE FASTENER FAILURE!**



 **CAUTION** 
**ALL INSTALLATION HOLES SHOULD BE SEALED
WITH SILICON OR BUTYL SEALANT TO PREVENT
EXHAUST FUMES FROM ENTERING THE VEHICLE!**



 **DANGER** 
**INSPECT FOR FUEL TANK, FUEL LINES, BRAKE LINES, HIGH
VOLTAGE BATTERIES AND ELECTRICAL LINES PRIOR TO
DRILLING TO AVOID DAMAGING CRITICAL VEHICLE SYSTEMS
OR INJURY TO INSTALLER DURING INSTALLATION PROCESS!**



 **CAUTION** 
**TO AVOID DAMAGING THE VEHICLE ALWAYS
USE DRILL STOPS WHEN DRILLING ANY IN-
STALLATION HOLES!**



- IMPORTANT WARRANTY REQUIREMENTS -

1. SUBSTITUTING ADRIAN STEEL SPECIFIED FASTENERS FOR ASSEMBLY AND/OR INSTALLATION WILL VOID YOUR PRODUCT WARRANTY.
2. ALL HOLES DRILLED INTO VEHICLE SHOULD HAVE THE RAW METAL EDGES SEALED WITH A SELF-ETCHING PRIMER TO RESIST CORROSION AND POTENTIAL FASTENER POINT FAILURE.
3. ALL FASTENERS USED IN THE INSTALLATION OF THIS PRODUCT SHOULD BE TIGHTENED TO THE TORQUE(S) SPECIFIED IN THESE INSTRUCTIONS.
4. THESE INSTRUCTIONS SHOULD BE KEPT WITH THE VEHICLE.

THE BASIC TOOLS NEEDED FOR MOST INSTALLATIONS



DRILL



DRILL BIT WITH
STOP



RATCHET, SOCKETS
AND/OR WRENCHES



SCREWDRIVERS



MEASURING TAPE

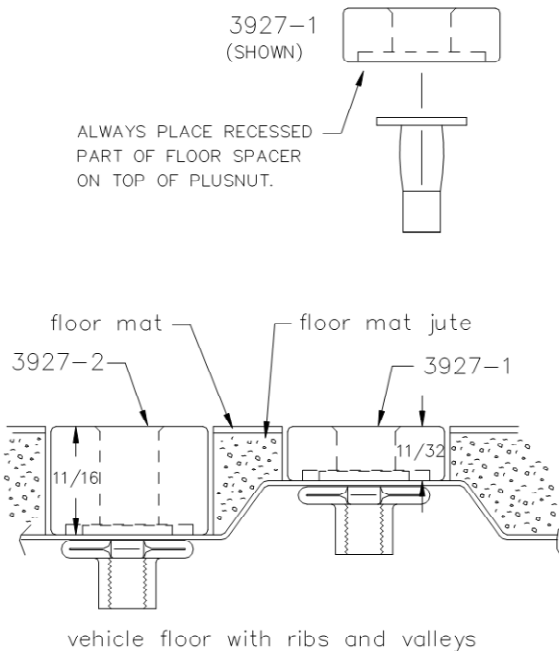
ADDITIONAL TOOLS MAY BE NEEDED FOR THIS INSTALLATION AND THEY WILL BE IDENTIFIED IN THE STEPS THAT FOLLOW.

If your vehicle contains carpet or a rubber floor mat you will need to prepare the mounting location. Position the product to be installed into the vehicle and once you are satisfied with the mounting locations, mark the mounting locations. Using a 1-3/16" diameter carpet cutter (P/N: 31183-0). Select the appropriate floor spacers as shown in the illustration. Set those aside for use later into the installation process.

Using the correct drill bit size for the selected plusnut, drill the mounting holes in the vehicle sheet metal to prepare for installing the plusnuts.

If you are thru-bolting at any of the locations simply drill a hole that is 1/16" larger than the bolt size(s) for those locations.

Once you have drilled the holes into the vehicle, the raw metal edges should be sealed using a self-etching primer to resist corrosion and potential fastener point failure.



A PLUSNUT (RIVNUT) SETTING TOOL IS REQUIRED FOR PLUSNUT (RIVNUT) INSTALLATION AND IS SUPPLIED WITH THIS KIT. OR USE AN AIR POWERED PLUSNUT SETTING GUN.

1/4-20UNC Plusnut (FAS0052) Use 3/8" dia. drill w/stop

FAS0080 SCREW, HXHD, 1/4-20UNCx2.00", G8

FAS0067 WASHER, FLAT, 1/4"ID

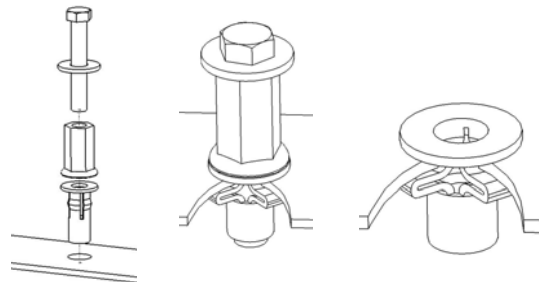
22200-0 PLUSNUT TOOL

5/16-18UNC Plusnut (FAS0091) Use 1/2" dia. drill w/stop

FAS0095 SCREW, HXHD, 5/16-18UNCx2.00", G8

FAS0086 WASHER, FLAT, 5/16"ID

22200-0 PLUSNUT TOOL

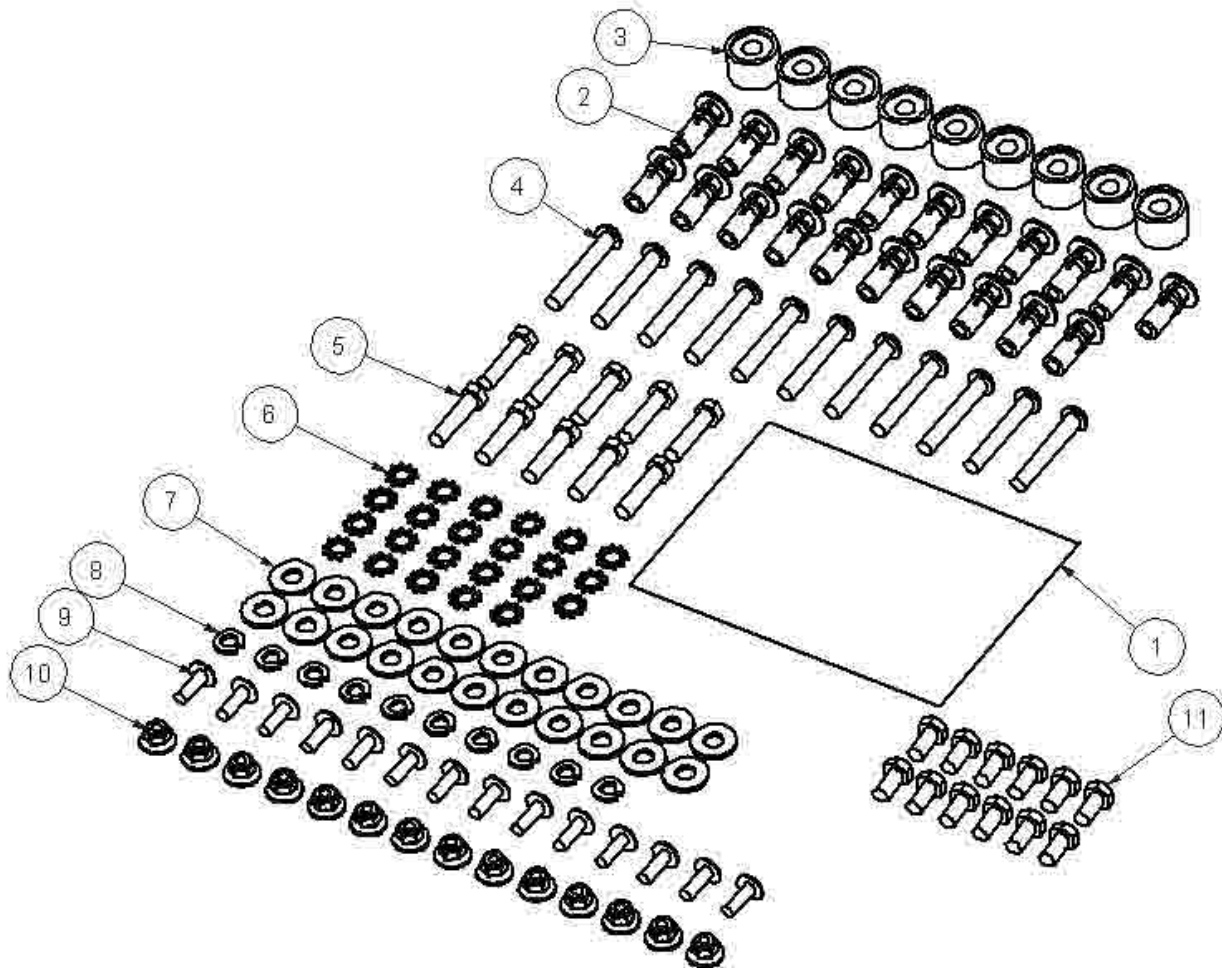


Place barrel of the plusnut body in sheet metal thru hole until flange is flush with sheet metal.

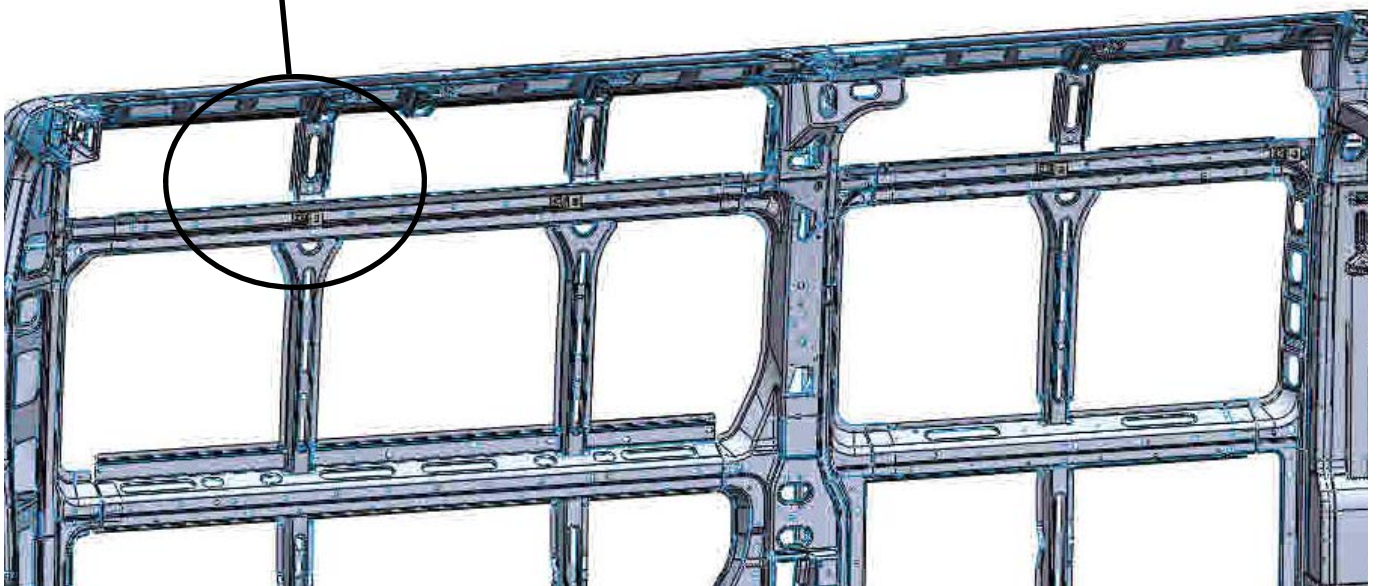
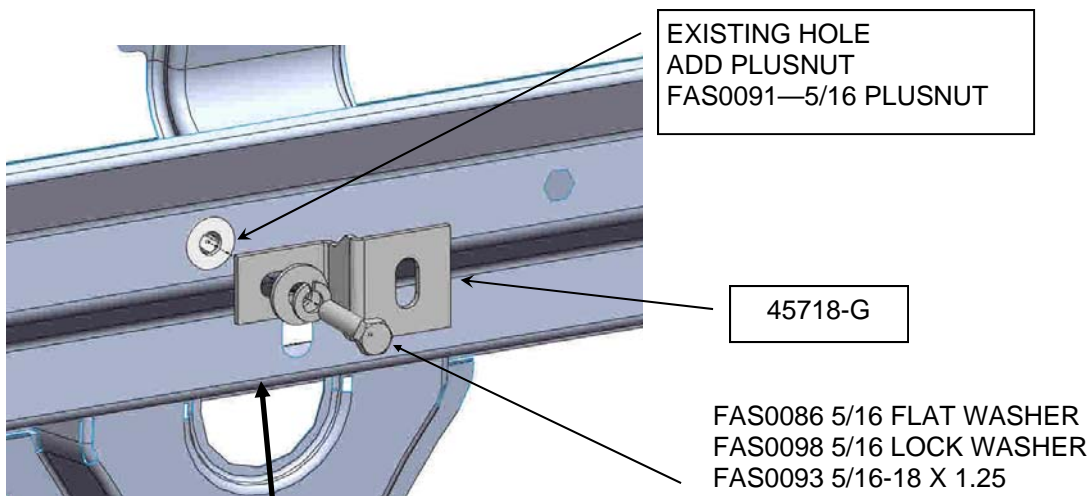
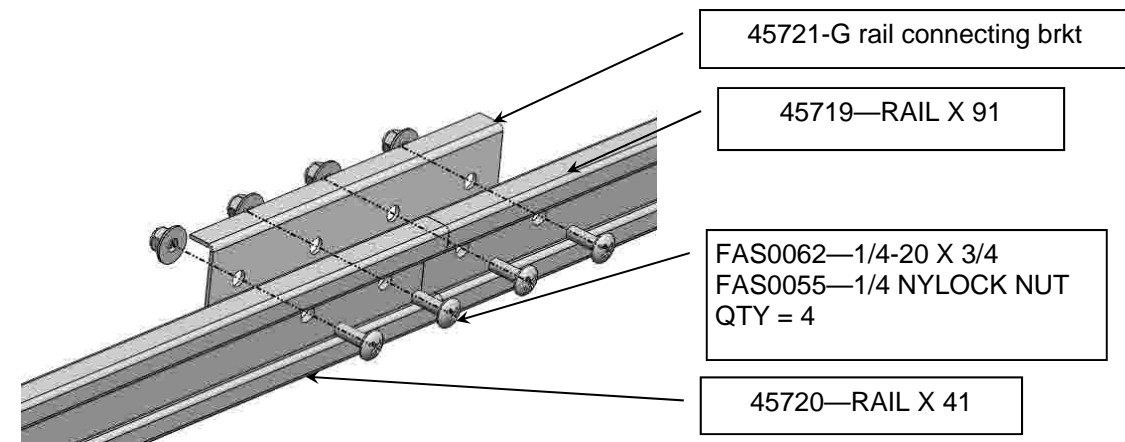
Using a 9/16" combination wrench of plusnut tool body and a second hand wrench, ratchet, or air tool, rotate the hex bolt head CW to draw plus nut flanges up (set the plusnut).

Assembly and Installation Fastener Identification Sheet (BAG45758)

ITEM NO.	PART NUMBER	DESCRIPTION	QTY
1	BAG0507-A	5" x 7" 3MIL AUTOBAG	1
2	FAS0091	Plusnut, 5/16	21
3	03927-2	Tall Floor Spacer	9
4	FAS0048	Screw, Button Hd Hex Soc, 5/16-18X 2, BLK OXIDE	11
5	FAS0083	Screw, Hex Hd, 5/16-18x1 25	10
6	FAS0085	Washer, Lock, Ext. Tooth, 5/16	23
7	FAS0086	Washer, Flat, 5/16, ZN	22
8	FAS0098	Washer, Lock, Split, 5/16, Zinc Plate	10
9	FAS0062	Screw, Truss Hd Ph, 1/4-20x0.75	14
10	FAS0055	Nut, Hex Flange, Nylock 1/4-20	14
11	FAS0165	Screw, Hex Hd, 5/16-18x 625	12



STEP 1A ASSEMBLE STREET SIDE UPPER RAILS & LOCATE FIRST HOLE

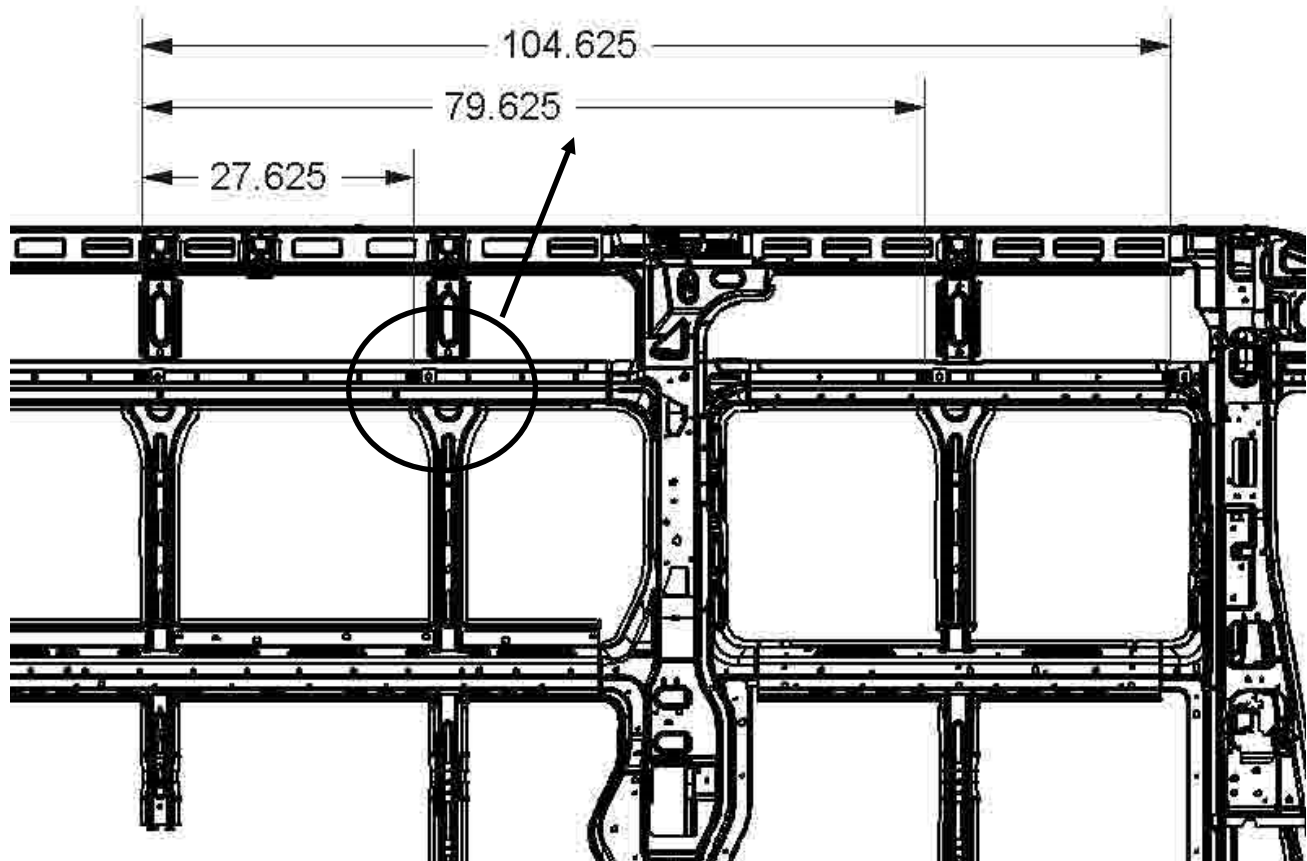
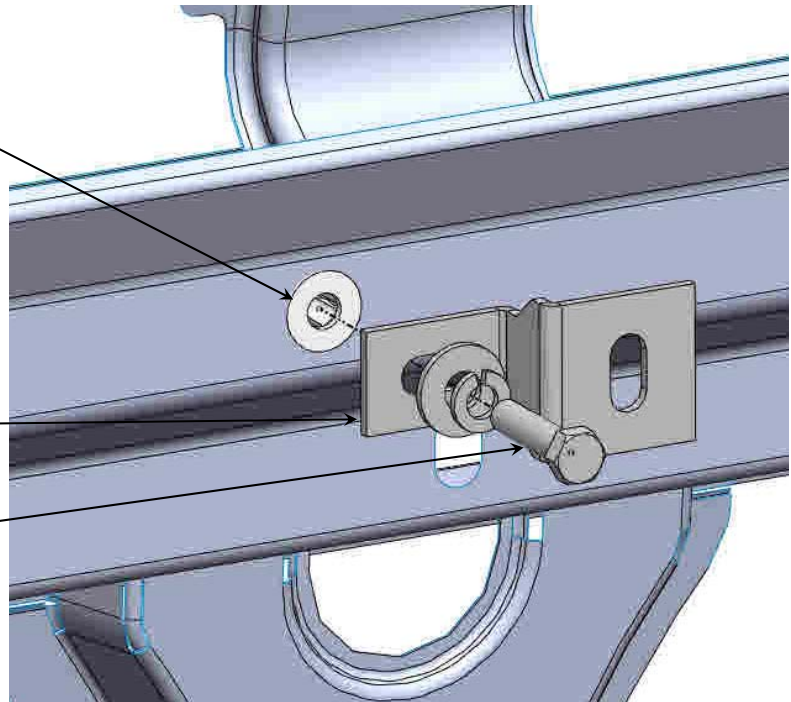


STEP 1B LOCATE ALL RAIL ADAPTER HOLES IN THE UPPER STREET RAIL

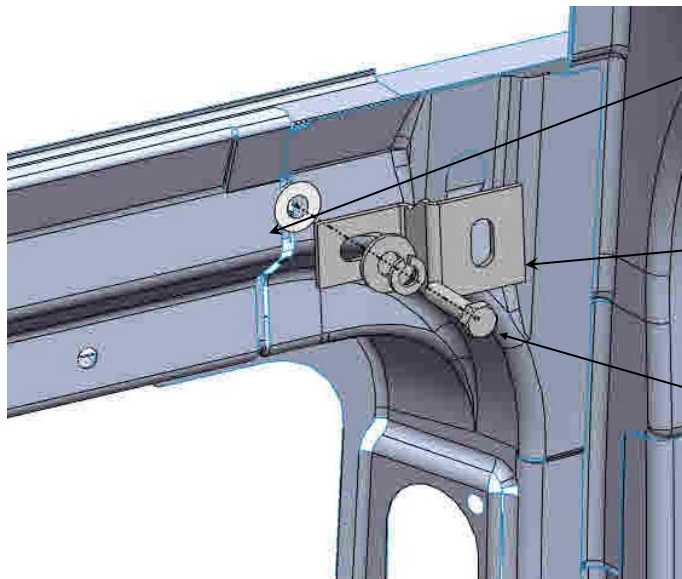
EXISTING HOLE
ADD PLUSNUT
FAS0091—5/16 PLUSNUT
27.625" FROM STEP 1A HOLE

45718-G

FAS0086 5/16 FLAT WASHER
FAS0098 5/16 LOCK WASHER
FAS0093 5/16-18 X 1.25



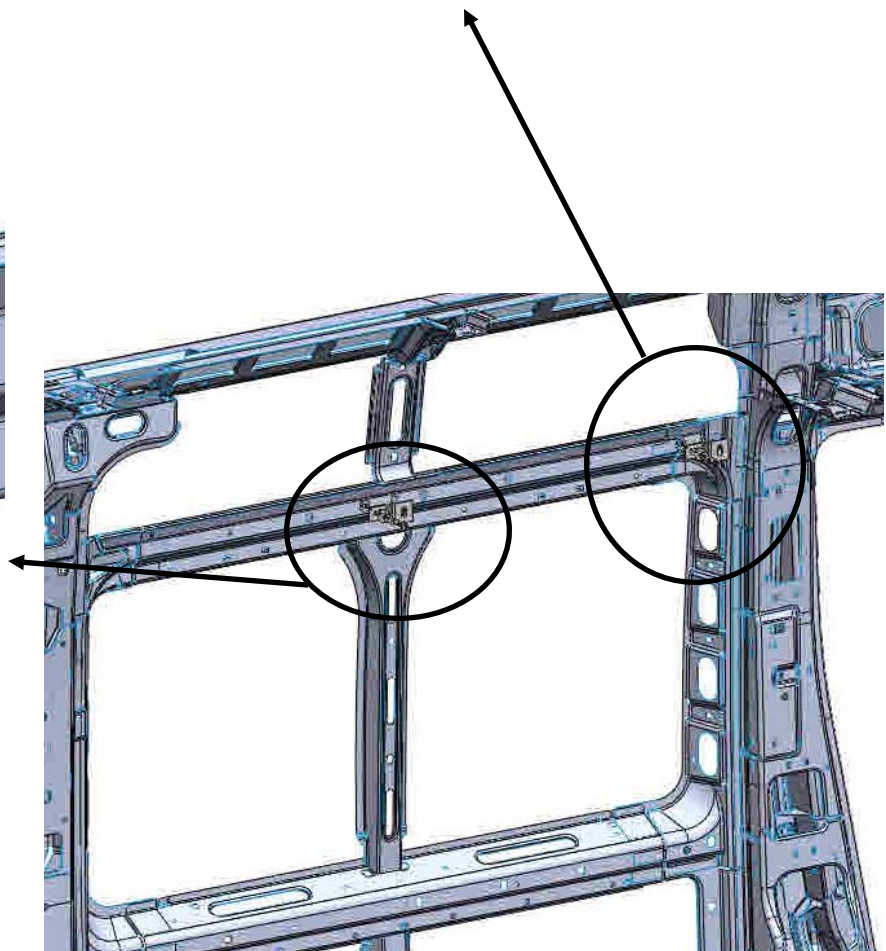
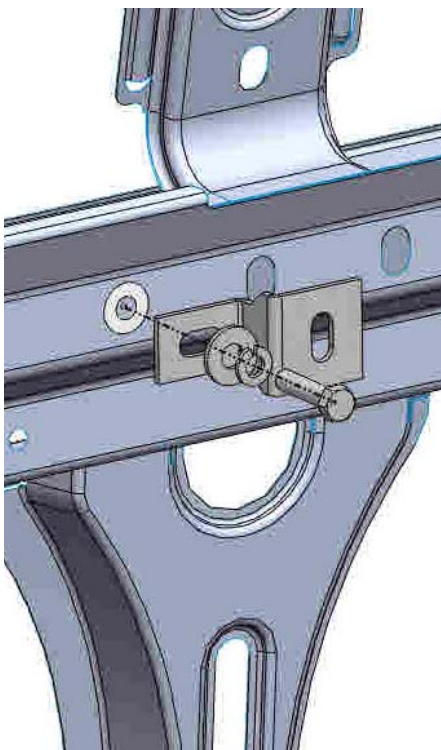
STEP 1C STREET SIDE UPPER RAIL FRONT HOLES



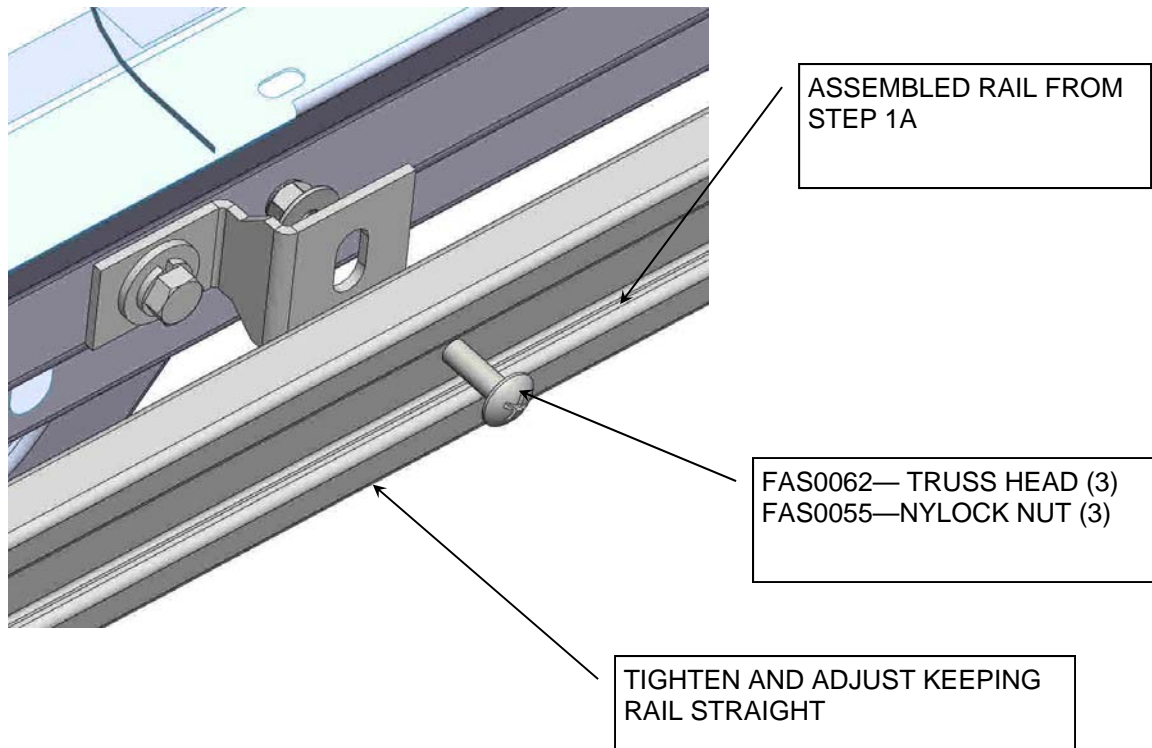
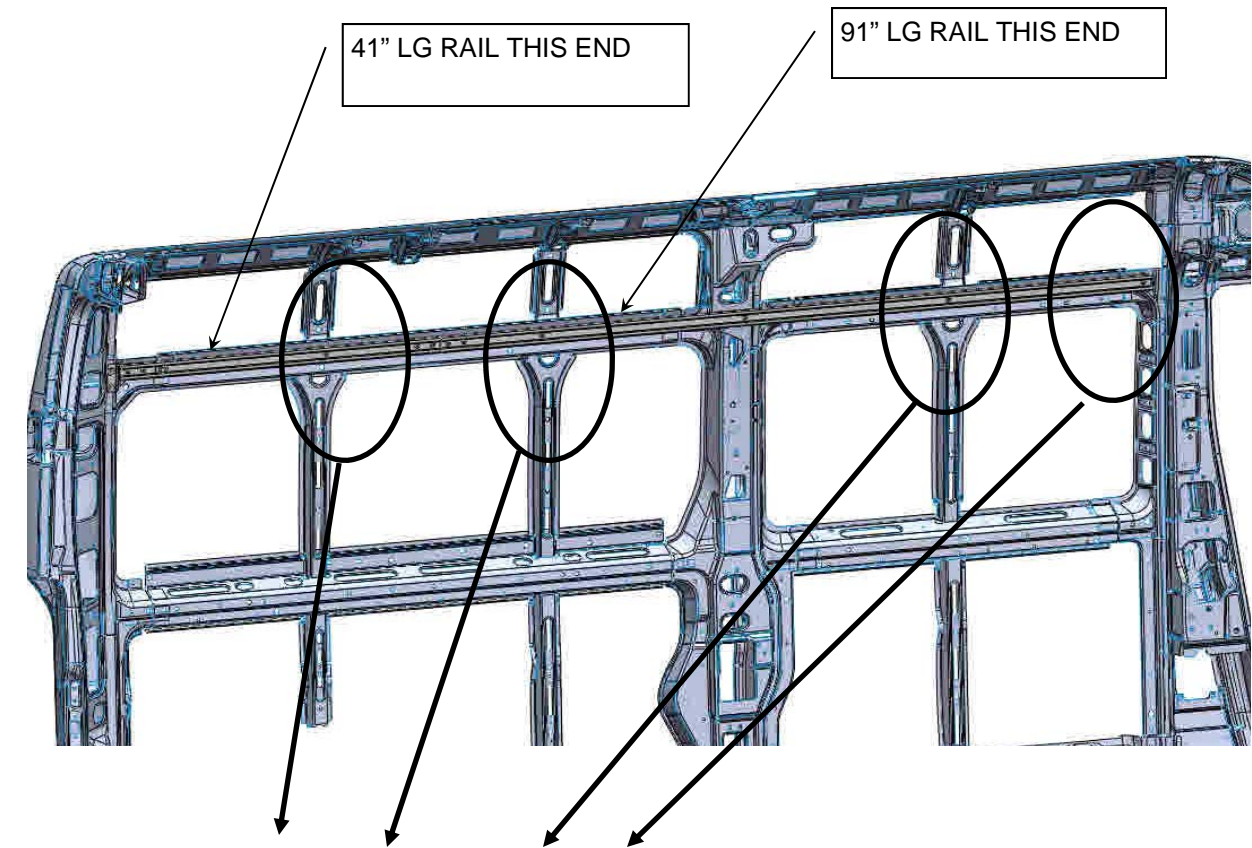
1/2" DIA WITH DRILL STOP
ADD PLUSNUT
FAS0091—5/16 PLUSNUT (2)

45718-G (2)

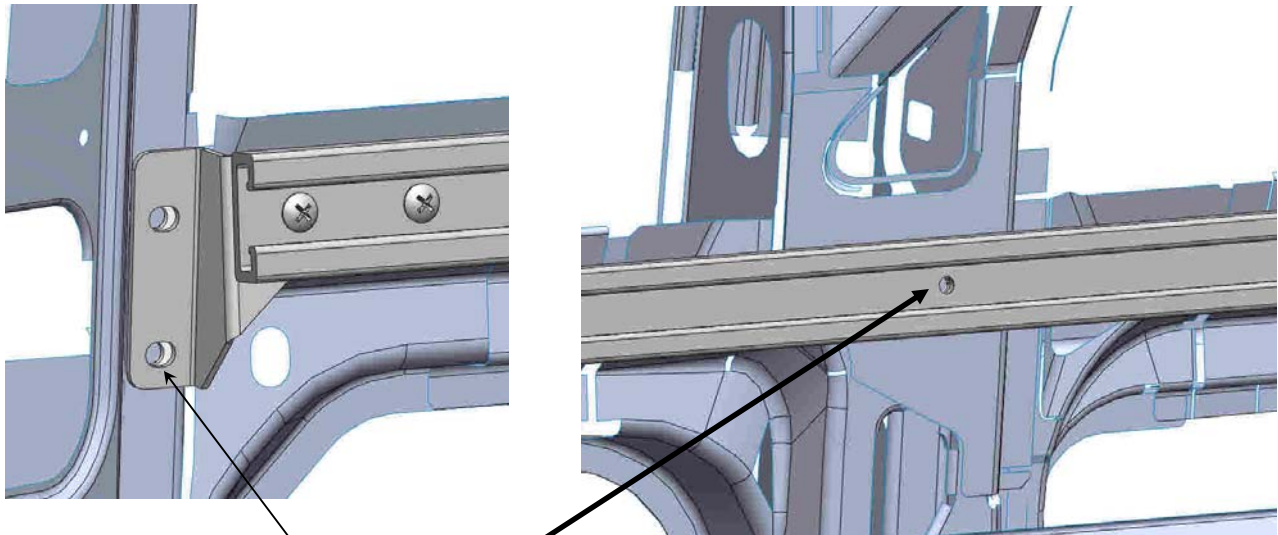
FAS0086 5/16 FLAT WASHER (2)
FAS0098 5/16 LOCK WASHER (2)
FAS0093 5/16-18 X 1.25 (2)



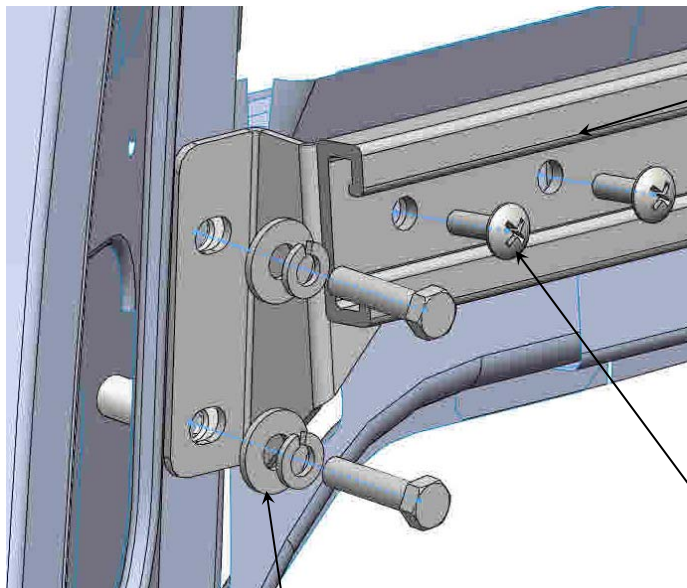
STEP 1D - ADD STREET SIDE UPPER RAILS TO THE RAIL ADAPTERS.



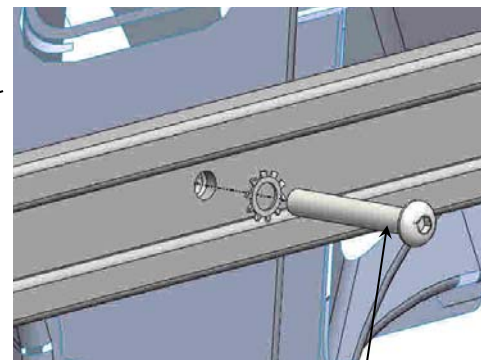
STEP 1E - ADD STREET SIDE D-PILLAR MTG PLATE



TRANSFER HOLE LOCATIONS
REMOVE RAIL
DRILL AND SET PLUSNUTS
FAS0091—5/16 PLUSNUT



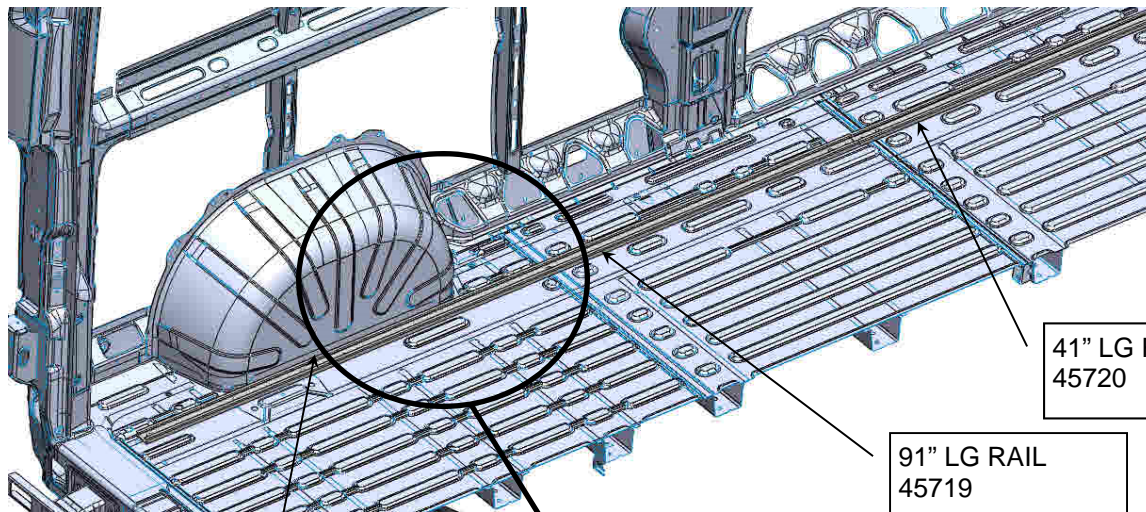
FAS0091—PLUSNUT
FAS0093— HEX HEAD (2)
FAS0098—LOCK WASHER (2)
FAS0086—FLAT WASHER (2)



FAS0091—PLUSNUT
FAS0048— BUTTON HD
FAS0085—STAR WASHER

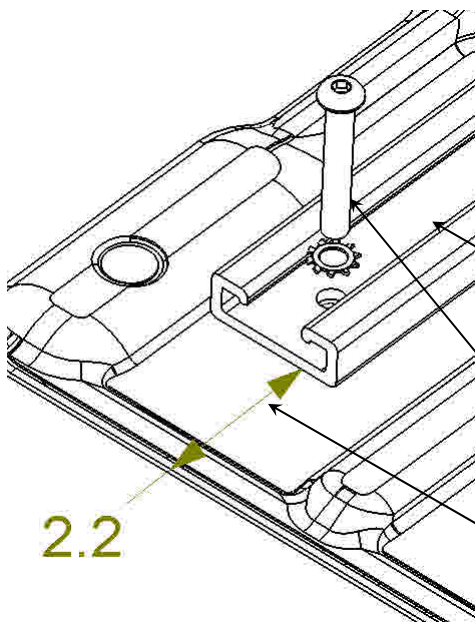
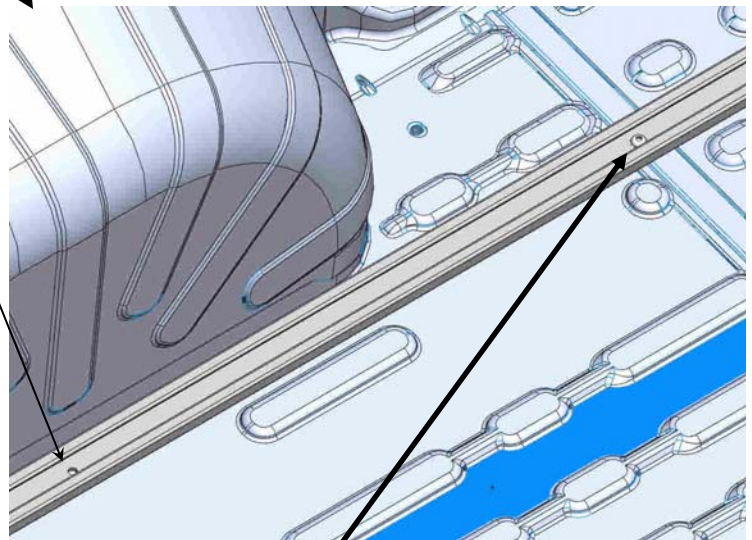
FAS0062— TRUSS HEAD (2)
FAS0055—NYLOCK NUT (2)

STEP 2A - ADD STREET SIDE FLOOR RAILS WITH OEM PARTITION GO TO STEP 2B FOR INSTRUCTIONS WITH ADRIAN PARTITION



UP AGAINST
WHEEL WELL

**CAUTION !!: DO NOT
USE THIS HOLE**

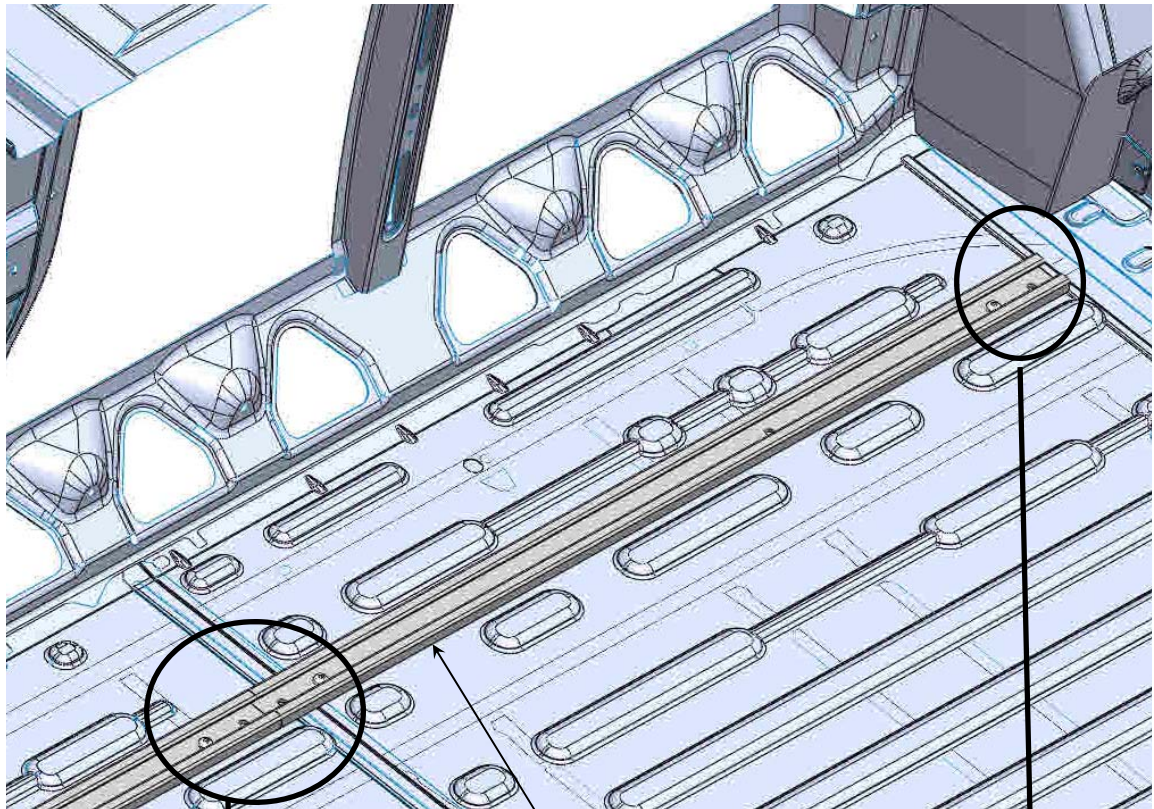


91" LG RAIL
45719

FAS0091—PLUSNUT (2)
FAS0048— BUTTON HD (2)
FAS0085—STAR WASHER (2)

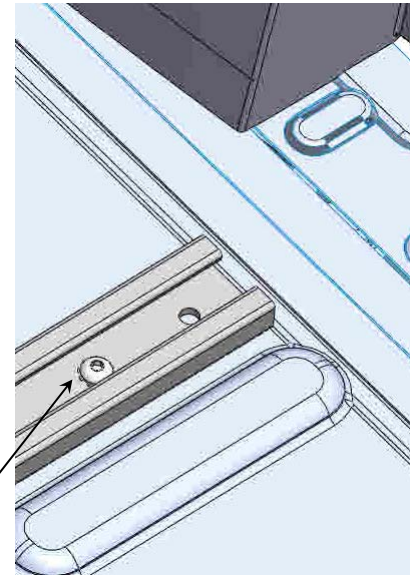
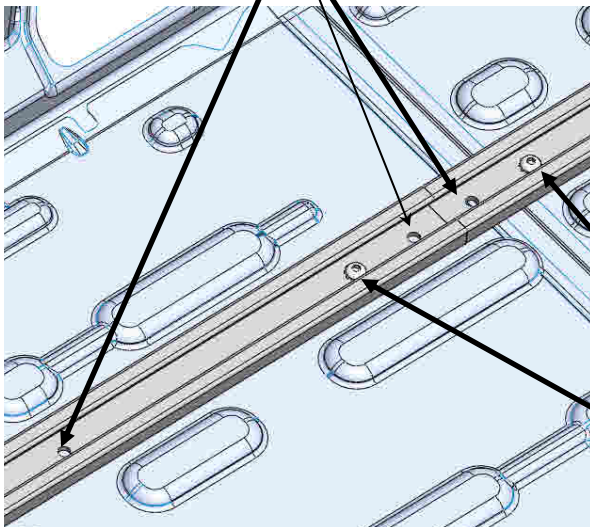
**WITH OEM PARTITION
APPROX 2 1/4" FROM SEAM
LINE UP WITH TOP RAIL**

STEP 2A - ADD STREET SIDE FRONT FLOOR RAIL WITH OEM PARTITION.



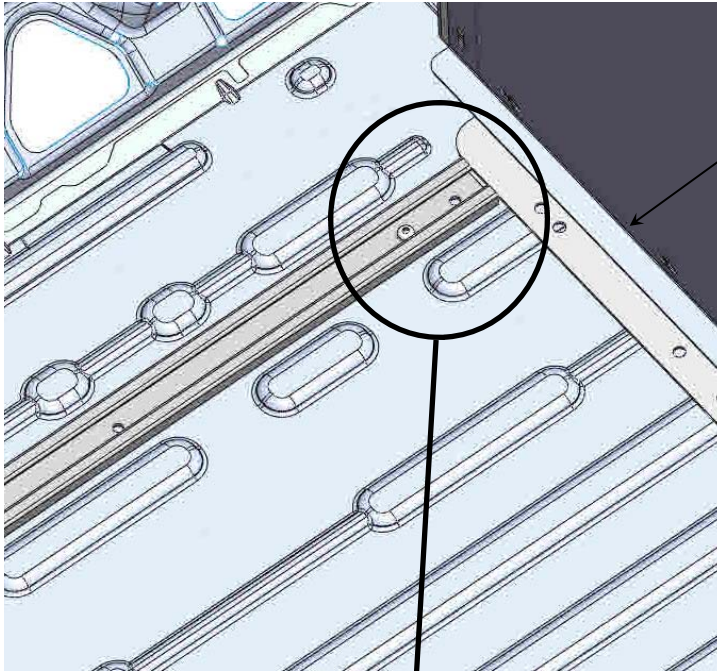
HOLES NOT USED

41" LG RAIL
45720

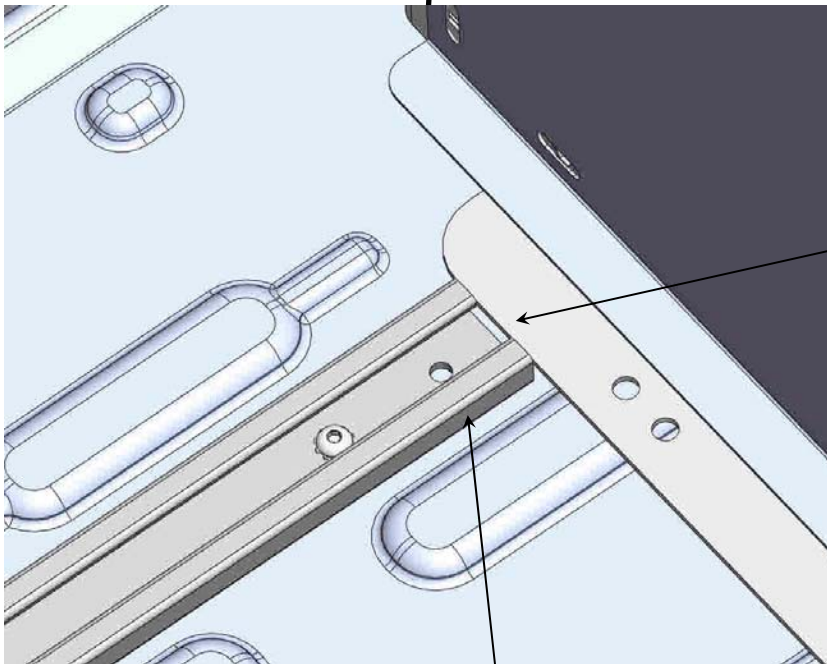


TRANSFER HOLE LOCATIONS
REMOVE RAIL
DRILL AND SET PLUSNUTS
FAS0091—5/16 PLUSNUT (3)
FAS0048—BUTTON HD (3)
FAS0085—STAR WASHER (3)

STEP 2B - ADD STREET SIDE FLOOR RAILS WITH ADRIAN PARTITION



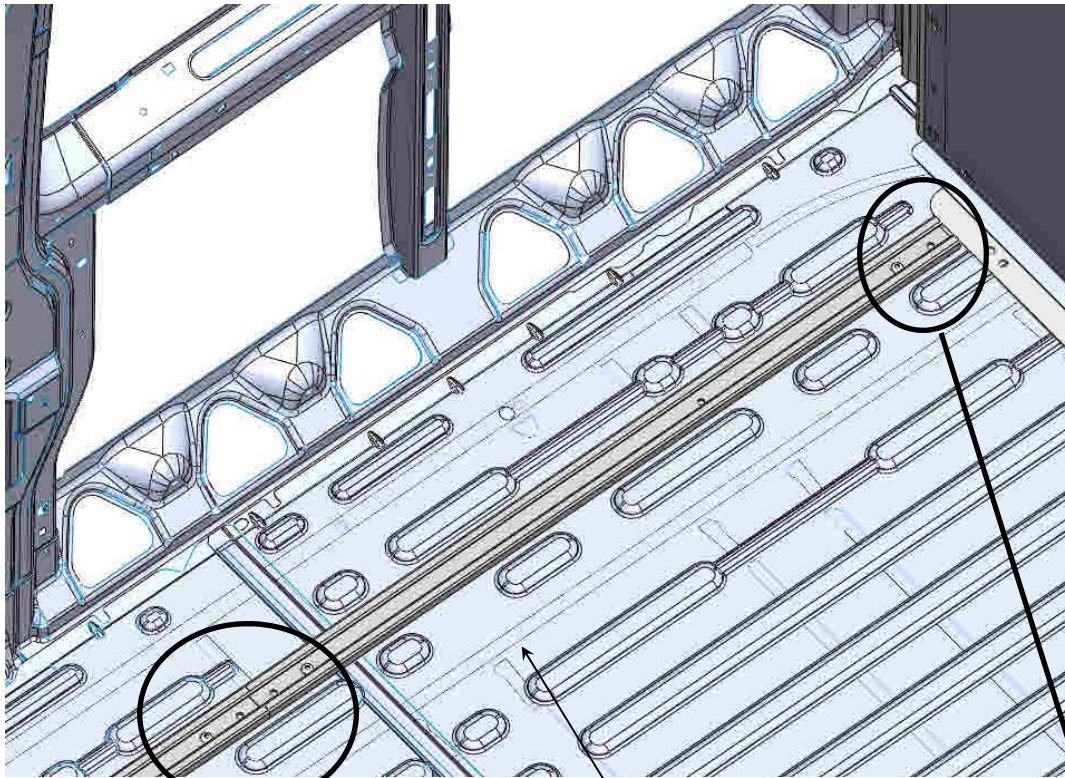
**INSTALLED
ADRIAN PARTITION
FOOTER RAIL.**



TOUCHING TO
APPROXIMATELY 1/4" AWAY
FROM FOOTER RAIL

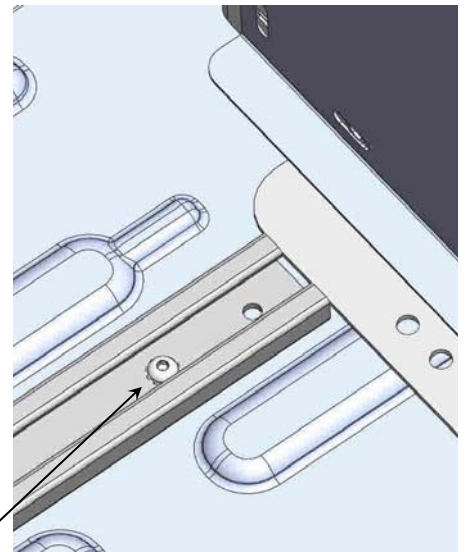
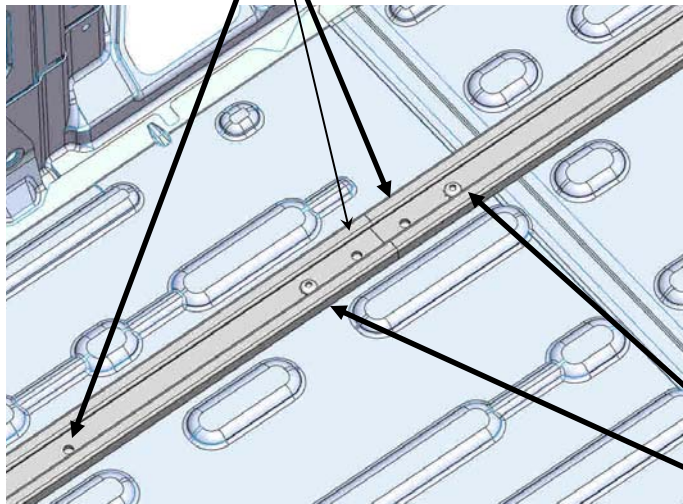
IF YOU HAVE THE PLUS THREE PARTITION.
1) REMOVE 3" FROM THIS END OF THE RAIL
2) DRILL A .344 HOLE 1" FROM THE CUT END
3) DRILL AND SET PLUSNUT.

STEP 2B - ADD STREET SIDE FRONT FLOOR RAIL WITH ADRIAN PARTITION.



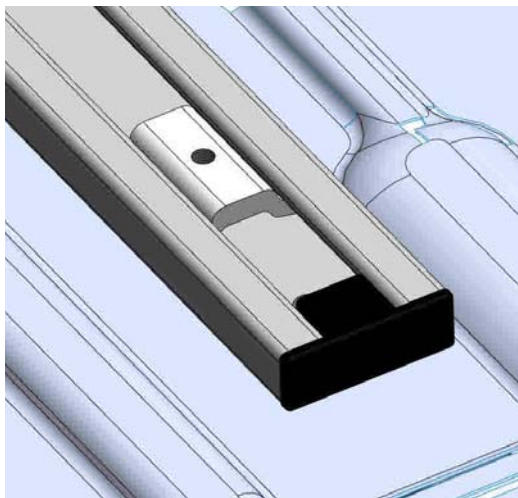
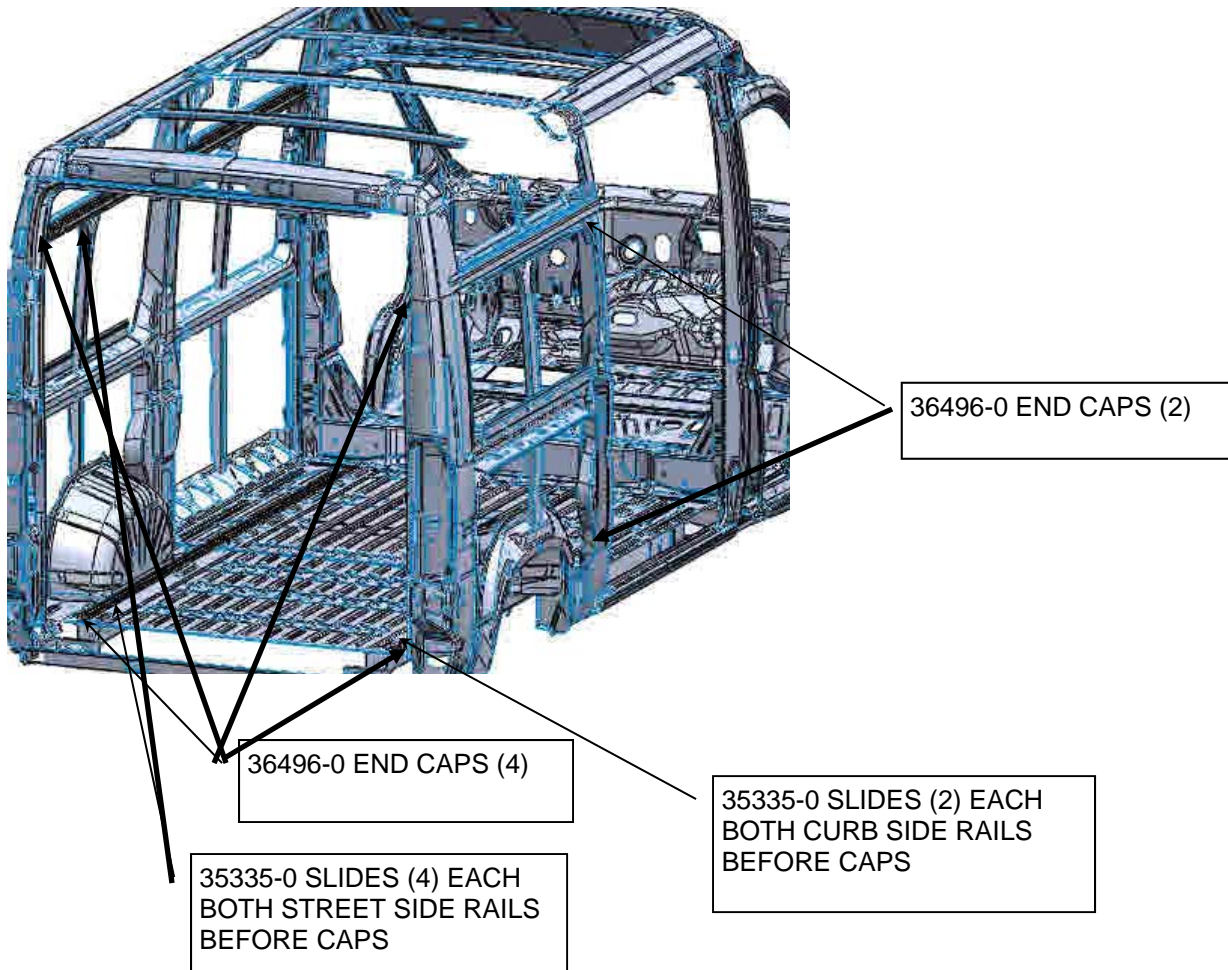
HOLES NOT USED

41" LG RAIL
45720



TRANSFER HOLE LOCATIONS
REMOVE RAIL
DRILL AND SET PLUSNUTS
FAS0091—5/16 PLUSNUT (3)
FAS0048—BUTTON HD (3)
FAS0085—STAR WASHER (3)

STEP 5 - ADD SLIDES AND END CAPS TO RAILS



YOUR INSTALLATION IS NOW COMPLETE



**DOUBLE CHECK ALL FASTENERS LOCATIONS TO BE SURE THAT ALL
FASTENERS ARE TIGHTENED TO SPECIFICATIONS.
YOUR INSTALLATION IS NOW COMPLETE!
STOW THIS COPY IN THE VEHICLE FOR FUTURE REFERENCES!**