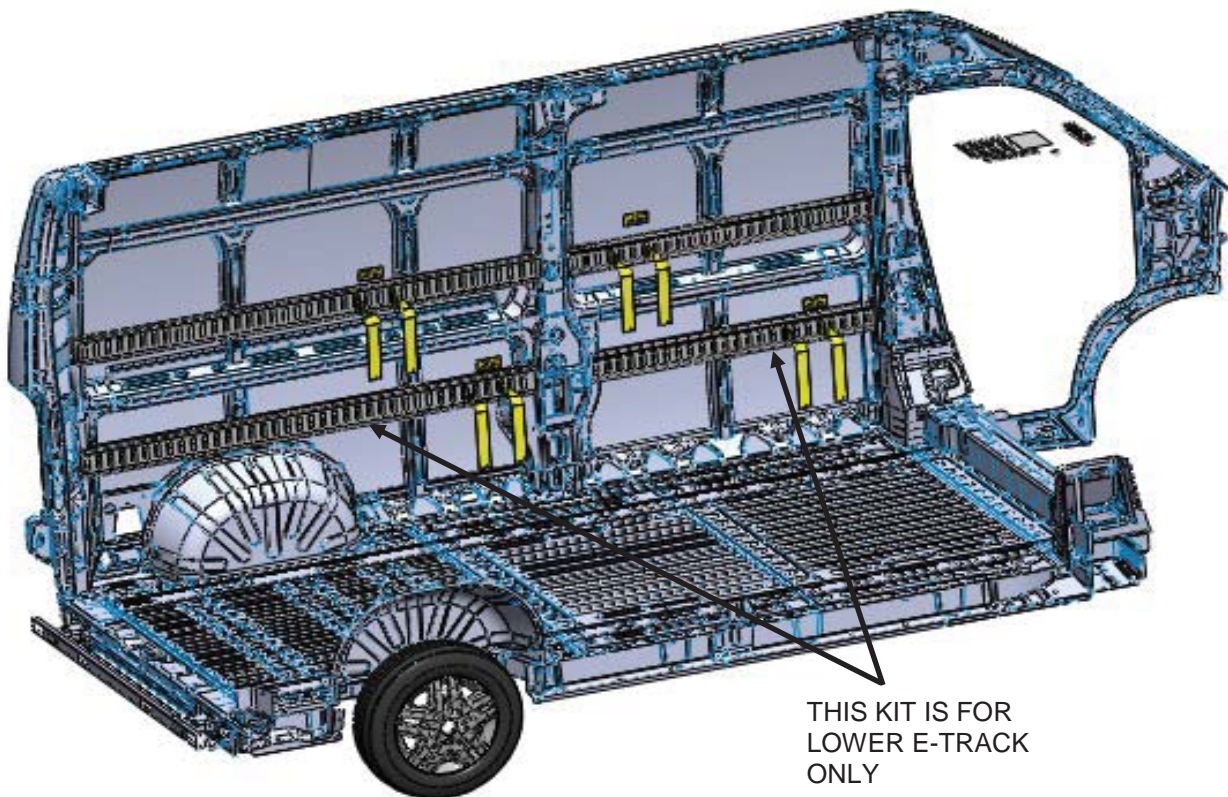


Introduction / Comments:

This street side (drivers) e-track kit is designed to fit the 2014 Promaster 159" High Roof.

Note:

It is advised that all fasteners used in this assembly and installation should be checked for tightness at the following intervals: @ 2-weeks and again @ 6-weeks of operation. This preventive maintenance step must be completed to ensure your Partition gives you long service life.



Lower E-Track Kit (Street Side) 2014 Promaster 159" High Roof vehicle ET159PMSS

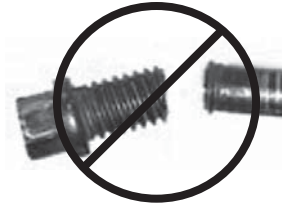
- PRECAUTIONS -



CAUTION



**THE USE OF AIR IMPACT TOOLS CAN
OVER-TORQUE FASTENERS AND
CAUSE FASTENER FAILURE!**



CAUTION



**ALL INSTALLATION HOLES SHOULD BE SEALED
WITH SILICON OR BUTYL SEALANT TO PREVENT
EXHAUST FUMES FROM ENTERING THE VEHICLE!**



DANGER



**INSPECT FOR FUEL TANK, FUEL LINES, BRAKE LINES, HIGH
VOLTAGE BATTERIES AND ELECTRICAL LINES PRIOR TO
DRILLING TO AVOID DAMAGING CRITICAL VEHICLE SYSTEMS
OR INJURY TO INSTALLER DURING INSTALLATION PROCESS!**



CAUTION



**TO AVOID DAMAGING THE VEHICLE ALWAYS
USE DRILL STOPS WHEN DRILLING ANY IN-
STALLATION HOLES!**



- IMPORTANT WARRANTY REQUIREMENTS -

1. SUBSTITUTING ADRIAN STEEL SPECIFIED FASTENERS FOR ASSEMBLY AND/OR INSTALLATION WILL VOID YOUR PRODUCT WARRANTY.
2. ALL HOLES DRILLED INTO VEHICLE SHOULD HAVE THE RAW METAL EDGES SEALED WITH A SELF-ETCHING PRIMER TO RESIST CORROSION AND POTENTIAL FASTENER POINT FAILURE.
3. ALL FASTENERS USED IN THE INSTALLATION OF THIS PRODUCT SHOULD BE TIGHTENED TO THE TORQUE(S) SPECIFIED IN THESE INSTRUCTIONS.
4. THESE INSTRUCTIONS SHOULD BE KEPT WITH THE VEHICLE.

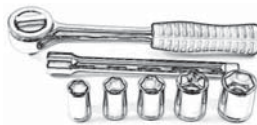
THE BASIC TOOLS NEEDED FOR MOST INSTALLATIONS



DRILL



DRILL BIT WITH
STOP



RATCHET, SOCKETS
AND/OR WRENCHES



SCREWDRIVERS



MEASURING TAPE

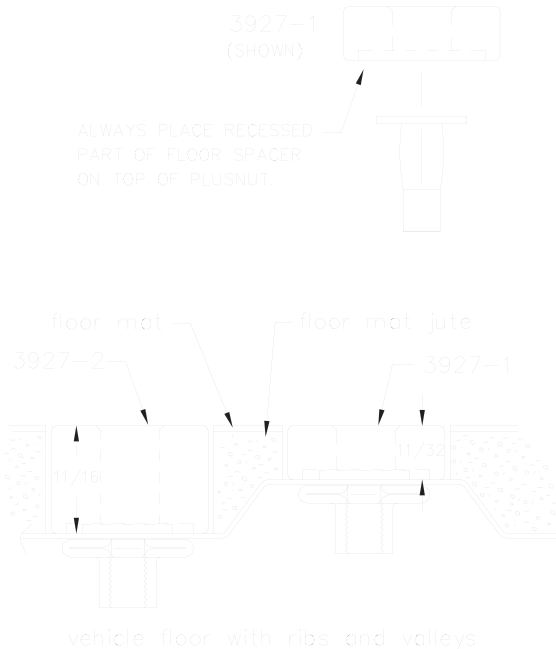
ADDITIONAL TOOLS MAY BE NEEDED FOR THIS INSTALLATION AND THEY WILL BE IDENTIFIED IN THE STEPS THAT FOLLOW.

If your vehicle contains carpet or a rubber floor mat you will need to prepare the mounting location. Position the product to be installed into the vehicle and once you are satisfied with the mounting locations, mark the mounting locations. Using a 1-3/16" diameter carpet cutter (P/N: 31183-0). Select the appropriate floor spacers as shown in the illustration. Set those aside for use later into the installation process.

Using the correct drill bit size for the selected plusnut, drill the mounting holes in the vehicle sheet metal to prepare for installing the plusnuts.

If you are thru-bolting at any of the locations simply drill a hole that is 1/16" larger than the bolt size(s) for those locations.

Once you have drilled the holes into the vehicle, the raw metal edges should be sealed using a self-etching primer to resist corrosion and potential fastener point failure.



A PLUSNUT (RIVNUT) SETTING TOOL IS REQUIRED FOR PLUSNUT (RIVNUT) INSTALLATION AND IS SUPPLIED WITH THIS KIT. OR USE AN AIR POWERED PLUSNUT SETTING GUN.

1/4-20UNC Plusnut (FAS0052) Use 3/8" dia. drill w/stop

FAS0080 SCREW, HXHD, 1/4-20UNCx2.00", G8

FAS0067 WASHER, FLAT, 1/4"ID

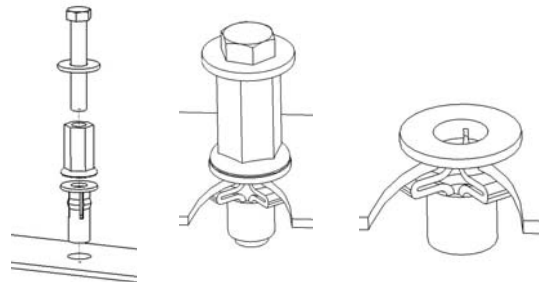
22200-0 PLUSNUT TOOL

5/16-18UNC Plusnut (FAS0091) Use 1/2" dia. drill w/stop

FAS0095 SCREW, HXHD, 5/16-18UNCx2.00", G8

FAS0086 WASHER, FLAT, 5/16"ID

22200-0 PLUSNUT TOOL

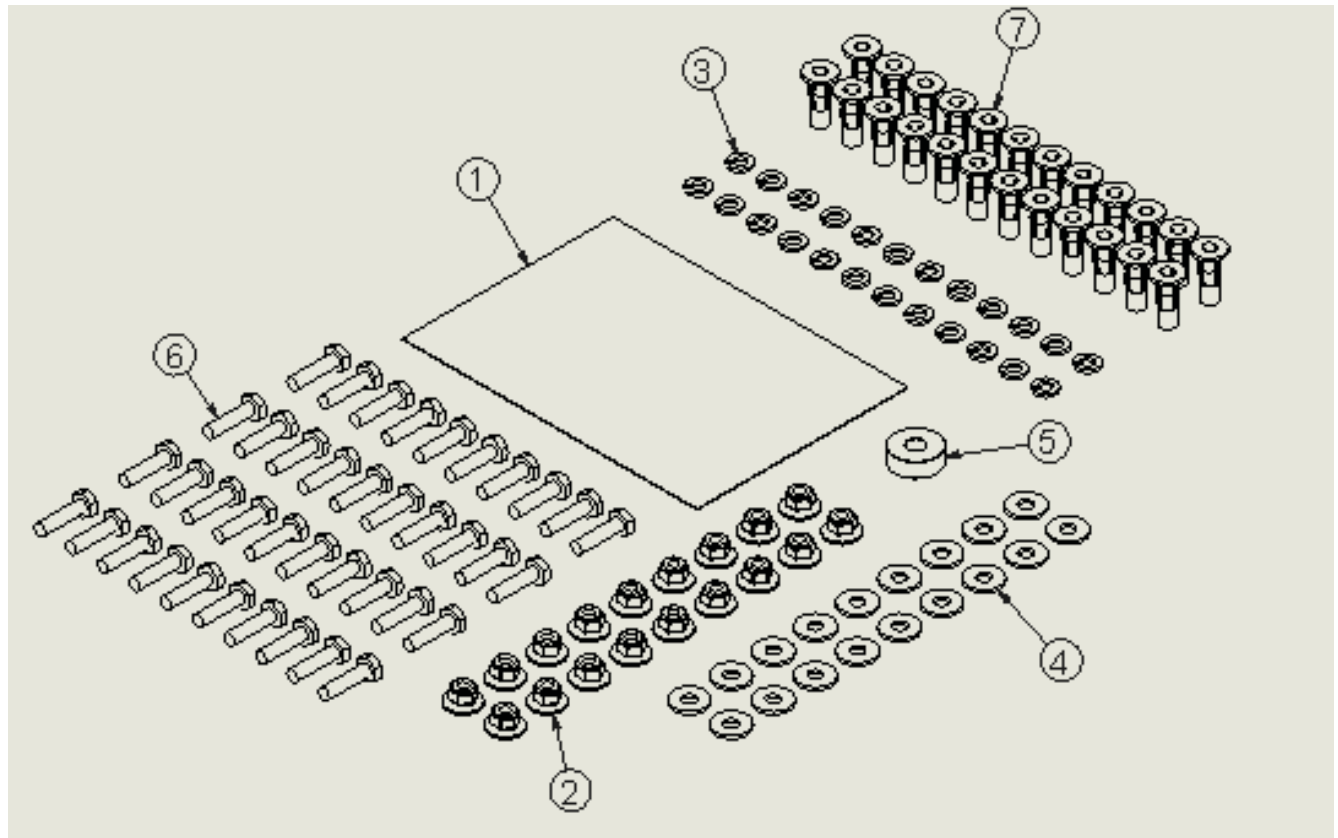


Place barrel of the plusnut body in sheet metal thru hole until flange is flush with sheet metal.

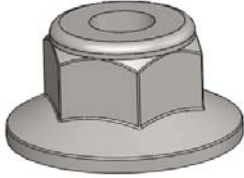
Using a 9/16" combination wrench of plusnut tool body and a second hand wrench, ratchet, or air tool, rotate the hex bolt head CW to draw plus nut flanges up (set the plusnut).

Installation and/or Assembly Fasteners

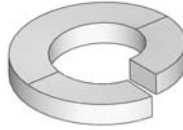
ITEM NO.	PART NUMBER	DESCRIPTION	BAG45597/QTY.
1	BAG0507-A	5" x 7" 3MIL AUTOBAG	1
2	FAS0055	Nut, Hex Flange, Nylock 1/4-20	18
3	FAS0060	Washer, Lock, Split, 1/4	24
4	FAS0067	Washer, Flat, 1/4	18
5	03927-1	Floor Spacer Short	1
6	FAS0078	Screw, Hex Hd, 1/4-20x1.00 Zn Plate, Grade 8	40
7	FAS0052	Plusnut, 1/4	24



Individual Fasten Identification Sheet



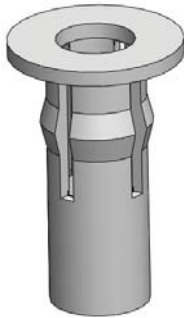
FAS0055
Nut, HxFIng,
Nylon Lock,
1/4-20UNC



FAS0060
Washer, SplitLock,
1/4" ID



FAS0067
Washer, Flat, 1/4"ID
5/16 ID x 0.734" OD
x .065



FAS0052
Plusnut, PreBulbed,
5/16-18UNC

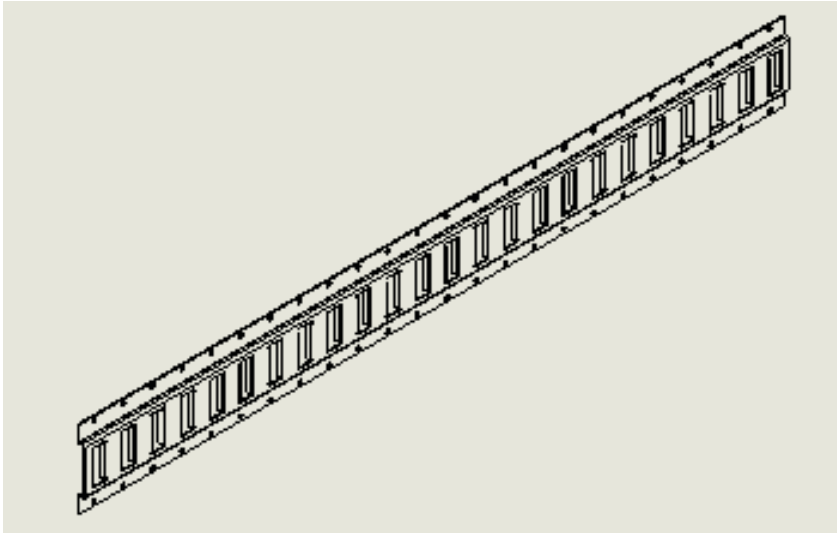


03927-1
Spacer, Floor,
11/32"



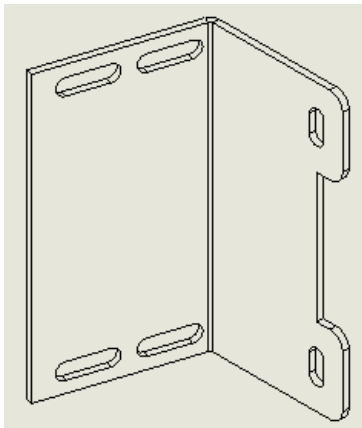
FAS0078
Screw, Hx Hd,
1/4-20UNC x 1"

Installation and/or Assembly Hardware



45030-G
E-TRACK, CUT TO 48"
Qty = 1

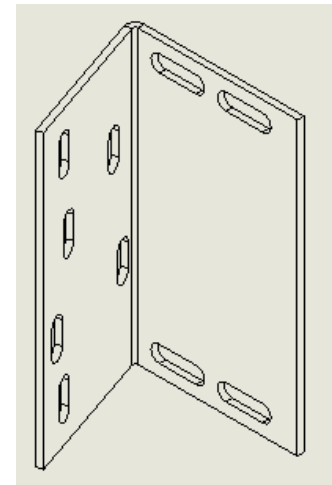
45035-G
E-TRACK, CUT TO 77"
Qty = 1



45594-G
BRACKET, CENTER SUPPORT,
E-TRACK, PROMASTER
Qty = 3



23916-0
WARNING LABEL, E-TRACK
Qty = 2



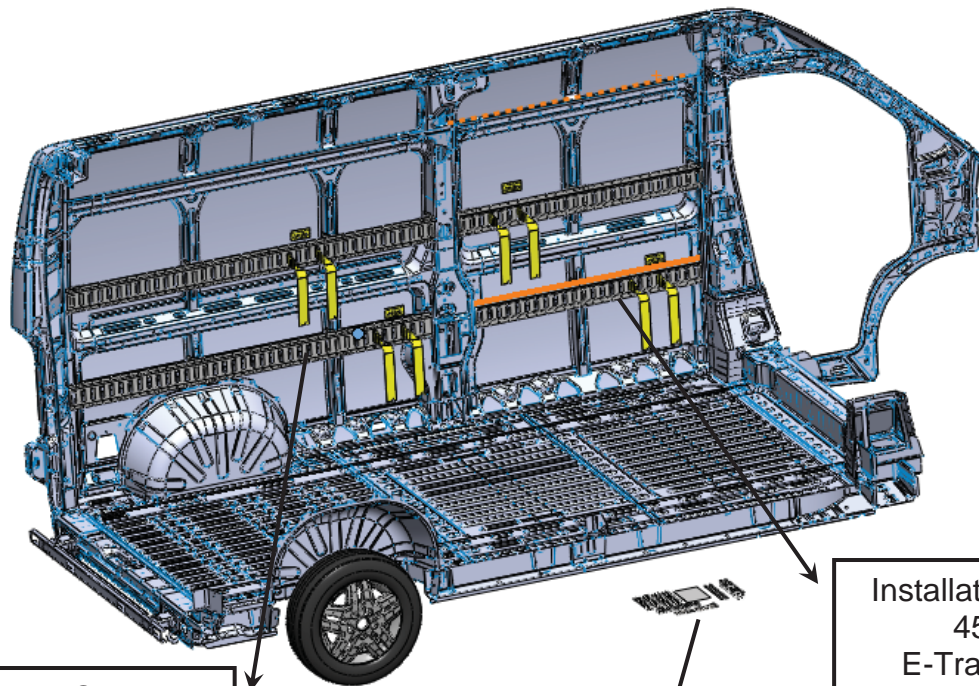
45593-G
BRACKET, END SUPPORT,
E-TRACK, PROMASTER
Qty = 2



23896-0
E-TRACK, STRAP, 12"
W/CAM BUCKLE
Qty = 2

Step 01 " Introduction Statement "

Installation of ET159PMSS will involve attaching four separate track sections in suggested order listed below, but can be rearranged at any time. During installation please make use of the information in the beginning section of these instructions describing plusnut installation and all associated caution/warning notes.

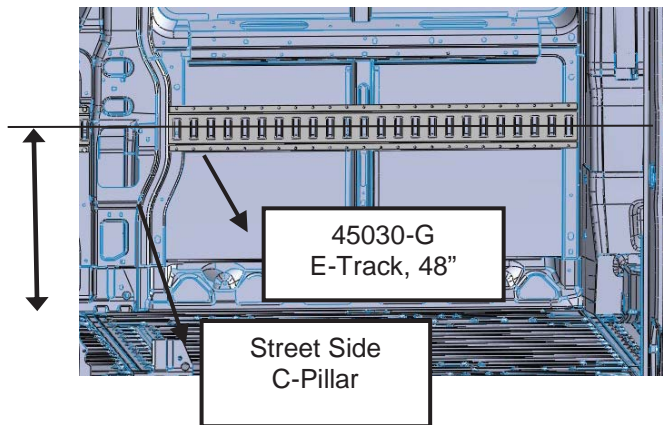


Installation Order #3
45035-G
E-Track Section
77" lg
Step 4 pp 14-15

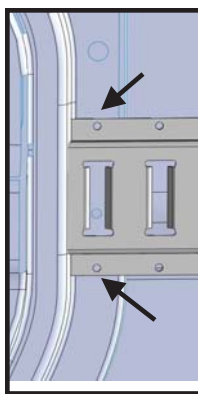
Installation Fas Bag
BAG45597

Installation Order #1
45030-G
E-Track Section
48" lg
Step 2 pp 8-9

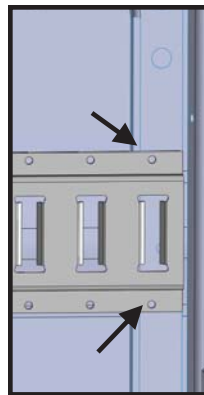
Step 02 "Location & Installation of the Front Lower E-Track Section"



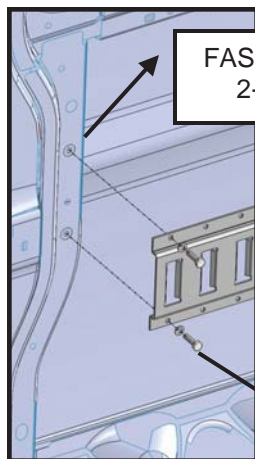
Position e-track section (45030-G) between the street side "B-Pillar" and "C-Pillar" as shown at left. Centerline of the e-track to be 21 inches above the vehicle floor. Check both ends centerline dimensions prior to marking the four mounting holes marks in the center left and right detail views. Use permanent marker pen. Once all four holes have been marked set e-track section aside.



Mark/Drill
4-pl



Install four 1/4-20UNC plusnuts (FAS0052) in marked holes, use a 3/8" diameter drill bit with a stop collar when drilling plusnut holes. See front of this instruction for proper plusnut installation.

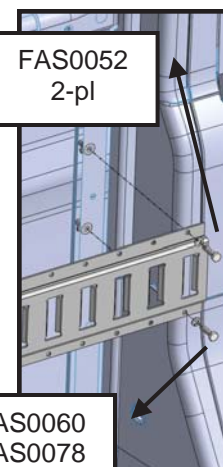


Once all four plusnuts have been installed, reposition the e-track section and secure in place with four of the following fasteners.

Note

Fasteners to be hand tight only.

FAS0060
FAS0078
2-pl



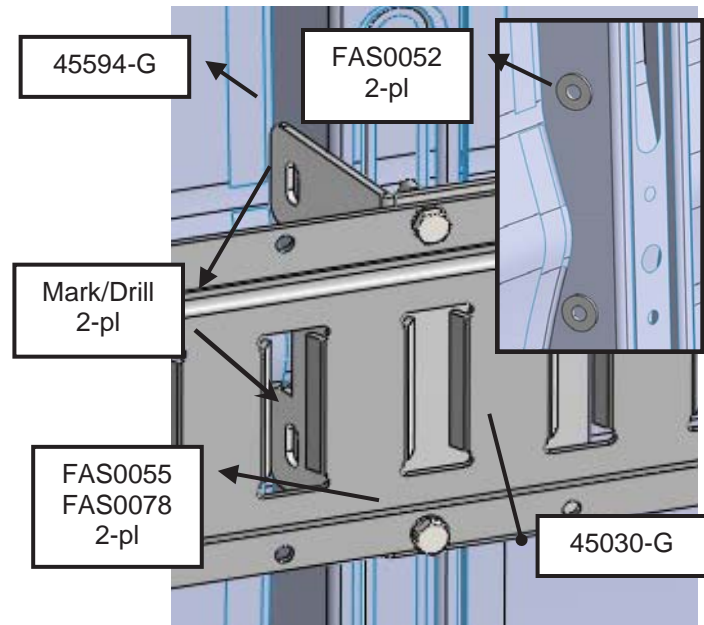
Step 02 "Location & Installation of the Frnt Lwr E-Trk Section, continued"

Position the Center E-Track Support Bracket (45594-G) as shown in figure at right. Secure bracket to e-track section with two each of the fasteners listed.

Note

Fasteners to be hand tight only

Mark the center bracket plusnut locations using a permanent marker pen. Once both holes have been marked remove fasteners at each end of the e-track section and set aside at this time.

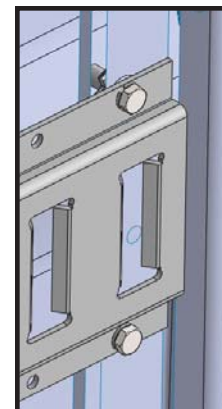
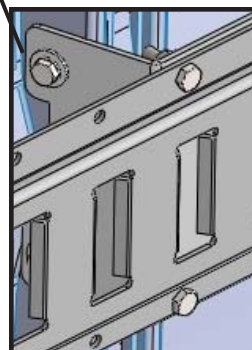
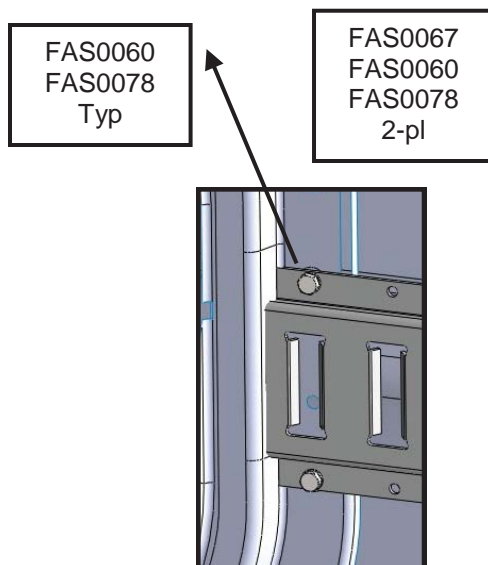
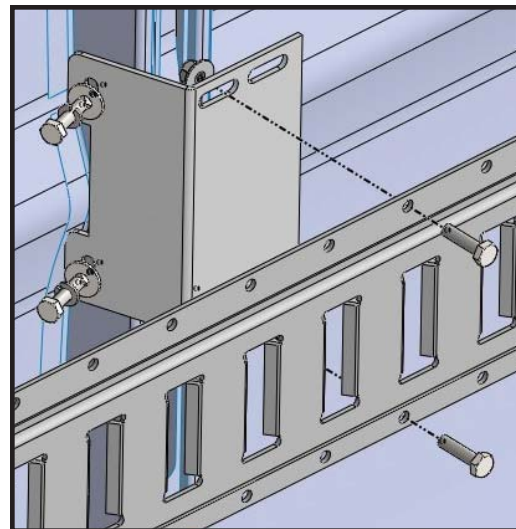


Install two 1/4-20UNC plusnuts (FAS0052) in marked holes, use a 3/8" diameter drill bit with a stop collar when drilling plusnut holes. See front of this instruction proper installation.

Once both plusnuts have been installed, reposition the e-track section and secure both ends to the "B" and "C" pillars. Next secure the center support bracket in place with two each of the listed fasteners.

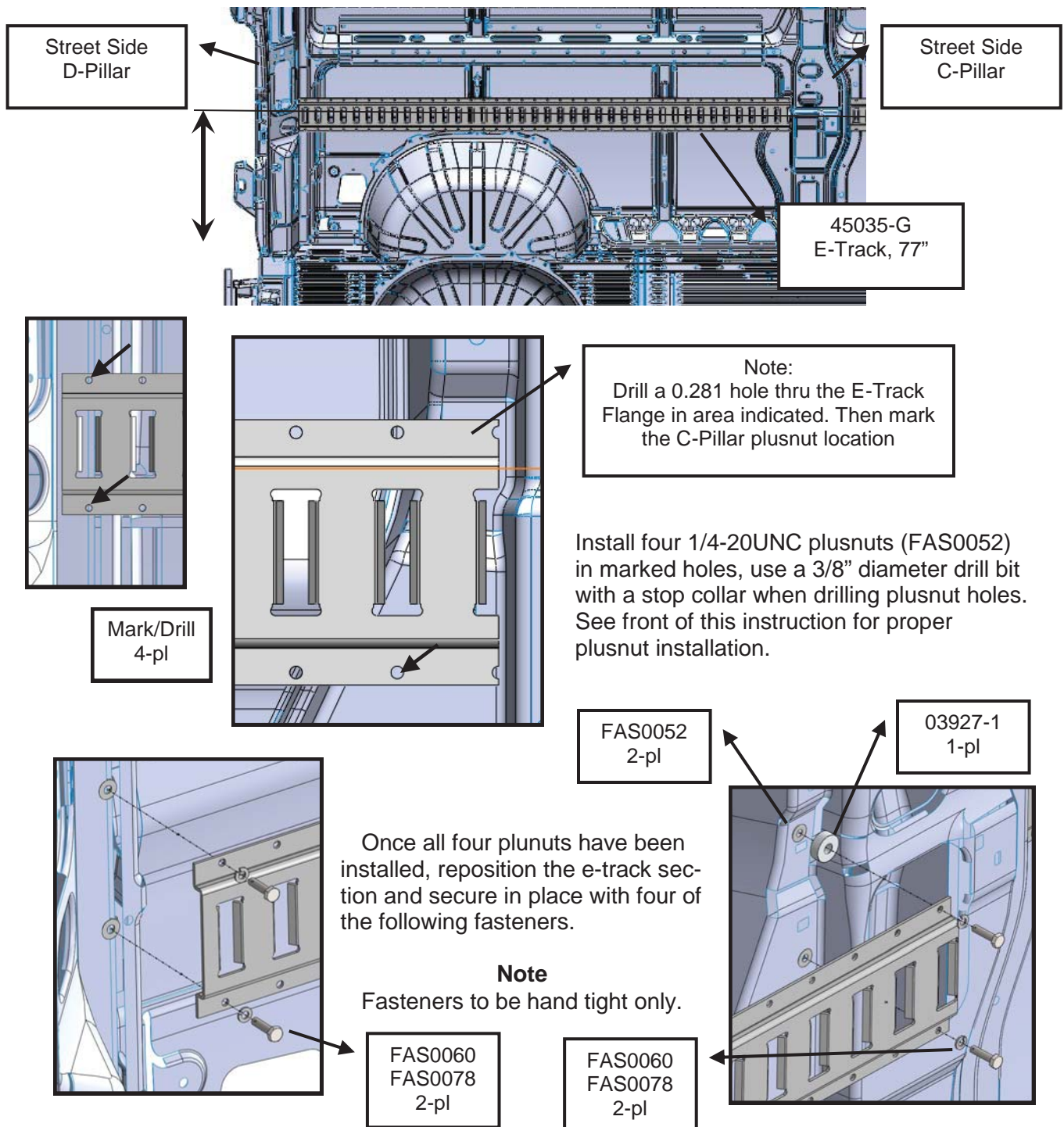
Note

Tighten all fasteners, proceed to next step.

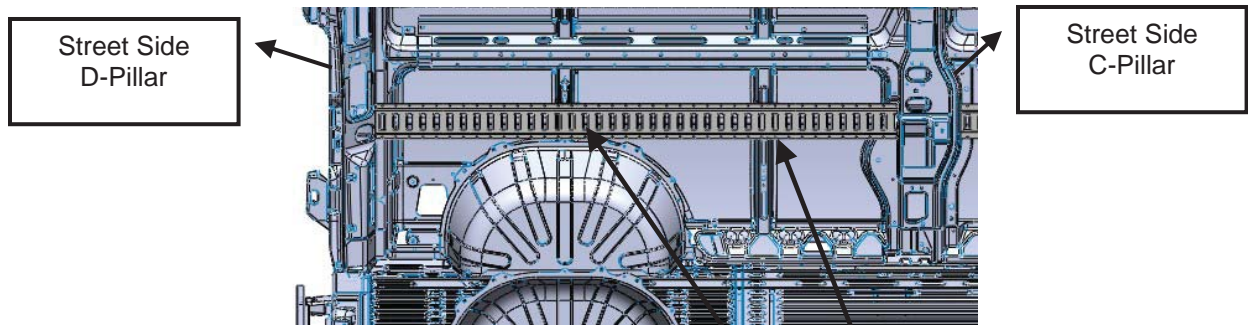


Step 04 "Location & Installation of the Lower Rear E-Track Section and Brackets"

Position e-track section (45035-G) between the street side "C-Pillar" and "D-Pillar" as shown at below. Centerline of the e-track to be 21 inches above the vehicle floor. Check both ends centerline dimensions prior to marking the four mounting holes marks in left and right details views shown below. Use permanent marker pen. Once all four holes have been marked set e-track section aside. **Please note orientation of e-track section (45033-G) as shown in middle two views.** **Proper orientation ensures proper e-track to bracket mounting hole alignments.**



Step 04 "Location & Installation of the Lwr Rr E-Trck Sand Brkts, continued"

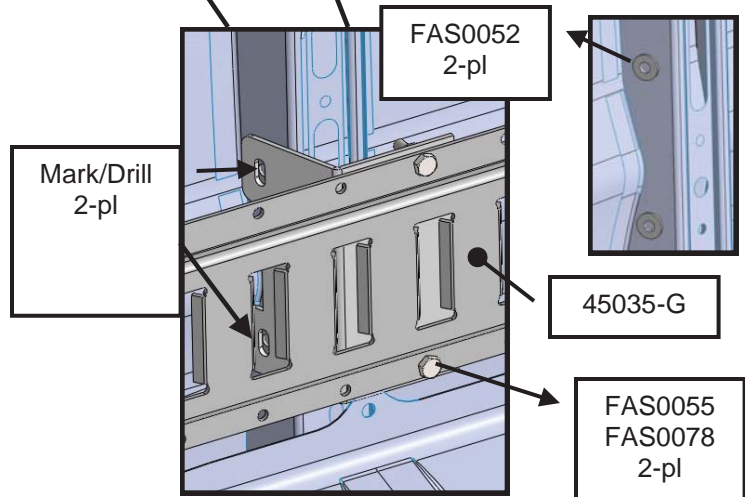


Position two Center E-Track Support Bracket (45594-G) as shown in figure at right. Secure bracket to e-track section with two each of the fasteners listed.

Note

Fasteners to be hand tight only

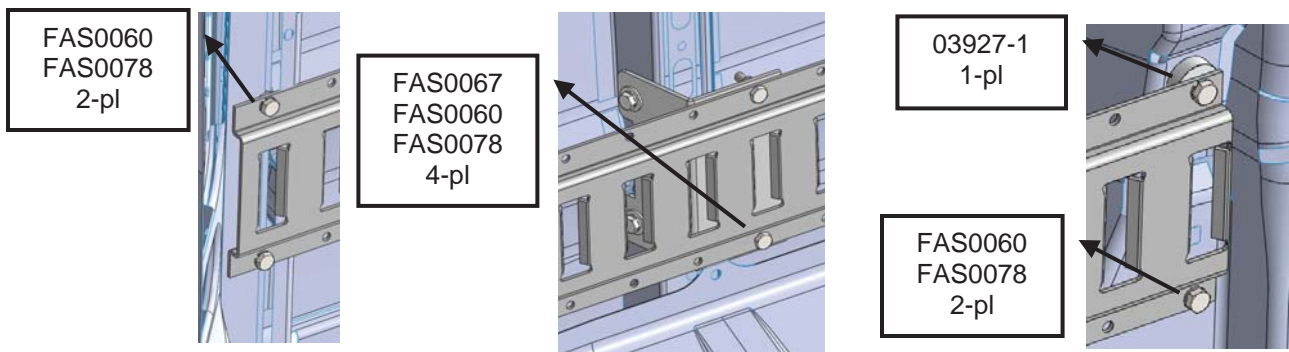
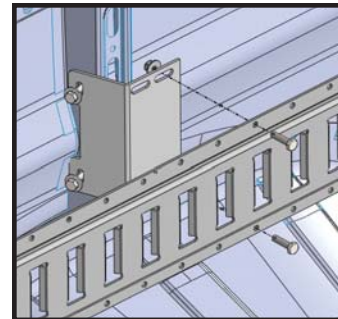
Mark the center bracket plusnut locations using a permanent marker pen. Once both holes have been marked remove fasteners at each end of the e-track section and set aside at this time.



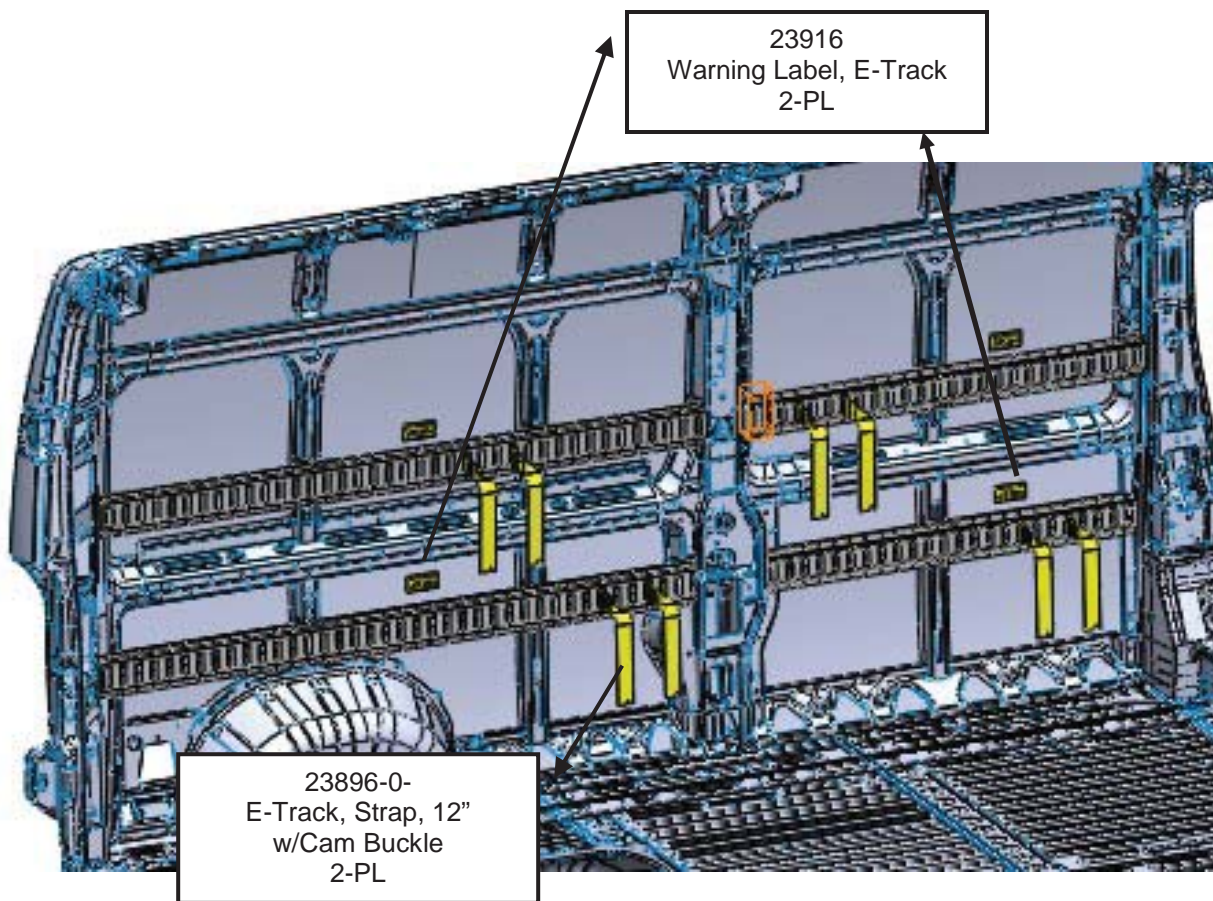
Install two 1/4-20UNC plusnuts (FAS0052) in marked holes, use a 3/8" diameter drill bit with a stop collar when drilling plusnut holes. See front of this instruction proper installation.

Once all four plusnuts have been installed, reposition the e-track section and secure both ends to the "B" and "C" pillars. Next secure the center support bracket in place with two each of the listed fasteners.

Note



Step 06 "Apply warning labels and straps"



PURCHASED COMPONENT KEY FEATURES	
DESCRIPTION OF REQUIREMENTS	
DIMENSIONAL REQUIREMENTS (AS SHOWN ON DRAWING)	
N/A	
LOAD/RATING REQUIREMENT	
N/A	
MATERIAL REQUIREMENT	
N/A	
PACKAGING REQUIREMENT	
N/A	
OTHER REQUIREMENTS	
<ul style="list-style-type: none">2" x 12' STRONG POLYESTER WEBBING WITH 48" FIXED ENDDESIGNED TO SECURE CARGO UP TO 833 LBS.2" CAM BUCKLE WITH SPRING-ACTUATED E-FITTINGS ON BOTH ENDS	



THIS DRAWING IS THE PROPERTY OF ADRIAN STEEL COMPANY AND IS NOT TO BE USED IN ANY MANNER DETRIMENTAL TO THE INTERESTS OF ADRIAN STEEL COMPANY		PRINTED DOCUMENT IS UNCONTROLLED		Sheet 1 of 1	
TOLERANCES & INSPECTION		PART / PRODUCT IDENTIFICATION			
UNLESS OTHERWISE SPECIFIED ALL BEND ANGLES ARE 90 DEGREES ALL DIMENSIONS ARE IN INCHES. REFERENCE DIMENSIONS (X.XXX) DO NOT REQUIRE INSPECTION		ADRIAN STEEL® ADRIAN STEEL COMPANY 906 JAMES STREET, ADRIAN, MI 49221		REVISION LEVEL B	
FEATURES 0.0 = ± .125 0.00 = ± .062 0.000 = ± .031		HOLES/SLOTS 0.0 = ± .062 0.00 = ± .031 0.000 = ± .015		ANGLES 0° = ± 2° 0.0° = ± 1°	
Material Thickness: per ASTM Std. Weld Callouts per AWS		MAT'L USED: POLYESTER DESIGNED BY: RG			
RELEASE & REVISIONS		DESCRIPTION: E-TRAC,STRAP 12'W/CAM BKL			
INITIAL ECN: 4100 CURRENT ECN: 25465 ECN DESCRIPTION: CREATED PPDS SHEET FOR 23896-0 REVISED BY: WJA		PURCHASED COMPONENT REFERENCED SUPPLIER AND/OR MANUFACTURER AUSTIN HARDWARE / OR EQUIVALENT REFERENCED SUPPLIER AND/OR MANUFACTURER PART NUMBER CCCS-001 COLOR (ONLY LIST IF COLOR SPECIFIC) N/A COMODITY ITEM (Y/N) (YES = ALL DIMENSIONS AND NOTES ARE REFERENCE) (NOTE: DIMENSIONS AND FEATURES MAY VARY FOR A COMODITY ITEM.) YES			
		WEIGHT (Lbs.): 1.60 LBS SEGMENT CODE: MAC		PART NUMBER: 23896-0	