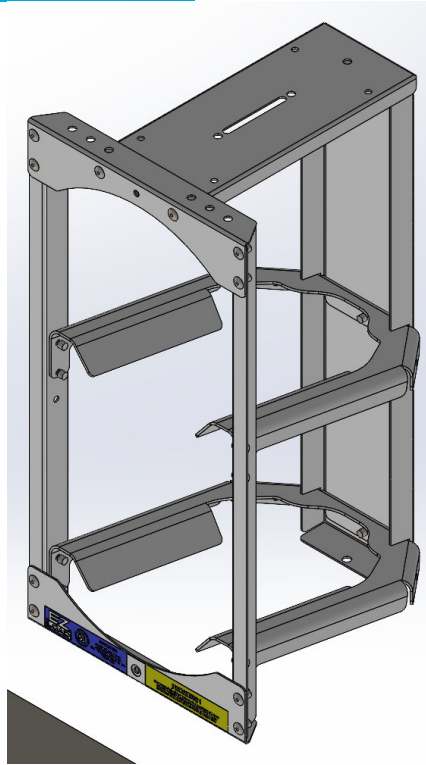




EZLoad Tank Rack, 30lb. (2)



PRODUCT WEIGHT

18.47 LBS

WIDTH x DEPTH x HEIGHT

11.84" x 12.82" x 23.68"

CARRYING CAPABILITY

2-30lb. Tanks

COLOR

GRAY

CATALOG NUMBER

230TR

PRODUCT FEATURES

230TR is designed to fit two thirty pound freon tanks.

Mounting Rack on an angle you will need

- Mercedes metris or Transit = HDWTRMMTR
- Sprinter or GM = HDWTRSPGM
- Transit Connect = HDWTRTC

When mounting over an AD Rail kit use provided spacers to level rack above the rail (no additional mounting kits are required).

TRSHELF30 (1" lip) & TR4SHELF30 (4" lip) are accessory shelves that mount to the top of this rack.

If you want to level the shelf so that it doesn't sit on the 10 degree angle you will also need TRSHLFBRKT.

STACKING TANK RACKS - You must use one of the flat topped rack options on the bottom. (130TR, 150TR, 230TR, 250TR. You will also need BAGSTEPRD).

Tank Racks can be stacked on top of one another for mid & high roof vehicles as long as the shelf end panel next to it is 1/2 or more the height of the second rack when stacked. The tank rack must be properly secured to the shelf end panel, tank rack, and wall of vehicle for both racks.

Some drilling may be required.

SEE PAGE 2 FOR APPLICATION NOTES AND ACCESSORIES, OTHER PRODUCTS THAT WORK WITH THIS UNIT.



CATALOG NUMBER 230TR

PRODUCT APPLICATION

The TR tank racks are designed to fit most all vehicles

ACCESSORIES THAT WILL WORK WITH THIS PRODUCT

| CATALOG NUMBER | DESCRIPTION |
|-----------------------|--|
| TRSHELF30 | TANK RACK 30LB, SHELF - 1" Lip Shelf |
| TR4SHELF30 | TANK RACK 30LB, 4" SHELF - 4" Lip Shelf |
| DVTR4SHELF | TANK RACK, 4"SHELF DIVIDER - Works with TR4SHELF30 |
| TRSHLFBRKT | TANK RACK SHELF BRACKET |
| BAGSTEPRD | To stack tank racks |
| HDWTRMMTR | ANGLED TANK RACK HARDWARE – Works for Mercedes Metris & Transit |
| HDWTRSPGM | ANGLED TANK RACK HARDWARE – Works for Sprinter & GM |
| HDWTRTC | ANGLED TANK RACK HARDWARE – Works for Transit Connect |

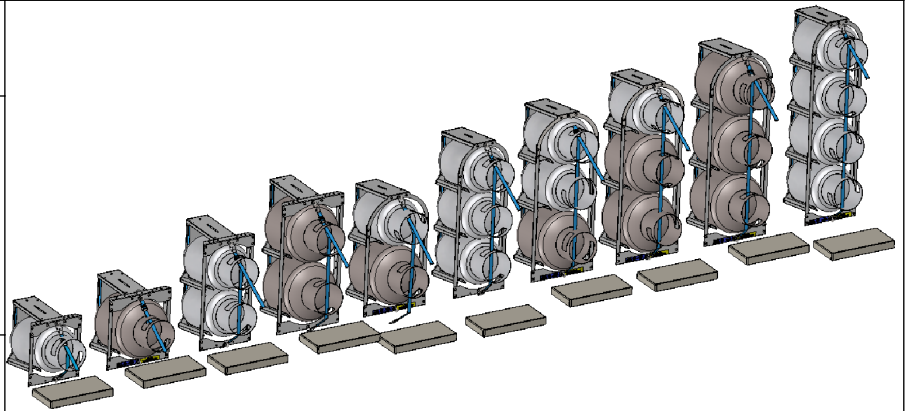
SPECIAL APPLICATION NOTES

INSTR. : 65482
NUMBER

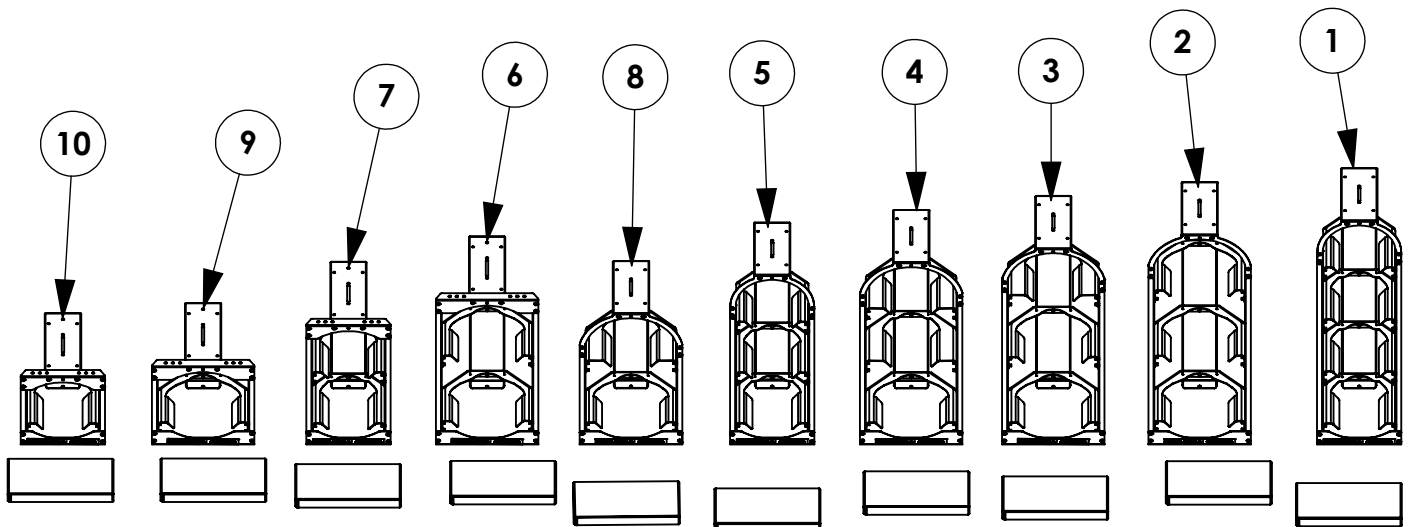
PG: 1
REV: D

PART NUMBER • 130TR 350TR
• 150TR 130250TR
• 230TR 230150TR
• 250TR 430TR
• 330TR 130150TR

PART • TANK RACK, 1-30LB TANK
DESC. • TANK RACK, 1-50LB TANK
• TANK RACK, 2-30LB TANK
• TANK RACK, 2-50LB TANK
• TANK RACK, 3-30LB TANK
• TANK RACK, 3-50LB TANK
• TANK RACK, 1-30LB 2-50LB TANK
• TANK RACK, 2-30LB 1-50LB TANK
• TANK RACK, 4-30LB TANK
• TANK RACK, 1-30LB 1-50LB TANK



| ITEM NO. | PART NUMBER | DESCRIPTION | QTY. |
|----------|-------------|--------------------------------|------|
| 1 | 430TR | TANK RACK 4-30lb TANKS | 1 |
| 2 | 350TR | Tank Rack, 3-50lb Tanks | 1 |
| 3 | 130250TR | TANK RACK, 1-30lb 2-50lb TANKS | 1 |
| 4 | 230150TR | Tank Rack, 2-30lb 50lb Tanks | 1 |
| 5 | 330TR | Tank Rack, 3-30lb Tanks | 1 |
| 6 | 250TR | TANK RACK, 2-50lb TANKS | 1 |
| 7 | 230TR | Tank Rack, 2-30lb Tanks | 1 |
| 8 | 130150TR | TANK RACK, 30LB & 50LB TANK | 1 |
| 9 | 150TR | TANK RACK, 1-50lb TANK | 1 |
| 10 | 130TR | Tank Rack, 1-30lb Tank | 1 |



GET TO KNOW THE VEHICLE - AT THE BEGINNING OF ANY INSTALLATION, CHECK THE LOCATION OF THE FUEL TANK, FUEL LINES, BRAKE LINES, HIGH VOLTAGE BATTERIES AND WIRING HARNESSSES TO AVOID INJURY OR PROPERTY DAMAGE FROM TOOL CONTACT.

SEAL ALL EXTERIOR HOLES - ALL INSTALLATION HOLES SHOULD BE SEALED WITH BUTYL TAPE OR SILICON TO PREVENT WATER AND EXHAUST GASES FROM ENTERING THE VEHICLE.

CONTROL DRILL DEPTH - TO AVOID DAMAGE TO THE VEHICLE, USE A DRILL STOP OR CLEARED STEP BIT WHEN DRILLING INSTALLATION HOLES.

ALWAYS ADD PRIMER - WHEN ADDING INSTALLATION HOLES BE SURE TO USE A SELF-ETCHING PRIMER TO PREVENT CORROSION, FASTENER FAILURE AND INJURY.

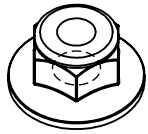
MOUNTING POINTS MUST HAVE METAL-TO-METAL CONTACT - USE PROVIDED MOUNTING SPACERS TO ACCOMMODATE FOR VEHICLE FEATURES, CARPET OR SUBFLOORS.

PROVIDE CLEARANCE FOR SPACERS - IF THE INSTALLATION VEHICLE CONTAINS A CARPET OR SUBFLOOR, USE A 1-3/16" DIAMETER CARPET CUTTER (P/N: 31183-0) AT ALL MOUNTING LOCATIONS TO OPEN UP ROOM FOR SPACERS.

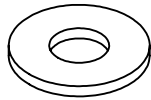
CHECK SPACER ORIENTATION - BE SURE THAT THE INDENT IN THE SPACER COVERS THE PLUSNUT HEAD; THIS ENSURES THE MOST METAL-TO-METAL CONTACT AND REDUCES VIBRATION.

PLUSNUT INSTALLATION - A PLUSNUT GUN IS RECOMMENDED FOR PLUSNUT INSTALLATION FOR ITS PRODUCTION SPEED. HOWEVER, A PLUSNUT SETTING TOOL CAN ALSO BE USED (P/N: 22200-0).

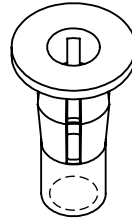
THRU-BOLT CLEARANCE - WHEN USING A THRU-BOLT AT ANY MOUNTING LOCATION, BE SURE THAT YOUR HOLE HAS 1/16" CLEARANCE.

FASTENERS USED

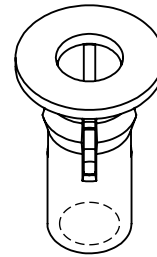
FAS0055
1/4-20 ZP NLK
FLG HEX NUT
QTY: 7



FAS0124
1/4 ZN
FLATWASHER
QTY: 2



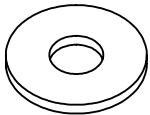
FAS0052
1/4-20 PB DC
PLUSNUT
QTY: 2



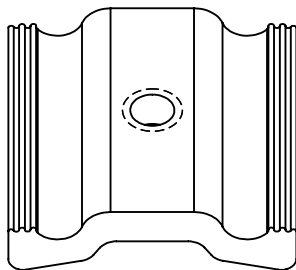
FAS0091
5/16-18 PB DC
PLUSNUT
QTY: 3



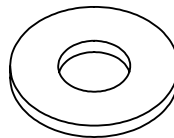
FAS0060
1/4 ZP
SPLIT LCK WASHER
QTY: 2



FAS0067
1/4 ZP
FLAT WASHER
QTY: 7



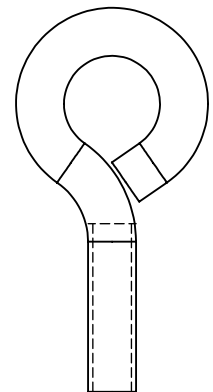
35335-0
1.5" AD SLIDE
QTY: 1



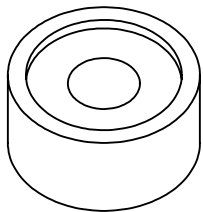
FAS0086
5/16 ZP
FLAT WASHER
QTY: 4



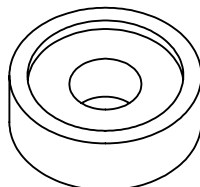
FAS0165
5/16-18X.62 ZN
HH SCREW
QTY: 1



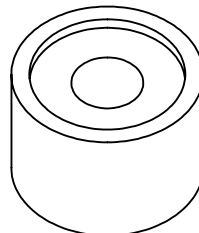
FAS0050
1/4-20X.5X.88 ZP
EYEBOLT
QTY: 2



FAS0831
1/2 ZP
FLR SPACER
QTY: 3



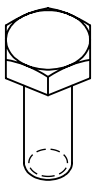
03927-1
11/32 ZP
FLR SPACER
QTY: 3



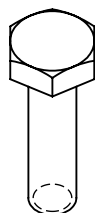
03927-2
11/16 ZP
FLR SPACER
QTY: 5



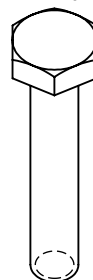
FAS0098
5/16 ZP
SPLIT LCK WASHER
QTY: 4



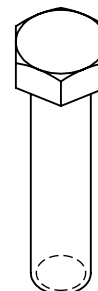
FAS0063
1/4-20X.75 G5 ZN
HH SCREW
QTY: 3



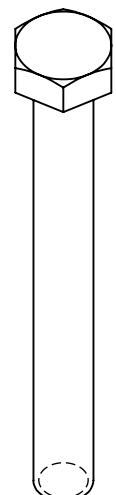
FAS0078
1/4-20X1 G8 ZP
HH SCREW
QTY: 2



FAS0079
1/4-20X1.5 G8 ZP
HH SCREW
QTY: 4

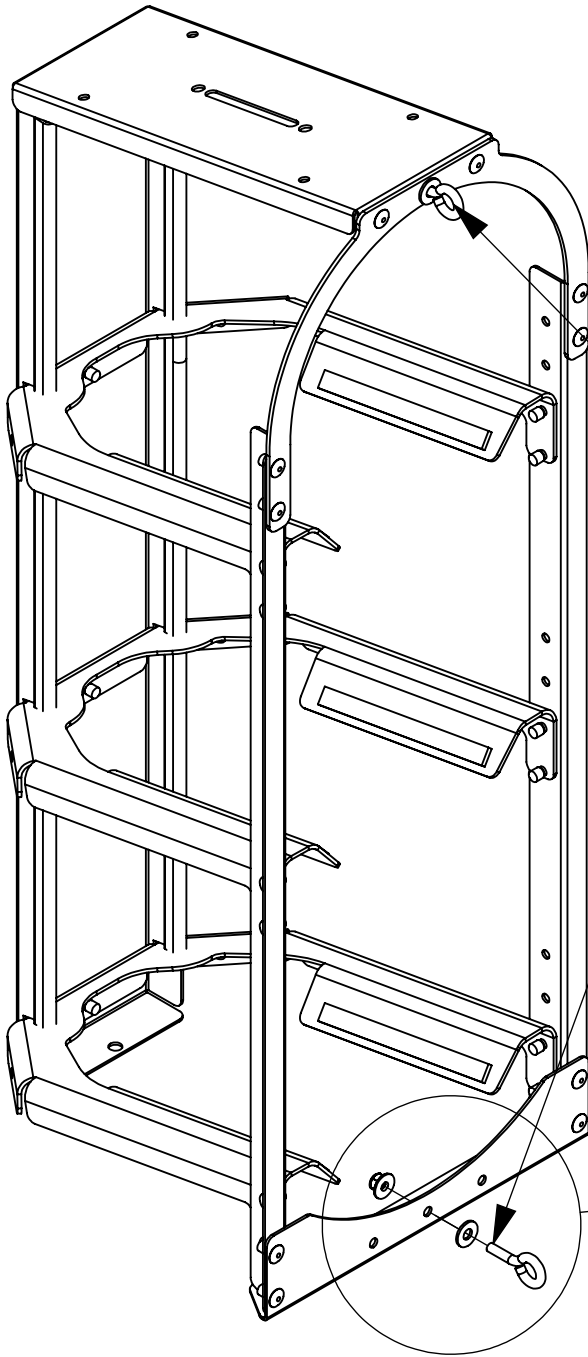


FAS0092
5/16-18X1.5 G8ZP
HH SCREW
QTY: 3

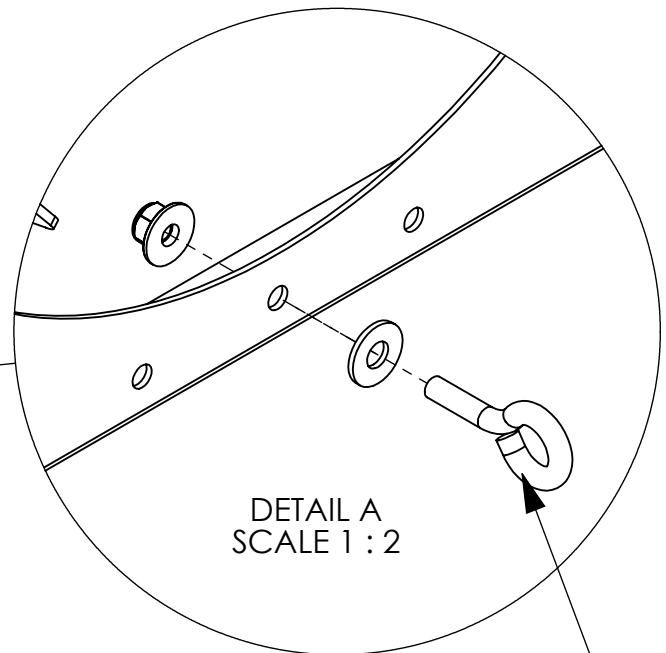


FAS0524
5/16-18X3 G5 ZP
HH SCREW
QTY: 3

BEGIN ASSEMBLY
STEP 1 - INSTALL EYEBOLTS



**EYELET INSTALLED VERTICALLY
FOR EASY STRAP INSTALL**



DETAIL A
SCALE 1 : 2

**USE FAS0050, FAS0124 AND FAS0055
(2 PLACES ALL RACKS)
PHILLIPS SCREW DRIVER
7/16 WRENCH**

STEP 3 - ASSEMBLE PINCHWELD

**TRIM PINCHWELD WITH
TIN SNIPS TO FIT RACK
LENGTH**

INSTALL PINCHWELD

10" PINCHWELD-44175

2 PLACES - 130TR

4 PLACES - 230TR

6 PLACES - 330TR

4 PLACES - 230150TR

2 PLACES - 130250TR

8 PLACES - 430TR

13" PINCHWELD-57974

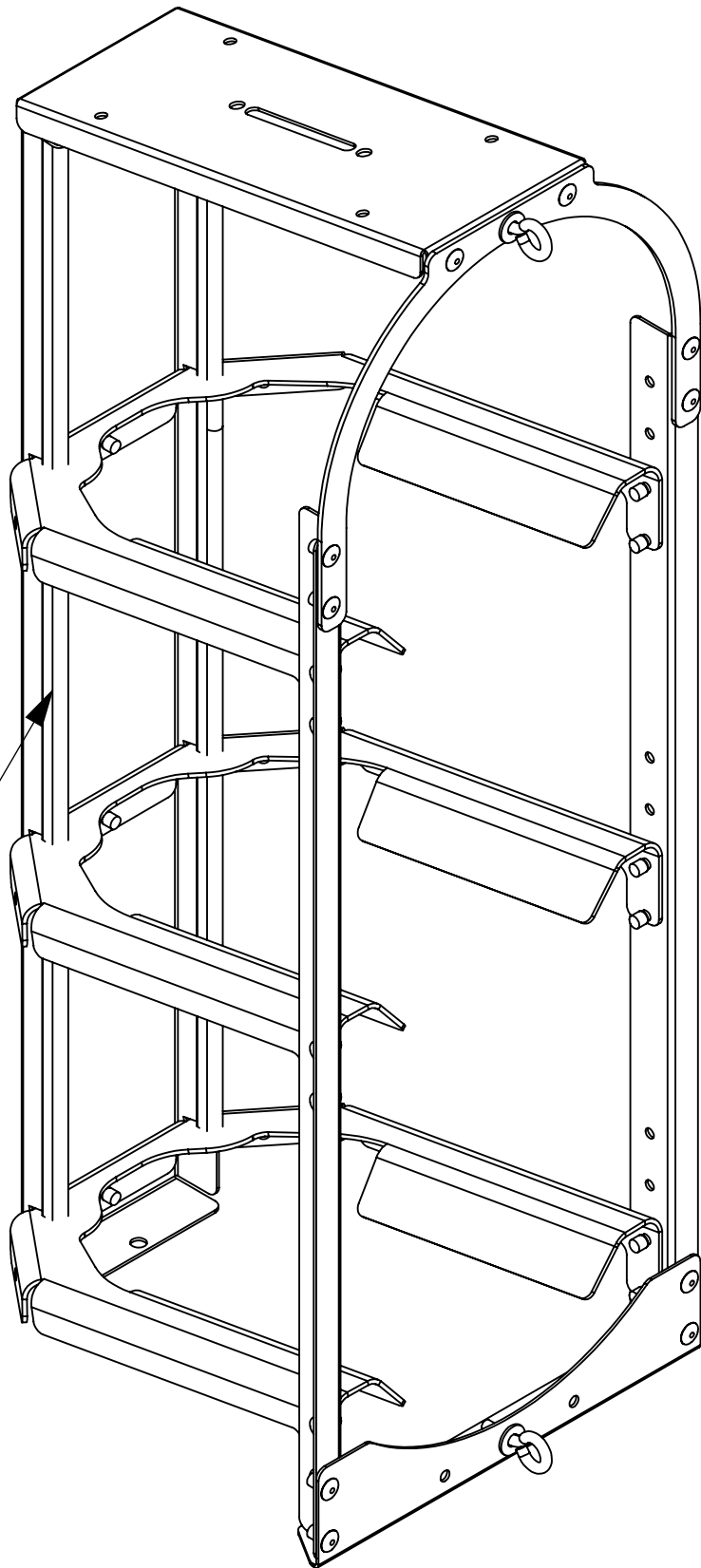
2 PLACES - 150TR

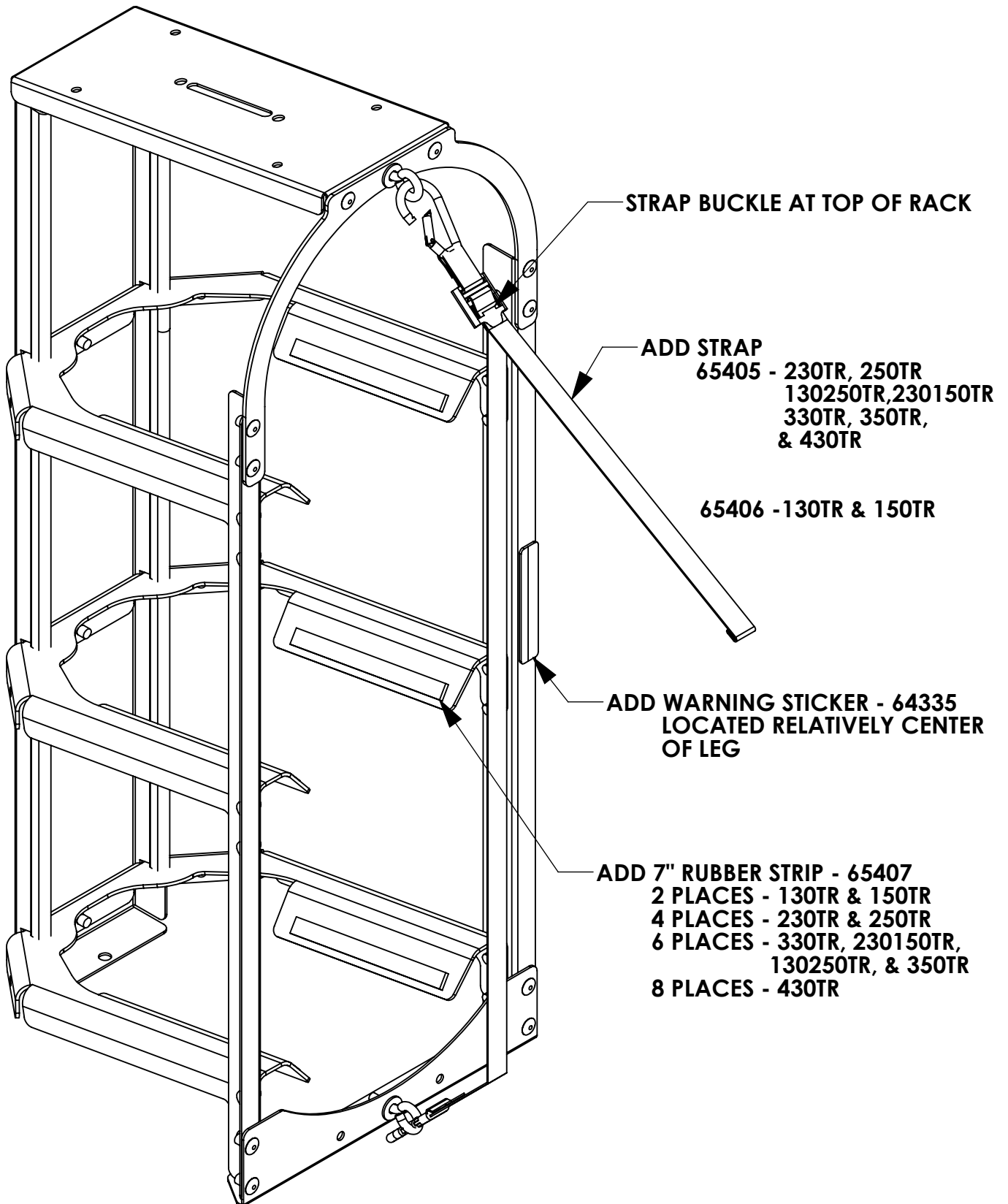
4 PLACES - 250TR

2 PLACES - 230150TR

4 PLACES - 130250TR

6 PLACES - 350TR



STEP 4 - ASSEMBLE 7" RUBBER STRIP AND STRAP

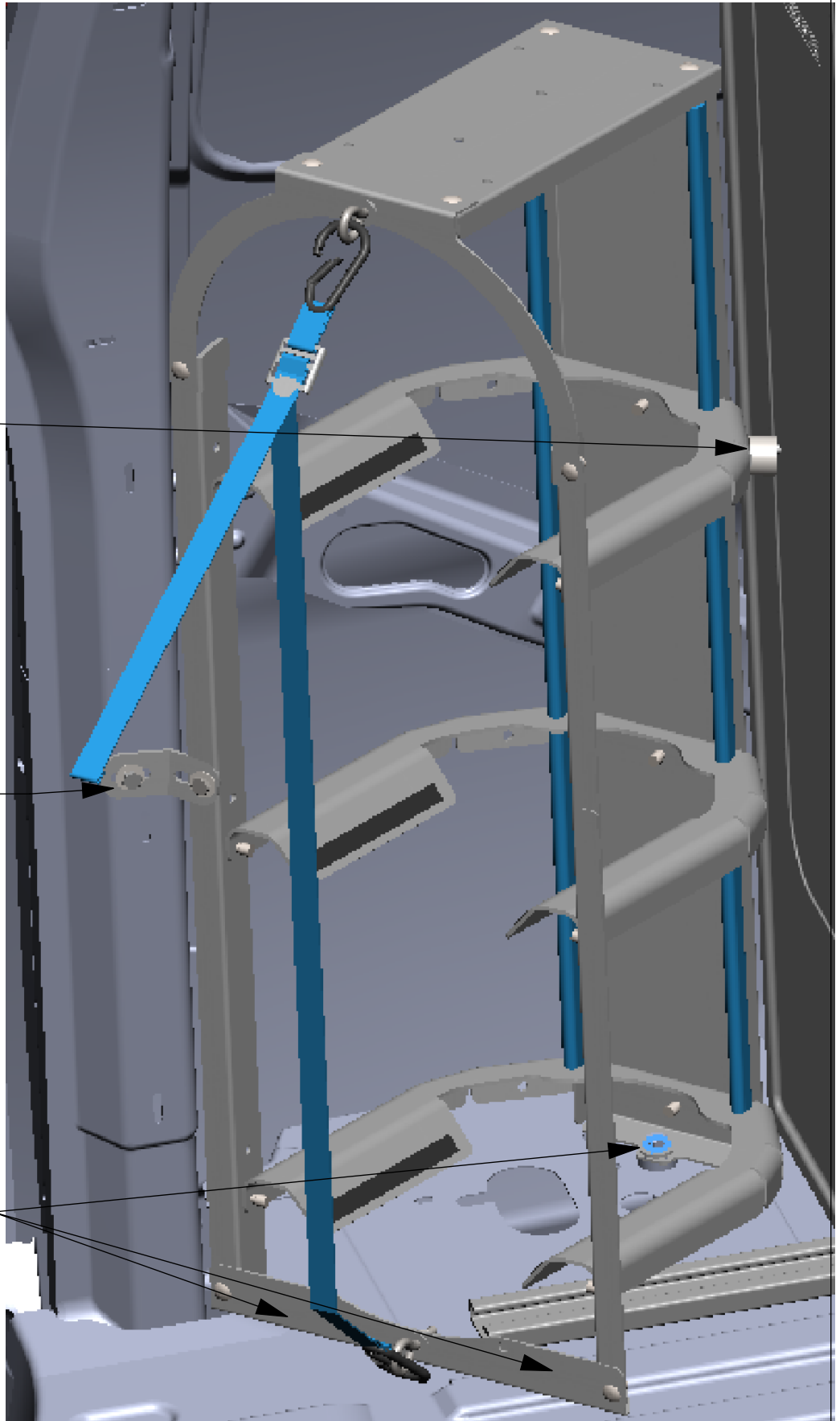
MOUNTING TANK RACK IN REAR OF VEHICLE AT 45 DEGREE ANGLE

NOTE: PROMASTER 136WB CANNOT BE MOUNTED AT A 45 DEGREE ANGLE

FASTEN TO END PANEL
03927-2
FAS0079
FAS0067
FAS0055

WING BRACKET 46768-G
FAS0052
FAS0067
FAS0060
FAS0079

3 PLACES
FAS0092
FAS0098
FAS0086
USE SPACERS AS REQUIRED

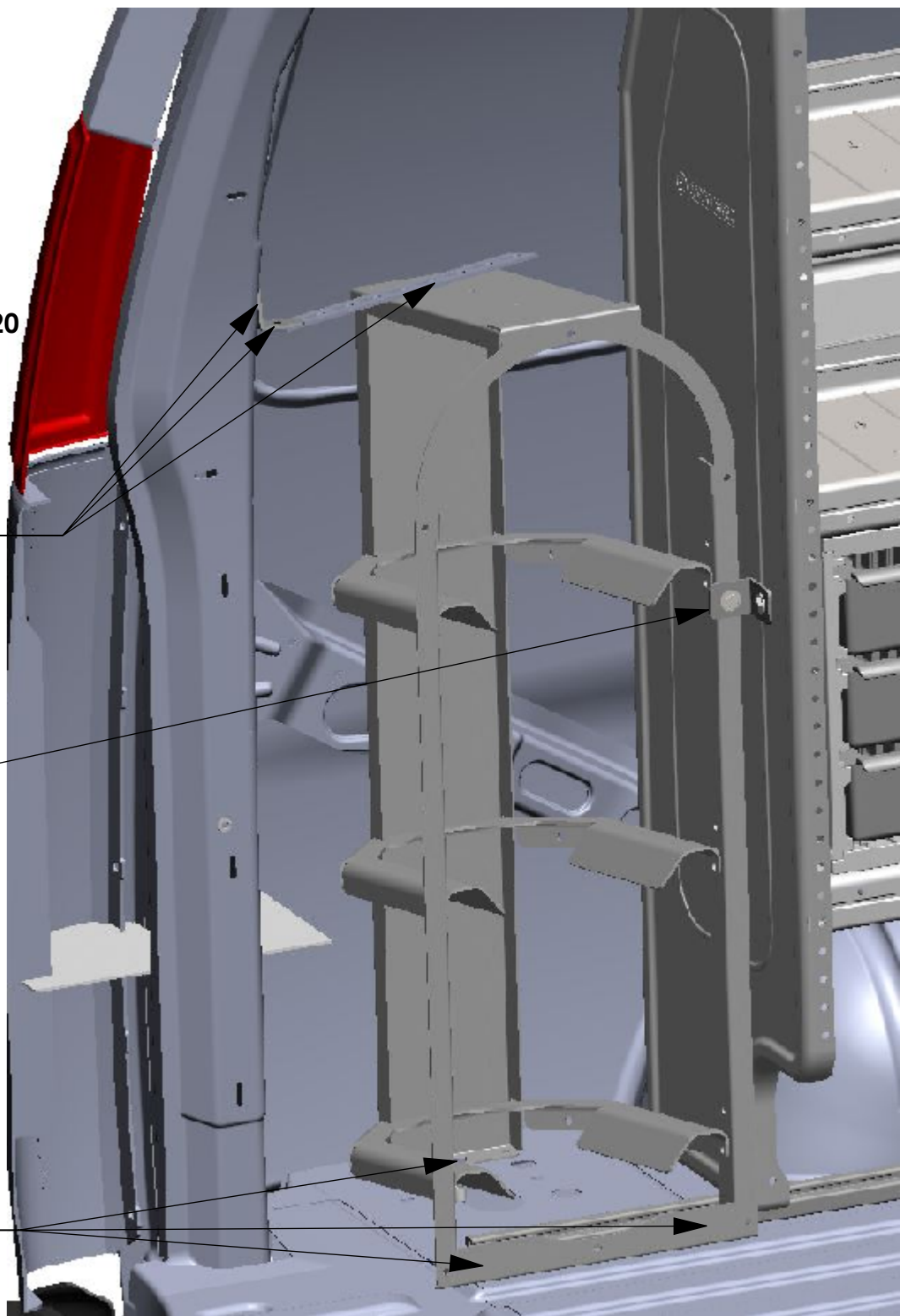


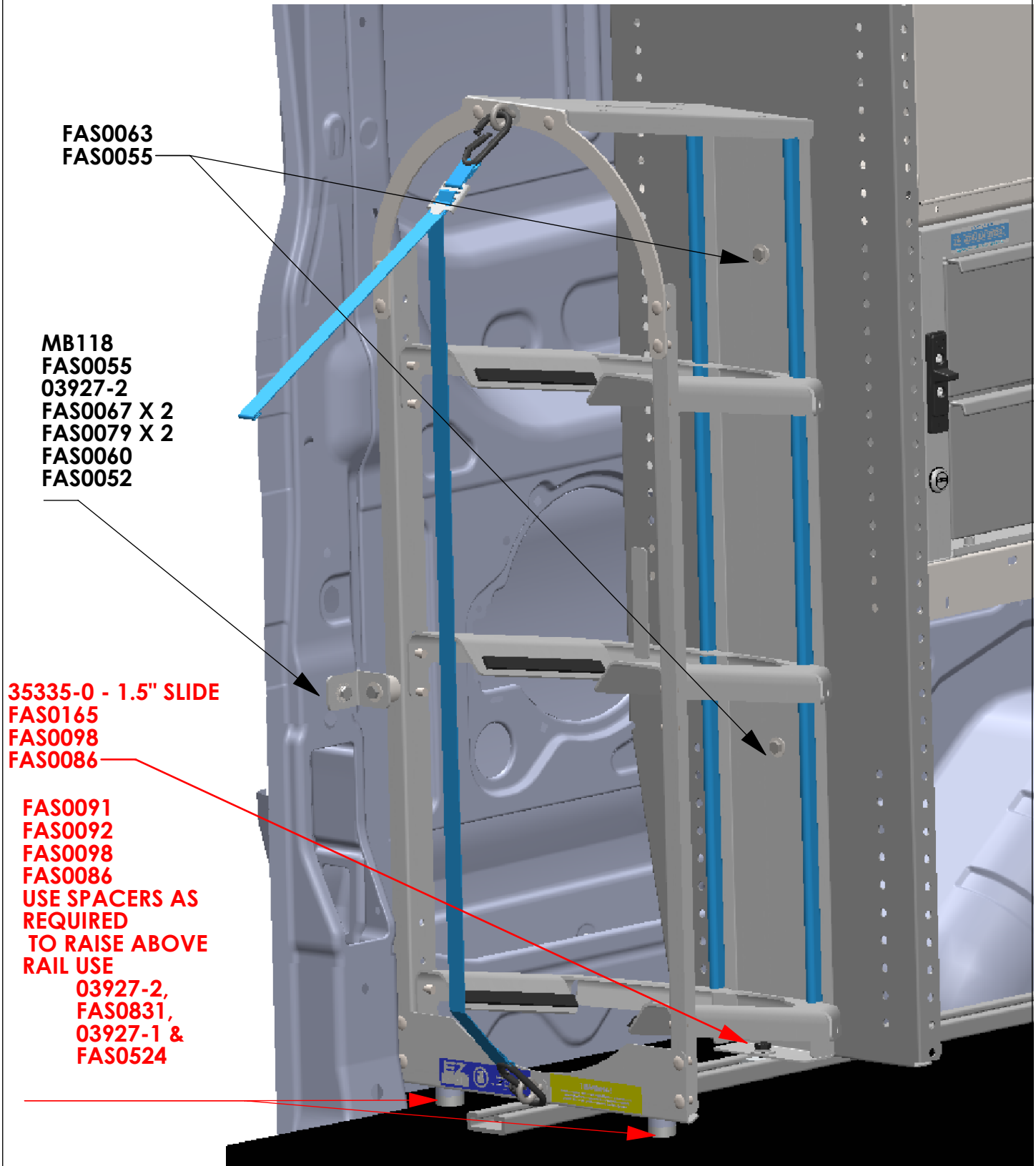
VEHICLE INSTALL BACK DOOR FACING INWARDS

MB118
MB120
FASTEN TO D-PILLAR
FAS0052
FAS0067
FAS0060
FAS0079
FASTEN MB118 TO MB120
FAS0078
FAS0067
FAS0055
FASTEN TO TANK RACK
FAS0063
FAS0067
FAS0055

MB118
FAS0078
FAS0067 X 2
FAS0055 X 2
FAS0063

3 PLACES
FAS0091 X1
FAS0092 X 1
FAS0086 X 1
FAS0098 X 1
USE SPACERS AS
REQUIRED



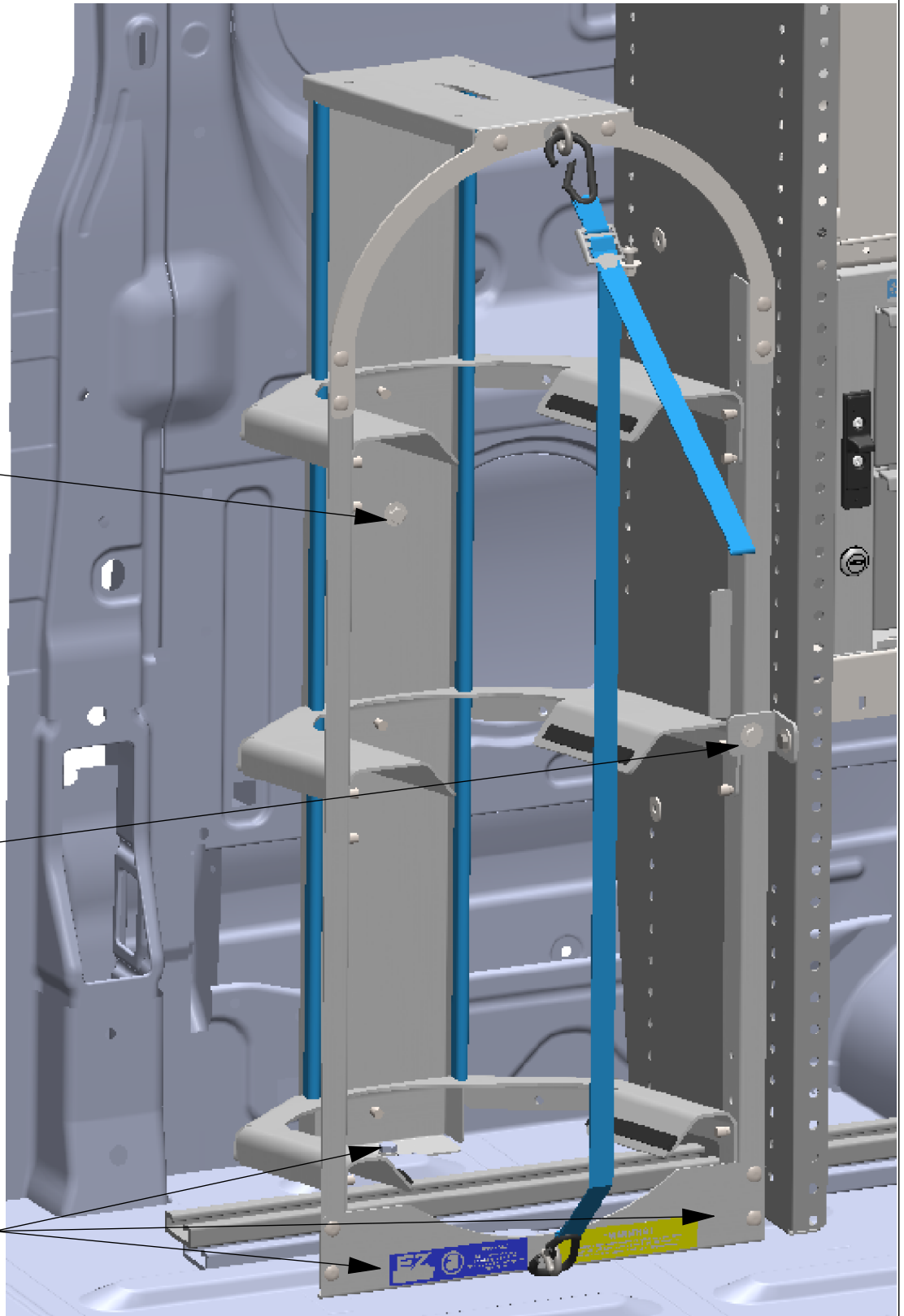
VEHICLE INSTALL SIDE DOOR FACING FORWARDS

VEHICLE INSTALL SIDE DOOR FACING INWARD

FAS0052 X 1
FAS0067 X 1
FAS0060 X 1
FAS0078 X 1

MB118
FAS0055 X2
FAS0067 X 2
FAS0078
FAS0063

3 PLACES
FAS0091 X1
FAS0092 X 1
FAS0086 X 1
FAS0098 X 1
USE SPACERS AS
REQUIRED



NOTE:

SHELF END PANEL MUST BE AT LEAST HALF THE HEIGHT OF THE SECOND STACKED TANK RACK IN ORDER TO STACK THEM. THIS GIVES PROPER SECURING & FASTENING ATTACHMENTS

IF YOU WANT TO STACK THE RACKS YOU WILL ALSO NEED BAGSTEPRD

BE SURE TO INSTALL HARDWARE BRACKETS & FASTENING PER RACK. SEE PAGES 7-10 FOR INSTALLATION

BAGSTEPRD
FAS0438 X 3
FAS0440 X 3

