



EZLoad Tank Rack, 30lb. (2), 50lb. (1)

PRODUCT WEIGHT

25.12 LBS

WIDTH x DEPTH x HEIGHT

14.41" x 12.82" x 36.30"

CARRYING CAPABILITY

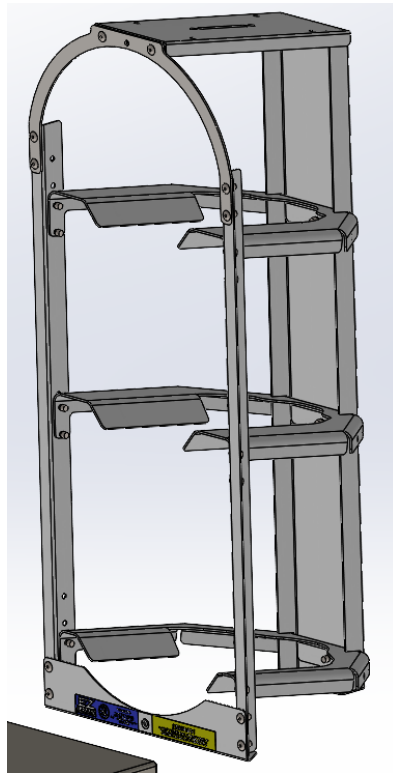
**2-30lb. Tanks,
1-50lb. Tank**

COLOR

GRAY

CATALOG NUMBER

230150TR



PRODUCT FEATURES

230150TR is designed to fit two thirty pound freon tanks and one fifty pound freon tank.

Mounting Rack on an angle you will need

- Mercedes Metris or Transit = HDWTRMMTR
- Sprinter or GM = HDWTRSPGM
- Transit Connect = HDWTRTC

When mounting over an AD Rail kit use provided spacers to level rack above the rail (no additional mounting kits are required).

TRSHELF30 (1" lip) & TR4SHELF30 (4" lip) are accessory shelves that mount to the top of this rack.

If you want to level the shelf so that it doesn't sit on the 10 degree angle you will also need TRSHLFBRKT.

STACKING TANK RACKS - You must use one of the flat topped rack options on the bottom. (130TR, 150TR, 230TR, 250TR. You will also need BAGSTEPRD).

Tank Racks can be stacked on top of one another for mid & high roof vehicles as long as the shelf end panel next to it is 1/2 or more the height of the second rack when stacked. The tank rack must be properly secured to the shelf end panel, tank rack, and wall of vehicle for both racks.

Some drilling may be required.

SEE PAGE 2 FOR APPLICATION NOTES AND ACCESSORIES, OTHER PRODUCTS THAT WORK WITH THIS UNIT.



CATALOG NUMBER 230150TR

PRODUCT APPLICATION

The TR tank racks are designed to fit most all vehicles

ACCESSORIES THAT WILL WORK WITH THIS PRODUCT

CATALOG NUMBER	DESCRIPTION
TRSHELF30	TANK RACK 30LB, SHELF - 1" Lip Shelf
TR4SHELF30	TANK RACK 30LB, 4" SHELF - 4" Lip Shelf
DVTR4SHELF	TANK RACK, 4"SHELF DIVIDER - Works with TR4SHELF30
TRSHLFBRKT	TANK RACK SHELF BRACKET
BAGSTEPRD	To stack tank racks
HDWTRMMTR	ANGLED TANK RACK HARDWARE – Works for Mercedes Metris & Transit
HDWTRSPGM	ANGLED TANK RACK HARDWARE – Works for Sprinter & GM
HDWTRTC	ANGLED TANK RACK HARDWARE – Works for Transit Connect

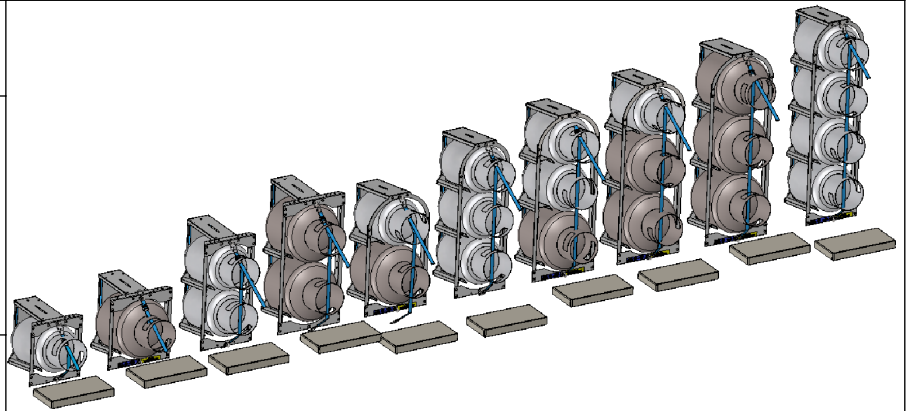
SPECIAL APPLICATION NOTES

INSTR.
NUMBER : **65482**

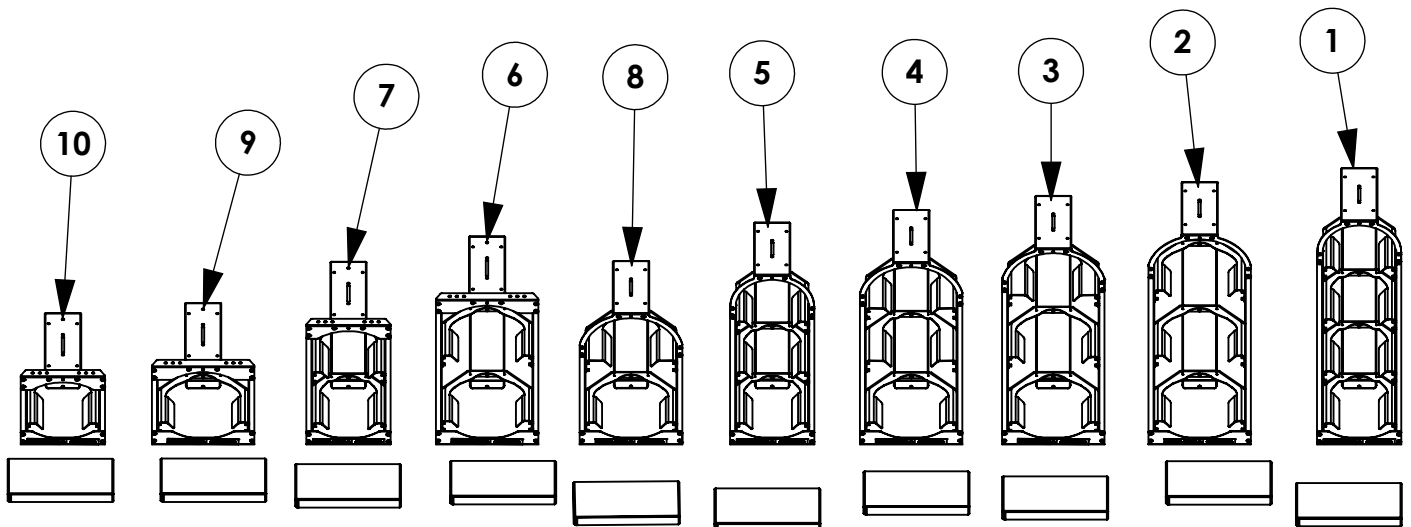
PG: **1** REV: **D**

PART NUMBER • **130TR** **350TR**
• **150TR** **130250TR**
• **230TR** **230150TR**
• **250TR** **430TR**
• **330TR** **130150TR**

PART • TANK RACK, 1-30LB TANK
DESC. • TANK RACK, 1-50LB TANK
• TANK RACK, 2-30LB TANK
• TANK RACK, 2-50LB TANK
• TANK RACK, 3-30LB TANK
• TANK RACK, 3-50LB TANK
• TANK RACK, 1-30LB 2-50LB TANK
• TANK RACK, 2-30LB 1-50LB TANK
• TANK RACK, 4-30LB TANK
• TANK RACK, 1-30LB 1-50LB TANK



ITEM NO.	PART NUMBER	DESCRIPTION	QTY.
1	430TR	TANK RACK 4-30lb TANKS	1
2	350TR	Tank Rack, 3-50lb Tanks	1
3	130250TR	TANK RACK, 1-30lb 2-50lb TANKS	1
4	230150TR	Tank Rack, 2-30lb 50lb Tanks	1
5	330TR	Tank Rack, 3-30lb Tanks	1
6	250TR	TANK RACK, 2-50lb TANKS	1
7	230TR	Tank Rack, 2-30lb Tanks	1
8	130150TR	TANK RACK, 30LB & 50LB TANK	1
9	150TR	TANK RACK, 1-50lb TANK	1
10	130TR	Tank Rack, 1-30lb Tank	1



GET TO KNOW THE VEHICLE - AT THE BEGINNING OF ANY INSTALLATION, CHECK THE LOCATION OF THE FUEL TANK, FUEL LINES, BRAKE LINES, HIGH VOLTAGE BATTERIES AND WIRING HARNESSSES TO AVOID INJURY OR PROPERTY DAMAGE FROM TOOL CONTACT.

SEAL ALL EXTERIOR HOLES - ALL INSTALLATION HOLES SHOULD BE SEALED WITH BUTYL TAPE OR SILICON TO PREVENT WATER AND EXHAUST GASES FROM ENTERING THE VEHICLE.

CONTROL DRILL DEPTH - TO AVOID DAMAGE TO THE VEHICLE, USE A DRILL STOP OR CLEARED STEP BIT WHEN DRILLING INSTALLATION HOLES.

ALWAYS ADD PRIMER - WHEN ADDING INSTALLATION HOLES BE SURE TO USE A SELF-ETCHING PRIMER TO PREVENT CORROSION, FASTENER FAILURE AND INJURY.

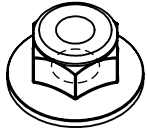
MOUNTING POINTS MUST HAVE METAL-TO-METAL CONTACT - USE PROVIDED MOUNTING SPACERS TO ACCOMMODATE FOR VEHICLE FEATURES, CARPET OR SUBFLOORS.

PROVIDE CLEARANCE FOR SPACERS - IF THE INSTALLATION VEHICLE CONTAINS A CARPET OR SUBFLOOR, USE A 1-3/16" DIAMETER CARPET CUTTER (P/N: 31183-0) AT ALL MOUNTING LOCATIONS TO OPEN UP ROOM FOR SPACERS.

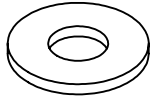
CHECK SPACER ORIENTATION - BE SURE THAT THE INDENT IN THE SPACER COVERS THE PLUSNUT HEAD; THIS ENSURES THE MOST METAL-TO-METAL CONTACT AND REDUCES VIBRATION.

PLUSNUT INSTALLATION - A PLUSNUT GUN IS RECOMMENDED FOR PLUSNUT INSTALLATION FOR ITS PRODUCTION SPEED. HOWEVER, A PLUSNUT SETTING TOOL CAN ALSO BE USED (P/N: 22200-0).

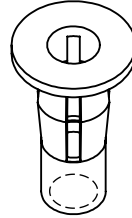
THRU-BOLT CLEARANCE - WHEN USING A THRU-BOLT AT ANY MOUNTING LOCATION, BE SURE THAT YOUR HOLE HAS 1/16" CLEARANCE.

FASTENERS USED

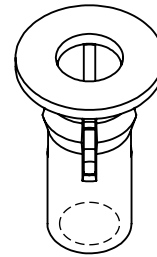
FAS0055
1/4-20 ZP NLK
FLG HEX NUT
QTY: 7



FAS0124
1/4 ZN
FLATWASHER
QTY: 2



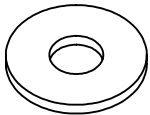
FAS0052
1/4-20 PB DC
PLUSNUT
QTY: 2



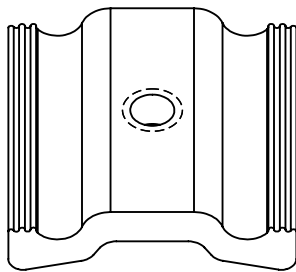
FAS0091
5/16-18 PB DC
PLUSNUT
QTY: 3



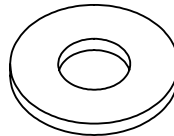
FAS0060
1/4 ZP
SPLIT LCK WASHER
QTY: 2



FAS0067
1/4 ZP
FLAT WASHER
QTY: 7



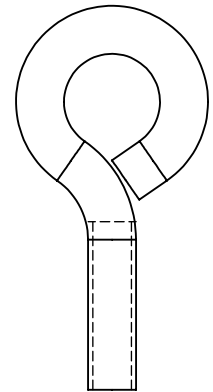
35335-0
1.5" AD SLIDE
QTY: 1



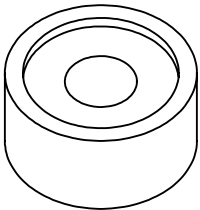
FAS0086
5/16 ZP
FLAT WASHER
QTY: 4



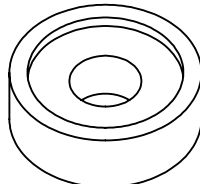
FAS0165
5/16-18X.62 ZN
HH SCREW
QTY: 1



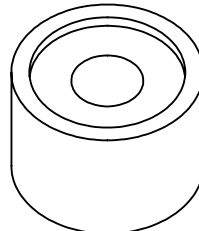
FAS0050
1/4-20X.5X.88 ZP
EYEBOLT
QTY: 2



FAS0831
1/2 ZP
FLR SPACER
QTY: 3



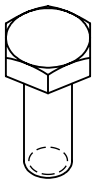
03927-1
11/32 ZP
FLR SPACER
QTY: 3



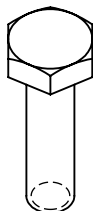
03927-2
11/16 ZP
FLR SPACER
QTY: 5



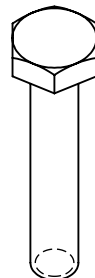
FAS0098
5/16 ZP
SPLIT LCK WASHER
QTY: 4



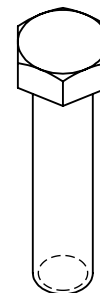
FAS0063
1/4-20X.75 G5 ZN
HH SCREW
QTY: 3



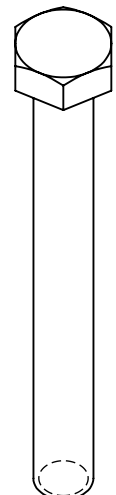
FAS0078
1/4-20X1 G8 ZP
HH SCREW
QTY: 2



FAS0079
1/4-20X1.5 G8 ZP
HH SCREW
QTY: 4

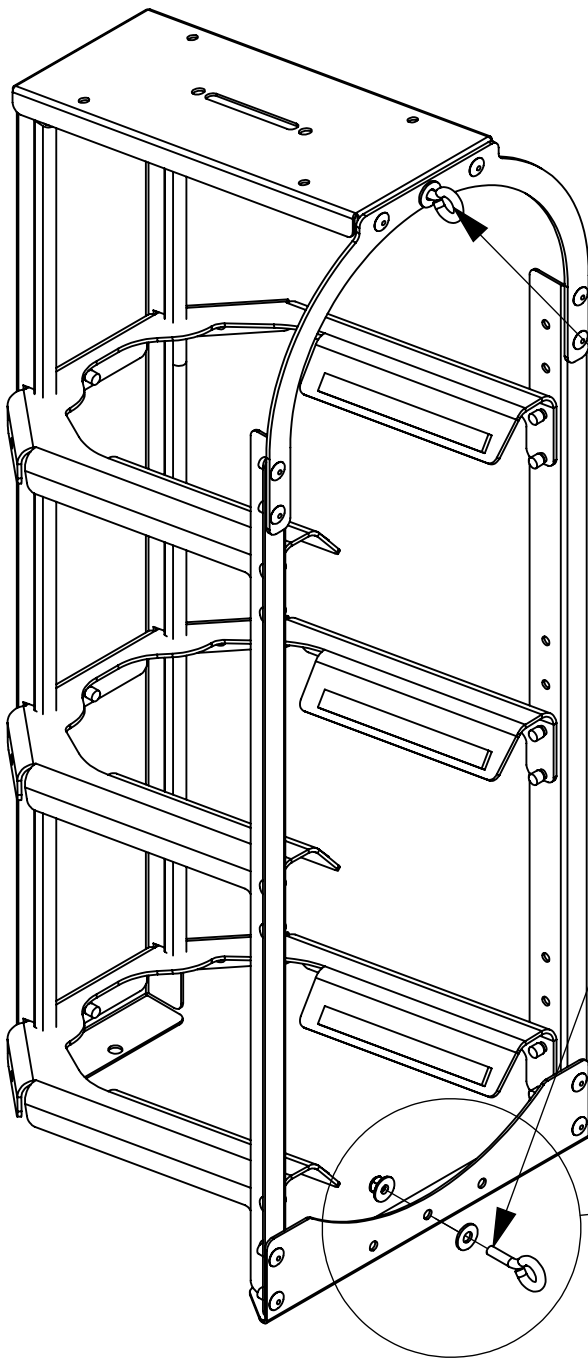


FAS0092
5/16-18X1.5 G8ZP
HH SCREW
QTY: 3

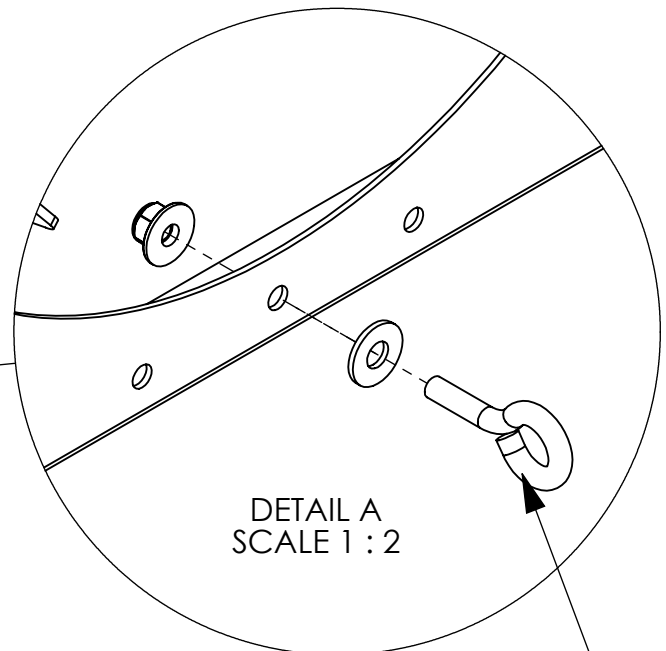


FAS0524
5/16-18X3 G5 ZP
HH SCREW
QTY: 3

BEGIN ASSEMBLY
STEP 1 - INSTALL EYEBOLTS



**EYELET INSTALLED VERTICALLY
FOR EASY STRAP INSTALL**



DETAIL A
SCALE 1 : 2

**USE FAS0050, FAS0124 AND FAS0055
(2 PLACES ALL RACKS)
PHILLIPS SCREW DRIVER
7/16 WRENCH**

STEP 3 - ASSEMBLE PINCHWELD

**TRIM PINCHWELD WITH
TIN SNIPS TO FIT RACK
LENGTH**

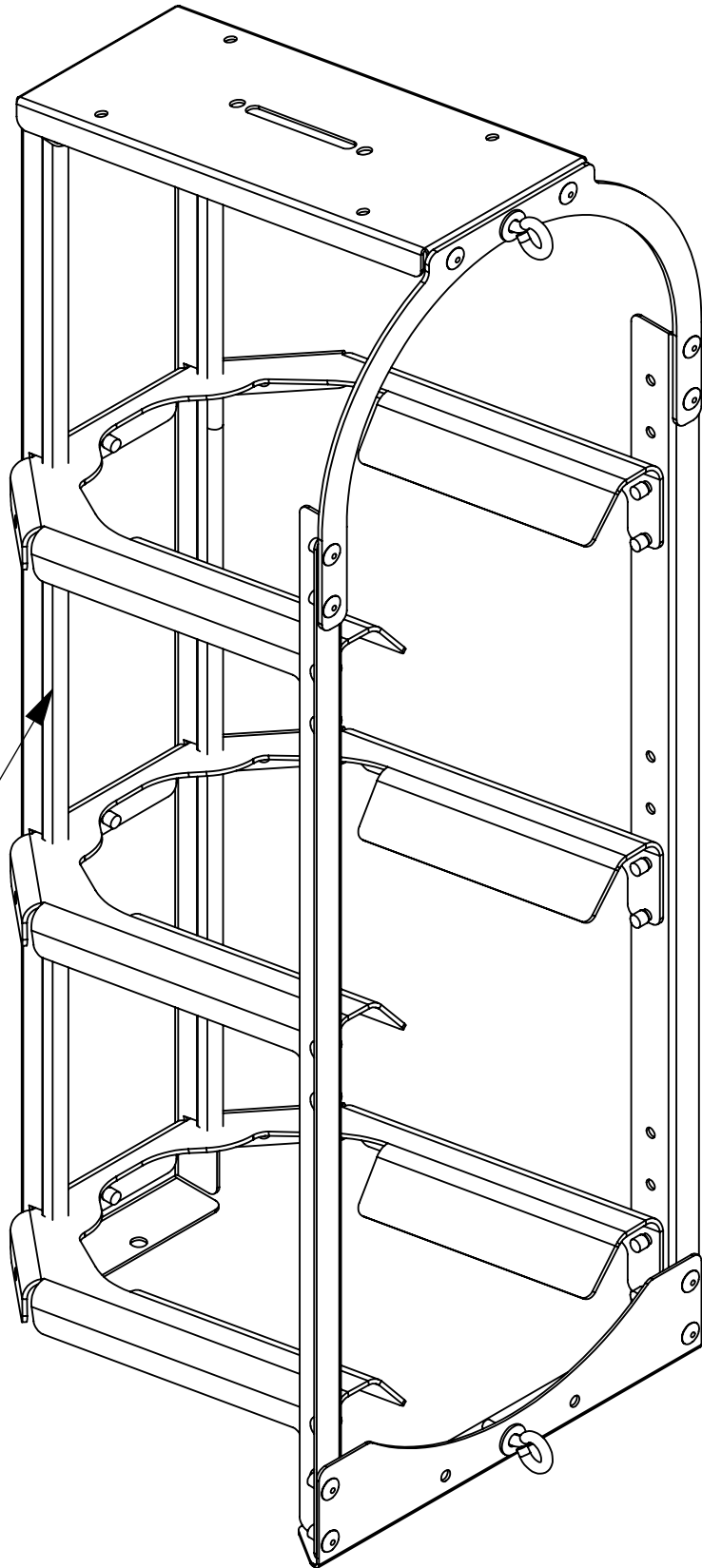
INSTALL PINCHWELD

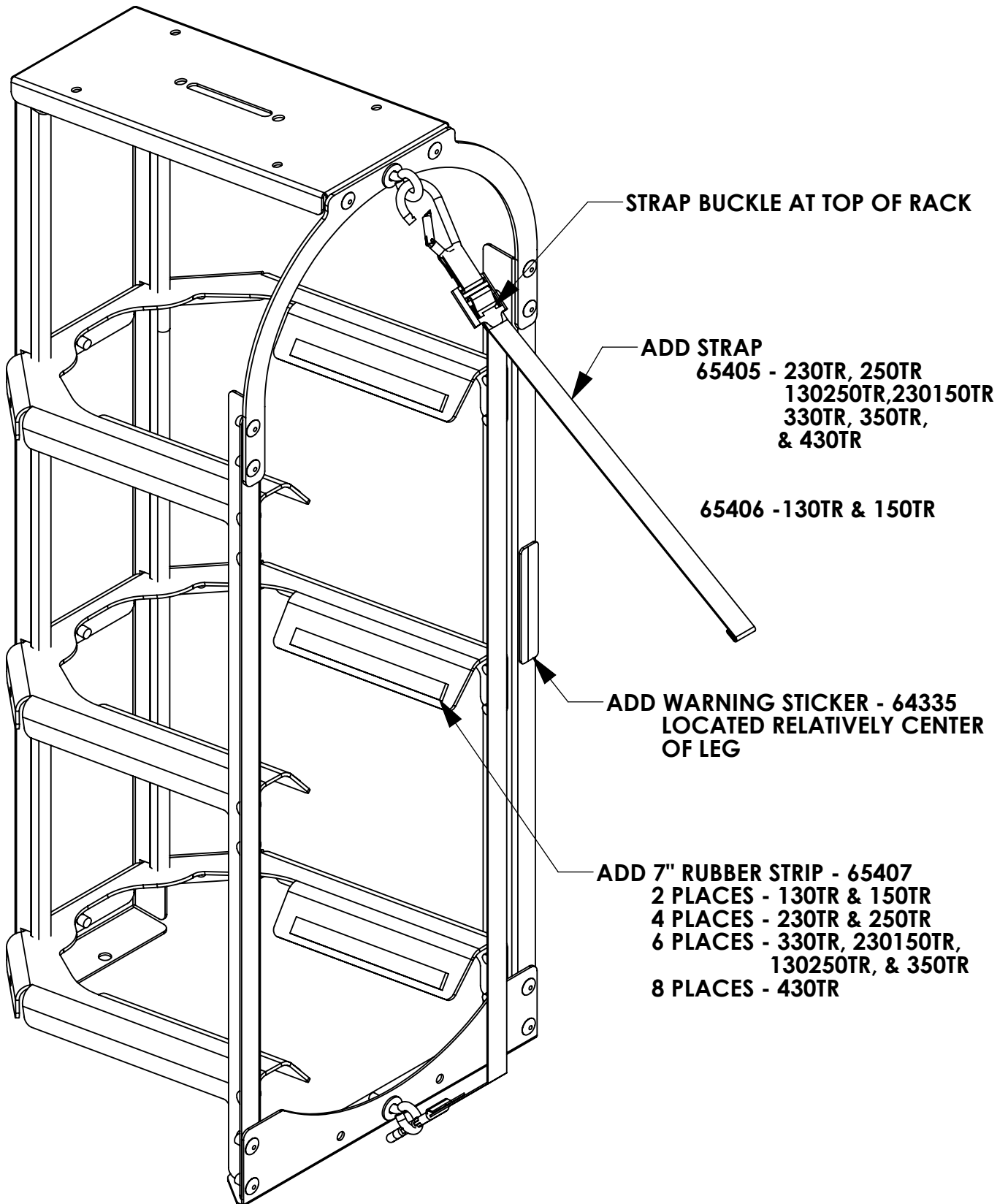
10" PINCHWELD-44175

- 2 PLACES - 130TR
- 4 PLACES - 230TR
- 6 PLACES - 330TR
- 4 PLACES - 230150TR
- 2 PLACES - 130250TR
- 8 PLACES - 430TR

13" PINCHWELD-57974

- 2 PLACES - 150TR
- 4 PLACES - 250TR
- 2 PLACES - 230150TR
- 4 PLACES - 130250TR
- 6 PLACES - 350TR



STEP 4 - ASSEMBLE 7" RUBBER STRIP AND STRAP

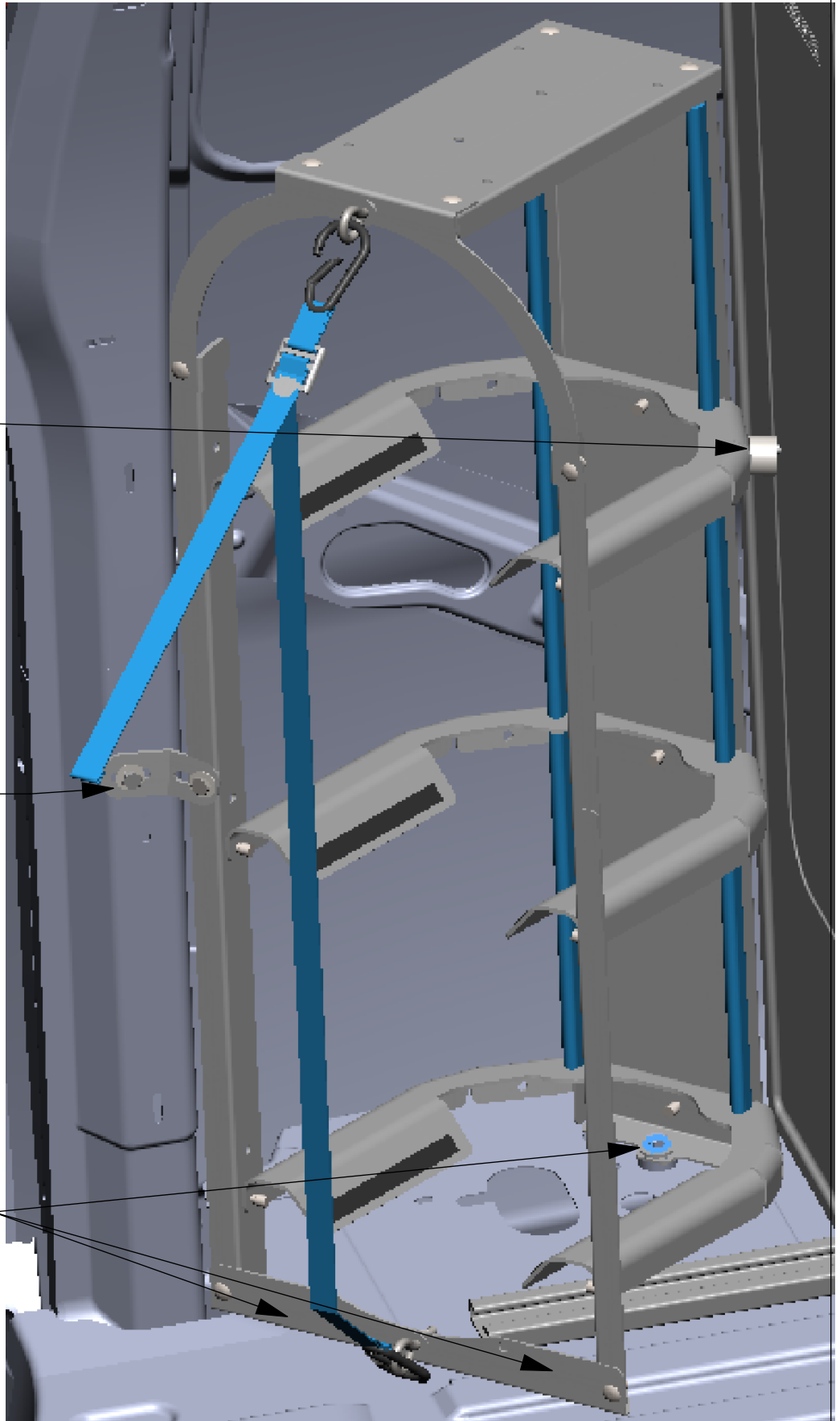
MOUNTING TANK RACK IN REAR OF VEHICLE AT 45 DEGREE ANGLE

NOTE: PROMASTER 136WB CANNOT BE MOUNTED AT A 45 DEGREE ANGLE

FASTEN TO END PANEL
03927-2
FAS0079
FAS0067
FAS0055

WING BRACKET 46768-G
FAS0052
FAS0067
FAS0060
FAS0079

3 PLACES
FAS0092
FAS0098
FAS0086
USE SPACERS AS REQUIRED

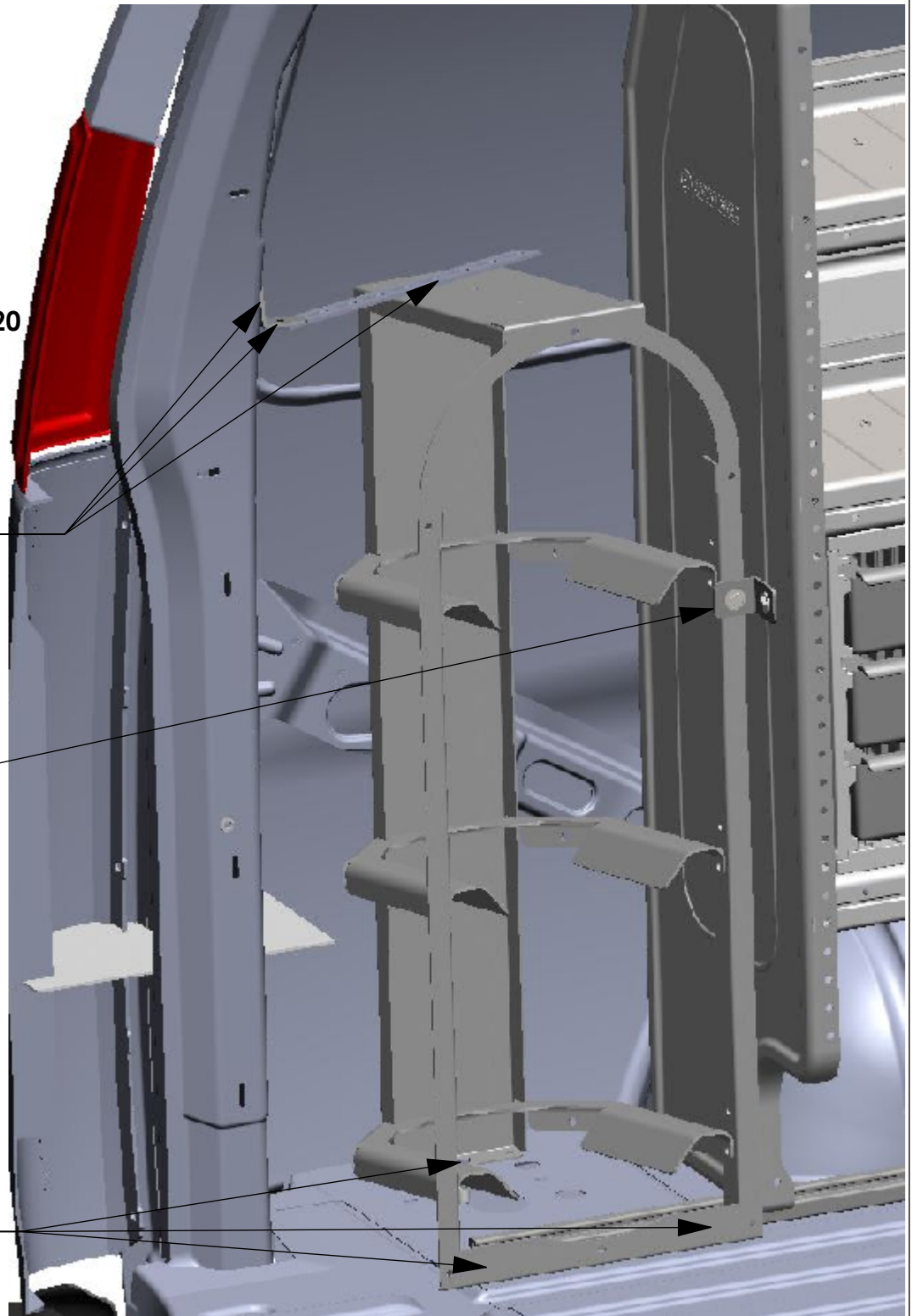


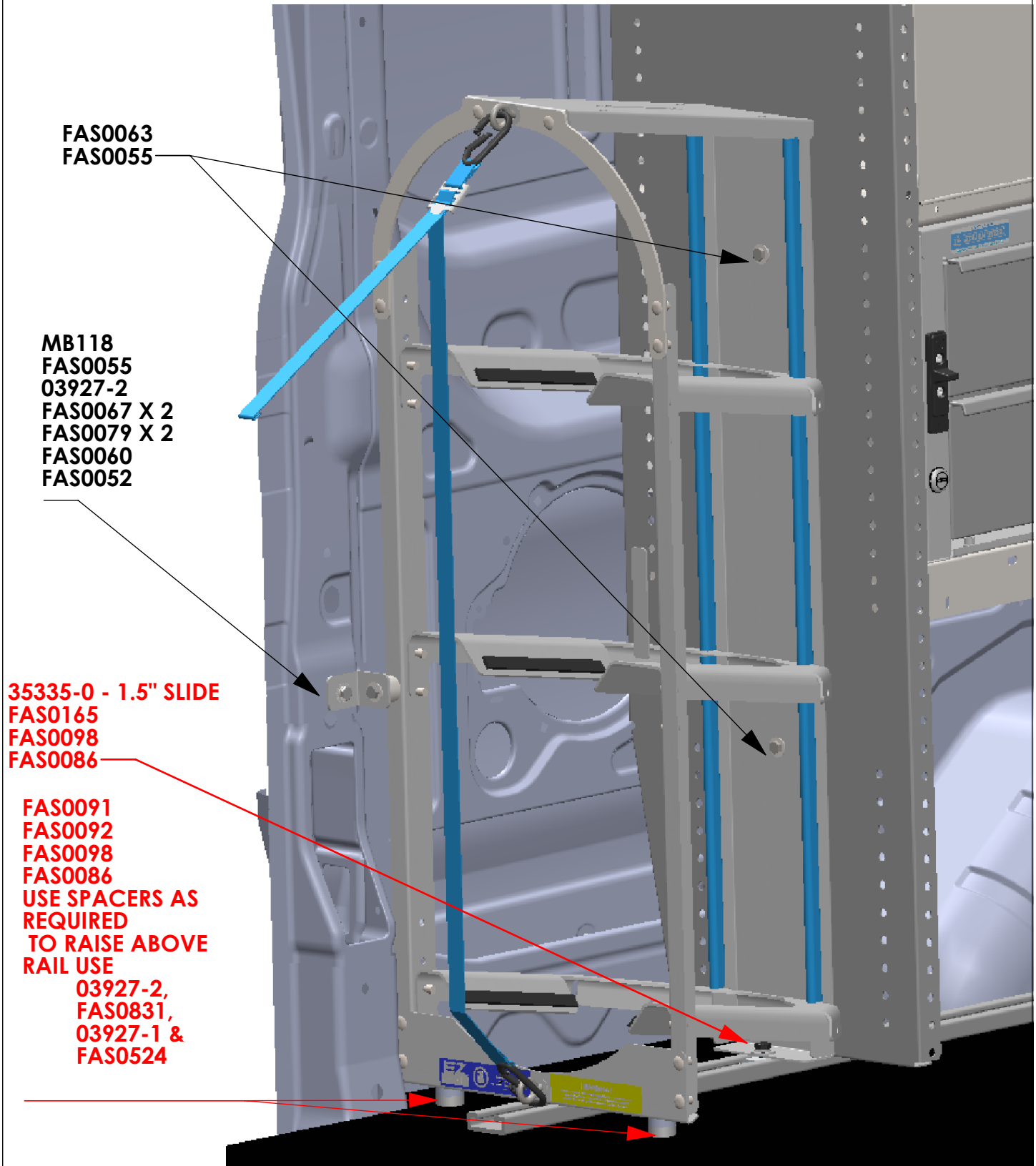
VEHICLE INSTALL BACK DOOR FACING INWARDS

MB118
MB120
FASTEN TO D-PILLAR
FAS0052
FAS0067
FAS0060
FAS0079
FASTEN MB118 TO MB120
FAS0078
FAS0067
FAS0055
FASTEN TO TANK RACK
FAS0063
FAS0067
FAS0055

MB118
FAS0078
FAS0067 X 2
FAS0055 X 2
FAS0063

3 PLACES
FAS0091 X1
FAS0092 X 1
FAS0086 X 1
FAS0098 X 1
USE SPACERS AS
REQUIRED



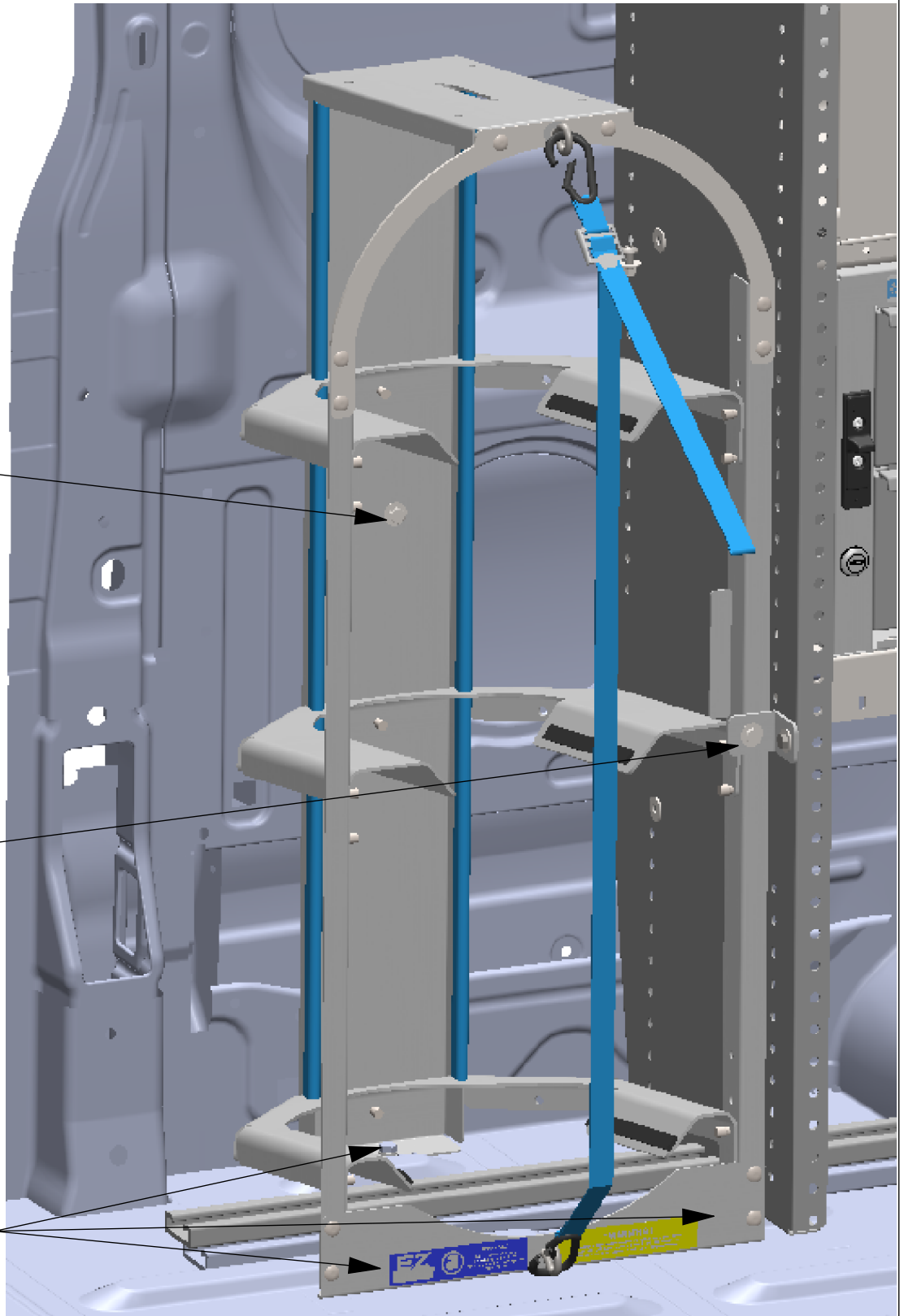
VEHICLE INSTALL SIDE DOOR FACING FORWARDS

VEHICLE INSTALL SIDE DOOR FACING INWARD

FAS0052 X 1
FAS0067 X 1
FAS0060 X 1
FAS0078 X 1

MB118
FAS0055 X2
FAS0067 X 2
FAS0078
FAS0063

3 PLACES
FAS0091 X1
FAS0092 X 1
FAS0086 X 1
FAS0098 X 1
USE SPACERS AS
REQUIRED



NOTE:

**SHELF END PANEL MUST BE AT
LEAST HALF THE HEIGHT OF THE
SECOND STACKED TANK RACK
IN ORDER TO STACK THEM. THIS
GIVES PROPER SECURING &
FASTENING ATTACHMENTS**

IF YOU WANT TO STACK THE RACKS YOU WILL
ALSO NEED BAGSTEPRD

BE SURE TO INSTALL
HARDWARE BRACKETS &
FASTENING PER RACK. SEE
PAGES 7-10 FOR
INSTALLATION

BAGSTEPRD
FAS0438 X 3
FAS0440 X 3

