



ADRIAN STEEL®

Cargo Management Solutions for Commercial Vehicles

TANK HOLDER, BLACK

PRODUCT WEIGHT

4.75 LBS

WIDTH X DEPTH X HEIGHT

07.70" X 05.86" X 23.11"

CAPACITY

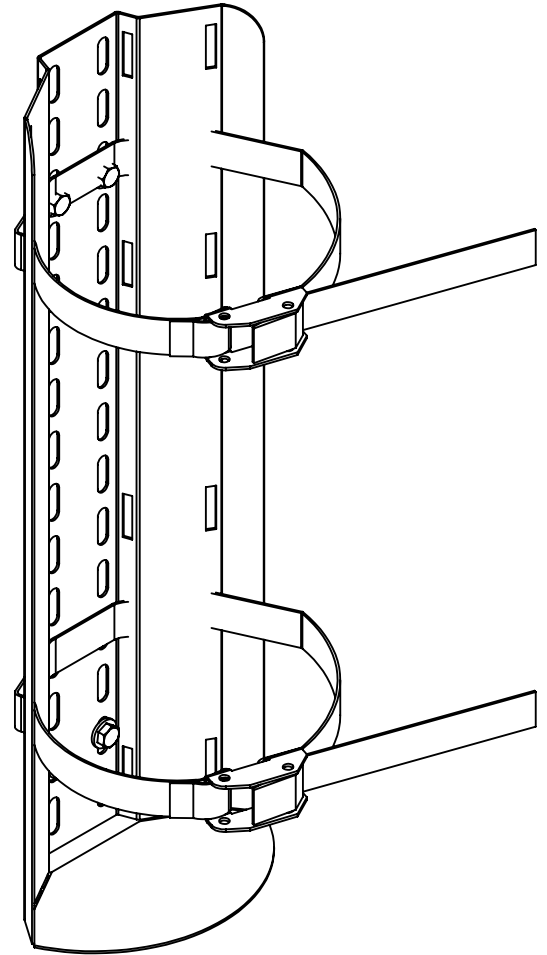
5" - 13" DIAMETER TANK

COLOR

BLACK

CATALOG NUMBER

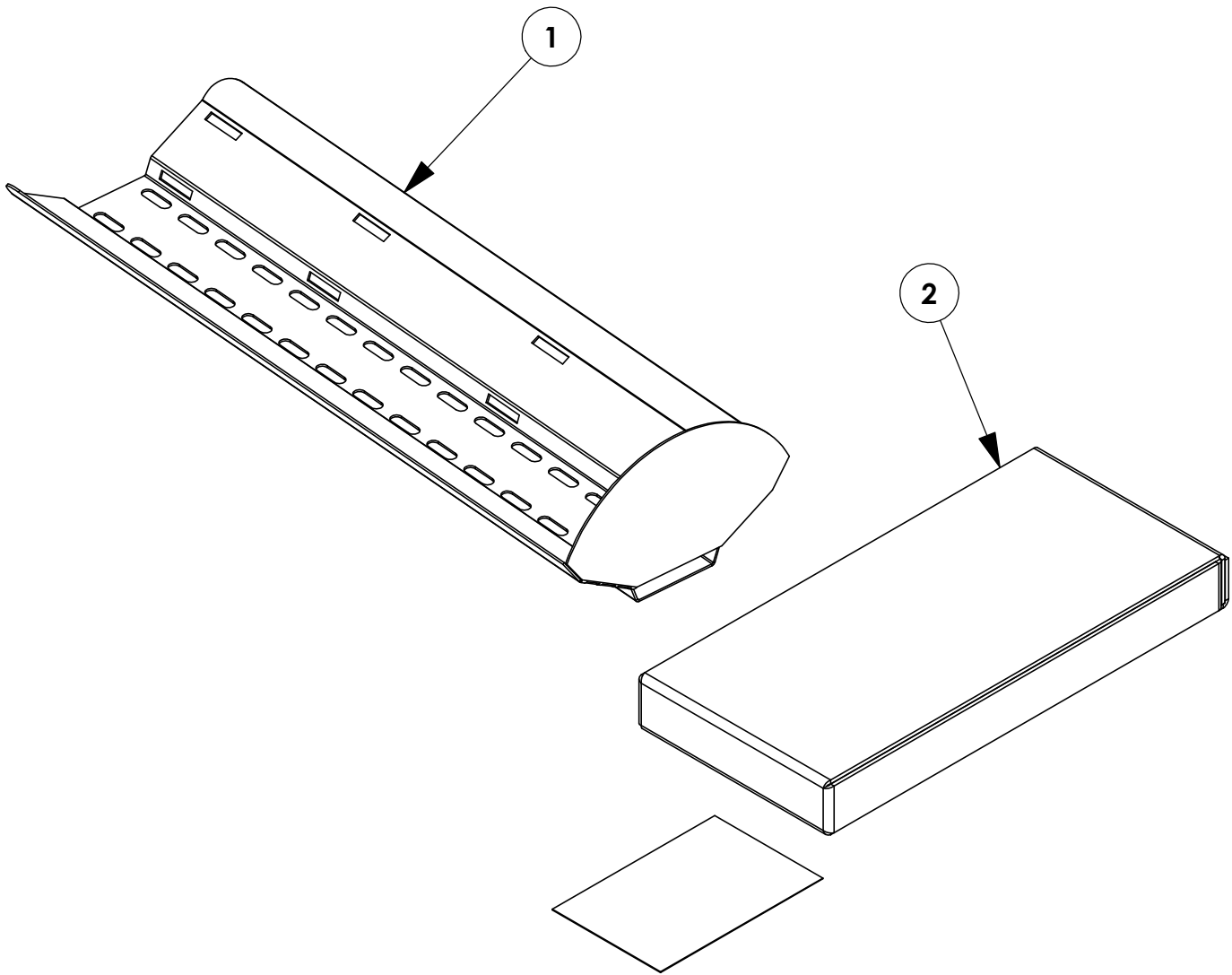
1TR



PRODUCT FEATURES

THE PRODUCT IS DESIGNED FOR CYLINDER TANKS FROM 5" UP TO 13" IN DIAMETER. IT CAN BE USED IN ANY VEHICLE AT THE FLOOR AND MOUNTED TO AN END PANEL, PARTITION, CART, ETC. IS COMPATILBE WITH NEXT GENERATION SHELVING. THE TANK NEEDS SECURED WITH BOTH STRAPS AND ATTACHED IN 4 PLACES AT THE BOTTOM AND SOMEWHERE IN THE TOP 1/3 OF THE HOLDER.

<i>INSTR. NUMBER</i> : 70786 <i>PART NUMBER</i> : 1TR <i>PART DESC.</i> : TANK HOLDER	<i>PG:</i>	<i>REV:</i>	ITEM NO.	PART NUMBER	DESCRIPTION	QTY.
	1	B	1	68672-B	TANK HOLDER, BLACK	1
			2	HDW69264	HDW KIT FOR TANK HOLDER	1
			6	E OXY CYLINDER	M6 OXY CYLINDER	1



GET TO KNOW THE VEHICLE - AT THE BEGINNING OF ANY INSTALLATION, CHECK THE LOCATION OF THE FUEL TANK, FUEL LINES, BRAKE LINES, HIGH VOLTAGE BATTERIES AND WIRING HARNESSSES TO AVOID INJURY OR PROPERTY DAMAGE FROM TOOL CONTACT.

SEAL ALL EXTERIOR HOLES - ALL INSTALLATION HOLES SHOULD BE SEALED WITH BUTYL TAPE OR SILICON TO PREVENT WATER AND EXHAUST GASES FROM ENTERING THE VEHICLE.

CONTROL DRILL DEPTH - TO AVOID DAMAGE TO THE VEHICLE, USE A DRILL STOP OR CLEARED STEP BIT WHEN DRILLING INSTALLATION HOLES.

ALWAYS ADD PRIMER - WHEN ADDING INSTALLATION HOLES BE SURE TO USE A SELF-ETCHING PRIMER TO PREVENT CORROSION, FASTENER FAILURE AND INJURY.

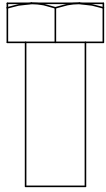
MOUNTING POINTS MUST HAVE METAL-TO-METAL CONTACT - USE PROVIDED MOUNTING SPACERS TO ACCOMMODATE FOR VEHICLE FEATURES, CARPET OR SUBFLOORS.

PROVIDE CLEARANCE FOR SPACERS - IF THE INSTALLATION VEHICLE CONTAINS A CARPET OR SUBFLOOR, USE A 1-3/16" DIAMETER CARPET CUTTER (P/N: 31183-0) AT ALL MOUNTING LOCATIONS TO OPEN UP ROOM FOR SPACERS.

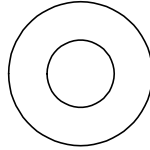
CHECK SPACER ORIENTATION - BE SURE THAT THE INDENT IN THE SPACER COVERS THE PLUSNUT HEAD; THIS ENSURES THE MOST METAL-TO-METAL CONTACT AND REDUCES VIBRATION.

PLUSNUT INSTALLATION - A PLUSNUT GUN IS RECOMMENDED FOR PLUSNUT INSTALLATION FOR ITS PRODUCTION SPEED. HOWEVER, A PLUSNUT SETTING TOOL CAN ALSO BE USED (P/N: 22200-0).

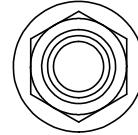
THRU-BOLT CLEARANCE - WHEN USING A THRU-BOLT AT ANY MOUNTING LOCATION, BE SURE THAT YOUR HOLE HAS 1/16" CLEARANCE.

FASTENERS USED**BAG69263**

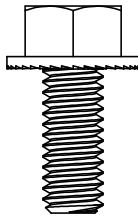
FAS0799
SCREW, HH
5/16-18X.75 SS
QTY: 04



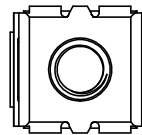
FAS0552
WASHER, FLAT
USS 5/16 SS
QTY: 04



FAS0861
NUT, HEX NLK FLG
5/16-18 SS
QTY: 04

BAGPEPACCMNT4

FAS0438
SCREW, HFLNG 5/16-18X.75ZP
QTY: 04



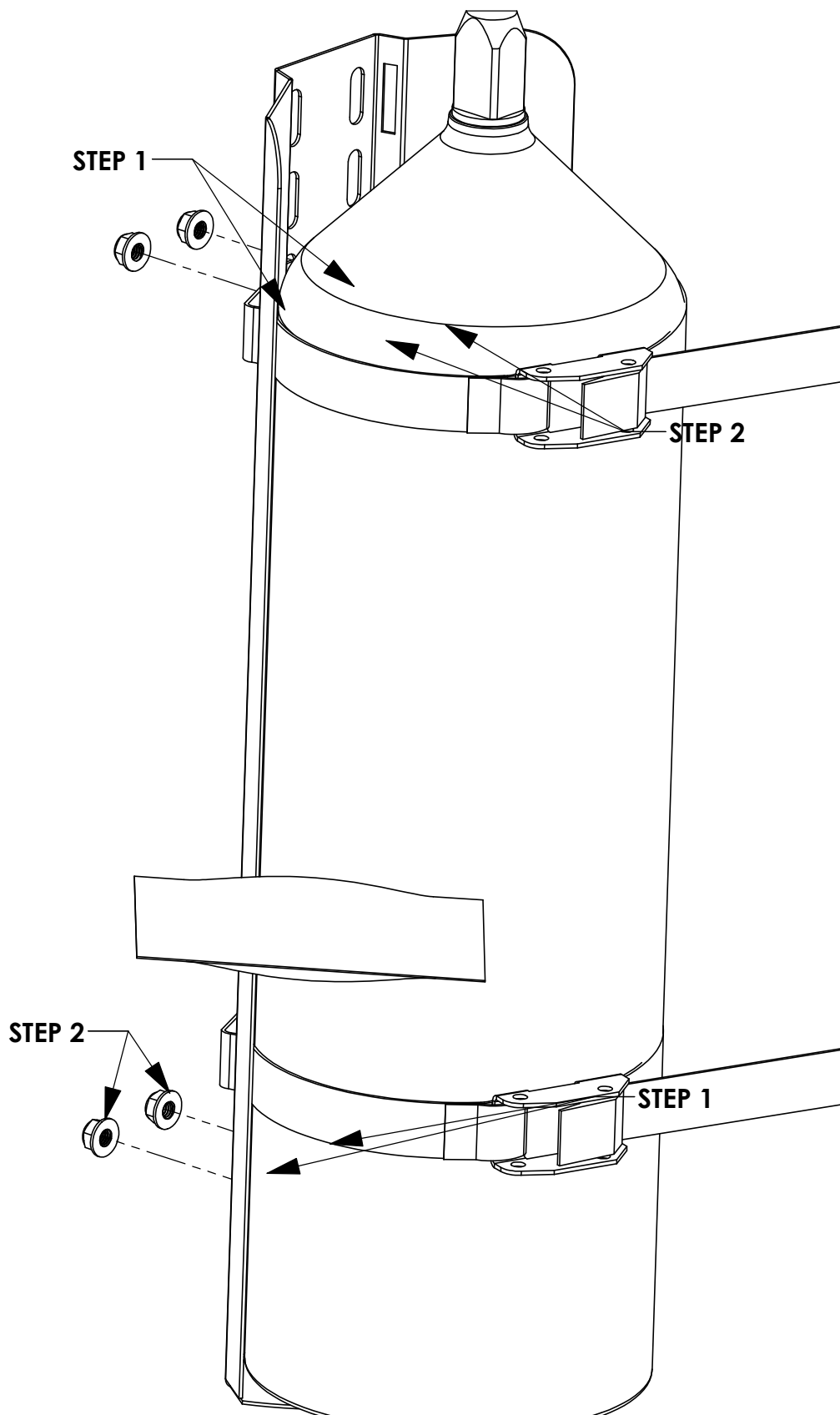
FAS0915
SNAP-IN NUT, 0.028-0.056"
QTY: 04

Page Intentionally Left Blank

STEP 1 INSTALL 1TR

STEP 1:
PLACE BRACKET
IN DISIRED AREA
ON PARTITION
OR END PANEL
AT FLOOR. MARK
HOLES & DRILL
WITH 11/32 DRILL
BIT

STEP 2:
FULLY TIGHTEN
FAS0799,
FAS0552, AND
FAS0861
(04 PLACES)
1/2 WRENCH
1/2 SOCKET



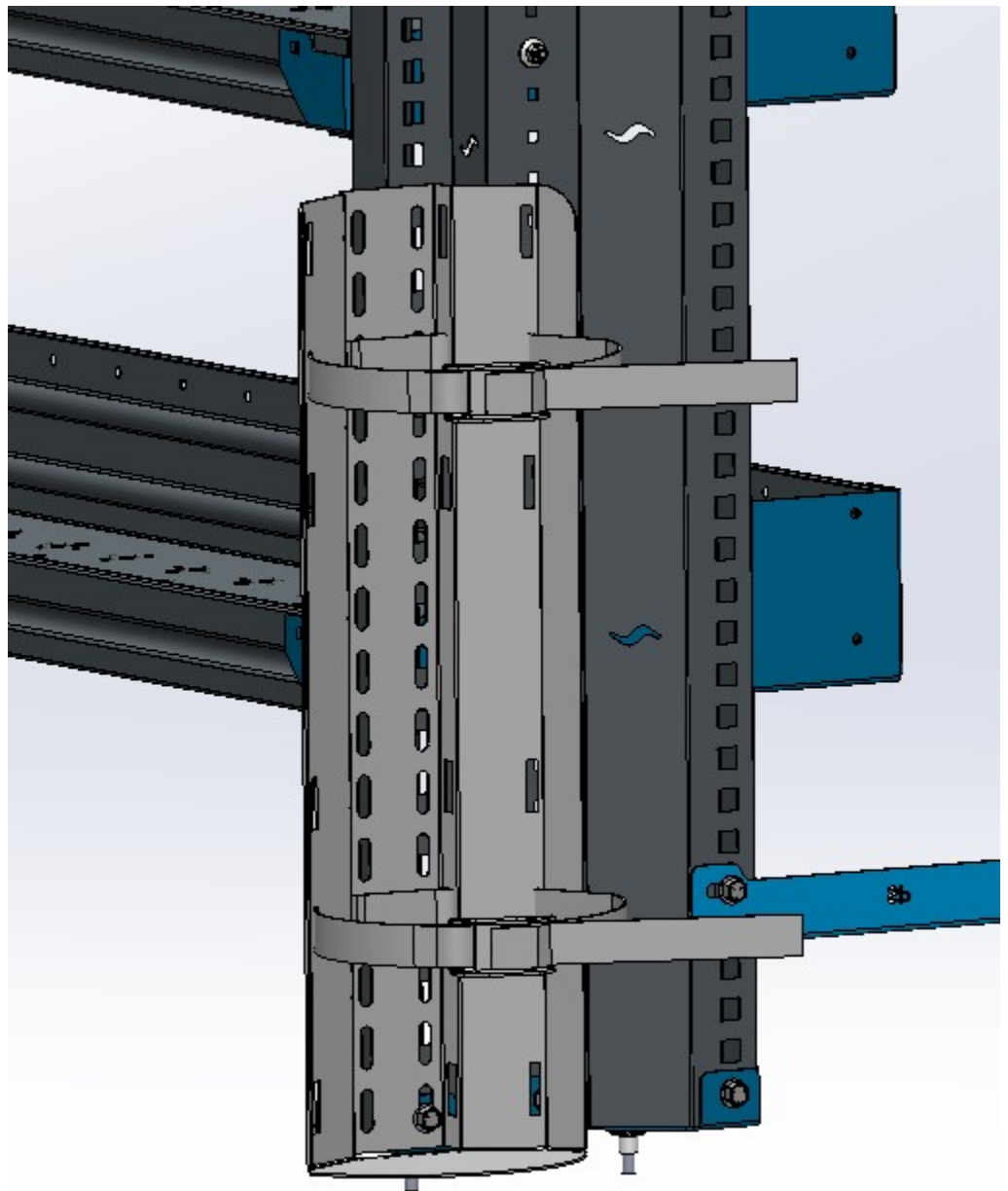
**FOR INSTALLATION ON NEW END PANEL, SEE NEXT PAGE. OTHERWISE,
INSTALLATION COMPLETE!!! MAKE SURE ALL FASTENERS ARE TIGHTENED**

STEP 1 INSTALL 1TR TO NEW ASC END PANEL

STEP 1:
PLACE BRACKET
IN DISIRED AREA
ON END PANEL
AT FLOOR. MARK
HOLES & INSERT
FAS0915 (QTY: 2
MINIMUM) INTO
END PANEL
SQUARE
CUTOUTS

STEP 2:
REALIGN
BRACKET AND
FASTEN TO END
PANEL USING
FAS0438 (QTY:2
MINIMUM) AND
FAS0915 IN
DESIRED
LOCATIONS.

STEP 3:
FULLY TIGHTEN
ALL FASTENERS
USING 1/2"
SOCKET OR
WRENCH



INSTALLATION COMPLETE!!! MAKE SURE ALL FASTENERS ARE TIGHTENED