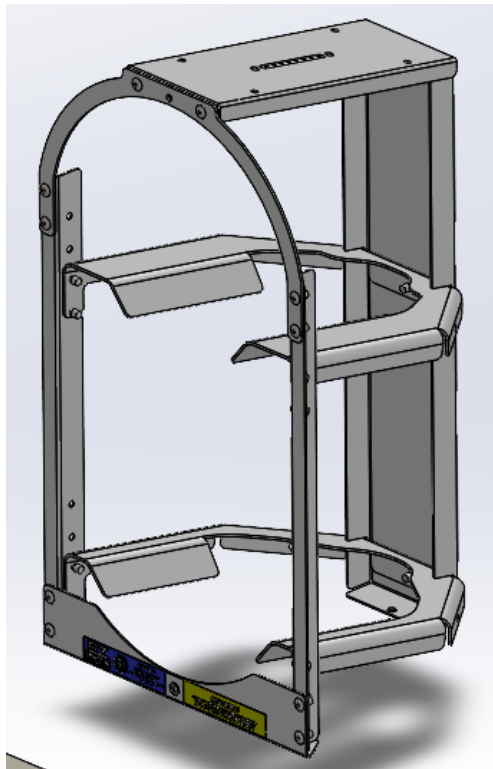




## EZLoad Tank Rack, 30lb. (1) 50lb. (1)



PRODUCT WEIGHT

**19.66 LBS**

WIDTH x DEPTH x HEIGHT

**14.41" x 12.82" x 26.05"**

CARRYING CAPABILITY

**1-30lb Tank, 1-50lb Tank**

COLOR

**GRAY**

CATALOG NUMBER

**130150TR**

### PRODUCT FEATURES

130150TR is designed to fit one thirty pound freon tank and one fifty pound freon tank.

Mounting Rack on an angle you will need

- Mercedes metris or Transit = HDWTRMMTR
- Sprinter or GM = HDWTRSPGM
- Transit Connect = HDWTRTC

When mounting over an AD Rail kit use provided spacers to level rack above the rail (no additional mounting kits are required).

TRSHELF30 (1" lip) & TR4SHELF30 (4" lip) are accessory shelves that mount to the top of this rack.

If you want to level the shelf so that it doesn't sit on the 10 degree angle you will also need TRSHLFBRKT.

**STACKING TANK RACKS** - You must use one of the flat topped rack options on the bottom. (130TR, 150TR, 230TR, 250TR. You will also need BAGSTEPRD).

Tank Racks can be stacked on top of one another for mid & high roof vehicles as long as the shelf end panel next to it is 1/2 or more the height of the second rack when stacked. The tank rack must be properly secured to the shelf end panel, tank rack, and wall of vehicle for both racks.

Some drilling may be required.

SEE PAGE 2 FOR APPLICATION NOTES AND ACCESSORIES, OTHER PRODUCTS THAT WORK WITH THIS UNIT.



**CATALOG NUMBER      130150TR**

***PRODUCT APPLICATION***

**The TR tank racks are designed to fit most all vehicles**

***ACCESSORIES THAT WILL WORK WITH THIS PRODUCT***

<b>CATALOG NUMBER</b>	<b>DESCRIPTION</b>
<b>TRSHELF30</b>	<b>TANK RACK 30LB, SHELF - 1" Lip Shelf</b>
<b>TR4SHELF30</b>	<b>TANK RACK 30LB, 4" SHELF - 4" Lip Shelf</b>
<b>DVTR4SHELF</b>	<b>TANK RACK, 4"SHELF DIVIDER - Works with TR4SHELF30</b>
<b>TRSHLFBRKT</b>	<b>TANK RACK SHELF BRACKET</b>
<b>BAGSTEPRD</b>	<b>To stack tank racks</b>
<b>HDWTRMMTR</b>	<b>ANGLED TANK RACK HARDWARE – Works for Mercedes Metris &amp; Transit</b>
<b>HDWTRSPGM</b>	<b>ANGLED TANK RACK HARDWARE – Works for Sprinter &amp; GM</b>
<b>HDWTRTC</b>	<b>ANGLED TANK RACK HARDWARE – Works for Transit Connect</b>

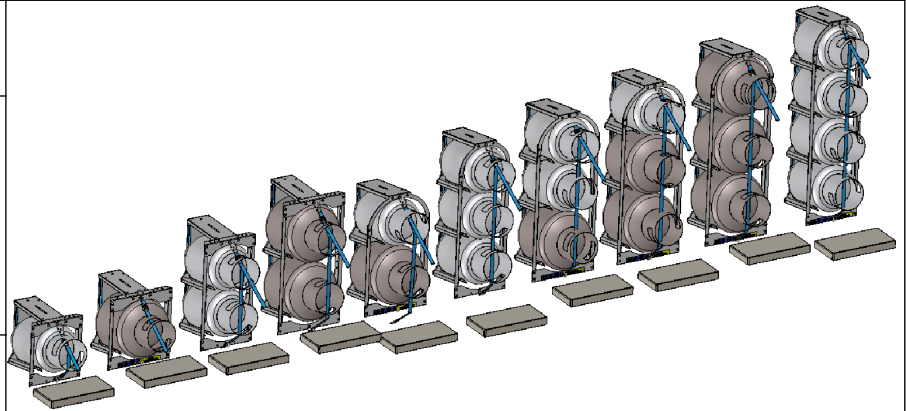
***SPECIAL APPLICATION NOTES***

INSTR. : 65482  
NUMBER

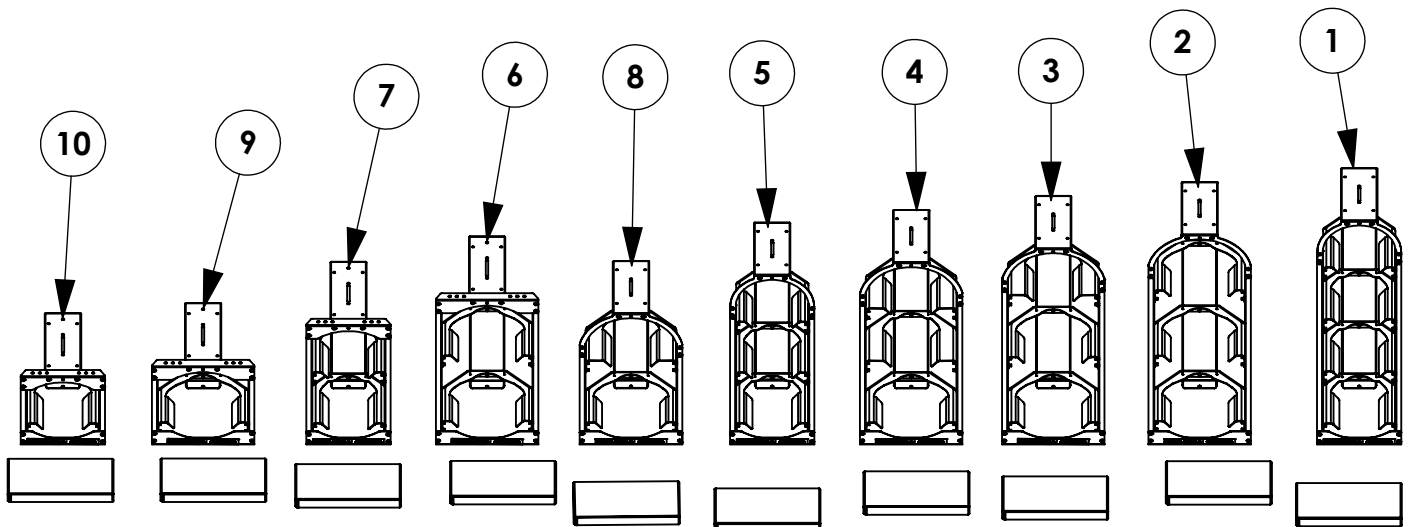
PG: 1  
REV: D

PART NUMBER • 130TR 350TR  
• 150TR 130250TR  
• 230TR 230150TR  
• 250TR 430TR  
• 330TR 130150TR

PART • TANK RACK, 1-30LB TANK  
DESC. • TANK RACK, 1-50LB TANK  
• TANK RACK, 2-30LB TANK  
• TANK RACK, 2-50LB TANK  
• TANK RACK, 3-30LB TANK  
• TANK RACK, 3-50LB TANK  
• TANK RACK, 1-30LB 2-50LB TANK  
• TANK RACK, 2-30LB 1-50LB TANK  
• TANK RACK, 4-30LB TANK  
• TANK RACK, 1-30LB 1-50LB TANK



ITEM NO.	PART NUMBER	DESCRIPTION	QTY.
1	430TR	TANK RACK 4-30lb TANKS	1
2	350TR	Tank Rack, 3-50lb Tanks	1
3	130250TR	TANK RACK, 1-30lb 2-50lb TANKS	1
4	230150TR	Tank Rack, 2-30lb 50lb Tanks	1
5	330TR	Tank Rack, 3-30lb Tanks	1
6	250TR	TANK RACK, 2-50lb TANKS	1
7	230TR	Tank Rack, 2-30lb Tanks	1
8	130150TR	TANK RACK, 30LB & 50LB TANK	1
9	150TR	TANK RACK, 1-50lb TANK	1
10	130TR	Tank Rack, 1-30lb Tank	1



**GET TO KNOW THE VEHICLE** - AT THE BEGINNING OF ANY INSTALLATION, CHECK THE LOCATION OF THE FUEL TANK, FUEL LINES, BRAKE LINES, HIGH VOLTAGE BATTERIES AND WIRING HARNESSSES TO AVOID INJURY OR PROPERTY DAMAGE FROM TOOL CONTACT.

**SEAL ALL EXTERIOR HOLES** - ALL INSTALLATION HOLES SHOULD BE SEALED WITH BUTYL TAPE OR SILICON TO PREVENT WATER AND EXHAUST GASES FROM ENTERING THE VEHICLE.

**CONTROL DRILL DEPTH** - TO AVOID DAMAGE TO THE VEHICLE, USE A DRILL STOP OR CLEARED STEP BIT WHEN DRILLING INSTALLATION HOLES.

**ALWAYS ADD PRIMER** - WHEN ADDING INSTALLATION HOLES BE SURE TO USE A SELF-ETCHING PRIMER TO PREVENT CORROSION, FASTENER FAILURE AND INJURY.

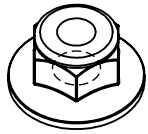
**MOUNTING POINTS MUST HAVE METAL-TO-METAL CONTACT** - USE PROVIDED MOUNTING SPACERS TO ACCOMMODATE FOR VEHICLE FEATURES, CARPET OR SUBFLOORS.

**PROVIDE CLEARANCE FOR SPACERS** - IF THE INSTALLATION VEHICLE CONTAINS A CARPET OR SUBFLOOR, USE A 1-3/16" DIAMETER CARPET CUTTER (P/N: 31183-0) AT ALL MOUNTING LOCATIONS TO OPEN UP ROOM FOR SPACERS.

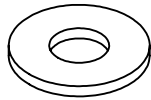
**CHECK SPACER ORIENTATION** - BE SURE THAT THE INDENT IN THE SPACER COVERS THE PLUSNUT HEAD; THIS ENSURES THE MOST METAL-TO-METAL CONTACT AND REDUCES VIBRATION.

**PLUSNUT INSTALLATION** - A PLUSNUT GUN IS RECOMMENDED FOR PLUSNUT INSTALLATION FOR ITS PRODUCTION SPEED. HOWEVER, A PLUSNUT SETTING TOOL CAN ALSO BE USED (P/N: 22200-0).

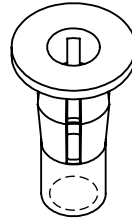
**THRU-BOLT CLEARANCE** - WHEN USING A THRU-BOLT AT ANY MOUNTING LOCATION, BE SURE THAT YOUR HOLE HAS 1/16" CLEARANCE.

**FASTENERS USED**

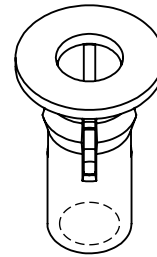
FAS0055  
1/4-20 ZP NLK  
FLG HEX NUT  
QTY: 7



FAS0124  
1/4 ZN  
FLATWASHER  
QTY: 2



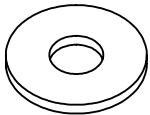
FAS0052  
1/4-20 PB DC  
PLUSNUT  
QTY: 2



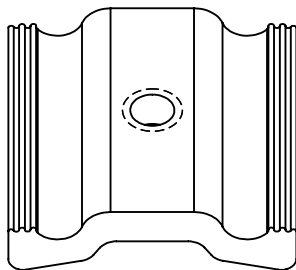
FAS0091  
5/16-18 PB DC  
PLUSNUT  
QTY: 3



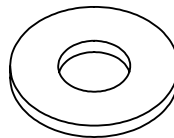
FAS0060  
1/4 ZP  
SPLIT LCK WASHER  
QTY: 2



FAS0067  
1/4 ZP  
FLAT WASHER  
QTY: 7



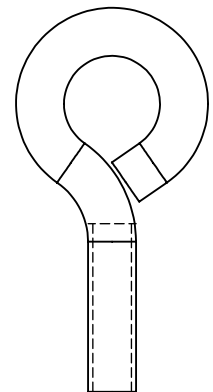
35335-0  
1.5" AD SLIDE  
QTY: 1



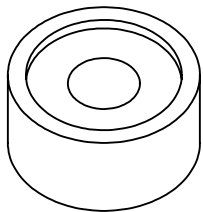
FAS0086  
5/16 ZP  
FLAT WASHER  
QTY: 4



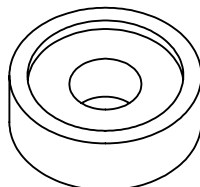
FAS0165  
5/16-18X.62 ZN  
HH SCREW  
QTY: 1



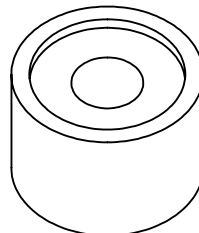
FAS0050  
1/4-20X.5X.88 ZP  
EYEBOLT  
QTY: 2



FAS0831  
1/2 ZP  
FLR SPACER  
QTY: 3



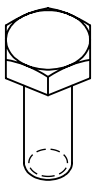
03927-1  
11/32 ZP  
FLR SPACER  
QTY: 3



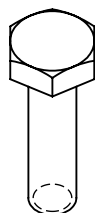
03927-2  
11/16 ZP  
FLR SPACER  
QTY: 5



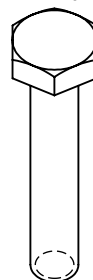
FAS0098  
5/16 ZP  
SPLIT LCK WASHER  
QTY: 4



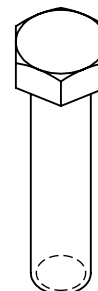
FAS0063  
1/4-20X.75 G5 ZN  
HH SCREW  
QTY: 3



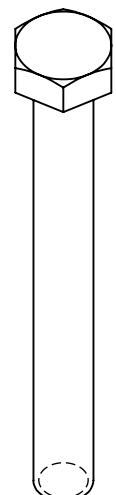
FAS0078  
1/4-20X1 G8 ZP  
HH SCREW  
QTY: 2



FAS0079  
1/4-20X1.5 G8 ZP  
HH SCREW  
QTY: 4

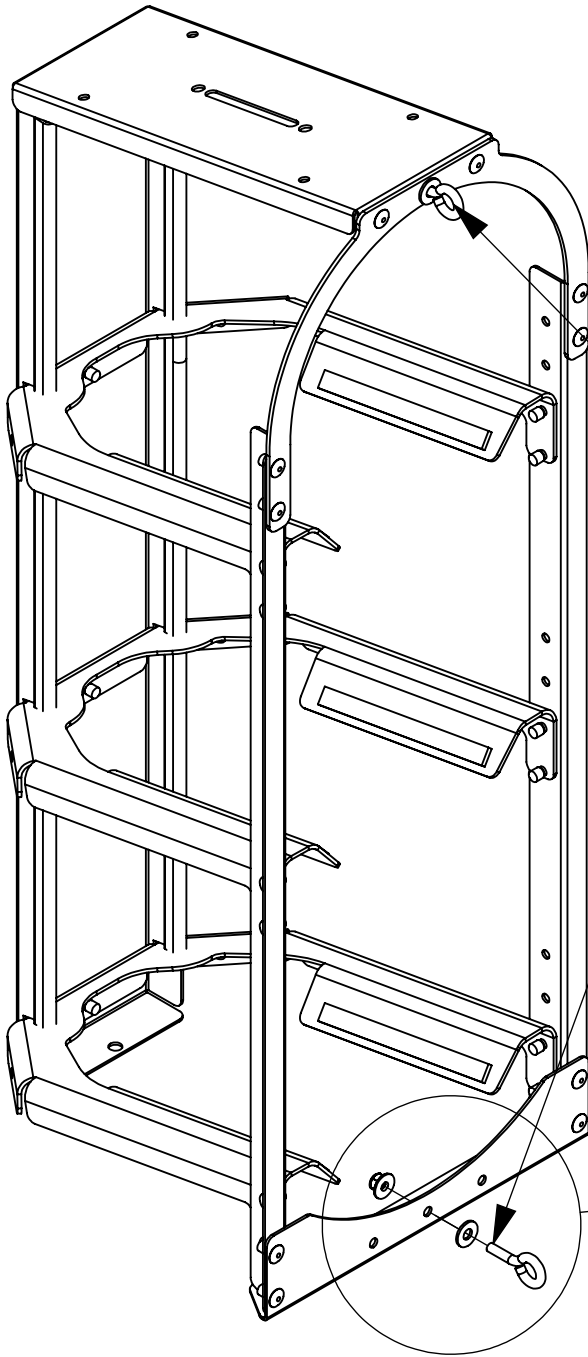


FAS0092  
5/16-18X1.5 G8ZP  
HH SCREW  
QTY: 3

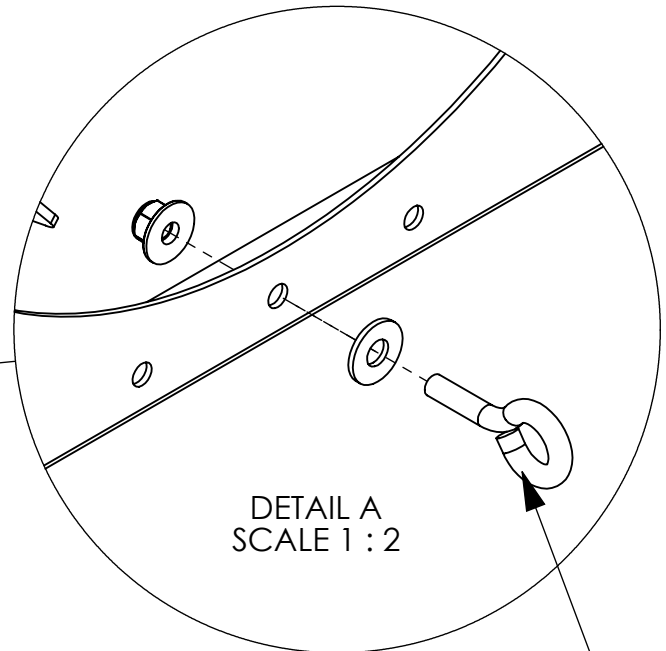


FAS0524  
5/16-18X3 G5 ZP  
HH SCREW  
QTY: 3

**BEGIN ASSEMBLY**  
**STEP 1 - INSTALL EYEBOLTS**



**EYELET INSTALLED VERTICALLY  
FOR EASY STRAP INSTALL**



DETAIL A  
SCALE 1 : 2

**USE FAS0050, FAS0124 AND FAS0055  
(2 PLACES ALL RACKS)  
PHILLIPS SCREW DRIVER  
7/16 WRENCH**

**STEP 3 - ASSEMBLE PINCHWELD**

**TRIM PINCHWELD WITH  
TIN SNIPS TO FIT RACK  
LENGTH**

**INSTALL PINCHWELD**

**10" PINCHWELD-44175**

2 PLACES - 130TR

4 PLACES - 230TR

6 PLACES - 330TR

4 PLACES - 230150TR

2 PLACES - 130250TR

8 PLACES - 430TR

**13" PINCHWELD-57974**

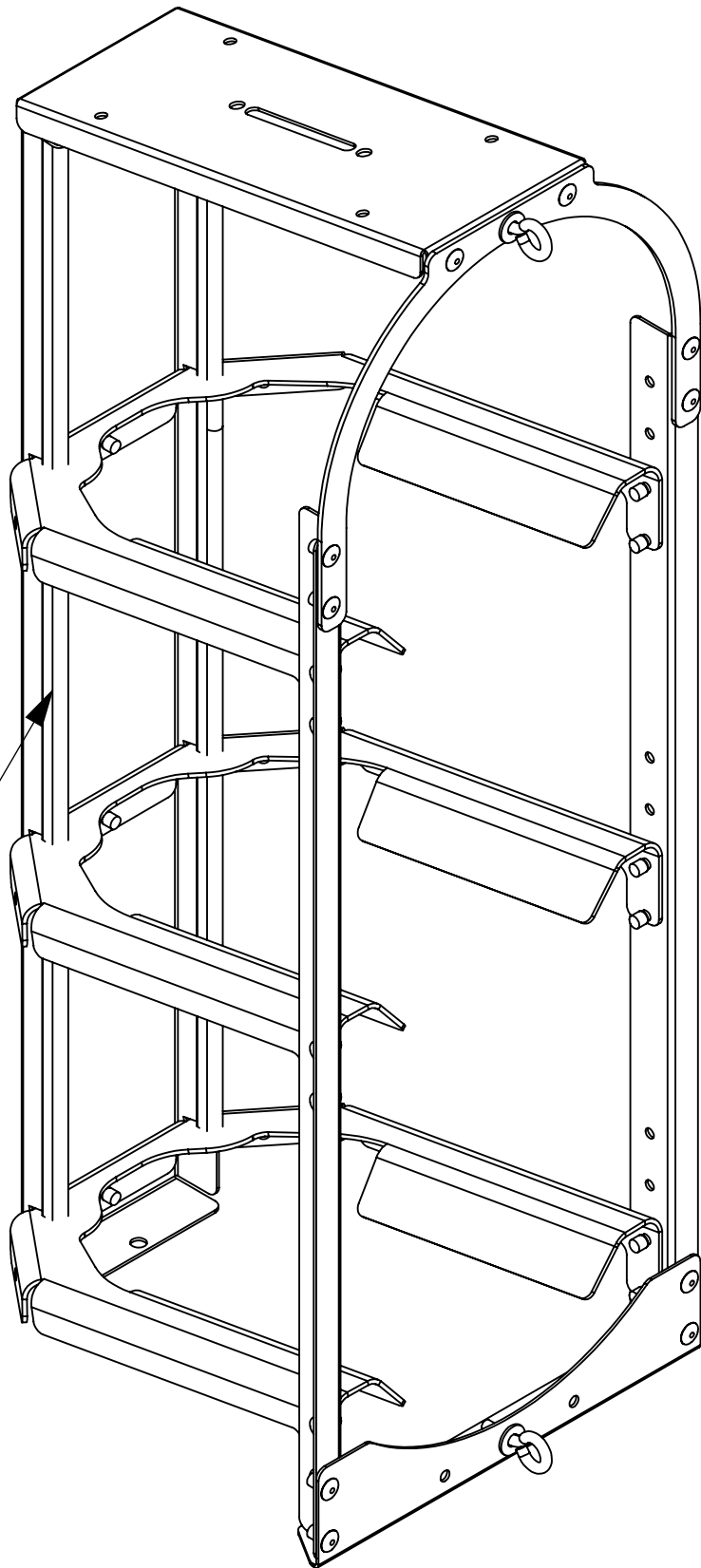
2 PLACES - 150TR

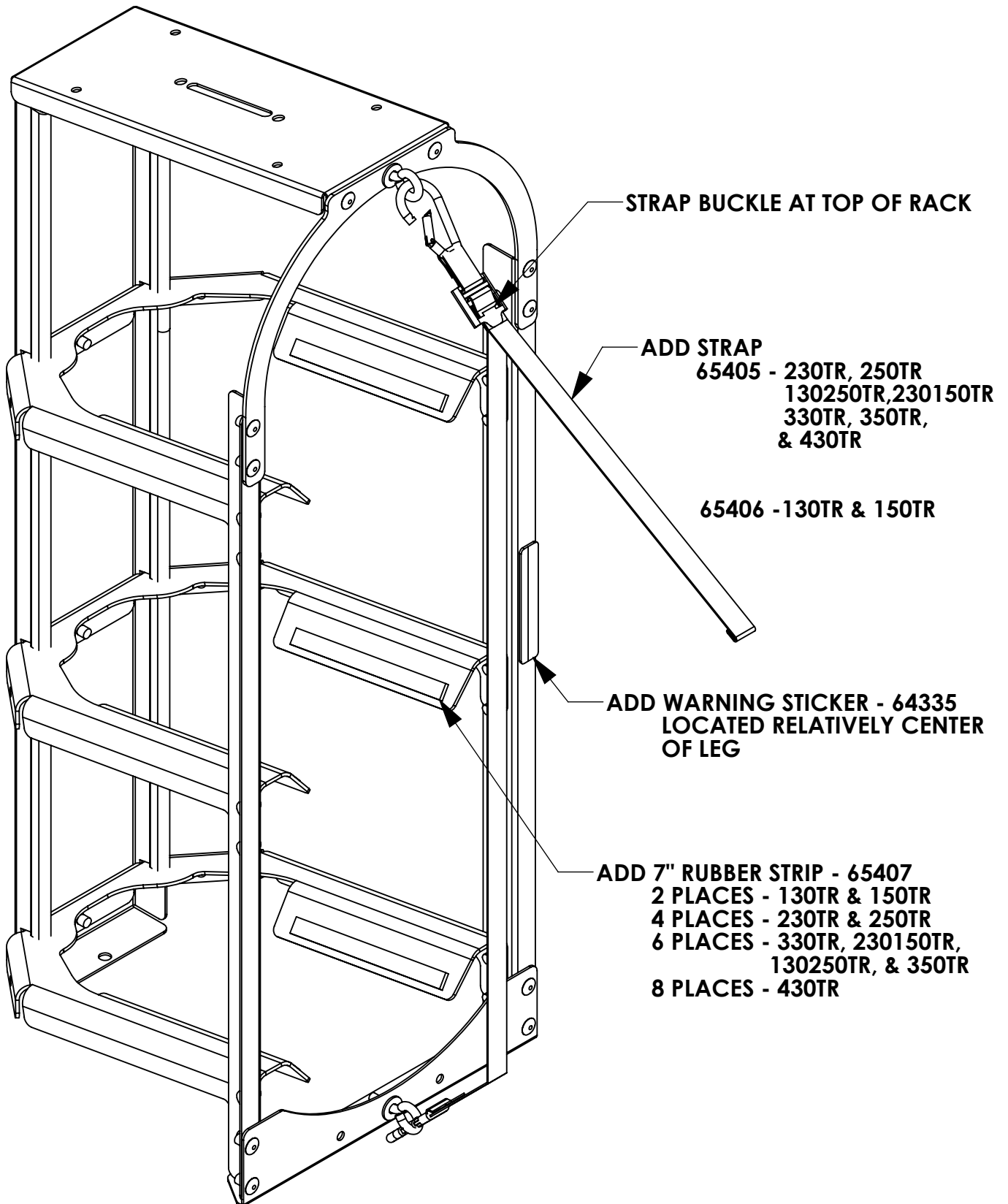
4 PLACES - 250TR

2 PLACES - 230150TR

4 PLACES - 130250TR

6 PLACES - 350TR



**STEP 4 - ASSEMBLE 7" RUBBER STRIP AND STRAP**



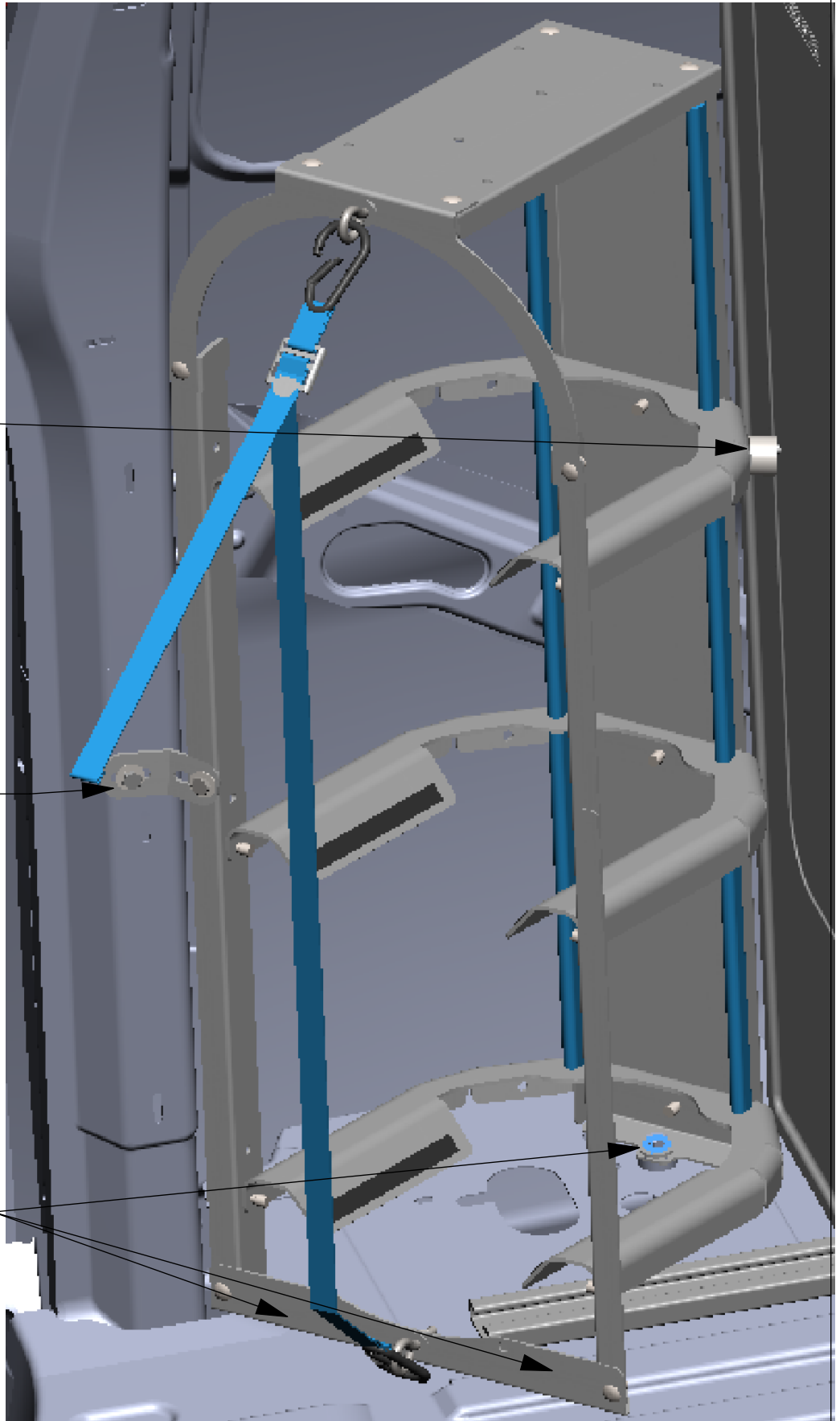
# ***MOUNTING TANK RACK IN REAR OF VEHICLE AT 45 DEGREE ANGLE***

**NOTE: PROMASTER  
136WB CANNOT BE  
MOUNTED AT A 45  
DEGREE ANGLE**

**FASTEN TO END PANEL  
03927-2  
FAS0079  
FAS0067  
FAS0055**

**WING BRACKET 46768-G  
FAS0052  
FAS0067  
FAS0060  
FAS0079**

**3 PLACES  
FAS0092  
FAS0098  
FAS0086  
USE SPACERS AS  
REQUIRED**

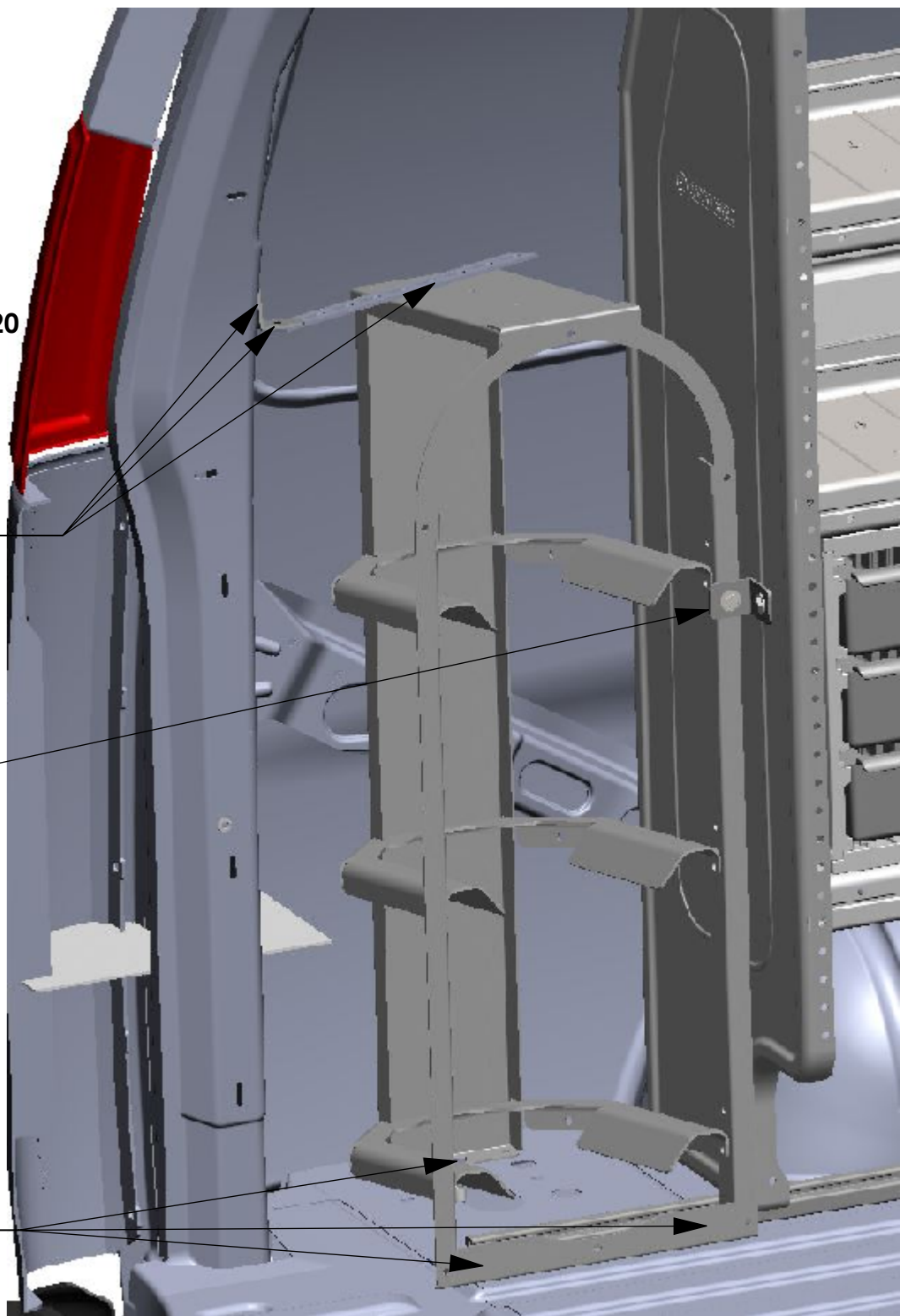


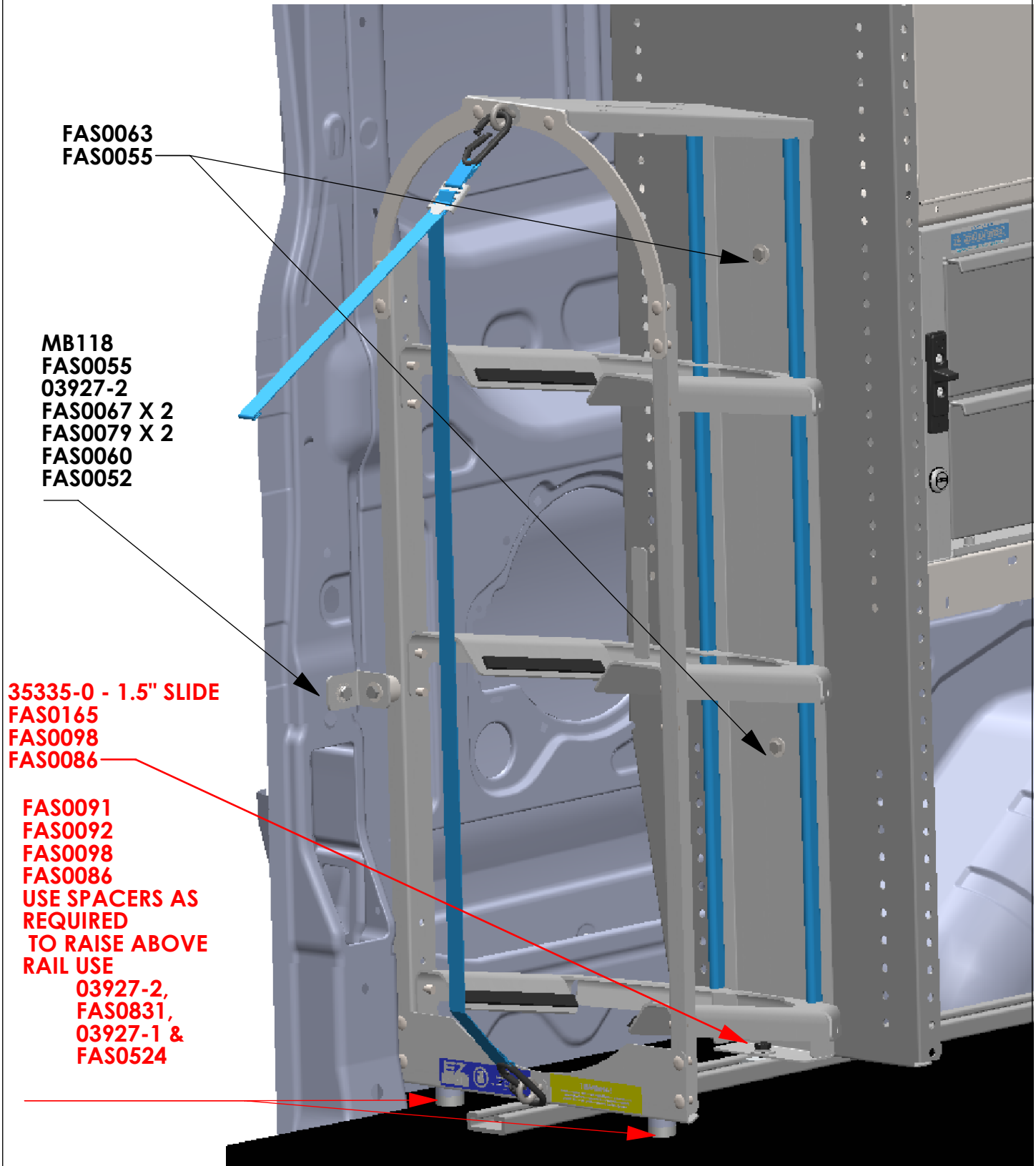
# **VEHICLE INSTALL BACK DOOR FACING INWARDS**

MB118  
MB120  
FASTEN TO D-PILLAR  
FAS0052  
FAS0067  
FAS0060  
FAS0079  
FASTEN MB118 TO MB120  
FAS0078  
FAS0067  
FAS0055  
FASTEN TO TANK RACK  
FAS0063  
FAS0067  
FAS0055

MB118  
FAS0078  
FAS0067 X 2  
FAS0055 X 2  
FAS0063

3 PLACES  
FAS0091 X1  
FAS0092 X 1  
FAS0086 X 1  
FAS0098 X 1  
USE SPACERS AS  
REQUIRED



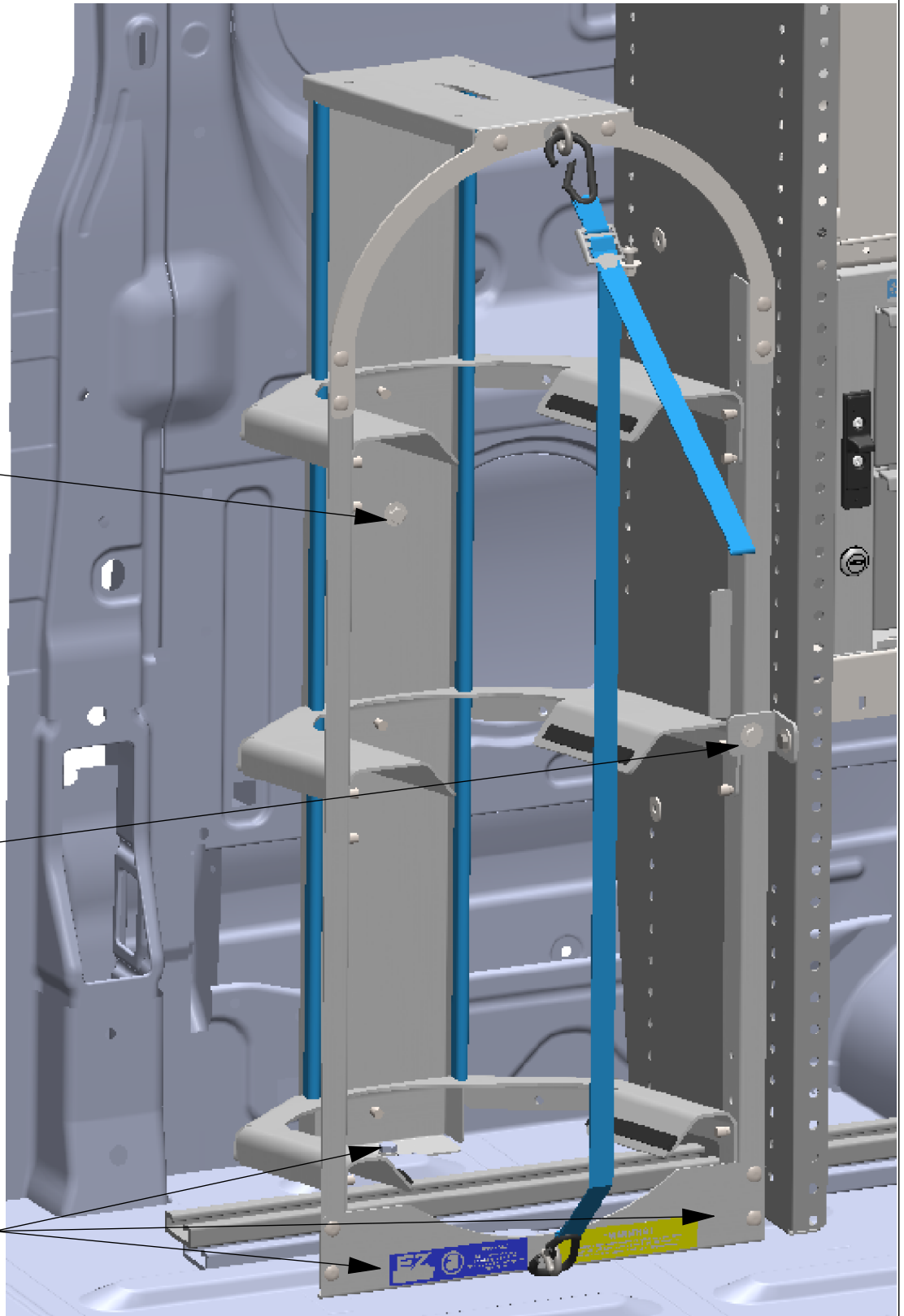
**VEHICLE INSTALL SIDE DOOR FACING FORWARDS**

**VEHICLE INSTALL SIDE DOOR FACING INWARD**

FAS0052 X 1  
FAS0067 X 1  
FAS0060 X 1  
FAS0078 X 1

MB118  
FAS0055 X2  
FAS0067 X 2  
FAS0078  
FAS0063

3 PLACES  
FAS0091 X1  
FAS0092 X 1  
FAS0086 X 1  
FAS0098 X 1  
USE SPACERS AS  
REQUIRED



**NOTE:**

**SHELF END PANEL MUST BE AT LEAST HALF THE HEIGHT OF THE SECOND STACKED TANK RACK IN ORDER TO STACK THEM. THIS GIVES PROPER SECURING & FASTENING ATTACHMENTS**

IF YOU WANT TO STACK THE RACKS YOU WILL ALSO NEED BAGSTEPRD

BE SURE TO INSTALL  
HARDWARE BRACKETS &  
FASTENING PER RACK. SEE  
PAGES 7-10 FOR  
INSTALLATION

BAGSTEPRD  
FAS0438 X 3  
FAS0440 X 3

