

CARGO TRAILER EQUIPMENT



ADRIAN STEEL®
Cargo Management Solutions for Commercial Vehicles



Adjustable Shelving & Storage Modules



The HD (heavy-duty) Series Contains five adjustable shelves. Shelf gussets, end panel braces and full floor-rail provide extra strength.

MODEL	OVERALL SIZE	OPEN SHELF SPACE
HD-32WPT	32" x 60" x 14"	15.56 sq ft
HD-42WPT	42" x 60" x 14"	20.42 sq ft
HD-52WPT	52" x 60" x 14"	25.28 sq ft



JD (Jumbo Deep) Series Features channel reinforced shelf bottoms, 4" deep shelf lips, and square end panels.

MODEL	OVERALL SIZE	OPEN SHELF SPACE
JD42WPT	42" x 60" x 18"	15.75 sq ft
JD52WPT	52" x 60" x 18"	19.50 sq ft
JD48WPT	48" x 60" x 24"	24 sq ft
JD60WPT	60" x 60" x 24"	30 sq ft



MD4842T – Adjustable Shelving Unit and Work Bench

- Shelving and workbench built into one.
- Features two deep shelves measuring 24"D x 48"W with 4" deep containment lips.
- The B-leg design allows for trailers with in-board wheel wells.
- Shelves can be inverted to add drawer units.
- Measures 42"H x 48"W x 24"D.

Note: Plywood work top not included.



- Large Capacity
- Secure Storage



CL1860 Storage Locker

Features two hinged doors with a two point locking system to secure stored items, three bolt in shelves and a bolt in steel back panel. Shown with optional parts tray. Measures 60"H x 18"D x 36"W.



MD601T Drawer/Cabinet Module

Features two large lockable cabinets both with an adjustable shelf, and one 3-drawer combo with dividers in each of the two shallow drawers. Measures 18" W, 56" H, 12" D.



MD602T Drawer/Tray Module

Features three lockable 3-drawer units and a parts tray on top with a 2" lip.

Measures 18" W, 56" H, 12" D.



MD603T Drawer/Cabinet Module

Contains one large lockable cabinet with an adjustable shelf, one 3-drawer combo, one 3-drawer medium and a parts tray with a 2" lip for added storage.

Measures 18" W, 54" H, 12" D.



MD604T Drawer/Cabinet Module

Features four lockable cabinets and eight shallow drawers. Cabinets feature an open side and combine to form a 36" wide compartment..

Measures 36" W, 56" H, 12" D.



MD605T Drawer/Cabinet Module

Combines two lockable cabinets with drawer units and a large 36" parts tray with a 2" lip across the top.

Measures 36" W, 54" H, 12" D.



MD701T Drawer Cabinet Module

Features four locking cabinets, top tray, and four medium drawers.

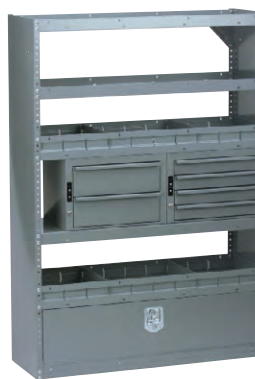
Measures 36" W, 58" H, 12"/18" D.



MD702T Drawer Cabinet Module

Combines top tray, two locking cabinets, eight small and eight large drawers.

Measures 36" W, 60" H, 12"/18" D.



MD704T Storage Unit

Features lockable door kit cover, divided shelf storage, four small and two medium drawers.

Measures 42" W, 60" H, 14" D.



MD708T Storage Unit

Combines a masonite work top with a mix of small and medium drawer units. Includes (2) #8, #9, #19, #919, #54.

Measures 42" W, 38" H, 14/18" D.

Cargo Trailer Accessories



Tote Trays and Cases

Measures:

19-3/4"W x 20-1/8"H x 13-3/8"L

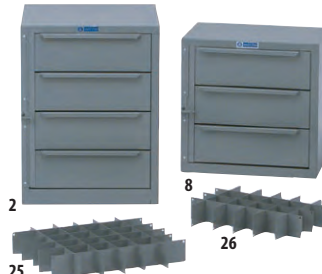
MODEL	DESCRIPTION
SPT-4	Combo Totes and Rack Steel Trays (2) Poly Cases (2)
SPT-4P	Poly Totes and Rack Poly Cases (4)
SPT-4S	Steel Totes and Rack Steel Trays (4)



Drawer Units –Lock 'n Latch System

18"W x 12"H x 12"L steel cabinet with composite drawers. Features Heavy-Duty drawer glides.

MODEL	DESC. & DRAWER SIZE (QTY.)
19	2 Drawer Medium 16"W x 5"D x 11-1/2"L (2)
919	3 Drawer Combo 16"W x 2-1/2"D x 11-1/2"L (2) 16"W x 5"D x 11-1/2"L (1)
9	4 Drawer Shallow 16"W x 2-1/2"D x 11-1/2"L (4)
27	Divider Kit



Drawer Units – Locking Hinge & Hasp

#2 measures 18"W x 24"H x 18"L

#8 measures 18"W x 18"H x 12"L

MODEL	DESC. & DRAWER SIZE (QTY.)
8	3 Drawer Medium 16"W x 5"D x 11-1/2"L (3)
2	4 Drawer Medium 16"W x 5"D x 17-1/2"L (4)
25	Divider Kit for #2
26	Divider Kit for #8



Drawer Components

High-impact polymer construction with drawer retention stops.

MODEL	DESC. & CABINET SIZE
DC6	Base 3 drawer narrow model 6"W x 12"H x 12"D
DC12	Base 3 drawer wide model 12"W x 12"H x 12"D

Interlocking feature allows up to 2 units stacked vertically or multiple units horizontally.
5lb. weight capacity per drawer.



Shelf Cabinets can be used free standing or are perfect for stacking with our lockable drawer units.

MODEL	DESC. & CABINET SIZE
1	Shelf Cabinet 18"W x 22"H x 18"L
12	Shelf Cabinet Open Side 18"W x 22"H x 12"L
1A	Optional Shelf for #1
12A	Optional End Panel for #12



Cabinet Lockers

Lockers feature a 46" high storage space with removable shelves.

MODEL	DESC. & CABINET SIZE
CL1446R	Cabinet Locker Full Door 18"W x 46"H x 14"D
CL1446D	Cabinet Locker Short Door 18"W x 46"H x 14"D



Bin and Rest Assembly

Portable blue bins are great to take to the job site. The rest assembly is 51" long and can accommodate three #22 or six #24 bins per row. The spring loaded lock bar holds bins in place. Add dividers to the blue bins with the #23 plastic divider.

29193-0 Two Rows - 51" Rest Assembly for Trailers



UH5T Utility Hooks for Z Rail

Hang shovels, extension cords, rakes and brooms on this versatile utility hook. The powder coated steel hook easily slips onto Adrian's Z-Rail without the need for fasteners. UH5T utility hooks are sold individually.



Trailer Installation Fastener Kits

Includes z-rail for mounting to the wall, floor plates for mounting to the floor and fasteners for both. All trailer shelving units and modules include the necessary fastener kits. Additional fastener kits can be ordered.

MODEL	DESCRIPTION
TRK18	Trailer Fastener Kit, 18"
TRK32	Trailer Fastener Kit, 32"
TRK36	Trailer Fastener Kit, 36"
TRK42	Trailer Fastener Kit, 42"
TRK48	Trailer Fastener Kit, 48"
TRK52	Trailer Fastener Kit, 52"
TRK60	Trailer Fastener Kit, 60"

ALUMINUM LOCK BOX

- Designed to mount on the trailer floor facing out the side or rear door.
- Aluminum construction with powder coat black paint.
- Gas shock eases opening and closing of the large lid.
- The large lock will accommodate a padlock or hockey puck style lock (not included.)
- Stores valuable tools and paperwork.
- Accessible and easy to use.

LKB1 Aluminum Lock Box
20" W, 14.5" H, 25" D



DON'T LET ALL THAT SPACE INSIDE YOUR CARGO TRAILER INTIMIDATE YOU. Turn to Adrian Steel for ideas on how to best maximize the space inside your cargo trailer. Trade packages are designed for different vocations, with trade specific equipment like tank racks and small parts storage. Trade packages are thought starters, designed to give you ideas to combine the Adrian Steel shelving, cabinets, drawers and modules that fit your specific needs.



A Adjustable shelving is 60" high, and is available in depths up to 24" and as wide as 60". Easily add drawer units and locking door kits.

B Drawer Components are essential for the storage of small parts and fasteners. DC Units are available in 6" and 12" widths, 12" deep and 12" high.

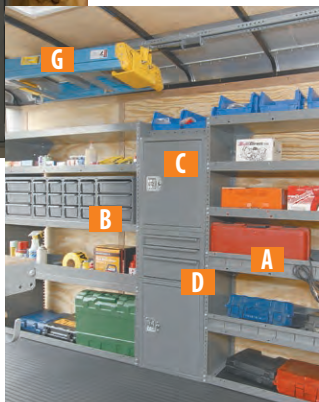
C Locking Cabinets provide secure storage for jobsite tools. The compressed T-Handle does not protrude into the aisle.

D Lock and Latch Drawer Units are great for storing those small parts and tools.

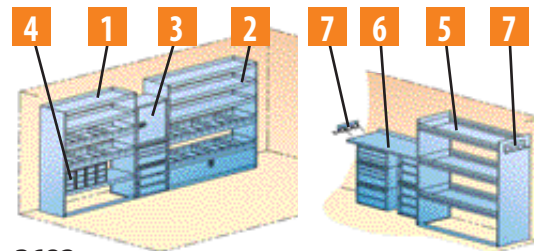
E Storage Locker secures large items with a two-point locking system.

F Adjustable shelving unit with work bench top provides a surface inside the trailer from which you can work.

G Store ladders safe and dry inside the trailer and off the floor with the LK8 Ladder Keeper.



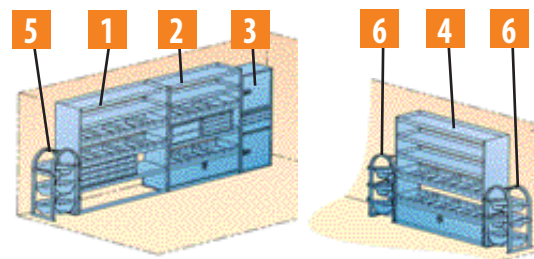
H Portable plastic bins organize small parts and are easy to take to the jobsite.



3682 BUILDER/REMODELER PACKAGE

ITEM	MODEL	DESCRIPTION	QTY.
1	HD-42WPT	Adjustable HD Shelving Unit	1
2	MD707T	KD Storage Unit	1
3	MD603T	Drawer Cabinet Module	1
4	DS46012	12 Drawer System	1
5	JD42WPT	Jumbo Adjustable Shelving Unit	1
6	MD708T	Work Bench Module	1
7	TA1	Hook Bar	2

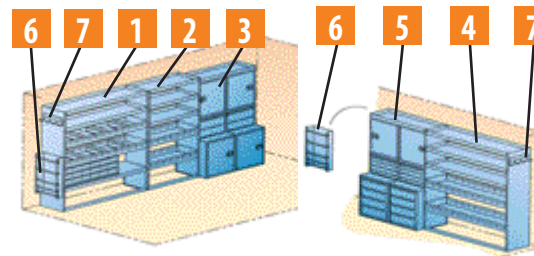
Note: Interior designed for 12' long trailers.



3683 PLUMBING, HEATING, A/C REPAIR PACKAGE

ITEM	MODEL	DESCRIPTION	QTY.
1	MD706T	KD Storage Unit	1
2	MD704T	KD Storage Unit	1
3	MD601T	Drawer Cabinet Module	1
4	MD707T	KD Storage Unit	1
5	WTR130250	Three Tank Rack	1
6	WTR230150	Three Tank Rack	2

Note: Interior designed for 12' long trailers.



3684 UTILITY/GAS & ELECTRIC PACKAGE

ITEM	MODEL	DESCRIPTION	QTY.
1	MD706T	KD Storage Unit	1
2	HD-32WPT	HD Adjustable Shelving Unit	1
3	MD701T	Drawer Cabinet Module	1
4	HD-52WPT	HD Adjustable Shelving Unit	1
5	MD702T	Drawer Cabinet Module	1
6	WRH5	5 Bar Wire Reel Holder	2
7	TA1	Hook Bar	2

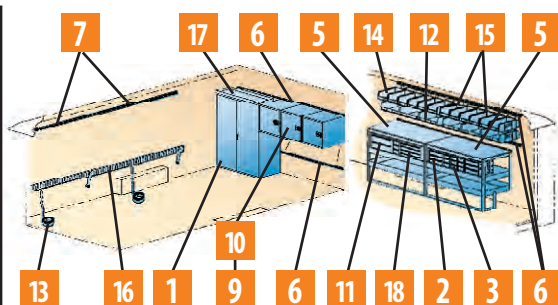
Note: Interior designed for 12' long trailers.

Why Adrian Steel Trailer Products?

- Holds up to stress when trailer is in motion.
- Stronger than wood.
- Secure storage for valuable parts and tools.
- Modular design allows you to build the interior to fit your business needs.
- Commercial grade - stands up to many years of wear & tear.
- Have a work-ready trailer faster.

NOTES:

- Interiors designed for 12' long trailers.
- Floor mat not currently available.
- Trailers with wheel wells may require equipment modification. Please contact your local Adrian Steel distributor.



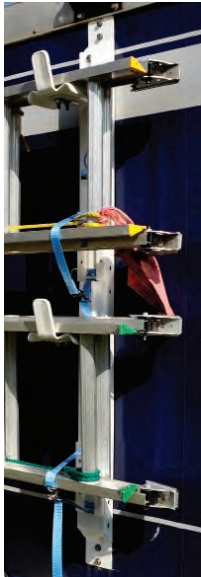
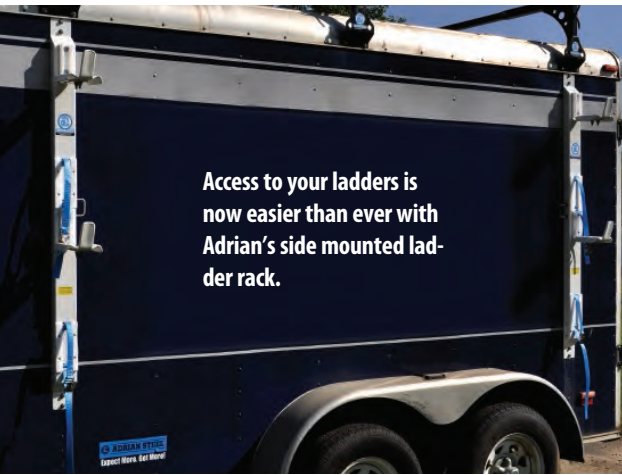
3969 GENERAL PACKAGE

ITEM	MODEL	DESCRIPTION	QTY.
1	CL1860	Cabinet Locker	1
2	DC12	Drawer Component 12" Wide	2
3	DC6	Drawer Component 6" Wide	4
4	LK8	Ladder Keeper 8" (not shown)	1
5	MD4842T	Desk Module 48x42x24	2
6	TRK52	Trailer Z-Rail Kit 52" LG	6
7	TRK60	Trailer Z-Rail Kit 60" LG	2
8	UH5T	Z-rail Acc. Hook (not shown)	10
9	1	Cabinet 18x22x18	3
10	1A	Shelf for #1 Cabinet	1
11	19	2-Drawer Medium	1
12	22	Linbin 30-250 Blue 15x16x7	6
13	23896-0	E-Track Strip 12" W/Cam Blk	2
14	24	Linbin 30-240 Blue 15x8x7	12
15	29193-0	Rest Asm. 2 Row 51"	2
16	29687-0	E-Track 128" or 10'8"	1
17	4A	Parts Tray 2x12x36	1
18	9	4-Drawer Shallow	1

Note: Interior designed for 16' long trailers.

DON'T THROW IT ON THE FLOOR! ADRIAN HAS ALL THE LADDER CARRYING SOLUTIONS YOU NEED!

Why risk damaging your ladders by allowing them to slide around inside your cargo trailer as you drive down the road? Adrian Steel has several options for safely transporting your ladders and other cargo.



SDL2T SIDE MOUNTED LADDER RACK

- Easily mounts to side of the cargo trailer
- Has the capability to carry two ladders
- Features powder coated steel vertical bows
- Adjustable plastisol ladder clamps protect the ladder while stowed
- A tough nylon strap secures the ladders during transportation
- U-Bolts provide an attachment location to add a locking cable for security.

Note: The length of ladder the SDL2T can accommodate is determined by the length of the trailer.



Plastisol ladder clamps protect fiberglass ladders



Containment straps secure ladder



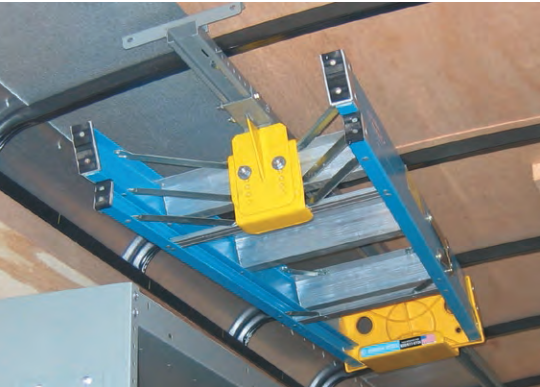
2BRST UTILITY RACKS Carry ladders and more with confidence, 2BRST utility racks give you the flexibility no matter what the job.

- Welded tie hooks
- Universally designed to fit 6' to 8' wide trailers
- Available in a durable black or white powder coat finish
- Upright caps protect ladders when loading and unloading
- Available in 1 and 2 bar sets.

Note: 2BRST utility racks with 1/2" or wider drip rails require TRDK Drip Rail Kit

PRODUCT	MODEL	DESCRIPTION
One Bar Steel	1BRST-W	Single Cross Beam Assembly/White
One Bar Steel	1BRST-B	Single Cross Beam Assembly/Black
Two Bar Steel	2BRST-W	Two Bar Assembly/White
Two Bar Steel	2BRST-B	Two Bar Assembly/Black
Drip Rail Kit	TRDK-B	Single Bar Kit/Black
Drip Rail Kit	TRDK-W	Single Bar Kit/White

LADDER KEEPER



1 Simply press ladder inward to release rear ladder rung from the rear clamp bracket.



2 Walk the ladder back as the front clamp bracket glides on the track.



3 Remove front rung from the front clamp bracket and you're ready to go to the job site!

Store ladders inside the trailer and off the floor with the LK8 Ladder Keeper. The Ladder Keeper features plastic coated clamps to protect the ladder rungs, a gas spring that compresses ladder rungs for secure transportation and an extruded track that simplifies loading and unloading the ladder. The Ladder Keeper will accommodate up to an eight-foot ladder. Longer trailers can accommodate longer ladders with the option LKX extension that provides 4' of additional track. The Ladder Keeper requires roof bows in the trailer for installation.

LK8 Ladder Keeper interior ladder rack
LKX Ladder Keeper 4 foot extension

ADRIAN STEEL COMPANY



QUALITY

- Our products are durable and reliable. Warranty claims are less than 1% of sales.
- Our warranty covers our products for three years or 36,000 miles.

INNOVATIVE PRODUCTS WITH FEATURES THAT MATTER

- Drawers that stay closed while in transit.
- Shelving and cabinets designed to fit together for custom work spaces.
- 60" high shelves maximize cargo trailer storage.
- Interior ladder storage.
- Plug and Play accessories.
- File storage, removable small parts bins, and much more!



COMMITMENT

At Adrian Steel, we are committed to you beyond the upfit!

- A dedicated Customer Care Team at corporate headquarters.
- A network of highly qualified distributors to support you locally.
- Our commitment to provide the best cargo management solutions in North America.

EXPERIENCE

- **Over One Million vehicles upfitted**, and counting! It's a fact that an organized vehicle increases work flow efficiencies and reduces inventory damages.
- Recognized as a National Truck Equipment Association MVP.



SERVICE

- Adrian Steel Products can be purchased throughout North America at authorized Adrian Steel distributors.
- Adrian Steel Customer Service Representatives are available M-F, 8am - 5pm EST at **1-800-677-2726**.
- E-mail us at info@adriansteel.com with questions, comments and feedback.
- Visit AdrianSteel.com for the most up-to-date product information, distributor locator, product catalogs, videos and more.

PROUDLY DISTRIBUTED BY:



906 James Street
Adrian, Michigan 49221-3996
517-265-6194 Fax: 517-265-5834
Toll Free **800-677-2726**
adriansteel.com info@adriansteel.com